



ELECTRICAL DESIGN GROUP

ELECTRICAL BUILDING SERVICES CONSULTANTS

P.O. Box 15, SHERWOOD Q. 4075

Phone: (07) 3278 4375

Website: www.edg.net.au Email: brisbane@edg.net.au

C2964a - BURNSIDE ROAD, GILBERTON

C2964a-0001(J).xls

ELECTRICAL SERVICES CONTRACT DOCUMENT SCHEDULE

REVISION J - 25 SEPTEMBER 2024

ISSUING INFORMATION				DATE OF ISSUE									
				DAY	13	18	20	17	17	24	16	27	25
				MONTH	10	10	12	04	04	04	05	05	09
				YEAR	23	23	23	24	24	24	24	24	24
REASON FOR ISSUE					P	T	T	C	C	C	C	C	C
A = APPROVAL				C = CONSTRUCTION		N = COORDINATION		P = PRELIMINARY		T = TENDER			

DISTRIBUTION				NUMBER OF COPIES									
WWW.EDG.NET.AU				1E	1E	1E	1E	1E	1E	1E	1E	1E	1E
ITTENSOHN CONSTRUCTIONS				1E	1E	1E	1E	1E	1E	1E	1E	1E	1E
P = PRINT				T = TRACING		D = DISC		E = EMAIL		F = FAX			

DOCUMENTS		REVISION											
C2964a-E01.dwg	LEGEND & NOTES	A	B		C			D	E				
C2964a-E02.dwg	SCHEMATICS & DETAILS	A	B		C								
C2964a-E03.dwg	SITE PLAN & ROOF PLAN	A	B	C	D	E	F			G		H	
C2964a-E04.dwg	GROUND LEVEL FLOOR PLAN & CEILING PLAN	A	B	C	D	E							
C2964a-E05.dwg	LEVEL 1 FLOOR PLAN & CEILING PLAN	A	B	C	D								
C2964a-0001.xls	CONTRACT DOCUMENT SCHEDULE	A	B	C	D	E	F	G	H				
C2964a-0002.xls	EQUIPMENT SCHEDULE	A		B	C								
C2964a-0004.xls	DISTRIBUTION BOARD DB-1 SCHEDULE	A	B		C	D							
C2964a-0005.xls	DISTRIBUTION BOARD DB-2 SCHEDULE	A	B		C	D							
C2964a-0001.zip	FITTING & OUTLET DATASHEETS		A										



ELECTRICAL DESIGN GROUP

ELECTRICAL BUILDING SERVICES CONSULTANTS

P.O. Box 15, SHERWOOD Q. 4075

Phone: (07) 3278 4375 Fax: (07) 3716 0222

Web Site: www.edg.net.au Email: brisbane@edg.net.au

C2964a - BURNSIDE ROAD, GILBERTON

C2964a-0002(C).xls

ELECTRICAL EQUIPMENT SCHEDULE

REVISION C - 17 APRIL 2024

THE LIGHT FITTING SUPPLIER CONTACT DETAILS MAY BE AVAILABLE ON THE EDG WEBSITE VIA THE FOLLOWING LINK
www.edg.net.au/Links/Lighting.htm

TYPE	LAMPS	DESCRIPTION	COLOUR / ACCESSORY	CATALOGUE No	REV
L1	150W 4000K LED	ROD SUSPENDED HIGH BAY C/W INTEGRAL DRIVER	BLACK	EQUAL TO GAMMA ILLUMINATION ORBIT 881483	A
L2	100W 4000K LED	ROD SUSPENDED IP 67 HIGH BAY C/W INTEGRAL DRIVER	BLACK	EQUAL TO GAMMA ILLUMINATION ORBIT 881538	A
L3	24W LED 4000K	600 LONG WALL MOUNTED IP65 DIFFUSED BATTEN C/W INTEGRAL ELECTRONIC CONTROL GEAR	LIGHT GREY	EQUAL TO GAMMA ILLUMINATION STORM 1510	A
L4	45W LED 4000K	1200 LONG IP65 DIFFUSED BATTEN C/W INTEGRAL ELECTRONIC CONTROL GEAR AND A NON MAINTAINED AS2293 EMERGENCY PACK SUSPENDED / SURFACE MOUNTED AS REQUIRED. THE L14 FITTINGS ARE NOT SWITCHED AND ARE TO ONLY OPERATE UPON POWER SUPPLY FAILURE IN ACCORDANCE WITH AS2293	NA	EQUAL TO GAMMA ILLUMINATION STORM 1311-4K	B
L5	24W LED 4000K	600 LONG WALL MOUNTED IP65 DIFFUSED BATTEN C/W INTEGRAL ELECTRONIC CONTROL GEAR AND PRESENCE DETECTION SENSOR	LIGHT GREY	EQUAL TO GAMMA ILLUMINATION STORM 1510-MS	A
L6	A SINGLE HORIZONTAL RUN OF LED STRIP LIGHT 4000K WHITE LEDS AT 12MM SPACING WITH REMOTE CONTROL GEAR. MOUNT THE LED STRIP UNDER THE OVERHEAD CUPBOARDS HARD AGAINST THE SPLASHBACK AS PER THE ARCHITECTURAL JOINERY DETAILS THE SUPPLIER IS TO CUT / JOIN THE LED STRIPS TO SUIT THE SITE DIMENSIONS. DO NOT CUT THE LED STRIPS ON SITE SCREW FIX THE ALUMINIUM SUPPORT IN PLACE.			NEON PRODUCTS AUSTRALIA LF-DFB-NW-300-12 + PR-LIN172153-F	A
L7	40W 4000K LED	1200 X 300 LAY IN FLAT PLATE LED FITTING C/W REMOTE DRIVER MOUNTED IN THE T-BAR	WHITE TRIM	GAMMA ILLUMINATION PHANTOM 884501	A
L8	34W 4000K LED	600 X 600 LAY IN FLAT PLATE LED FITTING C/W REMOTE DRIVER MOUNTED IN THE CEILING T BAR	WHITE TRIM	EQUAL TO GAMMA ILLUMINATION AXIS 1549-4K-34W	A
L9	8W 3000K LED	AMENITY RECESSED DOWNLIGHT C/W REMOTE DALI DRIVER	WHITE	EQUAL TO GAMMA ILLUMINATION MYLO 1004-WFL-3K-W	A
E1	LED	EMERGENCY LIGHT: RECESSED NON-MAINTAINED EMERGENCY LIGHT. AS2293 CLASSIFICATION C0-D40 - C90-D40.	WHITE	CLEVERTRONICS LCFLED	A



ELECTRICAL DESIGN GROUP

ELECTRICAL BUILDING SERVICES CONSULTANTS

P.O. Box 15, SHERWOOD Q. 4075

Phone: (07) 3278 4375 Fax: (07) 3716 0222

Web Site: www.edg.net.au Email: brisbane@edg.net.au

C2964a - BURNSIDE ROAD, GILBERTON

C2964a-0002(C).xls

ELECTRICAL EQUIPMENT SCHEDULE

REVISION C - 17 APRIL 2024

THE LIGHT FITTING SUPPLIER CONTACT DETAILS MAY BE AVAILABLE ON THE EDG WEBSITE VIA THE FOLLOWING LINK
www.edg.net.au/Links/Lighting.htm

TYPE	LAMPS	DESCRIPTION	COLOUR / ACCESSORY	CATALOGUE No	REV
E2	LED	JUMBO EXIT LIGHT: MAINTAINED 40M VIEWING DISTANCE EXIT LIGHT C/W DIFFUSERS & DIRECTIONAL ARROWS AS SHOWN. CEILING SURFACE MOUNT OR WALL MOUNT BETWEEN 2100mm & 2700mm AFFL IF THERE IS NO VERTICAL SURFACE TO MOUNT THE FITTING ON WITHIN THIS RANGE CONFIRM THE MOUNTING HEIGHT WITH THE ENGINEER. PROVIDE A CUSTOM WHITE COUNTER LEAVER MOUNTING BRACKET AS REQUIRED AS2293 CLASSIFICATION C0-D6.3 - C90-E3.2.	WHITE	CLEVERTRONICS CJELED-40	A
EX	LED	EXIT LIGHT: MAINTAINED 24M VIEWING DISTANCE EXIT LIGHT C/W DIFFUSERS & DIRECTIONAL ARROWS AS SHOWN. CEILING SURFACE MOUNT OR WALL MOUNT BETWEEN 2100mm & 2700mm AFFL IF THERE IS NO VERTICAL SURFACE TO MOUNT THE FITTING ON WITHIN THIS RANGE CONFIRM THE MOUNTING HEIGHT WITH THE ENGINEER. PROVIDE A CUSTOM WHITE COUNTER LEAVER MOUNTING BRACKET AS REQUIRED AS2293 CLASSIFICATION C0-D8 - C90-E3.2.	WHITE	CLEVERTRONICS LUBPRO-SM	A
EMERGENCY PACK		LIGHT FITTINGS THAT ARE DESIGNATED AS BEING PROVIDED WITH AN EMERGENCY PACK ARE TO BE PROVIDED WITH AN INTEGRAL AS2293 EMERGENCY PACK. THE FITTINGS ARE TO BE NON MAINTAINED WITH ALL LAMPS SWITCHED AS PER THE LIGHTING CONTROL FOR THAT SPACE UNLESS NOTED OTHERWISE. REFER TO THE SPECIFICATION FOR FURTHER DETAILS OF THE CONFIGURATION AND SWITCHING OF EMERGENCY LIGHTS.			A
LIGHTING CONTROL SWITCH PANEL (SP1 AND SP2)		MULTI GANG LIGHT SWITCH PANEL ONE SWITCH PER CIRCUIT MOUNTED AT 1000mm AFFL UNLESS NOTED OTHERWISE.	WHITE	CLIPSAL C2000	A
PROXIMITY DETECTOR SWITCH (PD)		ADJUSTABLE FLUSH RECESSED 360 DEGREE PIR PRESENCE DETECTOR TO OPERATE THE ASSOCIATED LIGHTS FOR A PRE-SET AMOUNT OF TIME. ADJUST THE TIME AND SENSITIVITY ON SITE AS DIRECTED BY THE ENGINEER. SUBMIT DETAILS OF THE MOVEMENT DETECTOR SWITCH FOR APPROVAL PRIOR TO ORDERING	WHITE	CLIPSAL C2000	A
ONE-WAY LIGHT SWITCH		ONE-WAY LIGHT SWITCH C/W CIRCUIT IDENTIFICATION ON THE FACEPLATE BEHIND THE SURROUND MOUNTED AT 1000mm AFFL UNLESS NOTED OTHERWISE.	WHITE	CLIPSAL C2000	A
TWO-WAY LIGHT SWITCH		TWO-WAY LIGHT SWITCH C/W CIRCUIT IDENTIFICATION ON THE FACEPLATE BEHIND THE SURROUND MOUNTED AT 1000mm AFFL UNLESS NOTED OTHERWISE.	WHITE	CLIPSAL C2000	A
SINGLE POWER OUTLET		SINGLE POWER OUTLET C/W CIRCUIT IDENTIFICATION ON THE FACEPLATE BEHIND THE SURROUND MOUNT AT 300mm AFFL U.N.O. RATING 10A U.N.O.	WHITE	CLIPSAL C2000	A



ELECTRICAL DESIGN GROUP

ELECTRICAL BUILDING SERVICES CONSULTANTS

P.O. Box 15, SHERWOOD Q. 4075

Phone: (07) 3278 4375 Fax: (07) 3716 0222

Web Site: www.edg.net.au Email: brisbane@edg.net.au

C2964a - BURNSIDE ROAD, GILBERTON

C2964a-0002(C).xls

ELECTRICAL EQUIPMENT SCHEDULE

REVISION C - 17 APRIL 2024

THE LIGHT FITTING SUPPLIER CONTACT DETAILS MAY BE AVAILABLE ON THE EDG WEBSITE VIA THE FOLLOWING LINK
www.edg.net.au/Links/Lighting.htm

TYPE	LAMPS	DESCRIPTION	COLOUR / ACCESSORY	CATALOGUE No	REV
DOUBLE POWER OUTLET		DOUBLE POWER OUTLET C/W CIRCUIT IDENTIFICATION ON THE FACEPLATE BEHIND THE SURROUND MOUNT AT 300mm AFFL U.N.O. RATING 10A U.N.O.	WHITE	CLIPSAL C2000	A
DOUBLE POWER OUTLET (USB)		DOUBLE POWER OUTLET C/W USB A AND USB C CHARGER , CIRCUIT IDENTIFICATION ON THE FACEPLATE BEHIND THE SURROUND MOUNT AT 300mm AFFL U.N.O. RATING 10A U.N.O.	WHITE	CLIPSAL C2000	A
WEATHERPROOF POWER OUTLET (WP)		IP54 WEATHERPROOF SINGLE / DOUBLE POWER OUTLET AS NOTED ON DRAWING C/W COVER FLAP OVER SOCKET. MOUNT AT MINIMUM 1100mm AFFL U.N.O. RATING 10A U.N.O.	-	CLIPSAL WSCF227F	A
SPECIAL PURPOSE OUTLET		SPECIAL PURPOSE OUTLET TYPE AS NOTED. MOUNT AT 1350mm AFFL U.N.O. RATING 20A U.N.O. CONNECT TO EQUIPMENT VIA FLEXIBLE CONDUIT.			A
SINGLE-PHASE ISOLATOR		SINGLE-PHASE WEATHERPROOF ISOLATOR. MOUNT AT 1350mm AFFL U.N.O. RATING 20A U.N.O. CONNECT TO EQUIPMENT VIA FLEXIBLE CONDUIT.	-	CLIPSAL WHT20	A
THREE-PHASE ISOLATOR		THREE-PHASE WEATHERPROOF ISOLATOR. MOUNT AT 1350mm AFFL U.N.O. RATING 20A U.N.O. CONNECT TO EQUIPMENT VIA FLEXIBLE CONDUIT.	-	CLIPSAL WHT35	A
CAT 6 COMMUNICATIONS OUTLET		RJ45 CAT-6 COMMUNICATIONS OUTLET, CABLED BACK TO THE COMMUNICATIONS RACK CR-A TERMINATED ONTO FACILITY PATCH PANELS VIA 4-PAIR CAT-6 UTP CABLE. MOUNT UP TO 3 RJ45 OUTLETS PER MULTI-GANG FACEPLATE WITH SEPARATE PERMANENT LABELLING FOR EACH OUTLET.	WHITE	CLIPSAL C2000	A
PCD		NBN PREMISES CONNECTION DEVICE IN ACCORDANCE WITH THE NBN REQUIREMENTS. PROVIDE A CONCEALED P23 NBN COMPLIANT DROP CONDUIT FROM THE PCD TO THE ACCESSIBLE CEILING SPACE WITHIN EACH TENANCY AS WELL AS A P23 NBN COMPLIANT DROP CONDUIT FROM THE PCD TO CR-A.			A
COMMUNICATIONS RACK CR-A		PROVIDE CR-A AS A 600 DEEP WALL MOUNTED HINGED 19 INCH 18RU COMMUNICATIONS RACK REPLACING THE EXISTING RACK. PROVIDE THE RACK WITH A FIBER OPTIC AND PATCH PANELS TO TERMINATE THE OPTICAL FIBRE CABLE AND ALL OF THE EXISTING AND FACILITY COMMUNICATIONS OUTLET CABLES. PROVIDE DETAILS OF THE RACK FOR APPROVAL PRIOR TO ORDERING .			A
PV INVERTER 1 & PV INVERTER 2		WALL MOUNTED PV INVERTERS PROVIDED AS PART OF THE TENANCY FIT OUT			A
DB-1		WALL MOUNTED DISTRIBUTION BOARD DB-1 REFER TO THE NOTES AND THE DISTRIBUTION BOARD DB-1 SCHEDULE FOR ADDITIONAL INFORMATION AND REQUIREMENTS. PROVIDE A SHOP DRAWING OF THE DB FOR APPROVAL.			A



ELECTRICAL DESIGN GROUP

ELECTRICAL BUILDING SERVICES CONSULTANTS

P.O. Box 15, SHERWOOD Q. 4075

Phone: (07) 3278 4375 Fax: (07) 3716 0222

Web Site: www.edg.net.au Email: brisbane@edg.net.au

C2964a - BURNSIDE ROAD, GILBERTON

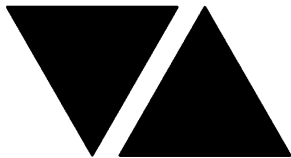
C2964a-0002(C).xls

ELECTRICAL EQUIPMENT SCHEDULE

REVISION C - 17 APRIL 2024

THE LIGHT FITTING SUPPLIER CONTACT DETAILS MAY BE AVAILABLE ON THE EDG WEBSITE VIA THE FOLLOWING LINK
www.edg.net.au/Links/Lighting.htm

TYPE	LAMPS	DESCRIPTION	COLOUR / ACCESSORY	CATALOGUE No	REV
DB-2		WALL MOUNTED DISTRIBUTION BOARD DB-2 REFER TO THE NOTES AND THE DISTRIBUTION BOARD DB-2 SCHEDULE FOR ADDITIONAL INFORMATION AND REQUIREMENTS. PROVIDE A SHOP DRAWING OF THE DB FOR APPROVAL.			A
MSB		SURFACE MOUNTED MAIN SWITCHBOARD INCORPORATING THE METERING REFER TO THE NOTES AND SCHEMATIC FOR ADDITIONAL REQUIREMENTS PROVIDE A SHOP DRAWING OF THE MSB FOR APPROVAL.			A
METER		QCEM COMPLIANT DIRECT WIRED METER			A
CABLE ACCESS TYPE CA		1 x 100 DIA UNDERGROUND CONSUMERS MAIN CONDUIT FROM THE ENERGEX LEV PILLAR TO THE MSB AND 3 x 100 DIA UNDERGROUND CONSUMERS MAIN CONDUITS FROM THE MSB TO THE BOUNDARY ADJACENT THE LV PILLAR FOR FUTURE USE.			B
CABLE ACCESS TYPE CB		P50 UNDERGROUND NBN COMPLIANT LEAD IN CONDUIT FROM THE FOOTPATH PIT TO THE PCD			A
CABLE ACCESS TYPE CC		50 DIA UNDERGROUND CONDUIT FROM THE MSB TO A FLUSH 100 X 100 X 100 GALVANIZED JUNCTION BOX TO FACILITATE FUTURE CARPARK LIGHTING. PROVIDE THE CONDUIT WITH A SPARE DRAW WIRE.			A
CABLE ACCESS TYPE CD		50 DIA UNDERGROUND CONDUIT INTERCONNECTION FLUSH 100 X 100 X 100 GALVANIZED JUNCTION BOXES TO FACILITATE FUTURE CARPARK LIGHTING. PROVIDE THE CONDUIT WITH A SPARE DRAW WIRE.			A
CABLE ACCESS TYPE CE		50 DIA UNDERGROUND CONDUIT UNDER THE DRIVEWAY CAPPED 600 PAST THE HARDSTAND			A
CABLE ACCESS TYPE CF		50 DIA UNDERGROUND CONDUIT FROM THE DISTRIBUTION BOARD TO A FLUSH 100 X 100 X 100 GALVANIZED JUNCTION BOX TO FACILITATE FUTURE EV CHARGER. PROVIDE THE CONDUIT WITH A SPARE DRAW WIRE.			C



ELECTRICAL DESIGN GROUP

ELECTRICAL BUILDING SERVICES CONSULTANTS

P.O. Box 15, SHERWOOD Q. 4075

Phone: (07) 3278 4375 Fax: (07) 3716 0222

Web Site: www.edg.net.au Email: brisbane@edg.net.au

C2964a - BURNSIDE ROAD, GILBERTON

C2964a-0004(D).xls

DISTRIBUTION BOARD DB-1

REVISION D - 17 APRIL 2024

							REV
FAULT CURRENT:		6KA		MAIN SWITCH:		250A NON AUTO LOAD BREAK MSB 4C25	A
CHASSIS SIZE:		60 POLE		SUPPLIED FROM:			A
CHASSIS RATING:		250A		SUPPLY CABLE:			A
PHASES:		3					A
PROVIDE THE DB WITH A FULL WIDTH EMPTY DIN RAIL TO ACCOMMODATE FUTURE CONTACTORS AND CONTROLS IN ADDITION TO THE CONTROLS INCLUDING THE EQUIPMENT PROVIDED AS PART OF THE INITIAL WORKS. PROVIDE THE DB WITH AN AS2293 EMERGENCY LIGHTING CONTROL SYSTEM TO CONTROL THE ASSOCIATED EMERGENCY LIGHTS. PROVIDE THE DB WITH SURGE PROTECTION.							A
CIRC	PH	CIRCUIT BREAKER (amps)	CONTROL EQUIPMENT	CABLE SIZE (mm ²)	LOCATION	CIRCUIT USE	
P1	3	63		2.5	WAREHOUSE	PV INVERTER	A
P2	3	20	RCBO	2.5	WAREHOUSE	ROLLER SHUT DOOR	A
P3	3	20	RCBO	2.5	WAREHOUSE	SLIDING DOOR	A
P4	3	20	RCBO	2.5	WAREHOUSE	RSD	A
P5	3	25	RCBO	4.0	ROOF	AC	D
P6	1	20	RCBO TC ON 6.00 AM OFF 10.00 PM	2.5	ROOF	EXHAUST	A
P7	1	20	RCBO	2.5	AMENITY	GPOs	A
P8	1	20	RCBO	2.5	OFFICE	GPOs	A
P9							C
P10	3	20	RCBO	2.5	KITCHEN	HWS	C
P11	1	20	RCBO	2.5	OFFICE	AC	D
L1	1	20	RCBO PE ON DUSK OFF DAWN	2.5	EXTERNAL	LIGHTS	A
L2	1	20	RCBO PE ON DUSK TC OFF 10.00PM	2.5	EXTERNAL	LIGHTS	A
L3	1	20	RCBO	2.5	WAREHOUSE	LIGHTS	A
L4	1	20	RCBO	2.5	WAREHOUSE	LIGHTS	A
L5	1	20	RCBO	2.5	WAREHOUSE	LIGHTS	A
L6	1	20	RCBO	2.5	OFFICE	LIGHTS	A
L7	1	20	RCBO	2.5	OFFICE	LIGHTS	A
							A



ELECTRICAL DESIGN GROUP

ELECTRICAL BUILDING SERVICES CONSULTANTS

P.O. Box 15, SHERWOOD Q. 4075

Phone: (07) 3278 4375

Website: www.edg.net.au Email: brisbane@edg.net.au

C2964a - BURNSIDE ROAD, GILBERTON










C2964a-0005(D).xls

DISTRIBUTION BOARD DB-2

REVISION D - 17 APRIL 2024

FAULT CURRENT: 6KA							REV
MAIN SWITCH: 250A NON AUTO LOAD BREAK							A
CHASSIS SIZE: 60 POLE							A
SUPPLIED FROM: MSB							A
CHASSIS RATING: 250A							A
SUPPLY CABLE: 4C25							A
PHASES: 3							A
PROVIDE THE DB WITH A FULL WIDTH EMPTY DIN RAIL TO ACCOMMODATE FUTURE CONTACTORS AND CONTROLS IN ADDITION TO THE CONTROLS INCLUDING THE EQUIPMENT PROVIDED AS PART OF THE INITIAL WORKS. PROVIDE THE DB WITH AN AS2293 EMERGENCY LIGHTING CONTROL SYSTEM TO CONTROL THE ASSOCIATED EMERGENCY LIGHTS. PROVIDE THE DB WITH SURGE PROTECTION.							A
CIRC	PH	CIRCUIT BREAKER (amps)	CONTROL EQUIPMENT	CABLE SIZE (mm ²)	LOCATION	CIRCUIT USE	
P1	3	63		2.5	WAREHOUSE	PV INVERTER	A
P2	3	20	RCBO	2.5	WAREHOUSE	ROLLER SHUT DOOR	A
P3	3	20	RCBO	2.5	WAREHOUSE	SLIDING DOOR	A
P4	3	20	RCBO	2.5	WAREHOUSE	ROLLER SHUT DOOR	A
P5	3	25	RCBO	4.0	ROOF	AC	D
P6	1	20	RCBO TC ON 6.00 AM OFF 10.00 PM	2.5	ROOF	EXHAUST	A
P7	1	20	RCBO	2.5	AMENITY	GPOs	A
P8	1	20	RCBO	2.5	OFFICE	GPOs	A
P9	1	20	RCBO	2.5	RECEPTION	GPOs	A
P10	1	20	RCBO	2.5		CR-A	A
P11	1	40	RCBO	6.0	KITCHEN	AUTOBOILER	A
P12	3	20	RCBO	2.5	KITCHEN	HWS	C
P13	1	20	RCBO	2.5	KITCHEN	GPOs	A
P14							C
P15	1	20	RCBO	2.5	OFFICE	AC	D
L1	1	20	RCBO PE ON DUSK OFF DAWN	2.5	EXTERNAL	LIGHTS	A
L2	1	20	RCBO PE ON DUSK TC OFF 10.00PM	2.5	EXTERNAL	LIGHTS	A
L3	1	20	RCBO	2.5	WAREHOUSE	LIGHTS	A
L4	1	20	RCBO	2.5	WAREHOUSE	LIGHTS	A
L5	1	20	RCBO	2.5	WAREHOUSE	LIGHTS	A
L6	1	20	RCBO	2.5	OFFICE	LIGHTS	A
L7	1	20	RCBO	2.5	OFFICE	LIGHTS	A
L8	1	20	RCBO PE ON DUSK OFF DAWN	2.5	ROOF	SIGN	C

LEGEND

L1 	L1: 150W HIGH BAY.
L2 	L2: 100W HIGH BAY.
	L3: 600 LONG IP65 BATTEN.
	L4: 1200 LONG IP65 BATTEN C/W NON MAINTAINED EMERGENCY PACK.
	L5: 600 LONG WALL MOUNTED IP65 BATTEN C/W INTEGRAL SENSOR.
	L6: OVERHEAD CUPBOARD LED STRIP LIGHT.
	L7: 300 x 1200 FLAT PLATE TBAR TROFFER.
	L8: 600 x 600 FLAT PLATE TBAR TROFFER.
L9 	L9: RECESSED DOWNLIGHT.

NOTE

NOTES

- THE ELECTRICAL SERVICES SUB-CONTRACT INCLUDES BUT IS NOT LIMITED TO THE FOLLOWING:
- SUPPLY AND INSTALLATION OF ALL COMPONENTS FORMING PART OF THE ELECTRICAL SERVICES.
 - CO-ORDINATION.
 - INSPECTIONS.
 - TESTING AND COMMISSIONING.
 - MAINTENANCE.
 - CABLING, CABLE SUPPORT SYSTEMS AND ACCESS.
 - POWER DISTRIBUTION.
 - LIGHTING.
 - COMMUNICATIONS CABLING.
 - ALL MINOR COMPONENTS AND INCIDENTAL WORKS NOT SPECIFICALLY REFERRED TO, HOWEVER NECESSARY TO COMPLETE THE ELECTRICAL SERVICES INSTALLATION SUCH THAT IT IS HANDED OVER COMPLETE, OPERATIONAL AND FIT FOR THE INTENDED USE.

ACCEPT FULL RESPONSIBILITY FOR LIAISING, ARRANGING AND CO-ORDINATION ALL WORKS THAT HAVE AN EFFECT ON OR WILL BE AFFECTED BY THE ELECTRICAL SERVICES.

- ENSURE THAT THE WORK IS PERFORMED BY THE HOLDER OF A CURRENT ELECTRICAL SUB CONTRACTOR LICENSE. ENSURE THE INSTALLATION AND ALL COMPONENTS, FIXTURES, FITTINGS, OUTLETS AND CABLES ARE SUPPLIED AND INSTALLED TO A HIGH STANDARD THROUGHOUT, AND INSTALLED IN A NEAT AND TRADESMAN LIKE MANNER, TO THE CURRENT INDUSTRY STANDARDS. ENSURE ALL MATERIALS AND COMPONENTS OF A SIMILAR TYPE ARE OF THE SAME MANUFACTURER AND INSTALLED IN A UNIFORM MANNER.

CONCEAL ALL WIRING AND CONDUITS UNLESS APPROVED BY THE ARCHITECT. ENSURE ALL COMPONENTS, EQUIPMENT AND MATERIALS SUPPLIED ARE NEW, UNUSED, DESIGNED AND SELECTED TO ENSURE SATISFACTORY OPERATION UNDER VARYING ATMOSPHERIC, CLIMATIC HUMID TROPICAL CONDITIONS WITHOUT DISTORTION AND DETERIORATION IN ANY PART AFFECTING EFFICIENCY AND RELIABILITY OF THE SYSTEMS. DESIGN AND SELECT ALL EQUIPMENT TO PROVIDE THE NECESSARY SAFETY TO HUMAN LIFE AND PROPERTY DURING OPERATION AND MAINTENANCE WITH PARTICULAR ATTENTION GIVEN TO ELECTRICAL SAFETY AND SEGREGATION PRECAUTIONS.

ALL WORKS ARE TO BE CARRIED OUT IN ACCORDANCE WITH THE BUILDER'S PROGRAM. ENSURE ALL FINAL LOCATIONS OF OUTLETS AND FITTINGS ARE CO-ORDINATED ONSITE WITH THE ARCHITECT AND ALL OTHER SERVICES, TO THE APPROVAL OF THE PROJECT MANAGER. ALLOW TO CO-ORDINATE THE FINAL LOCATION OF ALL EQUIPMENT, FITTINGS, & OUTLETS, SUCH THAT THEY ARE INSTALLED IN ACCORDANCE WITH THE AS3000 RESTRICTED ZONES, AND ARE NOT COVERED INAPPROPRIATELY.

PROVIDE ALL MATERIALS AS NEW, AND OF THE HIGHEST CLASS AVAILABLE FOR THEIR RESPECTIVE TYPES. ENSURE ALL ASPECTS OF THE WORK ARE OF A HIGH STANDARD THROUGHOUT, AND INSTALLED IN A NEAT AND TRADESMAN LIKE MANNER, TO THE CURRENT INDUSTRY STANDARDS.

- RESPECTIVE OF INFORMATION CONTAINED IN THE ELECTRICAL SERVICES DOCUMENTS OR IN INSTRUCTIONS, IT IS THE ELECTRICAL SUB CONTRACTORS RESPONSIBILITY TO ENSURE ALL ELECTRICAL SERVICES WORKS ARE INSTALLED IN ACCORDANCE WITH THE REQUIREMENTS OF THE FOLLOWING. REFER ANY DISCREPANCIES BETWEEN THE REQUIREMENTS OF THE FOLLOWING AND/OR THE ELECTRICAL SERVICES DOCUMENTS AND INSTRUCTIONS TO THE ARCHITECT FOR CLARIFICATION PRIOR TO THE PLACING OF ORDERS, FABRICATION OR INSTALLATION OF THE ITEMS/METHODS IN DISCREPANCY.
- NCC BUILDING CODE OF AUSTRALIA.
 - ELECTRICITY ACT.
 - ELECTRICAL SAFETY ACT.
 - AS3000.
 - AS3008.
 - WORKPLACE HEALTH AND SAFETY ACT.
 - TELECOMMUNICATIONS ACT.
 - ACMA REQUIREMENTS.

- ENSURE ALL OF THE ELECTRICAL SERVICES COMPLY WITH THE REQUIREMENTS OF ALL REGULATORY AUTHORITIES HAVING JURISDICTION OVER THE SITE INCLUDING BUT NOT LIMITED TO THE FOLLOWING:
- ACMA.
 - LOCAL COUNCIL.
 - LOCAL SUPPLY AUTHORITY.
 - STATE GOVERNMENT DEPARTMENT OF ENVIRONMENT AND HERITAGE.
 - QLD GOVERNMENT, DIVISION OF WORKPLACE, HEALTH AND SAFETY.
 - QLD FIRE AND RESCUE AUTHORITY.

- UNLESS OTHERWISE SPECIFIED, INSTALL AND TERMINATE CABLES IN ACCORDANCE WITH THE MANUFACTURERS' RECOMMENDATIONS. DETERMINE THE FINAL ROUTES TO SUIT THE BUILDING STRUCTURE AND SITE CONDITIONS. UNLESS NOTED OTHERWISE, PROVIDE ALL 240 VOLT POWER AND LIGHTING WIRING AS 2.5mm² TWIN & EARTH STRANDED COPPER CONDUCTORS, PVC INSULATED 0.6/1kV V75 GRADE TO AS53174, PROTECTED BY A 20 AMP CIRCUIT BREAKER. ALL CONDUIT AND FITTINGS TO BE RIGID UPVC TO AS2053, UNLESS NOTED OTHERWISE.

6. POWER DISTRIBUTION

THE POWER DISTRIBUTION COMPONENT OF THIS CONTRACT INCLUDES THE CONNECTION OF A NEW UNDERGROUND ENERGEX SERVICE TO NEW CONSUMERS MAINS AND A NEW MSB. ARRANGE WITH ENERGEX TO HAVE THE NEW CONSUMERS MAINS CONNECTED. THE NEW MSB IS TO CONTAIN ENERGEX METERING FOR THE COMMON AREA AND EACH OF THE TWO TENANCIES. THE MSB IS TO ALSO CONTAIN A COMMON AREA DISTRIBUTION BOARD DB-M AND SWITCHGEAR TO SUPPLY THE TWO TENANCY DISTRIBUTION BOARD DB-1 AND DB-2. ALL OF THE CIRCUITS AND OUTLETS NECESSARY TO COMPLETE THE INSTALLATION ARE TO BE PROVIDED AS REQUIRED. THE POWER DISTRIBUTION COMPONENT OF THIS CONTRACT INCLUDES, BUT IS NOT LIMITED TO THE FOLLOWING EXTENT OF WORK:

- POWER DISTRIBUTION.
- EARTHING.
- REMOVAL OF EXISTING REDUNDANT INSTALLATION.
- CIRCUITS.
- ISOLATORS AND OUTLETS.
- TESTING AND COMMISSIONING.

- ALL OF THE LIGHT FITTINGS, LAMPS AND ACCESSORIES ARE TO BE PROVIDED AS PART OF THIS CONTRACT. THE LIGHTING COMPONENT OF THIS CONTRACT INCLUDES, BUT IS NOT LIMITED TO THE FOLLOWING EXTENT OF WORK:

- LIGHTING.
- LIGHT FITTINGS AND ACCESSORIES.
- LAMPS.
- EARTHING OF THE LIGHTING INSTALLATION.
- LIGHTING CONTROL.
- LIGHTING SUBCIRCUITS.
- TESTING AND COMMISSIONING.

PROVIDE EACH EMERGENCY AND EXIT LIGHTING FACILITY AS A SINGLE POINT EMERGENCY LIGHTING SYSTEM THAT COMPLIES WITH THE LATEST ISSUE OF ALL PARTS AS2293 AND THE RELEVANT PARTS OF THE NCC BCA. INSTALL EMERGENCY LIGHT FITTINGS NOMINATED AS MAINTAINED WITH THE LAMP PERMANENTLY ON SUPPLIED VIA AN UNSWITCHED ACTIVE MAINS SUPPLY WHEN THE MAINS SUPPLY IS AVAILABLE. WHEN THE MAINS SUPPLY IS NOT AVAILABLE, THE LAMP IS TO REMAIN ON SUPPLIED BY THE EMERGENCY PACK. SINGLE LAMP MAINTAINED EMERGENCY LIGHTS ARE NOT SWITCHED WITH THE LOCAL GENERAL AREA LIGHTING. (THE LAMP IS ALWAYS ON.)

INSTALL EMERGENCY LIGHT FITTINGS NOMINATED AS NON-MAINTAINED AS FOLLOWS:

- IF THE FITTING IS NOT BEING SWITCHED, THE LAMP IS TO REMAIN OFF WHEN THE MAINS SUPPLY IS AVAILABLE. WHEN THE MAINS SUPPLY IS NOT AVAILABLE THE LAMP IS TO BE SWITCHED ON SUPPLIED BY THE EMERGENCY PACK. UNSWITCHED SINGLE LAMP NON-MAINTAINED EMERGENCY LIGHTS ARE NOT SWITCHED WITH THE LOCAL GENERAL AREA LIGHTING. (THE LAMP IS ON ONLY WHEN THE MAINS SUPPLY IS NOT AVAILABLE.)
- IF THE FITTING IS BEING SWITCHED, THE LAMP IS TO BE SUPPLIED AND CONTROLLED WITH THE LOCAL GENERAL AREA LIGHTING WHEN THE MAINS SUPPLY IS AVAILABLE. WHEN THE MAINS SUPPLY IS NOT AVAILABLE THE LAMP IS TO BE SWITCHED ON, SUPPLIED BY THE EMERGENCY PACK. (THE LAMP IS ON WHEN TURNED ON WITH THE LOCAL GENERAL LIGHTING OR THE MAIN SUPPLY IS NOT AVAILABLE.)

INSTALL EMERGENCY LIGHTS SUCH THAT THE STATUS INDICATOR L.E.D. IS CLEARLY VISIBLE AND THE TEST BUTTONS ARE READILY ACCESSIBLE. LABEL EACH CIRCUIT BREAKER WHICH CONTROLS THE UNSWITCHED ACTIVE TO EXIT LIGHTS WITH A LABEL FIXED ADJACENT; ENGRAVED PLASTIC LAMINATE, GREEN BACKGROUND WITH WHITE CHARACTERS: -

WARNING
INTERRUPTING SUPPLY WILL DISCHARGE
EMERGENCY LIGHTING BATTERIES

PROVIDE WRITTEN EVIDENCE OF THE INITIAL COMMISSIONING AND TESTING AND TESTING FOR THE DURATION OF THE MAINTENANCE PERIOD IN ACCORDANCE WITH AS 2293.2.

THIS EVIDENCE IS TO BE IN THE FORM OF A LOG BOOK SIMILAR TO THE GENERAL LIGHTING SERVICE PTY LTD "EMERGENCY LIGHTING MAINTENANCE LOG BOOK AND MANUAL" WHICH IS TO BE PROVIDED BY THE ELECTRICAL SUB-CONTRACTOR AND HAVE ALL ENTRIES FULLY COMPLETED AND BE PRESENTED FOR INSPECTION AT PRACTICAL COMPLETION. THE LOG BOOK IS TO BE RETAINED BY THE ELECTRICAL SUB-CONTRACTOR FOR THE DURATION OF THE MAINTENANCE PERIOD, AND THE SIX MONTHLY TEST AND MAINTENANCE RESULTS ENTERED. THE LOG BOOK IS TO BE PRESENTED FOR APPROVAL AT FINAL COMPLETION (EXPIRY OF THE MAINTENANCE PERIOD) AND WILL BE FORWARDED TO THE OPERATOR FOR THEIR USE.

PROVIDE MAINTENANCE OF THE EMERGENCY AND EXIT LIGHTING INSTALLATION INCLUDING RECORDS IN ACCORDANCE WITH THE LATEST ISSUE OF ALL PARTS AS2293 AND THE RELEVANT PARTS OF THE NCC BCA. PROVIDE THE EMERGENCY LIGHTING SYSTEM WITH A SUPPLY SENSING AND TESTING FACILITY IN ACCORDANCE WITH AS 2293. 1.

- THE COMMUNICATIONS CABLING COMPONENT OF THIS CONTRACT INCLUDES A NEW UNDERGROUND NBN LEAD-IN SERVICE TO A NBN PCD AND DROP CONDUITS TO THE CEILING SPACE WITHIN EACH TENANCY AND AN NBN NTD ADJACENT CR-A. ARRANGE WITH THE NBN CO TO INSTALL THE LEAD-IN SERVICE.

PROVIDE A COMMUNICATIONS RACK C/W ALL NECESSARY PATCH PANELS TO SUPPORT THE CAT 6 OUTLETS.


THE EXCHANGE SERVICES AND ACTIVE EQUIPMENT WILL BE PROVIDED BY THE OPERATOR. THE COMMUNICATIONS CABLING COMPONENT OF THIS CONTRACT INCLUDES, BUT IS NOT LIMITED TO THE FOLLOWING EXTENT OF WORK:

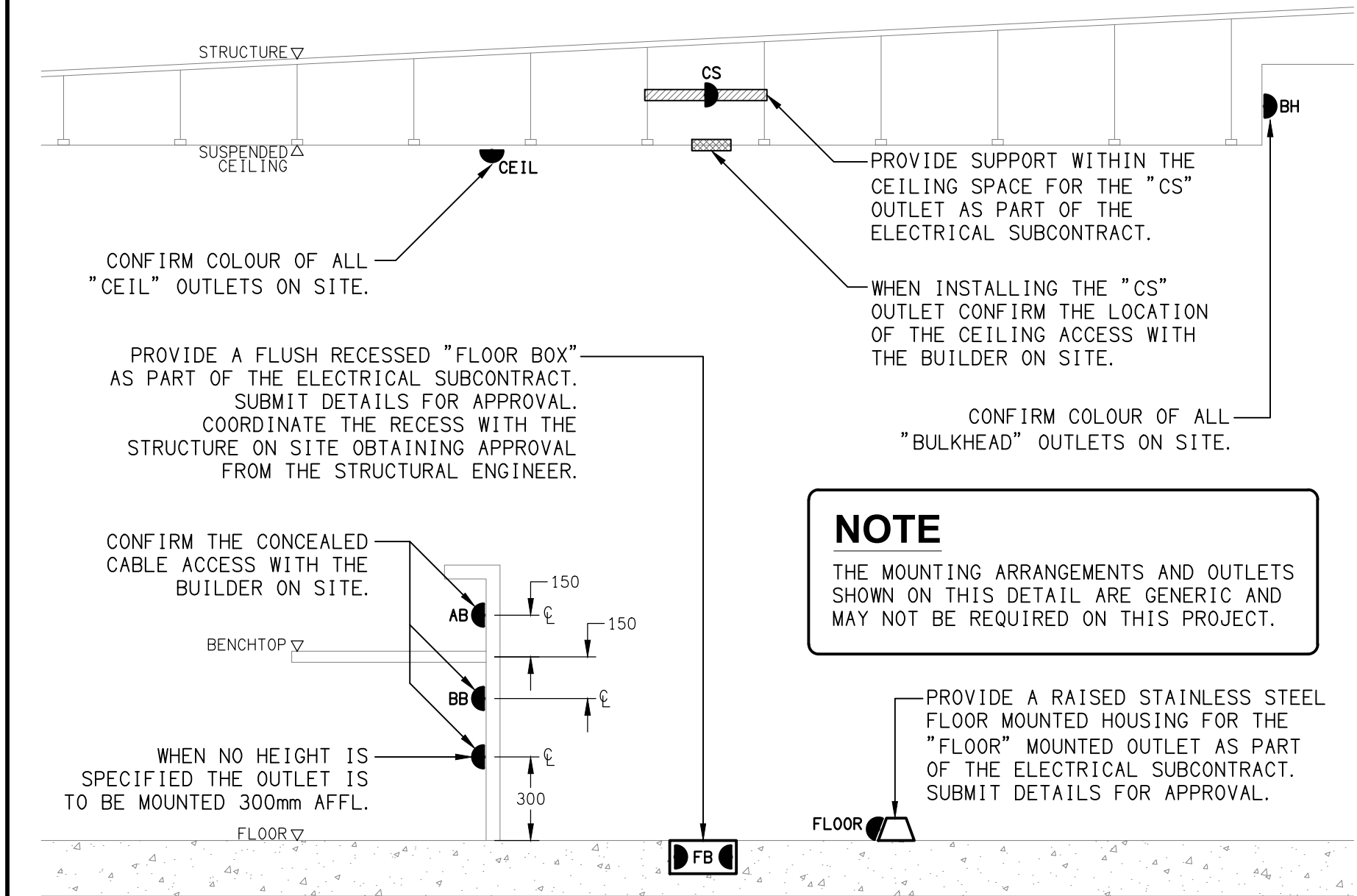
- NBN LEAD-IN SERVICE.
- NBN PCD.
- NBN DROP CONDUITS TO EACH TENANCY.
- NBN NTD.
- COMMUNICATIONS RACK C/W PATCH PANELS.
- CAT 6 OUTLETS.

- A - AMP CURRENT RATING
- AB - MOUNT ABOVE BENCH.
- AFFL - ABOVE FINISHED FLOOR LEVEL.
- BB - MOUNT BELOW BENCH.
- BH - MOUNT ON BULKHEAD.
- CEIL - MOUNT ON CEILING.
- CS - MOUNT WITHIN CEILING SPACE.
- C/W - COMPLETE WITH.
- DW - DISHWASHER.
- MCB - MINUTARY CIRCUIT BREAKER.
- MSB - MAIN SWITCHBOARD.
- MSBS - MECHANICAL SERVICES SWITCHBOARD.
- MW - MICROWAVE.
- N - NEON / LED INDICATOR WHEN ON.
- NTS - NOT TO SCALE.
- O - OVEN.
- RCBO - CIRCUIT PROTECTED VIA A 30mA RESIDUAL CURRENT DEVICE
- INTEGRAL - TO THE CIRCUIT BREAKER. 3-PHASE RCBO TO BE 4-POLE.
- REF - REFRIGERATOR.
- S - MOUNT SUSPENDED FROM CEILING.
- UNO - UNLESS NOTED OTHERWISE.
- WP - WEATHERPROOF TO IP56 UNO.
- 500 - NUMBER DENOTES MOUNTING HEIGHT AFFL.

DRAWING: **ELECTRICAL SERVICES**

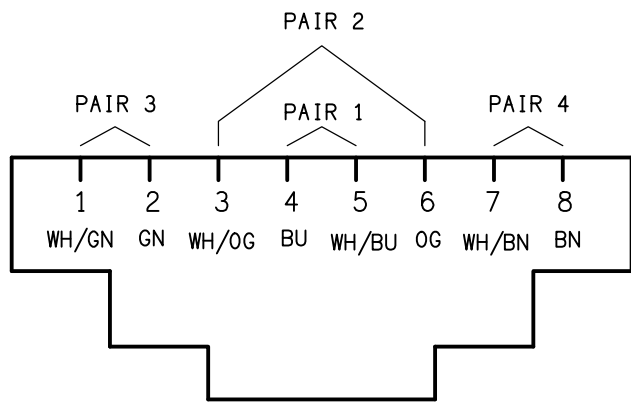
SCALE:	PROJECT NO:	DRAWING NO:	REVISION:
NOT TO SCALE AT A1	C2964a	E01	E

<p>ELECTRICAL DESIGN GROUP BRISBANE PTY LTD ACN 092 710 793</p>	<p>THE COPYRIGHT OF THIS DRAWING REMAINS THE PROPERTY OF THE ELECTRICAL DESIGN GROUP.</p>	<p>USE FIGURED DIMENSIONS IN PREFERENCE TO SCALE.</p>	<p>ALL DIMENSIONS TO BE VERIFIED ONSITE.</p>	<p> ELECTRICAL DESIGN GROUP ELECTRICAL BUILDING SERVICES CONSULTANTS BRISBANE GOLD COAST</p> <p>P.O.Box 15, Sherwood Q.4075 Phone: (07) 3278 4375 Email: brisbane@edg.net.au Web: www.edg.net.au</p>	<p>PROJECT: BURNSIDE ROAD, GILBERTON</p>	<p>DRAWING: ELECTRICAL SERVICES LEGEND & NOTES</p>	<p>SCALE: NOT TO SCALE AT A1</p>	<p>PROJECT NO: C2964a</p>	<p>DRAWING NO: E01</p>	<p>REVISION: E</p>
					<p>LOT 4 BURNSIDE ROAD, GILBERTON, QUEENSLAND</p>					

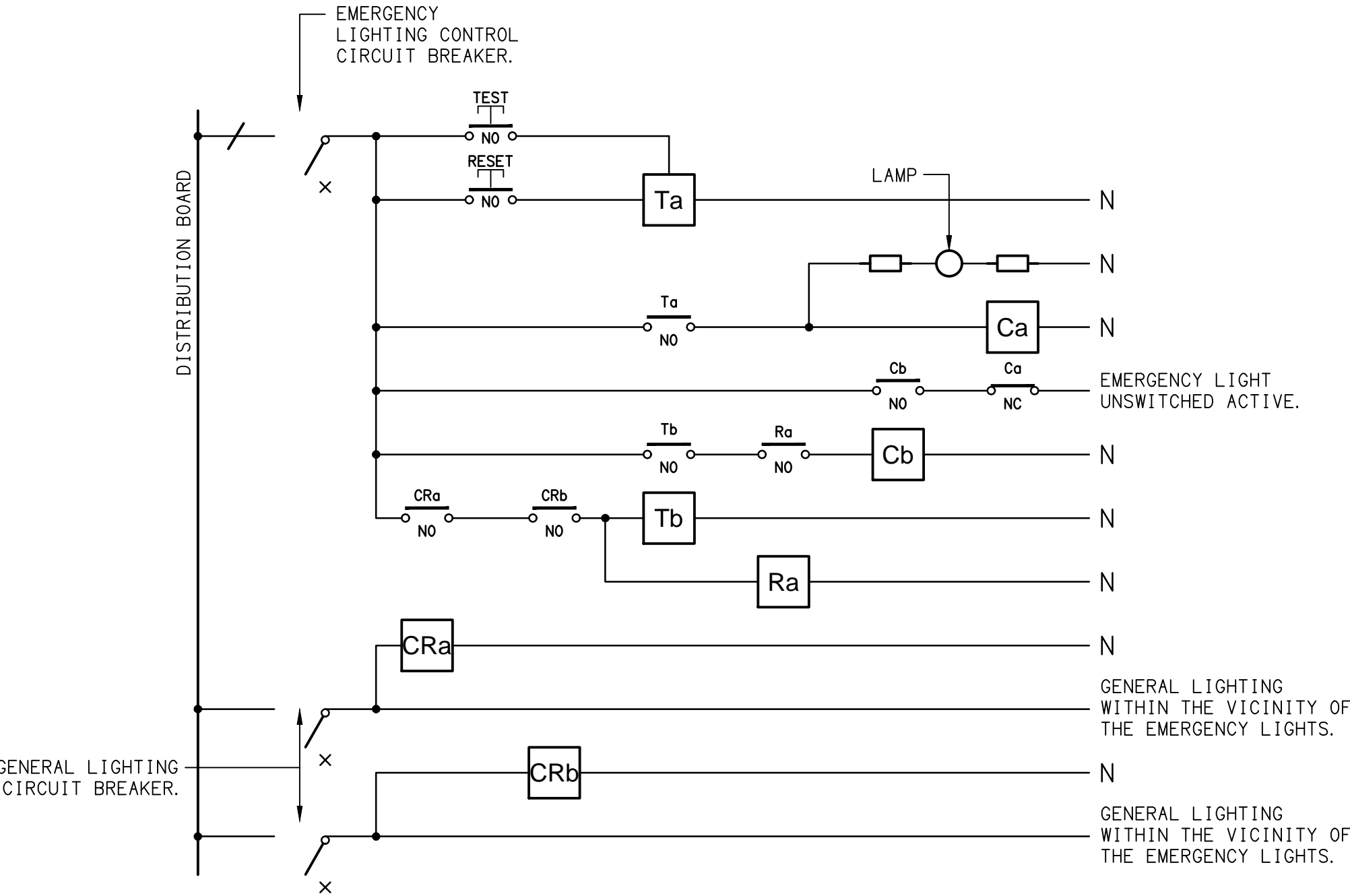


DETAIL
TYPICAL OUTLET MOUNTINGS
NOT TO SCALE

- EQUIPMENT:**
- TEST - TEST PUSH BUTTON MOUNTED ON THE DISTRIBUTION BOARD ESCUTCHEON.
 - RESET - RESET PUSH BUTTON MOUNTED ON THE DISTRIBUTION BOARD ESCUTCHEON.
 - LAMP - AMBER TEST INDICATING LAMP MOUNTED ON THE DISTRIBUTION BOARD ESCUTCHEON.
 - Ta - ADJUSTABLE 0-3 HOUR TIMED RELAY.
 - Tb - 15 MINUTE RUN-ON TIMER TO OPERATE UPON THE RETURN OF MAINS POWER.
 - Cx - CONTACTOR x.
 - CRx - CONTROL RELAY x.
 - Rx - RELAY x.

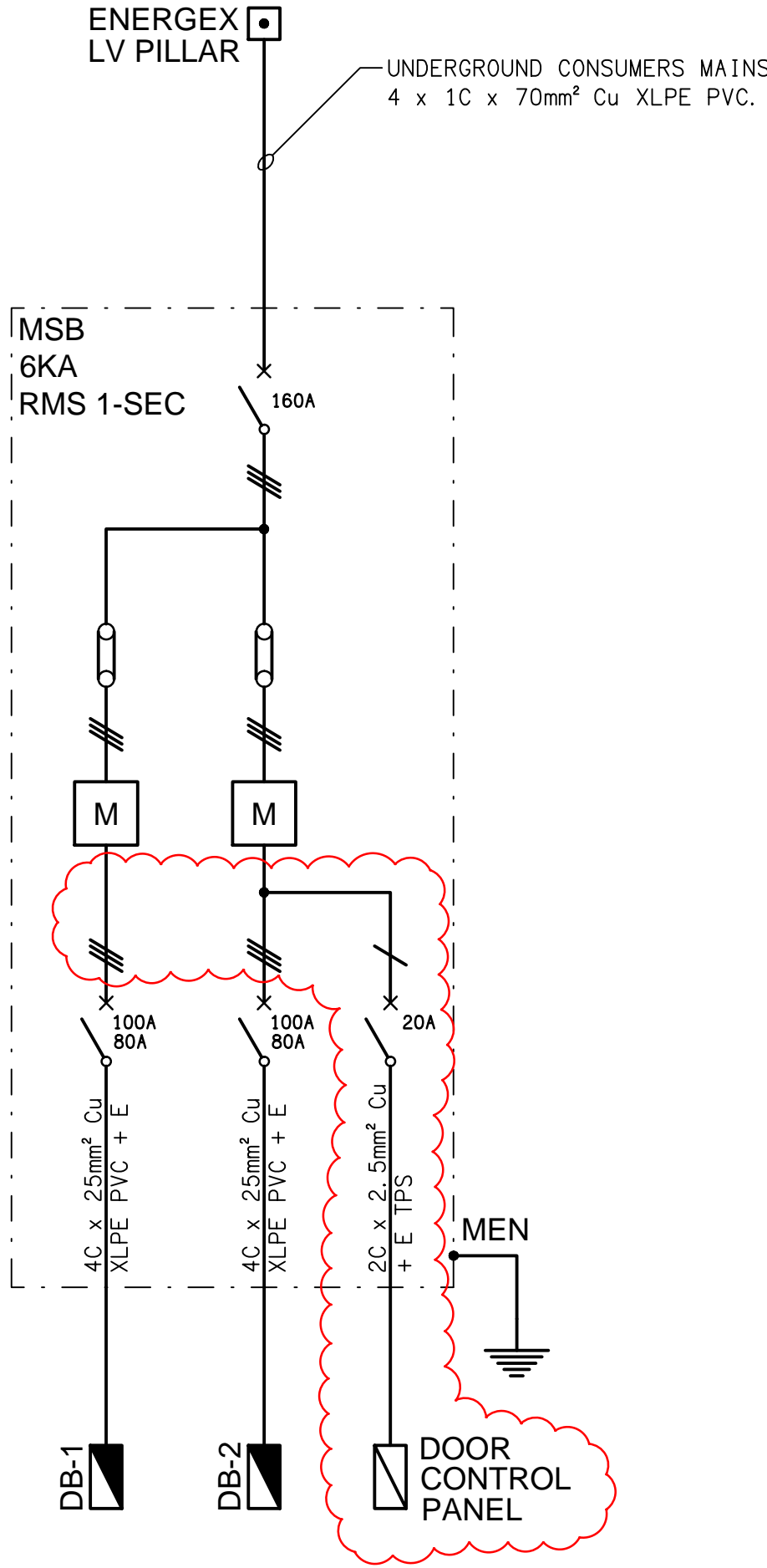


SCHEMATIC
RJ45 PINOUT CONFIGURATION
NOT TO SCALE



SCHEMATIC
EMERGENCY LIGHTING
NOT TO SCALE

- NOTES**
1. THE EMERGENCY LIGHT UNSWITCHED ACTIVE / GENERAL LIGHTING SWITCHED ACTIVE CIRCUIT ARRANGEMENT AND CONTROL IS TYPICAL FOR ALL CIRCUITS SUPPLYING EMERGENCY LIGHTS.
 2. PROVIDE ADDITIONAL CONTROL RELAYS (CRx) CONFIGURED AS PER CRa AND CRb FOR ALL ADDITIONAL LIGHTING CIRCUITS THAT SUPPLY LIGHTS IN THE VICINITY OF THE EMERGENCY LIGHTS.



SCHEMATIC
POWER CONFIGURATION
NOT TO SCALE

ELECTRICAL DESIGN GROUP BRISBANE
PTY LTD
ACN 092 710 793
TRADING AS:
ELECTRICAL DESIGN GROUP

THE COPYRIGHT OF THIS DRAWING
REMAINS THE PROPERTY OF THE
ELECTRICAL DESIGN GROUP.
USE FIGURED DIMENSIONS
IN PREFERENCE TO SCALE.
ALL DIMENSIONS TO BE
VERIFIED ONSITE.

ELECTRICAL DESIGN GROUP
ELECTRICAL BUILDING SERVICES CONSULTANTS
BRISBANE GOLD COAST

P.O.Box 15, Sherwood Q.4075
Phone: (07) 3278 4375
Email: brisbane@edg.net.au
Web: www.edg.net.au

PROJECT:
BURNSIDE ROAD, GILBERTON

LOT 4 BURNSIDE ROAD, GILBERTON, QUEENSLAND

C	CONSTRUCTION	17/04/2024
REV.	DESCRIPTION:	DATE:

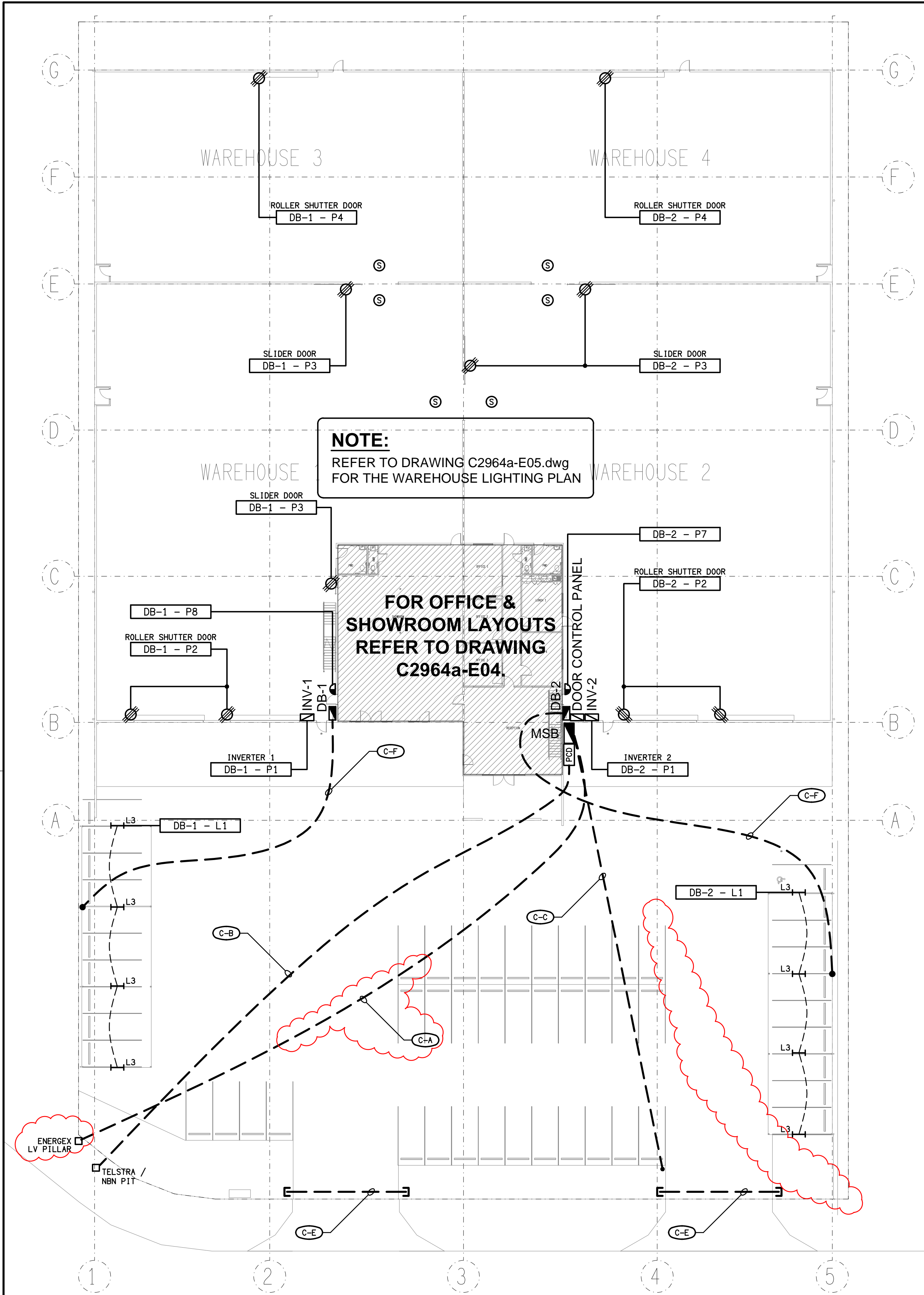
DRAWING:
ELECTRICAL SERVICES
SCHEMATICS & DETAILS

SCALE:
NOT TO SCALE AT A1

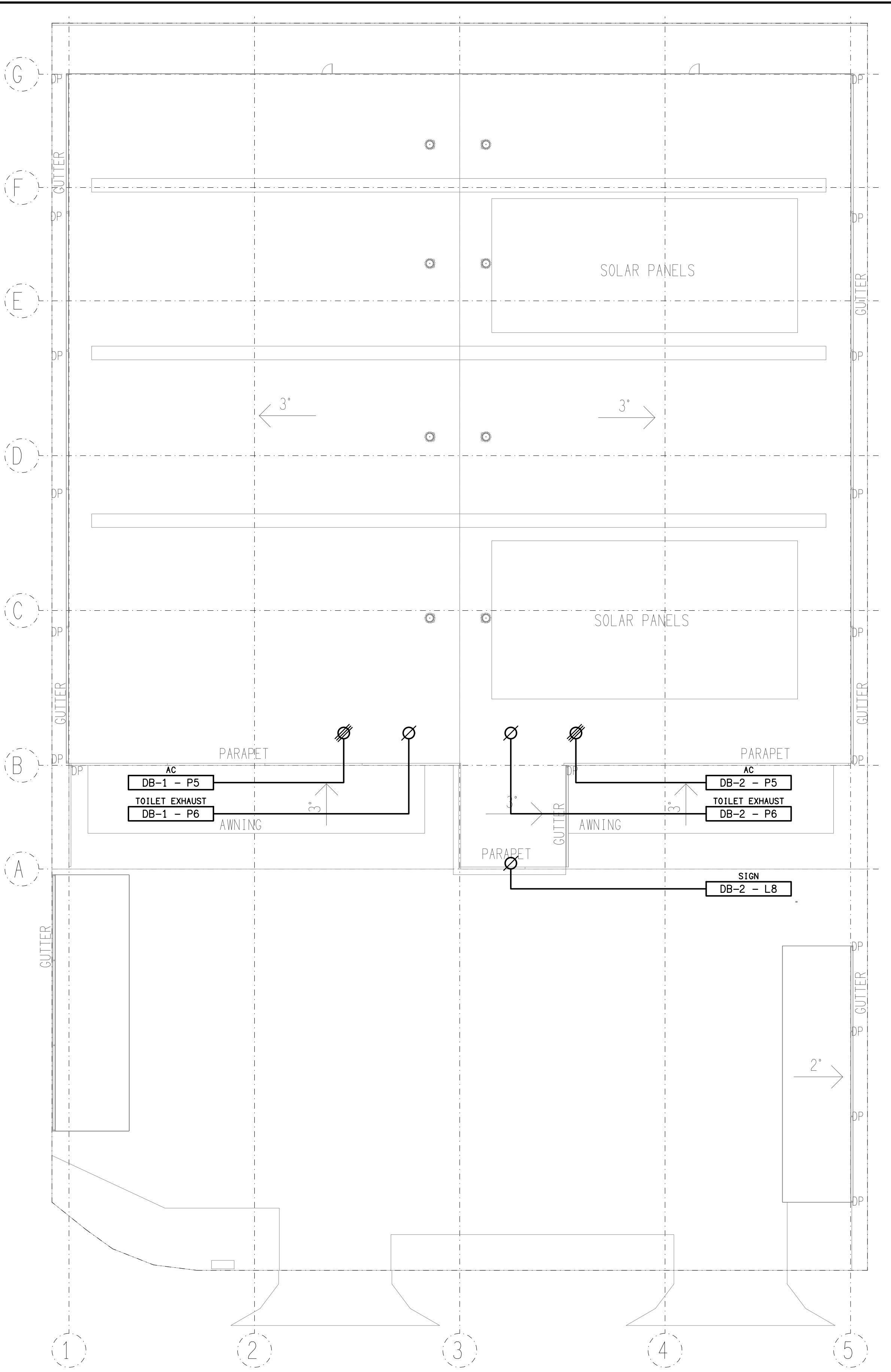
PROJECT NO:
C2964a

DRAWING NO:
E02

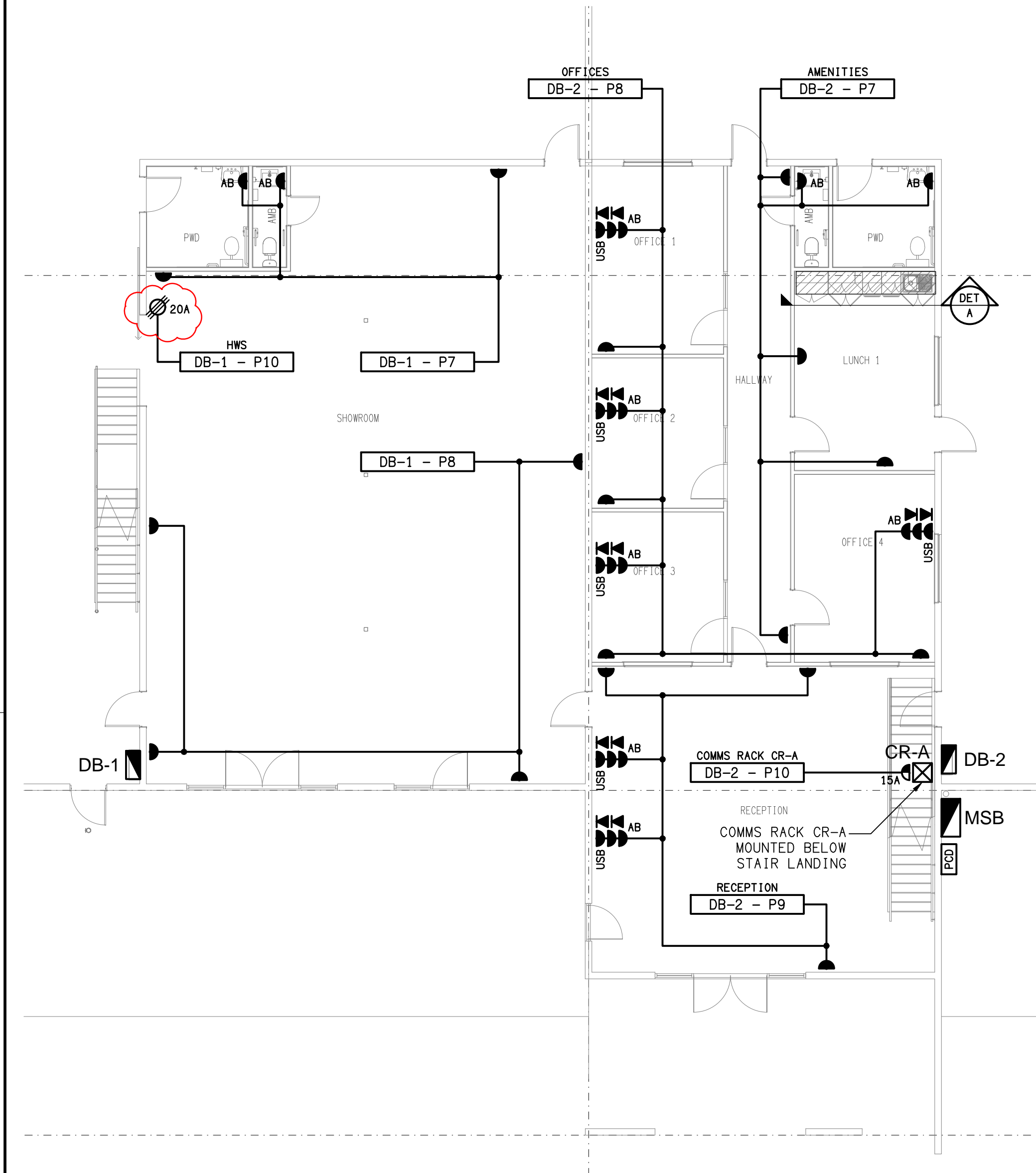
REVISION:
C



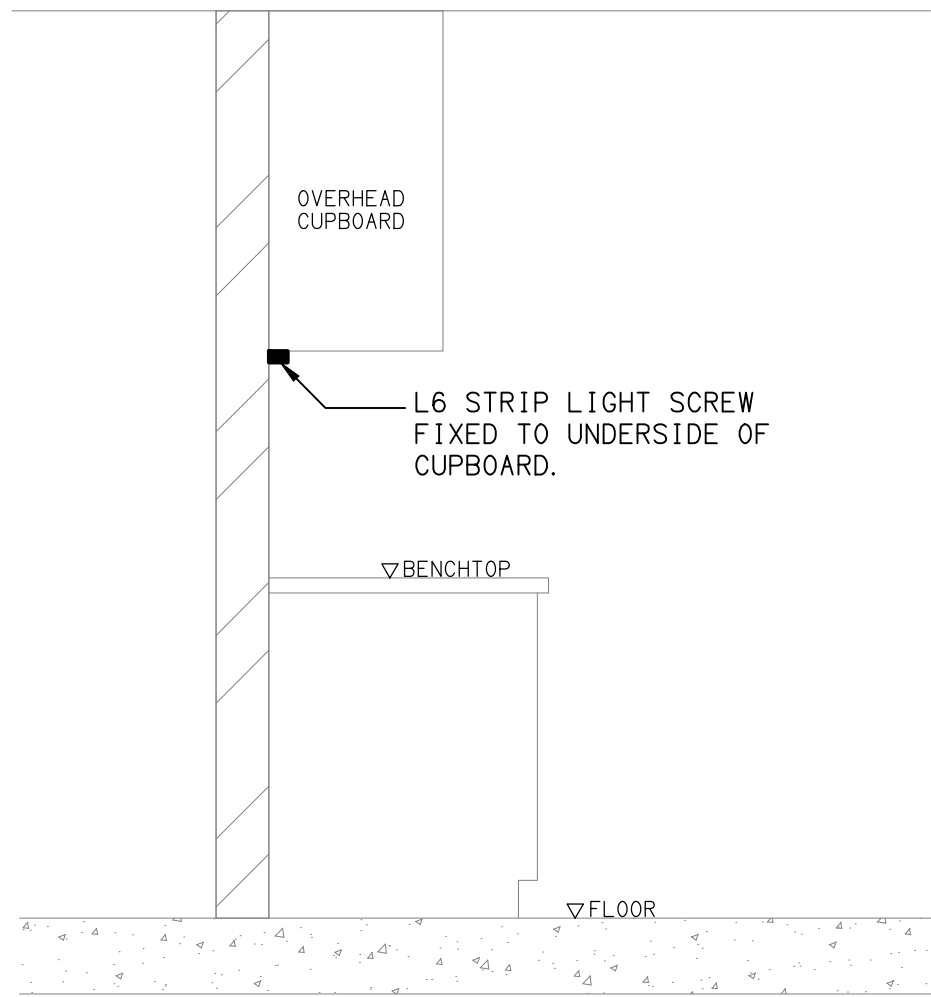
SITE PLAN
WAREHOUSE 1 & 2
SCALE 1: 250



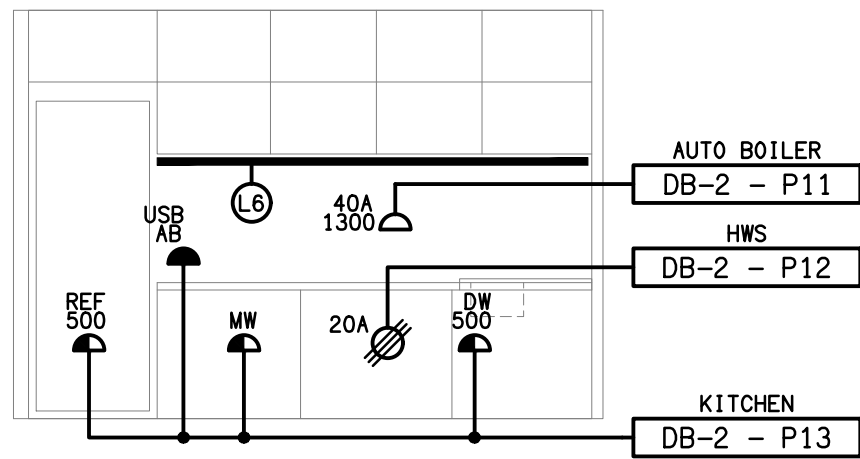
ROOF PLAN
WAREHOUSE 1 & 2
SCALE 1: 250



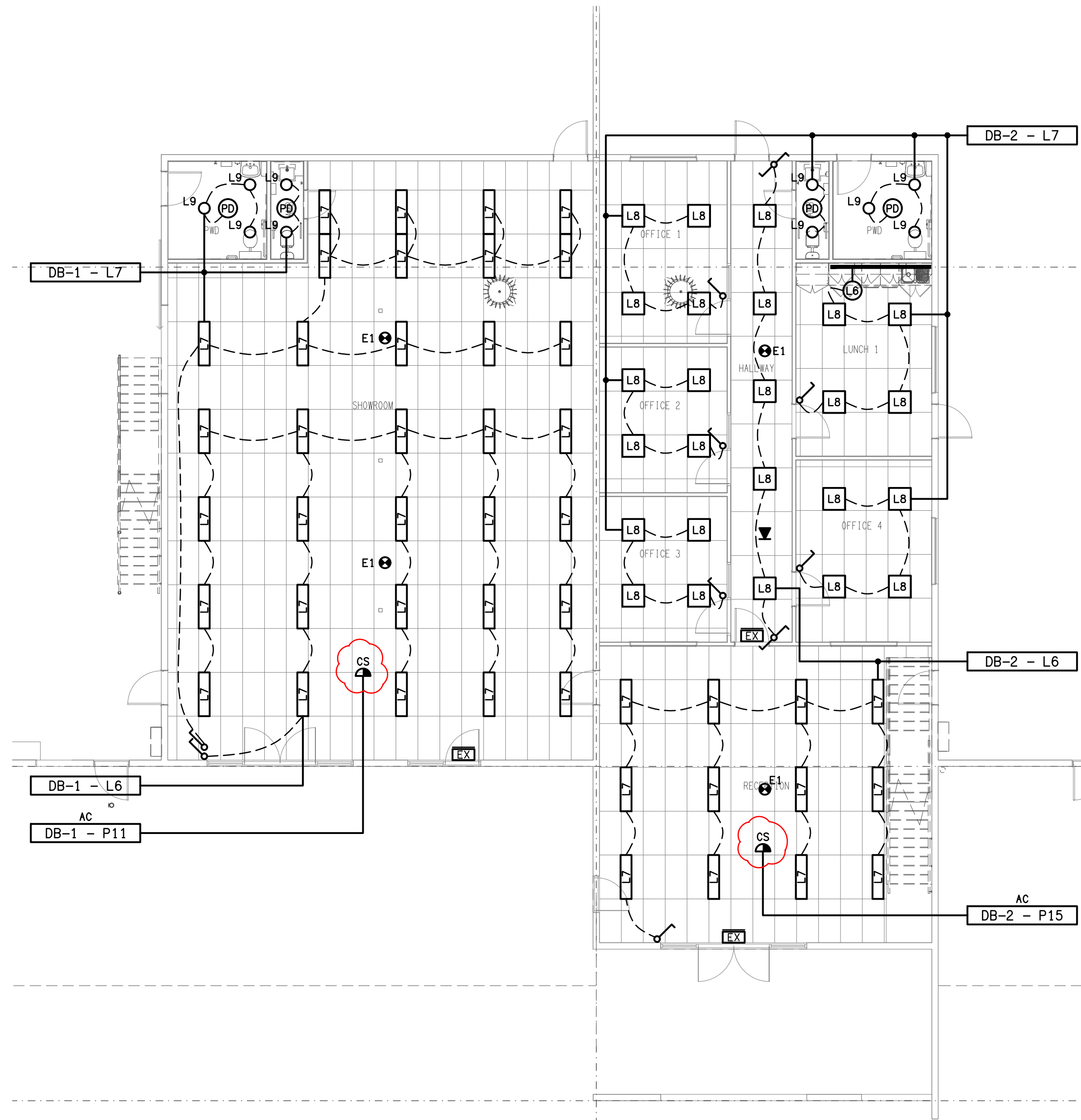
GROUND LEVEL
FLOOR PLAN
SCALE 1: 100



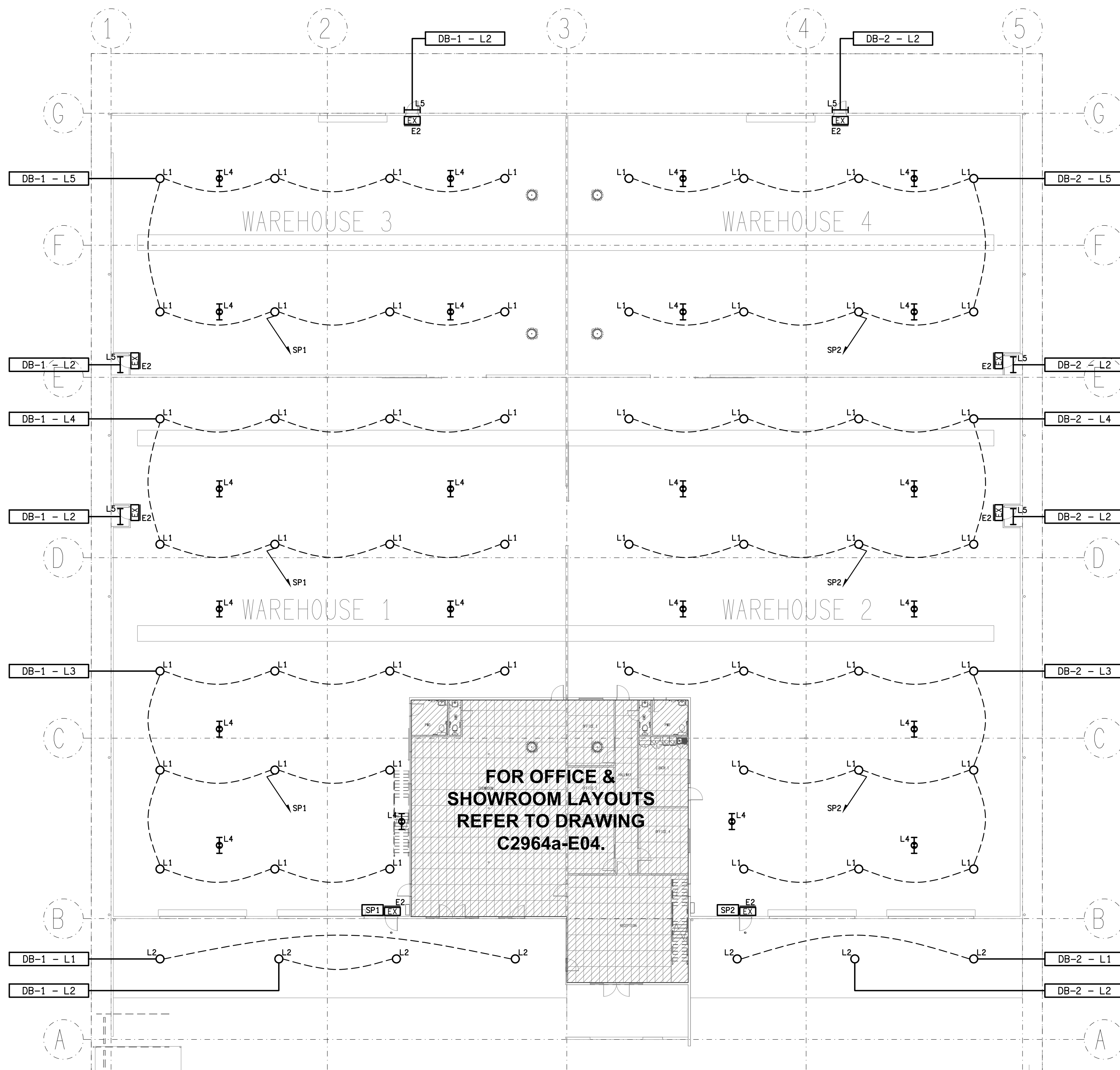
DETAIL B
TYPICAL "L6" STRIP LIGHT MOUNTING
NOT TO SCALE



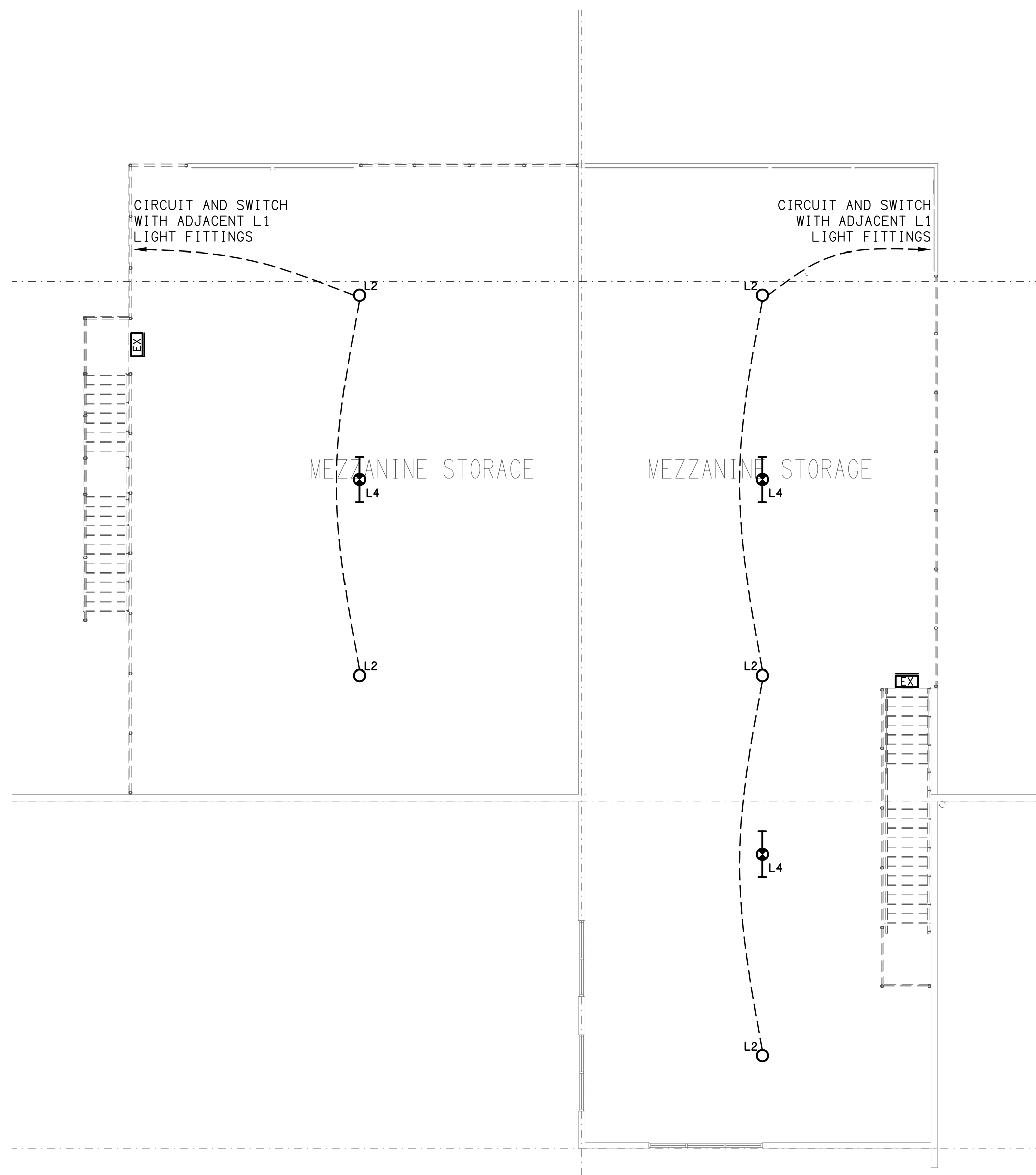
DETAIL A
LUNCH 1 KITCHENETTE ELEVATION
NOT TO SCALE



GROUND LEVEL
REFLECTED CEILING PLAN
SCALE 1: 100



GROUND LEVEL
REFLECTED CEILING PLAN
SCALE 1: 200



LEVEL 1
REFLECTED CEILING PLAN
SCALE 1: 100