

LEGEND

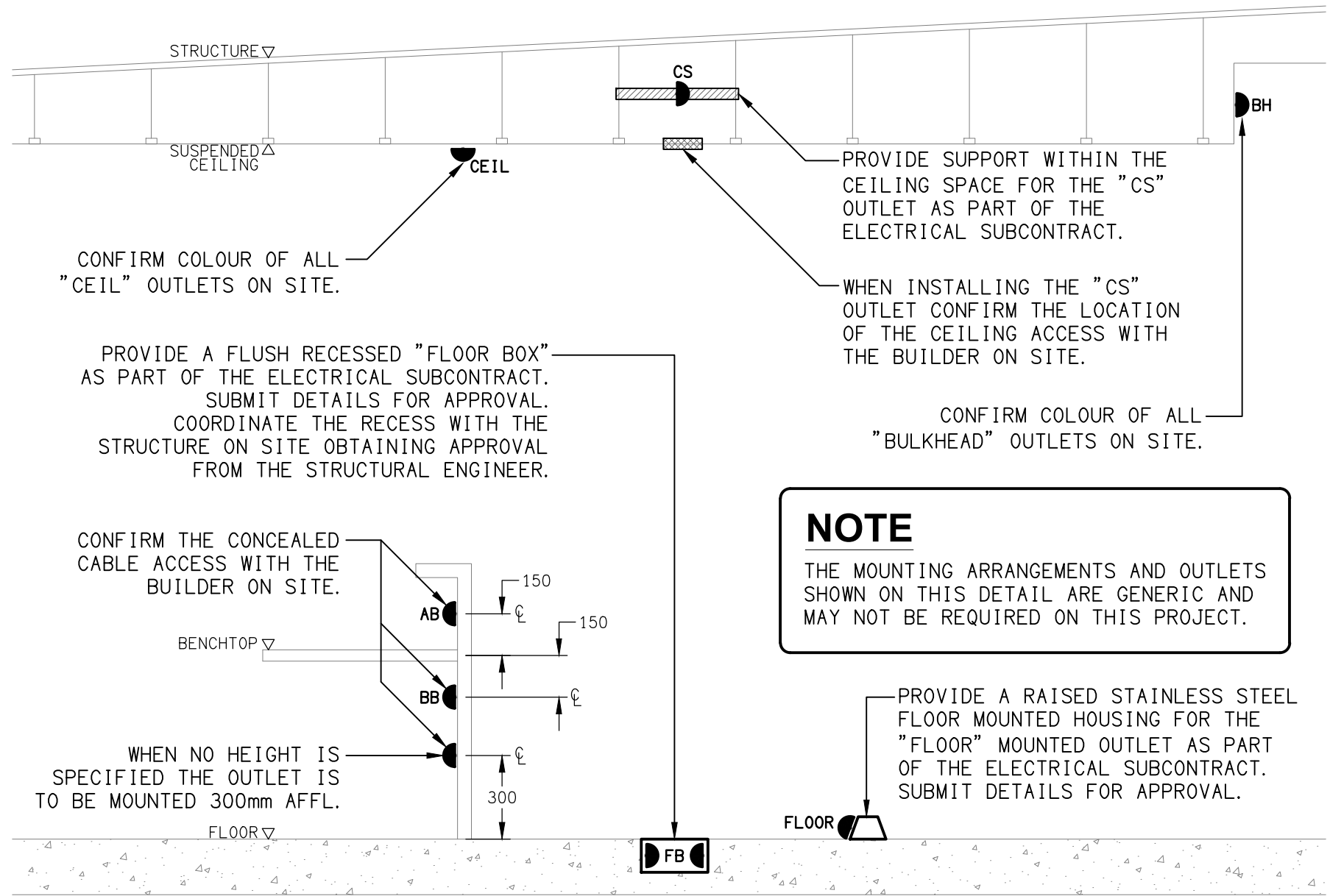
	ELECTRICAL SERVICES SWITCHBOARD.
	SWITCHBOARD / CONTROL PANEL NOT PROVIDED AS PART OF THE ELECTRICAL SUBCONTRACT.
	SINGLE POWER OUTLET.
	DOUBLE POWER OUTLET.
	DOUBLE POWER C/W INTEGRAL USB CHARGERS.
	DOUBLE LOUVRE POWER OUTLET. MOUNTING HEIGHT TO BE CONFIRMED BY LOUVRE SUPPLIER ON SITE.
	SPECIAL PURPOSE POWER OUTLET.
	SINGLE PHASE ISOLATOR.
	THREE PHASE ISOLATOR.
	SIGNAGE OUTLET.
	CABLE TRAY / LADDER, TYPE AS NOTED.
	CONDUIT ROUTE.
	CONDUIT ACCESS POINT.
	ELECTRICAL PIT, TYPE AS NOTED.
	ELECTRICAL FLOOR BOX, TYPE AS NOTED.
	ELECTRICAL TABLE BOX.
	HAND DRYER CONNECTION.
	LIGHTING PRESENCE DETECTOR SWITCH.
	LIGHTING CONTROL SWITCH PANEL, TYPE AS NOTED.
	ONE-WAY LIGHT SWITCH.
	TWO-WAY LIGHT SWITCH.
	CEILING FAN SPEED CONTROLLER (FSC).
	CIRCUIT LINE.
	SWITCH LINE.
	POWER CIRCUIT DESIGNATION. DENOTES DB AND CIRCUIT.
	LIGHTING CONTROL CHANNEL REFERENCE.
	ELECTRICAL EQUIPMENT AS NOTED.
	RJ45 COMMUNICATIONS OUTLET.
	RJ45 COMMUNICATIONS OUTLET C/W RECESS KIT.
	CCTV OUTLET.
	LIFT INTERFACE MODULE.
	ACCESS CONTROL GATE INTERFACE.
	ACCESS CONTROL CARD READER.
	ACCESS CONTROL DOOR ELECTRIC STRIKE.
	SECURITY ARMING / DISARMING KEY PANEL.
	SECURITY DIRECTIONAL MOTION DETECTOR.
	SECURITY 360DEG CEILING MOUNTED MOTION DETECTOR.
	SECURITY PRO-TRI-TECH DIRECTIONAL MOTION DETECTOR.
	SECURITY REED SWITCH.

LEGEND

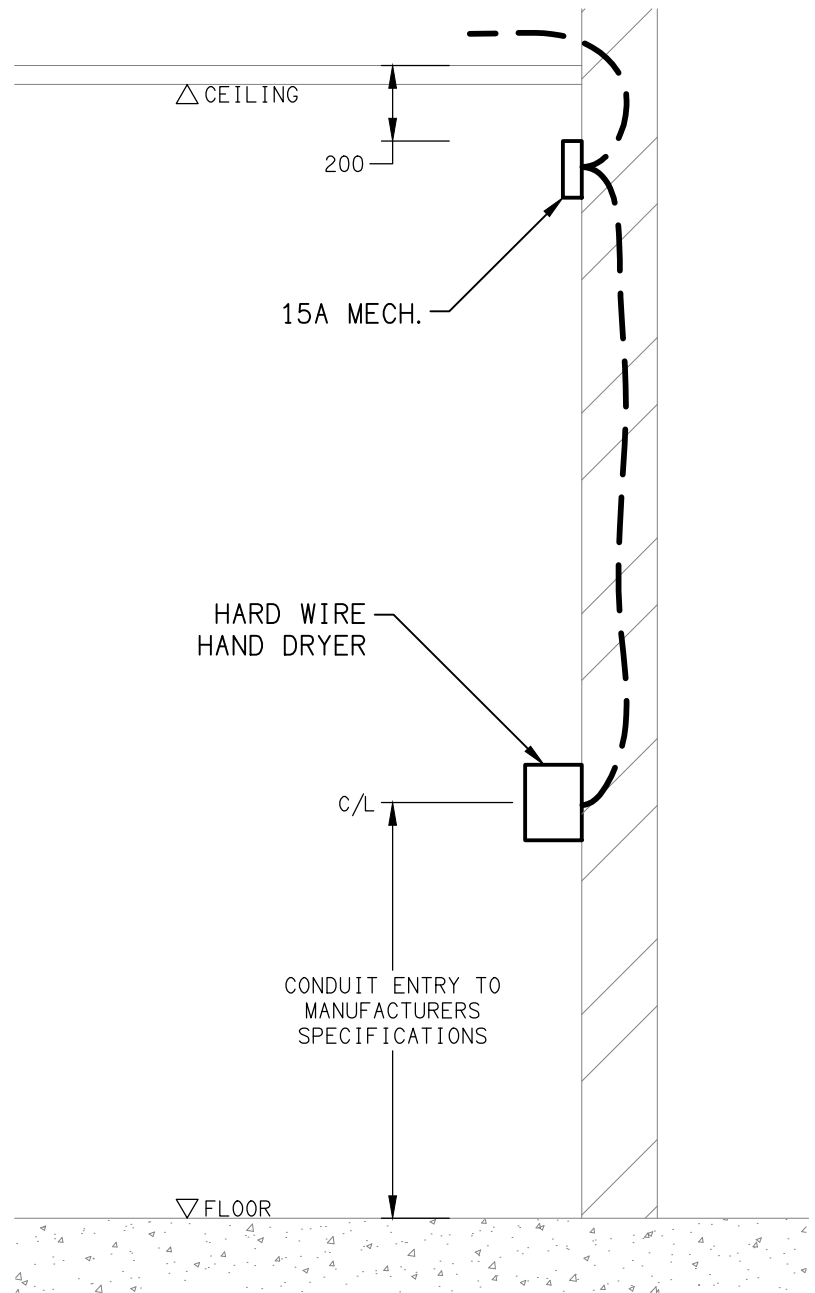
	HORN / HOOTER.
	RECESSED SPEAKER, UNLESS NOTED OTHERWISE.
	FIRE SMOKE DETECTOR.
	FIRE EVACUATION SPEAKER
	FIRE DOOR HOLDER.
	FIRE EVACUATION HORN.
	FIRE INDICATOR PANEL, TYPE AS NOTED.
	ENERGEN METER.
	MAXIMUM DEMAND INDICATORS.
	FUSE.
	SINGLE PHASE.
	THREE PHASE.
	CURRENT TRANSFORMER C/W REMOVABLE LINK.
	FUSE LINK.
	COMBINED FUSE SWITCH.
	CIRCUIT BREAKER.
	ISOLATOR.
	RESIDUAL CURRENT DEVICE.
	CONTACTOR - NORMALLY OPEN.
	CONTACTOR - NORMALLY CLOSED.
	REFER TO DETAIL NOTED FOR THE AREA SHOWN HATCHED. ADDITIONAL OUTLETS & FITTINGS MAY BE SHOWN ON DETAIL.
	SM: DENOTES OUTLET / FITTING TO BE SURFACE MOUNTED.
	E1: GENERAL LED EMERGENCY LIGHT.
	EX: EMERGENCY LED EXIT LIGHT.
	EX WP: WEATHERPROOF EMERGENCY LED EXIT LIGHT.
	F1: CLASSROOM CEILING FAN.
	F2: CIRCULATION CEILING FAN.
	Lx: LIGHT FITTING C/W NON-MAINTAINED EMERGENCY BATTERY PACK. TYPE AS NOTED.
	L1: 3300 LUMEN 600 x 600 T-BAR FLAT PLATE FITTING.
	L2: 3300 LUMEN 600 x 600 PLASTERBOARD FLAT PLATE FITTING.
	L3: RECESSED DOWNLIGHT.
	L4: RECESSED DOWNLIGHT.
	L5: RECESSED LINEAR STRIP LIGHT. 3400 + 33600 + 2600 LENGTHS.
	L6: RECESSED LINEAR STRIP LIGHT. 11000 + 34000 LENGTHS.
	L7: 2500 LUMEN 600 x 600 T-BAR FLAT PLATE FITTING.
	L8: RECESSED DOWNLIGHT.
	L9: 8600 LONG SURFACE MOUNTED LINEAR LED STRIP LIGHT.
	L10: 2500 LUMEN RECESSED DOWNLIGHT.
	L11: RECESSED LINEAR STRIP LIGHT. 6800 + 3900 LENGTHS.

LEGEND

	L12: 2500 LUMEN ADJUSTABLE RECESSED DOWNLIGHT.
	L13: LED STRIP LIGHT MOUNTED UNDER THE OVERHEAD CUPBOARD.
	L14: 5000 LUMEN SURFACE CAN DOWNLIGHT.
	L15: 670 DIA SURFACE MOUNTED POOL LIGHT.
	L16: 1200 LONG UNSWITCHED IP66 NON-MAINTAINED SURFACE MOUNTED EMERGENCY LIGHT.
	L17: 1200 LONG SURFACE MOUNTED IP66 BATTEN C/W INTEGRAL SENSOR.
	L18: 1500 LUMEN RECESSED POOL DOWNLIGHT.
	L19: 2500 LUMEN SURFACE CAN DOWNLIGHT.
	L20: 2500 LUMEN 600 x 600 PLASTERBOARD FLAT PLATE FITTING.
	L21: RECESSED DOWNLIGHT.
	L22: RECESSED DOWNLIGHT.
	L23: 1200 LONG SURFACE MOUNTED IP56 BATTEN.
	L24: EXTERNAL FLOOD LIGHT.
	L25: RECESSED DOWNLIGHT.
	L26: EXISTING RECESSED DOWNLIGHT.
	L27: SURFACE CAN DOWNLIGHT.
	S1: SURFACE CAT-6 PLUG FROM THE COMMUNICATIONS RACK.
	S2: SURFACE CAT-6 PLUG C/W INTERCONNECTING CABLE.
	S3: RECESSED CAT-6 PLUG C/W INTERCONNECTING CABLE.
	S4: RECESSED CAT-6 PLUG FROM THE COMMUNICATIONS RACK.
	PIEZO SIREN.
	LOCKDOWN BUTTON.



DETAIL
TYPICAL OUTLET MOUNTINGS
NOT TO SCALE



DETAIL
HAND DRYER CONNECTION
NOT TO SCALE