

C3227a - TOOWONG KIA & MITSUBISHI

C3227a-0001(P).xls

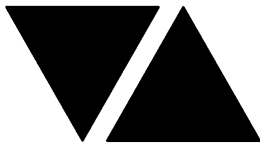
ELECTRICAL SERVICES CONTRACT DOCUMENT SCHEDULE

REVISION P - 30 SEPTEMBER 2025

ISSUING INFORMATION					DATE OF ISSUE									
DAY MONTH YEAR REASON FOR ISSUE						06	22	10	17	30				
						08	08	09	09	09				
						25	25	25	25	25				
						C	C	C	C	C				
BA = BUILDING APPROVAL					C = CONSTRUCTION		N = COORDINATION		P = PRELIMINARY			T = TENDER		

DISTRIBUTION				NUMBER OF COPIES											
WWW.EDG.NET.AU					1E	1E	1E	1E	1E	1E					
WIM ARCHITECTS					1E	1E	1E	1E	1E						
P = PRINT				T = TRACING			D = DISC			E = EMAIL			F = FAX		

[illegible]



ELECTRICAL DESIGN GROUP

ELECTRICAL BUILDING SERVICES CONSULTANTS

P.O. Box 15, SHERWOOD Q. 4075

Phone: (07) 3278 4375 Fax: (07) 3716 0222

Web Site: www.edg.net.au Email: brisbane@edg.net.au

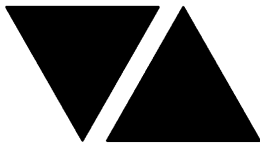
C3227a - TOOWONG KIA & MITSUBISHI

C3227a-0002(G).xls

ELECTRICAL EQUIPMENT SCHEDULE

REVISION G - 30 SEPTEMBER 2025

THE EQUIPMENT SUPPLIER CONTACT DETAILS MAY BE AVAILABLE ON THE EDG WEBSITE VIA THE FOLLOWING LINK www.edg.net.au/links.html					
TYPE	LAMPS	DESCRIPTION	COLOUR / ACCESSORY	CATALOGUE No	REV
L1	RED LED 9W/M	FLUSH RECESSED LED FLEX AS PER THE L1 LIGHTING ELEVATION C/W REMOTE DRIVER / POWER SUPPLY MOUNTING AS PER THE ARCHITECTURAL DETAIL BY LUMIQUI DRAWING LAD01 12/07/2024	RED	LUMIQUI CXGB2016B	E
L2	3000K LED 20W / M	FLUSH CEILING RECESSED EXTRUSION C/W OPAL DIFFUSER REMOTE DRIVERS MOUNTING AS PER THE ARCHITECTURAL DETAIL BY LUMIQUI DRAWING LAD01 12/07/2024	WHITE	LUMIQUI CXSNN80B	E
L3	3000K LED 25W / M	FLUSH RECESSED EXTRUSION C/W OPAL DIFFUSER RUNNING VERTICALLY AS PER THE ELEVATIONS. REMOTE DRIVER MOUNTING AS PER THE ARCHITECTURAL DETAIL BY LUMIQUI DRAWING LAD01 12/07/2024	WHITE	LUMIQUI CXSNN80B	E
L4	2 x 24W 4000K LED EACH	TWO HEAD RECTANGULAR DOWNLIGHT FITTING C/W REMOTE DRIVER MOUNT THE FITTING IN THE CEILING RECESS	BLACK	LUMIQUI CES802F-L 111	E
L5	35W 4000K LED	RECESSED DOWNLIGHT C/W REMOTE DRIVER	BLACK	LUMIQUI CES801F-P 11	E
L6	15W 4000K LED	RECESSED DOWNLIGHT C/W REMOTE DRIVER	WHITE TRIM	LUMIQUI KUWAIT III 123060	E
L7	12W LED 3000K	RECESSED DOWNLIGHT C/W REMOTE DRIVER	WHITE	LUMIQUI CEL61075-S	E
L8	28W LED 3000K	RECESSED DOWNLIGHT C/W REMOTE DRIVER	WHITE	GAMMA ILLUMINATION COBALT 1403-3K-28W	C
L9	36W LED 4000K	1200 LONG IP65 DIFFUSED BATTEN C/W INTEGRAL ELECTRONIC CONTROL GEAR AND A NON MAINTAINED AS2293 EMERGENCY PACK SUSPENDED / SURFACE MOUNTED AS REQUIRED. THE L9 FITTINGS ARE NOT SWITCHED AND ARE TO ONLY OPERATE UPON POWER SUPPLY FAILURE IN ACCORDANCE WITH AS2293	NA	GAMMA STORM 1558-CCT-36	C
L10	34W 4000K LED	300 X 1200 LAY IN FLAT PLATE LED FITTING C/W REMOTE DRIVER AND RECESSED PB KIT	WHITE TRIM	GAMMA ILLUMINATION AXIS 1549-4K-34W C/W FLUSH RECESS PB KIT	A
L11	30W / M 5700K LED CRI 90	ROD SUSPENDED RECTANGULAR EXTRUSION WITH CURVED CORNERS INTEGRAL DRIVER AND OPAL DIFFUSER	WHITE	LUMIQUI CRX5590-C	E
L12	NOT USED				B



ELECTRICAL DESIGN GROUP

ELECTRICAL BUILDING SERVICES CONSULTANTS

P.O. Box 15, SHERWOOD Q. 4075

Phone: (07) 3278 4375 Fax: (07) 3716 0222

Web Site: www.edg.net.au Email: brisbane@edg.net.au

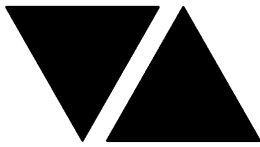
C3227a - TOOWONG KIA & MITSUBISHI

C3227a-0002(G).xls

ELECTRICAL EQUIPMENT SCHEDULE

REVISION G - 30 SEPTEMBER 2025

THE EQUIPMENT SUPPLIER CONTACT DETAILS MAY BE AVAILABLE ON THE EDG WEBSITE VIA THE FOLLOWING LINK www.edg.net.au/links.html					
TYPE	LAMPS	DESCRIPTION	COLOUR / ACCESSORY	CATALOGUE No	REV
L13	22W LED 4000K	WALL MOUNTED RECTANGULAR DOWN LIGHT C/W INTEGRAL DRIVER MOUNT 300 ABOVE THE DOOR HEAD	BLACK	GAMMA ILLUMINATION TOMMASO 1276-4K-22W 1403-4K-28W	A
L14	100W 4000K LED	LOWER OUTPUT SUSPENDED HIGH BAY C/W INTEGRAL DRIVER SUSPEND AS HIGH AS PRACTICAL	BLACK	GAMMA ILLUMINATION ORBIT 881538-4K-WFL	A
L15	150W 4000K LED	HIGHER OUTPUT SUSPENDED HIGH BAY C/W INTEGRAL DRIVER SUSPEND AS HIGH AS PRACTICAL	BLACK	GAMMA ILLUMINATION ORBIT 881483-4K-WFL	A
L16	A SINGLE HORIZONTAL RUN UNDER THE OVERHEAD CUPBOARDS HARD AGAINST THE SPLASHBACK LED STRIP LIGHT 4000K WHITE LEDS AT 12MM SPACING WITH REMOTE CONTROL GEAR. THE SUPPLIER IS TO CUT / JOIN THE LED STRIPS TO SUIT THE SITE DIMENSIONS. DO NOT CUT THE LED STRIPS ON SITE SCREW FIX THE ALUMINIUM SUPPORT IN PLACE.			NEON PRODUCTS AUSTRALIA LF-DFB-NW-300-12 + PR-LIN172153-F	A
L17	41W 2700K	1800 LONG KIA RECEPTION PENDANT CONFIRM THE SUSPENSION ON SITE WITH THE ARCHITECT	GREY NICKEL	LUMIQUI MD25141-3L-1830	E
L18	13W 4000K LED	SUSPENDED PENDANT	BLACK	LUMIQUI P8165	E
L19	15W 4000K LED	RECESSED DOWNLIGHT C/W REMOTE DRIVER	WHITE TRIM	LUMIQUI KUWAIT III 123060	E
L20	LED	SUSPENDED LINEAR LIGHT	BLACK	FAGERHULT NOTOR 65 OPAL RAL9005	E
L21	15W 4000K LED	RECESSED DOWNLIGHT C/W REMOTE DRIVER	WHITE	LUMIQUI CEJ61075-S	E
L22	EXISTING DOWNLIGHT TO BE RETAINED AND RESUPPLIED / SWITCHED AS INDICATED				E
E1	LED	EMERGENCY LIGHT: RECESSED NON-MAINTAINED EMERGENCY LIGHT. AS2293 CLASSIFICATION C0-D40 - C90-D40.	WHITE	STANILITE SF1LEDP LITHIUM BATTERY	A
E2	LED	EMERGENCY LIGHT: RECESSED NON-MAINTAINED EMERGENCY LIGHT. AS2293 CLASSIFICATION C0-D40 - C90-D40.	BLACK	STANILITE SF1LEDP BLACK LITHIUM BATTERY	E



ELECTRICAL DESIGN GROUP

ELECTRICAL BUILDING SERVICES CONSULTANTS

P.O. Box 15, SHERWOOD Q. 4075

Phone: (07) 3278 4375 Fax: (07) 3716 0222

Web Site: www.edg.net.au Email: brisbane@edg.net.au

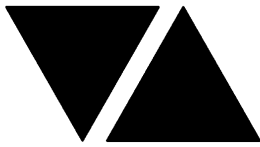
C3227a - TOOWONG KIA & MITSUBISHI

C3227a-0002(G).xls

ELECTRICAL EQUIPMENT SCHEDULE

REVISION G - 30 SEPTEMBER 2025

THE EQUIPMENT SUPPLIER CONTACT DETAILS MAY BE AVAILABLE ON THE EDG WEBSITE VIA THE FOLLOWING LINK www.edg.net.au/links.html					
TYPE	LAMPS	DESCRIPTION	COLOUR / ACCESSORY	CATALOGUE No	REV
EX	LED	EXIT LIGHT: MAINTAINED 24M VIEWING DISTANCE EXIT LIGHT C/W DIFFUSERS & DIRECTIONAL ARROWS AS SHOWN AND A IP56 HOUSING CEILING OR WALL MOUNT BETWEEN 2100mm & 2700mm AFFL IF THERE IS NO VERTICAL SURFACE TO MOUNT THE FITTING ON WITHIN THIS RANGE CONFIRM THE MOUNTING HEIGHT WITH THE ENGINEER. AS2293 CLASSIFICATION C0-D3.2 - C90-E2.	WHITE LOGO GREEN BACKGROUND WHITE BODY	STANILITE PLQLEDP LITHIUM BATTERY	A
PROXIMITY DETECTOR SWITCH (PD)		ADJUSTABLE FLUSH RECESSED 360 DEGREE PIR PRESENCE DETECTOR TO OPERATE THE ASSOCIATED LIGHTS FOR A PRE-SET AMOUNT OF TIME. ADJUST THE TIME AND SENSITIVITY ON SITE AS DIRECTED BY THE ENGINEER. SUBMIT DETAILS OF THE MOVEMENT DETECTOR SWITCH FOR APPROVAL PRIOR TO ORDERING	WHITE	CLIPSAL	A
LIGHTING CONTROL SWITCH PANEL (SP1)		WALL MOUNTED MULTI GANG SWITCH PANEL TO CONTAIN LABELLED SWITCHES AS PER THE SP1 DETAIL. PROVIDE BLACK ENGRAVING ON THE FACEPLATE TO INDICATE THE SWITCH USE. PROVIDE A SHOP DRAWING OF SP1 FOR APPROVAL.	WHITE	CLIPSAL C2000 SERIES	B
LIGHTING CONTROL SWITCH PANEL (SP2)		WALL MOUNTED MULTI GANG SWITCH PANEL TO CONTAIN LABELLED SWITCHES AS PER THE SP2 DETAIL. PROVIDE BLACK ENGRAVING ON THE FACEPLATE TO INDICATE THE SWITCH USE. PROVIDE A SHOP DRAWING OF SP2 FOR APPROVAL.	WHITE	CLIPSAL C2000 SERIES	B
LIGHTING CONTROL SWITCH PANEL (SP3)		WALL MOUNTED MULTI GANG SWITCH PANEL TO CONTAIN LABELLED SWITCHES AS PER THE SP3 DETAIL. PROVIDE BLACK ENGRAVING ON THE FACEPLATE TO INDICATE THE SWITCH USE. PROVIDE A SHOP DRAWING OF SP3 FOR APPROVAL.	WHITE	CLIPSAL C2000 SERIES	B
LIGHTING CONTROL SWITCH PANEL (SPK)		WALL MOUNTED MULTI GANG SWITCH PANEL TO CONTAIN LABELLED SWITCHES AS PER THE SPK DETAIL. PROVIDE BLACK ENGRAVING ON THE FACEPLATE TO INDICATE THE SWITCH USE. PROVIDE A SHOP DRAWING OF SPK FOR APPROVAL.	WHITE	CLIPSAL C2000 SERIES	B
CHANNEL x		CONTROL CHANNEL WITH A NUMERICAL REFERENCE. REFER TO THE POWER AND LIGHTING CONTROL SCHEMATIC / SCHEDULE			B
SINGLE POWER OUTLET		SINGLE POWER OUTLET C/W CIRCUIT IDENTIFICATION ON THE FACEPLATE BEHIND THE SURROUND MOUNT AT 300 AFFL U.N.O.	WHITE GENERAL, BLACK WORKSHOP	CLIPSAL C2000 SERIES	A



ELECTRICAL DESIGN GROUP

ELECTRICAL BUILDING SERVICES CONSULTANTS

P.O. Box 15, SHERWOOD Q. 4075

Phone: (07) 3278 4375 Fax: (07) 3716 0222

Web Site: www.edg.net.au Email: brisbane@edg.net.au

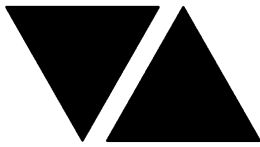
C3227a - TOOWONG KIA & MITSUBISHI

C3227a-0002(G).xls

ELECTRICAL EQUIPMENT SCHEDULE

REVISION G - 30 SEPTEMBER 2025

THE EQUIPMENT SUPPLIER CONTACT DETAILS MAY BE AVAILABLE ON THE EDG WEBSITE VIA THE FOLLOWING LINK www.edg.net.au/links.html					
TYPE	LAMPS	DESCRIPTION	COLOUR / ACCESSORY	CATALOGUE No	REV
DOUBLE POWER OUTLET		DOUBLE POWER OUTLET C/W CIRCUIT IDENTIFICATION ON THE FACEPLATE BEHIND THE SURROUND MOUNT AT 300 AFFL U.N.O.	WHITE GENERAL, BLACK WORKSHOP	CLIPSAL C2000 SERIES	A
POWER OUTLET USB		DOUBLE POWER OUTLET C/W USB A AND USB C CHARGER , CIRCUIT IDENTIFICATION ON THE FACEPLATE BEHIND THE SURROUND MOUNT ABOVE BENCH	WHITE	CLIPSAL C2000 SERIES FACEPLATE	F
SPECIAL PURPOSE OUTLET		SPECIAL PURPOSE OUTLET TYPE AS NOTED. MOUNT AT 1350mm AFFL U.N.O. RATING 20A U.N.O. CONNECT TO EQUIPMENT VIA FLEXIBLE CONDUIT.			A
WEATHERPROOF POWER OUTLET (WP)		IP54 WEATHERPROOF SINGLE / DOUBLE POWER OUTLET AS NOTED ON DRAWING C/W COVER FLAP OVER SOCKET. MOUNT AT MINIMUM 1100mm AFFL U.N.O. RATING 10A U.N.O.	-	CLIPSAL WSCF227F	A
SINGLE-PHASE ISOLATOR		SINGLE-PHASE WEATHERPROOF ISOLATOR. MOUNT AT 1350mm AFFL U.N.O. RATING 20A U.N.O. CONNECT TO EQUIPMENT VIA FLEXIBLE CONDUIT.	-	CLIPSAL WHT20	A
THREE-PHASE ISOLATOR		THREE-PHASE WEATHERPROOF ISOLATOR. MOUNT AT 1350mm AFFL U.N.O. RATING 20A U.N.O. CONNECT TO EQUIPMENT VIA FLEXIBLE CONDUIT. "RSD" DENOTES ROLLER SHUTTER DOOR SUPPLY - COORDINATE LOCATION ONSITE WITH MOTOR.	-	CLIPSAL WHT35	A
HAND DRYER CONNECTION (HD)		20A ISOLATING SWITCH WALL MOUNTED AT 2400mm AFFL AND CONNECTED TO THE HAND DRYER UNIT AS PER DETAIL.	WHITE	CLIPSAL C2000 SERIES 30USM	A
EV CHARGER (EV1)		PROVIDE A CONCEALED 50 DIA CONDUIT AND DRAW WIRE FROM DB-A TO THE FUTURE EV CHARGER POSITION			D
EV CHARGER (EV2)		PROVIDE A CONCEALED 80 DIA CONDUIT AND DRAW WIRE FROM THE MSB TO THE FUTURE EV CHARGER POSITION			D
ELECTRIC VEHICLE CHARGING ISOLATION SWITCH (CIS)		ELECTRIC VEHICLE CHARGING ISOLATION SWITCH PUSH BUTTON WIRED TO THE EV CHARGER SUPPLY CIRCUIT BREAKER SHUNT TRIP TO ISOLATE THE POWER TO THE ELECTRIC VEHICLE CHARGERS. MOUNTED AT 1800mm AFFL UNLESS NOTED OTHERWISE. PROVIDE COLOURED ENGRAVED TEXT AS PER THE CIS ELEVATION.	WHITE	CLIPSAL C2000 SERIES 30USM	G
CAT 6 COMMUNICATIONS OUTLET		RJ45 CAT-6 COMMUNICATIONS OUTLET, CABLED BACK TO THE COMMUNICATIONS RACK CR-A TERMINATED ONTO FACILITY PATCH PANELS VIA 4-PAIR CAT-6 UTP CABLE. MOUNT UP TO 3 RJ45 OUTLETS PER MULTI-GANG FACEPLATE WITH SEPARATE PERMANENT LABELLING FOR EACH OUTLET. MOUNT AT 300 AFFL U.N.O.	GENERAL WHITE UNLESS NOTED AS BLACK (BK). WORKSHOP ALL BLACK	CLIPSAL C2000 SERIES KRONE JACK C/W SHUTTER	E



ELECTRICAL DESIGN GROUP

ELECTRICAL BUILDING SERVICES CONSULTANTS

P.O. Box 15, SHERWOOD Q. 4075

Phone: (07) 3278 4375 Fax: (07) 3716 0222

Web Site: www.edg.net.au Email: brisbane@edg.net.au

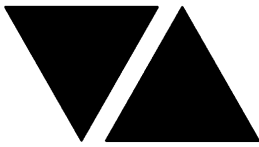
C3227a - TOOWONG KIA & MITSUBISHI

C3227a-0002(G).xls

ELECTRICAL EQUIPMENT SCHEDULE

REVISION G - 30 SEPTEMBER 2025

THE EQUIPMENT SUPPLIER CONTACT DETAILS MAY BE AVAILABLE ON THE EDG WEBSITE VIA THE FOLLOWING LINK www.edg.net.au/links.html					
TYPE	LAMPS	DESCRIPTION	COLOUR / ACCESSORY	CATALOGUE No	REV
WEATHERPROOF COMMUNICATIONS OUTLET (WP)		COMMUNICATIONS OUTLET AS PER THE COMMUNICATIONS OUTLET DESCRIPTION, MOUNTED WITHIN A WEATHERPROOF ENCLOSURE.	WHITE	CLIPSAL 255 SERIES	B
DB-A		REPLACE THE EXISTING DISTRIBUTION BOARD DB-A REFER TO THE NOTES AND DISTRIBUTION BOARD DB-A SCHEDULE FOR ADDITIONAL INFORMATION AND REQUIREMENTS. PROVIDE A SHOP DRAWING OF THE DB FOR APPROVAL. REMOVE ALL EXISTING CIRCUITS AND CABLING MADE REDUNDANT BY THE WORKS. REMOVE THE SWITCH AND SUBMAIN THAT PASSES THROUGH THE EXISTING DB-A TO DB-2			A
DB-K		NEW DISTRIBUTION BOARD DB-K REFER TO THE NOTES AND DISTRIBUTION BOARD DB-A SCHEDULE FOR ADDITIONAL INFORMATION AND REQUIREMENTS. PROVIDE A SHOP DRAWING OF THE DB FOR APPROVAL.			A
DB-1		NEW DISTRIBUTION BOARD DB-1 TO REPLACE ALL OF THE EXISTING MSB CIRCUITS. REMOVE ALL EXISTING CIRCUITS AND CABLING MADE REDUNDANT BY THE WORKS. RECONNECT ALL OF THE EXISTING CIRCUITS THAT REMAIN WITH NEW AS3000 COMPLIANT SWITCHGEAR THAT MATCHES THE EXISTING IN CAPACITY AND FUNCTION. REFER TO THE NOTES FOR ADDITIONAL INFORMATION AND REQUIREMENTS. PROVIDE A SHOP DRAWING OF THE DB FOR APPROVAL.			A
DB-1 - P1 CIRCUIT		PROVIDE CIRCUIT DB-1 - P1 AS A SINGLE PHASE 20 AMP RCDO PROTECTED 2.5MM CIRCUIT SUPPLIED FROM DB-1			E
DB-2		EXISTING DISTRIBUTION BOARD DB-K TO REMAIN AS IS AND BE PROVIDED WITH A NEW SUPPLY FROM THE NEW MSB AS PER THE SCHEMATIC.			A
MSB		REPLACE THE EXISTING MSB WITH A NEW FLOOR MOUNTED MAIN SWITCHBOARD SECURED TO THE WALL. REFER TO THE SCHEMATIC AND NOTES FOR ADDITIONAL INFORMATION AND REQUIREMENTS. PROVIDE A SHOP DRAWING OF THE MSB FOR APPROVAL.			A
METER (M)		UPGRADE THE EXISTING ENERGEX REVENUE METER INTO THE NEW MSB.			A
MSSB		SHOWROOM MECHANICAL SERVICES SWITCHBOARD PROVIDED BY THE MECHANICAL SUB CONTRACTOR. COORDINATE THE SUBMAIN CONNECTION WITH THE MECHANICAL SUB CONTRACTOR ON SITE.			B
MSSB-WS		WORKSHOP MECHANICAL SERVICES SWITCHBOARD PROVIDED BY THE MECHANICAL SUB CONTRACTOR. COORDINATE THE SUBMAIN CONNECTION WITH THE MECHANICAL SUB CONTRACTOR ON SITE.			B
FLOOR BOX (FB1)		INSITU FLUSH FLOOR BOX C/W A DOUBLE GPOS+ 2 COMMUNICATIONS OUTLETS ON THE SAME FACEPLATE. PROVIDE A 32 DIA CONDUIT C/W A SPARE DRAW WIRE FROM THE REAR OF THE COMMUNICATIONS FACEPLATE TO THE CEILING SPACE ABOVE THE COMMUNICATIONS RACK CR-A. PROVIDE THE GPOS AND COMMUNICATIONS OUTLETS AS PER THE STANDARD DESCRIPTIONS.	STAINLESS STEEL	ECD FB2SHD	B
SIGN CONNECTION		COORDINATE THE LOCATION AND CONNECTION WITH THE SIGN CONTRACTOR ENSURING THE GPO / ISOLATORS ARE PROVIDED WITH APPROPRIATE WEATHER PROTECTION AND ARE CONCEALED FROM VIEW.			B



ELECTRICAL DESIGN GROUP

ELECTRICAL BUILDING SERVICES CONSULTANTS

P.O. Box 15, SHERWOOD Q. 4075

Phone: (07) 3278 4375 Fax: (07) 3716 0222

Web Site: www.edg.net.au Email: brisbane@edg.net.au

C3227a - TOOWONG KIA & MITSUBISHI

C3227a-0002(G).xls

ELECTRICAL EQUIPMENT SCHEDULE

REVISION G - 30 SEPTEMBER 2025

THE EQUIPMENT SUPPLIER CONTACT DETAILS MAY BE AVAILABLE ON THE EDG WEBSITE VIA THE FOLLOWING LINK www.edg.net.au/links.html					
TYPE	LAMPS	DESCRIPTION	COLOUR / ACCESSORY	CATALOGUE No	REV
COMMUNICATIONS RACK CR-A		EXISTING COMMUNICATIONS RACK TO BE UPGRADED AS NECESSARY AND PROVIDED WITH ADDITIONAL PATCH PANELS TO ACCOMMODATE THE ADDITIONAL COMMUNICATIONS OUTLETS. REMOVE ALL REDUNDANT CABLING AND UPDATE THE PORT NUMBERING.			A



ELECTRICAL DESIGN GROUP

ELECTRICAL BUILDING SERVICES CONSULTANTS

P.O. Box 15, SHERWOOD Q. 4075

Phone: (07) 3278 4375 Fax: (07) 3716 0222

Web Site: www.edg.net.au Email: brisbane@edg.net.au

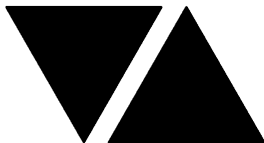
C3227a - TOOWONG KIA & MITSUBISHI

C3227a-0004(H).xls

DISTRIBUTION BOARD DB-A

REVISION H - 30 SEPTEMBER 2025

<div> <div>FAULT CURRENT: 6KA</div> <div>CHASSIS SIZE: 2 X 72 POLES</div> <div>CHASSIS RATING: 250A</div> <div>PHASES: 3</div> </div> <div> <div>MAIN SWITCH: 160A LOAD BREAK NON AUTO</div> <div>SUPPLIED FROM: MSB</div> <div>CABLE: 4C 70</div> </div>							REV
							A
							A
							A
PROVIDE THE DB WITH A 600 WIDE EMPTY DIN RAIL TO ACCOMMODATE FUTURE CONTACTORS AND CONTROLS IN ADDITION TO THE INITIAL CONTROLS . PROVIDE THE DB WITH AN AS2293 EMERGENCY LIGHTING CONTROL SYSTEM TO CONTROL THE ASSOCIATED EMERGENCY LIGHTS. RECONNECT THE EXISTING DB-A CIRCUITS THAT REMAIN WITH NEW AS3000 COMPLIANT SWITCHGEAR THAT MATCHES THE EXISTING CAPACITY AND FUNCTION. UPDATE THE SCHEDULE WITH THE CIRCUIT USE AND LOCATION AT PRACTICAL COMPLETION							A
CIRC	PH	CIRCUIT BREAKER (amps)	CONTROL EQUIPMENT	CABLE SIZE (mm2)	LOCATION	CIRCUIT USE	
P1							D
P2	1	20	RCBO PLUS CIS SHUNT TRIP	2.5	mitsubishi	CLEANING	H
P3	1	20	RCBO	2.5	mitsubishi	RECEPTION	A
P4	1	20	RCBO	2.5	mitsubishi	HAND DRYER	A
P5	1	20	RCBO PLUS CIS SHUNT TRIP	2.5	mitsubishi	FLOOR BOXES	H
P6	1	20	RCBO PLUS CIS SHUNT TRIP	2.5	mitsubishi	FLOOR BOXES	H
P7	1	20	RCBO D CURVE	2.5	mitsubishi	AV WALL	D
P8	1	20	RCBO	2.5	KIA	CLEANING	A
P9	1	20	RCBO	2.5	KIA	OFFICES	A
P10	1	20	RCBO	2.5	KIA	CLEANING	A
P11	1	20	RCBO	2.5	KIA	TV	A
P12	1	20	RCBO PLUS CIS SHUNT TRIP	2.5	KIA	FLOOR BOXES	H
P13	1	20	RCBO PLUS CIS SHUNT TRIP	2.5	KIA	FLOOR BOXES	H
P14	1	20	RCBO PLUS CIS SHUNT TRIP	2.5	KIA	FLOOR BOXES	H
P15	1	20	RCBO	2.5	KIA	TV	A
P16	1	20	RCBO	2.5	KIA	HAND DRYER	A
P17	1	20	RCBO	2.5	mitsubishi	TV	A
P18	1	20	RCBO	2.5	mitsubishi	KITCHEN	A
P19	1	20	RCBO	2.5	mitsubishi	DISHWASHER	A
P20	1	20	RCBO	2.5	mitsubishi	REFRIGERATOR	A
P21	1	20	RCBO	2.5	mitsubishi	BILLI	F
P22	1	20	RCBO	2.5	KIA	REFRIGERATOR	A
P23	1	20	RCBO	2.5	KIA	DISHWASHER	A
P24	1	20	RCBO	2.5	KIA	KITCHEN	A
P25	1	20	RCBO	2.5	KIA	BILLI	F
P26	3	32	RCBO	6.0	AMENITIES	HWS	G
P27							B
P28	1	20	RCBO	2.5	KIA	SALES	A
P29	1	20	RCBO D CURVE	2.5	mitsubishi	AV WALL	D
P30	1	20	RCBO	2.5	mitsubishi	INTERACTIVE STATION	D
P31							D
P32	TBA	TBA	CIS SHUNT TRIP	TBA	EXTERNAL	EV CHARGER EV1	H
P33	TBA	TBA	CIS SHUNT TRIP	TBA	EXTERNAL	EV CHARGER EV1	H



ELECTRICAL DESIGN GROUP

ELECTRICAL BUILDING SERVICES CONSULTANTS

P.O. Box 15, SHERWOOD Q. 4075

Phone: (07) 3278 4375 Fax: (07) 3716 0222

Web Site: www.edg.net.au Email: brisbane@edg.net.au

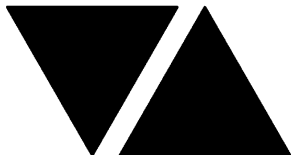
C3227a - TOOWONG KIA & MITSUBISHI

C3227a-0004(H).xls

DISTRIBUTION BOARD DB-A

REVISION H - 30 SEPTEMBER 2025

FAULT CURRENT: 6KA							REV
MAIN SWITCH: 160A LOAD BREAK NON AUTO							A
CHASSIS SIZE: 2 X 72 POLES							A
SUPPLIED FROM: MSB							A
CHASSIS RATING: 250A							A
CABLE: 4C 70							A
PHASES: 3							A
PROVIDE THE DB WITH A 600 WIDE EMPTY DIN RAIL TO ACCOMMODATE FUTURE CONTACTORS AND CONTROLS IN ADDITION TO THE INITIAL CONTROLS. PROVIDE THE DB WITH AN AS2293 EMERGENCY LIGHTING CONTROL SYSTEM TO CONTROL THE ASSOCIATED EMERGENCY LIGHTS. RECONNECT THE EXISTING DB-A CIRCUITS THAT REMAIN WITH NEW AS3000 COMPLIANT SWITCHGEAR THAT MATCHES THE EXISTING CAPACITY AND FUNCTION. UPDATE THE SCHEDULE WITH THE CIRCUIT USE AND LOCATION AT PRACTICAL COMPLETION							A
CIRC	PH	CIRCUIT BREAKER (amps)	CONTROL EQUIPMENT	CABLE SIZE (mm2)	LOCATION	CIRCUIT USE	
L1	1	20	RCBO PE ON DUSK OFF DAWN	2.5	EXTERNAL	SIGNS	A
L2	1	20	RCBO PE ON DUSK OFF DAWN	2.5	EXTERNAL	SIGNS	A
L3							E
L4							E
L5	1	20	RCBO	2.5	BOH	LIGHTS	A
L6	1	20	RCBO	2.5	BOH	LIGHTS	A
L7	1	20	RCBO	2.5	mitsubishi	LIGHTS	A
L8	1	20	RCBO	2.5	mitsubishi	LIGHTS	A
L9	1	20	RCBO	2.5	mitsubishi	LIGHTS	A
L10	1	20	RCBO	2.5	KIA	LIGHTS	A
L11	1	20	RCBO	2.5	KIA	LIGHTS	A
L12	1	20	RCBO	2.5	KIA	LIGHTS	A
L13	1	20	RCBO	2.5	KIA	DISPLAY	A
L14	1	20	RCBO	2.5	KIA	LIGHTS	A
L15	1	20	RCBO	2.5	KIA	LIGHTS	A
L16	1	20	RCBO	2.5	mitsubishi	LIGHTS	A
L17	1	20	RCBO	2.5	mitsubishi	LIGHTS	A
L18	1	20	RCBO	2.5	mitsubishi	LIGHTS	A
L19	1	20	RCBO	2.5	mitsubishi	HERO	D



ELECTRICAL DESIGN GROUP

ELECTRICAL BUILDING SERVICES CONSULTANTS

P.O. Box 15, SHERWOOD Q. 4075

Phone: (07) 3278 4375 Fax: (07) 3716 0222

Web Site: www.edg.net.au Email: brisbane@edg.net.au

C3227a - TOOWONG KIA & MITSUBISHI

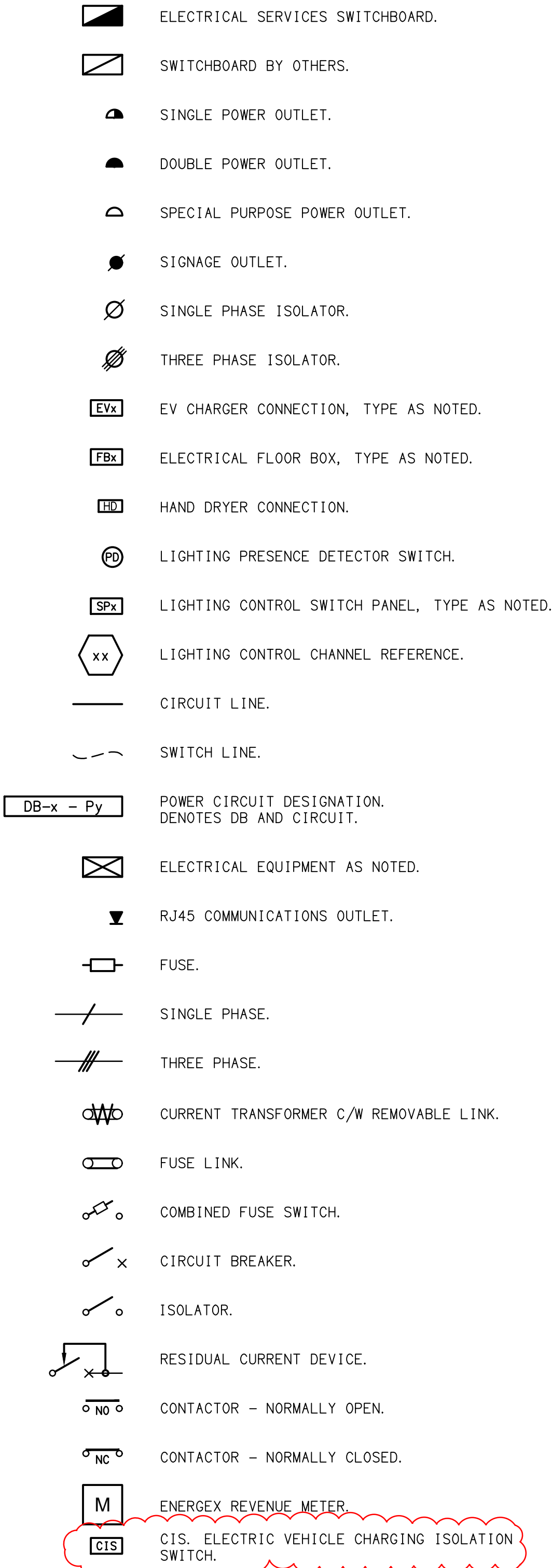
C3227a-0005(D).xls

DISTRIBUTION BOARD DB-K

REVISION D - 06 AUGUST 2025

							REV
FAULT CURRENT:		6KA		MAIN SWITCH:		160A LOAD BREAK NON AUTO	A
CHASSIS SIZE:		72 POLES		SUPPLIED FROM:			A
CHASSIS RATING:		250A		CABLE:			A
PHASES:		3					A
PROVIDE THE DB WITH A 600 WIDE EMPTY DIN RAIL TO ACCOMMODATE FUTURE CONTACTORS AND CONTROLS IN ADDITION TO THE INITIAL CONTROLS . PROVIDE THE DB WITH AN AS2293 EMERGENCY LIGHTING CONTROL SYSTEM TO CONTROL THE ASSOCIATED EMERGENCY LIGHTS.							A
CIRC	PH	CIRCUIT BREAKER (amps)	CONTROL EQUIPMENT	CABLE SIZE (mm2)	LOCATION	CIRCUIT USE	
P1	3	20	RCBO	2.5	WORKSHOP	HOIST	A
P2	3	20	RCBO	2.5	WORKSHOP	HOIST	A
P3	3	20	RCBO	2.5	WORKSHOP	HOIST	A
P4	1	20	RCBO	2.5	WORKSHOP	20A OUTLET	A
P5	3	20	RCBO	2.5	WORKSHOP	3PH OUTLET	A
P6	1	20	RCBO	2.5	WORKSHOP	BENCHES	A
P7	1	20	RCBO	2.5	WORKSHOP	20A OUTLET	A
P8	1	20	RCBO	2.5	WORKSHOP	BENCHES	A
P9	3	20	RCBO	2.5	WORKSHOP	3PH OUTLET	A
P10	1	20	RCBO	2.5	WORKSHOP	20A OUTLET	A
P11	3	50		10.0	WORKSHOP	50A ISOLATOR	D
P12							B
P13							B
P14	1	20	RCBO	2.5	WORKSHOP	OFFICE	A
P15	3	20	RCBO	2.5	WORKSHOP	RSD	A
P16	3	40	RCBO	6.0	WORKSHOP	MSSB-WS	A
P17	1	20	RCBO	2.5	WORKSHOP	WHEEL BALANCER	C
P18	3	20	RCBO	2.5	WORKSHOP	3PH OUTLET	C
L1	1	20	RCBO	2.5	RECEPTION	LIGHTS	A
L2	1	20	RCBO	2.5		LIGHTS	A
L3	1	20	RCBO	2.5	OFFICE	LIGHTS	A
L4	1	20	RCBO	2.5	WORKSHOP	LIGHTS	A
L5	1	20	RCBO PE ON DUSK TC OFF	2.5	WORKSHOP	LIGHTS	A
L6	1	20	RCBO	2.5	PARTS	LIGHTS	A

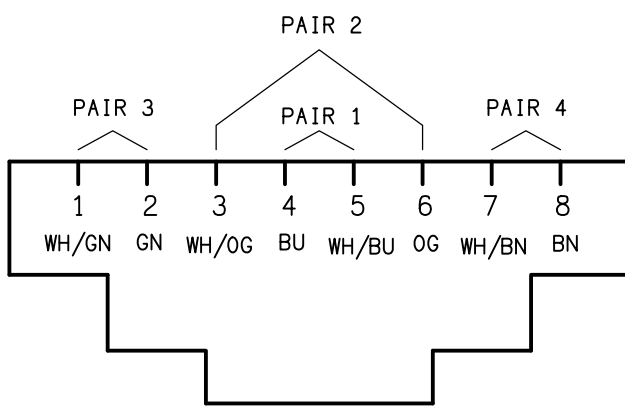
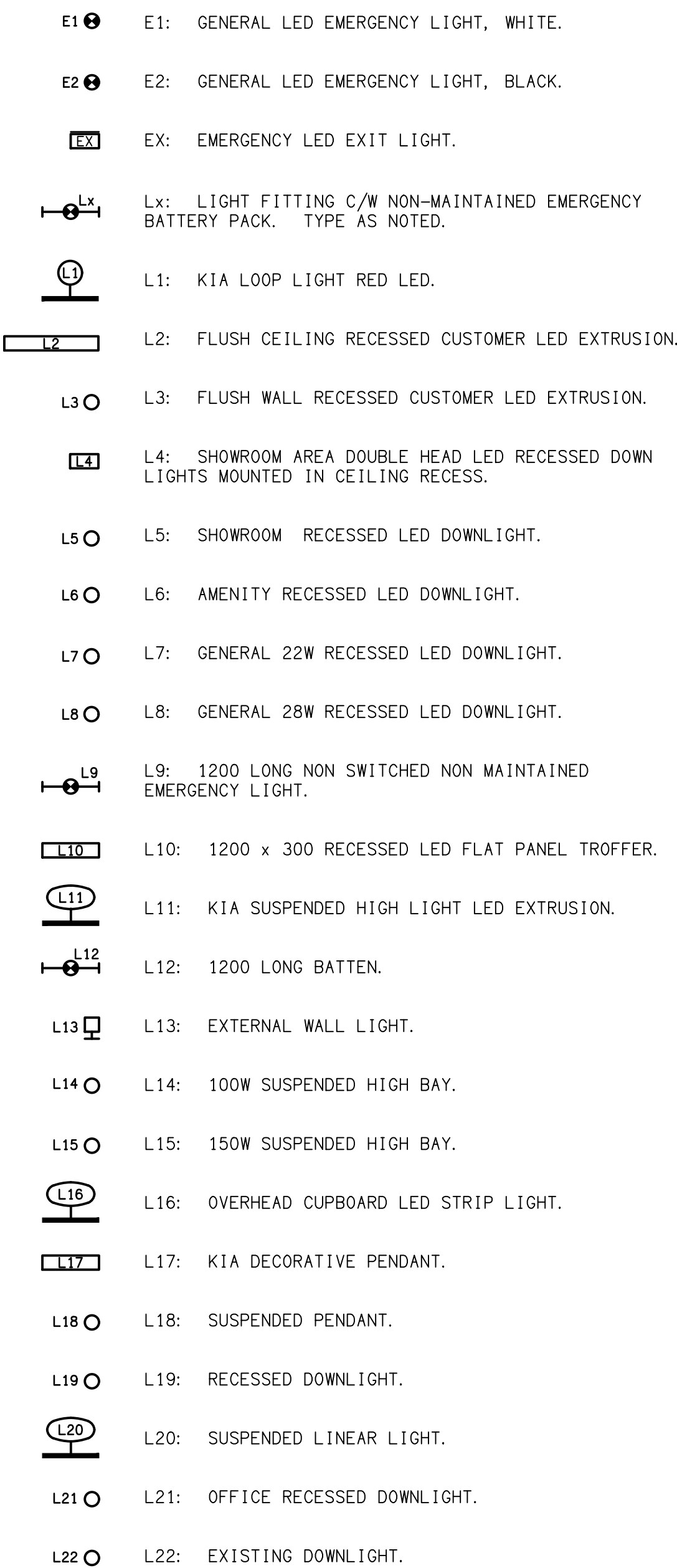
LEGEND



NOTE

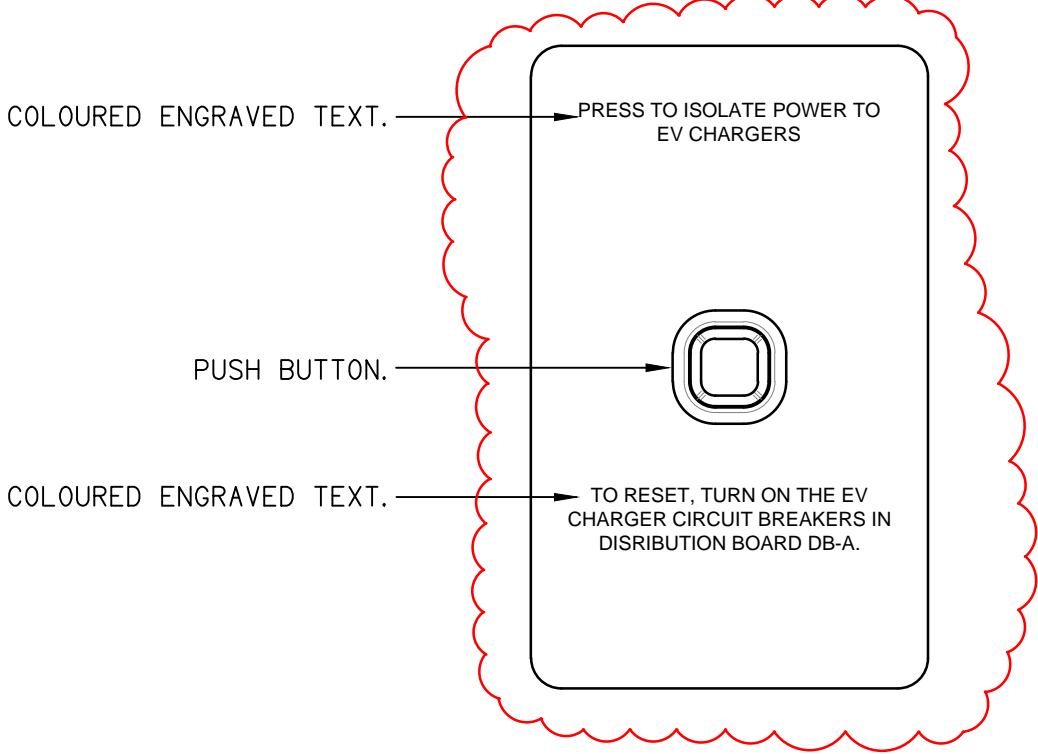
ALL ELECTRICAL PENETRATIONS THROUGH THE ROOF SHEETING ARE TO BE IN LINE WITH THE STRUCTURAL OR MECHANICAL SERVICES PENETRATIONS TO AVOID DEDICATED FLASHINGS FOR THE ELECTRICAL SERVICES.

LEGEND



SCHEMATIC

RJ45 PINOUT CONFIGURATION
NOT TO SCALE



DETAIL

ELECTRIC VEHICLE CHARGING ISOLATION SWITCH (CIS)
NOT TO SCALE

EQUIPMENT:

TEST – TEST PUSH BUTTON MOUNTED ON THE DISTRIBUTION BOARD ESCUTCHEON.

RESET – RESET PUSH BUTTON MOUNTED ON THE DISTRIBUTION BOARD ESCUTCHEON.

LAMP – AMBER TEST INDICATING LAMP MOUNTED ON THE DISTRIBUTION BOARD ESCUTCHEON.

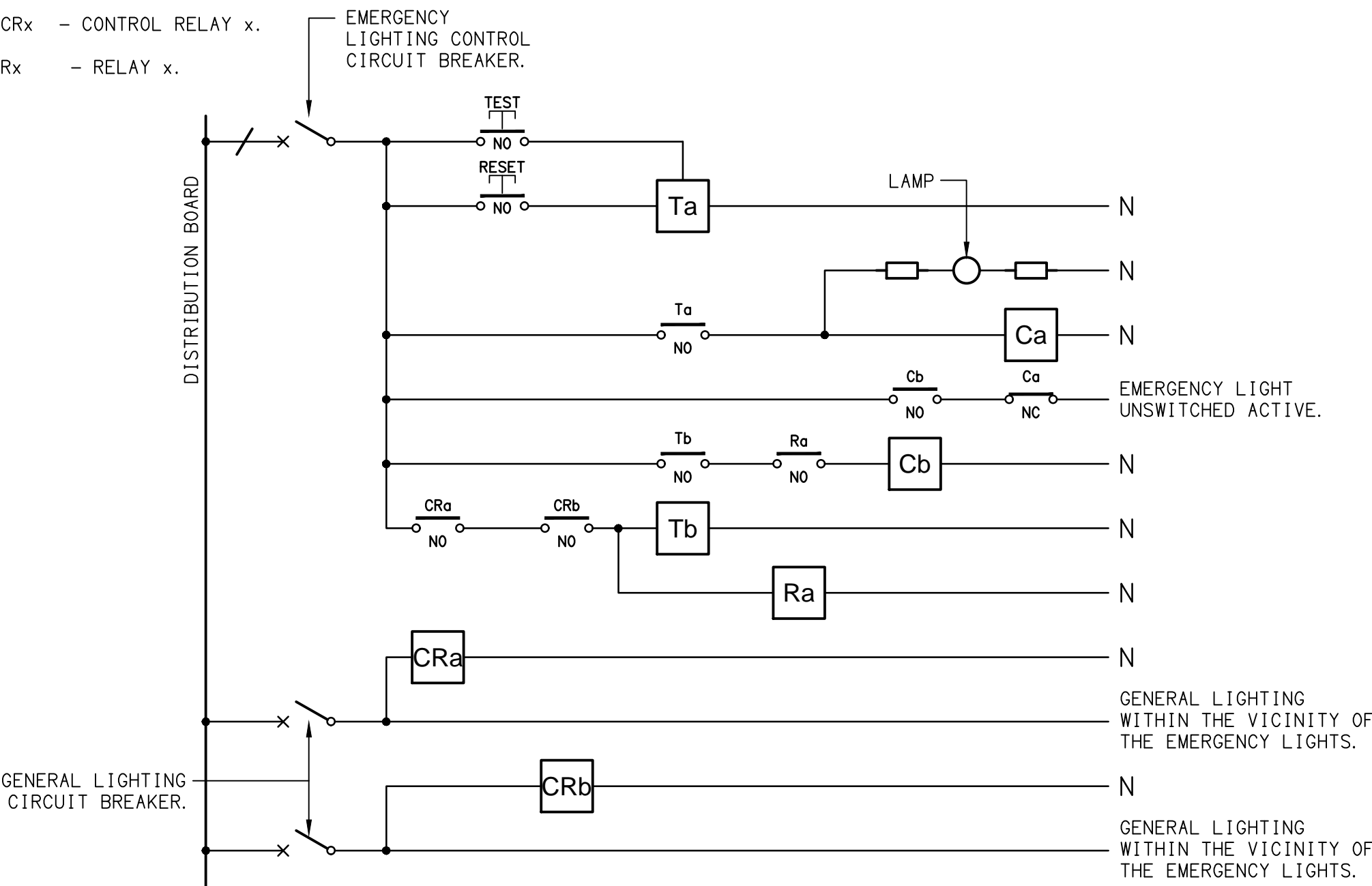
Ta – ADJUSTABLE 0–3 HOUR TIMED RELAY.

Tb – 15 MINUTE RUN-ON TIMER TO OPERATE UPON THE RETURN OF MAINS POWER.

Cx – CONTACTOR x.

CRx – CONTROL RELAY x.

Rx – RELAY x.



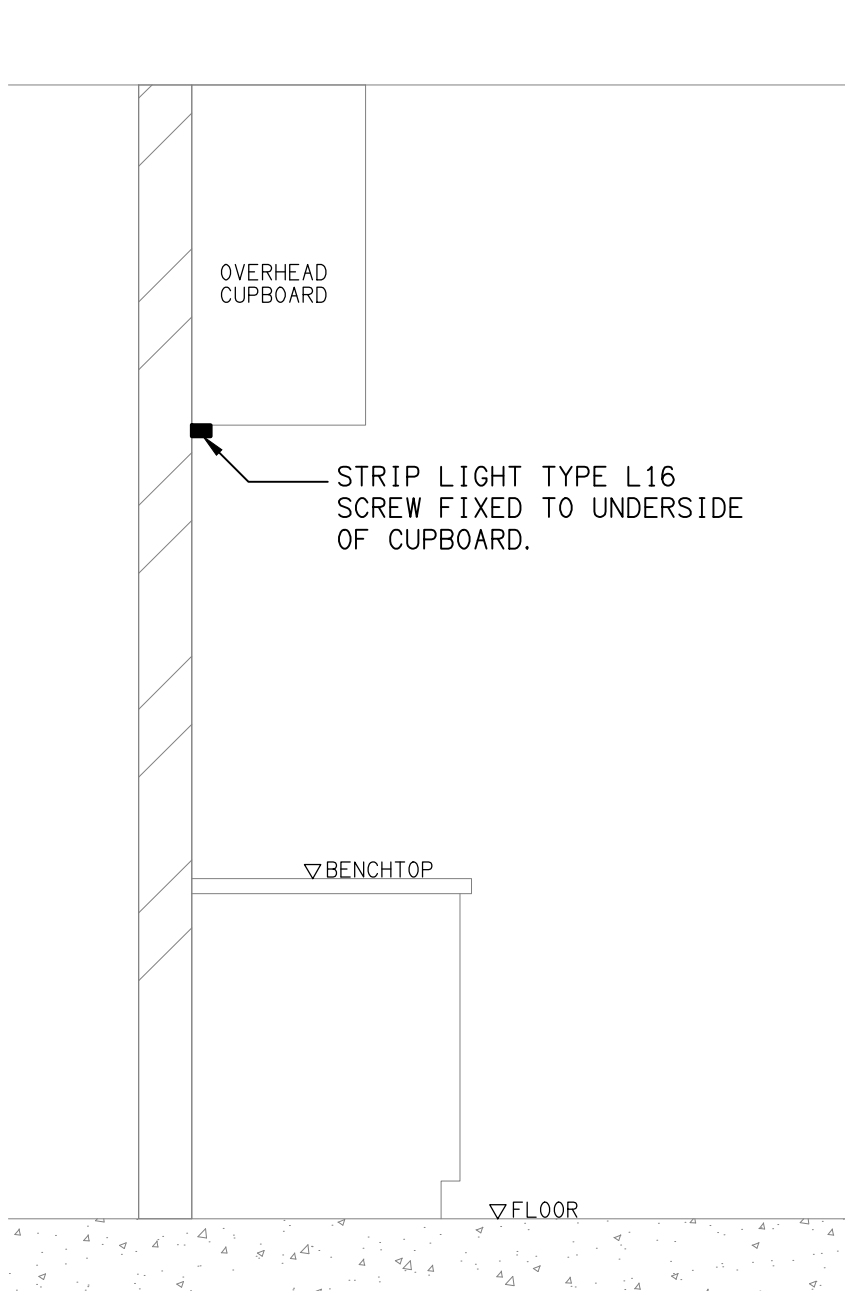
NOTES

1. THE EMERGENCY LIGHT UNSWITCHED ACTIVE / GENERAL LIGHTING SWITCHED ACTIVE CIRCUIT ARRANGEMENT AND CONTROL IS TYPICAL FOR ALL CIRCUITS SUPPLYING EMERGENCY LIGHTS.

2. PROVIDE ADDITIONAL CONTROL RELAYS (CRx) CONFIGURED AS PER CRa AND CRb FOR ALL ADDITIONAL LIGHTING CIRCUITS THAT SUPPLY LIGHTS IN THE VICINITY OF THE EMERGENCY LIGHTS.

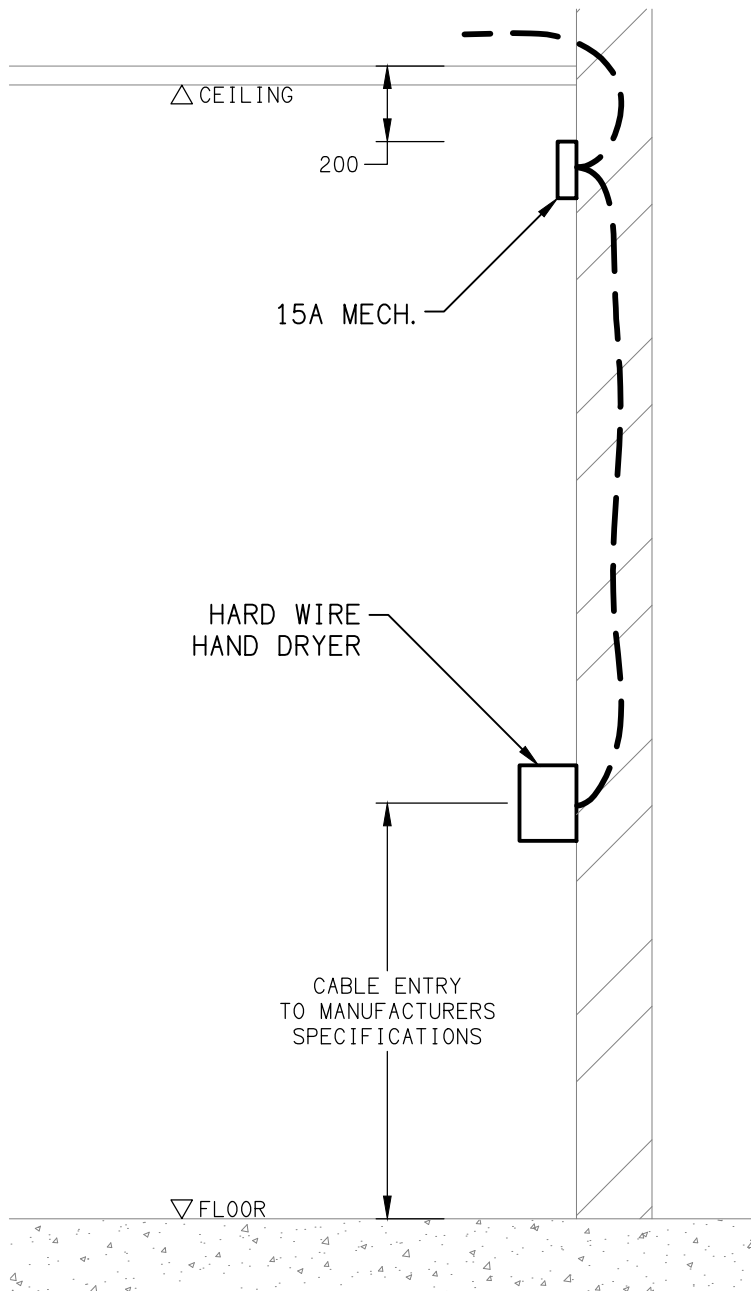
SCHEMATIC

EMERGENCY LIGHTING
NOT TO SCALE



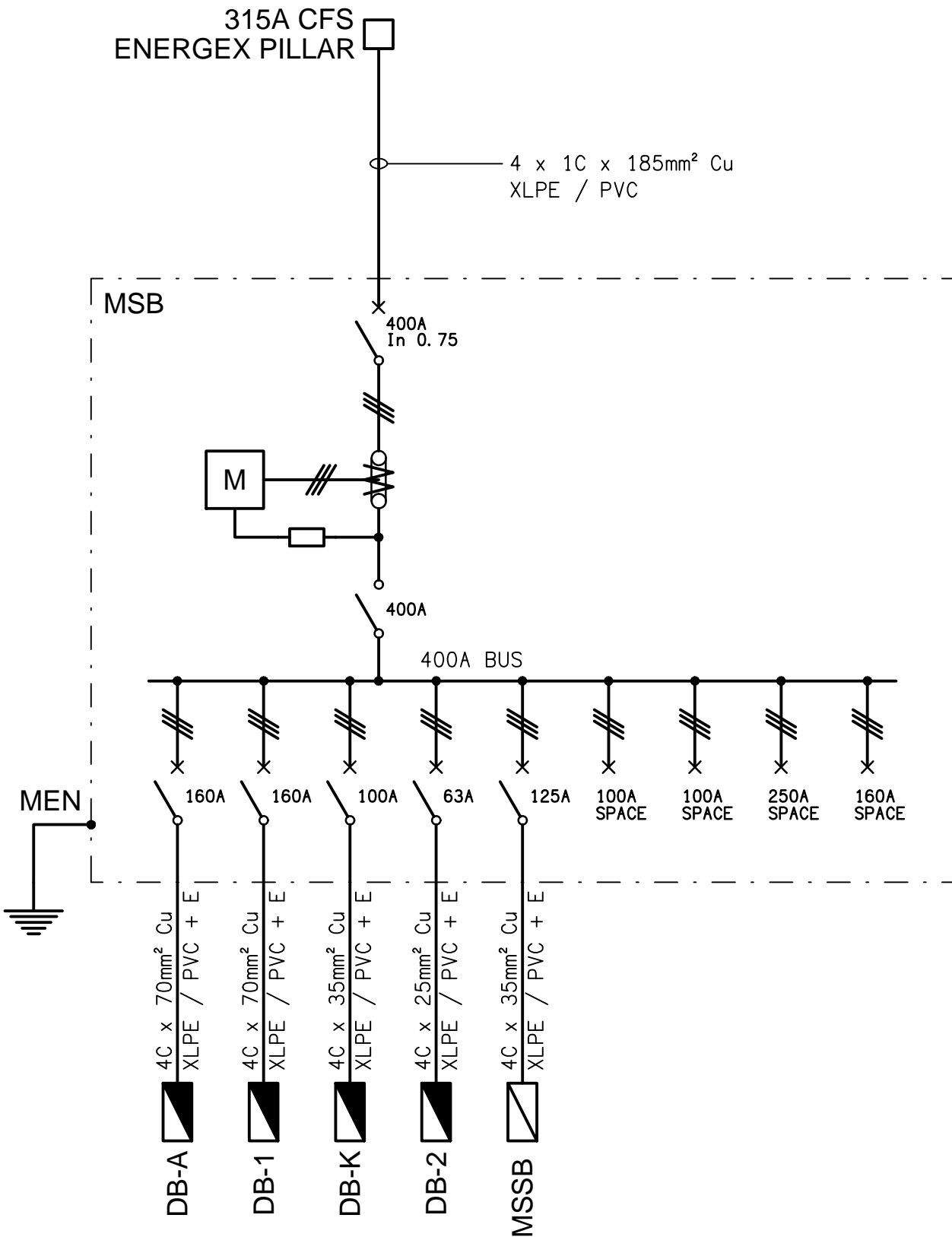
DETAIL

"L16" TYPE STRIP LIGHT MOUNTING
NOT TO SCALE



DETAIL

HAND DRYER CONNECTION
NOT TO SCALE



SCHEMATIC

POWER CONFIGURATION
NOT TO SCALE

ELECTRICAL DESIGN GROUP BRISBANE
PTY LTD
ACN 092 710 793

TRADING AS:
ELECTRICAL DESIGN GROUP

THE COPYRIGHT OF THIS DRAWING
REMAINS THE PROPERTY OF THE
ELECTRICAL DESIGN GROUP.

USE FIGURED DIMENSIONS
IN PREFERENCE TO SCALE.

ALL DIMENSIONS TO BE
VERIFIED ONSITE.



ELECTRICAL DESIGN GROUP

ELECTRICAL BUILDING SERVICES CONSULTANTS
BRISBANE GOLD COAST

P.O.Box 15, Sherwood Q.4075
Phone: (07) 3278 4375
Email: brisbane@edg.net.au
Web: www.edg.net.au

PROJECT:

TOOWONG KIA & MITSUBISHI

601 MILTON ROAD, TOOWONG

J	CONSTRUCTION	30/09/2025
REV:	DESCRIPTION:	DATE:

DRAWING:
**ELECTRICAL SERVICES
LEGEND, SCHEMATICS & DETAILS**

SCALE:
NOT TO SCALE AT A1

PROJECT NO:
C3227a

DRAWING NO:
E01

REVISION:
J

NOTES

1. EXTENT OF WORKS

THE ELECTRICAL SERVICES SUB-CONTRACT INCLUDES BUT IS NOT LIMITED TO THE FOLLOWING:

- SURVEY OF ALL EXISTING UNDERGROUND SERVICES IN THE VICINITY OF THE WORKS.
- SUPPLY AND INSTALLATION OF ALL COMPONENTS FORMING PART OF THE ELECTRICAL SERVICES.
- CO-ORDINATION.
- INSPECTIONS.
- TESTING AND COMMISSIONING.
- MAINTENANCE.
- AS BUILT DRAWINGS.
- MAINTENANCE MANUAL.
- CABLING, CABLE SUPPORT SYSTEMS AND ACCESS.
- POWER DISTRIBUTION.
- LIGHTING.
- COMMUNICATIONS CABLING.
- MODIFICATION, RELOCATION AND EXTENSION AS NECESSARY OF ALL EXISTING SERVICES THAT ARE IMPACTED BY THE WORKS OR REQUIRED TO BE EXTENDED BY THE WORKS.
- REMOVAL OF ALL EXISTING SERVICES MADE REDUNDANT BY THE WORKS.
- ANY TEMPORARY WORKS REQUIRED TO KEEP THE SITE OPERATING DURING THE CONSTRUCTION PROCESS.
- ALL MINOR COMPONENTS AND INCIDENTAL WORKS NOT SPECIFICALLY REFERRED TO, HOWEVER NECESSARY TO COMPLETE THE ELECTRICAL SERVICES INSTALLATION SUCH THAT IT IS HANDED OVER COMPLETE, OPERATIONAL AND FIT FOR THE INTENDED USE.

SUPPLY ALL LABOUR, MATERIALS, EQUIPMENT, AND ALL OTHER ITEMS, WHETHER MENTIONED IN DETAIL OR NOT, REQUIRED FOR THE SATISFACTORY COMPLETION OF THE ELECTRICAL SERVICES INSTALLATION, LEAVING IN FULL WORKING ORDER TO THE SATISFACTION OF THE PROJECT MANAGER.

PRIOR TO COMMENCING WORK CONSULT THE SITES MANAGEMENT FOR ANY HAZARDOUS MATERIAL AND OR ASBESTOS REGISTERS AS WELL AS UNDERTAKE A THOROUGH INSPECTION OF THE SITE TO IDENTIFY ANY POTENTIAL HAZARDOUS MATERIALS, ASBESTOS AND HEALTH OR SAFETY RISKS. ADVISE THE CONTRACTOR OF ANY POTENTIAL HAZARDOUS MATERIALS, ASBESTOS AND HEALTH OR SAFETY RISKS IF IDENTIFIED AND DO NOT COMMENCE WORK UNTIL AN APPROPRIATE MANAGEMENT PLAN HAS BEEN DEVELOPED AND AGREED TO BY ALL PARTIES

PRIOR TO COMMENCING WORK UNDERTAKE A DETAILED ACTIVE SURVEY OF ALL EXISTING UNDERGROUND SERVICES IN THE VICINITY OF THE WORKS. IDENTIFY ALL EXISTING UNDERGROUND SERVICES WITHIN THE SCOPE OF THE WORKS. THE SURVEY WILL NEED TO INCLUDE VACUUM EXCAVATION. PROVIDE A COPY OF THE SURVEY FOR APPROVAL INCLUDING ALL PITS AND CONDUITS DIMENSIONED OFF EXISTING BUILDINGS, THE CONTENTS OF THE CONDUITS INCLUDING THE CABLE TYPE SOURCE AND DESTINATION.

SUPPLY ALL LABOUR, MATERIALS, EQUIPMENT, AND ALL OTHER ITEMS, WHETHER MENTIONED IN DETAIL OR NOT, REQUIRED FOR THE SATISFACTORY COMPLETION OF THE ELECTRICAL SERVICES INSTALLATION, LEAVING IN FULL WORKING ORDER TO THE SATISFACTION OF THE PROJECT MANAGER.

ACCEPT FULL RESPONSIBILITY FOR LIASING, ARRANGING AND CO-ORDINATION OF ALL WORKS THAT HAVE AN EFFECT ON OR WILL BE AFFECTED BY THE ELECTRICAL SERVICES.

CONFIRM THE POSITION OF ALL OUTLETS ON SITE WITH THE OPERATOR PRIOR TO ROUGH-IN.

ANY INTERRUPTION TO ANY ELECTRICAL SERVICES OUTSIDE OF THE AREA OF WORKS MUST BE RESTRICTED TO OUTSIDE OF THE FACILITIES OPERATING HOURS AND MUST BE ADVISED TO THE OPERATOR IN WRITING TWO WEEKS PRIOR AND LIMITED TO FOUR HOURS.

2. WORKMANSHIP

ENSURE THAT THE ELECTRICAL WORK IS PERFORMED BY THE HOLDER OF A CURRENT ELECTRICAL SUB CONTRACTOR LICENSE AND THE SERVICES COVERED BY THE ACMA IS PERFORMED BY THE HOLDER OF THE APPROPRIATE CURRENT ACMA LICENSE. ENSURE THE INSTALLATION AND ALL COMPONENTS, FITTINGS, FITTINGS, OUTLETS AND CABLES ARE SUPPLIED AND INSTALLED TO A HIGH STANDARD THROUGHOUT, AND INSTALLED IN A NEAT AND TRADESMAN LIKE MANNER, TO THE CURRENT INDUSTRY STANDARDS. ENSURE ALL MATERIALS AND COMPONENTS OF A SIMILAR TYPE ARE OF THE SAME MANUFACTURER AND INSTALLED IN A UNIFORM MANNER.

IT IS THE ELECTRICAL SUB CONTRACTOR’S RESPONSIBILITY TO ENSURE THAT THE INSTALLATION IS FIT FOR PURPOSE AND IS PROVIDED AS A COMPLETE WORKING INSTALLATION. IT IS THE ELECTRICAL SUB CONTRACTOR’S RESPONSIBILITY TO PROVIDE ALL COMPONENTS, FITTINGS, FIXTURES, SYSTEMS, PROGRAMMING ETC IRRESPECTIVE OF THE LEVEL DETAILED IN THE DOCUMENTS SUCH THAT THE INSTALLATION IS PROVIDED AS A COMPLETE WORKING INSTALLATION.

CONCEAL ALL WIRING AND CONDUITS. EXPOSED CABLING OR CONDUITS ARE GENERALLY NOT ACCEPTABLE. IT IS NOTED THAT CHASING AND REINSTATEMENT WILL BE REQUIRED. ENSURE ALL COMPONENTS, EQUIPMENT AND MATERIALS SUPPLIED ARE NEW, UNUSED, DESIGNED AND SELECTED TO ENSURE SATISFACTORY OPERATION UNDER VARYING ATMOSPHERIC, CLIMATIC, HUMID TROPICAL CONDITIONS WITHOUT DISTORTION AND DETERIORATION IN ANY PART AFFECTING EFFICIENCY AND RELIABILITY OF THE SYSTEMS. DESIGN AND SELECT ALL EQUIPMENT TO PROVIDE THE NECESSARY SAFETY TO HUMAN LIFE AND PROPERTY DURING OPERATION AND MAINTENANCE WITH PARTICULAR ATTENTION GIVEN TO ELECTRICAL SAFETY AND SEGREGATION PRECAUTIONS.

CHECK THE FINISHED PAINTWORK AROUND THE AREA OF EACH INSTALLATION AND TOUCH UP ALL DAMAGED PARTS AND FINISHES AFTER THE INSTALLATION OF THE ELECTRICAL SERVICES.

ALL WORKS ARE TO BE CARRIED OUT IN ACCORDANCE WITH THE BUILDER’S PROGRAM. ENSURE ALL FINAL LOCATIONS OF OUTLETS AND FITTINGS ARE CO-ORDINATED ONSITE WITH THE ARCHITECT AND ALL OTHER SERVICES, TO THE APPROVAL OF THE PROJECT MANAGER. ALLOW TO CO-ORDINATE THE FINAL LOCATION OF ALL EQUIPMENT, FITTINGS, & OUTLETS, SUCH THAT THEY ARE INSTALLED IN ACCORDANCE WITH THE AS3000 RESTRICTED ZONES, AND ARE NOT COVERED INAPPROPRIATELY.

ENSURE THAT ALL METAL SURFACES ARE SUITABLY PROTECTED AGAINST CORROSION, AND THAT ALL PLASTIC MATERIALS ARE UV STABILISED.

PROVIDE ALL MATERIALS AS NEW, AND OF THE HIGHEST CLASS AVAILABLE FOR THEIR RESPECTIVE TYPES. ENSURE ALL ASPECTS OF THE WORK ARE OF A HIGH STANDARD THROUGHOUT, AND INSTALLED IN A NEAT AND TRADESMAN LIKE MANNER, TO THE CURRENT INDUSTRY STANDARDS.

IRRESPECTIVE OF INFORMATION CONTAINED IN THE ELECTRICAL SERVICES DOCUMENTS OR IN INSTRUCTIONS, IT IS THE ELECTRICAL SUB CONTRACTOR’S RESPONSIBILITY TO ENSURE ALL ELECTRICAL SERVICES WORKS ARE INSTALLED IN ACCORDANCE WITH THE REQUIREMENTS OF THE FOLLOWING. REFER ANY DISCREPANCIES BETWEEN THE REQUIREMENTS OF THE FOLLOWING AND/OR THE ELECTRICAL SERVICES DOCUMENTS AND INSTRUCTIONS TO THE ARCHITECT FOR CLARIFICATION PRIOR TO THE PLACING OF ORDERS, FABRICATION OR INSTALLATION OF THE ITEMS/METHODS IN DISCREPANCY.

- NCC BUILDING CODE OF AUSTRALIA.
- ELECTRICITY ACT.
- ELECTRICAL SAFETY ACT.
- ENERGEX REQUIREMENTS.
- THE QUEENSLAND ELECTRICITY CONNECTION MANUAL V4 (QECM) AND THE NATIONAL ELECTRICITY METERING STANDARDS (NEM).
- AS/NZS3000.
- AS3008.
- LOCAL BRIGADE.
- WORKPLACE HEALTH AND SAFETY ACT.
- TELECOMMUNICATIONS ACT.
- ACMA REQUIREMENTS.

ELECTRICAL DESIGN GROUP BRISBANE PTY LTD ACN 092 710 793	THE COPYRIGHT OF THIS DRAWING REMAINS THE PROPERTY OF THE ELECTRICAL DESIGN GROUP.
TRADING AS: ELECTRICAL DESIGN GROUP	USE FIGURED DIMENSIONS IN PREFERENCE TO SCALE.
	ALL DIMENSIONS TO BE VERIFIED ONSITE.

NOTES

3. AUTHORITIES

ENSURE ALL OF THE ELECTRICAL SERVICES COMPLY WITH THE REQUIREMENTS OF ALL REGULATORY AUTHORITIES HAVING JURISDICTION OVER THE SITE INCLUDING BUT NOT LIMITED TO THE FOLLOWING:

- ACMA.
- LOCAL COUNCIL.
- ENERGEX.
- STATE GOVERNMENT DEPARTMENT OF ENVIRONMENT AND HERITAGE.
- QLD GOVERNMENT, DIVISION OF WORKPLACE, HEALTH AND SAFETY.
- QLD FIRE AND EMERGENCY SERVICES.

4. CABLES

UNLESS OTHERWISE SPECIFIED, INSTALL AND TERMINATE CABLES IN ACCORDANCE WITH THE MANUFACTURERS’ RECOMMENDATIONS. DETERMINE THE FINAL ROUTES TO SUIT THE BUILDING STRUCTURE AND SITE CONDITIONS. UNLESS NOTED OTHERWISE, PROVIDE ALL 240 VOLT POWER AND LIGHTING WIRING AS 2.5mm² TWIN & EARTH STRANDED COPPER CONDUCTORS, PVC INSULATED 0.6/1kV V75 GRADE TO AS3174, PROTECTED BY A 20 AMP CIRCUIT BREAKER. ALL CONDUIT AND FITTINGS TO BE RIGID UPVC TO AS2053, UNLESS NOTED OTHERWISE.

5. POWER DISTRIBUTION

IN ADDITION TO THE WORKS ASSOCIATED WITH THE BUILDINGS THE POWER DISTRIBUTION COMPONENT OF THE ELECTRICAL SERVICES SUB-CONTRACT INCLUDES REPLACING THE EXISTING ENERGEX SUPPLY AND MSB WITH A NEW ENERGEX SUPPLY AND MSB.

ENSURE THE NEW ENERGEX SUPPLY, MSB AND MDB ARE COMPLETE AT LEAST ONE MONTH PRIOR TO PRACTICAL COMPLETION FOR COMMISSIONING. PROVIDE AN UNDERGROUND CONSUMERS MAIN FROM THE ENERGEX 315A CFS PILLAR TO A NEW MAIN SWITCHBOARD.

A NEW DISTRIBUTION BOARD DB-K IS TO BE PROVIDED. A NEW DISTRIBUTION BOARD DB-1 IS TO BE PROVIDED TO SUPPLY THE EXISTING CIRCUITS SUPPLIED FROM THE EXISTING MSB. THE EXISTING DISTRIBUTION BOARD DB-A IS TO BE REPLACED. NEW SUBMAINS ARE TO BE PROVIDED FROM THE NEW MDB TO THE EXISTING DISTRIBUTION BOARD DB-2, THE NEW MSSB, THE NEW DISTRIBUTION BOARDS DB-K AND DB-1 AND THE REPLACED DISTRIBUTION BOARD DB-A. THE POWER DISTRIBUTION COMPONENT OF THE ELECTRICAL SERVICES SUB-CONTRACT INCLUDES THOUGH IS NOT LIMITED TO THE FOLLOWING EXTENT OF WORK:

- ARRANGE THE ENERGEX SUPPLY CONNECTION AND METERING.
- UNDERGROUND CONSUMERS MAINS FROM THE ENERGEX 315A CFS PILLAR TO THE MSB.
- MAIN SWITCHBOARD (MSB).
- SUBMAINS.
- NEW DISTRIBUTION BOARD DB-1 AND DB-K.
- REPLACEMENT OF DISTRIBUTION BOARD DB-A.
- EARTHING.
- CIRCUITS.
- ISOLATORS AND OUTLETS.
- SWITCH PANELS.
- INSTALLATION OF THE HAND DRYERS.
- CABLE ACCESS WAYS.
- TESTING AND COMMISSIONING.
- REMOVAL OF THE EXISTING ENERGEX AERIAL SERVICE, PROPERTY POLE, CONSUMERS MAINS AND MSB.
- REMOVAL OF ALL EXISTING SERVICES MADE REDUNDANT BY THE WORKS.
- THERMOSCAN ALL OF THE SWITCHBOARDS SUPPLIED OR MODIFIED AS PART OF THE WORKS WITHIN THE FIRST WEEK SCHOOL HAS COMMENCED AND SUBMIT THE THERMOSCAN FOR APPROVAL.

REFER TO THE POWER SCHEMATIC DRAWING FOR ADDITIONAL SWITCHBOARD REQUIREMENTS AND CONSTRUCTION NOTES. ENSURE ALL THREE PHASE CIRCUITS ARE PROVIDED WITH CORRECT PHASE ROTATION.

PROVIDE THE NEW MAIN SWITCHBOARD (MSB) AS FOLLOWS:

- PLINTH MOUNTED MECHANICALLY FIXED TO THE WALL.
- NATIONAL ELECTRICITY MARKET (NEM) COMPLIANT RETAIL METERING.
- PROVIDE A COPY OF THE ENERGEX APPROVAL OF THE MSB.
- MANUAL GENERATOR CHANGE OVER FACILITY WITH A MECHANICAL INTERLOCK BETWEEN THE MAINS AND GENERATOR SUPPLY.
- FACILITY TO CONNECT TEMPORARY GENERATOR MAINS OF THE SAME SIZE AS THE CONSUMERS MAINS THROUGH THE MSB PIT TO THE CHANGE OVER FACILITY.
- IP66 FORM 1.
- 316 STAINLESS STEEL OR ALUMINIUM ENCLOSURE, DOORS AND ESCUTCHEONS.
- POWDER COATED LIGHT GREY ENCLOSURE AND DOORS.
- POWDER COATED GLOSS WHITE ESCUTCHEONS.
- INTERNAL TEMPERATURE CONTROLLED ANTI CONDENSATION HEATER IN EACH CUBICAL.
- ENSURE THE MSB IS DESIGNED TO OPERATE IN DIRECT SUNLIGHT WITH AN AMBIENT TEMPERATURE OF 45 DEGREES.
- DOORS ON ALL CUBICLES WITH 3 POINT 92268 KEY LOCKABLE HANDLES OTHER THAN THE METER CUBICAL DOOR WHICH IS TO HAVE AN ENERGEX PADLOCK.
- LIFT OFF HINGES ON ALL DOORS AND ESCUTCHEONS.
- 1/4 TURN LATCHES AND D HANDLES ON ALL ESCUTCHEONS.
- ALL SWITCHGEAR TO BE SCHNEIDER OR NHP/ TERASAKI.
- PROVIDE SHOP DRAWINGS FOR APPROVAL.
- ALL COMPONENTS ARE TO BE LABELLED WITH NON-STICK LABELS.
- ENERGEX PADLOCK ON THE METER CUBICAL.
- TWO ENERGEX PADLOCK KEYS AND TWO 92268 KEYS.

PROVIDE DISTRIBUTION BOARDS DB-1, DB-K AND DB-A AS FOLLOWS:

- WALL MOUNTED.
- IP44 FORM 1.
- LIGHT GREY ENCLOSURE WHITE ESCUTCHEON.
- 3 POINT LOCKABLE HANDLES ON ALL DOORS.
- LIFT OFF HINGES ON ALL DOORS AND ESCUTCHEONS.
- 1/4 TURN LATCHES AND D HANDLES ON ALL ESCUTCHEONS.
- ALL SWITCHGEAR TO BE SCHNEIDER OR NHP/ TERASAKI.
- PROVIDE SHOP DRAWINGS FOR APPROVAL.
- 40% SPARE POLES AT PRACTICAL COMPLETION.
- ALL COMPONENTS ARE TO BE LABELLED WITH NON-STICK LABELS.
- A CIRCUIT BREAKER TO SUPPLY THE KITCHEN REFRIGERATION SWITCHBOARD.
- A CIRCUIT BREAKER TO SUPPLY THE KITCHEN MECHANICAL SERVICES SWITCHBOARD.

ENSURE ALL THREE PHASE CIRCUITS ARE PROVIDED WITH CORRECT PHASE ROTATION.

ENSURE ALL OUTLETS AND ISOLATORS ARE POSITIONED SUCH THAT THEY ARE NOT COVERED BY THE EQUIPMENT.

NOTES

6. LIGHTING

THE LIGHTING COMPONENT OF THE ELECTRICAL SERVICES SUB-CONTRACT INCLUDES ALL OF THE INTERNAL AND EXTERNAL LIGHT FITTINGS, LAMPS AND ACCESSORIES. PROVIDE ALL NECESSARY ACCESSORIES TO FACILITATE THE COMPLETE LIGHTING INSTALLATION. THE LIGHTING COMPONENT OF THE ELECTRICAL SERVICES SUB-CONTRACT INCLUDES THOUGH IT IS NOT LIMITED TO THE FOLLOWING EXTENT OF WORK:

- INTERNAL AND EXTERNAL LIGHTING.
- EMERGENCY AND EXIT LIGHTING.
- EARTHING OF THE LIGHTING INSTALLATION.
- LIGHTING CONTROL.
- LIGHTING SUBCIRCUITS.
- TESTING AND COMMISSIONING.

PROVIDE A SINGLE POINT EMERGENCY LIGHTING SYSTEM THAT COMPLIES WITH THE LATEST ISSUE OF ALL PARTS AS2293 AND THE RELEVANT PARTS OF THE NCC BCA. INSTALL EMERGENCY LIGHT FITTINGS NOMINATED AS MAINTAINED WITH THE LAMP PERMANENTLY ON SUPPLIED VIA AN UNSWITCHED ACTIVE MAINS SUPPLY WHEN THE MAINS SUPPLY IS AVAILABLE. WHEN THE MAINS SUPPLY IS NOT AVAILABLE, THE LAMP IS TO REMAIN ON SUPPLIED BY THE EMERGENCY PACK. SINGLE LAMP MAINTAINED EMERGENCY LIGHTS ARE NOT SWITCHED WITH THE LOCAL GENERAL AREA LIGHTING. (THE LAMP IS ALWAYS ON.)

INSTALL EMERGENCY LIGHT FITTINGS NOMINATED AS NON-MAINTAINED AS FOLLOWS:

- IF THE FITTING IS NOT BEING SWITCHED, THE LAMP IS TO REMAIN OFF WHEN THE MAINS SUPPLY IS AVAILABLE. WHEN THE MAINS SUPPLY IS NOT AVAILABLE THE LAMP IS TO BE SWITCHED ON SUPPLIED BY THE EMERGENCY PACK. UNSWITCHED SINGLE LAMP NON-MAINTAINED EMERGENCY LIGHTS ARE NOT SWITCHED WITH THE LOCAL GENERAL AREA LIGHTING. (THE LAMP IS ON ONLY WHEN THE MAINS SUPPLY IS NOT AVAILABLE.)
- IF THE FITTING IS BEING SWITCHED, THE LAMP IS TO BE SUPPLIED AND CONTROLLED WITH THE LOCAL GENERAL AREA LIGHTING WHEN THE MAINS SUPPLY IS AVAILABLE. WHEN THE MAINS SUPPLY IS NOT AVAILABLE THE LAMP IS TO BE SWITCHED ON, SUPPLIED BY THE EMERGENCY PACK. (THE LAMP IS ON WHEN TURNED ON WITH THE LOCAL GENERAL LIGHTING OR THE MAIN SUPPLY IS NOT AVAILABLE.)

7.0 COMMUNICATIONS CABLING

THE COMMUNICATIONS CABLING COMPONENT OF THIS CONTRACT INCLUDES NEW COMMUNICATION CAT 6 RJ45 OUTLETS CABLED TO MODULAR PATCH PANELS IN THE EXISTING COMMUNICATIONS RACK CR-A VIA CAT 6 UTP CABLING.

PROVIDE THE STRUCTURED CABLING SOLUTION TO MATCH THE EXISTING USED ACROSS THE SITE AND PROVIDED IT WITH A MANUFACTURERS 15 YEAR WARRANTY.

THE COMMUNICATIONS CABLING COMPONENT OF THIS CONTRACT INCLUDES, BUT IS NOT LIMITED TO THE FOLLOWING EXTENT OF WORK:

- CAT 6 COMMUNICATIONS OUTLETS.
- CAT 6 CABLING.
- MODIFICATIONS TO COMMUNICATIONS RACK CR-A TO ACCOMMODATE THE NEW PATCH PANELS.
- PATCH PANELS.
- FACTORY TERMINATED HDMI CABLES.
- LABELLING .
- TESTING AND COMMISSIONING.

ALL COMMUNICATIONS CABLING IS TO BE UNDERTAKEN BY AN ACMA LICENCE HOLDER. THE PATCH LEADS, FLY LEADS, POE SWITCH AND UPS WILL BE PROVIDED BY THE SCHOOL.

8. ABBREVIATIONS

- A - AMP CURRENT RATING
- AB - MOUNT ABOVE BENCH.
- AFFL - ABOVE FINISHED FLOOR LEVEL.
- BB - MOUNT BELOW BENCH.
- BH - MOUNT ON BULKHEAD.
- CEIL - MOUNT ON CEILING.
- CS - MOUNT WITHIN CEILING SPACE.
- C/W - COMPLETE WITH.
- DR - DRYER.
- DW - DISHWASHER.
- HWS - HOT WATER SYSTEM.
- MCB - MINIATURE CIRCUIT BREAKER.
- MCCB - MOLDED CASE CIRCUIT BREAKER.
- MDB - MAIN DISTRIBUTION BOARD.
- MEN - MULTIPLE EARTH NEUTRAL LINK.
- MSB - MAIN SWITCHBOARD.
- MSSB - MECHANICAL SERVICES SWITCHBOARD.
- MW - MICROWAVE.
- N - NEON / LED INDICATOR WHEN ON.
- NTS - NOT TO SCALE.
- OV - OVEN.
- RCBO - CIRCUIT PROTECTED VIA A 30mA RESIDUAL CURRENT DEVICE INTEGRAL TO THE CIRCUIT BREAKER.
- REF - REFRIGERATOR.
- UNO - UNLESS NOTED OTHERWISE.
- WM - WASHING MACHINE.
- WP - WEATHERPROOF TO IP56 UNO.
- 500 - NUMBER DENOTES MOUNTING HEIGHT AFFL.

D	CONSTRUCTION	17/02/2025
REV:	DESCRIPTION:	DATE:
DRAWING: ELECTRICAL SERVICES NOTES		
SCALE: NOT TO SCALE AT A1	PROJECT NO: C3227a	DRAWING NO: E02
		REVISION: D

601 MILTON ROAD, TOOWONG



ELECTRICAL DESIGN GROUP
ELECTRICAL BUILDING SERVICES CONSULTANTS
BRISBANE GOLD COAST

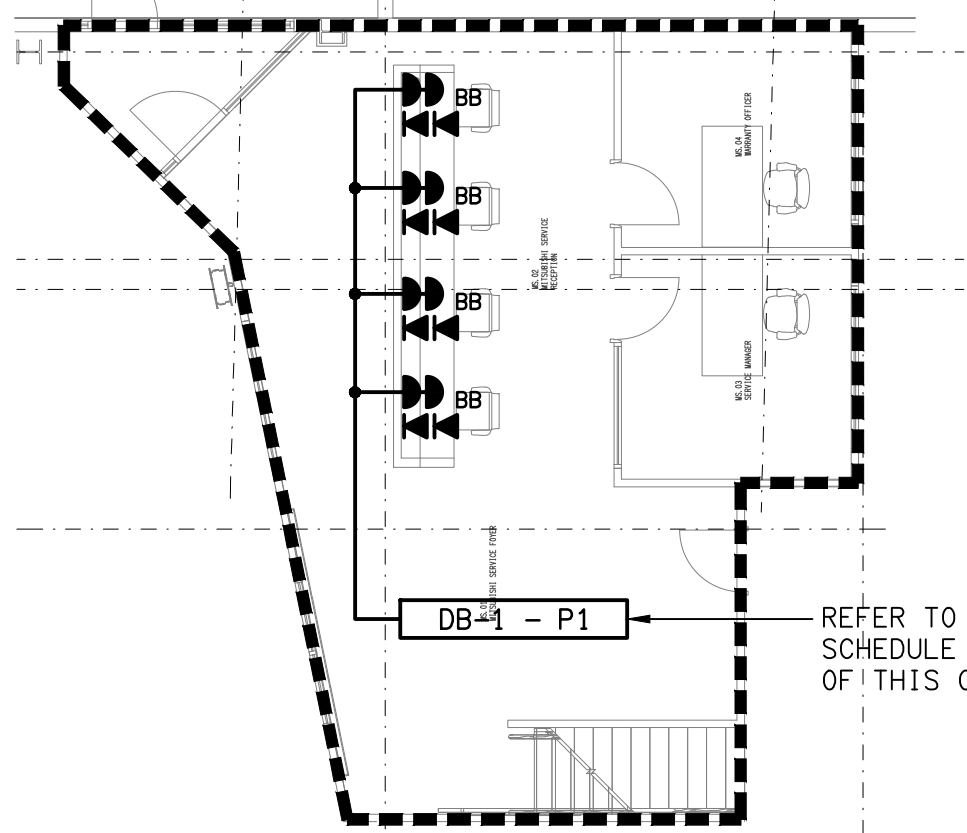
P.O.Box 15, Sherwood Q.4075
Phone: (07) 3278 4375
Email: brisbane@edg.net.au
Web: www.edg.net.au

PROJECT:

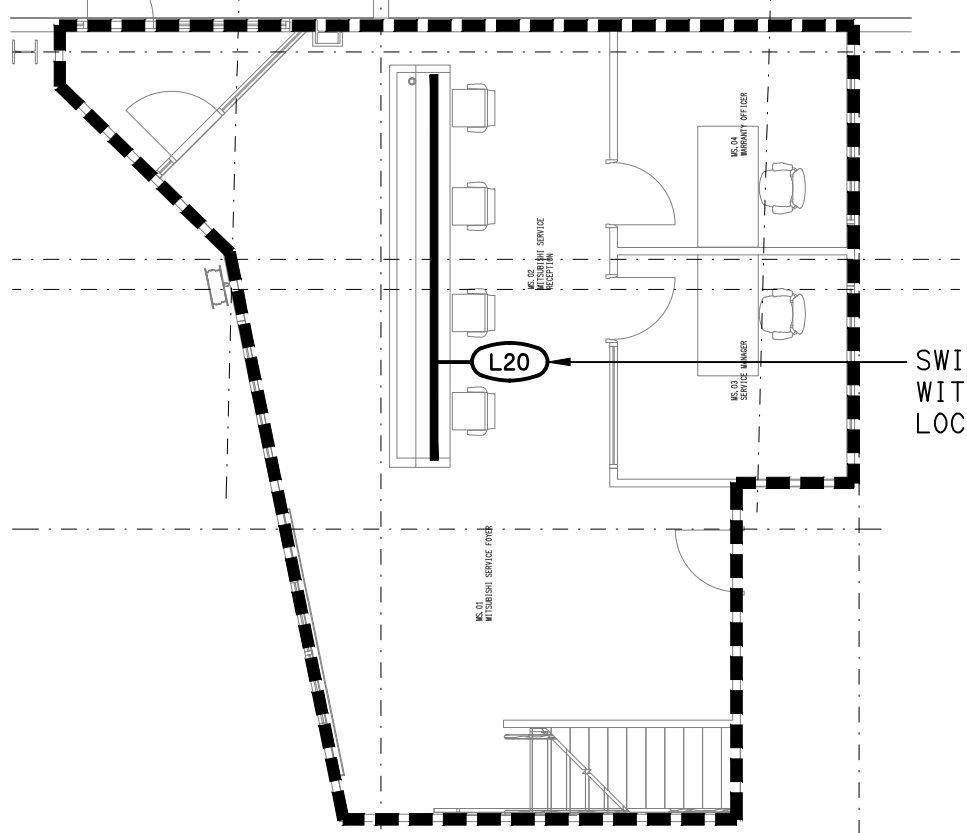
TOOWONG KIA & MITSUBISHI



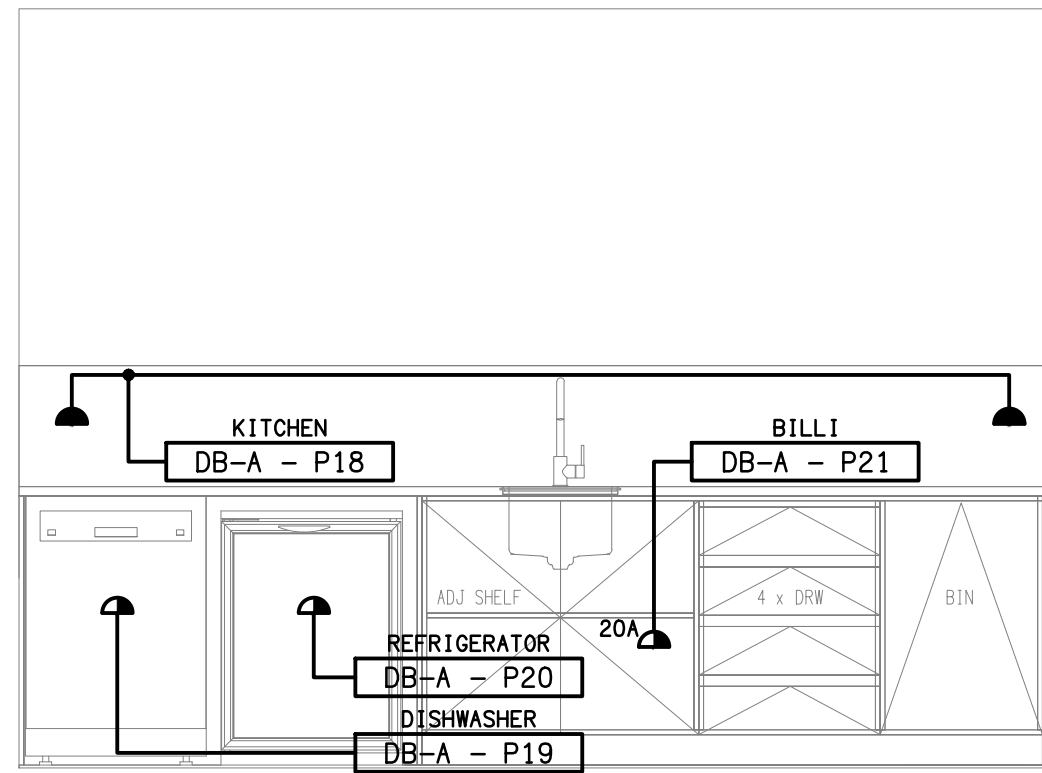
E	CONSTRUCTION		22/04/2025
REV:	DESCRIPTION:	DATE:	
DRAWING:			
ELECTRICAL SERVICES SITE PLAN & ELEVATIONS			
SCALE:	PROJECT NO:	DRAWING NO:	REVISION:
AS SHOWN AT A1	C3227a	E03	E



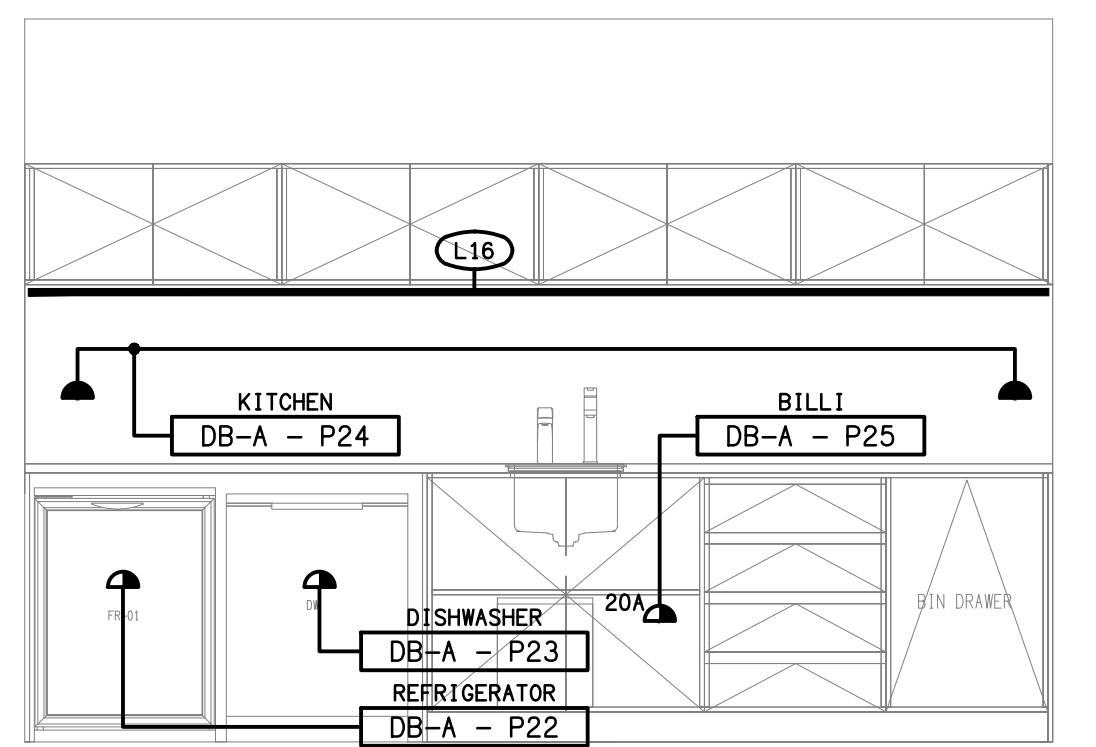
MITSUBISHI BOOK-IN
MEZZANINE FLOOR PLAN
SCALE 1:100



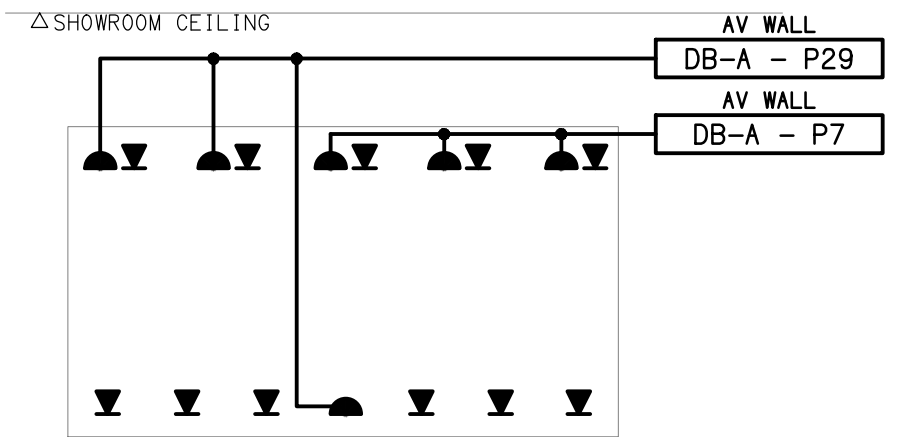
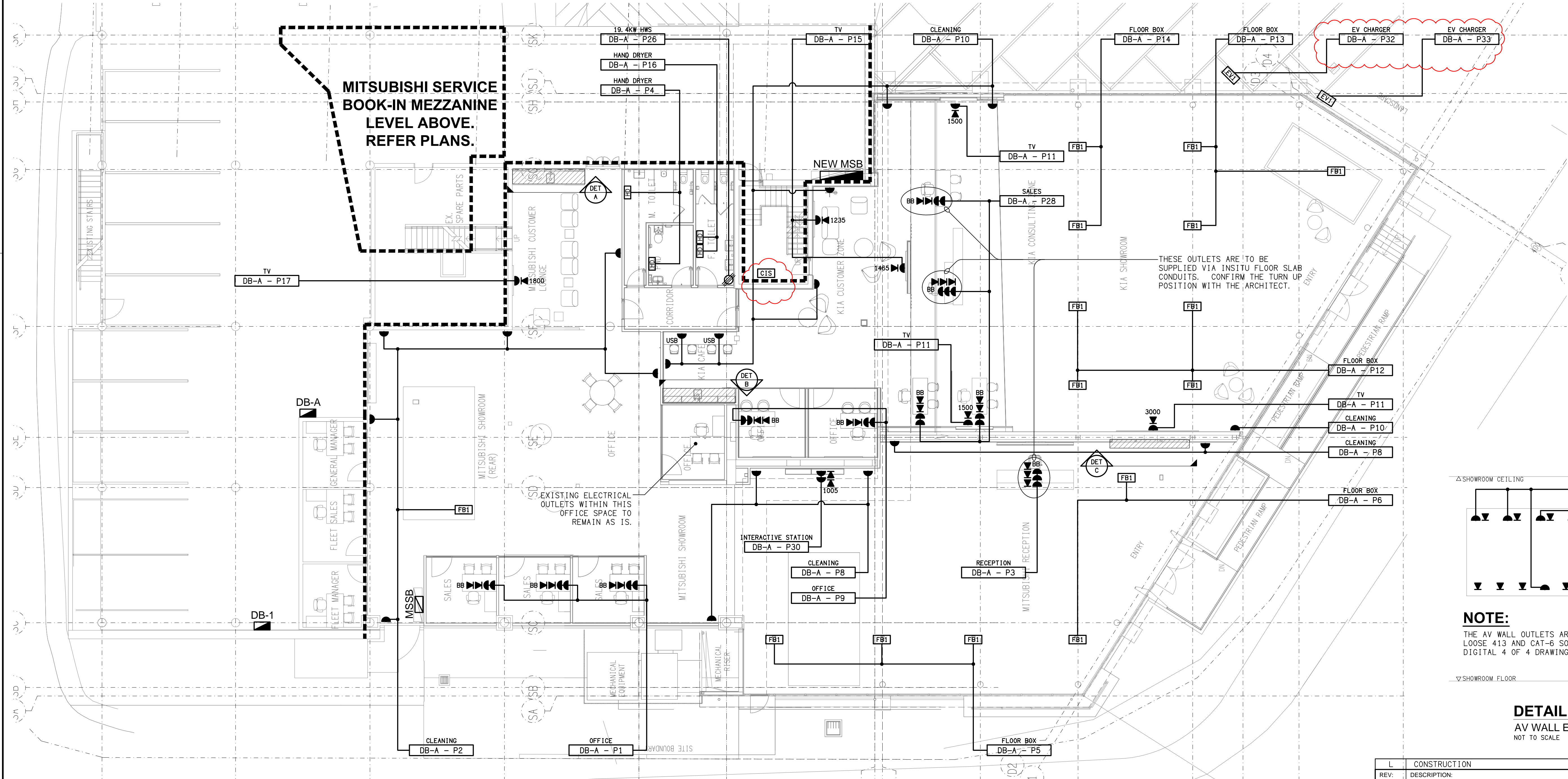
MITSUBISHI BOOK-IN
MEZZANINE REFLECTED CEILING PLAN
SCALE 1:100



DETAIL A
MITSUBISHI KITCHENETTE ELEVATION
SCALE 1:25

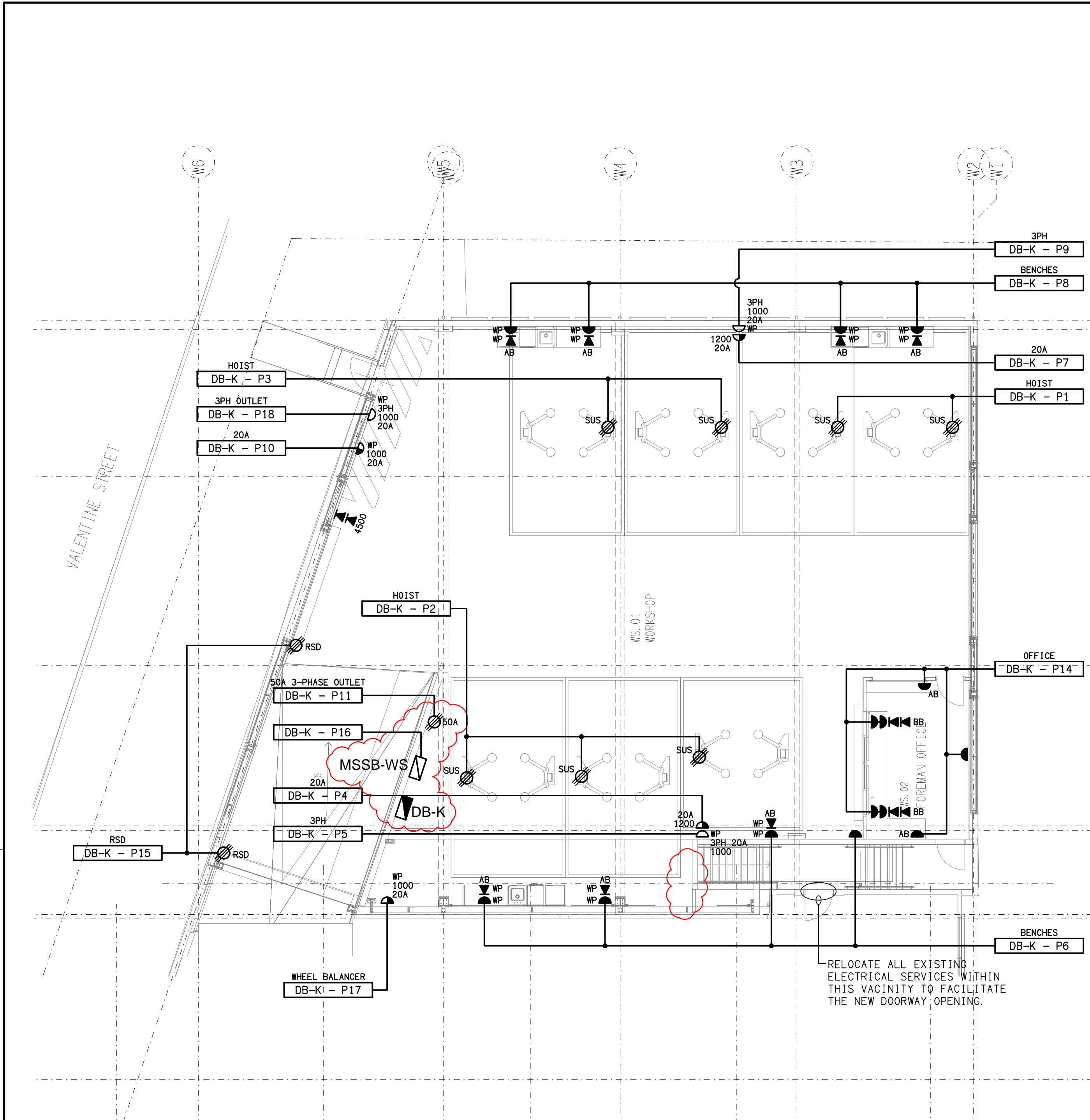


DETAIL B
KIA KITCHENETTE ELEVATION
SCALE 1:25

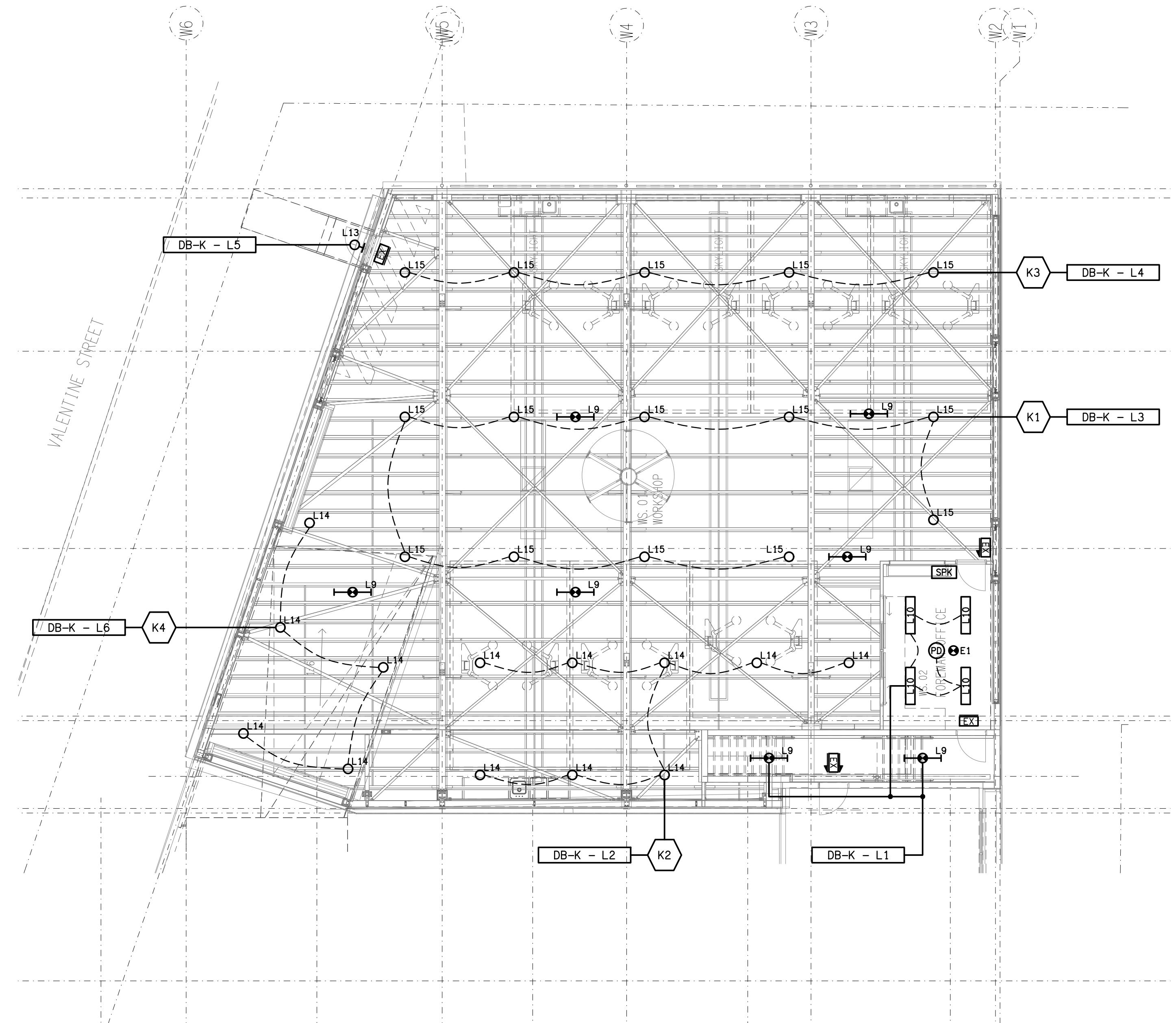


NOTE:
THE AV WALL OUTLETS ARE TO BE PROVIDED AS LOOSE 413 AND CAT-6 SOCKETS AS PER THE ONQ DIGITAL 4 OF 4 DRAWINGS DATED 25-03-2024.

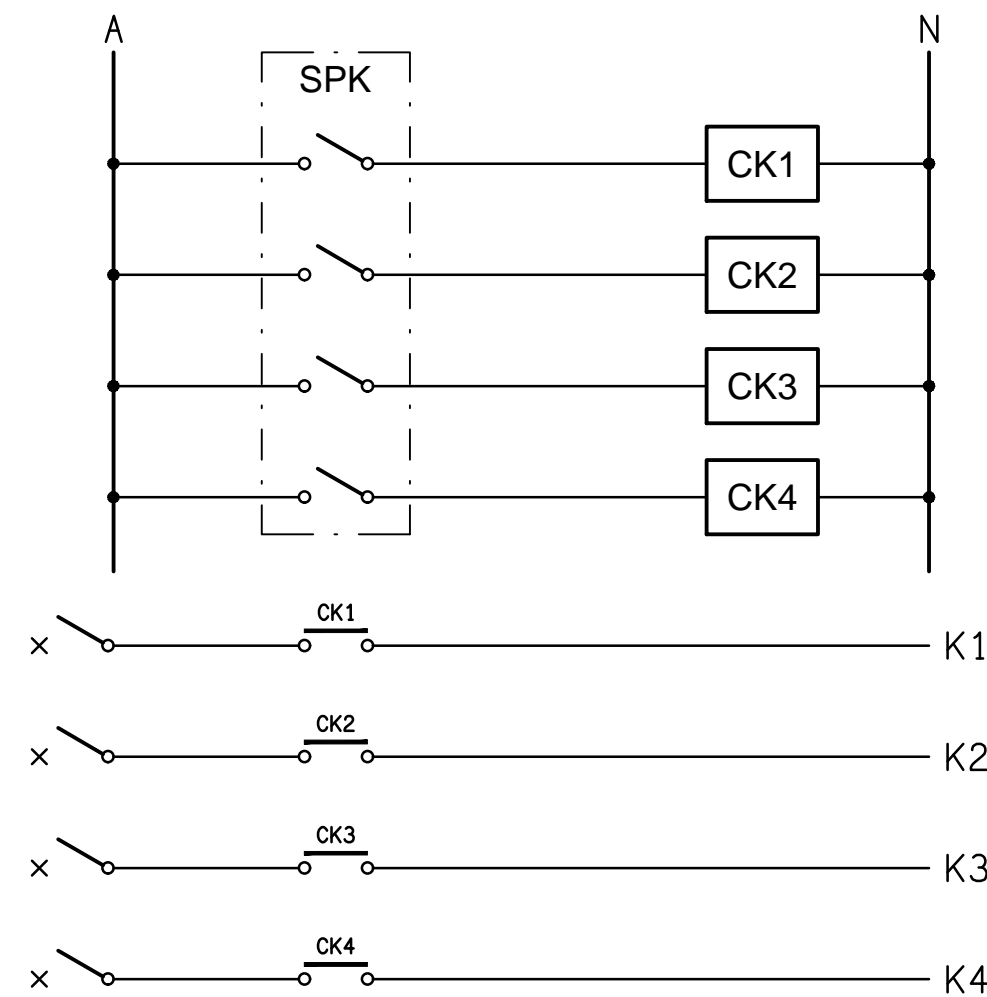
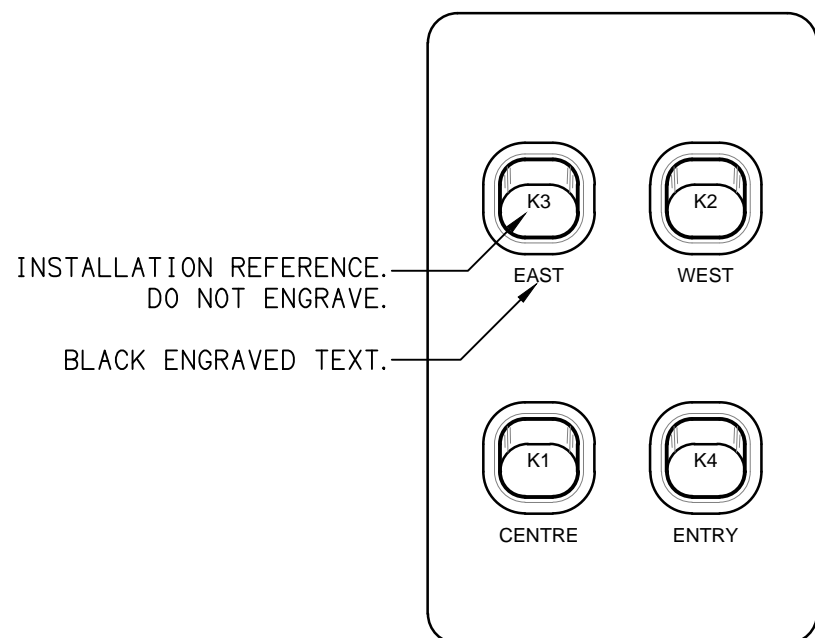
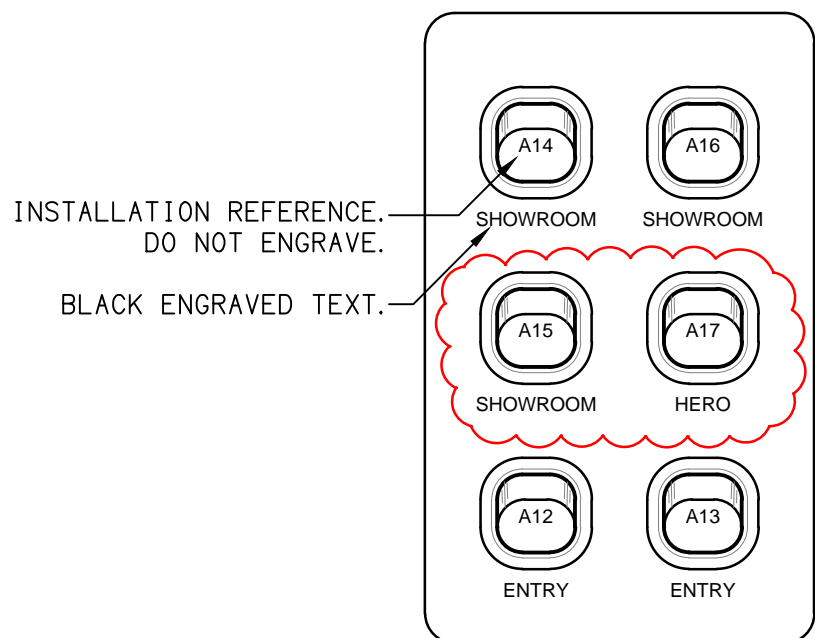
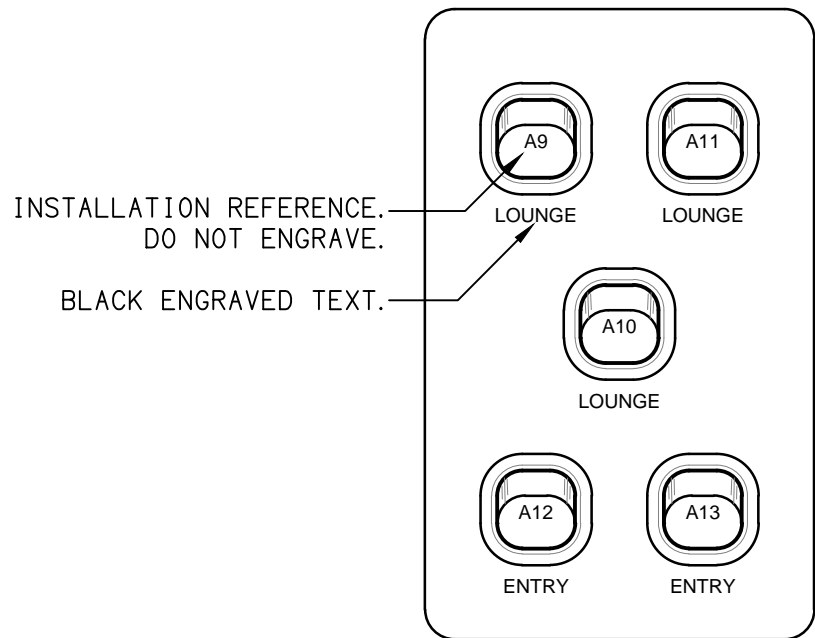
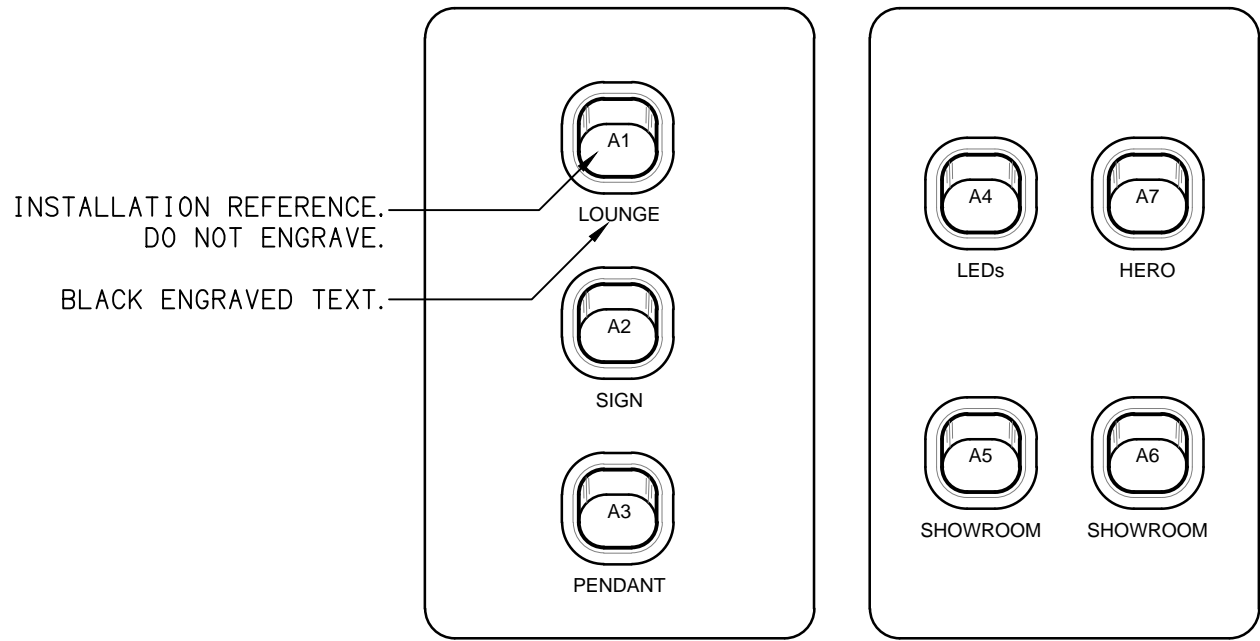
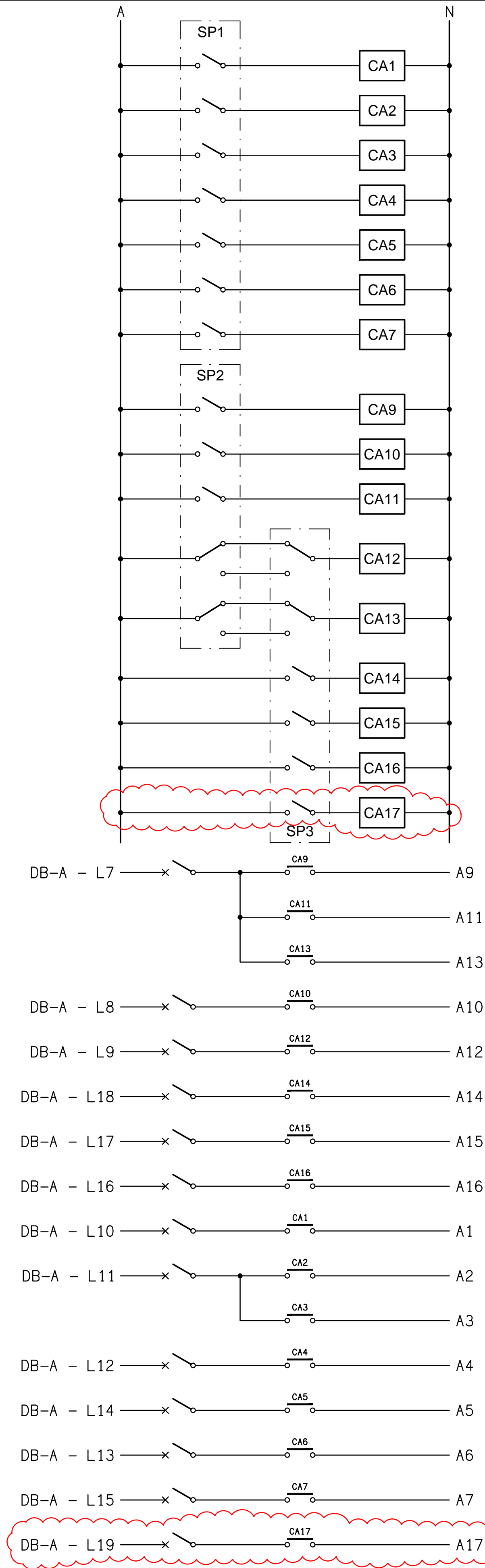
DETAIL C
AV WALL ELEVATION
NOT TO SCALE



WORKSHOP
FLOOR PLAN
SCALE 1: 100



WORKSHOP
REFLECTED CEILING PLAN
SCALE 1: 100



SCHEMATIC
SWITCH PANEL SPK
NOT TO SCALE