



# ELECTRICAL DESIGN GROUP

ELECTRICAL BUILDING SERVICES CONSULTANTS

P.O. Box 15, SHERWOOD Q. 4075

Phone: (07) 3278 4375

Website: www.edg.net.au Email: brisbane@edg.net.au

C3316a - MOTORAMA - HILLCREST NISSAN

C3316a-0001(D).xls

## ELECTRICAL SERVICES CONTRACT DOCUMENT SCHEDULE

REVISION D - 06 AUGUST 2025

ISSUING INFORMATION				DATE OF ISSUE							
	DAY	24	10	11	06						
	MONTH	09	10	10	08						
	YEAR	24	24	24	25						
REASON FOR ISSUE				P	T	T	T				
A = APPROVAL				C = CONSTRUCTION				N = COORDINATION			
				P = PRELIMINARY				T = TENDER			

DISTRIBUTION				NUMBER OF COPIES							
WWW.EDG.NET.AU				1E	1E	1E	1E				
ACTUATED DESIGN				1E	1E	1E	1E				
P = PRINT				T = TRACING				D = DISC			
				E = EMAIL				F = FAX			

DOCUMENTS				REVISION							
C3316a-E01.dwg	LEGEND, SCHEMATICS & DETAILS			A	B	C	D				
C3316a-E02.dwg	SITE PLAN & ELEVATION			A	B	C	D				
C3316a-E03.dwg	FLOOR PLAN			A	B	C	D				
C3316a-E04.dwg	REFLECTED CEILING PLAN			A	B	C	D				
C3316a-E05.dwg	EXISTING PLANS			A	B						
C3316a-0001.xls	CONTRACT DOCUMENT SCHEDULE			A	B	C	D				
C3316a-0002.xls	EQUIPMENT SCHEDULE				A	B	C				
C3316a-0004.xls	DISTRIBUTION BOARD DB-K SCHEDULE				A	B	C				
C3316a-0001.zip	FITTING & OUTLET DATASHEETS					A					



# ELECTRICAL DESIGN GROUP

ELECTRICAL BUILDING SERVICES CONSULTANTS

P.O. Box 15, SHERWOOD Q. 4075

Phone: (07) 3278 4375 Fax: (07) 3716 0222

Web Site: [www.edg.net.au](http://www.edg.net.au) Email: [brisbane@edg.net.au](mailto:brisbane@edg.net.au)

C3316a - MOTORAMA - HILLCREST NISSAN

C3316a-0002(C).xls

## ELECTRICAL EQUIPMENT SCHEDULE

REVISION C - 06 AUGUST 2025

THE EQUIPMENT SUPPLIER CONTACT DETAILS MAY BE AVAILABLE ON THE EDG WEBSITE VIA THE FOLLOWING LINK  
[www.edg.net.au/links.html](http://www.edg.net.au/links.html)

TYPE	LAMPS	DESCRIPTION	COLOUR / ACCESSORY	CATALOGUE No	REV
L1	NO LONGER REQUIRED				C
L2	45W 3000K LED	RECESSED DOWNLIGHT C/W REMOTE DRIVER	WHITE	EQUAL TO GAMMA ILLUMINATION MERCURY 1288-3K-45W	A
L3	34W 4000K LED	REPLACE THE EXISTING TBAR TROFFER WITH A NEW 600 X 600 T BAR LED FLAT PANEL TROFFER.	WHITE	EQUAL TO GAMMA ILLUMINATION AXIS G3 1548- 4K-34W	A
L4	22W LED 3000K	NEW CUSTOMER LOUNGE RECESSED LED DOWNLIGHT.	WHITE	EQUAL TO GAMMA ILLUMINATION COBALT 1402-3K-22W	A
L5	13W 4000K LED	NEW CORRIDOR RECESSED LED DOWNLIGHT TO MATCH THE D1 FITTING.	WHITE	EQUAL TO GAMMA ILLUMINATION MYLO 1004-FL-4K-13W	A
L6	24W 4000K LED	NEW DELIVERY STORE RECESSED LED DOWNLIGHT.	WHITE	EQUAL TO SAL LIGHTING RENMARK S9083R35TC/DP - 24/35W	A
L7	NO LONGER REQUIRED				C
L8	28W LED 3000K	NEW MITSUBISHI SALES RECESSED LED DOWNLIGHT TO MATCH THE D2 FITTING.	WHITE	EQUAL TO GAMMA ILLUMINATION COBALT 1403-3K-28W	A
L9	NO LONGER REQUIRED				C
L10	PROVIDE A POWER SUPPLY IN A CONCEALED ACCESSIBLE POSITION FOR THE FEATURE MITSUBISHI RED LED STRIPS COORDINATE THE POSITION ON SITE WITH EH SIGNAGE SUPPLIER				A
L11	36W 3000K LED	REPLACE THE EXISTING RECESSED DOWNLIGHT WITH A NEW FITTING C/W REMOTE DRIVER	WHITE	EQUAL TO GAMMA ILLUMINATION COBALT 1717-3K-36W	C
L12	36W 3000K LED	NEW RECESSED DOWNLIGHT C/W REMOTE DRIVER	WHITE	EQUAL TO GAMMA ILLUMINATION COBALT 1717-3K-36W	C
F1	34W 4000K LED	REPLACE THE EXISTING FLUORESCENT PB RECESSED TROFFER WITH AN LED FLAT PLATE TROFFER	WHITE TRIM	EQUAL TO GAMMA ILLUMINATION AXIS 1549-4K-34W C/W FLUSH RECESS PB KIT	A



# ELECTRICAL DESIGN GROUP

ELECTRICAL BUILDING SERVICES CONSULTANTS

P.O. Box 15, SHERWOOD Q. 4075

Phone: (07) 3278 4375 Fax: (07) 3716 0222

Web Site: [www.edg.net.au](http://www.edg.net.au) Email: [brisbane@edg.net.au](mailto:brisbane@edg.net.au)

C3316a - MOTORAMA - HILLCREST NISSAN

C3316a-0002(C).xls

## ELECTRICAL EQUIPMENT SCHEDULE

REVISION C - 06 AUGUST 2025

THE EQUIPMENT SUPPLIER CONTACT DETAILS MAY BE AVAILABLE ON THE EDG WEBSITE VIA THE FOLLOWING LINK  
[www.edg.net.au/links.html](http://www.edg.net.au/links.html)

TYPE	LAMPS	DESCRIPTION	COLOUR / ACCESSORY	CATALOGUE No	REV
F2	34W 4000K LED	REPLACE THE EXISTING FLUORESCENT T BAR RECESSED TROFFER WITH AN LED FLAT PLATE TROFFER	WHITE TRIM	EQUAL TO GAMMA ILLUMINATION AXIS 1549-4K-34W	A
F4	36W LED 4000K	REPLACE THE EXISTING FLUORESCENT SURFACE BATTEN C/W NON MAINTAINED AS2293 PACK WITH AN LED BATTEN C/W NON MAINTAINED AS2293 PACK.	LIGHT GREY	EQUAL TO GAMMA ILLUMINATION STORM 1558-CCT- 36W	A
F5	36W LED 4000K	REPLACE THE EXISTING WALL MOUNTED FLUORESCENT BATTEN WITH AN LED BATTEN.	LIGHT GREY	EQUAL TO GAMMA ILLUMINATION STORM 1558-CCT- 36W	A
D1	13W 4000K LED	REPLACE THE EXISTING AMENITY / CIRCULATION FLUORESCENT RECESSED DOWNLIGHT WITH AN LED RECESSED DOWNLIGHT.	WHITE	EQUAL TO GAMM ILLUMINATION MYLO 1004-FL-4K-13W	A
D2	28W LED 3000K	REPLACE THE EXISTING SALES FLUORESCENT RECESSED DOWNLIGHT WITH AN LED RECESSED DOWNLIGHT.	WHITE	EQUAL TO GAMMA ILLUMINATION COBALT 1403-3K-28W	A
D5	24W 4000K LED	REPLACE THE EXISTING EXTERNAL SOFFIT FLUORESCENT RECESSED DOWNLIGHT WITH AN LED RECESSED DOWNLIGHT.	WHITE	EQUAL TO SAL LIGHTING RENMARK S9083R35TC/DP - 24/35W	A
D6	45W 3000K LED	REPLACE THE EXISTING DRIVE THROUGH FLUORESCENT RECESSED DOWNLIGHT WITH AN LED RECESSED DOWNLIGHT.	WHITE	EQUAL TO GAMMA ILLUMINATION MERCURY 1288-3K- 45W	A
W2	36W 4000K LED	REPLACE THE EXISTING EXTERNAL WALL LIGHT WITH AN LED WALL LIGHT.	SILVER	EQUAL TO WE EF OLV340S	A
E1	LED	EMERGENCY LIGHT: RECESSED NON-MAINTAINED EMERGENCY LIGHT. AS2293 CLASSIFICATION C0-D40 - C90-D40.	WHITE	CLEVERTRONICS CLIFE	A
E2	LED	EMERGENCY LIGHT: RECESSED NON-MAINTAINED EMERGENCY LIGHT. AS2293 CLASSIFICATION C0-D40 - C90-D40.	WHITE	CLEVERTRONICS CLIFE	A



# ELECTRICAL DESIGN GROUP

ELECTRICAL BUILDING SERVICES CONSULTANTS

P.O. Box 15, SHERWOOD Q. 4075

Phone: (07) 3278 4375 Fax: (07) 3716 0222

Web Site: [www.edg.net.au](http://www.edg.net.au) Email: [brisbane@edg.net.au](mailto:brisbane@edg.net.au)

C3316a - MOTORAMA - HILLCREST NISSAN

C3316a-0002(C).xls

## ELECTRICAL EQUIPMENT SCHEDULE

REVISION C - 06 AUGUST 2025

THE EQUIPMENT SUPPLIER CONTACT DETAILS MAY BE AVAILABLE ON THE EDG WEBSITE VIA THE FOLLOWING LINK  
[www.edg.net.au/links.html](http://www.edg.net.au/links.html)

TYPE	LAMPS	DESCRIPTION	COLOUR / ACCESSORY	CATALOGUE No	REV
EX	LED	EXIT LIGHT: MAINTAINED 24M VIEWING DISTANCE EXIT LIGHT C/W DIFFUSERS & DIRECTIONAL ARROWS AS SHOWN AND A IP56 HOUSING CEILING OR WALL MOUNT BETWEEN 2100mm & 2700mm AFFL IF THERE IS NO VERTICAL SURFACE TO MOUNT THE FITTING ON WITHIN THIS RANGE CONFIRM THE MOUNTING HEIGHT WITH THE ENGINEER. AS2293 CLASSIFICATION C0-D3.2 - C90-E2.	WHITE LOGO GREEN BACKGROUND WHITE BODY	CLEVERTRONICS LUB PRO SM	A
ONE-WAY LIGHT SWITCH		ONE-WAY LIGHT SWITCH C/W CIRCUIT IDENTIFICATION ON THE FACEPLATE BEHIND THE SURROUND MOUNTED AT 1000mm AFFL UNLESS NOTED OTHERWISE.	WHITE	CLIPSAL C2000 SERIES FACEPLATE	A
LIGHTING CONTROL SWITCH PANEL (SP1)		WALL MOUNTED MULTI GANG SWITCH PANEL MOUNTED AT 1000mm AFFL UNLESS NOTED OTHERWISE.	WHITE	CLIPSAL C2000 SERIES	A
LIGHTING CONTROL SWITCH PANEL (SP2)		WALL MOUNTED MULTI GANG SWITCH PANEL MOUNTED AT 1000mm AFFL UNLESS NOTED OTHERWISE.	WHITE	CLIPSAL C2000 SERIES	A
SINGLE POWER OUTLET		SINGLE POWER OUTLET C/W CIRCUIT IDENTIFICATION ON THE FACEPLATE BEHIND THE SURROUND MOUNT AT 300 AFFL U.N.O.	WHITE	CLIPSAL C2000 SERIES	A
DOUBLE POWER OUTLET		DOUBLE POWER OUTLET C/W CIRCUIT IDENTIFICATION ON THE FACEPLATE BEHIND THE SURROUND MOUNT AT 300 AFFL U.N.O.	WHITE	CLIPSAL C2000 SERIES	A
CAT 6 COMMUNICATIONS OUTLET		RJ45 CAT-6 COMMUNICATIONS OUTLET, CABLED BACK TO THE COMMUNICATIONS RACK CR-K TERMINATED ONTO FACILITY PATCH PANELS VIA 4-PAIR CAT-6 UTP CABLE. MOUNT UP TO 3 RJ45 OUTLETS PER MULTI-GANG FACEPLATE WITH SEPARATE PERMANENT LABELLING FOR EACH OUTLET. MOUNT AT 300 AFFL U.N.O.	WHITE	CLIPSAL C2000 SERIES KRONE JACK C/W SHUTTER	A
DB-K		UPGRADE THE EXISTING DISTRIBUTION BOARD DB-K AS NECESSARY TO ACCOMMODATE THE CIRCUIT MODIFICATIONS AND ADDITIONS REFER TO THE NOTES AND DISTRIBUTION BOARD DB-K SCHEDULE FOR ADDITIONAL INFORMATION AND REQUIREMENTS. REMOVE ALL EXISTING CIRCUITS AND CABLING MADE REDUNDANT BY THE WORKS.			A
FLOOR BOX (FB1)		EXISTING FLOOR BOX TO REMAIN AS IS			A
FLOOR BOX (FB2)		INSITU FLUSH FLOOR BOX C/W A DOUBLE GPOS+ 2 COMMUNICATIONS OUTLETS ON THE SAME FACEPLATE. PROVIDE A 32 DIA CONDUIT C/W A SPARE DRAW WIRE FROM THE REAR OF THE COMMUNICATIONS FACEPLATE TO THE CEILING SPACE ABOVE THE COMMUNICATIONS RACK CR-A. PROVIDE THE GPOS AND COMMUNICATIONS OUTLETS AS PER THE STANDARD DESCRIPTIONS.	STAINLESS STEEL	ECD FB2SHD	A



# ELECTRICAL DESIGN GROUP

ELECTRICAL BUILDING SERVICES CONSULTANTS

P.O. Box 15, SHERWOOD Q. 4075

Phone: (07) 3278 4375 Fax: (07) 3716 0222

Web Site: [www.edg.net.au](http://www.edg.net.au) Email: [brisbane@edg.net.au](mailto:brisbane@edg.net.au)

C3316a - MOTORAMA - HILLCREST NISSAN

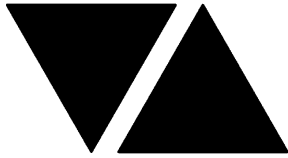
C3316a-0002(C).xls

## ELECTRICAL EQUIPMENT SCHEDULE

REVISION C - 06 AUGUST 2025

THE EQUIPMENT SUPPLIER CONTACT DETAILS MAY BE AVAILABLE ON THE EDG WEBSITE VIA THE FOLLOWING LINK  
[www.edg.net.au/links.html](http://www.edg.net.au/links.html)

TYPE	LAMPS	DESCRIPTION	COLOUR / ACCESSORY	CATALOGUE No	REV
SIGN CONNECTION		COORDINATE THE LOCATION AND CONNECTION WITH THE SIGN CONTRACTOR ENSURING THE GPO / ISOLATORS ARE PROVIDED WITH APPROPRIATE WEATHER PROTECTION AND ARE CONCEALED FROM VIEW.			A
COMMUNICATIONS RACK CR-K		EXISTING COMMUNICATIONS RACK TO BE UPGRADED AS NECESSARY AND PROVIDED WITH ADDITIONAL PATCH PANELS TO ACCOMMODATE THE ADDITIONAL COMMUNICATIONS OUTLETS. REMOVE ALL REDUNDANT CABLING AND UPDATE THE PORT NUMBERING.			A
MOTION SENSOR (MS)		EXISTING LIGHTNG MOTION SENSOR SWITCH TO REMAIN AS IS.			B



# ELECTRICAL DESIGN GROUP

ELECTRICAL BUILDING SERVICES CONSULTANTS

P.O. Box 15, SHERWOOD Q. 4075

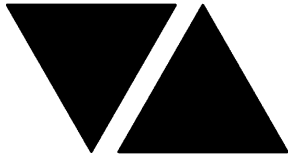
Phone: (07) 3278 4375 Fax: (07) 3716 0222

Web Site: www.edg.net.au Email: brisbane@edg.net.au

**C3316a - MOTORAMA - HILLCREST NISSAN**  
**DISTRIBUTION BOARD DB-K (KIA BUILDING)**  
**REVISION C - 06 AUGUST 2025**

**C3316a-0004(C).xls**

							REV
FAULT CURRENT: 6KA							A
CHASSIS SIZE: 84 POLES							A
CHASSIS RATING: 250A							A
PHASES: 3							A
MAIN SWITCH: 250A NON AUTO ISOLATOR							
SUPPLIED FROM: MSB							
SUPPLY CABLE: 1C 95							
MODIFY THE EXISTING DISTRIBUTION BOARD TO ACCOMMODATE THE ADDITIONAL CIRCUITS AND CHANGES. REMOVE ALL SWITCHGEAR THAT BECOMES REDUNDANT. UPDATE THE SCHEDULE AT PRACTICAL COMPLETION. ALL NEW SWITCHGEAR IS TO MATCH THE EXISTING.							A
CIRC	PH	CIRCUIT BREAKER (amps)	CONTROL EQUIPMENT	CABLE SIZE ( mm2 )	LOCATION	CIRCUIT USE	
P1	1	20	RCBO	2.5	EXTERNAL	EXISTING RAIN BIRD PUMP	A
P2	1	20	RCBO	2.5	EXTERNAL	EXISTING MAINTENANCE	A
P3	1	20	RCBO	2.5	OFFICES	EXISTING GPOs	A
P4							A
P5	1	20	RCBO	2.5	NISSAN	REUSE EXISTING SALES	A
P6	1	20	RCBO	2.5		REUSE EXISTING SALES	A
P7	1	20	RCBO	2.5		REUSE EXISTING CLEANER	A
P8	1	20	RCBO	2.5		EXISTING FLOOR BOX	A
P9	1	20	RCBO	2.5		EXISTING FLOOR BOX	A
P10							A
P11	1	20	RCBO	2.5	SHOWROOM	EXISTING AUTO DOOR	A
P12	1	20	RCBO	2.5	MITSUBISHI	EXISTING RECEPTION	A
P13	1	20	RCBO	2.5		EXISTING SALES	A
P14							A
P15	1	20	RCBO	2.5		EXISTING PRINTER	A
P16	1	20	RCBO	2.5		EXISTING OFFICE	A
P17	1	20	RCBO	2.5		EXISTING CLEANER	A
P18	1	20	RCBO	2.5	SERVICE	EXISTING RECEPTION	A
P19	1	20	RCBO	2.5	SERVICE	EXISTING EXTERNAL DESK	A
P20	1	20	RCBO	2.5	SERVICE	EXISTING PRINTER	A
P21	1	20	RCBO	2.5	SERVICE	EXISTING TV	A
P22							A
P23	1	25	RCBO	4.0	AMENITY	EXIST HAND DRYER	A
P24	1	20	RCBO	2.5	AMENITY	EXISTING 3.6KW HWS	A
P25	1	20	RCBO	2.5	TRAINING	REUSE EXISTING GPOs	A
P26	1	20	RCBO	2.5	STORE	EXISTING GPOs	A
P27	1	20	RCBO	2.5	STORE	EXISTING SECURITY	A
P28	1	20	RCBO	2.5	STORE	EXISTING CR-K	A
P29	1	20	RCBO	2.5		EXISTING KITCHEN	A
P30	1	20	RCBO	2.5		EXISTING AUTO BOILER	A
P31	1	20	RCBO	2.5		EXISTING HWS	A
P32	1	20	RCBO	2.5	CAFE	EXISTING COFFEE	A
P33	1	20	RCBO	2.5	CAFE	EXISTING GPOs	A
P34	1	20	RCBO	2.5	CAFE	EXISTING HWS	A
P35	1	20	RCBO	2.5	CAFE	EXISTING AUTO BOILER	A
P36	1	20	RCBO	2.5	EXTERNAL	EXISTING GPOs	A
P37	1	20	RCBO	2.5	ROOF	EXISTING GPOs	A
P38							C
P39							C
P40	1	20	RCBO	2.5	DELIVERY	NEW BLINDS	A



# ELECTRICAL DESIGN GROUP

ELECTRICAL BUILDING SERVICES CONSULTANTS

P.O. Box 15, SHERWOOD Q. 4075

Phone: (07) 3278 4375 Fax: (07) 3716 0222

Web Site: www.edg.net.au Email: brisbane@edg.net.au

**C3316a - MOTORAMA - HILLCREST NISSAN**  
**DISTRIBUTION BOARD DB-K (KIA BUILDING)**  
**REVISION C - 06 AUGUST 2025**

**C3316a-0004(C).xls**

<div>FAULT CURRENT: 6KA</div> <div>CHASSIS SIZE: 84 POLES</div> <div>CHASSIS RATING: 250A</div> <div>PHASES: 3</div> <div>MAIN SWITCH: 250A NON AUTO ISOLATOR</div> <div>SUPPLIED FROM: MSB</div> <div>SUPPLY CABLE: 1C 95</div>							REV
							A
							A
							A
MODIFY THE EXISTING DISTRIBUTION BOARD TO ACCOMMODATE THE ADDITIONAL CIRCUITS AND CHANGES. REMOVE ALL SWITCHGEAR THAT BECOMES REDUNDANT. UPDATE THE SCHEDULE AT PRACTICAL COMPLETION. ALL NEW SWITCHGEAR IS TO MATCH THE EXISTING.							A
CIRC	PH	CIRCUIT BREAKER (amps)	CONTROL EQUIPMENT	CABLE SIZE ( mm2 )	LOCATION	CIRCUIT USE	
L1	1	20	RCBO	2.5	EXTERNAL	REUSE EXISTING BUILDING SIGNAGE	A
L2	1	20	RCBO	2.5	EXTERNAL	REUSE EXISTING BUILDING SIGNAGE	A
L3	1	20	RCBO	2.5	EXTERNAL	REUSE EXISTING BUILDING SIGNAGE	A
L4	1	20	RCBO	2.5	EXTERNAL	EXISTING BUILDING SIGNAGE	A
L5	1	20	RCBO	2.5	EXTERNAL	REUSE EXISTING SECURITY LIGHTING	A
L6	1	20	RCBO	2.5	INTERNAL	REUSE EXISTING SECURITY LIGHTING	A
L7	1	20	RCBO	2.5	EXTERNAL	REUSE EXISTING DRIVE THRU LIGHTING	A
L8	1	20	RCBO	2.5	SHOWROOM	REUSE EXISTING LIGHTING	A
L9	1	20	RCBO	2.5	SHOWROOM	REUSE EXISTING LIGHTING	A
L10	1	20	RCBO	2.5	SHOWROOM	REUSE EXISTING LIGHTING	A
L11	1	20	RCBO	2.5	SHOWROOM	REUSE EXISTING LIGHTING	A
L12	1	20	RCBO	2.5	SALES	REUSE EXISTING LIGHTING	A
L13	1	20	RCBO	2.5	BOH	REUSE EXISTING LIGHTING	A
L14	1	20	RCBO	4.0	EXTERNAL	EXISTING CARPARK LIGHTING	A
L15	1	20	RCBO	4.0	EXTERNAL	EXISTING CARPARK LIGHTING	A
L16	1	20	RCBO	4.0	EXTERNAL	EXISTING CARPARK LIGHTING	A
L17	1	20	RCBO	2.5	EXTERNAL	EXISTING FLOOD LIGHTS	A
L18	1	20	RCBO	2.5	EXTERNAL	EXISTING FLOOD LIGHTS	A
L19	1	20	RCBO	4.0	EXTERNAL	EXISTING PYLON	A
L20	1	20	RCBO	4.0	EXTERNAL	EXISTING PYLON	A
L21	1	20	RCBO	2.5	EXTERNAL	EXISTING CARPARK LIGHTING	A
L22	1	20	RCBO	2.5	DELIVERY	NEW LIGHTING	A
L23							C



LEGEND

	ELECTRICAL SERVICES SWITCHBOARD.
	SINGLE POWER OUTLET.
	DOUBLE POWER OUTLET.
	SPECIAL PURPOSE POWER OUTLET.
	SIGNAGE CONNECTION.
	SINGLE PHASE ISOLATOR.
	THREE PHASE ISOLATOR.
	JUNCTION BOX.
	CONDUIT ROUTE.
	EXISTING ELECTRICAL FLOOR BOX TO REMAIN AS IS.
	NEW ELECTRICAL FLOOR BOX.
	EXISTING LIGHTING MOTION SENSOR SWITCH TO REMAIN AS IS.
	NEW LIGHTING CONTROL SWITCH PANEL 1.
	NEW LIGHTING CONTROL SWITCH PANEL 2.
	ONE-WAY LIGHT SWITCH.
	CIRCUIT LINE.
	SWITCH LINE.
	POWER CIRCUIT DESIGNATION. DENOTES DB AND CIRCUIT.
	RJ45 CAT 6 COMMUNICATIONS OUTLET.

NOTES

1. EXTENT OF WORKS

THE ELECTRICAL SERVICES SUB-CONTRACT INCLUDES BUT IS NOT LIMITED TO THE FOLLOWING:

- SUPPLY AND INSTALLATION OF ALL COMPONENTS FORMING PART OF THE ELECTRICAL SERVICES.
- INSPECTIONS.
- TESTING AND COMMISSIONING.
- MAINTENANCE.
- CABLING, CABLE SUPPORT SYSTEMS AND ACCESS.
- POWER DISTRIBUTION.
- LIGHTING.
- COMMUNICATIONS CABLING.
- REMOVE ALL EXISTING ELECTRICAL SERVICES MADE REDUNDANT BY THE WORKS.
- THE EXISTING ELECTRICAL SERVICES NOT REFERENCED OR SHOWN ARE TO REMAIN AS IS.
- ALL MINOR COMPONENTS AND INCIDENTAL WORKS NOT SPECIFICALLY REFERRED TO, HOWEVER NECESSARY TO COMPLETE THE ELECTRICAL SERVICES INSTALLATION SUCH THAT IT IS HANDED OVER COMPLETE, OPERATIONAL AND FIT FOR THE INTENDED USE.

PRIOR TO COMMENCING WORK CONSULT SITE MANAGEMENT FOR ANY HAZARDOUS MATERIAL AND OR ASBESTOS REGISTERS AS WELL AS UNDERTAKE A THOROUGH INSPECTION OF THE SITE TO IDENTIFY ANY POTENTIAL HAZARDOUS MATERIALS, ASBESTOS AND HEALTH OR SAFETY RISKS. ADVISE THE CONTRACTOR OF ANY POTENTIAL HAZARDOUS MATERIALS, ASBESTOS AND HEALTH OR SAFETY RISKS IF IDENTIFIED AND DO NOT COMMENCE WORK UNTIL AN APPROPRIATE MANAGEMENT PLAN HAS BEEN DEVELOPED AND AGREED TO BY ALL PARTIES.

SUPPLY ALL LABOUR, MATERIALS, EQUIPMENT, AND ALL OTHER ITEMS, WHETHER MENTIONED IN DETAIL OR NOT, REQUIRED FOR THE SATISFACTORY COMPLETION OF THE ELECTRICAL SERVICES INSTALLATION, LEAVING IN FULL WORKING ORDER TO THE SATISFACTION OF THE PROJECT MANAGER.

ACCEPT FULL RESPONSIBILITY FOR LIASING, ARRANGING AND CO-ORDINATION OF ALL WORKS THAT HAVE AN EFFECT ON OR WILL BE AFFECTED BY THE ELECTRICAL SERVICES.

REFER TO THE EQUIPMENT SCHEDULE FOR ADDITIONAL REQUIREMENTS.

2. WORKMANSHIP

ENSURE THAT THE ELECTRICAL WORK IS PERFORMED BY THE HOLDER OF A CURRENT ELECTRICAL SUB CONTRACTOR LICENSE AND THE SERVICES COVERED BY THE ACMA IS PERFORMED BY THE HOLDER OF THE APPROPRIATE CURRENT ACMA LICENSE. ENSURE THE INSTALLATION AND ALL COMPONENTS, FIXTURES, FITTINGS, OUTLETS AND CABLES ARE SUPPLIED AND INSTALLED TO A HIGH STANDARD THROUGHOUT, AND INSTALLED IN A NEAT AND TRADESMAN LIKE MANNER, TO THE CURRENT INDUSTRY STANDARDS. ENSURE ALL MATERIALS AND COMPONENTS OF A SIMILAR TYPE ARE OF THE SAME MANUFACTURER AND INSTALLED IN A UNIFORM MANNER.

IT IS THE ELECTRICAL SUB CONTRACTOR'S RESPONSIBILITY TO ENSURE THAT THE INSTALLATION IS FIT FOR PURPOSE AND IS PROVIDED AS A COMPLETE WORKING INSTALLATION. IT IS THE ELECTRICAL SUB CONTRACTOR'S RESPONSIBILITY TO PROVIDE ALL COMPONENTS, FITTINGS, FIXTURES, SYSTEMS, PROGRAMMING ETC IRRESPECTIVE OF THE LEVEL DETAILED IN THE DOCUMENTS SUCH THAT THE INSTALLATION IS PROVIDED AS A COMPLETE WORKING INSTALLATION.

CONCEAL ALL WIRING AND CONDUITS. EXPOSED CABLING OR CONDUITS ARE GENERALLY NOT ACCEPTABLE. IT IS NOTED THAT CHASING AND REINSTATEMENT WILL BE REQUIRED. ENSURE ALL COMPONENTS, EQUIPMENT AND MATERIALS SUPPLIED ARE NEW, UNUSED, DESIGNED AND SELECTED TO ENSURE SATISFACTORY OPERATION UNDER VARYING ATMOSPHERIC, CLIMATIC, HUMID TROPICAL CONDITIONS WITHOUT DISTORTION AND DETERIORATION IN ANY PART AFFECTING EFFICIENCY AND RELIABILITY OF THE SYSTEMS. DESIGN AND SELECT ALL EQUIPMENT TO PROVIDE THE NECESSARY SAFETY TO HUMAN LIFE AND PROPERTY DURING OPERATION AND MAINTENANCE WITH PARTICULAR ATTENTION GIVEN TO ELECTRICAL SAFETY AND SEGREGATION PRECAUTIONS.

LEGEND

	ELECTRICAL EQUIPMENT AS NOTED.
	REFER TO DETAIL NOTED FOR THE AREA SHOWN HATCHED. ADDITIONAL OUTLETS & FITTINGS MAY BE SHOWN ON DETAIL.
	E1: NEW NON MAINTAINED LED EMERGENCY LIGHT.
	E2: EXISTING NON MAINTAINED LED EMERGENCY LIGHT TO BE REPLACED.
	EX: EXISTING MAINTAINED EMERGENCY LED EXIT LIGHT TO BE REPLACED.
	L1: NO LONGER REQUIRED.
	L2: NEW MITSUBISHI SHOWROOM RECESSED LED DOWNLIGHT.
	L3: REPLACE THE EXISTING T-BAR TROFFER WITH A NEW 600 x 600 T-BAR LED FLAT PANEL TROFFER.
	L4: NEW CUSTOMER LOUNGE RECESSED LED DOWNLIGHT.
	L5: NEW CORRIDOR RECESSED LED DOWNLIGHT TO MATCH THE D1 FITTING.
	L6: NEW DELIVERY STORE RECESSED LED DOWNLIGHT.
	L7: NO LONGER REQUIRED.
	L8: NEW MITSUBISHI SALES RECESSED LED DOWNLIGHT TO MATCH THE D2 FITTING.
	L9: NO LONGER REQUIRED.
	L10: MITSUBISHI RED LED STRIP LIGHT.
	L11: EXISTING DOWNLIGHT TO BE REPLACED.
	L12: NEW DOWNLIGHT.

NOTES

NOTE 2 - CONT

CHECK THE FINISHED PAINTWORK AROUND THE AREA OF EACH INSTALLATION AND TOUCH UP ALL DAMAGED PARTS AND FINISHES AFTER THE INSTALLATION OF THE ELECTRICAL SERVICES.

ALL WORKS ARE TO BE CARRIED OUT IN ACCORDANCE WITH THE BUILDER'S PROGRAM. ENSURE ALL FINAL LOCATIONS OF OUTLETS AND FITTINGS ARE CO-ORDINATED ONSITE WITH THE ARCHITECT AND ALL OTHER SERVICES, TO THE APPROVAL OF THE PROJECT MANAGER. ALLOW TO CO-ORDINATE THE FINAL LOCATION OF ALL EQUIPMENT, FITTINGS, & OUTLETS, SUCH THAT THEY ARE INSTALLED IN ACCORDANCE WITH THE AS3000 RESTRICTED ZONES, AND ARE NOT COVERED INAPPROPRIATELY.

ENSURE THAT ALL METAL SURFACES ARE SUITABLY PROTECTED AGAINST CORROSION, AND THAT ALL PLASTIC MATERIALS ARE UV STABILISED.

PROVIDE ALL MATERIALS AS NEW, AND OF THE HIGHEST CLASS AVAILABLE FOR THEIR RESPECTIVE TYPES. ENSURE ALL ASPECTS OF THE WORK ARE OF A HIGH STANDARD THROUGHOUT, AND INSTALLED IN A NEAT AND TRADESMAN LIKE MANNER, TO THE CURRENT INDUSTRY STANDARDS.

3. STANDARDS

IRRESPECTIVE OF INFORMATION CONTAINED IN THE ELECTRICAL SERVICES DOCUMENTS OR IN INSTRUCTIONS, IT IS THE ELECTRICAL SUB CONTRACTOR'S RESPONSIBILITY TO ENSURE ALL ELECTRICAL SERVICES WORKS ARE INSTALLED IN ACCORDANCE WITH THE REQUIREMENTS OF THE FOLLOWING. REFER ANY DISCREPANCIES BETWEEN THE REQUIREMENTS OF THE FOLLOWING AND/OR THE ELECTRICAL SERVICES DOCUMENTS AND INSTRUCTIONS TO THE ARCHITECT FOR CLARIFICATION PRIOR TO THE PLACING OF ORDERS, FABRICATION OR INSTALLATION OF THE ITEMS/METHODS IN DISCREPANCY.

- NCC BUILDING CODE OF AUSTRALIA.
- ELECTRICITY ACT.
- ELECTRICAL SAFETY ACT.
- AS/NZS3000.
- AS3008.
- WORKPLACE HEALTH AND SAFETY ACT.
- TELECOMMUNICATIONS ACT.
- ACMA REQUIREMENTS.

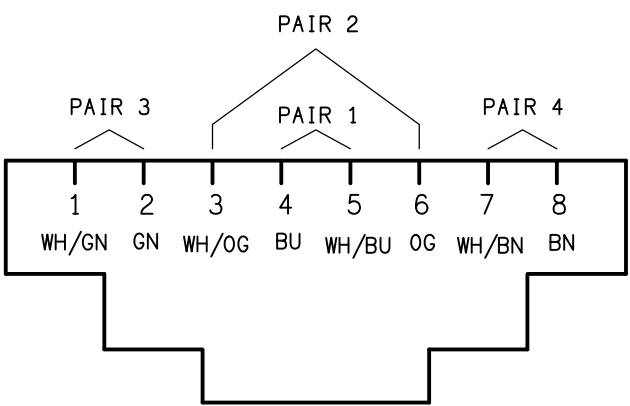
4. AUTHORITIES

ENSURE ALL OF THE ELECTRICAL SERVICES COMPLY WITH THE REQUIREMENTS OF ALL REGULATORY AUTHORITIES HAVING JURISDICTION OVER THE SITE INCLUDING BUT NOT LIMITED TO THE FOLLOWING:

- ACMA.
- LOCAL COUNCIL.
- LOCAL SUPPLY AUTHORITY.
- STATE GOVERNMENT DEPARTMENT OF ENVIRONMENT AND HERITAGE.
- QLD GOVERNMENT, DIVISION OF WORKPLACE, HEALTH AND SAFETY.
- QLD FIRE AND EMERGENCY SERVICES.

LEGEND

	F1: REPLACE THE EXISTING FLUORESCENT PB RECESSED TROFFER WITH A LED FLAT PLATE TROFFER.
	F2: REPLACE THE EXISTING FLUORESCENT T BAR RECESSED TROFFER WITH A LED FLAT PLATE TROFFER.
	F4: REPLACE THE EXISTING FLUORESCENT SURFACE BATTEN C/W NON MAINTAINED AS2293 PACK WITH A LED BATTEN C/W NON MAINTAINED AS2293 PACK.
	F5: REPLACE THE EXISTING FLUORESCENT SURFACE BATTEN WITH A LED BATTEN.
	D1: REPLACE THE EXISTING AMENITY / CIRCULATION FLUORESCENT RECESSED DOWNLIGHT WITH A LED RECESSED DOWNLIGHT.
	D2: REPLACE THE EXISTING SALES FLUORESCENT RECESSED DOWNLIGHT WITH A LED RECESSED DOWNLIGHT.
	D5: REPLACE THE EXISTING EXTERNAL SOFFIT FLUORESCENT RECESSED DOWNLIGHT WITH A LED RECESSED DOWNLIGHT.
	D6: REPLACE THE EXISTING DRIVE THROUGH FLUORESCENT RECESSED DOWNLIGHT WITH A LED RECESSED DOWNLIGHT.
	W2: REPLACE THE EXISTING EXTERNAL FLUORESCENT WALL LIGHT WITH A LED WALL LIGHT.



SCHEMATIC

RJ45 PINOUT CONFIGURATION  
NOT TO SCALE

NOTES

5. CABLES

UNLESS OTHERWISE SPECIFIED, INSTALL AND TERMINATE CABLES IN ACCORDANCE WITH THE MANUFACTURERS' RECOMMENDATIONS. DETERMINE THE FINAL ROUTES TO SUIT THE BUILDING STRUCTURE AND SITE CONDITIONS. UNLESS NOTED OTHERWISE, PROVIDE ALL 240 VOLT POWER AND LIGHTING WIRING AS 2.5mm² TWIN & EARTH STRANDED COPPER CONDUCTORS, PVC INSULATED 0.6/1kV V75 GRADE TO AS3174, PROTECTED BY A 20 AMP CIRCUIT BREAKER. ALL CONDUIT AND FITTINGS TO BE RIGID UPVC TO AS2053, UNLESS NOTED OTHERWISE.

6. POWER DISTRIBUTION

THE POWER DISTRIBUTION COMPONENT OF THIS CONTRACT INCLUDES THE MODIFICATION AND NEW CIRCUITS TO DB-K.

IT IS ACCEPTABLE TO UTILISE THE EXISTING CIRCUITS RETAINED OR REDUNDANT TO SUPPLY THE NEW OUTLETS IF THEY HAVE SUFFICIENT CAPACITY AND COMPLY WITH THE CURRENT VERSION OF AS3000.

ALL OF THE EXISTING CIRCUITS, CABLING AND OUTLETS THAT BECOME REDUNDANT ARE TO BE REMOVED.

ANY INTERRUPTION TO THE POWER SUPPLY TO ANY SERVICES OUTSIDE OF THE AREA OF WORKS MUST BE RESTRICTED TO OUTSIDE OF THE VENUES OPERATING HOURS AND MUST BE ADVISED TO THE OPERATOR IN WRITING TWO WEEKS PRIOR.

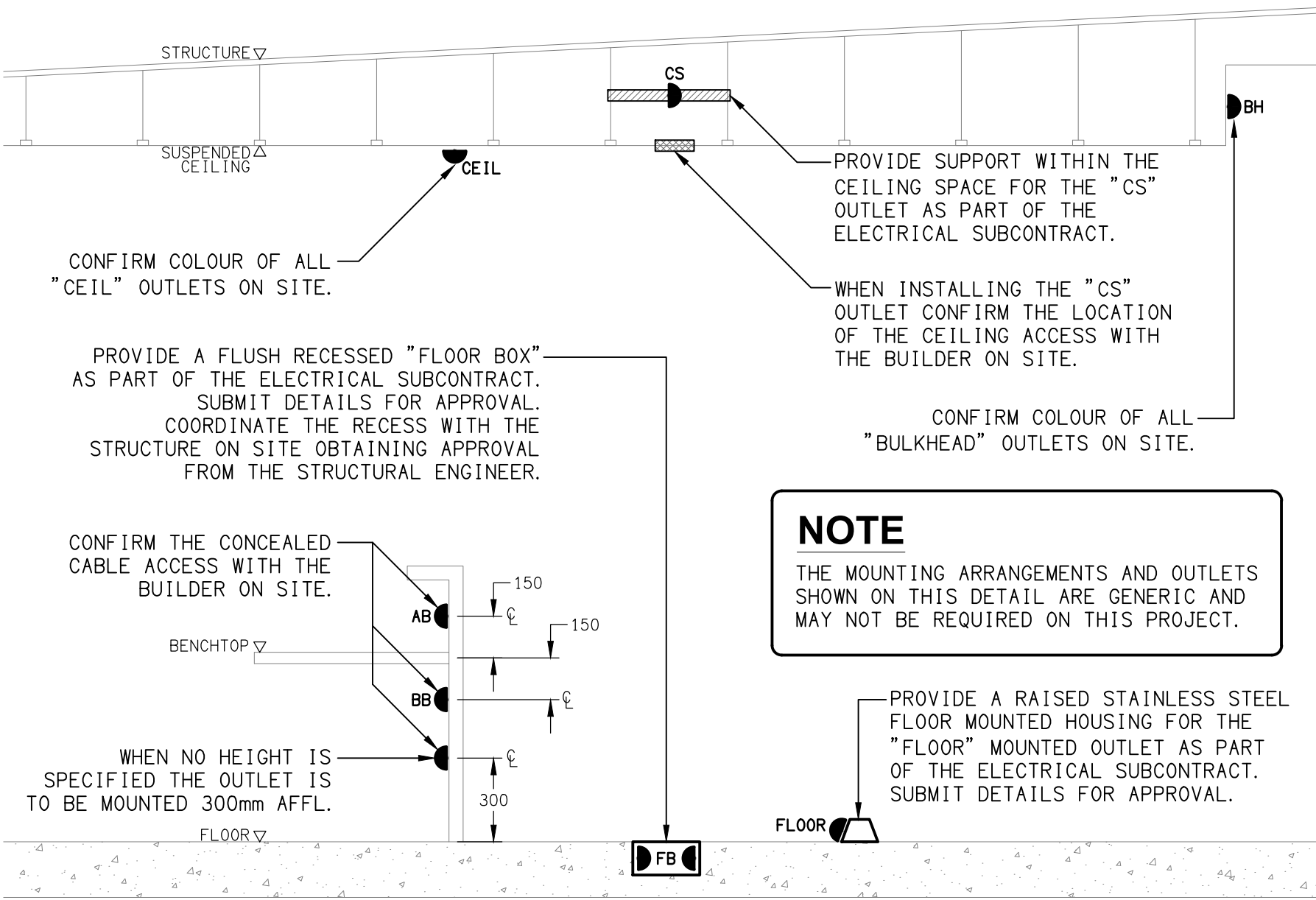
THE POWER DISTRIBUTION COMPONENT OF THIS CONTRACT INCLUDES, BUT IS NOT LIMITED TO THE FOLLOWING EXTENT OF WORK:

- POWER DISTRIBUTION.
- DB-A MODIFICATIONS AND UPGRADES.
- CABLE ACCESS WAYS.
- CIRCUITS.
- ISOLATORS AND OUTLETS.
- FLOOR BOXES.
- TESTING AND COMMISSIONING.
- REMOVAL OF ALL EXISTING REDUNDANT SERVICES.
- RECONNECTION OF ALL EXISTING SERVICES THAT REMAIN.

7. LIGHTING

ALL OF THE LIGHT FITTINGS, LAMPS AND ACCESSORIES ARE TO BE PROVIDED AS PART OF THIS CONTRACT. THE EXISTING FITTINGS ARE TO BE REPLACED WITH 50,000 HOUR SOLID STATE LED FITTINGS. THE LIGHTING COMPONENT OF THIS CONTRACT INCLUDES, BUT IS NOT LIMITED TO THE FOLLOWING EXTENT OF WORK:

- LIGHTING.
- LIGHT FITTINGS AND ACCESSORIES.
- EMERGENCY AND EXIT LIGHTING.
- EARTHING OF THE LIGHTING INSTALLATION.
- LIGHTING CONTROL.
- LIGHTING SUBCIRCUITS.
- TESTING AND COMMISSIONING.
- RECONNECTION OF THE EXISTING LIGHTING THAT REMAINS.
- REMOVAL OF ALL EXISTING REDUNDANT LIGHTING SERVICES.



DETAIL

TYPICAL OUTLET MOUNTINGS  
NOT TO SCALE

NOTES

8. COMMUNICATIONS CABLING

THE COMMUNICATIONS CABLING COMPONENT OF THIS CONTRACT INCLUDES PROVIDING ADDITIONAL CAT 6 COMMUNICATIONS OUTLETS SUPPLIED FROM CR-K.

ANY INTERRUPTION TO THE VENUES COMMUNICATIONS SERVICES OUTSIDE OF THE AREA OF WORKS MUST BE RESTRICTED TO OUTSIDE OF THE VENUES OPERATING HOURS AND MUST BE ADVISED TO THE OPERATOR IN WRITING TWO WEEKS PRIOR.

THE COMMUNICATIONS CABLING COMPONENT OF THIS CONTRACT INCLUDES, BUT IS NOT LIMITED TO THE FOLLOWING EXTENT OF WORK:

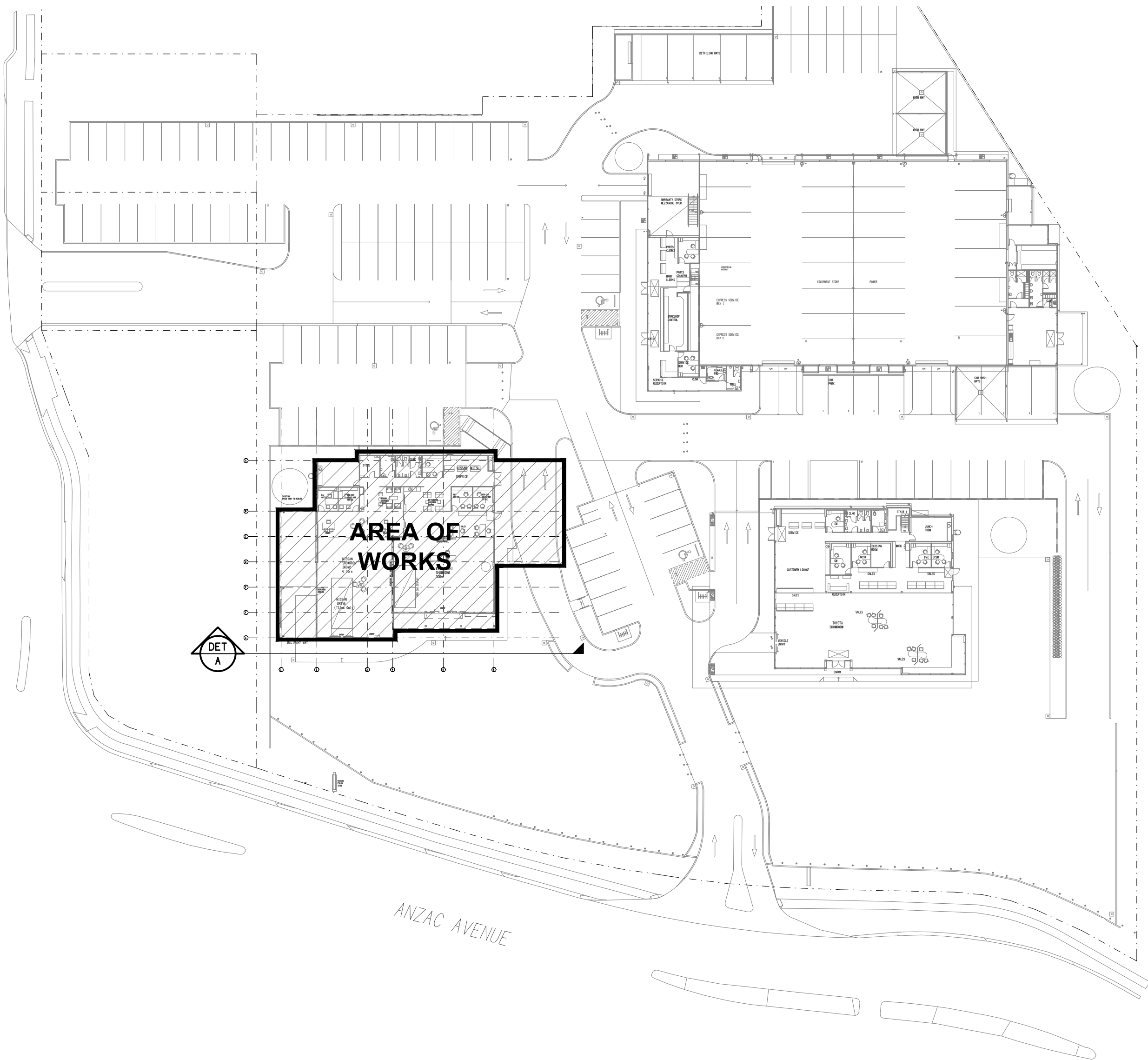
- PATCH PANELS IN CR-K AS NECESSARY.
- CAT 6 COMMUNICATIONS OUTLETS AND CABLING.
- CABLE ACCESS WAYS.
- TESTING AND COMMISSIONING.
- REMOVAL OF ALL EXISTING COMMUNICATIONS CABLING MADE REDUNDANT BY THE WORKS.

9. ABBREVIATIONS

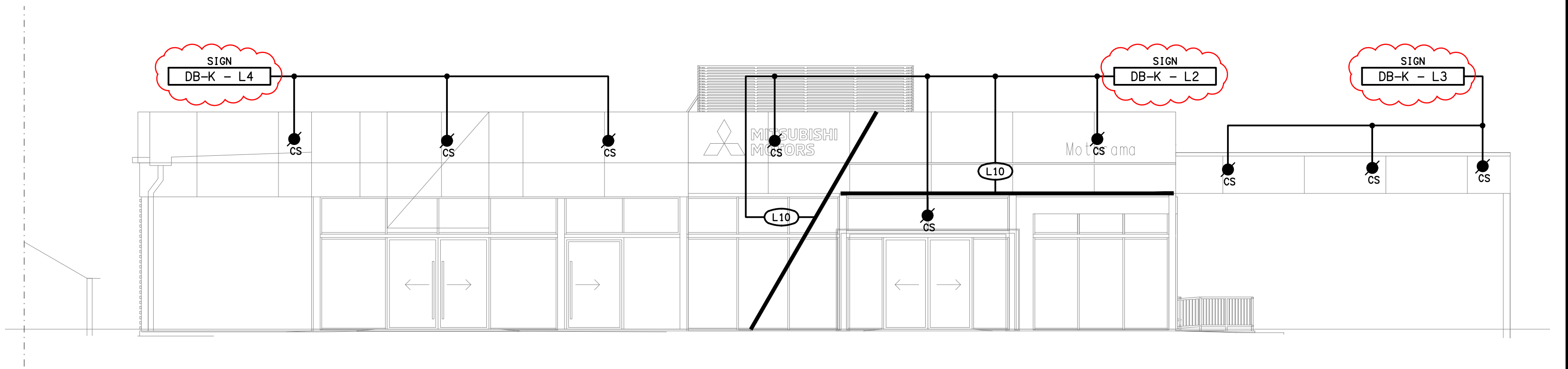
- A - AMP CURRENT RATING
- AB - MOUNT ABOVE BENCH.
- AD - AUTO DOOR.
- AFFL - ABOVE FINISHED FLOOR LEVEL.
- BB - MOUNT BELOW BENCH.
- BH - MOUNT ON BULKHEAD.
- CEIL - MOUNT ON CEILING.
- CS - MOUNT WITHIN CEILING SPACE.
- C/W - COMPLETE WITH.
- EXIST - EXISTING OUTLET.
- HWS - HOT WATER SYSTEM.
- MCB - MINIATURE CIRCUIT BREAKER.
- N - NEON / LED INDICATOR WHEN ON.
- NTS - NOT TO SCALE.
- RCBO - CIRCUIT BREAKER C/W AN INTEGRAL 30ma RESIDUAL CURRENT DEVICE.
- RCD - CIRCUIT PROTECTED VIA A 30ma RESIDUAL CURRENT DEVICE.
- REF - REFRIGERATOR.
- RK - RECESS KIT.
- UNO - UNLESS NOTED OTHERWISE.
- WP - WEATHERPROOF TO IP56 UNO.
- 500 - NUMBER DENOTES MOUNTING HEIGHT AFFL.

<div>ELECTRICAL DESIGN GROUP BRISBANE PTY LTD ACN 092 710 793</div> <div>TRADING AS: ELECTRICAL DESIGN GROUP</div>	<div>THE COPYRIGHT OF THIS DRAWING REMAINS THE PROPERTY OF THE ELECTRICAL DESIGN GROUP.</div>	<div> <b>ELECTRICAL DESIGN GROUP</b> ELECTRICAL BUILDING SERVICES CONSULTANTS BRISBANE GOLD COAST</div> <div>P.O.Box 15, Sherwood Q.4075 Phone: (07) 3278 4375 Email: brisbane@edg.net.au Web: www.edg.net.au</div>	<div>PROJECT: MOTORAMA - HILLCREST NISSAN</div>	<div>DRAWING: <b>ELECTRICAL SERVICES</b> LEGEND, SCHEMATICS &amp; DETAILS</div>		
	<div>USE FIGURED DIMENSIONS IN PREFERENCE TO SCALE.</div>					
	<div>ALL DIMENSIONS TO BE VERIFIED ONSITE.</div>					
	<div>74 ANZAC AVENUE, HILLCREST</div>					
	<div>SCALE: NOT TO SCALE AT A1</div>			<div>PROJECT NO: <b>C3316a</b></div>	<div>DRAWING NO: <b>E01</b></div>	<div>REVISION: <b>D</b></div>





**SITE PLAN**  
NISSAN BUILDING REFURBISHMENT  
SCALE 1: 500



**DETAIL A**  
NISSAN BUILDING ELEVATION  
SCALE 1: 100

ELECTRICAL DESIGN GROUP BRISBANE  
PTY LTD  
ACN 092 710 793

TRADING AS:  
ELECTRICAL DESIGN GROUP

THE COPYRIGHT OF THIS DRAWING  
REMAINS THE PROPERTY OF THE  
ELECTRICAL DESIGN GROUP.

USE FIGURED DIMENSIONS  
IN PREFERENCE TO SCALE.

ALL DIMENSIONS TO BE  
VERIFIED ONSITE.

ELECTRICAL DESIGN GROUP

ELECTRICALBUILDINGSERVICESCONSULTANTS

BRISBANEGOLD COAST

P.O.Box 15, Sherwood Q.4075  
Phone: (07) 3278 4375  
Email: brisbane@edg.net.au  
Web: www.edg.net.au

PROJECT:  
MOTORAMA - HILLCREST NISSAN

74 ANZAC AVENUE, HILLCREST

SCALE:  
AS SHOWN

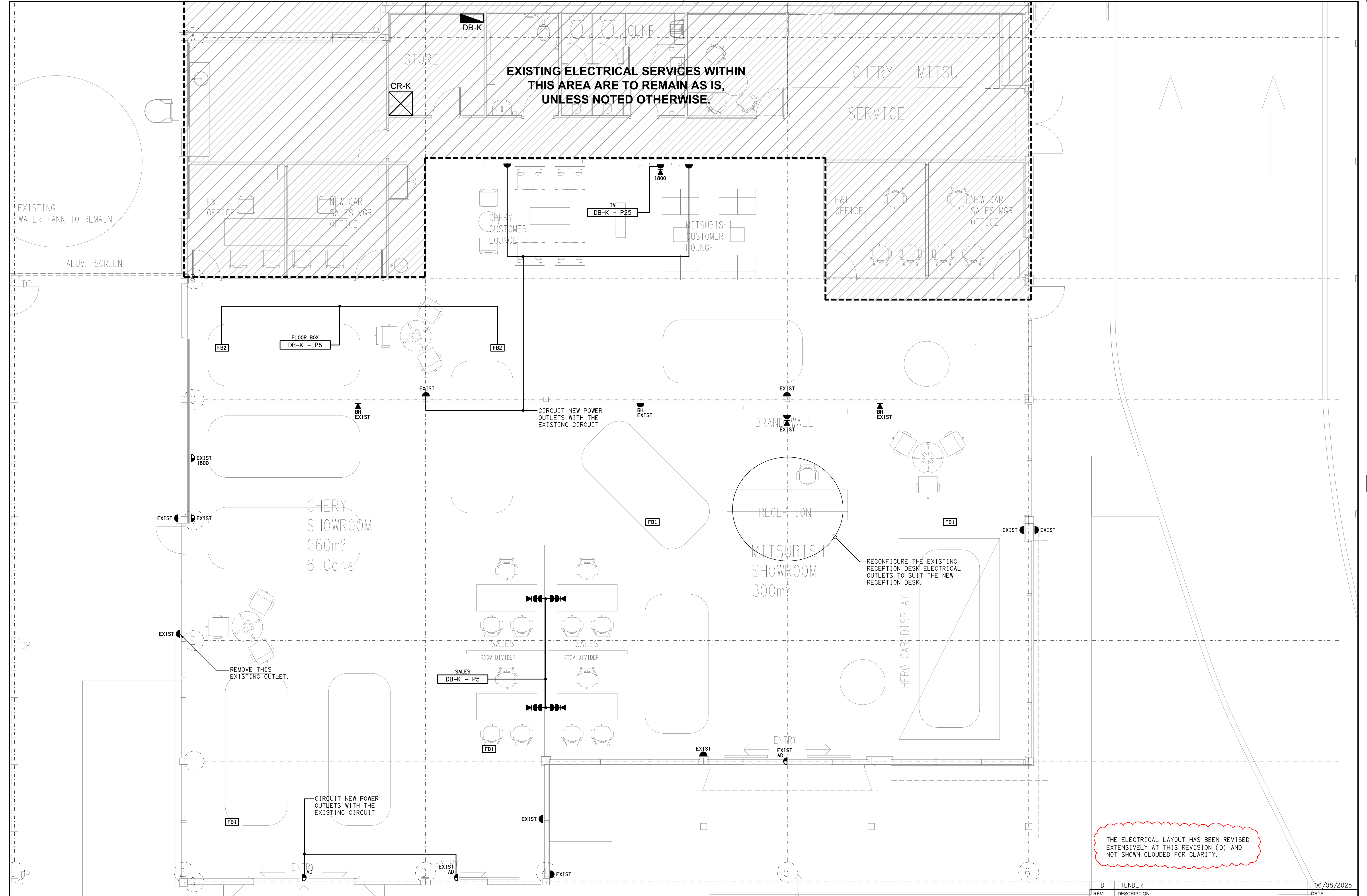
AT A1

PROJECT NO:  
C3316a

DRAWING NO:  
E02

REVISION:  
C

DRAWING:  
ELECTRICAL SERVICES  
SITE PLAN & ELEVATION



THE ELECTRICAL LAYOUT HAS BEEN REVISED  
EXTENSIVELY AT THIS REVISION (D) AND  
NOT SHOWN CLOUDED FOR CLARITY.









**NOTE:**  
THE LIGHT FITTINGS SHOWN ON THIS  
DRAWING ARE FOR INFORMATION PURPOSES  
ONLY. CONFIRM THE FITTING TYPES ON SITE.