



ELECTRICAL DESIGN GROUP

ELECTRICAL BUILDING SERVICES CONSULTANTS

P.O. Box 15, SHERWOOD Q. 4075

Phone: (07) 3278 4375

Website: www.edg.net.au Email: brisbane@edg.net.au

C3379a - THE LION RICHLANDS - CARPARK UPGRADE
ELECTRICAL SERVICES CONTRACT DOCUMENT SCHEDULE
REVISION H - 17 OCTOBER 2025

C3379a-0001(H).xls

ISSUING INFORMATION				DATE OF ISSUE							
	DAY	25	25	14	02	26	20	20	20		
	MONTH	10	01	02	04	05	06	06	10		
	YEAR	24	25	25	25	25	25	25	25		
	REASON FOR ISSUE	P	N	P	A	A	C	C	C		
A = APPROVAL		C = CONSTRUCTION		N = COORDINATION		P = PRELIMINARY		T = TENDER			

DISTRIBUTION	NUMBER OF COPIES							
WWW.EDG.NET.AU	1E	1E	1E	1E	1E	1E	1E	1E
CAYAS & WARD ARCHITECTS	1E	1E	1E	1E	1E	1E	1E	1E
THE LION RICHLANDS					1E	1E	1E	
WIRE-NOT ELECTRICAL					1E	1E	1E	1E
P = PRINT T = TRACING D = DISC E = EMAIL F = FAX								

DOCUMENTS		REVISION							
C3379a-E01.dwg	LEGEND & LOCATION PLAN	A	B	C	D		E		
C3379a-E02.dwg	CARPARK PLAN	A	B	C	D		E		
C3379a-E03.dwg	FIRE TANK ENCLOSURE PLANS		A	B	C		D	E	
C3379a-E04.dwg	MDB-1 & CABLE ACCESS PLANS		A	B	C		D		
C3379a-E05.dwg	POWER SCHEMATICS		A	B	C	D	E		
C3379a-E06.dwg	SWITCHBOARD LOCATIONS		A	B	C		D		E
C3379a-E07.dwg	NOTES 1		A	B	C		D		
C3379a-E08.dwg	NOTES 2		A	B	C		D		
C3379a-0001.xls	CONTRACT DOCUMENT SCHEDULE	A	B	C	D	E	F	G	H
C3379a-0002.xls	EQUIPMENT SCHEDULE			A					
C3379a-0004.xls	DISTRIBUTION BOARD DB-M SCHEDULE			A					B
C3379a-0005.xls	DISTRIBUTION BOARD DB-T SCHEDULE			A				B	
C3379a-0006.xls	DISTRIBUTION BOARD DB-ED SCHEDULE			A					



ELECTRICAL DESIGN GROUP

ELECTRICAL BUILDING SERVICES CONSULTANTS

P.O. Box 15, SHERWOOD Q. 4075

Phone: (07) 3278 4375 Fax: (07) 3716 0222

Web Site: www.edg.net.au Email: brisbane@edg.net.au

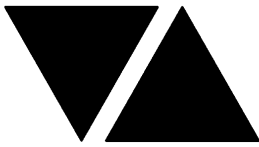
C3379a - THE LION RICHLANDS - CARPARK UPGRADE

C3379a-0002(A).xls

ELECTRICAL EQUIPMENT SCHEDULE

REVISION A - 14 FEBRUARY 2025

THE EQUIPMENT SUPPLIER CONTACT DETAILS MAY BE AVAILABLE ON THE EDG WEBSITE VIA THE FOLLOWING LINK www.edg.net.au/links.html					
TYPE	LAMPS	DESCRIPTION	COLOUR / ACCESSORY	CATALOGUE No	REV
L1	36W LED 4000K	1200 LONG SURFACE MOUNTED IP65 DIFFUSED BATTEN C/W INTEGRAL ELECTRONIC CONTROL GEAR AND PRESENCE DETECTION SENSOR	LIGHT GREY	GAMMA ILLUMINATION STORM 1558-CCT-36W-MS	A
L2	20W LED 4000K	600 LONG SURFACE MOUNTED IP65 DIFFUSED BATTEN C/W INTEGRAL ELECTRONIC CONTROL GEAR AND PRESENCE DETECTION SENSOR	LIGHT GREY	GAMMA ILLUMINATION STORM 1557-CCT-20W-4K-MS	A
L3	100W 4000K LED	WALL MOUNTED CARPARK LIGHT C/W INTEGRAL DRIVER MOUNT THE FITTING AS HIGH AS PRACTICAL	BLACK FITTING	MELEC ML-ROX-100-4K-BK	A
GL01	8.5W 3000K LED	120 DIA 850 HIGH BOLLARD C/W INTEGRAL DRIVER AND A REINFORCED CONCRETE FOOTING. CONFIRM THE FINAL POSITION AND ORIENTATION ON SITE WITH THE ARCHITECT.	BLACK	LIGHTING COLLECTIVE SLEEK BOLLARD LIGHT	A
GL02	3W 3000K LED	600 HIGH GARDEN LIGHT C/W REMOTE DRIVER AND A REINFORCED CONCRETE FOOTING. CONFIRM THE FINAL POSITION AND ORIENTATION ON SITE WITH THE ARCHITECT. LOCATE THE DRIVERS WITHIN AN ADJACENT GL01 FITTING OR IN AN ADJACENT LIGHT POLE. NOT THE DRIVER POSITION ON THE AS CONSTRUCTED DOCUMENTS. IT IS ACCEPTABLE TO SUPPLY MULTIPLE GL02 FITTINGS FROM A SUITABLE SIZED DRIVER.	BLACK	NOCTURNAL LIGHTING BEETLE NL0070 PB-D-30-SP6-3W-4	A
GL03	33W RGB LED	PLINTH MOUNTED ADJUSTABLE RGB TREE LIGHT. PROVIDE THE FITTING WITH A REINFORCED CONCRETE FOOTING / PLINTH PROVIDED A PROGRAMMABLE CONTROLLER LOCATED WITHIN THE TANK ROOM TO CONTROL THE GL03 FITTING. ENSURE THE CONTROLLER CAN GROUP ALL OF THE GL03 FITTINGS AS WELL AS CONTROL EACH GL03 FITTING INDIVIDUALLY. CONFIRM THE FINAL POSITION AND ORIENTATION ON SITE WITH THE ARCHITECT. IN ADDITION TO THE SPECIFIED WORKS, PROVIDE A PC SUM OF \$1,000.00 PLUS GST FOR EACH GL03 FITTING TO SUPPLY EACH GL03 WITH ADDITIONAL ACCESSORIES POST PRACTICAL COMPLETION.	BLACK	PHILIPS COLOURBURST RGBW POWERCORE GEN2	A
LP01	50W 4000K LED	9M POLE AND CARPARK LIGHT C/W INTEGRAL DRIVER ALL CONDUITS ARE TO HAVE A SPARE DRAW WIRE AND BE SHOWN ON THE AS CONSTRUCTED DOCUMENTS.	BLACK FITTING BLACK POLE	MELEC ML-ROX-50-4K-BK	A
LP02	50W 4000K LED	9M POLE AND CARPARK LIGHT C/W INTEGRAL DRIVER ALL CONDUITS ARE TO HAVE A SPARE DRAW WIRE AND BE SHOWN ON THE AS CONSTRUCTED DOCUMENTS.	BLACK FITTING BLACK POLE	MELEC ML-ROX-50-4K-BK	A
LP03	100W 4000K LED	9M POLE AND CARPARK LIGHT C/W INTEGRAL DRIVER ALL CONDUITS ARE TO HAVE A SPARE DRAW WIRE AND BE SHOWN ON THE AS CONSTRUCTED DOCUMENTS.	BLACK FITTING BLACK POLE	MELEC ML-ROX-100-4K-BK	A



ELECTRICAL DESIGN GROUP

ELECTRICAL BUILDING SERVICES CONSULTANTS

P.O. Box 15, SHERWOOD Q. 4075

Phone: (07) 3278 4375 Fax: (07) 3716 0222

Web Site: www.edg.net.au Email: brisbane@edg.net.au

C3379a - THE LION RICHLANDS - CARPARK UPGRADE

C3379a-0002(A).xls

ELECTRICAL EQUIPMENT SCHEDULE

REVISION A - 14 FEBRUARY 2025

THE EQUIPMENT SUPPLIER CONTACT DETAILS MAY BE AVAILABLE ON THE EDG WEBSITE VIA THE FOLLOWING LINK www.edg.net.au/links.html					
TYPE	LAMPS	DESCRIPTION	COLOUR / ACCESSORY	CATALOGUE No	REV
EX	LED	EXIT LIGHT: MAINTAINED WEATHER PROOF 24M VIEWING DISTANCE EXIT LIGHT C/W DIFFUSERS & DIRECTIONAL ARROWS AS SHOWN. CEILING OR WALL MOUNT BETWEEN 2100mm & 2700mm AFFL IF THERE IS NO VERTICAL SURFACE TO MOUNT THE FITTING ON WITHIN THIS RANGE CONFIRM THE MOUNTING HEIGHT WITH THE ENGINEER. AS2293 CLASSIFICATION C0-D1.25- C90-D2	WHITE	CLEVERTRONICS LWELED	A
EMERGENCY PACK		LIGHT FITTINGS THAT ARE DESIGNATED AS BEING PROVIDED WITH AN EMERGENCY PACK ARE TO BE PROVIDED WITH AN INTEGRAL AS2293 EMERGENCY PACK. THE FITTINGS ARE TO BE NON MAINTAINED WITH ALL LAMPS SWITCHED AS PER THE LIGHTING CONTROL FOR THAT SPACE UNLESS NOTED OTHERWISE. REFER TO THE SPECIFICATION FOR FURTHER DETAILS OF THE CONFIGURATION AND SWITCHING OF EMERGENCY LIGHTS.			A
SPECIAL PURPOSE POWER OUTLET		SPECIAL PURPOSE POWER OUTLET. MOUNT AT 300mm AFFL U.N.O. RATING 10A U.N.O. SIZE AND TYPE AS NOTED	-	-	A
SINGLE POWER OUTLET		SINGLE POWER OUTLET C/W CIRCUIT IDENTIFICATION ON THE FACEPLATE BEHIND THE SURROUND MOUNT AT 300 AFFL U.N.O.	WHITE	CLIPSAL C2000 SERIES	A
DOUBLE POWER OUTLET		DOUBLE POWER OUTLET C/W CIRCUIT IDENTIFICATION ON THE FACEPLATE BEHIND THE SURROUND MOUNT AT 300 AFFL U.N.O.	WHITE	CLIPSAL C2000 SERIES	A
WEATHERPROOF POWER OUTLET (WP)		IP54 WEATHERPROOF SINGLE / DOUBLE POWER OUTLET AS NOTED ON DRAWING C/W COVER FLAP OVER SOCKET. MOUNT AT MINIMUM 1100mm AFFL U.N.O. RATING 10A U.N.O.	-	CLIPSAL WSCF227F	A
SIGN CONNECTION		COORDINATE THE LOCATION AND CONNECTION WITH THE SIGN CONTRACTOR ENSURING THE GPO / ISOLATORS ARE PROVIDED WITH APPROPRIATE WEATHER PROTECTION AND ARE CONCEALED FROM VIEW.			A
SINGLE-PHASE ISOLATOR		SINGLE-PHASE WEATHERPROOF ISOLATOR. MOUNT AT 1350mm AFFL U.N.O. RATING 20A U.N.O. CONNECT TO EQUIPMENT VIA FLEXIBLE CONDUIT.	-	CLIPSAL WHT20	A
THREE-PHASE ISOLATOR		THREE-PHASE WEATHERPROOF ISOLATOR. MOUNT AT 1350mm AFFL U.N.O. RATING 20A U.N.O. CONNECT TO EQUIPMENT VIA FLEXIBLE CONDUIT. "RSD" DENOTES ROLLER SHUTTER DOOR SUPPLY - COORDINATE LOCATION ONSITE WITH MOTOR.	-	CLIPSAL WHT35	A
FIRE INDICATOR PANEL (FIP)		EXISTING AS 1670.1 FIRE INDICATOR PANEL TO BE UPGRADED AS NECESSARY TO ACCOMMODATE TH PROPOSED WORKS INCLUDING A NEW ZONE PLAN RESUPPLY THE EXISTING FIP FROM THE NEW MDB-1			A
FIRE EVACUATION HORN		SURFACE MOUNTED TWO-TONE 30W ALERT AND EVACUATION HORN SPEAKER TO AS1670.1 C/W 100V MULTI-TAP TRANSFORMER. MOUNT AT HIGH LEVEL.			A



ELECTRICAL DESIGN GROUP

ELECTRICAL BUILDING SERVICES CONSULTANTS

P.O. Box 15, SHERWOOD Q. 4075

Phone: (07) 3278 4375 Fax: (07) 3716 0222

Web Site: www.edg.net.au Email: brisbane@edg.net.au

C3379a - THE LION RICHLANDS - CARPARK UPGRADE

C3379a-0002(A).xls

ELECTRICAL EQUIPMENT SCHEDULE

REVISION A - 14 FEBRUARY 2025

THE EQUIPMENT SUPPLIER CONTACT DETAILS MAY BE AVAILABLE ON THE EDG WEBSITE VIA THE FOLLOWING LINK www.edg.net.au/links.html					
TYPE	LAMPS	DESCRIPTION	COLOUR / ACCESSORY	CATALOGUE No	REV
SMOKE DETECTOR		SURFACE MOUNTED SMOKE DETECTOR TO AS1670.1			A
THERMAL DETECTOR		SURFACE MOUNTED THERMAL DETECTOR TO AS1670.1			A
COMMUNICATIONS RACK T (CR-T)		PROVIDE THE COMMUNICATIONS RACK T AS A HINGED WALL MOUNTED 12RU 600 DEEP RACK C/W VENTILATED TOP BOTTOM AND SIDE PANELS AS WELL AS A LOCKABLE CLEAR DOOR AND A 6 PORT POWER RAIL. PROVIDE A FOBOT AS PER THE NOTES. MOUNT THE RACK OVER THE ASSOCIATED GPO AT HIGH LEVEL.			A
PIT 1		PROVIDE A REINFORCED MASONRY INSITU PIT / TRENCH BELOW THE MDB-1 FOR THE FULL LENGTH AND WIDTH OF THE MDB-1 AS PER THE MDB-1 ROOM SECTION DETAIL. PROVIDE AS PART OF THE ELECTRICAL WORKS THE SWITCHBOARD AND LID SUPPORT SYSTEM AND THE TRENCH LIDS. PROVIDE THE STRUCTURAL SUPPORT SYSTEM AS HOT DIPPED GALVANISED STEEL. PROVIDE THE TRENCH LIDS AS SEALED / PAINTED 25MM THICK MARINE GRADE PLY WITH LIFTING HOLES WITH EACH PART NO HEAVIER THAN 20 kg. PROVIDE THE TRENCH WITH AN AUTOMATIC SUMP PUMP TO DRAIN TO THE STORMWATER SYSTEM. PROVIDE CABLE SUPPORTS WITHIN THE TRENCH TO ENSURE THAT THERE ARE NO CABLES WITHIN 50MM OF THE TRENCH FLOOR. PROVIDE SHOP DRAWINGS OF THE PIT, THE LID AND SUPPORT SYSTEM FOR APPROVAL.			A
PIT 2		PROVIDE A REINFORCED MASONRY INSITU PIT WITH A MINIMUM CLEAR INTERNAL DIMENSION OF 2,400 X 2,400 X 900 DEEP. PROVIDE THE PIT WITH A PROPRIETARY INLAY CLASS C LID AND LID SUPPORT SYSTEM. INFILL THE LID TO MATCH THE ADJACENT SURROUNDING HARDSCAPE FINISH. PROVIDE THE PIT WITH A DRAIN TO THE STORMWATER SYSTEM. PROVIDE CABLE SUPPORTS WITHIN THE PIT TO ENSURE THAT THERE ARE NO CABLES WITHIN 50MM OF THE PIT FLOOR. PROVIDE SHOP DRAWINGS OF THE PIT, THE LID AND SUPPORT SYSTEM FOR APPROVAL.			A
PIT 3		PROVIDE A REINFORCED MASONRY INSITU PIT WITH A MINIMUM CLEAR INTERNAL DIMENSION OF 2,400 X 2,400 X 900 DEEP. PROVIDE THE PIT WITH A PROPRIETARY INLAY CLASS C LID AND LID SUPPORT SYSTEM. INFILL THE LID TO MATCH THE ADJACENT SURROUNDING HARDSCAPE FINISH. PROVIDE THE PIT WITH A DRAIN TO THE STORMWATER SYSTEM. PROVIDE CABLE SUPPORTS WITHIN THE PIT TO ENSURE THAT THERE ARE NO CABLES WITHIN 50MM OF THE PIT FLOOR. PROVIDE SHOP DRAWINGS OF THE PIT, THE LID AND SUPPORT SYSTEM FOR APPROVAL.			A
PIT 4		PROVIDE A REINFORCED MASONRY INSITU PIT WITH A MINIMUM CLEAR INTERNAL DIMENSION OF 1,200 X 1,200 X 900 DEEP. PROVIDE THE PIT WITH A PROPRIETARY INLAY CLASS C LID AND LID SUPPORT SYSTEM. INFILL THE LID TO MATCH THE ADJACENT SURROUNDING HARDSCAPE FINISH. PROVIDE THE PIT WITH A DRAIN TO THE STORMWATER SYSTEM. PROVIDE CABLE SUPPORTS WITHIN THE PIT TO ENSURE THAT THERE ARE NO CABLES WITHIN 50MM OF THE PIT FLOOR. PROVIDE SHOP DRAWINGS OF THE PIT, THE LID AND SUPPORT SYSTEM FOR APPROVAL. CONNECT THE PIT TO THE GENERATOR VIA UNDERGROUND CONDUITS.			A
PIT 5		PROVIDE PIT 5 AS A POWER PIT AND A COMMUNICATIONS PIT. PROVIDE THE POWER PIT AS 600 X 600 CLEAR INTERNAL X 900 DEEP PLASTIC POWER PIT C/W A REINFORCED CONCRETE SURROUND AND A CLASS B STEEL LID WITH A SLIP RESISTANCE OF R10. PROVIDE THE COMMUNICATIONS PIT AS 350 X 350 CLEAR INTERNAL X 700 DEEP PLASTIC POWER PIT C/W A REINFORCED CONCRETE SURROUND AND A CLASS B STEEL LID WITH A SLIP RESISTANCE OF R10. PROVIDE THE POWER PIT LID WITH A PERMANENT LABEL ELECTRICITY THE COMMUNICATIONS PIT LID WITH A PERMEANT LABEL "COMMUNICATIONS". SUBMIT DETAILS OF THE PITS, LIDS, LABELS AND AN INSTALLATION SECTION FOR APPROVAL.			A



ELECTRICAL DESIGN GROUP

ELECTRICAL BUILDING SERVICES CONSULTANTS

P.O. Box 15, SHERWOOD Q. 4075

Phone: (07) 3278 4375 Fax: (07) 3716 0222

Web Site: www.edg.net.au Email: brisbane@edg.net.au

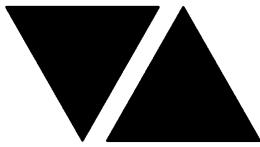
C3379a - THE LION RICHLANDS - CARPARK UPGRADE

C3379a-0002(A).xls

ELECTRICAL EQUIPMENT SCHEDULE

REVISION A - 14 FEBRUARY 2025

THE EQUIPMENT SUPPLIER CONTACT DETAILS MAY BE AVAILABLE ON THE EDG WEBSITE VIA THE FOLLOWING LINK www.edg.net.au/links.html					
TYPE	LAMPS	DESCRIPTION	COLOUR / ACCESSORY	CATALOGUE No	REV
PIT 6		PROVIDE PIT 6 AS A POWER PIT AND A COMMUNICATIONS PIT. PROVIDE THE POWER PIT AS 450 X 450 CLEAR INTERNAL X 700 DEEP PLASTIC POWER PIT C/W A REINFORCED CONCRETE SURROUND AND A CLASS B STEEL LID WITH A SLIP RESISTANCE OF R10. PROVIDE THE COMMUNICATIONS PIT AS 350 X 350 CLEAR INTERNAL X 700 DEEP PLASTIC POWER PIT C/W A REINFORCED CONCRETE SURROUND AND A CLASS B STEEL LID WITH A SLIP RESISTANCE OF R10. PROVIDE THE POWER PIT LID WITH A PERMANENT LABEL ELECTRICITY THE COMMUNICATIONS PIT LID WITH A PERMEANT LABEL "COMMUNICATIONS". SUBMIT DETAILS OF THE PITS, LIDS, LABELS AND AN INSTALLATION SECTION FOR APPROVAL.			A
METER BOARD / MSB		NEW QECM V4 COMPLIANT METER BOARD / SITE MSB TO BE SUPPLIED FROM THE EXISTING ENERGEX PADMOUNT SUBSTATION.. REFER TO THE NOTES AND POWER SCHEMATIC			A
MDB-1		NEW BUILDING MAIN DISTRIBUTION BOARD 1 TO BE SUPPLIED FROM THE NEW METER BOARD / SITE MSB. REFER TO THE NOTES AND POWER SCHEMATIC			A
MDB-2		EXISTING BUILDING MAIN DISTRIBUTION BOARD 2 TO BE UPGRADED AND RESUPPLIED FROM THE NEW MDB-1. REFER TO THE NOTES AND POWER SCHEMATIC			A
DB-K		EXISTING DISTRIBUTION BOARD TO BE RESUPPLIED FROM THE NEW MDB-1			A
DB-G		EXISTING DISTRIBUTION BOARD TO BE RESUPPLIED FROM THE NEW MDB-1			A
MSSB3		EXISTING DISTRIBUTION BOARD TO BE RESUPPLIED FROM THE NEW MDB-1			A
MSSB2		EXISTING DISTRIBUTION BOARD TO BE RESUPPLIED FROM THE NEW MDB-1			A
DB-S		EXISTING DISTRIBUTION BOARD TO BE RESUPPLIED FROM THE NEW MDB-1			A
DB-P		EXISTING DISTRIBUTION BOARD TO BE RESUPPLIED FROM THE NEW MDB-1			A
DB-DS		EXISTING DISTRIBUTION BOARD TO BE RESUPPLIED FROM THE NEW MDB-1			A
DB-T		NEW TANK ROOM DISTRIBUTION BOARD TO BE SUPPLIED FROM THE NEW MDB-1. REFER TO THE DB-T SCHEDULE, NOTES AND POWER SCHEMATIC			A
MSSB T		MECHANICAL SERVICES SWITCHBOARD PROVIDED BY THE MECHANICAL SUB CONTRACTOR. COORDINATE THE SUBMAIN CONNECTION WITH THE MECHANICAL SUB CONTRACTOR ON SITE.			A
DB-M		NEW SWITCHROOM DISTRIBUTION BOARD TO BE SUPPLIED FROM THE NEW MDB-1. REFER TO THE DB-M SCHEDULE, NOTES AND POWER SCHEMATIC			A



ELECTRICAL DESIGN GROUP

ELECTRICAL BUILDING SERVICES CONSULTANTS

P.O. Box 15, SHERWOOD Q. 4075

Phone: (07) 3278 4375 Fax: (07) 3716 0222

Web Site: www.edg.net.au Email: brisbane@edg.net.au

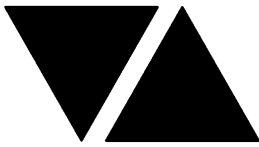
C3379a - THE LION RICHLANDS - CARPARK UPGRADE

C3379a-0002(A).xls

ELECTRICAL EQUIPMENT SCHEDULE

REVISION A - 14 FEBRUARY 2025

THE EQUIPMENT SUPPLIER CONTACT DETAILS MAY BE AVAILABLE ON THE EDG WEBSITE VIA THE FOLLOWING LINK www.edg.net.au/links.html					
TYPE	LAMPS	DESCRIPTION	COLOUR / ACCESSORY	CATALOGUE No	REV
MSSB1		EXISTING DISTRIBUTION BOARD TO BE RESUPPLIED FROM THE NEW MDB-1			A
DB-ED		NEW EXTERNAL DISPLAY DISTRIBUTION BOARD TO BE SUPPLIED FROM DB-S. REFER TO THE DBS-SCHEDULE AND NOTES.			A
DB FIELD 2 LIGHTING		EXISTING DISTRIBUTION BOARD SUPPLIED FROM MDB-2 TO REMAIN AS IS			A
MAIN FIELD TOWERS 1 & 5		EXISTING DISTRIBUTION BOARD SUPPLIED FROM MDB-2 TO REMAIN AS IS			A
SOLAR		EXISTING DISTRIBUTION BOARD SUPPLIED FROM MDB-2 TO REMAIN AS IS			A
DB-FR		EXISTING DISTRIBUTION BOARD TO BE REMAIN AS IS AND BE RESUPPLIED FROM MDB-2. THE EXISTING DB-FR SUBMAINS ARE TO BE REDIRECTED AND EXTENDED AS NECESSARY TO FACILITATE SUPPLYING DB-FR FROM MDB-2.			A
DB-4		EXISTING DISTRIBUTION BOARD TO BE REMAIN AS IS AND BE RESUPPLIED FROM MDB-2. THE EXISTING DB-4 SUBMAINS ARE TO BE REDIRECTED AND EXTENDED AS NECESSARY TO FACILITATE SUPPLYING DB-4 FROM MDB-2.			A
DB-DR		EXISTING DISTRIBUTION BOARD TO BE REMAIN AS IS AND BE RESUPPLIED FROM MDB-2. THE EXISTING DB-DR SUBMAINS ARE TO BE REDIRECTED AND EXTENDED AS NECESSARY TO FACILITATE SUPPLYING DB-DR FROM MDB-2.			A
DB-B		EXISTING DISTRIBUTION BOARD TO BE REMAIN AS IS AND BE RESUPPLIED FROM MDB-2. THE EXISTING DB-B SUBMAINS ARE TO BE REDIRECTED AND EXTENDED AS NECESSARY TO FACILITATE SUPPLYING DB-B FROM MDB-2.			A
LIFT 1		EXISTING LIFT TO BE RESUPPLIED FROM THE NEW MDB-1			A
LIFT 2		EXISTING LIFT TO BE RESUPPLIED FROM THE NEW MDB-1			A
EXISTING MSB		EXISTING SITE MSB AND ALL ASSOCIATED CABLING TO BE REMOVED AS PER THE NOTE.			A
MDB-A		EXISTING BUILDING MAIN DISTRIBUTION BOARD MDB-A AND ALL ASSOCIATED CABLING TO BE REMOVED AS PER THE NOTE.			A
MDB-B		EXISTING BUILDING MAIN DISTRIBUTION BOARD MDB-B AND ALL ASSOCIATED CABLING TO BE REMOVED AS PER THE NOTE.			A
METER 1 (M1)		NEM CODE COMPLIANT QECCM V4 COMPLIANT CT RETAIL METER INCLUDING ALL ASSOCIATED COMPONENTS			A



ELECTRICAL DESIGN GROUP

ELECTRICAL BUILDING SERVICES CONSULTANTS

P.O. Box 15, SHERWOOD Q. 4075

Phone: (07) 3278 4375 Fax: (07) 3716 0222

Web Site: www.edg.net.au Email: brisbane@edg.net.au

C3379a - THE LION RICHLANDS - CARPARK UPGRADE

C3379a-0002(A).xls

ELECTRICAL EQUIPMENT SCHEDULE

REVISION A - 14 FEBRUARY 2025

THE EQUIPMENT SUPPLIER CONTACT DETAILS MAY BE AVAILABLE ON THE EDG WEBSITE VIA THE FOLLOWING LINK www.edg.net.au/links.html					
TYPE	LAMPS	DESCRIPTION	COLOUR / ACCESSORY	CATALOGUE No	REV
METER 2 (M2)		SOLAR CONTROL SYSTEM DEMAND MONITORING METER			A
METER 3 (M3)		GENERATOR CONTROL SYSTEM DEMAND MONITORING METER			A
METER 4 (M4)		FUTURE NEM CODE COMPLIANT QECM V4 COMPLIANT CT RETAIL METER INCLUDING ALL ASSOCIATED COMPONENTS			A
METER 5 (M5)		FUTURE SOLAR CONTROL SYSTEM DEMAND MONITORING METER			A
METER 6 (M6)		FUTURE GENERATOR CONTROL SYSTEM DEMAND MONITORING METER			A
CABLE TRAY		GALVANIZED CABLE TRAY SIZED AS INDICATED COMPLIANT WITH AS1170.4			A



ELECTRICAL DESIGN GROUP

ELECTRICAL BUILDING SERVICES CONSULTANTS

P.O. Box 15, SHERWOOD Q. 4075

Phone: (07) 3278 4375

Website: www.edg.net.au Email: brisbane@edg.net.au

C3379a - THE LION RICHLANDS - CARPARK UPGRADE
DISTRIBUTION BOARD DB-M (MDB-1 SWITCHROOM)
REVISION B - 17 OCTOBER 2025

C3379a-0004(B).xls

FAULT CURRENT: 6KA USING CASCADING							REV
MAIN SWITCH: 250A NON AUTO LOAD BREAK							A
CHASSIS SIZE: 60 POLE							A
SUPPLIED FROM: MDB-1							A
CHASSIS RATING: 250A							A
SUPPLY CABLE: 4C70							A
PHASES: 3							A
PROVIDE THE DB WITH A FULL WIDTH EMPTY DIN RAIL TO ACCOMMODATE FUTURE CONTACTORS AND CONTROLS. PROVIDE THE DB WITH AN AS2293 EMERGENCY LIGHTING CONTROL SYSTEM TO CONTROL THE ASSOCIATED EMERGENCY LIGHTS. PROVIDE THE DB WITH SURGE PROTECTION. REFER TO THE NOTES FOR ADDITIONAL REQUIREMENTS							A
CIRC	PH	CIRCUIT BREAKER (amps)	CONTROL EQUIPMENT	CABLE SIZE (mm ²)	LOCATION	CIRCUIT USE	A
P1	1	20	RCBO	2.5	SWITCHROOM	GPO	A
P2	1	20	RCBO	2.5	SWITCHROOM	FAN	A
P3	1	20	RCBO	2.5	SWITCHROOM	PUMP	A
P4	1	20	RCBO	2.5	SWITCHROOM	GENERATOR BUS REFERENCE VOLTAGE	A
P5	1	20	RCBO	2.5	SWITCHROOM	GENERATOR BATTERY CHARGER	A
P6	1	20	RCBO	2.5	SWITCHROOM	GENERATOR CONTROL SYSTEM UPS	A
P7	1	20	RCBO	2.5	SWITCHROOM	MDB-1 ANTI CONDENSATION HEATERS	A
P8	1	20	RCBO	2.5	SWITCHROOM	RACK	B
							A
							A
							A
							A
L1	1	20	RCBO	2.5	SWITCHROOM	LIGHTS	A
L2	1	20	RCBO PE CELL ON DUSK OFF DAWN	2.5	CARPARK	POLE LIGHTS	A
L3	1	20	RCBO PE CELL ON DUSK OFF DAWN	2.5	CARPARK	SHADE STRUCTURE	A
L4	1	20	RCBO PE CELL ON DUSK OFF DAWN	2.5	CARPARK	BUILDING LIGHTS	A
L5	1	20	RCBO PE CELL ON DUSK OFF DAWN	2.5	CARPARK	POLE LIGHTS	A
							A
							A
							A
							A
							A
							A
							A
							A
							A
							A
							A



ELECTRICAL DESIGN GROUP

ELECTRICAL BUILDING SERVICES CONSULTANTS

P.O. Box 15, SHERWOOD Q. 4075

Phone: (07) 3278 4375

Website: www.edg.net.au Email: brisbane@edg.net.au

C3379a - THE LION RICHLANDS - CARPARK UPGRADE

C3379a-0005(B).xls

DISTRIBUTION BOARD DB-T (TANK ROOM)

REVISION B - 20 JUNE 2025

							REV	
FAULT CURRENT:		6KA USING CASCADING			MAIN SWITCH:		250A NON AUTO LOAD BREAK	A
CHASSIS SIZE:		60 POLES			SUPPLIED FROM:		MDB-1	A
CHASSIS RATING:		250A			SUPPLY CABLE:		4C70	A
PHASES:		3						A
PROVIDE THE DB WITH A FULL WIDTH EMPTY DIN RAIL TO ACCOMMODATE FUTURE CONTACTORS AND CONTROLS. PROVIDE THE DB WITH AN AS2293 EMERGENCY LIGHTING CONTROL SYSTEM TO CONTROL THE ASSOCIATED EMERGENCY LIGHTS. PROVIDE THE DB WITH SURGE PROTECTION. REFER TO THE NOTES FOR ADDITIONAL REQUIREMENTS								A
CIRC	PH	CIRCUIT BREAKER (amps)	CONTROL EQUIPMENT	CABLE SIZE (mm ²)	LOCATION	CIRCUIT USE		
P1	1	20	RCBO	2.5	TANK ROOM	CR-T	A	
P2	3	40		6.0	TANK ROOM	MSSB-T	A	
P3	3	20	RCBO	2.5	TANK ROOM	STORM WATER	A	
P4	1	20	RCBO	2.5	TANK ROOM	GPO	A	
P5	1	20	RCBO	2.5	TANK ROOM	HYD PUMP 1	A	
P6	1	20	RCBO	2.5	TANK ROOM	HYD PUMP 2	A	
P7	3	20	RCBO	2.5	TANK ROOM	HYD JACK 1	A	
P8	3	20	RCBO	2.5	TANK ROOM	HYD JACK 2	A	
P9	1	20	RCBO	2.5	TANK ROOM	SPK PUMP 1	A	
P10	1						B	
P11	3	20	RCBO	2.5	TANK ROOM	SPK JACK 1	A	
P12							B	
L1	1	20	RCBO	2.5	TANK ROOM	LIGHTS	A	
L2	1	20	RCBO PE ON DUSK OFF DAWN	2.5	CARPARK	SHADE SALES	A	
L3	1	20	RCBO PE ON DUSK OFF DAWN	2.5	CARPARK	POLE LIGHTS	A	
L4	1	20	RCBO PE ON DUSK OFF DAWN	2.5	CARPARK	POLE LIGHTS	A	
L5	1	20	RCBO PE ON DUSK OFF DAWN	2.5	CARPARK	POLE LIGHTS	A	
L6	1	20	RCBO PE ON DUSK OFF DAWN	2.5	CARPARK	POLE LIGHTS	A	
L7	1	20	RCBO PE ON DUSK OFF DAWN	2.5	CARPARK	GARDEN LIGHTS	A	
L8	1	20	RCBO PE ON DUSK OFF DAWN	2.5	CARPARK	GARDEN LIGHTS	A	

C3379a-0005(B).xls

Pages inc. any attach. 1 of 1



ELECTRICAL DESIGN GROUP

ELECTRICAL BUILDING SERVICES CONSULTANTS

P.O. Box 15, SHERWOOD Q. 4075

Phone: (07) 3278 4375

Website: www.edg.net.au Email: brisbane@edg.net.au

C3379a - THE LION RICHLANDS - CARPARK UPGRADE

C3379a-0006(A).xls

DISTRIBUTION BOARD DB-ED (SITE ENTRY)

REVISION A - 14 FEBRUARY 2025

FAULT CURRENT: 6KA USING CASCADING							REV
MAIN SWITCH: 250A NON AUTO LOAD BREAK							A
CHASSIS SIZE: 30 POLE							A
SUPPLIED FROM: DB-S							A
CHASSIS RATING: 250A							A
SUPPLY CABLE: 4C25							A
PHASES: 3							A
PROVIDE THE DB WITH A FULL WIDTH EMPTY DIN RAIL TO ACCOMMODATE FUTURE CONTACTORS AND CONTROLS. PROVIDE THE DB WITH AN AS2293 EMERGENCY LIGHTING CONTROL SYSTEM TO CONTROL THE ASSOCIATED EMERGENCY LIGHTS. PROVIDE THE DB WITH SURGE PROTECTION. EACH CUBICAL MUST BE 800 WIDE. REFER TO THE NOTES FOR ADDITIONAL REQUIREMENTS. PROVIDE A 3 PHASE 63AMP MCB IN DB-S TO SUPPLY DB-ED VIA A 4C+E 25MM SUBMAIN. CONFIRM THE DB-ED POSITION ON SITE. PROVIDE ALL NECESSARY CABLE ACCESS FOR THE DB-ED SUBMAIN AND CIRCUITS.							A
CIRC	PH	CIRCUIT BREAKER (amps)	CONTROL EQUIPMENT	CABLE SIZE (mm ²)	LOCATION	CIRCUIT USE	A
P1	1	20	RCBO	2.5	EXTERNAL	PYLON	A
P2	1	20	RCBO	2.5	EXTERNAL	PYLON	A
P3	1	20	RCBO	2.5	EXTERNAL	PYLON	A
P4	1	20	RCBO	2.5	EXTERNAL	PYLON	A
P5	1	20	RCBO	2.5	EXTERNAL	PYLON	A
P6	1	20	RCBO	2.5	EXTERNAL	PYLON	A
							A
							A
							A
							A
							A
							A
							A
							A
							A
L1	1	20	RCBO PE CELL ON DUSK OFF DAWN	2.5	DRIVEWAY	LIGHTING	A
							A
							A
							A

LEGEND

- 

L1: 1200 LONG IP65 LED BATTEN C/W INTEGRAL SENSOR.
- 

L2: 600 LONG IP65 LED BATTEN C/W INTEGRAL SENSOR.
- 

L3: 100W CARPARK LIGHT WALL MOUNTED AT HIGH LEVEL.
- 

Lx: TYPE AS NOTED BATTEN C/W INTEGRAL NON-MAINTAINED AS2293 EMERGENCY PACK.
- 

GL01: GARDEN BOLLARD 120 DIA, 850 HIGH.
- 

GL02: GARDEN LIGHT 600 HIGH.
- 

GL03: SURFACE MOUNTED RGB TREE LIGHT.
- 

LP01: 50W CARPARK LIGHT MOUNTED ON A 9m POLE.
- 

LP02: 50W CARPARK LIGHT MOUNTED ON A 9m POLE.
- 

LP03: 100W CARPARK LIGHT MOUNTED ON A 9M POLE.
- 

ELECTRICAL SERVICES SWITCHBOARD.
- 

SWITCHBOARD BY OTHERS.
- 

SINGLE PHASE ISOLATOR.
- 

THREE PHASE ISOLATOR.
- 

SINGLE POWER OUTLET.
- 

DOUBLE POWER OUTLET.
- 

ISOLATION LOAD-BREAK SWITCH.
- 

CIRCUIT BREAKER.
- 

CIRCUIT BREAKER C/W MOTOR CONTROL.
- 

FUSE.
- 

SINGLE PHASE.
- 

THREE PHASE.
- 

AS1670.1 THERMAL DETECTOR.
- 

AS1670.1 SMOKE DETECTOR.
- 

AS1670.1 EVACUATION HORN SPEAKER.
- 

FIRE INDICATOR PANEL.
- 

COMMUNICATIONS RACK CR-T.
- 

METER TYPE x.
- 

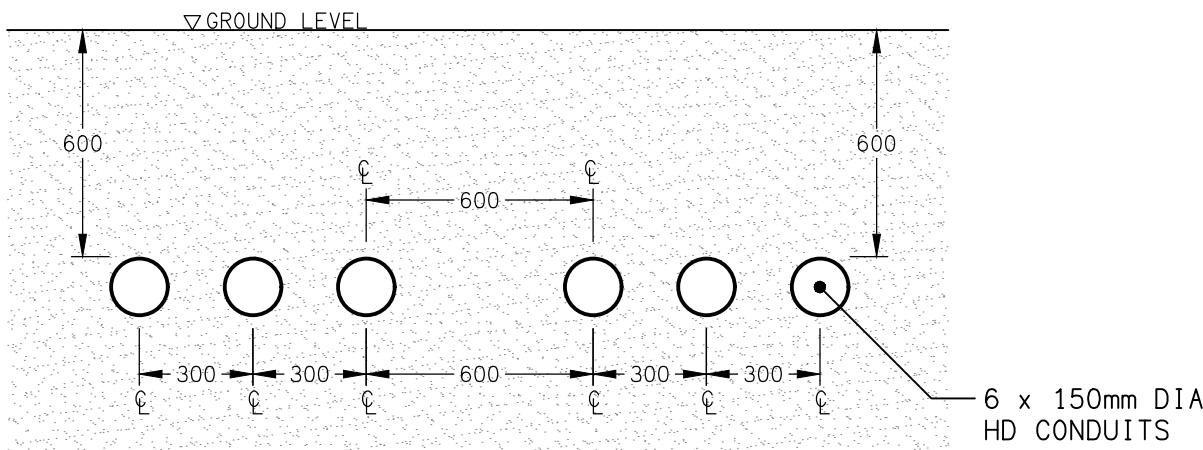
CABLE TRAY / LADDER. TYPE AND SIZE AS NOTED.
- 

UNDERGROUND CONDUIT.
- 

x C-- DESIGNATES NUMBER AND SIZE OF COMMUNICATIONS CONDUITS.
- 

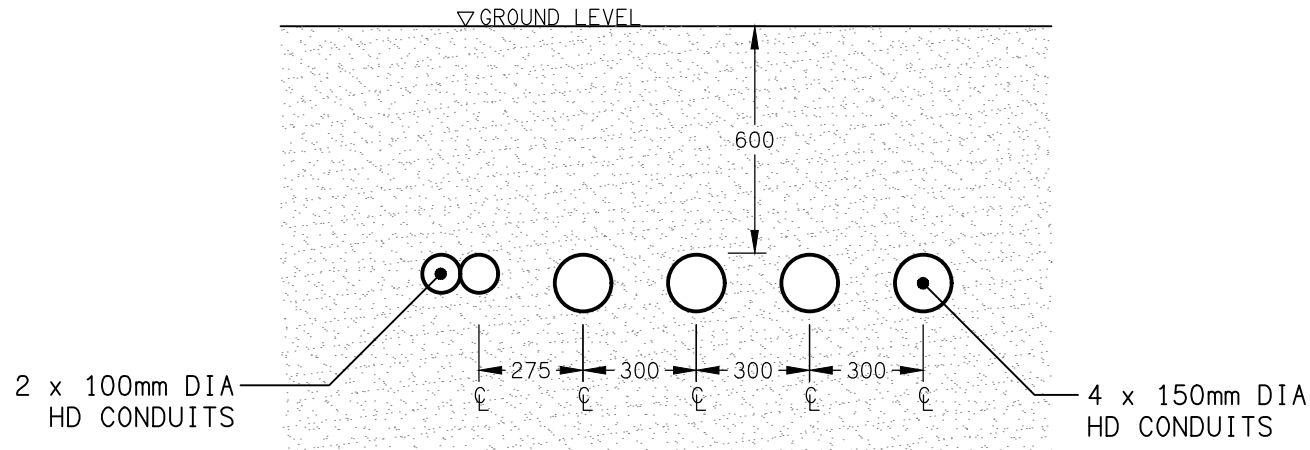
x P-- DESIGNATES NUMBER AND SIZE OF POWER CONDUITS.
- 

UNDERGROUND PIT TYPE x.



DETAIL A

TYPICAL CONSUMERS MAINS CONDUIT SECTION
NOT TO SCALE

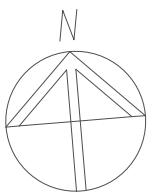


DETAIL B

GENERATOR MAINS CONDUIT SECTION
NOT TO SCALE

PROPOSED SUBTERRANEAN
FIRE TANK ENCLOSURE.
REFER DRAWING E03.

PROPOSED CARPARK PLAN.
REFER DRAWING E02.



PIT 4. 1200 x 1200 x
900 DEEP INSITU PIT C/W
INFILL LID SYSTEM.

GENERATOR

NEW BUILDING MSB
MDB-1

PIT 1 BELOW

PIT 2. 2400 x 2400 x 900
DEEP INSITU PIT C/W INFILL
LID SYSTEM.

DB-T

DB-DS

PIT 3. 2400 x 2400 x 900
DEEP INSITU PIT C/W INFILL
LID SYSTEM.

EXISTING PADMOUNT
SUBSTATION TRANSFORMER.

METER BOARD

DB-ED

EXISTING MSB TO
BE REMOVED.

SITE PLAN

ON-GRADE CARPARK WORKS
SCALE 1:500

PROPOSED CABLE ROUTES.
REFER DRAWING E04.

ELECTRICAL DESIGN GROUP BRISBANE
PTY LTD
ACN 092 710 793
TRADING AS:
ELECTRICAL DESIGN GROUP

THE COPYRIGHT OF THIS DRAWING
REMAINS THE PROPERTY OF THE
ELECTRICAL DESIGN GROUP.
USE FIGURED DIMENSIONS
IN PREFERENCE TO SCALE.
ALL DIMENSIONS TO BE
VERIFIED ONSITE.

 **ELECTRICAL DESIGN GROUP**
ELECTRICAL BUILDING SERVICES CONSULTANTS
BRISBANE GOLD COAST

P.O.Box 15, Sherwood Q.4075
Phone: (07) 3278 4375
Email: brisbane@edg.net.au
Web: www.edg.net.au

PROJECT:
THE LION RICHLANDS - CARPARK UPGRADE

133 PINE ROAD, RICHLANDS

E	CONSTRUCTION	20/06/2025
REV.	DESCRIPTION:	DATE:

DRAWING:
**ELECTRICAL SERVICES
LEGEND & SITE PLAN**

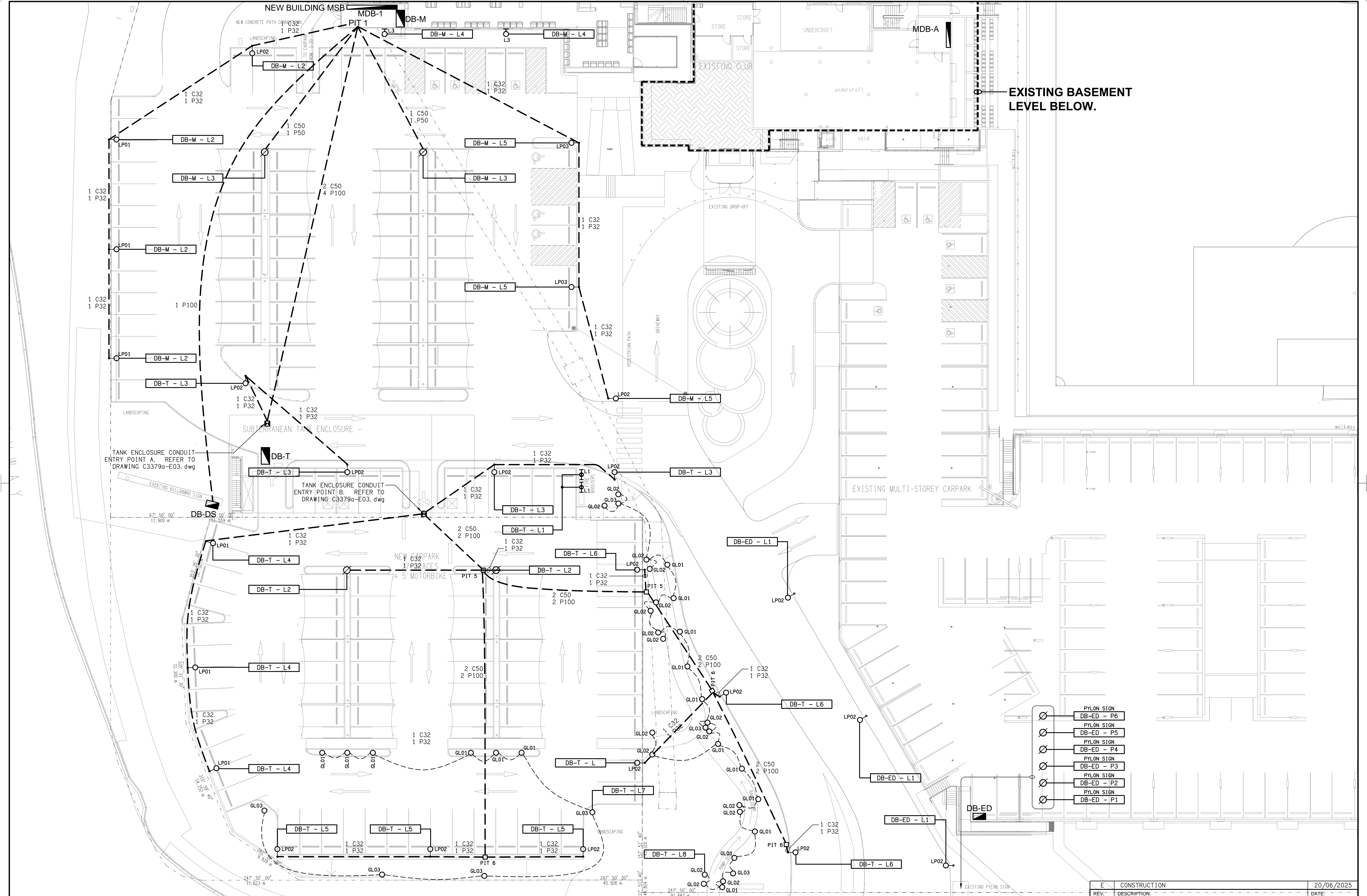
SCALE:
1:500

AT A1

PROJECT NO:
C3379a

DRAWING NO:
E01

REVISION:
E



ELECTRICAL DESIGN GROUP BRISBANE
PTY LTD
ACN 092 710 793
TRADING AS:
ELECTRICAL DESIGN GROUP

THE COPYRIGHT OF THIS DRAWING
REMAINS THE PROPERTY OF THE
ELECTRICAL DESIGN GROUP.
USE FIGURED DIMENSIONS
IN PREFERENCE TO SCALE.
ALL DIMENSIONS TO BE
VERIFIED ONSITE.

ELECTRICAL DESIGN GROUP
ELECTRICAL BUILDING SERVICES CONSULTANTS
BRISBANE GOLD COAST

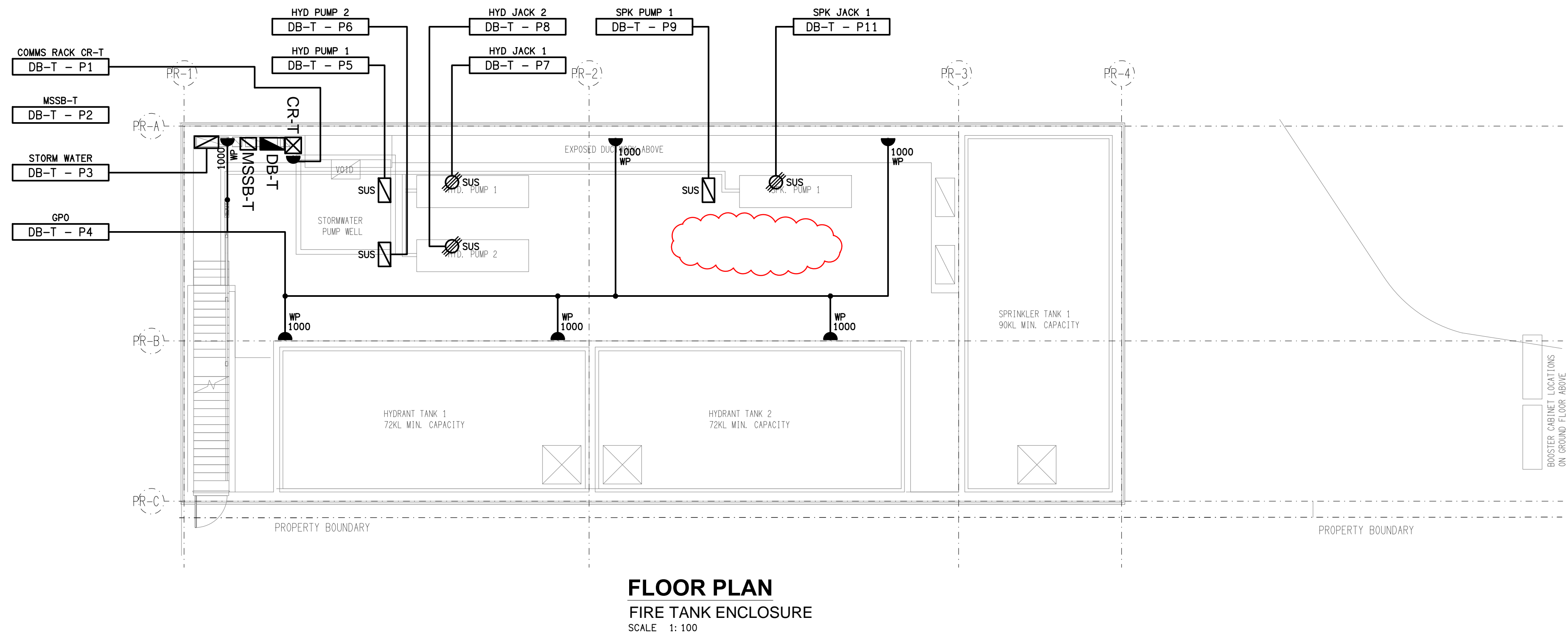
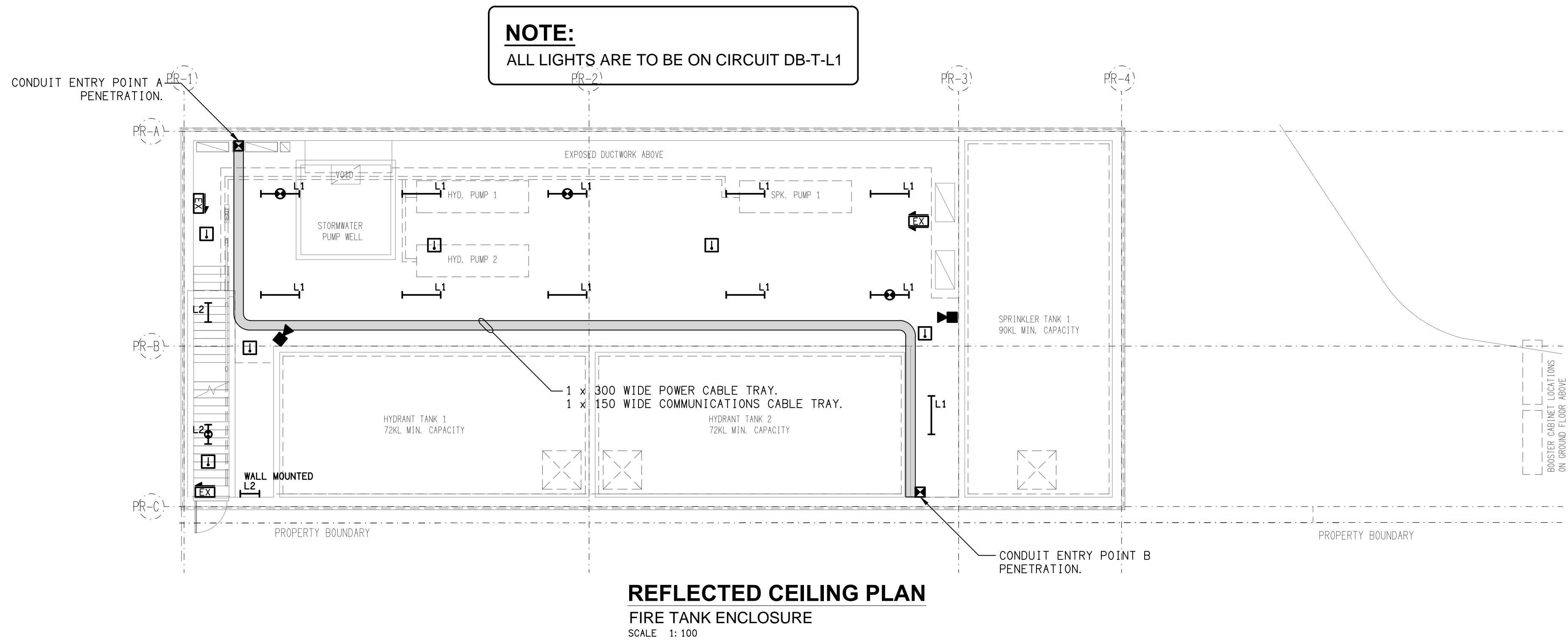
P.O. Box 15, Sherwood Q.4075
Phone: (07) 3278 4375
Email: brisbane@edg.net.au
Web: www.edg.net.au

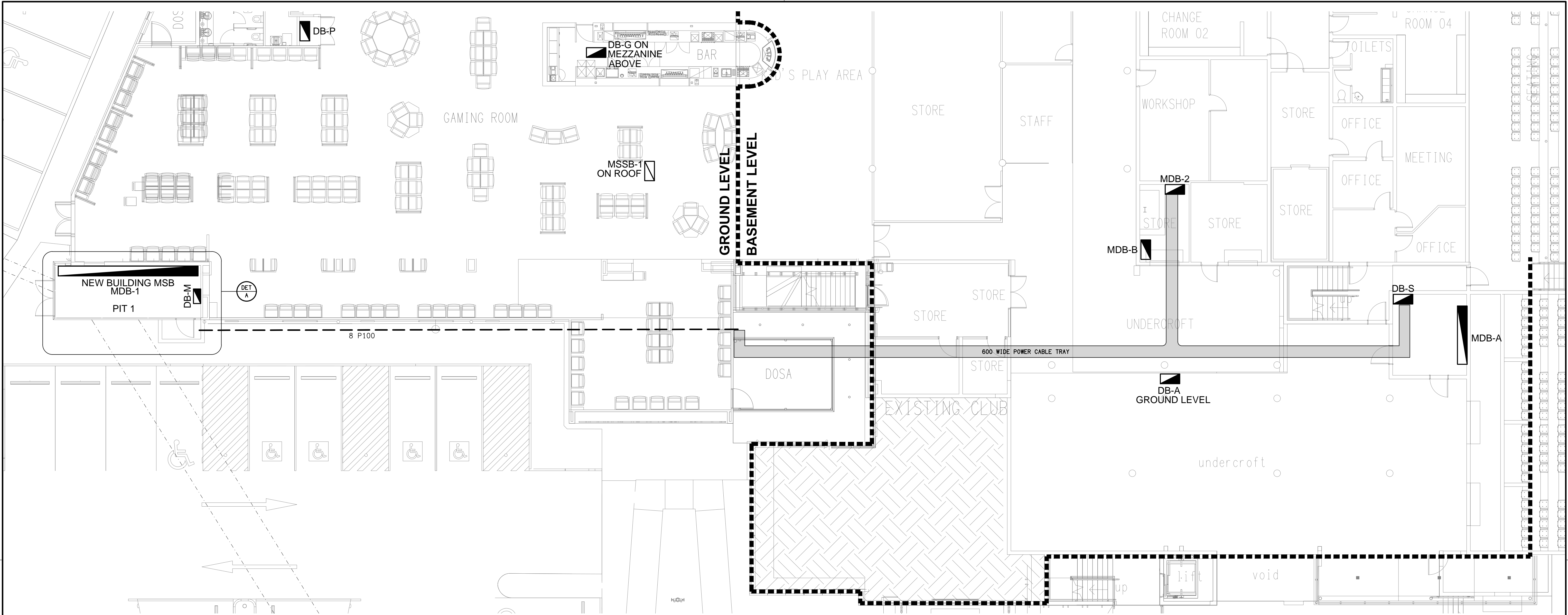
PROJECT:
THE LION RICHLANDS - CARPARK UPGRADE
133 PINE ROAD, RICHLANDS

E	CONSTRUCTION	20/06/2025
REV.	DESCRIPTION:	DATE:

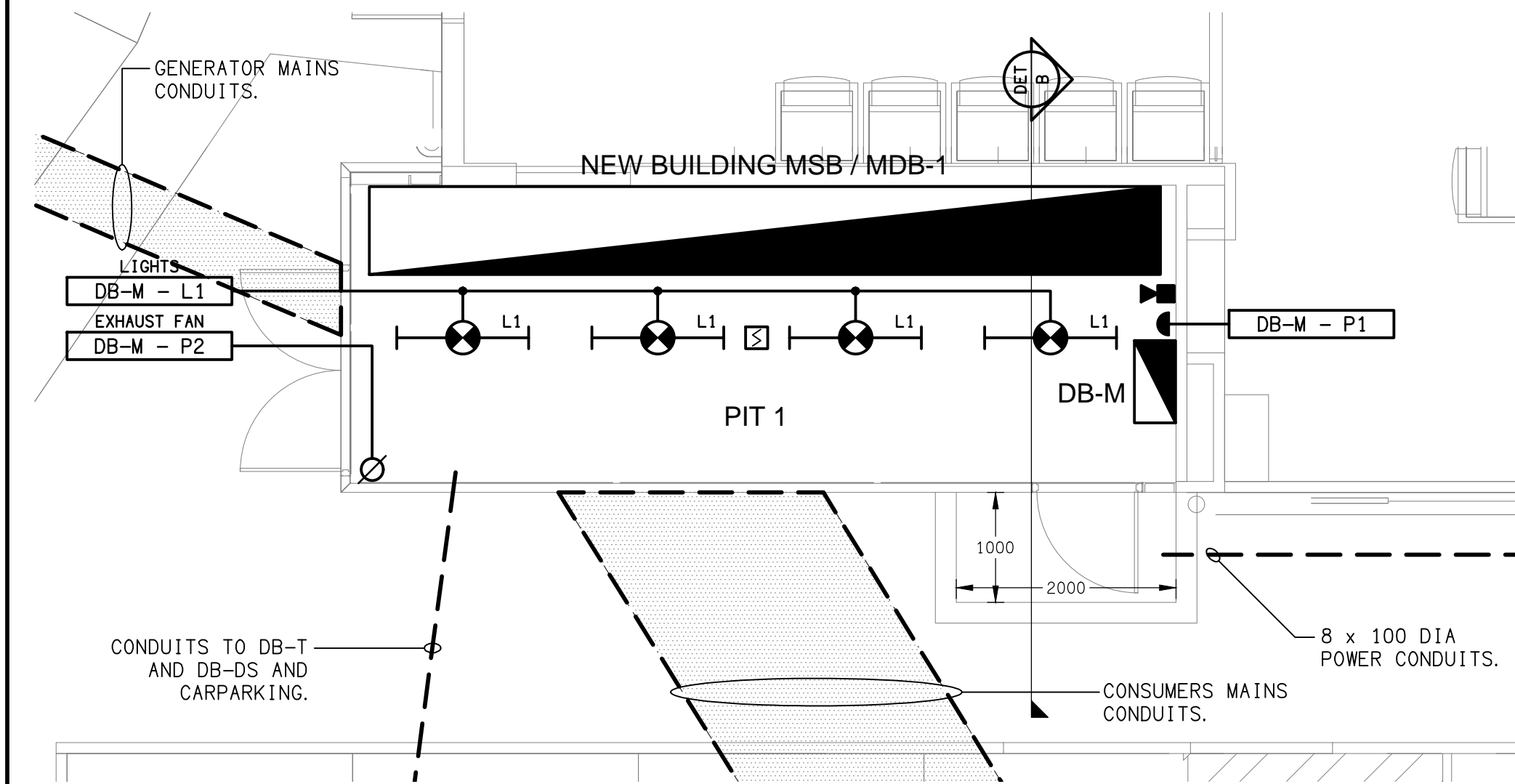
DRAWING:
**ELECTRICAL SERVICES
CARPARK PLAN**

SCALE: 1:200	AT A1	PROJECT NO: C3379a	DRAWING NO: E02	REVISION: E
-----------------	-------	------------------------------	---------------------------	-----------------------

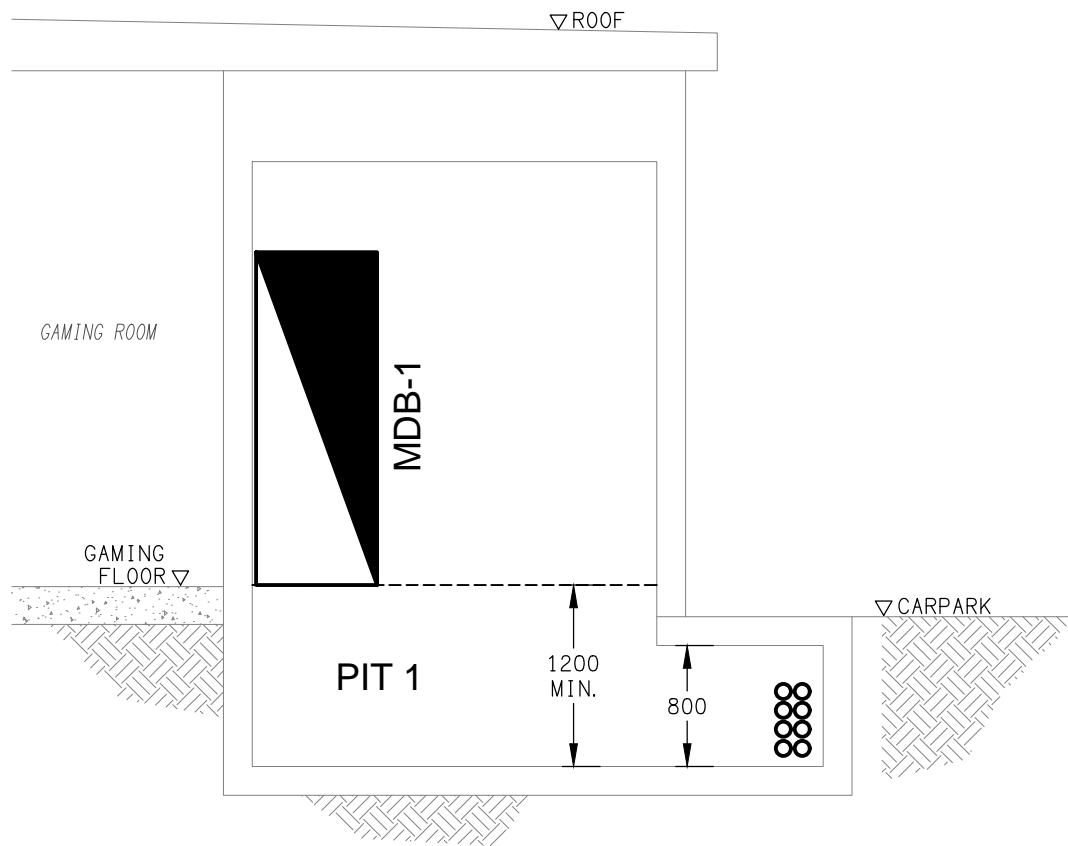




FLOOR PLAN
CABLE ROUTE LAYOUT
SCALE 1: 100



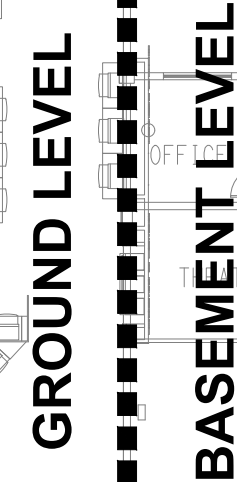
DETAIL A
MDB-1 ROOM PLAN VIEW
SCALE 1: 50



DETAIL B
MDB-1 ROOM SECTION VIEW
SCALE 1: 50



133 PINE ROAD, RICHLANDS



<div>ELECTRICAL DESIGN GROUP BRISBANE PTY LTD ACN 092 710 793</div> <div>TRADING AS: ELECTRICAL DESIGN GROUP</div>	<div>THE COPYRIGHT OF THIS DRAWING REMAINS THE PROPERTY OF THE ELECTRICAL DESIGN GROUP.</div> <div>USE FIGURED DIMENSIONS IN PREFERENCE TO SCALE.</div> <div>ALL DIMENSIONS TO BE VERIFIED ONSITE.</div>	<div><div><div><div><div></div><div>ELECTRICAL DESIGN GROUP</div></div><div><div>ELECTRICAL</div><div>BUILDING</div><div>SERVICES</div><div>CONSULTANTS</div></div><div>BRISBANE</div><div>GOLD COAST</div></div><div><div>P.O.Box 15, Sherwood Q.4075 Phone: (07) 3278 4375 Email: brisbane@edg.net.au Web: www.edg.net.au</div></div></div></div>	<div>PROJECT: THE LION RICHLANDS - CARPARK UPGRADE</div> <div>133 PINE ROAD, RICHLANDS</div>	<div>DRAWING: ELECTRICAL SERVICES SWITCHBOARD LOCATIONS</div> <div>SCALE: 1:200</div> <div>AT A1</div> <div><div>PROJECT NO: C3379a</div><div>DRAWING NO: E06</div><div>REVISION: E</div></div>
--	--	---	--	---

NOTES

10. LIGHTING

THE LIGHTING COMPONENT OF THE ELECTRICAL SERVICES SUB-CONTRACT INCLUDES ALL OF THE INTERNAL AND EXTERNAL LIGHT FITTINGS, LAMPS AND ACCESSORIES. PROVIDE ALL NECESSARY ACCESSORIES TO FACILITATE THE COMPLETE LIGHTING INSTALLATION. THE LIGHTING COMPONENT OF THE ELECTRICAL SERVICES SUB-CONTRACT INCLUDES THOUGH IT IS NOT LIMITED TO THE FOLLOWING EXTENT OF WORK:

- INTERNAL AND EXTERNAL LIGHT FITTINGS.
- EMERGENCY AND EXIT LIGHTING.
- EARTHING OF THE LIGHTING INSTALLATION.
- LIGHTING CONTROL.
- LIGHTING SUBCIRCUITS.
- TESTING AND COMMISSIONING.
- CARPARK LIGHTING POLES AND FOOTINGS.
- CIRCUIT CONNECTION TO THE SHADE STRUCTURE LIGHTING PROVIDED AS PART OF THE SHADE STRUCTURES.

ALL LIGHT SOURCES ARE TO BE SOLID STATE WITH AN AVERAGE LIFE OF 50,000 HOURS AND A MANUFACTURERS WARRANTY OF 5 YEARS

PROVIDE DM-W AND DB-T A SINGLE POINT EMERGENCY LIGHTING SYSTEM THAT COMPLIES WITH THE LATEST ISSUE OF ALL PARTS AS2293 AND THE RELEVANT PARTS OF THE NCC BCA. INSTALL EMERGENCY LIGHT FITTINGS NOMINATED AS MAINTAINED WITH THE LAMP PERMANENTLY ON SUPPLIED VIA AN UNSWITCHED ACTIVE MAINS SUPPLY WHEN THE MAINS SUPPLY IS AVAILABLE. WHEN THE MAINS SUPPLY IS NOT AVAILABLE, THE LAMP IS TO REMAIN ON SUPPLIED BY THE EMERGENCY PACK. SINGLE LAMP MAINTAINED EMERGENCY LIGHTS ARE NOT SWITCHED WITH THE LOCAL GENERAL AREA LIGHTING. (THE LAMP IS ALWAYS ON.)

INSTALL EMERGENCY LIGHT FITTINGS NOMINATED AS NON-MAINTAINED AS FOLLOWS:

- IF THE FITTING IS NOT BEING SWITCHED, THE LAMP IS TO REMAIN OFF WHEN THE MAINS SUPPLY IS AVAILABLE. WHEN THE MAINS SUPPLY IS NOT AVAILABLE THE LAMP IS TO BE SWITCHED ON SUPPLIED BY THE EMERGENCY PACK. UNSWITCHED SINGLE LAMP NON-MAINTAINED EMERGENCY LIGHTS ARE NOT SWITCHED WITH THE LOCAL GENERAL AREA LIGHTING. (THE LAMP IS ON ONLY WHEN THE MAINS SUPPLY IS NOT AVAILABLE.)
- IF THE FITTING IS BEING SWITCHED, THE LAMP IS TO BE SUPPLIED AND CONTROLLED WITH THE LOCAL GENERAL AREA LIGHTING WHEN THE MAINS SUPPLY IS AVAILABLE. WHEN THE MAINS SUPPLY IS NOT AVAILABLE THE LAMP IS TO BE SWITCHED ON, SUPPLIED BY THE EMERGENCY PACK. (THE LAMP IS ON WHEN TURNED ON WITH THE LOCAL GENERAL LIGHTING OR THE MAIN SUPPLY IS NOT AVAILABLE.)

11.0 LIGHT POLES

PROVIDE POLES WITH A TAMPER RESISTANT ACCESS PANEL WITHIN THE POLE BASE AND BASE PLATE THAT INCORPORATE A MINIMUM OF FOUR HOLD DOWN BOLTS. PROVIDE POLES AND INSTITU CONCRETE FOOTINGS DESIGNED SPECIFICALLY TO SUIT THE LOCAL CONDITIONS AND BE ABLE TO WITHSTAND WIND GUSTS OF 150KM/H. THE DESIGN OF THE POLE AND THE FOOTING IS TO BE UNDERTAKEN BY A RESISTED STRUCTURAL ENGINEER. PROVIDE A CERTIFICATE FROM THE STRUCTURAL ENGINEER INDICATING THE POLES AND FOOTINGS MEET THE SPECIFIED DESIGN CRITERIA. PROVIDE DETAILED DRAWINGS OF ALL POLES AND FOOTINGS FOR APPROVAL. PROVIDE A FUSED CONNECTION WITHIN EACH POLE LOCATED BEHIND THE POLE BASE ACCESS PANEL. CONNECT THE POLE TO THE ELECTRICAL EARTH VIA A LUG FIXED TO A STUD WELDED TO THE POLE LOCATED WITHIN THE POLE LOCATED BEHIND THE POLE BASE ACCESS PANEL. TRIM THE HOLD DOWN BOLTS SUCH THAT THEY DO NOT PROTRUDE MORE THAN 15MM ABOVE THE NUT. TREAT THE TRIMMED HOLD DOWN BOLT AGAINST CORROSION AND ENSURE IT DOES NOT CONTAIN SHARP EDGES THAT REPRESENT A HAZARD. ENSURE THE BASE PLATE IS BETWEEN 50 AND 100MM ABOVE THE FINISHED LANDSCAPE LEVEL. PROVIDE A NEAT SMOOTH FINISHED CONCRETE GROUT FILL UNDER THE BASE PLATE ENSURING ANY SPLATTER IS IMMEDIATELY WASHED OFF THE BASE PLATE AND POLE. EXTEND THE CONDUIT INTO THE POLE 50MM ABOVE THE BASE PLATE.

PROVIDE POLES THAT COMPLY WITH AS/NZS 1170.0 STRUCTURAL DESIGN ACTIONS PART 0: GENERAL PRINCIPLES - IMPORTANCE LEVEL 1 WITH A DESIGN WORKING LIFE OF 50 YEARS.

DESIGN THE POLES TO A WIND LOADING AS PER AS/NZS 1170.0 STRUCTURAL DESIGN ACTIONS PART 0: GENERAL PRINCIPLES. THE FRACTION OF CRITICAL DAMPING IS TO BE TAKEN AS 0.05 (ULTIMATE) AND 0.01 (SERVICEABILITY) FOR POLES WITH MORE THAN TWO- (2) OVERLAPS AND 0.02 (ULTIMATE) AND 0.005 (SERVICEABILITY) FOR ALL OTHERS. THE NATURAL FREQUENCY OF THE POLE IS TO BE CALCULATED CONSIDERING VARYING DIAMETERS AND THICKNESS OVER THE HEIGHT OF THE POLE AND USING A 1.1 SAFETY FACTOR FOR THE MASS AT THE TOP OF THE POLE. ENSURE POLE DEFLECTION AT SERVICEABILITY WIND SPEEDS HAVE A DEFLECTION LESS THAN 6.7%.

ENSURE ALL WELDS ARE BY A CONTINUOUS AUTOMATIC GAS SHIELDED ELECTRIC ARC PROCESS COMPLYING WITH THE RELEVANT PARTS OF AS/NZS 1554 STRUCTURAL STEEL WELDING. ENSURE THE LONGITUDINAL SEAM WELDS ON POLE SECTIONS CONFORMS TO GP STANDARDS WHILE BASEPLATE AND SPIGOT WELDS MUST CONFORM TO SP STANDARDS AS MENTIONED IN AS/NZS 1554. WELD SIZES ARE TO BE VERIFIED BY A QUALIFIED STRUCTURAL ENGINEER AND SPECIFIED IN THE ENGINEERING REPORT AND ON WORKSHOP DRAWINGS.

PROVIDE ALL POLES WITH A GALVANISED FOUNDATION BOLT ASSEMBLY COMPLETE WITH POSITIONING TEMPLATE AND TWO- (2) NUTS AND WASHERS PER BOLT PROVIDED TO SUIT THE POLE BASEPLATE. FOUNDATION BOLTS MUST BE MANUFACTURED FROM DEFORMED REINFORCING BARS WITH A NOMINAL YIELD STRESS OF 500 MPA. PROVIDE BOLTS THREADED IN ACCORDANCE WITH AS1275-1985 METRIC SCREW THREADS FOR FASTENERS AND FITTED WITH CLASS 5 NUTS IN ACCORDANCE WITH AS/NZS 1112 ISO METRIC HEXAGON NUTS. FOUNDATION BOLTS MUST BE TIED TO A SUITABLE REINFORCING CAGE. THE LENGTH OF EACH FOUNDATION BOLT MUST ALLOW FOR THE LENGTH OF THE THREAD ABOVE GROUND, A MINIMUM OF 100MM COVER AND A DEVELOPMENT LENGTH IN ACCORDANCE WITH AS3600-1994 CONCRETE STRUCTURES, TABLE 13.1.2.2(A). THE UNDERSIDE OF THE BASEPLATE IS TO BE GROUTED.

THE SECTION CAPACITY OF THE POLE IS TO BE ANALYSED OVER A MINIMUM OF 100 INCREMENTS ACCORDING TO AS4100 STEEL STRUCTURES AND AS/NZS 4600 COLD-FORMED STEEL STRUCTURES. LUMINARIES ARE TO BE ACCESSED BY EXTERNAL MACHINERY E.G. CHERRY PICKERS. LUMINAIRE CROSSARMS SHALL BE DESIGNED TO ENSURE EASY ACCESS OF FITTINGS FOR RE-LAMPING AND AIMING. CLIMBING RUNGS AND MAINTENANCE PLATFORMS ARE NOT REQUIRED.

THE POLE AND ALL STEEL ACCESSORIES ARE TO BE POWDER COATED BLACK HOT DIP GALVANIZED AFTER FABRICATION IN ACCORDANCE WITH AS/NZS 4680 HOT-DIP GALVANIZED (ZINC) COATINGS ON FABRICATED FERROUS ARTICLES.

THE POLES ARE TO BE SANDED AFTER GALVANIZING AND PREHEATED TO 220°C TO DRIVE OFF ANY TRAPPED GAS UNDER THE GALVANIZED SURFACE. A ZINC RICH PRIME COAT INTERPON POLYZINC 660 OR EQUIVALENT SHALL BE APPLIED TO WITHIN 60mm AND 80mm WITHIN FOUR HOURS OF PREHEATING AND GREEN CURED TO 200°C FOR 3 MINUTES. PRIME COAT SHALL BE LIGHTLY SANDED BEFORE APPLICATION OF TOP COAT. COLOUR TOPCOAT SHALL BE A RIPPLE, HIGH BUILD FINISH TO WITHIN 50µm AND 70µm. ENSURE ALL MANUFACTURING TOLERANCES ARE IN ACCORDANCE WITH AS 1798 LIGHTING POLES AND BRACKET ARMS PREFERRED DIMENSIONS. IN PARTICULAR THE POLES SHALL BE CHECKED FOR COMPLIANCE WITH THE STRAIGHTNESS REQUIREMENTS OF THIS STANDARD: 0.3% OF HEIGHT.

ASSEMBLY AND ERECTION ARE TO BE CARRIED OUT ONLY BY QUALIFIED RIGGING PERSONNEL. GROUT THE UNDERSIDE OF ALL POLE BASEPLATES WITHIN SEVEN- (7) DAYS OF INSTALLING THE POLE.

NOTES

12.0 COMMUNICATIONS CABLING

THE COMMUNICATIONS CABLING COMPONENT OF THIS CONTRACT INCLUDES A NEW COMMUNICATIONS RACK CR-T IN THE SUBTERRANEAN TANK ROOM CONNECTED TO THE CLUBHOUSES MAIN EXISTING COMMUNICATIONS RACK VIA A NEW GEL FILLED UNDERGROUND 12 CORE OM4 OPTICAL FIBRE CABLE WITH LC CONNECTORS. A NEW FIBOT IS TO BE PROVIDED IN THE CLUBHOUSES MAIN EXISTING COMMUNICATIONS RACK AND IN CR-T.

THE COMMUNICATIONS CABLING COMPONENT OF THIS CONTRACT INCLUDES, BUT IS NOT LIMITED TO THE FOLLOWING EXTENT OF WORK:

- COMMUNICATIONS RACK CR-T.
- FIBOTS.
- OM4 OPTICAL FIBRE CABLE.
- LABELLING.
- TESTING AND COMMISSIONING.

13. FIRE ALARM SYSTEM

THE EXISTING AS1670.1 FIRE ALARM SYSTEM IS TO BE EXPANDED TO INCLUDE THE NEW MDB-1 ROOM AND THE NEW SUBTERRANEAN TANK ROOM. THE FIRE ALARM SERVICES INCLUDES BUT IS NOT LIMITED TO THE FOLLOWING:

- SUPPLY AND INSTALLATION OF ALL COMPONENTS FORMING PART OF THE FIRE ALARM SERVICES.
- CO-ORDINATION.
- INSPECTIONS.
- TESTING AND COMMISSIONING.
- MAINTENANCE.
- DETECTORS.
- SPEAKERS AND HORNS.
- UPGRADING THE EXISTING FIP AS NECESSARY.
- UPDATING THE ZONE PLAN.
- CABLING, CABLE SUPPORT SYSTEMS AND ACCESS.
- EXPANDING THE CLUBS EXISTING BRIGADE MONITORED AS1670.1 ADDRESSABLE FIRE ALARM SYSTEM INTO THE MDB-1 ROOM AND THE NEW SUBTERRANEAN TANK ROOM.
- ALL MINOR COMPONENTS AND INCIDENTAL WORKS NOT SPECIFICALLY REFERRED TO, HOWEVER NECESSARY TO COMPLETE THE FIRE ALARM SERVICES INSTALLATION SUCH THAT IT IS HANDED OVER COMPLETE, OPERATIONAL AND FIT FOR THE INTENDED USE.

PRIOR TO PRACTICAL COMPLETION CERTIFY THE INSTALLATION ON A FORM 16 AS COMPLYING WITH THE RELEVANT CODES AND STANDARDS AND INCLUDE A COPY OF THE CERTIFICATION IN THE MANUAL.

PROVIDE THE AS CONSTRUCTED AND COMMISSIONING INFORMATION TO ALLOW THE AS1670.1 DESIGNERS STATEMENT TO BE COMPLETED.

THE TANK ROOM SERVICES ARE TO BE ON DEDICATED LOOPS / ZONES FROM THE CLUB HOUSE SERVICES.

IRRESPECTIVE OF THE SERVICES DETAILED ON THE DRAWING, THE SYSTEM MUST BE COMPLIANT WITH AS1670.1:2024 AND THE REQUIREMENTS OF THE QUEENSLAND FIRE AND EMERGENCY SERVICES.

THE CONTRACTOR IS RESPONSIBLE FOR PAYING ANY CALL OUT FEES ISSUED BY QUEENSLAND FIRE DEPARTMENT THAT ARE THE RESULT OF DEFECTIVE WORKS, CABLING, OR SYSTEM COMPONENTS

ENSURE ALL AS1670.1:2024 WORKS ARE UNDERTAKEN BY, OR UNDER THE DIRECTION OF A SUITABLY QUALIFIED AND EXPERIENCED FIRE ALARM SYSTEM INSTALLER WHO HOLD THE REQUIRED QBCC AND FIRE PROTECTION CONTRACTORS REGISTRATION BOARD OF QUEENSLAND INC REGISTRATIONS. ENSURE ALL 240-VOLT WORKS ARE UNDERTAKEN BY AN ELECTRICIAN WITH AN ELECTRICAL SUB CONTRACTORS LICENCE. ENSURE THE INSTALLATION AND ALL COMPONENTS, FIXTURES, FITTINGS, OUTLETS AND CABLES ARE SUPPLIED AND INSTALLED TO A HIGH STANDARD THROUGHOUT, AND INSTALLED IN A NEAT AND TRADESMAN LIKE MANNER, TO THE CURRENT INDUSTRY STANDARDS. ENSURE ALL MATERIALS AND COMPONENTS OF A SIMILAR TYPE ARE OF THE SAME MANUFACTURER AND INSTALLED IN A UNIFORM MANNER.

IT IS THE CONTRACTOR'S RESPONSIBILITY TO ENSURE THAT THE FIRE ALARM INSTALLATION IS FIT FOR PURPOSE AND IS PROVIDED AS A COMPLETE WORKING INSTALLATION. IT IS THE FIRE ALARM CONTRACTOR'S RESPONSIBILITY TO PROVIDE ALL COMPONENTS, FITTINGS, FIXTURES, SYSTEMS, PROGRAMMING ETC IRRESPECTIVE OF THE LEVEL DETAILED IN THE DOCUMENTS SUCH THAT THE INSTALLATION IS PROVIDED AS A COMPLETE WORKING INSTALLATION.

ELECTRICAL DESIGN GROUP BRISBANE PTY LTD ACN 092 710 793		THE COPYRIGHT OF THIS DRAWING REMAINS THE PROPERTY OF THE ELECTRICAL DESIGN GROUP.		PROJECT: THE LION RICHLANDS - CARPARK UPGRADE		D CONSTRUCTION 20/06/2025	
TRADING AS: ELECTRICAL DESIGN GROUP		USE FIGURED DIMENSIONS IN PREFERENCE TO SCALE.		DRAWING: ELECTRICAL SERVICES NOTES 2		REV: DESCRIPTION: DATE:	
ALL DIMENSIONS TO BE VERIFIED ONSITE.		P.O.Box 15, Sherwood Q.4075 Phone: (07) 3278 4375 Email: brisbane@edg.net.au Web: www.edg.net.au		133 PINE ROAD, RICHLANDS		SCALE: NTS	
		ELECTRICAL DESIGN GROUP BRISBANE GOLD COAST				PROJECT NO: C3379a	
						DRAWING NO: E08	
						REVISION: D	
						AT A1	