



ELECTRICAL DESIGN GROUP

ELECTRICAL BUILDING SERVICES CONSULTANTS

P.O. Box 15, SHERWOOD Q. 4075

Phone: (07) 3278 4375 Fax: (07) 3716 0222

Web Site: www.edg.net.au Email: brisbane@edg.net.au

C3403a - AUTOPACT KIA SPRINGWOOD

C3403a-0002(B).xls

ELECTRICAL EQUIPMENT SCHEDULE

REVISION B - 17 OCTOBER 2025

THE EQUIPMENT SUPPLIER CONTACT DETAILS MAY BE AVAILABLE ON THE EDG WEBSITE VIA THE FOLLOWING LINK www.edg.net.au/links.html					
TYPE	LAMPS	DESCRIPTION	COLOUR / ACCESSORY	CATALOGUE No	REV
S1	LED	RECESSED LOW GLARE RECTANGULAR DOWNLIGHT C/W DUAL 240V CONNECTIONS.	BLACK	LUMIQUI CREATIONS S1 NICE G2 484036	A
S1A	LED	RECESSED LOW GLARE RECTANGULAR DOWNLIGHT C/W DUAL 240V CONNECTIONS.	WHITE	LUMIQUI CREATIONS S1A NICE G2 304050	A
S2	LED	ULTRA LOW GLARE RECESSED DOWNLIGHT		LUMIQUI CREATIONS S2 LV 075 PRO 123050	A
S3	LED	ULTRA LOW GLARE RECESSED DOWNLIGHT		LUMIQUI CREATIONS S3 LV 075 PRO 154050	A
PE1	LED	DECORATIVE PENDANT SUSPENDED TO 2400 AFFL		LUMIQUI CREATIONS PE1 MARSDEN PENDANT TRIPLE	A
PE3	LED	DECORATIVE PENDANT SUSPENDED TO 2200 AFFL		LUMIQUI CREATIONS PE3 MARSDEN PENDANT SINGLE	A
CL3	LED	CUSTOM EXTRUSION SUSPENDED TO 3200AFFL DUAL 240 VOLT CONNECTIONS WITH ONE AT EACH SHORTER END.		LUMIQUI CREATIONS CL3 HP SERIES LINEAR 3040110	A
IL1	RED LED	INFINITY LOOP C/W CONTINUOUS RED LED SILICON ONLY IN TILED FLOOR WITH 23 X 17 PROFILE REFER TO THE LUMIQUI INSTALLATION DETAILS		LUMIQUI CREATIONS IL1 NEON FLEX XS 09R110	A
LL1-1	LED	CUSTOM 50 X 34 LINEAR PROFILE C/W 83DEG ANGLE END CAP RECESSED. REFER TO THE LUMIQUI INSTALLATION DETAILS		LUMIQUI CREATIONS LL1-1 HP LINEAR 2530110	A
L1	60W 4000K LED	RECESSED DOWNLIGHT LOCATED WITHIN THE EXISTING CEILING CUTOUTS. REMOTE DRIVER MODIFY THE CUTOUTS TO ACCOMMODATE THE NEW FITTING.	WHITE	EQUAL TO GAMMA ILLUMINATION COBALT 1444-4K-60W	A
L2	22W 4000K LED PER FITTING	SURFACE MOUNTED 3800 LONG TRACK C/W FOUR ADJUSTABLE 240 FITTINGS. EACH FITTING IS TO CONTAIN AN INTEGRAL DRIVER. CONFIRM THE AIMING OF THE FITTINGS ON SITE WITH THE OPERATOR	BLACK	EQUAL TO GAMMA ILLUMINATION SERIES 25 TRACK & SCOPE 1305-FL-4K- 22W FITTINGS	A



ELECTRICAL DESIGN GROUP

ELECTRICAL BUILDING SERVICES CONSULTANTS

P.O. Box 15, SHERWOOD Q. 4075

Phone: (07) 3278 4375 Fax: (07) 3716 0222

Web Site: www.edg.net.au Email: brisbane@edg.net.au

C3403a - AUTOPACT KIA SPRINGWOOD

C3403a-0002(B).xls

ELECTRICAL EQUIPMENT SCHEDULE

REVISION B - 17 OCTOBER 2025

THE EQUIPMENT SUPPLIER CONTACT DETAILS MAY BE AVAILABLE ON THE EDG WEBSITE VIA THE FOLLOWING LINK www.edg.net.au/links.html					
TYPE	LAMPS	DESCRIPTION	COLOUR / ACCESSORY	CATALOGUE No	REV
L3	1600LM /M 4000K 24V LED	ROD SUSPENDED ROUND 4500 DIA 100 WIDE X 150 HIGH PROFILE C/W OPAL DIFFUSER AND INTEGRAL DRIVERS CUSTOM COLOUR AND FINISH TO BE CONFIRMED WITH THE ARCHITECT PROVIDE SHOP DRAWINGS FOR APPROVAL.			A
L4	13W 4000K LED	RECESSED DOWNLIGHT C/W REMOTE DRIVER	WHITE	EQUAL TO GAMMA ILLUMINATION COBALT 1402-ER-4K-13W	A
L5	28W 4000K LED	RECESSED DOWNLIGHT LOCATED WITHIN THE EXISTING CEILING CUTOUTS. REMOTE DRIVER MODIFY THE CUTOUTS TO ACCOMMODATE THE NEW FITTING.	WHITE	EQUAL TO GAMMA ILLUMINATION COBALT 1442-4K-28W	A
L6	880LM /M 4000K 24V LED	LED STRIP LIGHT IN A SCREW FIXED EXTRUSION C/W OPAL DIFFUSER MOUNTED IN THE CEILING PELMET AS PER THE ARCHITECTURAL DETAIL. REMOTE POWER SUPPLIES AS REQUIRED LOCATED IN A CONCEALED ACCESSIBLE POSITION NOTED ON THE AS CONSTRUCTED DOCUMENTS.	NATURAL	EQUAL TO MELEC ML-ALU-1407-2M - ML-VLCRI-14.4-NW	A
L7	880LM /M 4000K 24V LED	LED STRIP LIGHT IN A SCREW FIXED EXTRUSION C/W OPAL DIFFUSER MOUNTED IN THE CEILING PELMET AS PER THE ARCHITECTURAL DETAIL. REMOTE POWER SUPPLIES AS REQUIRED LOCATED IN A CONCEALED ACCESSIBLE POSITION NOTED ON THE AS CONSTRUCTED DOCUMENTS.	NATURAL	EQUAL TO MELEC ML-ALU-1407-2M - ML-VLCRI-14.4-NW	A
L8	880LM /M 4000K 24V LED	LED STRIP LIGHT IN A SCREW FIXED EXTRUSION C/W OPAL DIFFUSER FLUSH RECESSED INTO THE FEATURE TIMBER CEILING. CONFIRM THE SETOUT WITH THE ARCHITECT. REMOTE POWER SUPPLIES AS REQUIRED LOCATED IN A CONCEALED ACCESSIBLE POSITION NOTED ON THE AS CONSTRUCTED DOCUMENTS.	NATURAL	EQUAL TO MELEC ML-ALUR-K-V3 - ML-VLCRI-14.4-NW	A
L9	36W 4000K LED	RECESSED DOWNLIGHT LOCATED WITHIN THE EXISTING CEILING CUTOUTS. REMOTE DRIVER MODIFY THE CUTOUTS TO ACCOMMODATE THE NEW FITTING.	WHITE	EQUAL TO GAMMA ILLUMINATION COBALT 1717-4K-36W	A
E1	LED	EMERGENCY LIGHT: RECESSED NON-MAINTAINED EMERGENCY LIGHT. AS2293 CLASSIFICATION C0-D40 - C90-D40.	WHITE	STANILITE SF1LEDP LITHIUM BATTERY	A
EX	LED	EXIT LIGHT: MAINTAINED 24M VIEWING DISTANCE EXIT LIGHT C/W DIFFUSERS & DIRECTIONAL ARROWS AS SHOWN AND A IP56 HOUSING CEILING OR WALL MOUNT BETWEEN 2100mm & 2700mm AFFL IF THERE IS NO VERTICAL SURFACE TO MOUNT THE FITTING ON WITHIN THIS RANGE CONFIRM THE MOUNTING HEIGHT WITH THE ENGINEER. AS2293 CLASSIFICATION C0-D3.2 - C90-E2.	WHITE LOGO GREEN BACKGROUND WHITE BODY	STANILITE PLQLEDP LITHIUM BATTERY	A



ELECTRICAL DESIGN GROUP

ELECTRICAL BUILDING SERVICES CONSULTANTS

P.O. Box 15, SHERWOOD Q. 4075

Phone: (07) 3278 4375 Fax: (07) 3716 0222

Web Site: www.edg.net.au Email: brisbane@edg.net.au

C3403a - AUTOPACT KIA SPRINGWOOD

C3403a-0002(B).xls

ELECTRICAL EQUIPMENT SCHEDULE

REVISION B - 17 OCTOBER 2025

THE EQUIPMENT SUPPLIER CONTACT DETAILS MAY BE AVAILABLE ON THE EDG WEBSITE VIA THE FOLLOWING LINK www.edg.net.au/links.html					
TYPE	LAMPS	DESCRIPTION	COLOUR / ACCESSORY	CATALOGUE No	REV
LIGHTING CONTROL SWITCH PANEL (SP1)		WALL MOUNTED MULTI GANG SWITCH PANEL MOUNTED AT 1000 AFFL	WHITE	CLIPSAL C2000 SERIES	A
LIGHTING CONTROL SWITCH PANEL (SP2)		WALL MOUNTED MULTI GANG SWITCH PANEL MOUNTED AT 1000 AFFL	WHITE	CLIPSAL C2000 SERIES	A
LIGHTING CONTROL SWITCH PANEL (SP3)		WALL MOUNTED MULTI GANG SWITCH PANEL MOUNTED AT 1000 AFFL	WHITE	CLIPSAL C2000 SERIES	A
ONE-WAY LIGHT SWITCH		ONE-WAY LIGHT SWITCH C/W CIRCUIT IDENTIFICATION ON THE FACEPLATE BEHIND THE SURROUND MOUNTED AT 1100mm AFFL UNLESS NOTED OTHERWISE.	WHITE	CLIPSAL 2000 SERIES 30USM	A
SINGLE POWER OUTLET		SINGLE POWER OUTLET C/W CIRCUIT IDENTIFICATION ON THE FACEPLATE BEHIND THE SURROUND MOUNT AT 300 AFFL U.N.O.	WHITE	CLIPSAL C2000 SERIES	A
AUTO DOOR (AD) SINGLE POWER OUTLET		SINGLE POWER OUTLET C/W CIRCUIT IDENTIFICATION ON THE FACEPLATE BEHIND THE SURROUND MOUNTED WITHIN THE AUTO DOOR HEAD MULLION	WHITE	CLIPSAL C2000 SERIES	A
DOUBLE POWER OUTLET		DOUBLE POWER OUTLET C/W CIRCUIT IDENTIFICATION ON THE FACEPLATE BEHIND THE SURROUND MOUNT AT 300 AFFL U.N.O	WHITE	CLIPSAL C2000 SERIES	A
DOUBLE POWER OUTLET (USB)		DOUBLE POWER OUTLET C/W USB CHARGER AND CIRCUIT IDENTIFICATION ON THE FACEPLATE BEHIND THE SURROUND MOUNT AT 300mm AFFL U.N.O. RATING 10A U.N.O.	WHITE	CLIPSAL C2000 SERIES + 30USBCM MECH	A
SINGLE-PHASE ISOLATOR		SINGLE-PHASE WEATHERPROOF ISOLATOR. MOUNT AT 1350mm AFFL U.N.O. RATING 20A U.N.O. CONNECT TO EQUIPMENT VIA FLEXIBLE CONDUIT.	-	CLIPSAL WHT20	A
THREE-PHASE ISOLATOR		THREE-PHASE WEATHERPROOF ISOLATOR. MOUNT AT 1350mm AFFL U.N.O. RATING 20A U.N.O. CONNECT TO EQUIPMENT VIA FLEXIBLE CONDUIT. "RSD" DENOTES ROLLER SHUTTER DOOR SUPPLY - COORDINATE LOCATION ONSITE WITH MOTOR.	-	CLIPSAL WHT35	A
SMOKE DETECTOR		AS1670.1 SURFACE MOUNTED SMOKE DETECTOR WHITE UNLESS NOTED AS BK THEN BLACK TYPE TO MATCH THE EXISTING ALARM SYSTEM. CONNECT THE DETECTOR TO THE ASSOCIATED ZONE.			A
SMOKE DETECTOR CONCEALED		AS1670.1 CONCEALED SPACE SMOKE DETECTOR C/W COMPLIANT ACCESS TYPE TO MATCH THE EXISTING ALARM SYSTEM. CONNECT THE DETECTOR TO THE ASSOCIATED ZONE.			A



ELECTRICAL DESIGN GROUP

ELECTRICAL BUILDING SERVICES CONSULTANTS

P.O. Box 15, SHERWOOD Q. 4075

Phone: (07) 3278 4375 Fax: (07) 3716 0222

Web Site: www.edg.net.au Email: brisbane@edg.net.au

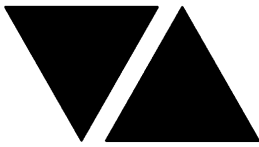
C3403a - AUTOPACT KIA SPRINGWOOD

C3403a-0002(B).xls

ELECTRICAL EQUIPMENT SCHEDULE

REVISION B - 17 OCTOBER 2025

THE EQUIPMENT SUPPLIER CONTACT DETAILS MAY BE AVAILABLE ON THE EDG WEBSITE VIA THE FOLLOWING LINK www.edg.net.au/links.html					
TYPE	LAMPS	DESCRIPTION	COLOUR / ACCESSORY	CATALOGUE No	REV
RECESSED FIRE ALARM SPEAKER		AS1670.1 RECESSED FIRE ALARM SPEAKER C/W GRILL WHITE UNLESS NOTED AS BK THEN BLACK			A
MATV OUTLET		MATV OUTLET CONNECTED TO THE EXISTING MATV SYSTEM VIA A RG6 CABLE RUN IN STAR CONFIGURATION. UPGRADE THE MATV SYSTEM PASSIVE EQUIPMENT AS NECESSARY TO ACCOMMODATE THE NEW OUTLETS.	WHITE	CLIPSAL C2000 SERIES	A
CAT 6 COMMUNICATIONS OUTLET		RJ45 CAT-6 COMMUNICATIONS OUTLET, CABLE THE GROUND LEVEL OUTLETS TO COMMUNICATIONS RACK CR-B AND THE BASEMENT / SERVICE OUTLETS TO COMMUNICATIONS RACK CR-A. TERMINATED ONTO FACILITY PATCH PANELS VIA 4-PAIR CAT-6 UTP CABLE. MOUNT UP TO 3 RJ45 OUTLETS PER MULTI-GANG FACEPLATE WITH SEPARATE PERMANENT LABELLING FOR EACH OUTLET. MOUNT AT 300 AFFL U.N.O.	WHITE	CLIPSAL C2000 SERIES KRONE JACK C/W SHUTTER	A
COMMUNICATIONS RACK CR-A		EXISTING COMMUNICATIONS RACK TO BE UPGRADED AS NECESSARY AND PROVIDED WITH ADDITIONAL PATCH PANELS TO ACCOMMODATE THE ADDITIONAL COMMUNICATIONS OUTLETS. REMOVE ALL REDUNDANT CABLING AND UPDATE THE PORT NUMBERING.			A
COMMUNICATIONS RACK CR-B		EXISTING COMMUNICATIONS RACK TO BE UPGRADED AS NECESSARY AND PROVIDED WITH ADDITIONAL PATCH PANELS TO ACCOMMODATE THE ADDITIONAL COMMUNICATIONS OUTLETS. REMOVE ALL REDUNDANT CABLING AND UPDATE THE PORT NUMBERING.			A
DB-SH		EXISTING SHOWROOM DISTRIBUTION BOARD TO BE UPGRADED WITH NEW OUTGOING CIRCUIT SWITCHGEAR AS REQUIRED. ALL EXISTING SWITCHGEAR MADE REDUNDANT BY THE WORKS IS TO BE REMOVED. UPDATE THE SCHEDULE AT PRACTICAL COMPLETION. ALL NEW DB-SH CIRCUITS ARE TO BE SINGLE PHASE 20 AMP RCBO PROTECTED 2.5MM. IT IS ACCEPTABLE TO UTILISE EXISTING CIRCUITS TO SUPPLY THE NEW DB-SH SERVICES IF THEY HAVE APPROPRIATE CAPACITY AND ARE OF A SIMILAR USE.			A
DB-O		EXISTING SERVICE / BASEMENT DISTRIBUTION BOARD TO BE UPGRADED WITH NEW OUTGOING CIRCUIT SWITCHGEAR AS REQUIRED. ALL EXISTING SWITCHGEAR MADE REDUNDANT BY THE WORKS IS TO BE REMOVED. UPDATE THE SCHEDULE AT PRACTICAL COMPLETION. ALL NEW DB-SH CIRCUITS ARE TO BE SINGLE PHASE 20 AMP RCBO PROTECTED 2.5MM. IT IS ACCEPTABLE TO UTILISE EXISTING CIRCUITS TO SUPPLY THE NEW DB-O SERVICES IF THEY HAVE APPROPRIATE CAPACITY AND ARE OF A SIMILAR USE.			A
MSB		EXISTING SITE MSB TO REMAIN AS IS			A
MSSB		EXISTING MECHANICAL SERVICES SWITCHBOARD TO REMAIN AS IS.			A



ELECTRICAL DESIGN GROUP

ELECTRICAL BUILDING SERVICES CONSULTANTS

P.O. Box 15, SHERWOOD Q. 4075

Phone: (07) 3278 4375 Fax: (07) 3716 0222

Web Site: www.edg.net.au Email: brisbane@edg.net.au

C3403a - AUTOPACT KIA SPRINGWOOD

C3403a-0002(B).xls

ELECTRICAL EQUIPMENT SCHEDULE

REVISION B - 17 OCTOBER 2025

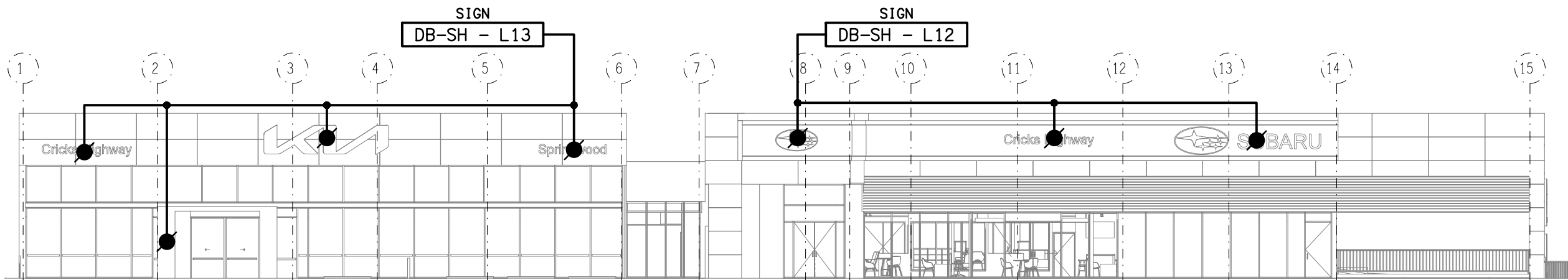
THE EQUIPMENT SUPPLIER CONTACT DETAILS MAY BE AVAILABLE ON THE EDG WEBSITE VIA THE FOLLOWING LINK www.edg.net.au/links.html					
TYPE	LAMPS	DESCRIPTION	COLOUR / ACCESSORY	CATALOGUE No	REV
FLOOR BOX (FB1)		INSITU FLUSH FLOOR BOX C/W A DOUBLE GPOS+ 2 COMMUNICATIONS OUTLETS ON THE SAME FACEPLATE . PROVIDE A 32 DIA CONDUIT C/W A SPARE DRAW WIRE FROM THE REAR OF THE COMMUNICATIONS FACEPLATE TO THE CEILING SPACE ABOVE THE COMMUNICATIONS RACK CR-A. PROVIDE THE GPOS AND COMMUNICATIONS OUTLETS AS PER THE STANDARD DESCRIPTIONS.	STAINLESS STEEL	ECD FB2SHD	A
SIGN CONNECTION		COORDINATE THE LOCATION AND CONNECTION WITH THE SIGN CONTRACTOR ENSURING THE 413 / GPO / ISOLATORS ARE PROVIDED WITH APPROPRIATE WEATHER PROTECTION AND ARE CONCEALED FROM VIEW.			B

LEGEND

- ELECTRICAL SERVICES SWITCHBOARD.
- SWITCHBOARD BY OTHERS.
- SINGLE POWER OUTLET.
- DOUBLE POWER OUTLET.
- DOUBLE POWER OUTLET C/W USB CHARGER.
- SPECIAL PURPOSE POWER OUTLET.
- SIGN CONNECTION.
- SINGLE PHASE ISOLATOR.
- ELECTRICAL FLOOR BOX, TYPE AS NOTED.
- LIGHTING CONTROL SWITCH PANEL, TYPE AS NOTED.
- ONE-WAY LIGHT SWITCH.
- CIRCUIT LINE.
- SWITCH LINE.
- POWER CIRCUIT DESIGNATION.
DENOTES DB AND CIRCUIT.
- ELECTRICAL EQUIPMENT AS NOTED.
- RJ45 COMMUNICATIONS OUTLET.
- MATV OUTLET.
- SMOKE DETECTOR.
- SMOKE DETECTOR CONCEALED.
- RECESSED FIRE ALARM SPEAKER.
- E1: GENERAL LED EMERGENCY LIGHT.
- EX: EMERGENCY LED EXIT LIGHT.
- S1: RECESSED LOW GLARE DOWNLIGHT.
- S1a: RECESSED LOW GLARE DOWNLIGHT.
- S2: RECESSED ULTRA LOW GLARE DOWNLIGHT.
- S3: RECESSED ULTRA LOW GLARE DOWNLIGHT.
- PE1: DECORATIVE SUSPENDED PENDANT.
- PE3: DECORATIVE SUSPENDED PENDANT.
- CL3: SUSPENDED CUSTOM EXTRUSION LIGHT FITTING.
- IL1: CONTINUOUS LOOP LED STRIP LIGHT.
- LL1-1: RECESSED CUSTOM LINEAR PROFILE LIGHT FITTING.
- L1: RECESSED DOWNLIGHT.
- L2: 3800 LONG TRACK WITH 4 ADJUSTABLE LIGHT FITTINGS.
- L3: ROD SUSPENDED 4500 DIA ROUND RING PENDANT.
- L4: RECESSED DOWNLIGHT.
- L5: RECESSED DOWNLIGHT LOCATED WITHIN THE EXISTING CUTOUTS.
- L6: CEILING PELMET LED STRIP LIGHT.
- L7: CEILING PELMET LED STRIP LIGHT.
- L8: FEATURE TIMBER CEILING LED STRIP LIGHT.
- L9: RECESSED DOWNLIGHT LOCATED WITHIN THE EXISTING CUTOUTS.

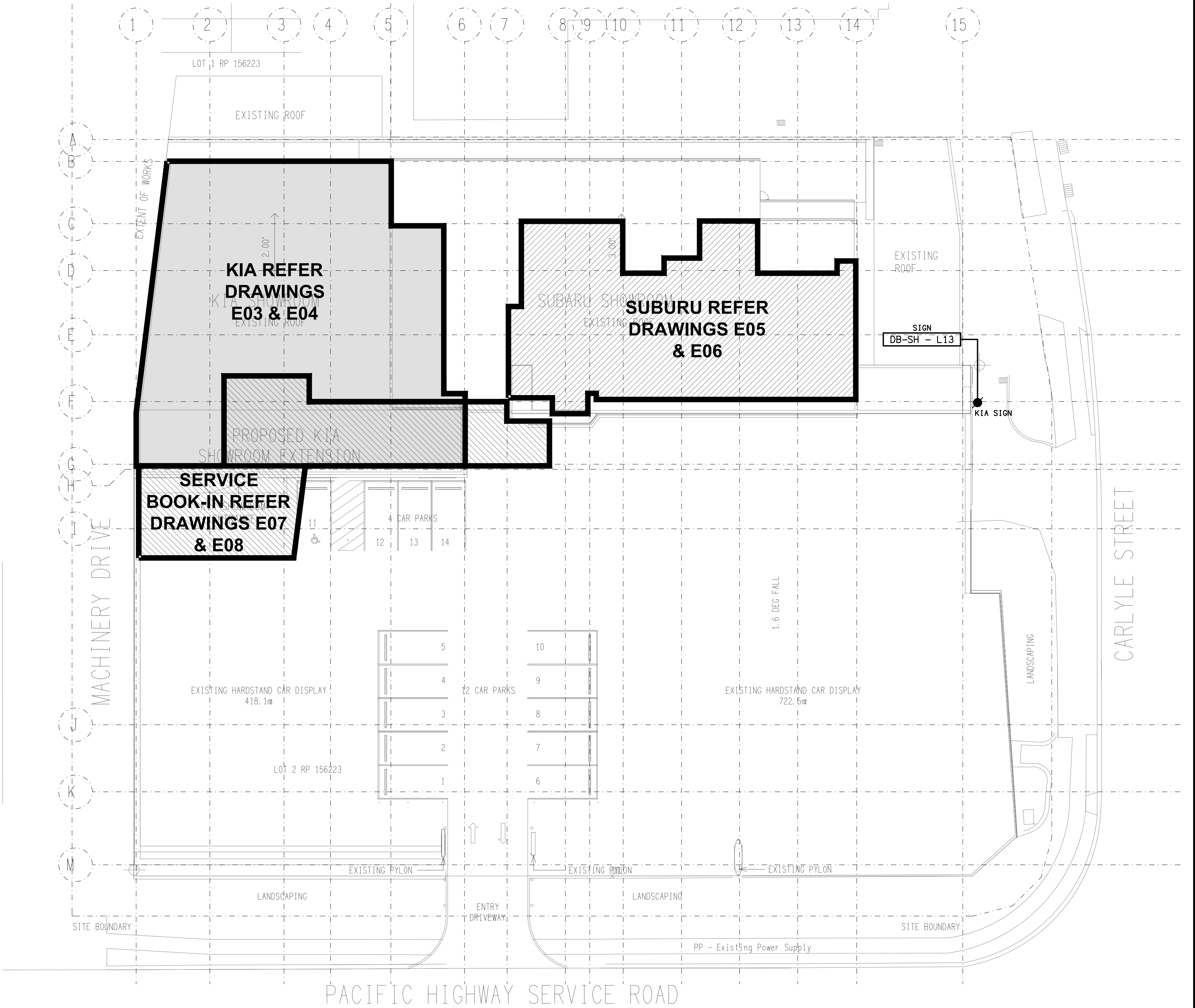
NOTE

ALL ELECTRICAL PENETRATIONS THROUGH THE ROOF SHEETING ARE TO BE IN LINE WITH THE STRUCTURAL OR MECHANICAL SERVICES PENETRATIONS TO AVOID DEDICATED FLASHINGS FOR THE ELECTRICAL SERVICES.



ELEVATION

PACIFIC HIGHWAY SERVICE ROAD SIDE
SCALE 1:200

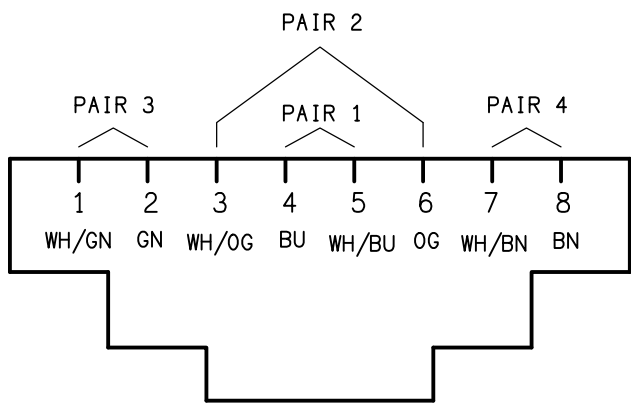


SITE PLAN

KIA & SUBARU SHOWROOMS
SCALE 1:200

SCHEMATIC

RJ45 PINOUT CONFIGURATION
NOT TO SCALE



ELECTRICAL DESIGN GROUP BRISBANE
PTY LTD
ACN 092 710 793
TRADING AS:
ELECTRICAL DESIGN GROUP

THE COPYRIGHT OF THIS DRAWING
REMAINS THE PROPERTY OF THE
ELECTRICAL DESIGN GROUP.
USE FIGURED DIMENSIONS
IN PREFERENCE TO SCALE.
ALL DIMENSIONS TO BE
VERIFIED ONSITE.

ELECTRICAL DESIGN GROUP
ELECTRICAL BUILDING SERVICES CONSULTANTS
BRISBANE GOLD COAST

P.O.Box 15, Sherwood Q.4075
Phone: (07) 3278 4375
Email: brisbane@edg.net.au
Web: www.edg.net.au

PROJECT:
AUTOPACT KIA SPRINGWOOD

3477-3483 PACIFIC HIGHWAY, SLACKS CREEK

B	CONSTRUCTION	30/06/2025
REV:	DESCRIPTION:	DATE:

DRAWING:
**ELECTRICAL SERVICES
LEGEND & SITE PLAN**

SCALE:
1:200

AT A1

PROJECT NO:
C3403a

DRAWING NO:
E01

REVISION:
B

NOTES

1. EXTENT OF WORKS

THE ELECTRICAL SERVICES SUB-CONTRACT INCLUDES BUT IS NOT LIMITED TO THE FOLLOWING:

- SURVEY OF ALL EXISTING UNDERGROUND SERVICES IN THE VICINITY OF THE WORKS.
- SUPPLY AND INSTALLATION OF ALL COMPONENTS FORMING PART OF THE ELECTRICAL SERVICES.
- CO-ORDINATION.
- INSPECTIONS.
- TESTING AND COMMISSIONING.
- MAINTENANCE.
- AS BUILT DRAWINGS.
- MAINTENANCE MANUAL.
- CABLING, CABLE SUPPORT SYSTEMS AND ACCESS.
- POWER DISTRIBUTION.
- LIGHTING.
- COMMUNICATIONS CABLING.
- FIRE ALARM AND DETECTION SERVICES.
- MATV CABLING.
- MODIFICATION, RELOCATION AND EXTENSION AS NECESSARY OF ALL EXISTING SERVICES THAT ARE IMPACTED BY THE WORKS OR REQUIRED TO BE EXTENDED BY THE WORKS.
- REMOVAL OF ALL EXISTING SERVICES MADE REDUNDANT BY THE WORKS.
- ANY TEMPORARY WORKS REQUIRED TO KEEP THE SITE OPERATING DURING THE CONSTRUCTION PROCESS.
- ALL MINOR COMPONENTS AND INCIDENTAL WORKS NOT SPECIFICALLY REFERRED TO, HOWEVER NECESSARY TO COMPLETE THE ELECTRICAL SERVICES INSTALLATION SUCH THAT IT IS HANDED OVER COMPLETE, OPERATIONAL AND FIT FOR THE INTENDED USE.

SUPPLY ALL LABOUR, MATERIALS, EQUIPMENT, AND ALL OTHER ITEMS, WHETHER MENTIONED IN DETAIL OR NOT, REQUIRED FOR THE SATISFACTORY COMPLETION OF THE ELECTRICAL SERVICES INSTALLATION, LEAVING IN FULL WORKING ORDER TO THE SATISFACTION OF THE PROJECT MANAGER.

PRIOR TO COMMENCING WORK CONSULT THE SITES MANAGEMENT FOR ANY HAZARDOUS MATERIAL AND OR ASBESTOS REGISTERS AS WELL AS UNDERTAKE A THOROUGH INSPECTION OF THE SITE TO IDENTIFY ANY POTENTIAL HAZARDOUS MATERIALS, ASBESTOS AND HEALTH OR SAFETY RISKS. ADVISE THE CONTRACTOR OF ANY POTENTIAL HAZARDOUS MATERIALS, ASBESTOS AND HEALTH OR SAFETY RISKS IF IDENTIFIED AND DO NOT COMMENCE WORK UNTIL AN APPROPRIATE MANAGEMENT PLAN HAS BEEN DEVELOPED AND AGREED TO BY ALL PARTIES

PRIOR TO COMMENCING WORK UNDERTAKE A DETAILED ACTIVE SURVEY OF ALL EXISTING UNDERGROUND SERVICES IN THE VICINITY OF THE WORKS. IDENTIFY ALL EXISTING UNDERGROUND SERVICES WITHIN THE SCOPE OF THE WORKS. THE SURVEY WILL NEED TO INCLUDE VACUUM EXCAVATION. PROVIDE A COPY OF THE SURVEY FOR APPROVAL INCLUDING ALL PITS AND CONDUITS DIMENSIONED OFF EXISTING BUILDINGS, THE CONTENTS OF THE CONDUITS INCLUDING THE CABLE TYPE SOURCE AND DESTINATION.

SUPPLY ALL LABOUR, MATERIALS, EQUIPMENT, AND ALL OTHER ITEMS, WHETHER MENTIONED IN DETAIL OR NOT, REQUIRED FOR THE SATISFACTORY COMPLETION OF THE ELECTRICAL SERVICES INSTALLATION, LEAVING IN FULL WORKING ORDER TO THE SATISFACTION OF THE PROJECT MANAGER.

ACCEPT FULL RESPONSIBILITY FOR LIASING, ARRANGING AND CO-ORDINATION OF ALL WORKS THAT HAVE AN EFFECT ON OR WILL BE AFFECTED BY THE ELECTRICAL SERVICES.

CONFIRM THE POSITION OF ALL OUTLETS ON SITE WITH THE OPERATOR PRIOR TO ROUGH-IN.

ANY INTERRUPTION TO ANY ELECTRICAL SERVICES OUTSIDE OF THE AREA OF WORKS MUST BE RESTRICTED TO OUTSIDE OF THE FACILITIES OPERATING HOURS AND MUST BE ADVISED TO THE OPERATOR IN WRITING TWO WEEKS PRIOR AND LIMITED TO FOUR HOURS.

2. WORKMANSHIP

ENSURE THAT THE ELECTRICAL WORK IS PERFORMED BY THE HOLDER OF A CURRENT ELECTRICAL SUB CONTRACTOR LICENSE AND THE SERVICES COVERED BY THE ACMA IS PERFORMED BY THE HOLDER OF THE APPROPRIATE CURRENT ACMA LICENSE. ENSURE THE INSTALLATION AND ALL COMPONENTS, FIXTURES, FITTINGS, OUTLETS AND CABLES ARE SUPPLIED AND INSTALLED TO A HIGH STANDARD THROUGHOUT, AND INSTALLED IN A NEAT AND TRADESMAN LIKE MANNER, TO THE CURRENT INDUSTRY STANDARDS. ENSURE ALL MATERIALS AND COMPONENTS OF A SIMILAR TYPE ARE OF THE SAME MANUFACTURER AND INSTALLED IN A UNIFORM MANNER.

IT IS THE ELECTRICAL SUB CONTRACTOR'S RESPONSIBILITY TO ENSURE THAT THE INSTALLATION IS FIT FOR PURPOSE AND IS PROVIDED AS A COMPLETE WORKING INSTALLATION. IT IS THE ELECTRICAL SUB CONTRACTOR'S RESPONSIBILITY TO PROVIDE ALL COMPONENTS, FITTINGS, FIXTURES, SYSTEMS, PROGRAMMING ETC IRRESPECTIVE OF THE LEVEL DETAILED IN THE DOCUMENTS SUCH THAT THE INSTALLATION IS PROVIDED AS A COMPLETE WORKING INSTALLATION.

CONCEAL ALL WIRING AND CONDUITS. EXPOSED CABLING OR CONDUITS ARE GENERALLY NOT ACCEPTABLE. IT IS NOTED THAT CHASING AND REINSTATEMENT WILL BE REQUIRED. ENSURE ALL COMPONENTS, EQUIPMENT AND MATERIALS SUPPLIED ARE NEW, UNUSED, DESIGNED AND SELECTED TO ENSURE SATISFACTORY OPERATION UNDER VARYING ATMOSPHERIC, CLIMATIC, HUMID TROPICAL CONDITIONS WITHOUT DISTORTION AND DETERIORATION IN ANY PART AFFECTING EFFICIENCY AND RELIABILITY OF THE SYSTEMS. DESIGN AND SELECT ALL EQUIPMENT TO PROVIDE THE NECESSARY SAFETY TO HUMAN LIFE AND PROPERTY DURING OPERATION AND MAINTENANCE WITH PARTICULAR ATTENTION GIVEN TO ELECTRICAL SAFETY AND SEGREGATION PRECAUTIONS.

CHECK THE FINISHED PAINTWORK AROUND THE AREA OF EACH INSTALLATION AND TOUCH UP ALL DAMAGED PARTS AND FINISHES AFTER THE INSTALLATION OF THE ELECTRICAL SERVICES.

ALL WORKS ARE TO BE CARRIED OUT IN ACCORDANCE WITH THE BUILDER'S PROGRAM. ENSURE ALL FINAL LOCATIONS OF OUTLETS AND FITTINGS ARE CO-ORDINATED ONSITE WITH THE ARCHITECT AND ALL OTHER SERVICES, TO THE APPROVAL OF THE PROJECT MANAGER. ALLOW TO CO-ORDINATE THE FINAL LOCATION OF ALL EQUIPMENT, FITTINGS, & OUTLETS, SUCH THAT THEY ARE INSTALLED IN ACCORDANCE WITH THE AS3000 RESTRICTED ZONES, AND ARE NOT COVERED INAPPROPRIATELY.

ENSURE THAT ALL METAL SURFACES ARE SUITABLY PROTECTED AGAINST CORROSION, AND THAT ALL PLASTIC MATERIALS ARE UV STABILISED.

PROVIDE ALL MATERIALS AS NEW, AND OF THE HIGHEST CLASS AVAILABLE FOR THEIR RESPECTIVE TYPES. ENSURE ALL ASPECTS OF THE WORK ARE OF A HIGH STANDARD THROUGHOUT, AND INSTALLED IN A NEAT AND TRADESMAN LIKE MANNER, TO THE CURRENT INDUSTRY STANDARDS.

IRRESPECTIVE OF INFORMATION CONTAINED IN THE ELECTRICAL SERVICES DOCUMENTS OR IN INSTRUCTIONS, IT IS THE ELECTRICAL SUB CONTRACTOR'S RESPONSIBILITY TO ENSURE ALL ELECTRICAL SERVICES WORKS ARE INSTALLED IN ACCORDANCE WITH THE REQUIREMENTS OF THE FOLLOWING. REFER ANY DISCREPANCIES BETWEEN THE REQUIREMENTS OF THE FOLLOWING AND/OR THE ELECTRICAL SERVICES DOCUMENTS AND INSTRUCTIONS TO THE ARCHITECT FOR CLARIFICATION PRIOR TO THE PLACING OF ORDERS, FABRICATION OR INSTALLATION OF THE ITEMS/METHODS IN DISCREPANCY.

- NCC BUILDING CODE OF AUSTRALIA.
- ELECTRICITY ACT.
- ELECTRICAL SAFETY ACT.
- ENERGEX REQUIREMENTS.
- THE QUEENSLAND ELECTRICITY CONNECTION MANUAL V4 (QECM) AND THE NATIONAL ELECTRICITY METERING STANDARDS (NEM).
- AS/NZS3000.
- AS3008.
- LOCAL BRIGADE.
- WORKPLACE HEALTH AND SAFETY ACT.
- TELECOMMUNICATIONS ACT.
- ACMA REQUIREMENTS.

NOTES

3. AUTHORITIES

ENSURE ALL OF THE ELECTRICAL SERVICES COMPLY WITH THE REQUIREMENTS OF ALL REGULATORY AUTHORITIES HAVING JURISDICTION OVER THE SITE INCLUDING BUT NOT LIMITED TO THE FOLLOWING:

- ACMA.
- LOCAL COUNCIL.
- ENERGEX.
- STATE GOVERNMENT DEPARTMENT OF ENVIRONMENT AND HERITAGE.
- QLD GOVERNMENT, DIVISION OF WORKPLACE, HEALTH AND SAFETY.
- QLD FIRE AND EMERGENCY SERVICES.

4. CABLES

UNLESS OTHERWISE SPECIFIED, INSTALL AND TERMINATE CABLES IN ACCORDANCE WITH THE MANUFACTURERS' RECOMMENDATIONS. DETERMINE THE FINAL ROUTES TO SUIT THE BUILDING STRUCTURE AND SITE CONDITIONS. UNLESS NOTED OTHERWISE, PROVIDE ALL 240 VOLT POWER AND LIGHTING WIRING AS 2.5mm² TWIN & EARTH STRANDED COPPER CONDUCTORS, PVC INSULATED 0.6/1kV V75 GRADE TO AS3174, PROTECTED BY A 20 AMP CIRCUIT BREAKER. ALL CONDUIT AND FITTINGS TO BE RIGID UPVC TO AS2053, UNLESS NOTED OTHERWISE.

5. POWER DISTRIBUTION

MODIFY DISTRIBUTION BOARDS DB-SH AND DB-0 TO ACCOMMODATE THE NEW AND MODIFIED CIRCUITS. ALL NEW CIRCUITS ARE TO BE SINGLE PHASE 20 AMP RCBO PROTECTED 2.5MM. IT IS ACCEPTABLE TO UTILISE EXISTING CIRCUITS IF THEY ARE SPARE / HAVE SUFFICIENT CAPACITY, CONTROL FUNCTION AND A SIMILAR USE. THE POWER DISTRIBUTION COMPONENT OF THE ELECTRICAL SERVICES SUB-CONTRACT INCLUDES THOUGH IS NOT LIMITED TO THE FOLLOWING EXTENT OF WORK:

- MODIFICATION TO DB-SH AND DB-0.
- EARTHING.
- CIRCUITS.
- ISOLATORS AND OUTLETS.
- FLOOR BOXES.
- CABLE ACCESS WAYS.
- TESTING AND COMMISSIONING.
- REMOVAL OF ALL EXISTING SERVICES MADE REDUNDANT BY THE WORKS.
- THERMOSCAN ALL OF THE SWITCHBOARDS SUPPLIED OR MODIFIED AS PART OF THE WORKS WITHIN THE FIRST WEEK AFTER PRACTICAL COMPLETION AND SUBMIT THE THERMOSCAN FOR APPROVAL.

6. LIGHTING

THE LIGHTING COMPONENT OF THE ELECTRICAL SERVICES SUB-CONTRACT INCLUDES ALL OF THE INTERNAL LIGHT FITTINGS, LAMPS AND ACCESSORIES. PROVIDE ALL NECESSARY ACCESSORIES TO FACILITATE THE COMPLETE LIGHTING INSTALLATION. THE LIGHTING COMPONENT OF THE ELECTRICAL SERVICES SUB-CONTRACT INCLUDES THOUGH IT IS NOT LIMITED TO THE FOLLOWING EXTENT OF WORK:

- EMERGENCY AND EXIT LIGHTING.
- EARTHING OF THE LIGHTING INSTALLATION.
- LIGHTING CONTROL.
- LIGHTING SUBCIRCUITS.
- TESTING AND COMMISSIONING.
- REMOVAL OF ALL EXISTING SERVICES MADE REDUNDANT BY THE WORKS.

UTILISE THE EXISTING SIGNAGE CONTROL SYSTEM TO CONTROL THE NEW SIGNAGE CIRCUITS.

MODIFY THE EXISTING SINGLE POINT EMERGENCY LIGHTING SYSTEM SUCH THAT IT COMPLIES WITH THE LATEST ISSUE OF ALL PARTS AS2293 AND THE RELEVANT PARTS OF THE NCC BCA. INSTALL EMERGENCY LIGHT FITTINGS NOMINATED AS MAINTAINED WITH THE LAMP PERMANENTLY ON SUPPLIED VIA AN UNSWITCHED ACTIVE MAINS SUPPLY WHEN THE MAINS SUPPLY IS AVAILABLE. WHEN THE MAINS SUPPLY IS NOT AVAILABLE, THE LAMP IS TO REMAIN ON SUPPLIED BY THE EMERGENCY PACK. SINGLE LAMP MAINTAINED EMERGENCY LIGHTS ARE NOT SWITCHED WITH THE LOCAL GENERAL AREA LIGHTING. (THE LAMP IS ALWAYS ON.)

INSTALL EMERGENCY LIGHT FITTINGS NOMINATED AS NON-MAINTAINED AS FOLLOWS:

- IF THE FITTING IS NOT BEING SWITCHED, THE LAMP IS TO REMAIN OFF WHEN THE MAINS SUPPLY IS AVAILABLE. WHEN THE MAINS SUPPLY IS NOT AVAILABLE THE LAMP IS TO BE SWITCHED ON SUPPLIED BY THE EMERGENCY PACK. UNSWITCHED SINGLE LAMP NON-MAINTAINED EMERGENCY LIGHTS ARE NOT SWITCHED WITH THE LOCAL GENERAL AREA LIGHTING. (THE LAMP IS ON ONLY WHEN THE MAINS SUPPLY IS NOT AVAILABLE.)
- IF THE FITTING IS BEING SWITCHED, THE LAMP IS TO BE SUPPLIED AND CONTROLLED WITH THE LOCAL GENERAL AREA LIGHTING WHEN THE MAINS SUPPLY IS AVAILABLE. WHEN THE MAINS SUPPLY IS NOT AVAILABLE THE LAMP IS TO BE SWITCHED ON, SUPPLIED BY THE EMERGENCY PACK. (THE LAMP IS ON WHEN TURNED ON WITH THE LOCAL GENERAL LIGHTING OR THE MAIN SUPPLY IS NOT AVAILABLE.)

7. COMMUNICATIONS CABLING

THE COMMUNICATIONS CABLING COMPONENT OF THIS CONTRACT INCLUDES NEW COMMUNICATION CAT 6 RJ45 OUTLETS CABLED TO MODULAR PATCH PANELS IN THE EXISTING COMMUNICATIONS RACKS CR-A AND CR-B VIA CAT 6 UTP CABLING.

PROVIDE THE STRUCTURED CABLING SOLUTION TO MATCH THE EXISTING USED ACROSS THE SITE AND PROVIDED IT WITH A MANUFACTURERS 15 YEAR WARRANTY.

THE COMMUNICATIONS CABLING COMPONENT OF THIS CONTRACT INCLUDES, BUT IS NOT LIMITED TO THE FOLLOWING EXTENT OF WORK:

- CAT 6 COMMUNICATIONS OUTLETS.
- CAT 6 CABLING.
- MODIFICATIONS TO COMMUNICATIONS RACK CR-A AND CR-B TO ACCOMMODATE THE NEW PATCH PANELS.
- PATCH PANELS.
- LABELLING.
- TESTING AND COMMISSIONING.
- REMOVAL OF ALL EXISTING SERVICES MADE REDUNDANT BY THE WORKS.

ALL COMMUNICATIONS CABLING IS TO BE UNDERTAKEN BY AN ACMA LICENCE HOLDER. THE PATCH LEADS, FLY LEADS, POE SWITCH AND UPS WILL BE PROVIDED BY THE OPERATOR.

8. MATV CABLING.

THE MATV CABLING COMPONENT OF THIS CONTRACT INCLUDES NEW MATV OUTLETS CABLED IN STAR CONFIGURATION VIA RG6 CABLE TO THE EXISTING PASSIVE EQUIPMENT. UPGRADE THE PASSIVE EQUIPMENT AS NECESSARY TO ACCOMMODATE THE NEW MATV OUTLETS.

THE MATV CABLING COMPONENT OF THIS CONTRACT INCLUDES, BUT IS NOT LIMITED TO THE FOLLOWING EXTENT OF WORK:

- MATV OUTLETS.
- RG6 CABLING.
- MODIFICATIONS TO THE EXISTING PASSIVE EQUIPMENT AS NECESSARY TO ACCOMMODATE THE NEW MATV OUTLETS.
- TESTING AND COMMISSIONING.
- REMOVAL OF ALL EXISTING SERVICES MADE REDUNDANT BY THE WORKS.

ALL MATV CABLING IS TO BE UNDERTAKEN BY AN ACMA LICENCE HOLDER.

NOTES

9. FIRE ALARM AND DETECTION

THE FIRE ALARM AND DETECTION COMPONENT OF THIS CONTRACT INCLUDES UPGRADING / MODIFYING / EXTENDING THE EXISTING FIRE ALARM AND DETECTION SYSTEM TO ACCOMMODATE THE CHANGES AND EXTENSION IN ACCORDANCE WITH AS 1670.1-2018.

THE FIRE ALARM AND DETECTING COMPONENT OF THIS CONTRACT INCLUDES, BUT IS NOT LIMITED TO THE FOLLOWING EXTENT OF WORK:

- DETECTORS.
- CONCEALED SPACE DETECTORS.
- ALARM SPEAKERS.
- MODIFICATION TO THE FIP AS NECESSARY.
- UPDATE THE FIP ZONE PLAN AS NECESSARY.
- TESTING AND COMMISSIONING.
- REMOVAL OF ALL EXISTING SERVICES MADE REDUNDANT BY THE WORKS.

PRIOR TO PRACTICAL COMPLETION CERTIFY THE INSTALLATION ON A FORM 16 AS COMPLYING WITH THE RELEVANT CODES AND STANDARDS AND INCLUDE A COPY OF THE CERTIFICATION IN THE MANUAL.

IRRESPECTIVE OF THE SERVICES DETAILED ON THE DRAWING, THE FIRE ALARM AND DETECTION SYSTEM MUST BE COMPLIANT WITH AS1670.1:2024 AND THE REQUIREMENTS OF THE QUEENSLAND FIRE AND EMERGENCY SERVICES.

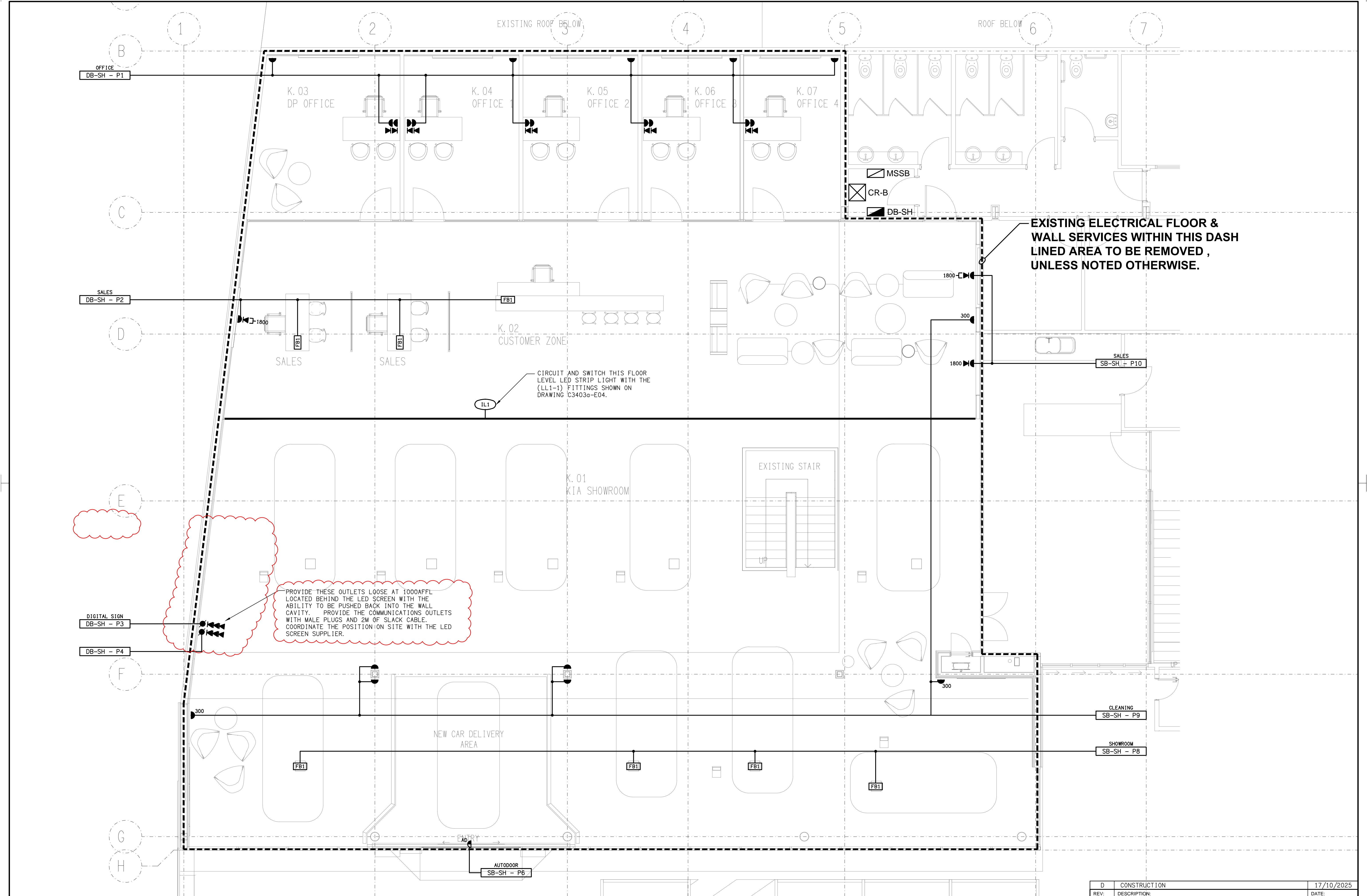
THE CONTRACTOR IS RESPONSIBLE FOR PAYING ANY CALL OUT FEES ISSUED BY QFES THAT ARE THE RESULT OF DEFECTIVE WORKS, CABLING, OR SYSTEM COMPONENTS

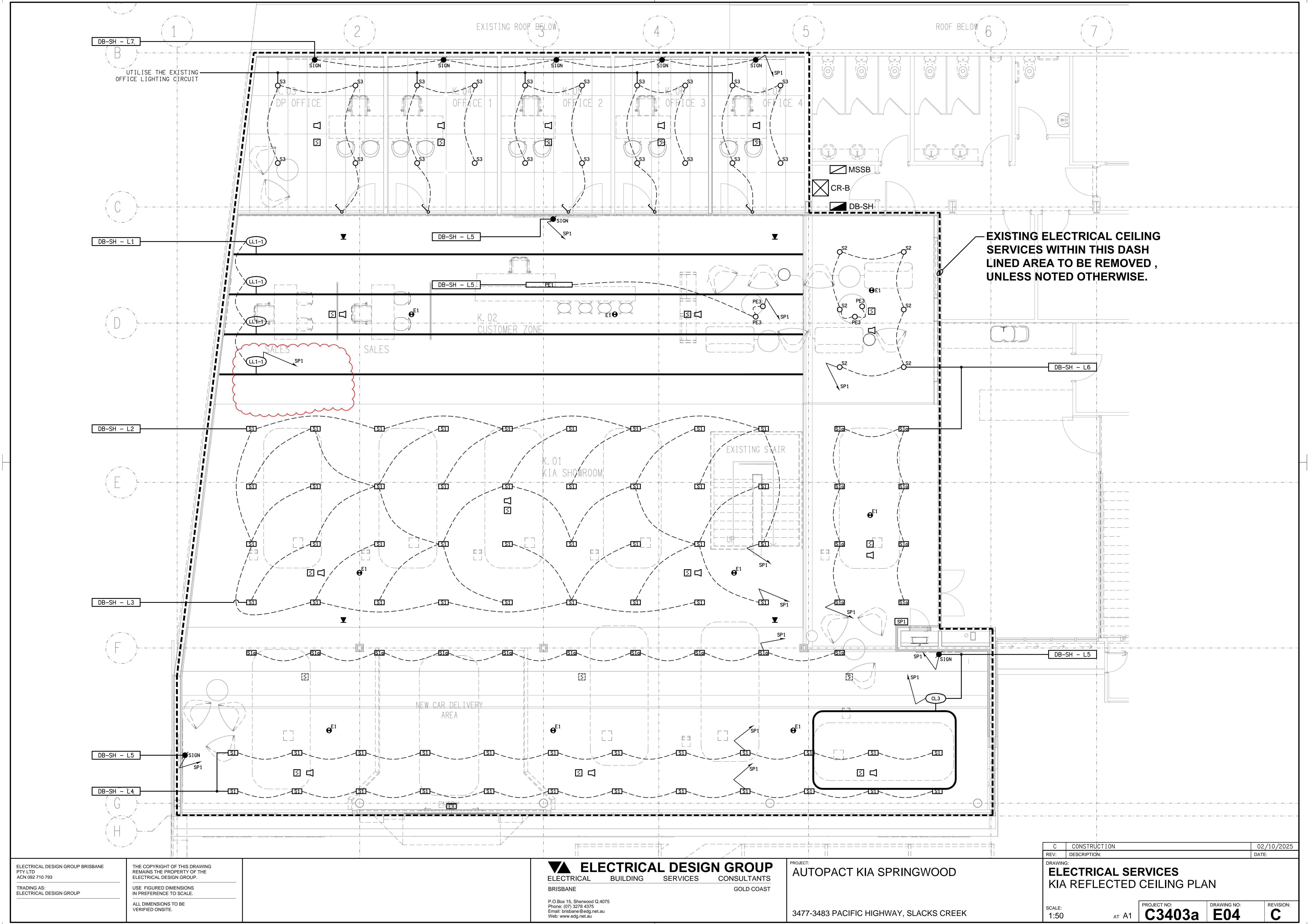
ENSURE ALL AS1670.1:2024 WORKS ARE UNDERTAKEN BY, OR UNDER THE DIRECTION OF A SUITABLY QUALIFIED AND EXPERIENCED FIRE ALARM SYSTEM INSTALLER WHO HOLD THE REQUIRED QBCC AND FIRE PROTECTION CONTRACTORS REGISTRATION BOARD OF QUEENSLAND INC REGISTRATIONS. IT IS THE CONTRACTOR'S RESPONSIBILITY TO ENSURE THAT THE FIRE ALARM INSTALLATION IS FIT FOR PURPOSE AND IS PROVIDED AS A COMPLETE WORKING INSTALLATION. IT IS THE CONTRACTOR'S RESPONSIBILITY TO PROVIDE ALL COMPONENTS, FITTINGS, FIXTURES, SYSTEMS, PROGRAMMING ETC IRRESPECTIVE OF THE LEVEL DETAILED IN THE DOCUMENTS SUCH THAT THE INSTALLATION IS PROVIDED AS A COMPLETE WORKING INSTALLATION.

10. ABBREVIATIONS

A - AMP CURRENT RATING
AB - MOUNT ABOVE BENCH.
AFFL - ABOVE FINISHED FLOOR LEVEL.
BB - MOUNT BELOW BENCH.
BH - MOUNT ON BULKHEAD.
CEIL - MOUNT ON CEILING.
CS - MOUNT WITHIN CEILING SPACE.
C/W - COMPLETE WITH.
DR - DRYER.
DW - DISHWASHER.
HWS - HOT WATER SYSTEM.
MCB - MINIATURE CIRCUIT BREAKER.
MCCB - MOLDED CASE CIRCUIT BREAKER.
MEN - MULTIPLE EARTH NEUTRAL LINK.
MSB - MAIN SWITCHBOARD.
MSSB - MECHANICAL SERVICES SWITCHBOARD.
MW - MICROWAVE.
N - NEON / LED INDICATOR WHEN ON.
NTS - NOT TO SCALE.
RCBO - CIRCUIT PROTECTED VIA A 30mA RESIDUAL CURRENT DEVICE INTEGRAL TO THE CIRCUIT BREAKER.
REF - REFRIGERATOR.
UNO - UNLESS NOTED OTHERWISE.
WP - WEATHERPROOF TO IP56 UNO.
500 - NUMBER DENOTES MOUNTING HEIGHT AFFL.

ELECTRICAL DESIGN GROUP BRISBANE PTY LTD ACN 092 710 793		THE COPYRIGHT OF THIS DRAWING REMAINS THE PROPERTY OF THE ELECTRICAL DESIGN GROUP.		PROJECT: AUTOPACT KIA SPRINGWOOD		B CONSTRUCTION 30/06/2025	
TRADING AS: ELECTRICAL DESIGN GROUP		USE FIGURED DIMENSIONS IN PREFERENCE TO SCALE.		REV: DESCRIPTION: DATE:		DRAWING: ELECTRICAL SERVICES NOTES	
ALL DIMENSIONS TO BE VERIFIED ONSITE.		P.O.Box 15, Sherwood Q.4075 Phone: (07) 3278 4375 Email: brisbane@edg.net.au Web: www.edg.net.au		3477-3483 PACIFIC HIGHWAY, SLACKS CREEK		SCALE: NOT TO SCALE AT A1	
		ELECTRICAL BUILDING SERVICES CONSULTANTS BRISBANE GOLD COAST				PROJECT NO: C3403a	
						DRAWING NO: E02	
						REVISION: B	





ELECTRICAL DESIGN GROUP BRISBANE
PTY LTD
ACN 092 710 793
TRADING AS:
ELECTRICAL DESIGN GROUP

THE COPYRIGHT OF THIS DRAWING
REMAINS THE PROPERTY OF THE
ELECTRICAL DESIGN GROUP.
USE FIGURED DIMENSIONS
IN PREFERENCE TO SCALE.
ALL DIMENSIONS TO BE
VERIFIED ONSITE.

ELECTRICAL DESIGN GROUP
ELECTRICAL BUILDING SERVICES CONSULTANTS
BRISBANE GOLD COAST

P.O.Box 15, Sherwood Q.4075
Phone: (07) 3278 4375
Email: brisbane@edg.net.au
Web: www.edg.net.au

PROJECT:
AUTOPACT KIA SPRINGWOOD

3477-3483 PACIFIC HIGHWAY, SLACKS CREEK

REV.	DESCRIPTION:	DATE:
C	CONSTRUCTION	02/10/2025

DRAWING:
ELECTRICAL SERVICES
KIA REFLECTED CEILING PLAN

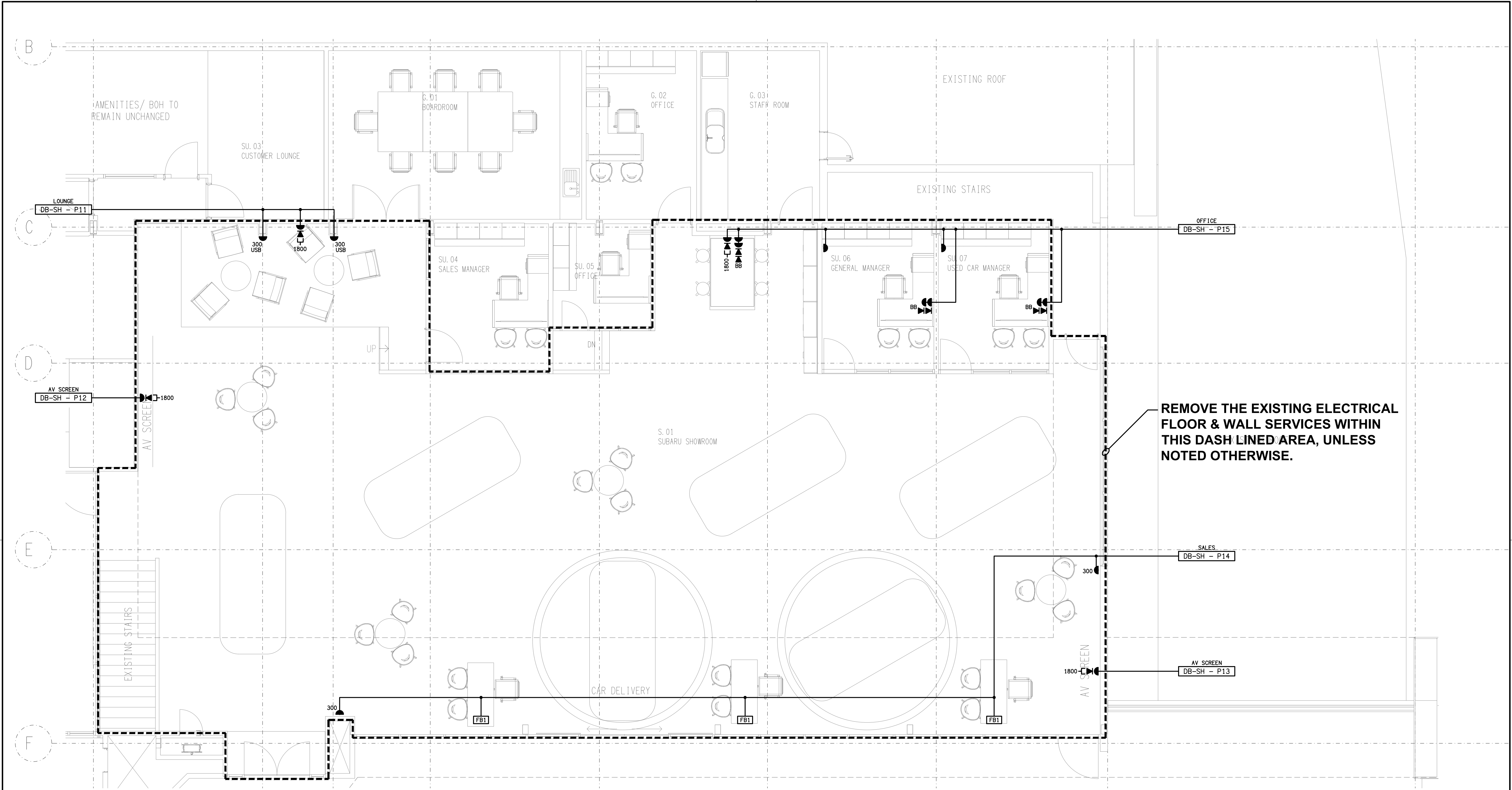
SCALE:
1:50

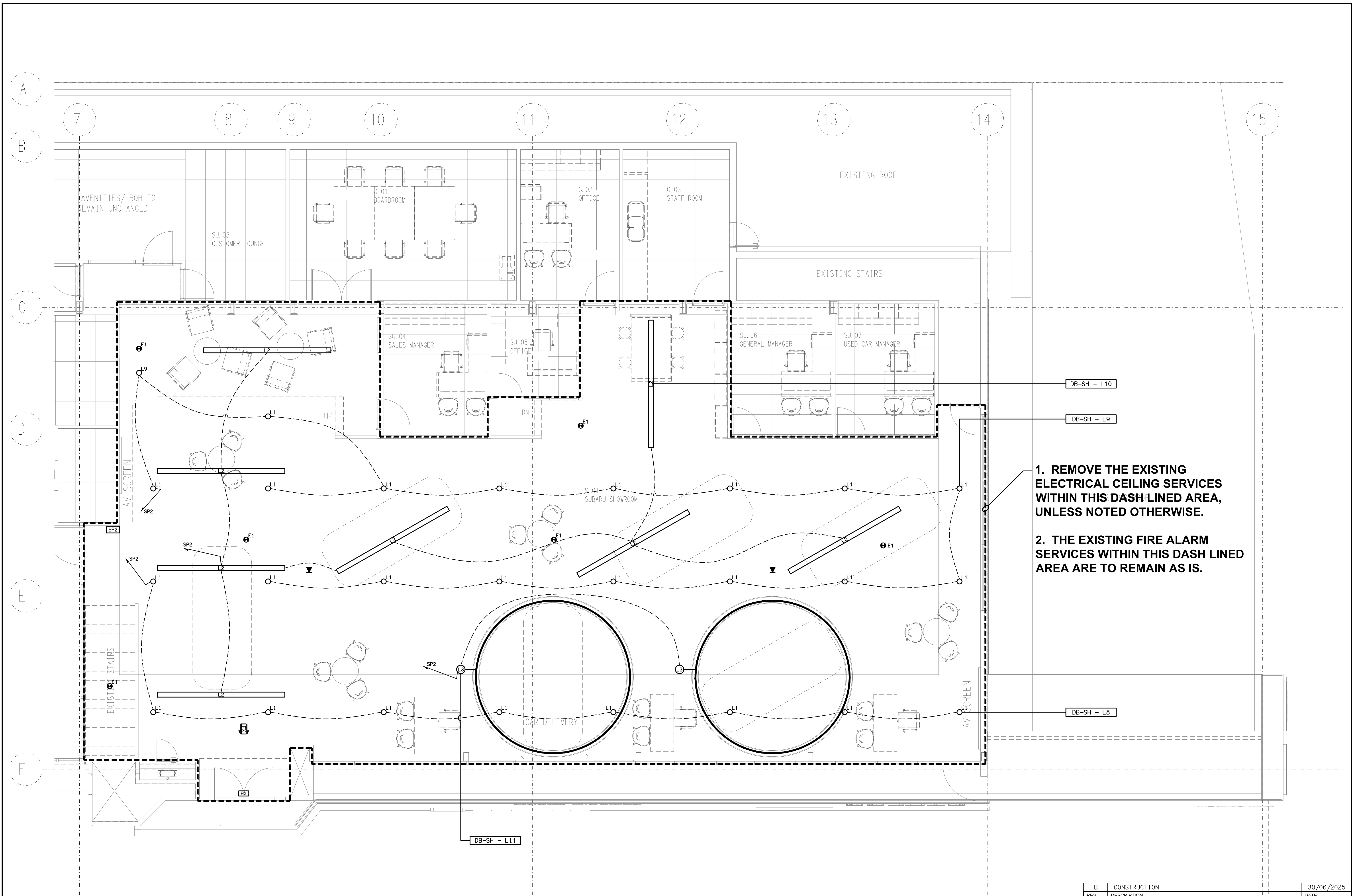
AT A1

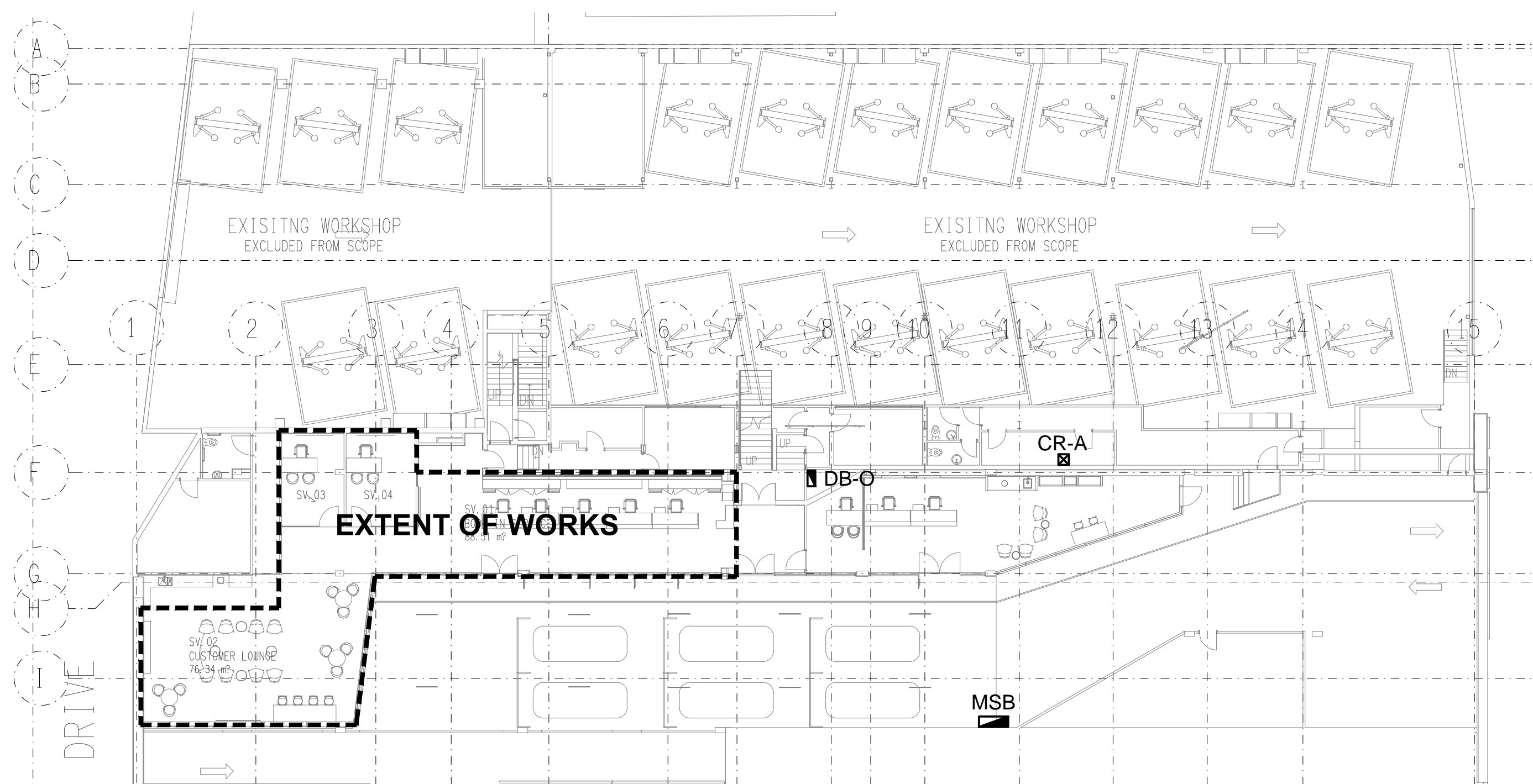
PROJECT NO:
C3403a

DRAWING NO:
E04

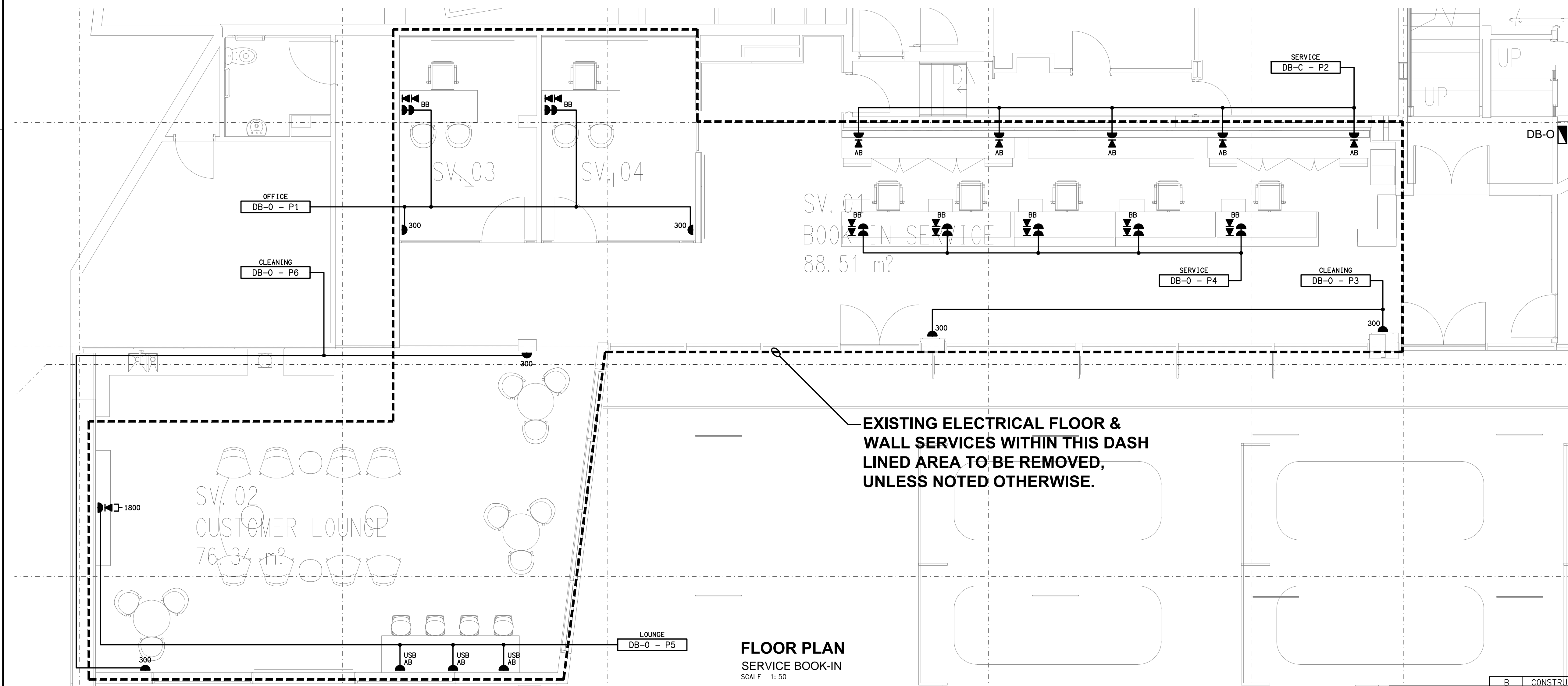
REVISION:
C







LOCATION PLAN
SERVICE BOOK-IN ELECTRICAL EQUIPMENT
SCALE 1: 200



FLOOR PLAN
SERVICE BOOK-IN
SCALE 1: 50

ELECTRICAL DESIGN GROUP BRISBANE
PTY LTD
ACN 092 710 793
TRADING AS:
ELECTRICAL DESIGN GROUP

THE COPYRIGHT OF THIS DRAWING
REMAINS THE PROPERTY OF THE
ELECTRICAL DESIGN GROUP.
USE FIGURED DIMENSIONS
IN PREFERENCE TO SCALE.
ALL DIMENSIONS TO BE
VERIFIED ONSITE.

ELECTRICAL DESIGN GROUP
ELECTRICAL BUILDING SERVICES CONSULTANTS
BRISBANE GOLD COAST

P.O.Box 15, Sherwood Q.4075
Phone: (07) 3278 4375
Email: brisbane@edg.net.au
Web: www.edg.net.au

PROJECT:
AUTOPACT KIA SPRINGWOOD

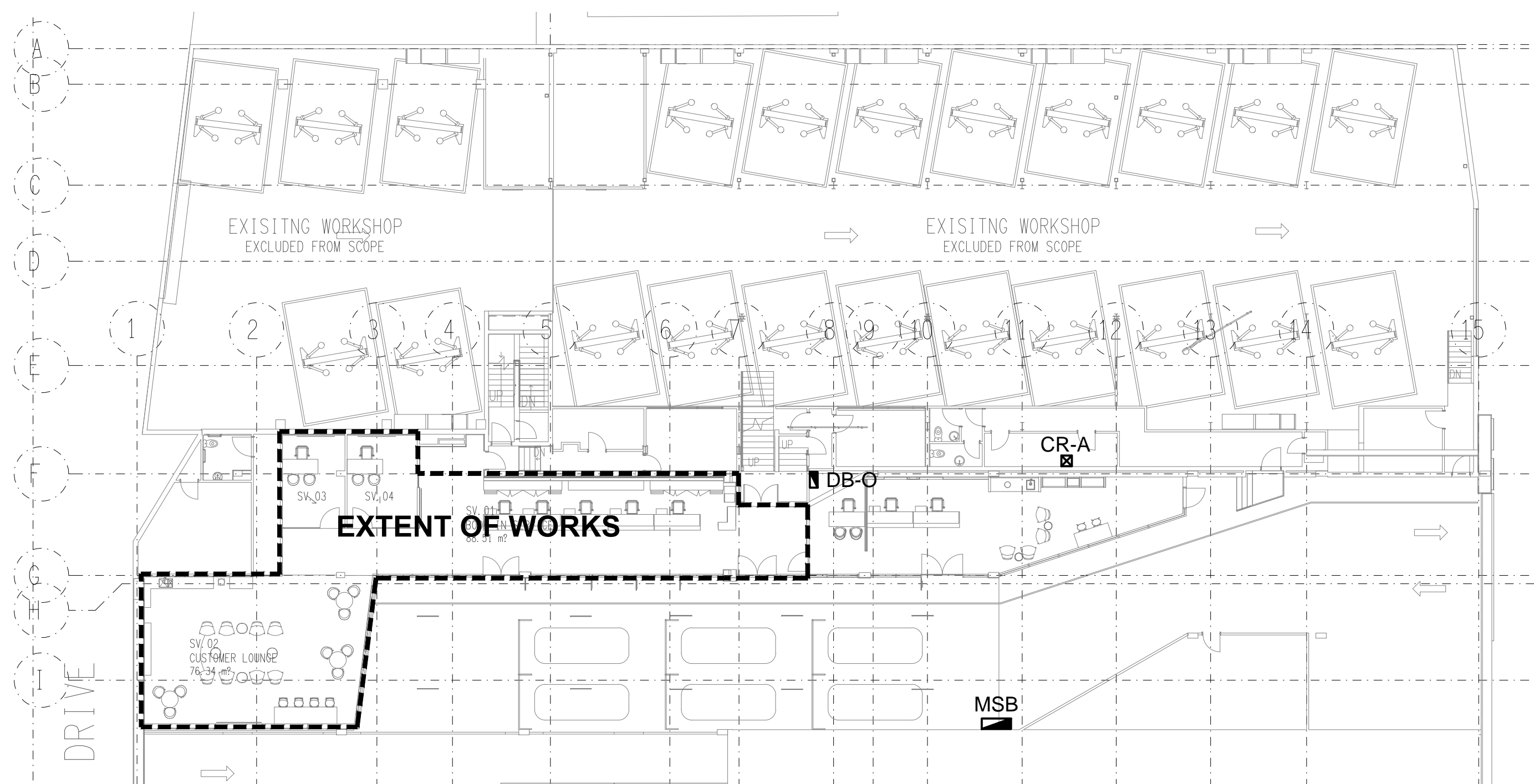
3477-3483 PACIFIC HIGHWAY, SLACKS CREEK

B	CONSTRUCTION	30/06/2025
REV.	DESCRIPTION:	DATE:

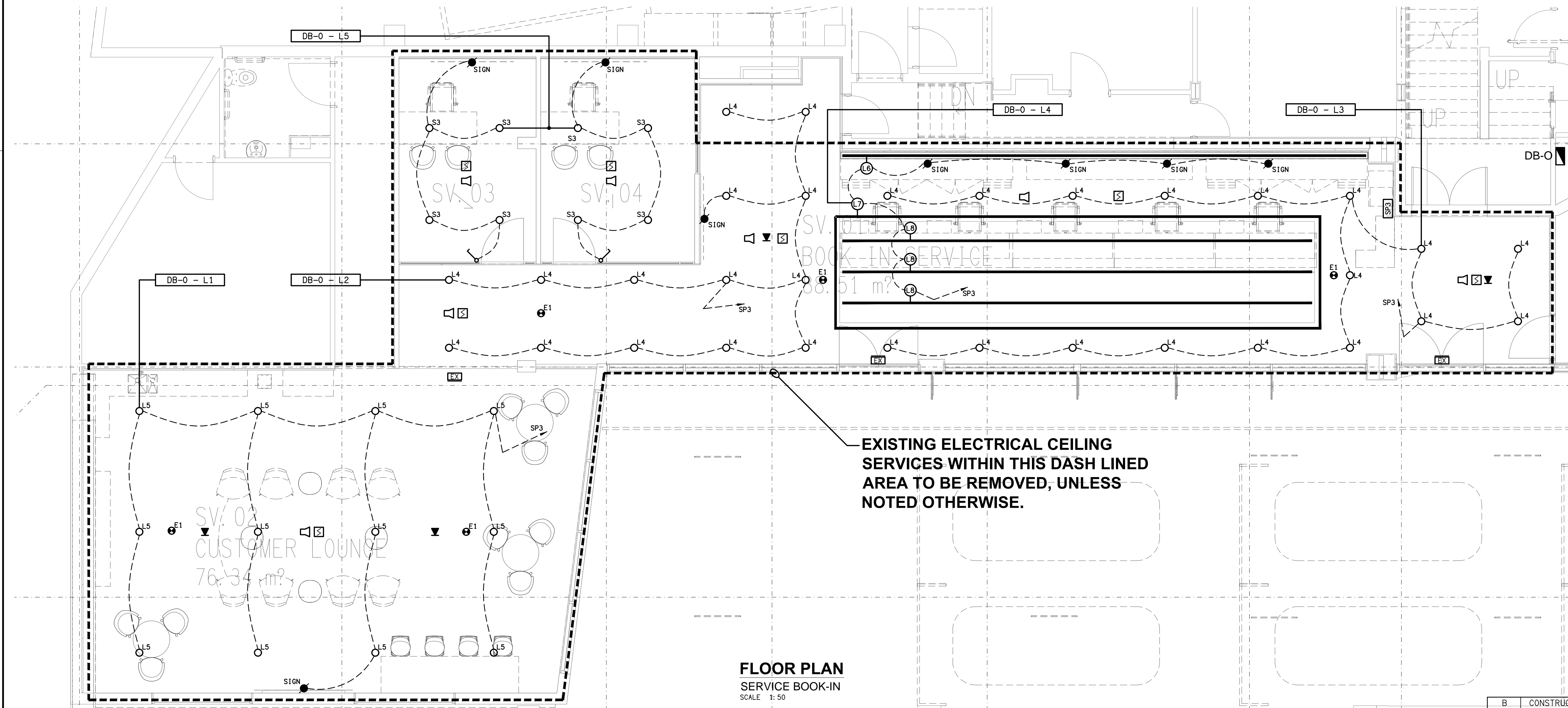
DRAWING:
ELECTRICAL SERVICES
SERVICE BOOK-IN FLOOR PLAN

SCALE:
1:50 UNO AT A1

PROJECT NO:
C3403a
DRAWING NO:
E07
REVISION:
B



LOCATION PLAN
SERVICE BOOK-IN ELECTRICAL EQUIPMENT
SCALE 1: 200



FLOOR PLAN
SERVICE BOOK-IN
SCALE 1: 50