



# ELECTRICAL DESIGN GROUP

ELECTRICAL BUILDING SERVICES CONSULTANTS

P.O. Box 15, SHERWOOD Q. 4075

Phone: (07) 3278 4375

Website: www.edg.net.au Email: brisbane@edg.net.au

C3454a - MOTORAMA - HILLCREST KIA

C3454a-0001(G).xls

## ELECTRICAL SERVICES CONTRACT DOCUMENT SCHEDULE

REVISION G - 07 OCTOBER 2025

ISSUING INFORMATION				DATE OF ISSUE							
	DAY	19	21	19	01	04	07	07			
	MONTH	05	05	06	09	09	10	10			
	YEAR	25	25	25	25	25	25	25			
REASON FOR ISSUE				P	T	T	C	C	C		
A = APPROVAL C = CONSTRUCTION N = COORDINATION				P = PRELIMINARY T = TENDER							

DISTRIBUTION				NUMBER OF COPIES							
WWW.EDG.NET.AU				1E	1E	1E	1E	1E	1E	1E	
ACTUATED DESIGN				1E	1E	1E	1E	1E	1E	1E	
P = PRINT T = TRACING D = DISC				E = EMAIL F = FAX							

DOCUMENTS		REVISION									
C3454a-E01.dwg	LEGEND & NOTES	A	B		C		D				
C3454a-E02.dwg	SITE PLAN	A	B	C	D						
C3454a-E03.dwg	EXISTING PLANS	A	B		C						
C3454a-E04.dwg	PROPOSED PLANS	A	B		C	D	E	F			
C3454a-0001.xls	CONTRACT DOCUMENT SCHEDULE	A	B	C	D	E	F	G			
C3454a-0002.xls	EQUIPMENT SCHEDULE	A	B				C				
C3454a-0004.xls	DISTRIBUTION BOARD DB-N SCHEDULE		A		B		C				
C3454a-0001.zip	FITTING & OUTLET DATASHEETS		A								



# ELECTRICAL DESIGN GROUP

ELECTRICAL BUILDING SERVICES CONSULTANTS

P.O. Box 15, SHERWOOD Q. 4075

Phone: (07) 3278 4375 Fax: (07) 3716 0222

Web Site: [www.edg.net.au](http://www.edg.net.au) Email: [brisbane@edg.net.au](mailto:brisbane@edg.net.au)

C3454a - MOTORAMA - HILLCREST KIA

C3454a-0002(C).xls

## ELECTRICAL EQUIPMENT SCHEDULE

REVISION C - 07 OCTOBER 2025

THE EQUIPMENT SUPPLIER CONTACT DETAILS MAY BE AVAILABLE ON THE EDG WEBSITE VIA THE FOLLOWING LINK  
[www.edg.net.au/links.html](http://www.edg.net.au/links.html)

TYPE	LAMPS	DESCRIPTION	COLOUR / ACCESSORY	CATALOGUE No	REV
L1	RED LED	FLUSH RECESSED LED STRIP WITHIN THE FLOOR C/W REMOTE DRIVER / POWER SUPPLY	RED	SELECTION BY CONTRACTOR	B
L2	22W 4000K LED	EXISTING DOWNLIGHT TO BE REPLACED WITH A RECESSED 62 DEG DOWNLIGHT C/W REMOTE DRIVER	WHITE	GAMMA ILLUMINATION COBALT 1441-4K-22W	B
L3	16W / M 5700K LED CRI 90	ROD SUSPENDED RECTANGULAR EXTRUSION C/W INTEGRAL DRIVER AND OPAL DIFFUSER	SILVER	HAWKO H5075C	A
L4	60W 4000K LED	EXISTING DOWNLIGHT TO BE REPLACED WITH A RECESSED ADJUSTABLE 55 DEG DOWNLIGHT C/W REMOTE DRIVER	WHITE	GAMMA ILLUMINATION MERCURY 1289-VWFL-4K-60W	B
L5	22W 4000K LED	RECESSED 62 DEG DOWNLIGHT C/W REMOTE DRIVER	WHITE	GAMMA ILLUMINATION COBALT 1441-4K-22W	A
L6	36W 4000K LED	RECESSED 62 DEG DOWNLIGHT C/W REMOTE DRIVER	WHITE	GAMMA ILLUMINATION COBALT 1716-4K-36W	B
W1	EXISTING WALL LIGHT TO REMAIN AS IS				A
D1	EXISTING DOWN LIGHT TO REMAIN AS IS				A
D2	EXISTING DOWN LIGHT TO REMAIN AS IS				A
D3	EXISTING DOWN LIGHT TO REMAIN AS IS				A
D4	EXISTING DOWN LIGHT TO REMAIN AS IS				A
D5	EXISTING DOWN LIGHT TO REMAIN AS IS				A
F1	EXISTING BATTEN TO REMAIN AS IS				A
F2	EXISTING BATTEN TO REMAIN AS IS				A
E1	LED	EXISTING EMERGENCY LIGHT TO BE REPLACED WITH A RECESSED NON-MAINTAINED EMERGENCY LIGHT. AS2293 CLASSIFICATION C0-D40 - C90-D40.	WHITE	CLEVERTRONICS CLIFE-BKL	B
E2	LED	EMERGENCY LIGHT: RECESSED NON-MAINTAINED EMERGENCY LIGHT. AS2293 CLASSIFICATION C0-D40 - C90-D40.	WHITE	CLEVERTRONICS CLIFE-BKL	B

C3454a-0002(C).xls

Pages inc. any attach. 1 of 4



# ELECTRICAL DESIGN GROUP

ELECTRICAL BUILDING SERVICES CONSULTANTS

P.O. Box 15, SHERWOOD Q. 4075

Phone: (07) 3278 4375 Fax: (07) 3716 0222

Web Site: [www.edg.net.au](http://www.edg.net.au) Email: [brisbane@edg.net.au](mailto:brisbane@edg.net.au)

C3454a - MOTORAMA - HILLCREST KIA

C3454a-0002(C).xls

## ELECTRICAL EQUIPMENT SCHEDULE

REVISION C - 07 OCTOBER 2025

THE EQUIPMENT SUPPLIER CONTACT DETAILS MAY BE AVAILABLE ON THE EDG WEBSITE VIA THE FOLLOWING LINK  
[www.edg.net.au/links.html](http://www.edg.net.au/links.html)

TYPE	LAMPS	DESCRIPTION	COLOUR / ACCESSORY	CATALOGUE No	REV
EX	LED	EXIT LIGHT: MAINTAINED 24M VIEWING DISTANCE EXIT LIGHT C/W DIFFUSERS & DIRECTIONAL ARROWS AS SHOWN AND A IP56 HOUSING CEILING OR WALL MOUNT BETWEEN 2100mm & 2700mm AFFL IF THERE IS NO VERTICAL SURFACE TO MOUNT THE FITTING ON WITHIN THIS RANGE CONFIRM THE MOUNTING HEIGHT WITH THE ENGINEER. AS2293 CLASSIFICATION C0-D3.2 - C90-E2.	WHITE LOGO GREEN BACKGROUND WHITE BODY	CLEVERTRONICS LUB PRO SM	A
ONE-WAY LIGHT SWITCH		ONE-WAY LIGHT SWITCH C/W CIRCUIT IDENTIFICATION ON THE FACEPLATE BEHIND THE SURROUND MOUNTED AT 1000mm AFFL UNLESS NOTED OTHERWISE.	WHITE	CLIPSAL C2000 SERIES FACEPLATE	A
LIGHTING CONTROL SWITCH PANEL (SP1)		WALL MOUNTED MULTI GANG SWITCH PANEL TO CONTAIN LABELLED SWITCHES AS PER THE SP1 DETAIL. PROVIDE BLACK ENGRAVING ON THE FACEPLATE TO INDICATE THE SWITCH USE. PROVIDE A SHOP DRAWING OF SP1 FOR APPROVAL.	STAINLESS STEEL	CLIPSAL B SERIES	A
CHANNEL x		CONTROL CHANNEL WITH A NUMERICAL REFERENCE. REFER TO THE POWER AND LIGHTING CONTROL SCHEMATIC / SCHEDULE			A
SINGLE POWER OUTLET		SINGLE POWER OUTLET C/W CIRCUIT IDENTIFICATION ON THE FACEPLATE BEHIND THE SURROUND MOUNT AT 300 AFFL U.N.O.	WHITE	CLIPSAL C2000 SERIES	A
DOUBLE POWER OUTLET		DOUBLE POWER OUTLET C/W CIRCUIT IDENTIFICATION ON THE FACEPLATE BEHIND THE SURROUND MOUNT AT 300 AFFL U.N.O	WHITE	CLIPSAL C2000 SERIES	A
EV CHARGER (EVC)		CONNECT THE KIA EV CHARGER AS PER THE EV CHARGER INSTRUCTIONS			A
CAT 6 COMMUNICATIONS OUTLET		RJ45 CAT-6 COMMUNICATIONS OUTLET, CABLED BACK TO THE COMMUNICATIONS RACK CR-A TERMINATED ONTO FACILITY PATCH PANELS VIA 4-PAIR CAT-6 UTP CABLE. MOUNT UP TO 3 RJ45 OUTLETS PER MULTI-GANG FACEPLATE WITH SEPARATE PERMANENT LABELLING FOR EACH OUTLET. MOUNT AT 300 AFFL U.N.O.	WHITE	CLIPSAL C2000 SERIES KRONE JACK C/W SHUTTER	A
MATV OUTLET		PROVIDE A COAXIAL MATV SYSTEM TO SUPPLY THE NEW MATV OUTLETS	WHITE	CLIPSAL C2000 SERIES	C



# ELECTRICAL DESIGN GROUP

ELECTRICAL BUILDING SERVICES CONSULTANTS

P.O. Box 15, SHERWOOD Q. 4075

Phone: (07) 3278 4375 Fax: (07) 3716 0222

Web Site: [www.edg.net.au](http://www.edg.net.au) Email: [brisbane@edg.net.au](mailto:brisbane@edg.net.au)

C3454a - MOTORAMA - HILLCREST KIA

C3454a-0002(C).xls

## ELECTRICAL EQUIPMENT SCHEDULE

REVISION C - 07 OCTOBER 2025

THE EQUIPMENT SUPPLIER CONTACT DETAILS MAY BE AVAILABLE ON THE EDG WEBSITE VIA THE FOLLOWING LINK  
[www.edg.net.au/links.html](http://www.edg.net.au/links.html)

TYPE	LAMPS	DESCRIPTION	COLOUR / ACCESSORY	CATALOGUE No	REV
COMMUNICATIONS RACK CR-A		PROVIDE CR-A AS A 1000 DEEP 42 RU 800 WIDE 19 INCH COMMUNICATIONS C/W CASTERS, LOCKABLE CLEAR DOOR, VENTILATED SIDES, PATCH PANELS AND CABLE MANAGEMENT TO ACCOMMODATE THE COMMUNICATION OUTLETS. PROVIDE DETAILS OF THE RACK FOR APPROVAL PRIOR TO ORDERING. ENSURE ALL CABLE THAT CONNECT TO THE RACK ARE PROVIDED WITH SUFFICIENT SPARE LENGTH TO ALLOW THE RACK TO BE MOVED 2000 WITHOUT IMPACTING THE CONNECTIONS.	BLACK	REDBACK A4.8842D	A
COMMUNICATIONS RACK CR-N		EXISTING COMMUNICATIONS RACK AND ALL ASSOCIATED SERVICES TO BE REMOVED. ALL EXISTING COMMUNICATIONS SERVICES THAT REMAIN ARE TO BE REDIRECTED TO CR-A			A
NBN PREMISE CONNECTION DEVICE (PCD)		NBN COMPLIANT PREMISES CONNECTION DEVICE AS PER THE PCD DETAIL TO BE CONNECTED TO THE NTD VIA AN NBN COMPLIANT DROP CONDUIT. CONNECT THE PCD TO THE TELSTRA PIT VIA AN NBN COMPLIANT LEAD-IN CONDUIT.			A
NBN NETWORK TERMINATION DEVICE (NTD)		NBN COMPLIANT RACK MOUNTED NETWORK TERMINATION DEVICE TO BE PROVIDED IN ACCORDANCE WITH THE NBN REQUIREMENTS. MOUNT THE NTD WITHIN CR-A			A
DB-N		UPGRADE THE EXISTING DISTRIBUTION BOARD DB-N AS NECESSARY TO ACCOMMODATE THE CIRCUIT MODIFICATIONS AND ADDITIONS REFER TO THE NOTES AND DISTRIBUTION BOARD DB-N SCHEDULE FOR ADDITIONAL INFORMATION AND REQUIREMENTS. REMOVE ALL EXISTING CIRCUITS AND CABLING MADE REDUNDANT BY THE WORKS.			A
MSB		EXISTING MSB TO BE MODIFIED AS PER THE POWER CONFIGURATION SCHEMATIC AND NOTES			A
MSSB		EXISTING MECHANICAL SERVICES SWITCHBOARD TO BE RECONNECTED			A
FLOOR BOX (FB1)		EXISTING FLOOR BOX TO REMAIN AS IS.			A
SIGN OUTLET		COORDINATE THE LOCATION AND CONNECTION WITH THE SIGN CONTRACTOR ENSURING THE GPO / ISOLATORS ARE PROVIDED WITH APPROPRIATE WEATHER PROTECTION AND ARE CONCEALED FROM VIEW.			A
DEMAND METER (DM)		ELECTRIC VEHICLE CHARGING DEMAND MANAGEMENT SYSTEM CURRENT TRANSFORMER			A
CIRCUIT BREAKER		CIRCUIT BREAKER			B
CIRCUIT BREAKER C/W SHUNT TRIP (ST)		CIRCUIT BREAKER C/W A SHUNT TRIP INTERFACED TO THE ELECTRIC VEHICLE CHARGING ISOLATION STATION			B
KWH METER		EXISTING ENERGEX RETAIL METER TO REMAIN AS IS			B



# ELECTRICAL DESIGN GROUP

ELECTRICAL BUILDING SERVICES CONSULTANTS

P.O. Box 15, SHERWOOD Q. 4075

Phone: (07) 3278 4375 Fax: (07) 3716 0222

Web Site: [www.edg.net.au](http://www.edg.net.au) Email: [brisbane@edg.net.au](mailto:brisbane@edg.net.au)

C3454a - MOTORAMA - HILLCREST KIA

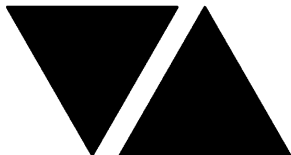
C3454a-0002(C).xls

## ELECTRICAL EQUIPMENT SCHEDULE

REVISION C - 07 OCTOBER 2025

THE EQUIPMENT SUPPLIER CONTACT DETAILS MAY BE AVAILABLE ON THE EDG WEBSITE VIA THE FOLLOWING LINK  
[www.edg.net.au/links.html](http://www.edg.net.au/links.html)

TYPE	LAMPS	DESCRIPTION	COLOUR / ACCESSORY	CATALOGUE No	REV
ELECTRIC VEHICLE CHARGING ISOLATION SWITCH (CIS)		ELECTRIC VEHICLE CHARGING ISOLATION SWITCH PUSH BUTTON WIRED TO THE EV CHARGER SUPPLY CIRCUIT BREAKER SHUNT TRIP TO ISOLATE THE POWER TO THE ELECTRIC VEHICLE CHARGERS. MOUNTED AT 1800mm AFFL UNLESS NOTED OTHERWISE. PROVIDE COLOURED ENGRAVED TEXT AS PER THE CIS ELEVATION.	WHITE	CLIPSAL C2000 SERIES 30USM	A



# ELECTRICAL DESIGN GROUP

ELECTRICAL BUILDING SERVICES CONSULTANTS

P.O. Box 15, SHERWOOD Q. 4075

Phone: (07) 3278 4375 Fax: (07) 3716 0222

Web Site: www.edg.net.au Email: brisbane@edg.net.au

C3454a - MOTORAMA - HILLCREST KIA

C3454a-0004(C).xls

DISTRIBUTION BOARD DB-N

REVISION C - 07 OCTOBER 2025

							REV
MODIFY THE EXISTING DISTRIBUTION BOARD TO ACCOMMODATE THE FOLLOWING CIRCUITS. REMOVE ALL SWITCHGEAR THAT BECOMES REDUNDANT AND UPDATE THE SCHEDULE AT PRACTICAL COMPLETION. IT IS ACCEPTABLE TO UTILISE EXISTING CIRCUITS IF THEY ARE IN APPROPRIATE CONDITION AND HAVE SUFFICIENT SPARE CAPACITY							A
CIRC	PH	CIRCUIT BREAKER (amps)	CONTROL EQUIPMENT	CABLE SIZE ( mm2 )	LOCATION	CIRCUIT USE	
P1	1	20	RCD	2.5	SHOWROOM	AUTODOOR	A
P2	1	20	RCD	2.5	EXTERNAL	MAINTENANCE GPO	A
P3	1	20	RCD	2.5	SHOWROOM	LED SCREEN	C
P4							A
P5	1	20	RCD	2.5	SHOWROOM	CLEANING	A
P6	1	20	RCD	2.5	EXTERNAL	PUMPS	A
P7	1	20	RCD	2.5	GENERAL	CLEANING	A
P8	1	20	RCD	2.5	GENERAL	TV	A
P9	1	20	RCD	2.5	AMENITY	HAND DRYER	A
P10	1	20	RCD	2.5	AMENITY	GPO	A
P11	1	20	RCD	4.0	AMENITY	HAND DRYER	A
P12	1	20	RCD	2.5	OFFICES	DESK	A
P13	1	20	RCD	2.5	SERVICE	PRINTER	A
P14	1	20	RCD	2.5	SERVICE	SERVICE COUNTER	A
P15	1	20	RCD	2.5	SERVICE	DESK	A
P16	1	20	RCD	2.5	STORE	SECURITY	A
P17							A
P18							A
P19							B
P20							A
P21	1	20	RCD	2.5	CUSTOMER LOUNGE	REFERIGERATOR	A
P22	1	20	RCD	2.5	TRAINING	AUTO BOILER	A
P23	1	20	RCD	2.5	CUSTOMER LOUNGE	AUTO BOILER	A
P24	1	20	RCD	2.5	CUSTOMER LOUNGE	COFFEE 20A GPO	A
P25	1	20	RCD	2.5	CUSTOMER LOUNGE	KITCHEN GPO	A
P26	1	20	RCD	2.5	CLERK	CR-N 15A GPO	A
P27	1	20	RCD	2.5	ROOF	WP GPO	A
P28	1	20	RCD	2.5	EXTERNAL	WP GPO	A
P29							A
P30							A
P31	1	20	RCD	2.5	SALES	DESK	A
P32	1	20	RCD	2.5	EXTERNAL	HWS	A
L1	1	20	RCD C6	2.5	EXTERNAL	BUILDING SECURITY	A
L2	1	20	RCD	2.5	INTERNAL	24 HOUR LIGHTING	A
L3	1	20	RCD C4	2.5	INTERNAL	LIGHTING	A
L4	1	20	RCD C5	2.5	DRIVE THRU	LIGHTING	A
L5	1	20	RCD C3	2.5	SALES	LIGHTING	A
L6	1	20	RCD C1 / C2	2.5	SHOWROOM	LIGHTING	A
L7	1	20	RCD C5	2.5	EXTERNAL	BUILDING SIGNAGE	A
L8	1	20	RCD C5	2.5	EXTERNAL	BUILDING SIGNAGE	A
L9	1	20	RCD C6	2.5	EXTERNAL	FLOOD LIGHT	A
L10	1	20	RCD C6	2.5	EXTERNAL	SHOE BOX LIGHT	A
L11	1	20	RCD C6	2.5	EXTERNAL	FLOOD LIGHT	A
L12	1	20	RCD C5	2.5	EXTERNAL	PYLON SIGN	A



LEGEND

ELECTRICAL SERVICES SWITCHBOARD.

SINGLE POWER OUTLET.

DOUBLE POWER OUTLET.

SPECIAL PURPOSE POWER OUTLET.

SIGNAGE CONNECTION.

SINGLE PHASE ISOLATOR.

THREE PHASE ISOLATOR.

JUNCTION BOX.

CONDUIT ROUTE.

EXISTING ELECTRICAL FLOOR BOX TO REMAIN AS IS.

LIGHTING CONTROL SWITCH PANEL 1.

ONE-WAY LIGHT SWITCH.

CIRCUIT LINE.

SWITCH LINE.

POWER CIRCUIT DESIGNATION.  
DENOTES DB AND CIRCUIT.

RJ45 CAT 6 COMMUNICATIONS OUTLET.

ELECTRICAL EQUIPMENT AS NOTED.

MATV OUTLET C/W NEW MATV SYSTEM AS REQUIRED.

LEGEND

REFER TO DETAIL NOTED FOR THE AREA SHOWN HATCHED.  
ADDITIONAL OUTLETS & FITTINGS MAY BE SHOWN ON DETAIL.

NBN NETWORK TERMINATION DEVICE.

NBN PREMISE CONNECTION DEVICE.

ELECTRIC VEHICLE CHARGER.

ELECTRIC VEHICLE CHARGING ISOLATION SWITCH.

CIRCUIT BREAKER.

CIRCUIT BREAKER C/W SHUNT TRIP.

DEMAND METER.

E1: EXISTING TO BE REPLACED RECESSED NON MAINTAINED LED EMERGENCY LIGHT.

E2: NEW RECESSED NON MAINTAINED LED EMERGENCY LIGHT.

EX: MAINTAINED EMERGENCY LED EXIT LIGHT.

L1: FLUSH RECESSED LED STRIP LIGHT.

L2: EXISTING TO BE REPLACED RECESSED DOWNLIGHT.

L3: ROD SUSPENDED RECTANGULAR EXTRUSION LIGHT.

L4: EXISTING TO BE REPLACED RECESSED DOWNLIGHT.

L5: RECESSED DOWNLIGHT.

L6: RECESSED DOWNLIGHT.

LEGEND

W1: EXISTING WALL LIGHT TO REMAIN AS IS.

D1: EXISTING DOWNLIGHT TO REMAIN AS IS.

D2: EXISTING DOWNLIGHT TO REMAIN AS IS.

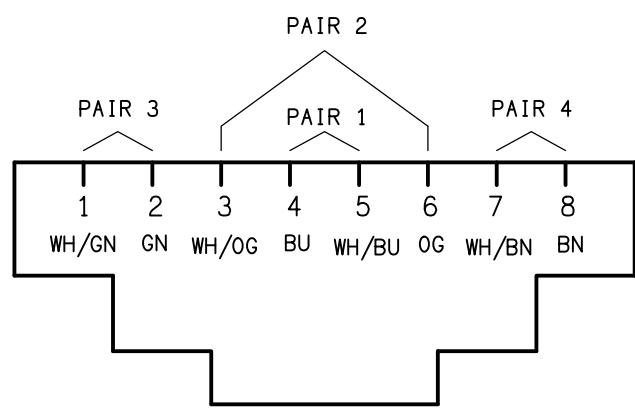
D3: EXISTING DOWNLIGHT TO REMAIN AS IS.

D4: EXISTING DOWNLIGHT TO REMAIN AS IS.

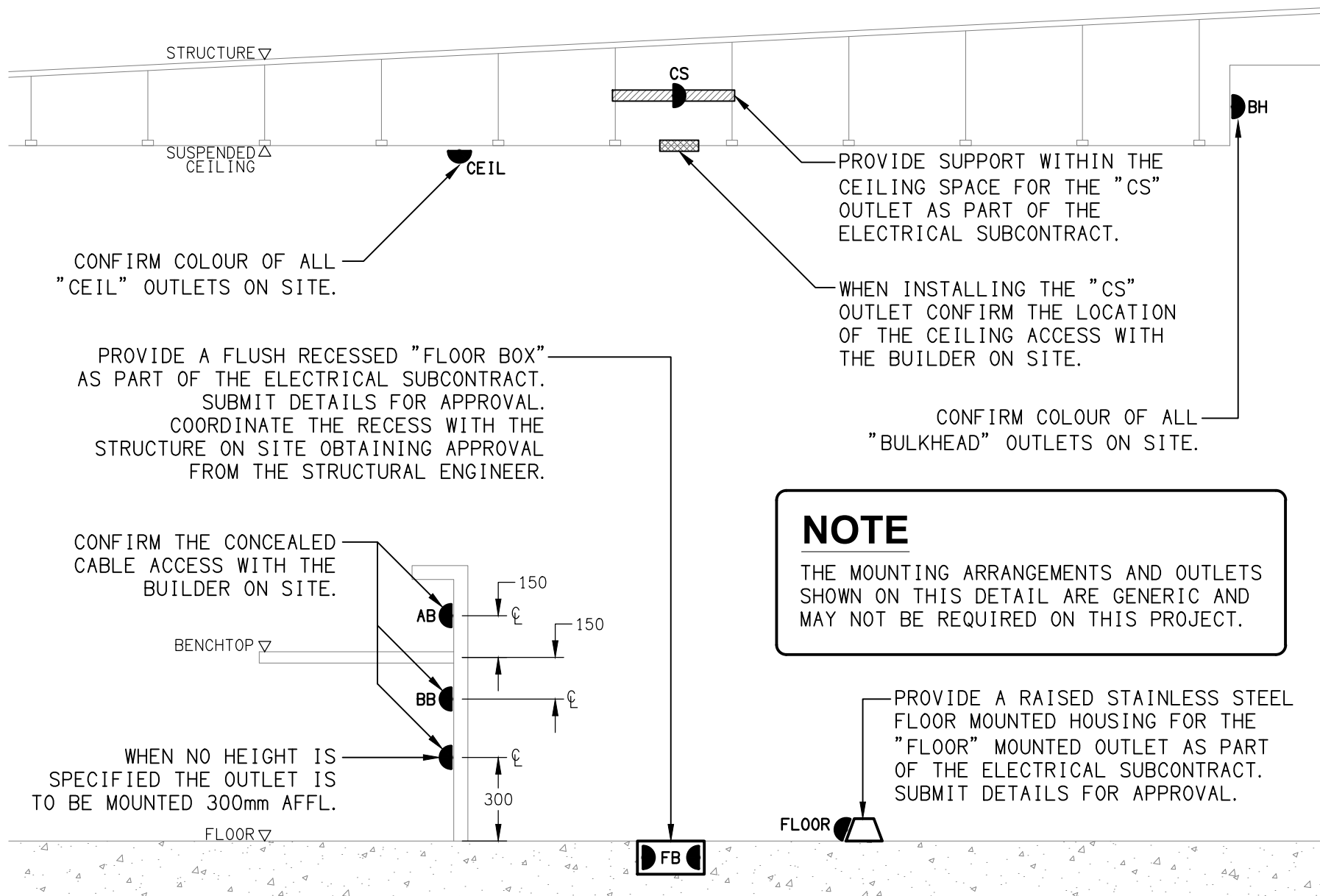
D5: EXISTING DOWNLIGHT TO REMAIN AS IS.

F1: EXISTING TROFFER LIGHT TO REMAIN AS IS.

F2: EXISTING BATTEN LIGHT TO REMAIN AS IS.



SCHEMATIC  
RJ45 PINOUT CONFIGURATION  
NOT TO SCALE



DETAIL  
TYPICAL OUTLET MOUNTINGS  
NOT TO SCALE

NOTES

1. EXTENT OF WORKS

THE ELECTRICAL SERVICES SUB-CONTRACT INCLUDES BUT IS NOT LIMITED TO THE FOLLOWING:

- SUPPLY AND INSTALLATION OF ALL COMPONENTS FORMING PART OF THE ELECTRICAL SERVICES.
- INSPECTIONS.
- TESTING AND COMMISSIONING.
- MAINTENANCE.
- CABLING, CABLE SUPPORT SYSTEMS AND ACCESS.
- POWER DISTRIBUTION.
- LIGHTING.
- COMMUNICATIONS CABLING.
- REMOVE ALL EXISTING ELECTRICAL SERVICES MADE REDUNDANT BY THE WORKS.
- THE EXISTING ELECTRICAL SERVICES NOT REFERENCED OR SHOWN ARE TO REMAIN AS IS.
- ALL MINOR COMPONENTS AND INCIDENTAL WORKS NOT SPECIFICALLY REFERRED TO, HOWEVER NECESSARY TO COMPLETE THE ELECTRICAL SERVICES INSTALLATION SUCH THAT IT IS HANDED OVER COMPLETE, OPERATIONAL AND FIT FOR THE INTENDED USE.

PRIOR TO COMMENCING WORK CONSULT SITE MANAGEMENT FOR ANY HAZARDOUS MATERIAL AND OR ASBESTOS REGISTERS AS WELL AS UNDERTAKE A THOROUGH INSPECTION OF THE SITE TO IDENTIFY ANY POTENTIAL HAZARDOUS MATERIALS, ASBESTOS AND HEALTH OR SAFETY RISKS. ADVISE THE CONTRACTOR OF ANY POTENTIAL HAZARDOUS MATERIALS, ASBESTOS AND HEALTH OR SAFETY RISKS IF IDENTIFIED AND DO NOT COMMENCE WORK UNTIL AN APPROPRIATE MANAGEMENT PLAN HAS BEEN DEVELOPED AND AGREED TO BY ALL PARTIES.

SUPPLY ALL LABOUR, MATERIALS, EQUIPMENT, AND ALL OTHER ITEMS, WHETHER MENTIONED IN DETAIL OR NOT, REQUIRED FOR THE SATISFACTORY COMPLETION OF THE ELECTRICAL SERVICES INSTALLATION, LEAVING IN FULL WORKING ORDER TO THE SATISFACTION OF THE PROJECT MANAGER.

ACCEPT FULL RESPONSIBILITY FOR LIASING, ARRANGING AND CO-ORDINATION OF ALL WORKS THAT HAVE AN EFFECT ON OR WILL BE AFFECTED BY THE ELECTRICAL SERVICES.

REFER TO THE EQUIPMENT SCHEDULE FOR ADDITIONAL REQUIREMENTS.

2. WORKMANSHIP

ENSURE THAT THE ELECTRICAL WORK IS PERFORMED BY THE HOLDER OF A CURRENT ELECTRICAL SUB CONTRACTOR LICENSE AND THE SERVICES COVERED BY THE ACMA IS PERFORMED BY THE HOLDER OF THE APPROPRIATE CURRENT ACMA LICENSE. ENSURE THE INSTALLATION AND ALL COMPONENTS, FIXTURES, FITTINGS, OUTLETS AND CABLES ARE SUPPLIED AND INSTALLED TO A HIGH STANDARD THROUGHOUT, AND INSTALLED IN A NEAT AND TRADESMAN LIKE MANNER, TO THE CURRENT INDUSTRY STANDARDS. ENSURE ALL MATERIALS AND COMPONENTS OF A SIMILAR TYPE ARE OF THE SAME MANUFACTURER AND INSTALLED IN A UNIFORM MANNER.

IT IS THE ELECTRICAL SUB CONTRACTOR'S RESPONSIBILITY TO ENSURE THAT THE INSTALLATION IS FIT FOR PURPOSE AND IS PROVIDED AS A COMPLETE WORKING INSTALLATION. IT IS THE ELECTRICAL SUB CONTRACTOR'S RESPONSIBILITY TO PROVIDE ALL COMPONENTS, FITTINGS, FIXTURES, SYSTEMS, PROGRAMMING ETC IRRESPECTIVE OF THE LEVEL DETAILED IN THE DOCUMENTS SUCH THAT THE INSTALLATION IS PROVIDED AS A COMPLETE WORKING INSTALLATION.

CONCEAL ALL WIRING AND CONDUITS. EXPOSED CABLING OR CONDUITS ARE GENERALLY NOT ACCEPTABLE. IT IS NOTED THAT CHASING AND REINSTATEMENT WILL BE REQUIRED. ENSURE ALL COMPONENTS, EQUIPMENT AND MATERIALS SUPPLIED ARE NEW, UNUSED, DESIGNED AND SELECTED TO ENSURE SATISFACTORY OPERATION UNDER VARYING ATMOSPHERIC, CLIMATIC, HUMID TROPICAL CONDITIONS WITHOUT DISTORTION AND DETERIORATION IN ANY PART AFFECTING EFFICIENCY AND RELIABILITY OF THE SYSTEMS. DESIGN AND SELECT ALL EQUIPMENT TO PROVIDE THE NECESSARY SAFETY TO HUMAN LIFE AND PROPERTY DURING OPERATION AND MAINTENANCE WITH PARTICULAR ATTENTION GIVEN TO ELECTRICAL SAFETY AND SEGREGATION PRECAUTIONS.

NOTES

2. WORKMANSHIP CONTINUED.

CHECK THE FINISHED PAINTWORK AROUND THE AREA OF EACH INSTALLATION AND TOUCH UP ALL DAMAGED PARTS AND FINISHES AFTER THE INSTALLATION OF THE ELECTRICAL SERVICES.

ALL WORKS ARE TO BE CARRIED OUT IN ACCORDANCE WITH THE BUILDER'S PROGRAM. ENSURE ALL FINAL LOCATIONS OF OUTLETS AND FITTINGS ARE CO-ORDINATED ONSITE WITH THE ARCHITECT AND ALL OTHER SERVICES, TO THE APPROVAL OF THE PROJECT MANAGER. ALLOW TO CO-ORDINATE THE FINAL LOCATION OF ALL EQUIPMENT, FITTINGS, & OUTLETS SUCH THAT THEY ARE INSTALLED IN ACCORDANCE WITH THE AS3000 RESTRICTED ZONES, AND ARE NOT COVERED INAPPROPRIATELY.

ENSURE THAT ALL METAL SURFACES ARE SUITABLY PROTECTED AGAINST CORROSION, AND THAT ALL PLASTIC MATERIALS ARE UV STABILISED.

PROVIDE ALL MATERIALS AS NEW, AND OF THE HIGHEST CLASS AVAILABLE FOR THEIR RESPECTIVE TYPES. ENSURE ALL ASPECTS OF THE WORK ARE OF A HIGH STANDARD THROUGHOUT, AND INSTALLED IN A NEAT AND TRADESMAN LIKE MANNER, TO THE CURRENT INDUSTRY STANDARDS.

3. STANDARDS

IRRESPECTIVE OF INFORMATION CONTAINED IN THE ELECTRICAL SERVICES DOCUMENTS OR IN INSTRUCTIONS, IT IS THE ELECTRICAL SUB CONTRACTOR'S RESPONSIBILITY TO ENSURE ALL ELECTRICAL SERVICES WORKS ARE INSTALLED IN ACCORDANCE WITH THE REQUIREMENTS OF THE FOLLOWING. REFER ANY DISCREPANCIES BETWEEN THE REQUIREMENTS OF THE FOLLOWING AND/OR THE ELECTRICAL SERVICES DOCUMENTS AND INSTRUCTIONS TO THE ARCHITECT FOR CLARIFICATION PRIOR TO THE PLACING OF ORDERS, FABRICATION OR INSTALLATION OF THE ITEMS/METHODS IN DISCREPANCY.

- NCC BUILDING CODE OF AUSTRALIA.
- ELECTRICITY ACT.
- ELECTRICAL SAFETY ACT.
- AS/NZS3000.
- AS3008.
- WORKPLACE HEALTH AND SAFETY ACT.
- TELECOMMUNICATIONS ACT.
- ACMA REQUIREMENTS.

4. AUTHORITIES

ENSURE ALL OF THE ELECTRICAL SERVICES COMPLY WITH THE REQUIREMENTS OF ALL REGULATORY AUTHORITIES HAVING JURISDICTION OVER THE SITE INCLUDING BUT NOT LIMITED TO THE FOLLOWING:

- ACMA.
- LOCAL COUNCIL.
- LOCAL SUPPLY AUTHORITY.
- STATE GOVERNMENT DEPARTMENT OF ENVIRONMENT AND HERITAGE.
- QLD GOVERNMENT, DIVISION OF WORKPLACE, HEALTH AND SAFETY.
- QLD FIRE AND EMERGENCY SERVICES.

NOTES

5. CABLES

UNLESS OTHERWISE SPECIFIED, INSTALL AND TERMINATE CABLES IN ACCORDANCE WITH THE MANUFACTURERS' RECOMMENDATIONS. DETERMINE THE FINAL ROUTES TO SUIT THE BUILDING STRUCTURE AND SITE CONDITIONS. UNLESS NOTED OTHERWISE, PROVIDE ALL 240 VOLT POWER AND LIGHTING WIRING AS 2.5mm² TWIN & EARTH STRANDED COPPER CONDUCTORS, PVC INSULATED 0.6/1kV V75 GRADE TO AS3174, PROTECTED BY A 20 AMP CIRCUIT BREAKER. ALL CONDUIT AND FITTINGS TO BE RIGID UPVC TO AS2053, UNLESS NOTED OTHERWISE.

6. POWER DISTRIBUTION

THE POWER DISTRIBUTION COMPONENT OF THIS CONTRACT INCLUDES THE MODIFICATION AND NEW CIRCUITS TO DB-N.

IT IS ACCEPTABLE TO UTILISE THE EXISTING CIRCUITS RETAINED OR REDUNDANT TO SUPPLY THE NEW OUTLETS IF THEY HAVE SUFFICIENT CAPACITY AND COMPLY WITH THE CURRENT VERSION OF AS3000.

ALL OF THE EXISTING CIRCUITS, CABLING AND OUTLETS THAT BECOME REDUNDANT ARE TO BE REMOVED.

ANY INTERRUPTION TO THE POWER SUPPLY TO ANY SERVICES OUTSIDE OF THE AREA OF WORKS MUST BE RESTRICTED TO OUTSIDE OF THE VENUES OPERATING HOURS AND MUST BE ADVISED TO THE OPERATOR IN WRITING TWO WEEKS PRIOR.

REMOVE THE MSSB 100AMP MCCB IN THE MSB AND CONNECT THE EXISTING 250 AMP DIN CHASSIS TO A NEW 250 AMP MCCB CHASSIS IN A NEW CUBICAL HARD AGAINST THE MSB. PROVIDE NEW MCCBS IN THE NEW CUBICAL TO SUPPLY THE MSSB AND EV CHARGER. MODIFY THE EXISTING INSTALLATION AS NECESSARY TO ACCOMMODATE THE NEW CUBICAL. THE NEW CUBICAL IS TO MATCH THE EXISTING MSB IN SIZE, COLOUR AND APPEARANCE.

THE POWER DISTRIBUTION COMPONENT OF THIS CONTRACT INCLUDES, BUT IS NOT LIMITED TO THE FOLLOWING EXTENT OF WORK:

- POWER DISTRIBUTION.
- DB-N MODIFICATIONS AND UPGRADES.
- CABLE ACCESS WAYS.
- CIRCUITS.
- MSB MODIFICATIONS AND EXPANSION.
- EV CHARGER CUBICAL.
- ISOLATORS AND OUTLETS.
- FLOOR BOXES.
- TESTING AND COMMISSIONING.
- REMOVAL OF ALL EXISTING REDUNDANT SERVICES.
- RECONNECTION OF ALL EXISTING SERVICES THAT REMAIN.

7. LIGHTING

ALL OF THE LIGHT FITTINGS, LAMPS AND ACCESSORIES ARE TO BE PROVIDED AS PART OF THIS CONTRACT. THE EXISTING FITTINGS ARE TO BE REPLACED WITH 50,000 HOUR SOLID STATE LED FITTINGS. THE LIGHTING COMPONENT OF THIS CONTRACT INCLUDES, BUT IS NOT LIMITED TO THE FOLLOWING EXTENT OF WORK:

- LIGHTING.
- LIGHT FITTINGS AND ACCESSORIES.
- EMERGENCY AND EXIT LIGHTING.
- EARTHING OF THE LIGHTING INSTALLATION.
- LIGHTING CONTROL.
- LIGHTING SUBCIRCUITS.
- TESTING AND COMMISSIONING.
- RECONNECTION OF THE EXISTING LIGHTING THAT REMAINS.
- REMOVAL OF ALL EXISTING REDUNDANT LIGHTING SERVICES.

NOTES

8. COMMUNICATIONS CABLING

THE COMMUNICATIONS CABLING COMPONENT OF THIS CONTRACT INCLUDES THE PROVISION OF A NEW NBN SERVICE TO THE SITE VIA A NEW LEADIN CONDUIT TO A NBN PCD. THE PCD IS TO BE CONNECTED TO A RACK MOUNTED NTD VIA A DROP CONDUIT. ARRANGE FOR THE NBN SERVICES TO BE INSTALLED INCLUDING ALL CABLE ACCESS WAYS AND DOCUMENTATION IN ACCORDANCE WITH THE NBN REQUIREMENTS. PROVIDE A FULL HEIGHT COMMUNICATIONS RACK CR-A.

PROVIDE THE COMMUNICATIONS CABLING COMPONENT OF THIS CONTRACT AS A COMMSCOPE OR MOLEX CAT 6 INSTALLATION WITH A 15 YEAR MANUFACTURERS PERFORMANCE WARRANTY. THE COMMUNICATIONS CABLING IS TO BE RUN TO PATCH PANELS WITHIN RACK CR-A.

REMOVE ALL EXISTING COMMUNICATIONS SERVICES MADE REDUNDANT BY THE WORKS. REMOVE THE EXISTING COMMUNICATIONS RACK CR-N AND ALL ASSOCIATED COMMUNICATIONS SERVICES. ANY EXISTING COMMUNICATIONS SERVICES THAT REMAIN THAT ARE PREVIOUSLY SUPPLIED FROM CR-N ARE TO BE RESUPPLIED FROM THE NEW CR-A. THIS INCLUDES ALL EXISTING COMMUNICATIONS OUTLETS.

THE COMMUNICATIONS CABLING COMPONENT OF THIS CONTRACT INCLUDES, BUT IS NOT LIMITED TO THE FOLLOWING EXTENT OF WORK:

- NBN APPLICATION AND LEADIN SERVICES.
- NBN CABLE ACCESS WAYS INCLUDING THE PCD AND NTDs.
- COMMUNICATIONS RACK CR-A.
- CAT 6 COMMUNICATIONS OUTLETS AND CABLING.
- CAT 6 PATCH PANELS.
- CABLE ACCESS WAYS.
- TESTING AND COMMISSIONING.
- REMOVAL OF ALL EXISTING COMMUNICATIONS CABLING MADE REDUNDANT BY THE WORKS.

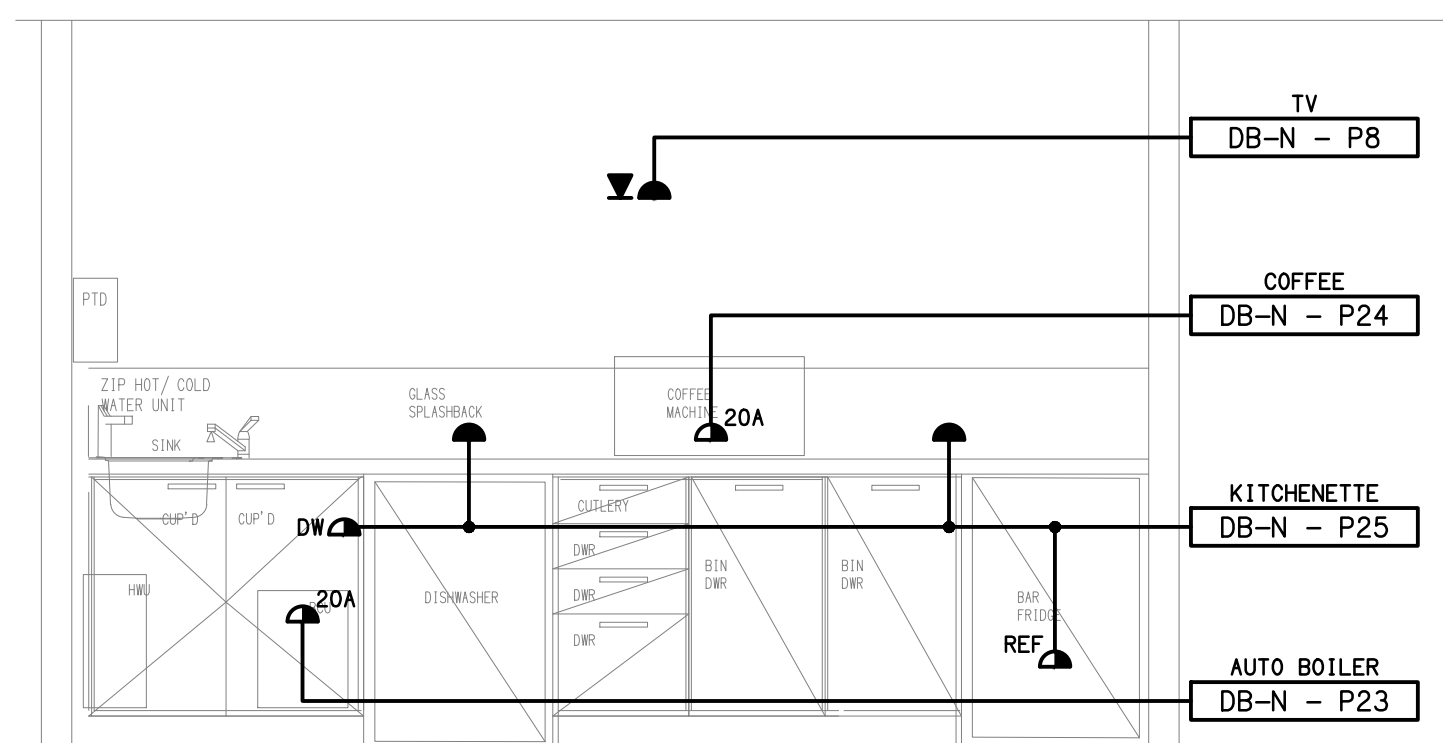
9. ABBREVIATIONS

A - AMP CURRENT RATING  
AB - MOUNT ABOVE BENCH.  
AD - AUTO DOOR.  
AFFL - ABOVE FINISHED FLOOR LEVEL.  
BB - MOUNT BELOW BENCH.  
BH - MOUNT ON BULKHEAD.  
CEIL - MOUNT ON CEILING.  
CS - MOUNT WITHIN CEILING SPACE.  
C/W - COMPLETE WITH.  
EXIST - EXISTING OUTLET.  
HWS - HOT WATER SYSTEM.  
MGB - MINIATURE CIRCUIT BREAKER.  
N - NEON / LED INDICATOR WHEN ON.  
NTS - NOT TO SCALE.  
RCBO - CIRCUIT BREAKER C/W AN INTEGRAL 30ma RESIDUAL CURRENT DEVICE.  
RCD - CIRCUIT PROTECTED VIA A 30ma RESIDUAL CURRENT DEVICE.  
REF - REFRIGERATOR.  
RK - RECESS KIT.  
UNO - UNLESS NOTED OTHERWISE.  
WP - WEATHERPROOF TO IP56 UNO.  
500 - NUMBER DENOTES MOUNTING HEIGHT AFFL.

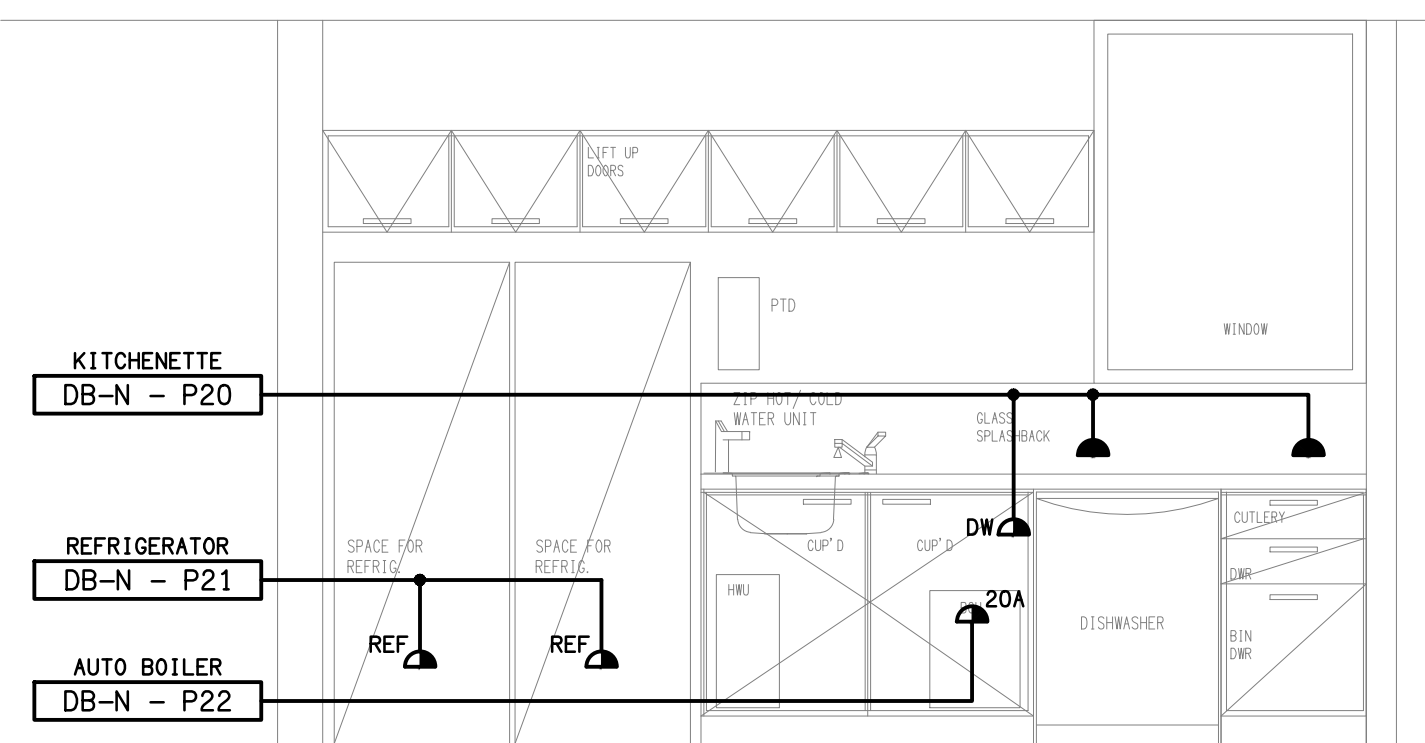




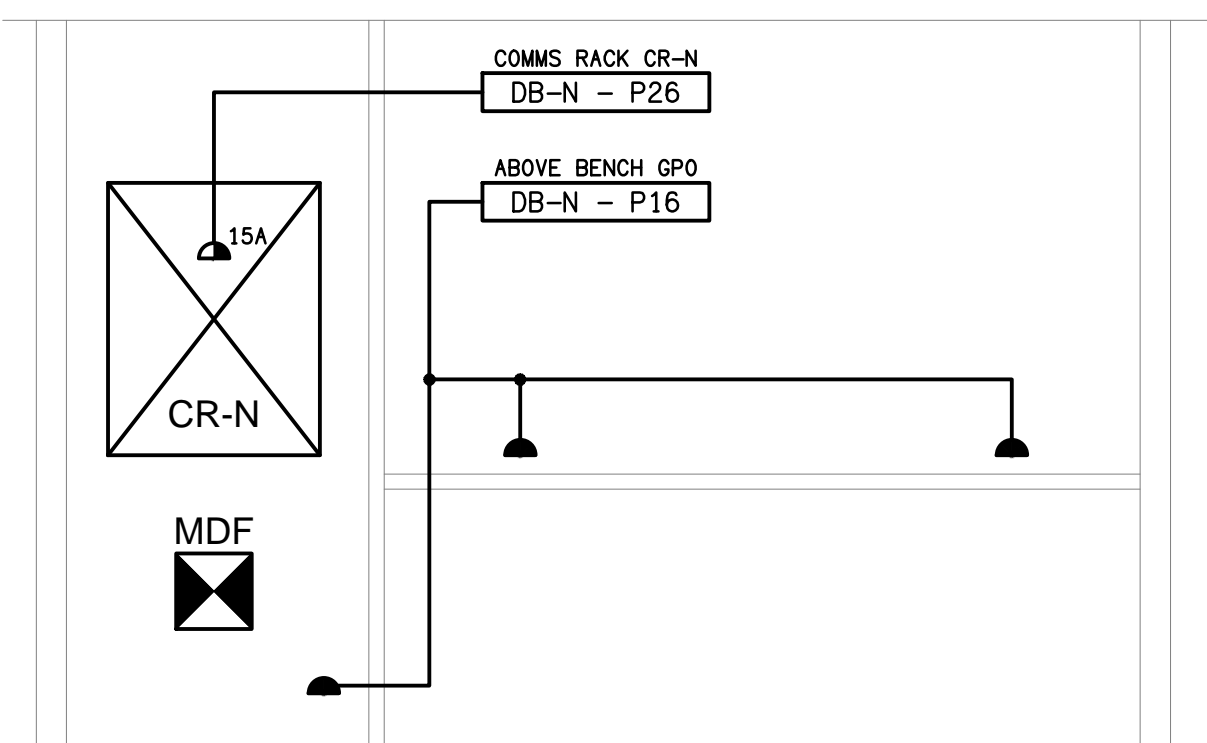




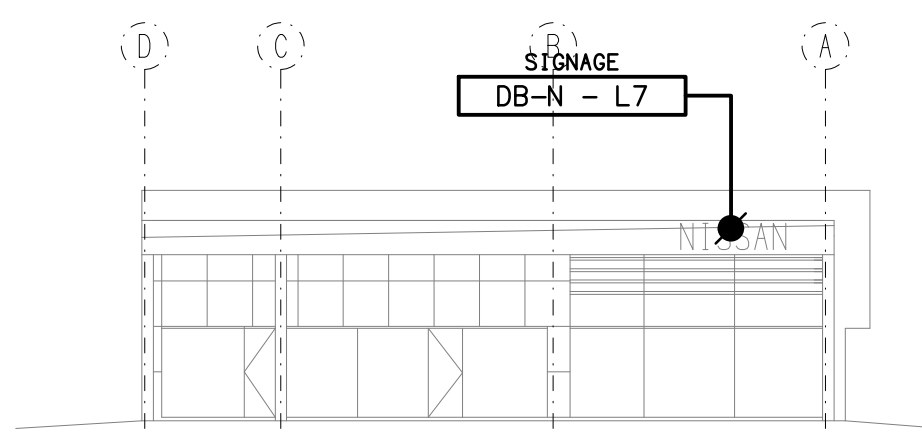
**DETAIL A**  
CUSTOMER LOUNGE KITCHENETTE ELEVATION  
SCALE 1:25



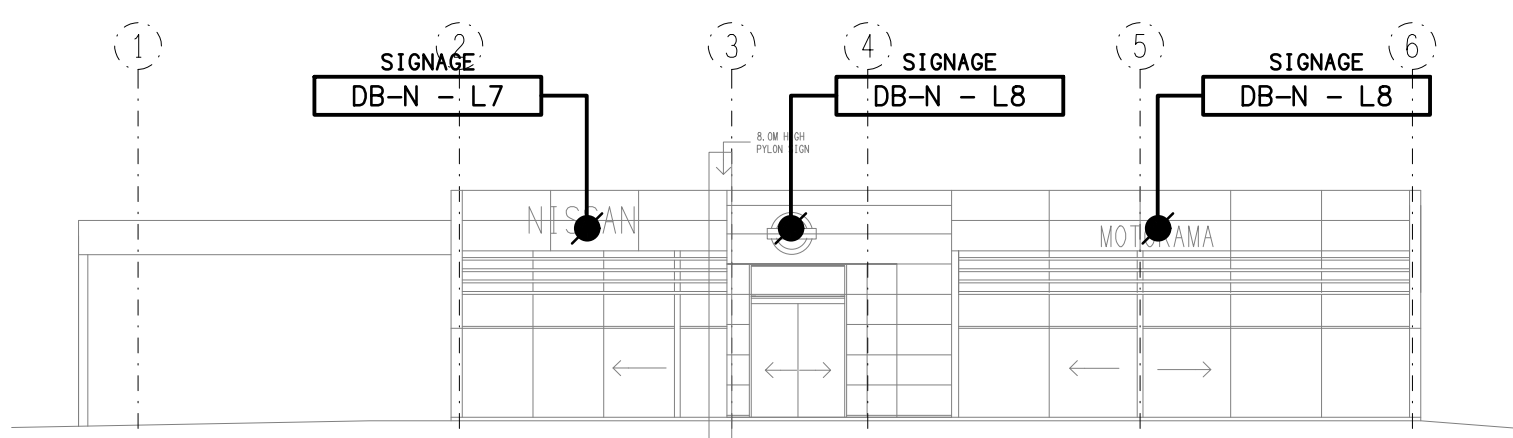
**DETAIL B**  
TRAINING ROOM KITCHENETTE ELEVATION  
SCALE 1:25



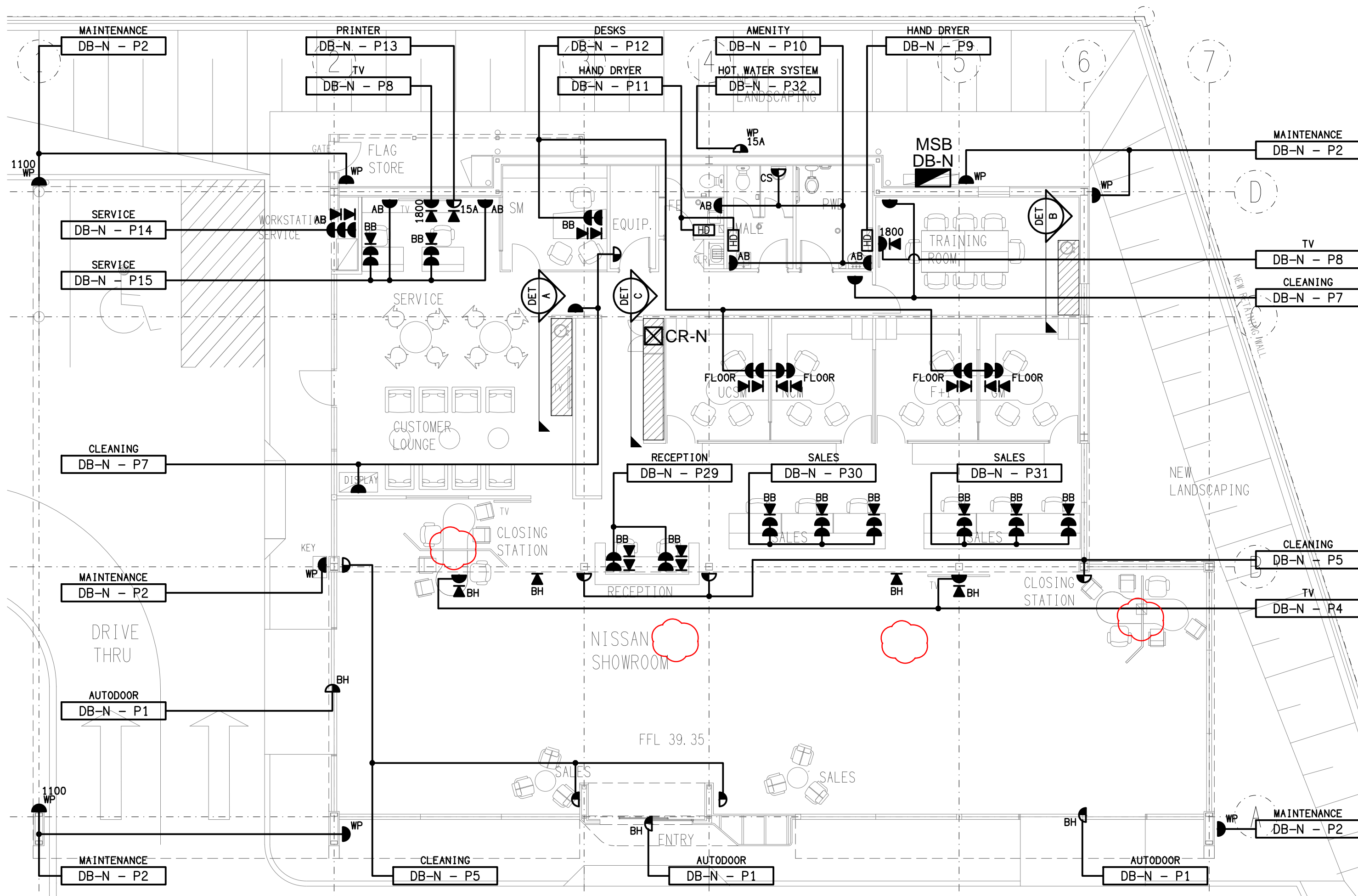
**DETAIL C**  
COMMUNICATIONS CUPBOARD & BENCH ELEVATION  
SCALE 1:25



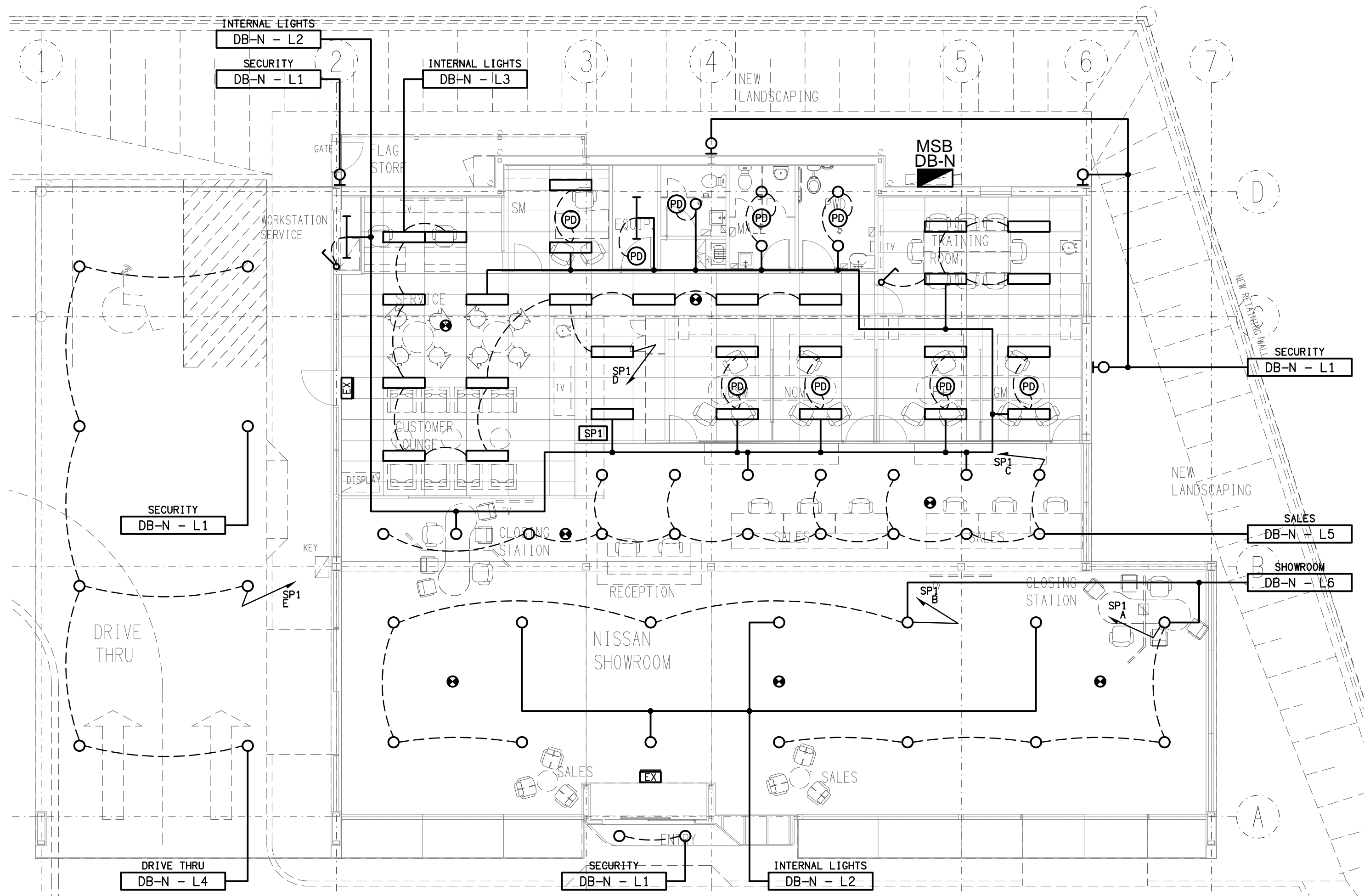
**SOUTH ELEVATION**  
EXTERNAL BUILDING VIEW  
SCALE 1:200



**EAST ELEVATION**  
EXTERNAL BUILDING VIEW  
SCALE 1:200

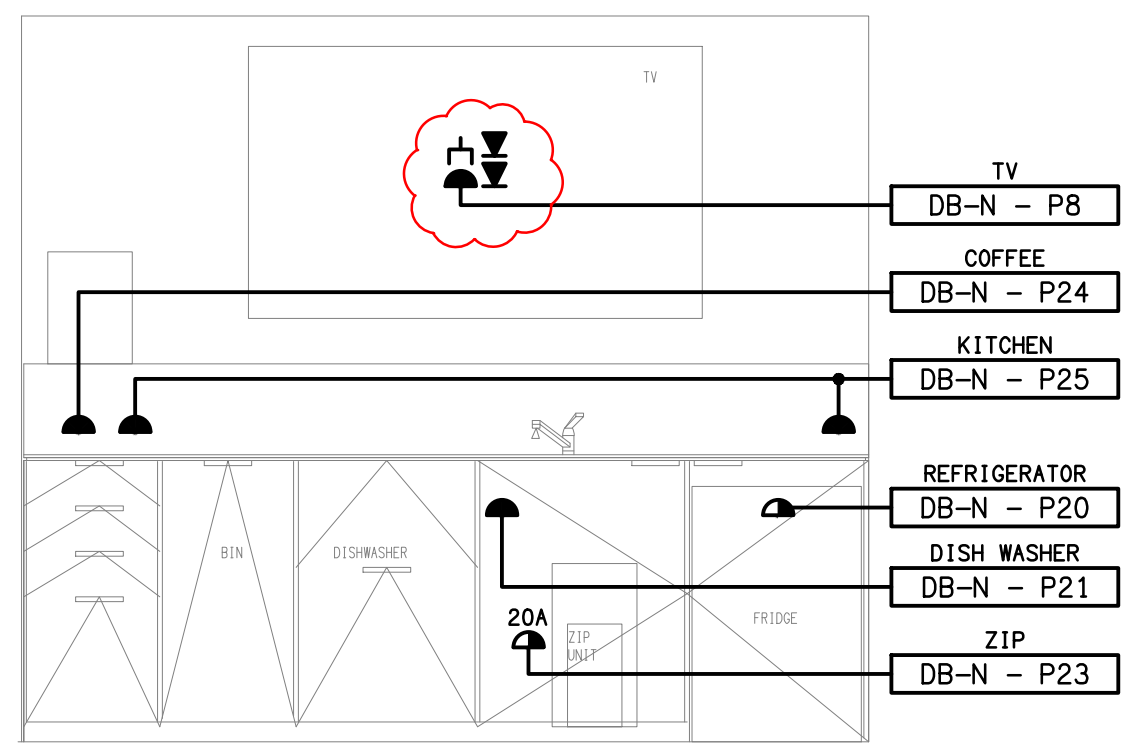


**EXISTING FLOOR PLAN**  
SCALE 1:100

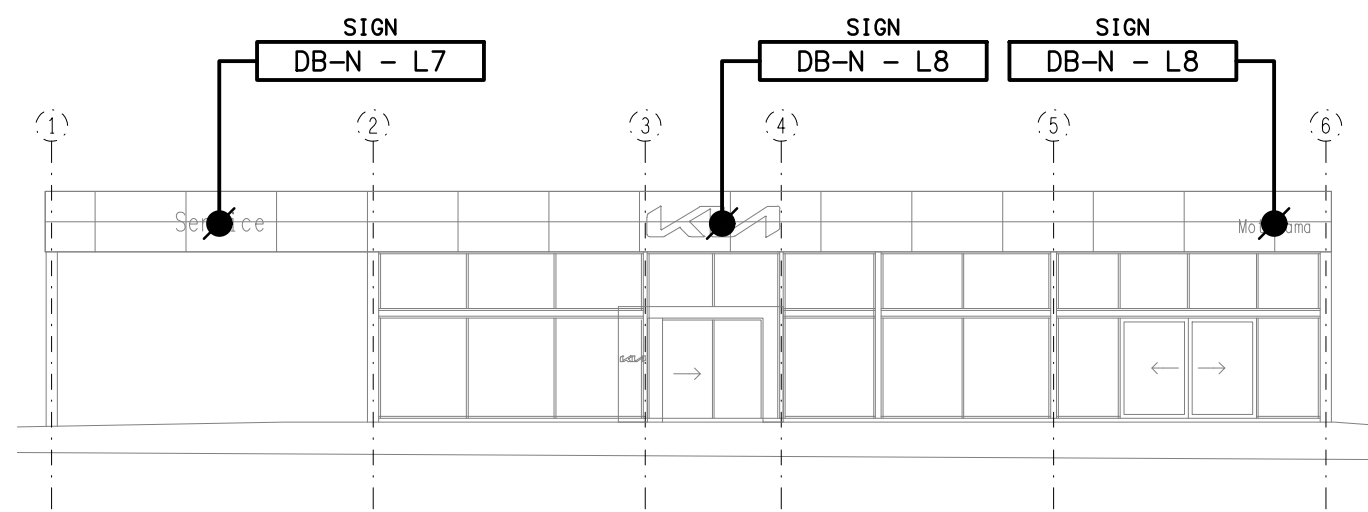


**EXISTING REFLECTED CEILING PLAN**  
SCALE 1:100

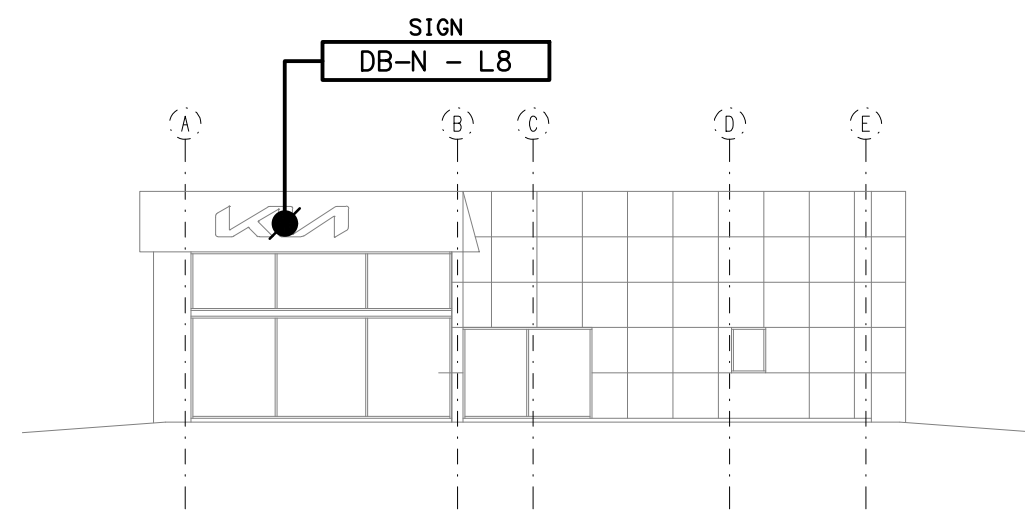




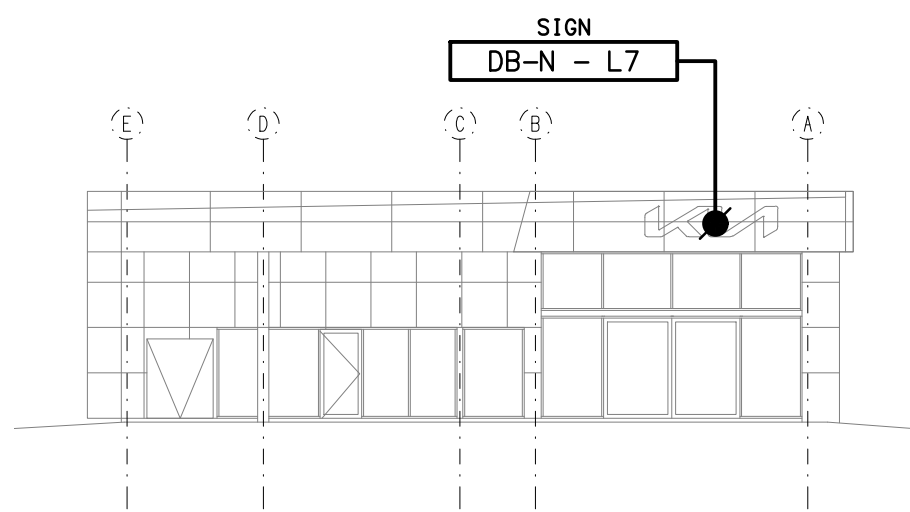
**DETAIL A**  
CAFE KITCHENETTE ELEVATION  
SCALE 1: 25



**EAST ELEVATION**  
EXTERNAL BUILDING VIEW  
SCALE 1: 200

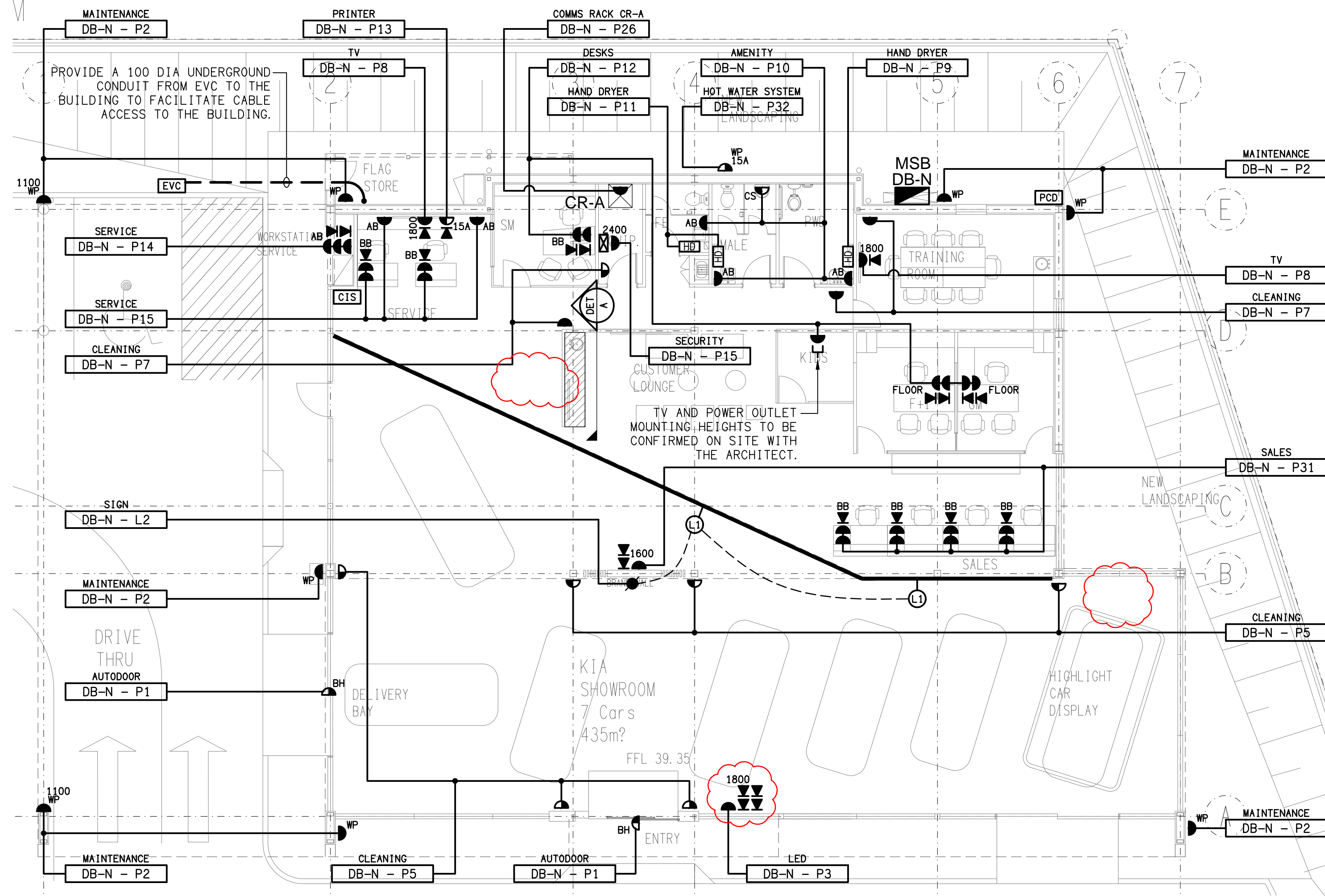


**NORTH ELEVATION**  
EXTERNAL BUILDING VIEW  
SCALE 1: 200

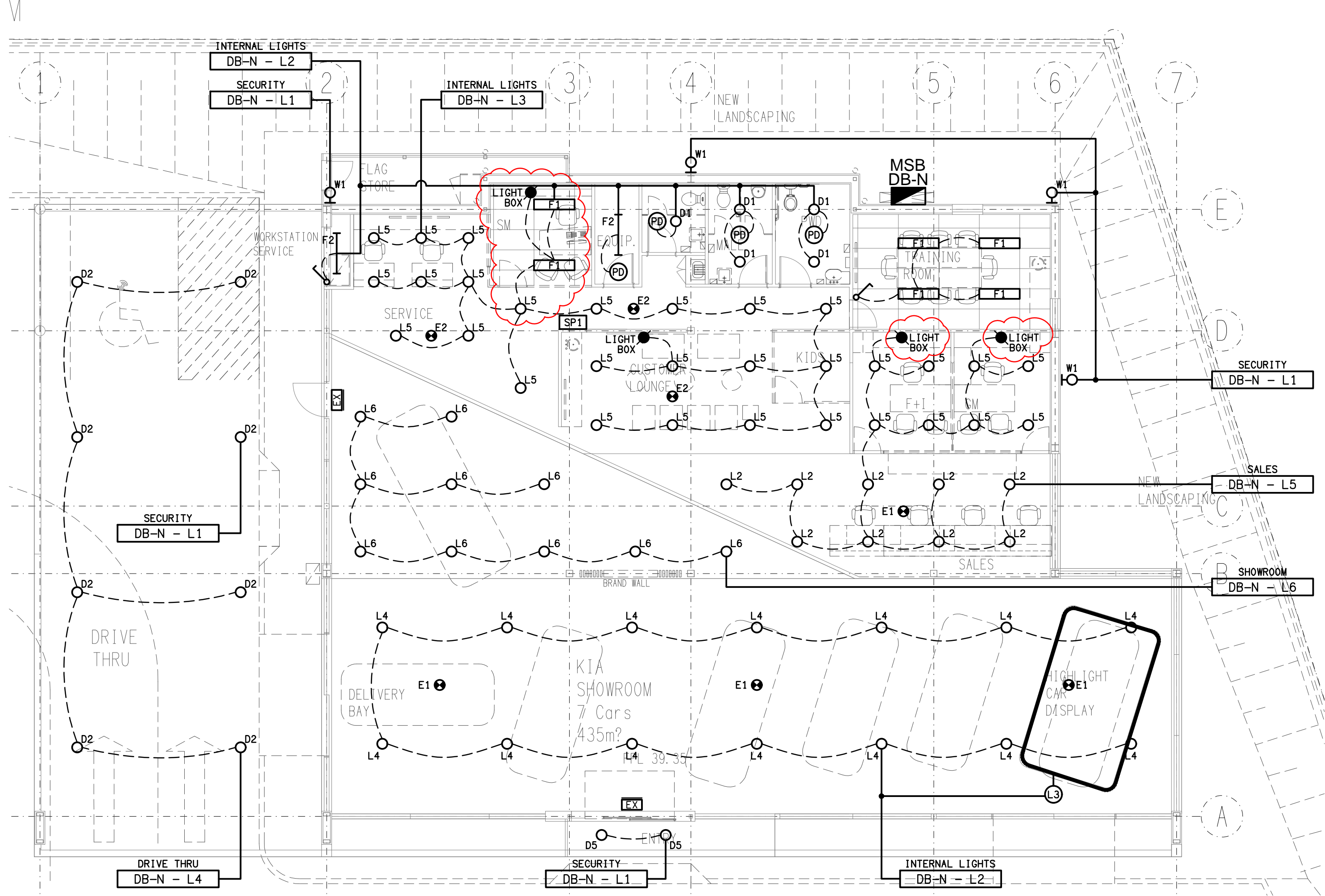


**SOUTH ELEVATION**  
EXTERNAL BUILDING VIEW  
SCALE 1: 200

THIS DRAWING CONTAINS CLOUDED  
CHANGES FOR REVISIONS (E) AND (F).



**PROPOSED**  
FLOOR PLAN  
SCALE 1: 100



**PROPOSED**  
REFLECTED CEILING PLAN  
SCALE 1: 100