



ELECTRICAL DESIGN GROUP

ELECTRICAL BUILDING SERVICES CONSULTANTS

P.O. Box 15, SHERWOOD Q. 4075

Phone: (07) 3278 4375

Website: www.edg.net.au Email: brisbane@edg.net.au

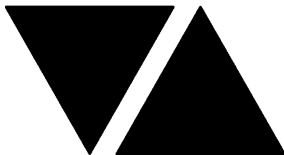
C3461a - EAGERS MT GRAVATT - 1281 LOGAN ROAD
ELECTRICAL SERVICES CONTRACT DOCUMENT SCHEDULE
REVISION D - 11 SEPTEMBER 2025

C3461a-0001(D).xls

ISSUING INFORMATION				DATE OF ISSUE							
	DAY	19	06	14	11						
	MONTH	05	06	08	09						
	YEAR	25	25	25	25						
REASON FOR ISSUE				P	T	C	C				
A = APPROVAL C = CONSTRUCTION D = % DEVELOPED AS NOTED				P = PRELIMINARY				T = TENDER			

DISTRIBUTION				NUMBER OF COPIES							
WWW.EDG.NET.AU				1E	1E	1E	1E				
WIM ARCHITECTS				1E	1E	1E	1E				
P = PRINT T = TRACING D = DISC E = EMAIL F = FAX											

DOCUMENTS		REVISION									
C3461a-E01.dwg	LEGEND & DETAILS	A	B	C							
C3461a-E02.dwg	NOTES	A	B	C							
C3461a-E03.dwg	SITE PLAN	A	B	C	D						
C3461a-E04.dwg	FLOOR PLAN	A	B	C	D						
C3461a-E05.dwg	REFLECTED CEILING PLAN	A	B	C							
C3461a-E06.dwg	POWER & LIGHTING CONTROL SCHEMATICS	A	B	C							
C3461a-0001.xls	CONTRACT DOCUMENT SCHEDULE	A	B	C	D						
C3461a-0002.xls	EQUIPMENT SCHEDULE	A	B	C							
C3461a-0004.xls	DISTRIBUTION BOARD DB-A SCHEDULE	A	B								
C3461a-0001.zip	FITTING & OUTLET DATASHEETS		A	B							



ELECTRICAL DESIGN GROUP

ELECTRICAL BUILDING SERVICES CONSULTANTS

P.O. Box 15, SHERWOOD Q. 4075

Phone: (07) 3278 4375 Fax: (07) 3716 0222

Web Site: www.edg.net.au Email: brisbane@edg.net.au

C3461a - EAGERS MT GRAVATT - 1281 LOGAN ROAD

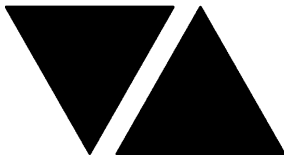
C3461a-0002(C).xls

ELECTRICAL EQUIPMENT SCHEDULE

REVISION C - 14 AUGUST 2025

THE LIGHT FITTING SUPPLIER CONTACT DETAILS MAY BE AVAILABLE ON THE EDG WEBSITE VIA THE FOLLOWING LINK
www.edg.net.au/Links/Lighting.htm

TYPE	LAMPS	DESCRIPTION	COLOUR / ACCESSORY	CATALOGUE No	REV
L1	30W 4000K LED	4M POLE AND ADJUSTABLE FLOOD LIGHT C/W INTEGRAL DRIVER ALL 240 VOLT CABLING TO THE POLES ARE TO BE RUN IN CONDUITS AT LEAST 50MM TO FACILITATE FUTURE POWER CABLING. ALL CONDUITS ARE TO HAVE A SPARE DRAW WIRE AND BE SHOWN ON THE AS CONSTRUCTED DOCUMENTS.	BLACK FITTING BLACK POLE	MELEC ML-NOX3-V4-W	B
L2	3750 LUMEN 4000K LED	600 X 600 LAY IN FLAT PLATE LED FITTING C/W REMOTE DRIVER AND A PB RECESS KIT	WHITE TRIM	SAL LIGHTING S9784/606TC/DP2 + PB KIT	B
L3	2500 LUMEN 4000K LED	300 X 600 LAY IN FLAT PLATE LED FITTING C/W REMOTE DRIVER AND A PB RECESS KIT	WHITE TRIM	SAL LIGHTING S9784/306TC/DP2 + PB KIT	B
L4	12W 4000K LED	AMENITY RECESSED DOWNLIGHT C/W REMOTE DRIVER	WHITE	SAL LIGHTING ECOSTAR S9048TC	B
L5	24W 4000K LED	RECESSED 62 DEG DOWNLIGHT C/W REMOTE DRIVER	WHITE	SAL LIGHTING RENMARK S9083R35TC/DP - 24W	B
L6	60W 4000K LED	RECESSED ADJUSTABLE SQUARE DOWNLIGHT C/W REMOTE DRIVER	WHITE	GAMMA ILLUMINATION LEPLEX 1082-VWFL-4K-60W	B
L7	24W 4000K LED	RECESSED DOWNLIGHT C/W REMOTE DRIVER	WHITE	SAL LIGHTING RENMARK S9083R35TC/DP - 24/35W	B
L8	TBA	DECORATIVE PENDANT ALLOW TO INSTALL. ALLOW A PC SUM EXC GST FOR THE SUPPLY OF EACH L8 FITTING	TBA	ALLOW A PC SUM OF \$500.00 PER FITTING	B
L9	TBA	DECORATIVE PENDANT ALLOW TO INSTALL. ALLOW A PC SUM EXC GST FOR THE SUPPLY OF EACH L9 FITTING	TBA	ALLOW A PC SUM OF \$500.00 PER FITTING	B
L10	TBA	DECORATIVE PENDANT ALLOW TO INSTALL. ALLOW A PC SUM EXC GST FOR THE SUPPLY OF EACH L10 FITTING	TBA	ALLOW A PC SUM OF \$500.00 PER FITTING	B
L11	TBA	DECORATIVE PENDANT ALLOW TO INSTALL. ALLOW A PC SUM EXC GST FOR THE SUPPLY OF EACH L11 FITTING	TBA	ALLOW A PC SUM OF \$500.00 PER FITTING	B
L12	2100 DELIVERED LUMEN 4000K LED	2400 LONG LONG ROD SUSPENDED BLACK EXTRUSION C/W OPAL DIFFUSER INTEGRAL DRIVER. CONFIRM THE SUSPENSION LENGTH ON SITE WITH THE ARCHITECT.	BLACK	EQUAL TO KLIK SYSTEMS KALLI 080 BEAM D	B



ELECTRICAL DESIGN GROUP

ELECTRICAL BUILDING SERVICES CONSULTANTS

P.O. Box 15, SHERWOOD Q. 4075

Phone: (07) 3278 4375 Fax: (07) 3716 0222

Web Site: www.edg.net.au Email: brisbane@edg.net.au

C3461a - EAGERS MT GRAVATT - 1281 LOGAN ROAD

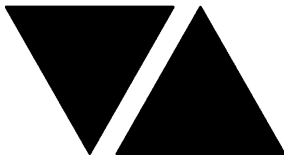
C3461a-0002(C).xls

ELECTRICAL EQUIPMENT SCHEDULE

REVISION C - 14 AUGUST 2025

THE LIGHT FITTING SUPPLIER CONTACT DETAILS MAY BE AVAILABLE ON THE EDG WEBSITE VIA THE FOLLOWING LINK
www.edg.net.au/Links/Lighting.htm

TYPE	LAMPS	DESCRIPTION	COLOUR / ACCESSORY	CATALOGUE No	REV
L13	30W 4000K LED	5400 LONG THREE CIRCUIT SURFACE MOUNTED TRACK C/W FIVE ADJUSTABLE TRACK MOUNTED FITTINGS CONTAINING INTEGRAL DRIVERS	BLACK	SAL LIGHTING C/W STR4886MPTC 30 FITTINGS	B
L14	30W 4000K LED	5400 LONG THREE CIRCUIT SURFACE MOUNTED TRACK C/W TEN ADJUSTABLE TRACK MOUNTED FITTINGS CONTAINING INTEGRAL DRIVERS	BLACK	SAL LIGHTING C/W STR4886MPTC 30 FITTINGS	B
L15	150W 4000K LED	9M POLE AND CARPARK LIGHT C/W INTEGRAL DRIVER ALL 240 VOLT CABLING TO THE POLES ARE TO BE RUN IN CONDUITS AT LEAST 50MM TO FACILITATE FUTURE POWER CABLING. ALL CONDUITS ARE TO HAVE A SPARE DRAW WIRE AND BE SHOWN ON THE AS CONSTRUCTED DOCUMENTS.	BLACK FITTING BLACK POLE	MELEC ML-ROX-150-4K-PE-BK	B
L16	50W 4000K LED	9M POLE AND CARPARK LIGHT C/W INTEGRAL DRIVER ALL 240 VOLT CABLING TO THE POLES ARE TO BE RUN IN CONDUITS AT LEAST 50MM TO FACILITATE FUTURE POWER CABLING. ALL CONDUITS ARE TO HAVE A SPARE DRAW WIRE AND BE SHOWN ON THE AS CONSTRUCTED DOCUMENTS.	BLACK FITTING BLACK POLE	MELEC ML-ROX-50-4K-PE-BK	B
L17	16W 4000K LED	EXTERNAL WALL LIGHT TO REPLACE THE EXISTING FITTING C/W INTEGRAL DRIVER	BLACK	SAL LIGHTING SE7146CW/BK	B
E1	LED	EMERGENCY LIGHT: RECESSED NON-MAINTAINED EMERGENCY LIGHT. AS2293 CLASSIFICATION C0-D40 - C90-D40.	WHITE	CLEVERTRONICS CLIFE	B
EX	LED	EXIT LIGHT: MAINTAINED 24M VIEWING DISTANCE EXIT LIGHT C/W DIFFUSERS & DIRECTIONAL ARROWS AS SHOWN. CEILING SURFACE MOUNT OR WALL MOUNT BETWEEN 2100mm & 2700mm AFFL IF THERE IS NO VERTICAL SURFACE TO MOUNT THE FITTING ON WITHIN THIS RANGE CONFIRM THE MOUNTING HEIGHT WITH THE ENGINEER. PROVIDE A CUSTOM WHITE COUNTER LEVER MOUNTING BRACKET AS REQUIRED AS2293 CLASSIFICATION C0-D8 - C90-E3.2.	WHITE	CLEVERTRONICS LUB PRO SM	B
SWITCH PANEL (SPA)		WALL MOUNTED MULTI GANG SWITCH PANEL AS PER THE LIGHTING CONTROL SCHEMATIC. MOUNTED AT 1000mm AFFL UNLESS NOTED OTHERWISE.	STAINLESS STEEL	CLIPSAL B SERIES	C
LIGHTING CONTROL CHANNELS		PROVIDE LIGHTING CONTROLS CHANNELS 1 THROUGH TO 5 AS MANUAL SWITCHES ON SP1.			B



ELECTRICAL DESIGN GROUP

ELECTRICAL BUILDING SERVICES CONSULTANTS

P.O. Box 15, SHERWOOD Q. 4075

Phone: (07) 3278 4375 Fax: (07) 3716 0222

Web Site: www.edg.net.au Email: brisbane@edg.net.au

C3461a - EAGERS MT GRAVATT - 1281 LOGAN ROAD

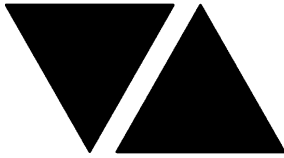
C3461a-0002(C).xls

ELECTRICAL EQUIPMENT SCHEDULE

REVISION C - 14 AUGUST 2025

THE LIGHT FITTING SUPPLIER CONTACT DETAILS MAY BE AVAILABLE ON THE EDG WEBSITE VIA THE FOLLOWING LINK
www.edg.net.au/Links/Lighting.htm

TYPE	LAMPS	DESCRIPTION	COLOUR / ACCESSORY	CATALOGUE No	REV
PROXIMITY DETECTOR SWITCH (PD)		ADJUSTABLE FLUSH RECESSED 360 DEGREE PIR PRESENCE DETECTOR TO OPERATE THE ASSOCIATED LIGHTS FOR A PRE-SET AMOUNT OF TIME. ADJUST THE TIME AND SENSITIVITY ON SITE AS DIRECTED BY THE ENGINEER. SUBMIT DETAILS OF THE MOVEMENT DETECTOR SWITCH FOR APPROVAL PRIOR TO ORDERING	WHITE	CLIPSAL	B
ONE-WAY LIGHT SWITCH		ONE-WAY LIGHT SWITCH C/W CIRCUIT IDENTIFICATION ON THE FACEPLATE BEHIND THE SURROUND MOUNTED AT 1000mm AFFL UNLESS NOTED OTHERWISE.	WHITE	CLIPSAL C2000 SERIES FACEPLATE	B
TWO-WAY LIGHT SWITCH		TWO-WAY LIGHT SWITCH C/W CIRCUIT IDENTIFICATION ON THE FACEPLATE BEHIND THE SURROUND MOUNTED AT 1000mm AFFL UNLESS NOTED OTHERWISE.	WHITE	CLIPSAL C2000 SERIES FACEPLATE	B
AUTO DOOR ENTRY PUSH BUTTON (PB1)		BLANK FACEPLATE C/W RECESSED DEEP WALL BOX AND A CONCEALED 32 DIA CONDUIT FROM THE WALL BOX TO THE AUTO DOOR MOTOR / CONTROLLER (DM1) MOUNTED AT 1000mm AFFL UNLESS NOTED OTHERWISE.	WHITE	CLIPSAL C2000 SERIES FACEPLATE	B
AUTO DOOR EXIT PUSH BUTTON (PB2)		BLANK FACEPLATE C/W RECESSED DEEP WALL BOX AND A CONCEALED 32 DIA CONDUIT FROM THE WALL BOX TO THE AUTO DOOR MOTOR / CONTROLLER (DM1) MOUNTED AT 1000mm AFFL UNLESS NOTED OTHERWISE.	WHITE	CLIPSAL C2000 SERIES FACEPLATE	B
AUTO DOOR MOTOR / CONTROLLER (DM1)		SINGLE 10 AMP POWER OUTLET C/W CIRCUIT IDENTIFICATION ON THE FACEPLATE MOUNTED AT HIGH LEVEL IN A CONCEALED POSITION FOR THE AUTO DOOR MOTOR / CONTROLLER AS DIRECTED / COORDINATED WITH BY THE AUTO DOOR SUPPLIER ON SITE	WHITE	CLIPSAL C2000 SERIES FACEPLATE	B
CAT 6 COMMUNICATIONS OUTLET		RJ45 CAT-6 COMMUNICATIONS OUTLET, CABLED BACK TO THE COMMUNICATIONS RACK CR-A TERMINATED ONTO FACILITY PATCH PANELS VIA 4-PAIR CAT-6 UTP CABLE. MOUNT UP TO 3 RJ45 OUTLETS PER MULTI-GANG FACEPLATE WITH SEPARATE PERMANENT LABELLING FOR EACH OUTLET.	WHITE	CLIPSAL C2000 SERIES FACEPLATE	B



ELECTRICAL DESIGN GROUP

ELECTRICAL BUILDING SERVICES CONSULTANTS

P.O. Box 15, SHERWOOD Q. 4075

Phone: (07) 3278 4375 Fax: (07) 3716 0222

Web Site: www.edg.net.au Email: brisbane@edg.net.au

C3461a - EAGERS MT GRAVATT - 1281 LOGAN ROAD

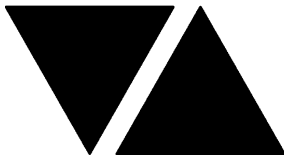
C3461a-0002(C).xls

ELECTRICAL EQUIPMENT SCHEDULE

REVISION C - 14 AUGUST 2025

THE LIGHT FITTING SUPPLIER CONTACT DETAILS MAY BE AVAILABLE ON THE EDG WEBSITE VIA THE FOLLOWING LINK
www.edg.net.au/Links/Lighting.htm

TYPE	LAMPS	DESCRIPTION	COLOUR / ACCESSORY	CATALOGUE No	REV
COMMUNICATIONS RACK CR-A		PROVIDE CR-B AS A 800 DEEP 42 RU 800 WIDE 19 INCH COMMUNICATIONS C/W CASTERS, LOCKABLE CLEAR DOOR, VENTILATED SIDES, PATCH PANELS AND CABLE MANAGEMENT TO ACCOMMODATE THE COMMUNICATION OUTLETS. PROVIDE DETAILS OF THE RACK FOR APPROVAL PRIOR TO ORDERING. ENSURE ALL CABLE THAT CONNECT TO THE RACK ARE PROVIDED WITH SUFFICIENT SPARE LENGTH TO ALLOW THE RACK TO BE MOVED 2000 WITHOUT IMPACTING THE CONNECTIONS.	BLACK	REDBACK A4.8842D	B
NBN PREMISE CONNECTION DEVICE (PCD)		NBN COMPLIANT PREMISES CONNECTION DEVICE AS PER THE PCD DETAIL TO BE CONNECTED TO THE NTD VIA AN NBN COMPLIANT DROP CONDUIT. CONNECT THE PCD TO THE TELSTRA PIT VIA AN NBN COMPLIANT LEAD-IN CONDUIT.			B
NBN NETWORK TERMINATION UNIT (NTD)		RACK MOUNTED NETWORK TERMINATION UNIT TO BE PROVIDED IN ACCORDANCE WITH THE NBN REQUIREMENTS. MOUNT THE NTU WITHIN CR-A			B
SINGLE POWER OUTLET		SINGLE POWER OUTLET C/W CIRCUIT IDENTIFICATION ON THE FACEPLATE BEHIND THE SURROUND MOUNT AT 300mm AFFL U.N.O. RATING 10A U.N.O.	WHITE	CLIPSAL C2000 SERIES FACEPLATE	B
DOUBLE POWER OUTLET		DOUBLE POWER OUTLET C/W CIRCUIT IDENTIFICATION ON THE FACEPLATE BEHIND THE SURROUND MOUNT AT 300mm AFFL U.N.O. RATING 10A U.N.O.	WHITE	CLIPSAL C2000 SERIES FACEPLATE	B
SPECIAL PURPOSE OUTLET		SPECIAL PURPOSE OUTLET TYPE AS NOTED. MOUNT AT 1350mm AFFL U.N.O. RATING 20A U.N.O. CONNECT TO EQUIPMENT VIA FLEXIBLE CONDUIT.			B
DOUBLE POWER OUTLET (USB)		DOUBLE POWER OUTLET C/W USB CHARGER AND CIRCUIT IDENTIFICATION ON THE FACEPLATE BEHIND THE SURROUND MOUNT AT AB U.N.O. RATING 10A U.N.O.	WHITE	CLIPSAL 2000 SERIES + 30USBCM MECH	B
SINGLE POWER OUTLET FOR THE AUTO DOOR (AD)		SINGLE 10 AMP POWER OUTLET C/W CIRCUIT IDENTIFICATION ON THE FACEPLATE BEHIND THE SURROUND MOUNTED WITHIN THE AUTO DOOR MULLION	WHITE	CLIPSAL C2000 SERIES	B
WEATHERPROOF POWER OUTLET (WP)		IP54 WEATHERPROOF SINGLE / DOUBLE POWER OUTLET AS NOTED ON DRAWING C/W COVER FLAP OVER SOCKET. MOUNT AT MINIMUM 1100mm AFFL U.N.O. RATING 10A U.N.O.	-	CLIPSAL WSCF227F	B
SIGN CONNECTION		COORDINATE THE LOCATION AND CONNECTION WITH THE SIGN CONTRACTOR ENSURING THE GPO / ISOLATORS ARE PROVIDED WITH APPROPRIATE WEATHER PROTECTION AND ARE CONCEALED FROM VIEW.			B
SINGLE-PHASE ISOLATOR		SINGLE-PHASE WEATHERPROOF ISOLATOR. MOUNT AT 1350mm AFFL U.N.O. RATING 20A U.N.O. CONNECT TO EQUIPMENT VIA FLEXIBLE CONDUIT.	-	CLIPSAL WHT20	B



ELECTRICAL DESIGN GROUP

ELECTRICAL BUILDING SERVICES CONSULTANTS

P.O. Box 15, SHERWOOD Q. 4075

Phone: (07) 3278 4375 Fax: (07) 3716 0222

Web Site: www.edg.net.au Email: brisbane@edg.net.au

C3461a - EAGERS MT GRAVATT - 1281 LOGAN ROAD

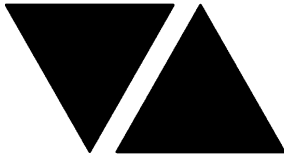
C3461a-0002(C).xls

ELECTRICAL EQUIPMENT SCHEDULE

REVISION C - 14 AUGUST 2025

THE LIGHT FITTING SUPPLIER CONTACT DETAILS MAY BE AVAILABLE ON THE EDG WEBSITE VIA THE FOLLOWING LINK
www.edg.net.au/Links/Lighting.htm

TYPE	LAMPS	DESCRIPTION	COLOUR / ACCESSORY	CATALOGUE No	REV
THREE-PHASE ISOLATOR		THREE-PHASE WEATHERPROOF ISOLATOR. MOUNT AT 1350mm AFFL U.N.O. RATING 20A U.N.O. CONNECT TO EQUIPMENT VIA FLEXIBLE CONDUIT. "RSD" DENOTES ROLLER SHUTTER DOOR SUPPLY - COORDINATE LOCATION ONSITE WITH MOTOR.	-	CLIPSAL WHT35	B
FLOOR BOX TYPE 1 (FB1)		INSITU FLUSH FLOOR BOX C/W A DOUBLE GPOS+ FACILITY FOR A COMMUNICATIONS OUTLETS FACEPLATE. PROVIDE A 32 DIA CONDUIT C/W A SPARE DRAW WIRE FROM THE REAR OF THE COMMUNICATIONS FACEPLATE TO THE CEILING SPACE ABOVE THE COMMUNICATIONS RACK CR-A. PROVIDE THE GPOS AS PER THE STANDARD DESCRIPTIONS.	STAINLESS STEEL	ECD FB2SHD	B
EV CHARGER 1 (EVC1)		OCULAR DC ATLAS 60KW OC-60HY4 EV CHARGER C/W DEMAND MANAGEMENT			B
EV CHARGER 2 (EVC2)		OCULAR IQ ROWER 22KW IOCAP06C-22 EV CHARGER C/W DEMAND MANAGEMENT			B
DB-A		DISTRIBUTION BOARD DB-A AS PER THE DB-A SCHEDULE AND NOTES. PROVIDE A SHOP DRAWING OF DB-A FOR APPROVAL.			B
MSB		MAIN SWITCHBOARD AS PER THE POWER SCHEMATIC AND THE NOTES. PROVIDE A SHOP DRAWING OF THE MAIN SWITCHBOARD FOR APPROVAL.			B
REVENUE METER (KWH)		NEM CODE COMPLIANT CT RETAIL METER INCLUDING ALL ASSOCIATED COMPONENTS			B
METERING TEST BLOCK METER (MTB)		QECM V4 COMPLIANT METERING TEST BLOCK INCLUDING ALL ASSOCIATED COMPONENTS			B
DEMAND METER (DM)		ELECTRIC VEHICLE CHARGING DEMAND MANAGEMENT SYSTEM CURRENT TRANSFORMER			B
ELECTRIC VEHICLE CHARGING ISOLATION SWITCH (CIS)		ELECTRIC VEHICLE CHARGING ISOLATION SWITCH PUSH BUTTON WIRED TO THE EV CHARGER SUPPLY CIRCUIT BREAKER SHUNT TRIP TO ISOLATE THE POWER TO THE ELECTRIC VEHICLE CHARGERS. MOUNTED AT 1800mm AFFL UNLESS NOTED OTHERWISE. PROVIDE COLOURED ENGRAVED TEXT AS PER THE CIS ELEVATION.	WHITE	CLIPSAL C2000 SERIES 30USM	B
CONTACTOR (Cx)		EV CONTROL LOAD BREAK CONTACTOR RATED ABOVE THE CIRCUIT BREAKER FAME SIZE			B
GENERATION SIGNALLING DEVICE (GSD)		QECM V4 COMPLIANT GENERATION SIGNALLING DEVICE INCLUDING ALL ASSOCIATED COMPONENTS			B
DEMAND RESPONSE SITE CONTROLLER (DRSC)		QECM V4 COMPLIANT DEMAND RESPONSE SITE CONTROLLER INCLUDING ALL ASSOCIATED COMPONENTS			B
MSSB		MECHANICAL SERVICES SWITCHBOARD PROVIDED BY THE MECHANICAL SUB CONTRACTOR. COORDINATE THE SUBMAIN CONNECTION WITH THE MECHANICAL SUB CONTRACTOR ON SITE.			B
SECURITY EQUIPMENT		SECURITY EQUIPMENT BY THE TENANTS SPECIALIST SECURITY CONTRACTOR			B



ELECTRICAL DESIGN GROUP

ELECTRICAL BUILDING SERVICES CONSULTANTS

P.O. Box 15, SHERWOOD Q. 4075

Phone: (07) 3278 4375 Fax: (07) 3716 0222

Web Site: www.edg.net.au Email: brisbane@edg.net.au

C3461a - EAGERS MT GRAVATT - 1281 LOGAN ROAD

C3461a-0002(C).xls

ELECTRICAL EQUIPMENT SCHEDULE

REVISION C - 14 AUGUST 2025

THE LIGHT FITTING SUPPLIER CONTACT DETAILS MAY BE AVAILABLE ON THE EDG WEBSITE VIA THE FOLLOWING LINK
www.edg.net.au/Links/Lighting.htm

TYPE	LAMPS	DESCRIPTION	COLOUR / ACCESSORY	CATALOGUE No	REV
PROPERTY POLE		NEW STEEL PROPERTY POLE TO ENERGEX REQUIREMENTS			C
PV INVERTER (INV-A)		33KW IP 66 3 PHASE PV INVERTER C/W 5 YEAR REPLACEMENT WARRANTY CONNECTED TO THE PV PANELS. REFER TO THE NOTES FOR ADDITIONAL REQUIREMENTS. PROVIDE DETAILS OF THE PV SYSTEM AND DESIGN FOR APPROVAL. CONNECT THE INVERTER TO THE ENERGEX GENERATION SIGNALLING DEVICE / DEMAND RESPONSE SITE CONTROLLER AS PER THE QECCM V4			B
PV PANELS		33KW OF PV PANELS C/W GALVANIZED MOUNTING BRACKET. PROVIDE PV PANELS WITH A 10 YEAR PRODUCT WARRANTY AND A 25 YEAR PANEL PERFORMANCE WARRANTY. REFER TO THE NOTES FOR ADDITIONAL REQUIREMENTS.			B

C3461a - EAGERS MT GRAVATT - 1281 LOGAN ROAD

C3461a-0004(B).xls

DISTRIBUTION BOARD DB-A

REVISION B - 06 JUNE 2025

[illegible]

C3461a - EAGERS MT GRAVATT - 1281 LOGAN ROAD

C3461a-0004(B).xls

DISTRIBUTION BOARD DB-A

REVISION B - 06 JUNE 2025

[illegible]

LEGEND

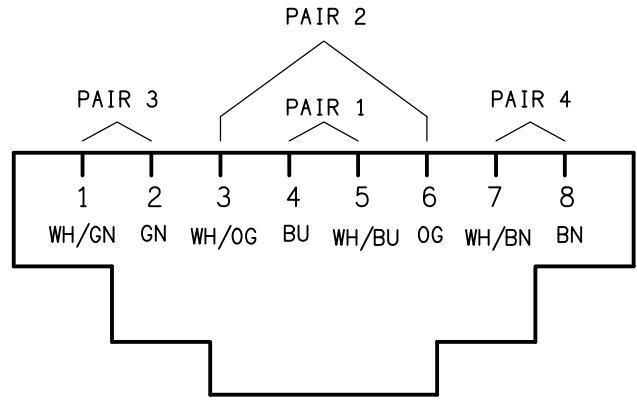
	ELECTRICAL SERVICES SWITCHBOARD.
	SWITCHBOARD / CONTROL PANEL NOT PROVIDED AS PART OF THE ELECTRICAL SUBCONTRACT.
	SINGLE POWER OUTLET.
	DOUBLE POWER OUTLET.
	DOUBLE POWER OUTLET C/W INTEGRAL USB CHARGERS.
	SPECIAL PURPOSE POWER OUTLET.
	SIGN OUTLET / CONNECTION.
	SINGLE PHASE ISOLATOR.
	THREE PHASE ISOLATOR.
	JUNCTION BOX.
	CONDUIT ROUTE.
	CABLE TRAY AS NOTED.
	ELECTRICAL PIT, TYPE AS NOTED.
	TELSTRA PIT.
	ELECTRICAL FLOOR BOX, TYPE AS NOTED.
	LIGHTING CONTROL SWITCH PANEL, TYPE AS NOTED.
	ONE-WAY LIGHT SWITCH.
	OCCUPANCY PRESENCE DETECTOR SWITCH.
	CIRCUIT LINE.
	SWITCH LINE.
	POWER CIRCUIT DESIGNATION. DENOTES DB AND CIRCUIT.
	LIGHTING CONTROL CHANNEL REFERENCE.
	MAIN DISTRIBUTION FRAME.
	ELECTRICAL EQUIPMENT AS NOTED.
	RJ45 CAT-6 COMMUNICATIONS OUTLET.
	NBN NETWORK TERMINATION DEVICE.
	NBN PREMISES CONNECTION DEVICE.
	ELECTRIC VEHICLE CHARGER.
	AUTO DOOR ENTRY PUSH BUTTON.
	AUTO DOOR EXIT PUSH BUTTON.
	AUTO DOOR MOTOR / CONTROLLER.
	SUPPLY AUTHORITY CODE COMPLIANT LV MAXIMUM DEMAND TARIFF METER.
	METERING TEST BLOCK METER.
	CONTACTOR.
	GENERATION SIGNALLING DEVICE.
	DEMAND RESPONSE SITE CONTROLLER.
	DEMAND EV CTs.
	ELECTRIC VEHICLE CHARGING ISOLATION SWITCH.

LEGEND

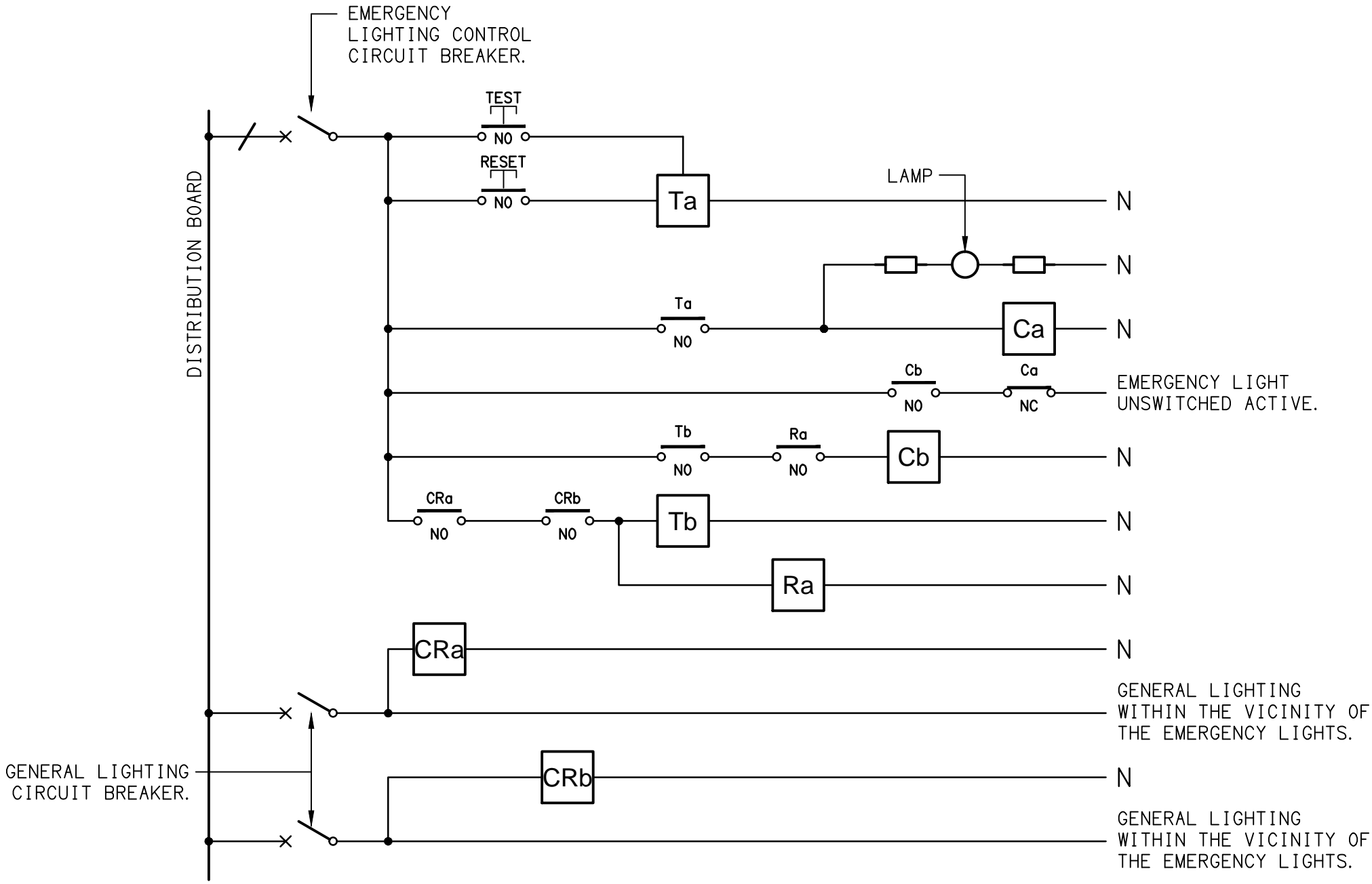
	CIRCUIT BREAKER C/W SHORT TRIP.
	FUSE.
	SINGLE PHASE.
	THREE PHASE.
	CURRENT TRANSFORMER C/W REMOVABLE LINK.
	FUSE LINK.
	COMBINED FUSE SWITCH.
	CIRCUIT BREAKER.
	ISOLATOR.
	RESIDUAL CURRENT DEVICE.
	CONTACTOR - NORMALLY OPEN.
	CONTACTOR - NORMALLY CLOSED.
	REFER TO DETAIL NOTED FOR THE AREA SHOWN HATCHED. ADDITIONAL OUTLETS & FITTINGS MAY BE SHOWN ON DETAIL.
	E1: GENERAL LED EMERGENCY LIGHT.
	EX: EMERGENCY LED EXIT LIGHT.
	L1: 30W CARPARK LIGHT MOUNTED ON A 4m HIGH POLE.
	L2: 600 x 600 RECESSED FLAT PLATE.
	L3: 300 x 600 RECESSED FLAT PLATE.
	L4: AMENITY RECESSED DOWNLIGHT.
	L5: RECESSED DOWNLIGHT.
	L6: RECESSED DOWNLIGHT.
	L7: RECESSED DOWNLIGHT.
	L8: DECORATIVE SUSPENDED PENDANT.
	L9: DECORATIVE SUSPENDED PENDANT.
	L10: DECORATIVE SUSPENDED PENDANT.
	L11: DECORATIVE SUSPENDED PENDANT.
	L12: 2400 LONG ROD SUSPENDED EXTRUSION LIGHT.
	L13: 5400 LONG ROD SUSPENDED EXTRUSION LIGHT.
	L14: 5400 LONG ROD SUSPENDED EXTRUSION LIGHT.
	L15: 150W CARPARK LIGHT MOUNTED ON A 9m HIGH POLE.
	L16: 50W CARPARK LIGHT MOUNTED ON A 9m HIGH POLE.
	L17: EXTERNAL WALL LIGHT TO REPLACE EXISTING.

EQUIPMENT:

TEST – TEST PUSH BUTTON MOUNTED ON THE DISTRIBUTION BOARD ESCUTCHEON.
RESET – RESET PUSH BUTTON MOUNTED ON THE DISTRIBUTION BOARD ESCUTCHEON.
LAMP – AMBER TEST INDICATING LAMP MOUNTED ON THE DISTRIBUTION BOARD ESCUTCHEON.
Ta – ADJUSTABLE 0-3 HOUR TIMED RELAY.
Tb – 15 MINUTE RUN-ON TIMER TO OPERATE UPON THE RETURN OF MAINS POWER.
Cx – CONTACTOR x.
CRx – CONTROL RELAY x.
Rx – RELAY x.



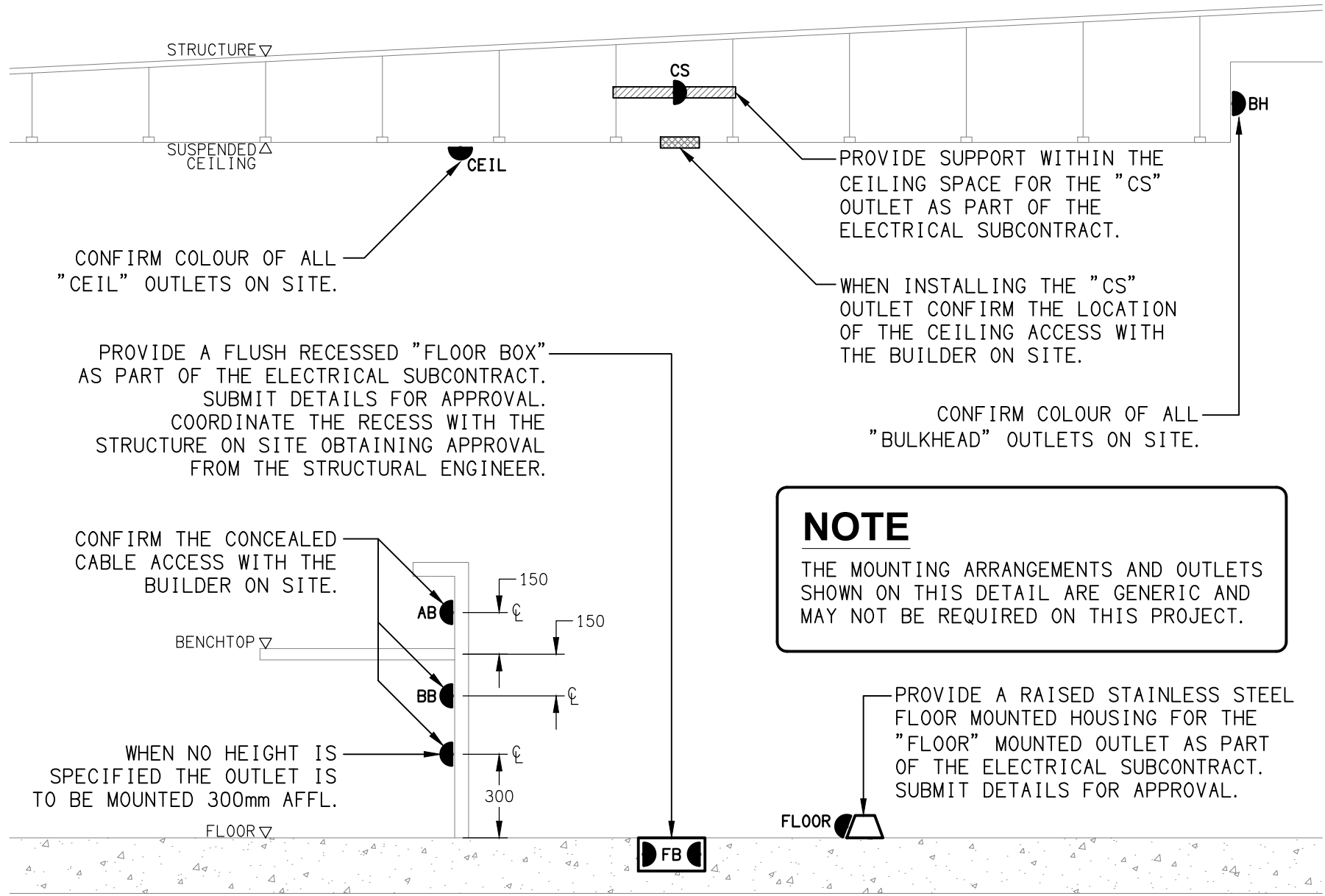
SCHEMATIC
RJ45 PINOUT CONFIGURATION
NOT TO SCALE



NOTES

1. THE EMERGENCY LIGHT UNSWITCHED ACTIVE / GENERAL LIGHTING SWITCHED ACTIVE CIRCUIT ARRANGEMENT AND CONTROL IS TYPICAL FOR ALL CIRCUITS SUPPLYING EMERGENCY LIGHTS.
2. PROVIDE ADDITIONAL CONTROL RELAYS (CRx) CONFIGURED AS PER CRa AND CRb FOR ALL ADDITIONAL LIGHTING CIRCUITS THAT SUPPLY LIGHTS IN THE VICINITY OF THE EMERGENCY LIGHTS.

SCHEMATIC
EMERGENCY LIGHTING
NOT TO SCALE



DETAIL
TYPICAL OUTLET MOUNTINGS
NOT TO SCALE

NOTES

1. EXTENT OF WORKS

THE ELECTRICAL SERVICES SUB-CONTRACT INCLUDES BUT IS NOT LIMITED TO THE FOLLOWING:

- SUPPLY AND INSTALLATION OF ALL COMPONENTS FORMING PART OF THE ELECTRICAL SERVICES.
- CO-ORDINATION.
- INSPECTIONS.
- TESTING AND COMMISSIONING.
- MAINTENANCE.
- AS BUILT DRAWINGS.
- OPERATION AND MAINTENANCE MANUAL.
- CABLING, CABLE SUPPORT SYSTEMS AND ACCESS.
- POWER DISTRIBUTION.
- LIGHTING.
- COMMUNICATIONS CABLING.
- ALL MINOR COMPONENTS AND INCIDENTAL WORKS NOT SPECIFICALLY REFERRED TO, HOWEVER NECESSARY TO COMPLETE THE ELECTRICAL SERVICES INSTALLATION SUCH THAT IT IS HANDED OVER COMPLETE, OPERATIONAL AND FIT FOR THE INTENDED USE.

ALL OF THE EXISTING ELECTRICAL SERVICES ARE TO BE REMOVED INCLUDING ANY EXISTING ELECTRICAL SERVICES WITHIN THE AREA OF THE EXISTING SITE THAT IS TO BE RESUMED INTO THE ROAD RESERVE.

SUPPLY ALL LABOUR, MATERIALS, EQUIPMENT, AND ALL OTHER ITEMS, WHETHER MENTIONED IN DETAIL OR NOT, REQUIRED FOR THE SATISFACTORY COMPLETION OF THE ELECTRICAL SERVICES INSTALLATION, LEAVING IN FULL WORKING ORDER TO THE SATISFACTION OF THE PROJECT MANAGER.

SUPPLY ALL LABOUR, MATERIALS, EQUIPMENT, AND ALL OTHER ITEMS, WHETHER MENTIONED IN DETAIL OR NOT, REQUIRED FOR THE SATISFACTORY COMPLETION OF THE ELECTRICAL SERVICES INSTALLATION, LEAVING IN FULL WORKING ORDER TO THE SATISFACTION OF THE PROJECT MANAGER.

ACCEPT FULL RESPONSIBILITY FOR LIASING, ARRANGING AND CO-ORDINATION OF ALL WORKS THAT HAVE AN EFFECT ON OR WILL BE AFFECTED BY THE ELECTRICAL SERVICES.

2. WORKMANSHIP

ENSURE THAT THE ELECTRICAL WORK IS PERFORMED BY THE HOLDER OF A CURRENT ELECTRICAL SUB CONTRACTOR LICENSE AND THE SERVICES COVERED BY THE ACMA IS PERFORMED BY THE HOLDER OF THE APPROPRIATE CURRENT ACMA LICENSE. ENSURE THE INSTALLATION AND ALL COMPONENTS, FIXTURES, FITTINGS, OUTLETS AND CABLES ARE SUPPLIED AND INSTALLED TO A HIGH STANDARD THROUGHOUT, AND INSTALLED IN A NEAT AND TRADESMAN LIKE MANNER, TO THE CURRENT INDUSTRY STANDARDS. ENSURE ALL MATERIALS AND COMPONENTS OF A SIMILAR TYPE ARE OF THE SAME MANUFACTURER AND INSTALLED IN A UNIFORM MANNER.

IT IS THE ELECTRICAL SUB CONTRACTOR'S RESPONSIBILITY TO ENSURE THAT THE INSTALLATION IS FIT FOR PURPOSE AND IS PROVIDED AS A COMPLETE WORKING INSTALLATION. IT IS THE ELECTRICAL SUB CONTRACTOR'S RESPONSIBILITY TO PROVIDE ALL COMPONENTS, FITTINGS, FIXTURES, SYSTEMS, PROGRAMMING ETC IRRESPECTIVE OF THE LEVEL DETAILED IN THE DOCUMENTS SUCH THAT THE INSTALLATION IS PROVIDED AS A COMPLETE WORKING INSTALLATION.

CONCEAL ALL WIRING AND CONDUITS. EXPOSED CABLING OR CONDUITS ARE GENERALLY NOT ACCEPTABLE. IT IS NOTED THAT CHASING AND REINSTATEMENT WILL BE REQUIRED. ENSURE ALL COMPONENTS, EQUIPMENT AND MATERIALS SUPPLIED ARE NEW, UNUSED, DESIGNED AND SELECTED TO ENSURE SATISFACTORY OPERATION UNDER VARYING ATMOSPHERIC, CLIMATIC, HUMID TROPICAL CONDITIONS WITHOUT DISTORTION AND DETERIORATION IN ANY PART AFFECTING EFFICIENCY AND RELIABILITY OF THE SYSTEMS. DESIGN AND SELECT ALL EQUIPMENT TO PROVIDE THE NECESSARY SAFETY TO HUMAN LIFE AND PROPERTY DURING OPERATION AND MAINTENANCE WITH PARTICULAR ATTENTION GIVEN TO ELECTRICAL SAFETY AND SEGREGATION PRECAUTIONS.

CHECK THE FINISHED PAINTWORK AROUND THE AREA OF EACH INSTALLATION AND TOUCH UP ALL DAMAGED PARTS AND FINISHES AFTER THE INSTALLATION OF THE ELECTRICAL SERVICES.

ALL WORKS ARE TO BE CARRIED OUT IN ACCORDANCE WITH THE BUILDER'S PROGRAM. ENSURE ALL FINAL LOCATIONS OF OUTLETS AND FITTINGS ARE CO-ORDINATED ONSITE WITH THE ARCHITECT AND ALL OTHER SERVICES, TO THE APPROVAL OF THE PROJECT MANAGER. ALLOW TO CO-ORDINATE THE FINAL LOCATION OF ALL EQUIPMENT, FITTINGS, & OUTLETS, SUCH THAT THEY ARE INSTALLED IN ACCORDANCE WITH THE AS3000 RESTRICTED ZONES, AND ARE NOT COVERED INAPPROPRIATELY.

ENSURE THAT ALL METAL SURFACES ARE SUITABLY PROTECTED AGAINST CORROSION, AND THAT ALL PLASTIC MATERIALS ARE UV STABILISED.

PROVIDE ALL MATERIALS AS NEW, AND OF THE HIGHEST CLASS AVAILABLE FOR THEIR RESPECTIVE TYPES. ENSURE ALL ASPECTS OF THE WORK ARE OF A HIGH STANDARD THROUGHOUT, AND INSTALLED IN A NEAT AND TRADESMAN LIKE MANNER, TO THE CURRENT INDUSTRY STANDARDS.

IRRESPECTIVE OF INFORMATION CONTAINED IN THE ELECTRICAL SERVICES DOCUMENTS OR IN INSTRUCTIONS, IT IS THE ELECTRICAL SUB CONTRACTOR'S RESPONSIBILITY TO ENSURE ALL ELECTRICAL SERVICES WORKS ARE INSTALLED IN ACCORDANCE WITH THE REQUIREMENTS OF THE FOLLOWING. REFER ANY DISCREPANCIES BETWEEN THE REQUIREMENTS OF THE FOLLOWING AND/OR THE ELECTRICAL SERVICES DOCUMENTS AND INSTRUCTIONS TO THE ARCHITECT FOR CLARIFICATION PRIOR TO THE PLACING OF ORDERS, FABRICATION OR INSTALLATION OF THE ITEMS/METHODS IN DISCREPANCY.

- NCC BUILDING CODE OF AUSTRALIA.
- ELECTRICITY ACT.
- ELECTRICAL SAFETY ACT.
- ENERGEX REQUIREMENTS.
- THE QUEENSLAND ELECTRICITY CONNECTION MANUAL V4 (QECM) AND THE NATIONAL ELECTRICITY METERING STANDARDS (NEM).
- AS/NZS3000.
- AS3008.
- LOCAL BRIGADE.
- WORKPLACE HEALTH AND SAFETY ACT.
- TELECOMMUNICATIONS ACT.
- ACMA REQUIREMENTS.

3. AUTHORITIES

ENSURE ALL OF THE ELECTRICAL SERVICES COMPLY WITH THE REQUIREMENTS OF ALL REGULATORY AUTHORITIES HAVING JURISDICTION OVER THE SITE INCLUDING BUT NOT LIMITED TO THE FOLLOWING:

- ACMA.
- LOCAL COUNCIL.
- ENERGEX.
- STATE GOVERNMENT DEPARTMENT OF ENVIRONMENT AND HERITAGE.
- QLD GOVERNMENT, DIVISION OF WORKPLACE, HEALTH AND SAFETY.
- QLD FIRE AND EMERGENCY SERVICES.

4. CABLES

UNLESS OTHERWISE SPECIFIED, INSTALL AND TERMINATE CABLES IN ACCORDANCE WITH THE MANUFACTURERS' RECOMMENDATIONS. DETERMINE THE FINAL ROUTES TO SUIT THE BUILDING STRUCTURE AND SITE CONDITIONS. UNLESS NOTED OTHERWISE, PROVIDE ALL 240 VOLT POWER AND LIGHTING WIRING AS 2.5mm² TWIN & EARTH STRANDED COPPER CONDUCTORS, PVC INSULATED 0.6/1kV V75 GRADE TO AS3174, PROTECTED BY A 20 AMP CIRCUIT BREAKER. ALL CONDUIT AND FITTINGS TO BE RIGID UPVC TO AS2053, UNLESS NOTED OTHERWISE.

NOTES

5. POWER DISTRIBUTION

PROVIDE A NEW ENERGEX COMPLIANT STEEL PROPERTY POLE WITH NEW UNDERGROUND CONSUMERS MAINS FROM THE PROPERTY POLE TO THE MAIN SWITCHBOARD. ARRANGE FOR THE NEW 200 AMP ENERGEX OVERHEAD SERVICE TO BE CONNECTED TO THE NEW PROPERTY POLE. THE EXISTING ENERGEX SERVICE AND PROPERTY POLE IS TO BE REMOVED.

PROVIDE THE MAIN SWITCHBOARD (MSB) AS FOLLOWS:

- PLINTH MOUNTED.
- NATIONAL ELECTRICITY MARKET (NEM) COMPLIANT RETAIL METERING.
- PROVIDE A COPY OF THE ENERGEX APPROVAL OF THE MSB.
- IP44 FORM 2A
- LIGHT GREY POWDER COATED ENCLOSURE AND DOORS.
- POWDER COATED GLOSS WHITE ESCUTCHEONS.
- LIFT OFF HINGES ON ALL DOORS AND ESCUTCHEONS.
- 1/4 TURN LATCHES AND D HANDLES ON ALL ESCUTCHEONS.
- ALL SWITCHGEAR TO BE SCHNEIDER OR NHP/ TERASAKI.
- PROVIDE SHOP DRAWINGS FOR APPROVAL.
- ALL COMPONENTS ARE TO BE LABELLED WITH NON-STICK LABELS.

PROVIDE THE DISTRIBUTION BOARD AS FOLLOWS:

- WALL MOUNTED.
- IP44 FORM 1.
- LIGHT GREY ENCLOSURE WHITE ESCUTCHEON.
- 3 POINT 92268 KEY LOCKABLE FLUSH HANDLES ON ALL DOORS.
- LIFT OFF HINGES ON ALL DOORS AND ESCUTCHEONS.
- 1/4 TURN LATCHES AND D HANDLES ON ALL ESCUTCHEONS.
- ALL SWITCHGEAR TO BE SCHNEIDER OR NHP/ TERASAKI.
- PROVIDE SHOP DRAWINGS FOR APPROVAL.
- 25% SPARE POLES AT PRACTICAL COMPLETION.
- ALL COMPONENTS ARE TO BE LABELLED WITH NON-STICK LABELS.

ENSURE ALL THREE PHASE CIRCUITS ARE PROVIDED WITH CORRECT PHASE ROTATION.

ENSURE ALL OUTLETS AND ISOLATORS ARE POSITIONED SUCH THAT THEY ARE NOT COVERED BY THE EQUIPMENT.

THE POWER DISTRIBUTION COMPONENT OF THIS CONTRACT INCLUDES, BUT IS NOT LIMITED TO THE FOLLOWING EXTENT OF WORK:

- POWER DISTRIBUTION.
- RETAIL METERING.
- PROPERTY POLE.
- CONSUMERS MAINS.
- MAIN SWITCHBOARD.
- SUBMAINS.
- DISTRIBUTION BOARD.
- PV SYSTEM INCLUDING THE ENERGEX APPLICATION.
- CABLE ACCESS WAYS.
- CIRCUITS.
- ISOLATORS AND OUTLETS.
- TESTING AND COMMISSIONING.
- THERMOSCAN THE MSB AND THE DISTRIBUTION BOARD ONE WEEK AFTER PRACTICAL COMPLETION.

PROVIDE A CHART RECORDING OF THE MAINS CURRENT, VOLTAGE, FREQUENCY FOR THE FIRST 14 DAYS FOLLOWING PRACTICAL COMPLETION AND SUBMIT THE THERMOSCAN CHART RECORDING AND FOR APPROVAL.

PROVIDE A 33KW SOLAR PHOTOVOLTAIC SYSTEM IN ACCORDANCE WITH AS 5033 WITH THE PV INSTALLATION UNDERTAKEN BY AN ACCREDITED INSTALLER MEMBER OF THE CLEAN ENERGY COUNCIL.

PROVIDE PV PANELS WITH AN EFFICIENCY IN EXCESS OF 20% AND A MANUFACTURERS 15-YEAR PRODUCT WARRANTY AND A PERFORMANCE WARRANTY GUARANTYING 80% OF THE PANELS RATED OUTPUT AFTER 25 YEARS. PROVIDE AN INVERTER THAT HAS A W I F I INTERNET CONNECTION, A LOSS OF LESS THAN 5% AND A MANUFACTURERS PRODUCT WARRANTY OF 5 YEARS. PROVIDE THE PV SYSTEM DC AND AC CABLING THAT HAS A LESS THAN COMBINED LOSS LESS THAN 3%. PROVIDE SHOP DRAWINGS AND TECHNICAL DETAILS OF THE PV SYSTEM INCLUDING ALL COMPONENTS AND THE PV PANEL LAYOUT FOR APPROVAL.

6. LIGHTING

THE LIGHTING COMPONENT OF THE ELECTRICAL SERVICES SUB-CONTRACT INCLUDES ALL OF THE INTERNAL AND EXTERNAL LIGHT FITTINGS, LAMPS AND ACCESSORIES. PROVIDE ALL NECESSARY ACCESSORIES TO FACILITATE THE COMPLETE LIGHTING INSTALLATION. THE LIGHTING COMPONENT OF THE ELECTRICAL SERVICES SUB-CONTRACT INCLUDES THOUGH IT IS NOT LIMITED TO THE FOLLOWING EXTENT OF WORK:

- INTERNAL AND EXTERNAL LIGHTING.
- EMERGENCY AND EXIT LIGHTING.
- EARTHING OF THE LIGHTING INSTALLATION.
- LIGHTING CONTROL.
- LIGHTING SUBCIRCUITS.
- TESTING AND COMMISSIONING.

PROVIDE A SINGLE POINT EMERGENCY LIGHTING SYSTEM THAT COMPLIES WITH THE LATEST ISSUE OF ALL PARTS AS2293 AND THE RELEVANT PARTS OF THE NCC BCA. INSTALL EMERGENCY LIGHT FITTINGS NOMINATED AS MAINTAINED WITH THE LAMP PERMANENTLY ON SUPPLIED VIA AN UNSWITCHED ACTIVE MAINS SUPPLY WHEN THE MAINS SUPPLY IS AVAILABLE. WHEN THE MAINS SUPPLY IS NOT AVAILABLE, THE LAMP IS TO REMAIN ON SUPPLIED BY THE EMERGENCY PACK. SINGLE LAMP MAINTAINED EMERGENCY LIGHTS ARE NOT SWITCHED WITH THE LOCAL GENERAL AREA LIGHTING. (THE LAMP IS ALWAYS ON.)

INSTALL EMERGENCY LIGHT FITTINGS NOMINATED AS NON-MAINTAINED AS FOLLOWS:

- IF THE FITTING IS NOT BEING SWITCHED, THE LAMP IS TO REMAIN OFF WHEN THE MAINS SUPPLY IS AVAILABLE. WHEN THE MAINS SUPPLY IS NOT AVAILABLE THE LAMP IS TO BE SWITCHED ON SUPPLIED BY THE EMERGENCY PACK. UNSWITCHED SINGLE LAMP NON-MAINTAINED EMERGENCY LIGHTS ARE NOT SWITCHED WITH THE LOCAL GENERAL AREA LIGHTING. (THE LAMP IS ON ONLY WHEN THE MAINS SUPPLY IS NOT AVAILABLE.)
- IF THE FITTING IS BEING SWITCHED, THE LAMP IS TO BE SUPPLIED AND CONTROLLED WITH THE LOCAL GENERAL AREA LIGHTING WHEN THE MAINS SUPPLY IS AVAILABLE. WHEN THE MAINS SUPPLY IS NOT AVAILABLE THE LAMP IS TO BE SWITCHED ON, SUPPLIED BY THE EMERGENCY PACK. (THE LAMP IS ON WHEN TURNED ON WITH THE LOCAL GENERAL LIGHTING OR THE MAIN SUPPLY IS NOT AVAILABLE.)

NOTES

7. TELECOMMUNICATIONS SERVICE

THE COMMUNICATIONS CABLING COMPONENT OF THIS CONTRACT INCLUDES THE PROVISION OF A NEW NBN SERVICE TO THE SITE VIA A NEW LEADIN CONDUIT TO A NBN PCD. THE PCD IS TO BE CONNECTED TO A RACK MOUNTED NTD VIA A DROP CONDUIT. ARRANGE FOR THE NBN SERVICES TO BE INSTALLED INCLUDING ALL CABLE ACCESS WAYS AND DOCUMENTATION IN ACCORDANCE WITH THE NBN REQUIREMENTS. PROVIDE A FULL HEIGHT COMMUNICATIONS RACK CR-A.

PROVIDE THE COMMUNICATIONS CABLING COMPONENT OF THIS CONTRACT AS A COMMSCOPE OR MOLEX CAT 6 INSTALLATION WITH A 15 YEAR MANUFACTURERS PERFORMANCE WARRANTY. THE COMMUNICATIONS CABLING IS TO BE RUN TO PATCH PANELS WITHIN RACK CR-A.

THE COMMUNICATIONS CABLING COMPONENT OF THIS CONTRACT INCLUDES, BUT IS NOT LIMITED TO THE FOLLOWING EXTENT OF WORK:

- NBN APPLICATION AND LEADIN SERVICES.
- NBN CABLE ACCESS WAYS INCLUDING THE PCD AND NTDs.
- COMMUNICATIONS RACKS.
- CAT 6 COMMUNICATIONS OUTLETS AND CABLING.
- CAT 6 PATCH PANELS.
- CABLE ACCESS WAYS.
- TESTING AND COMMISSIONING.


8. ABBREVIATIONS

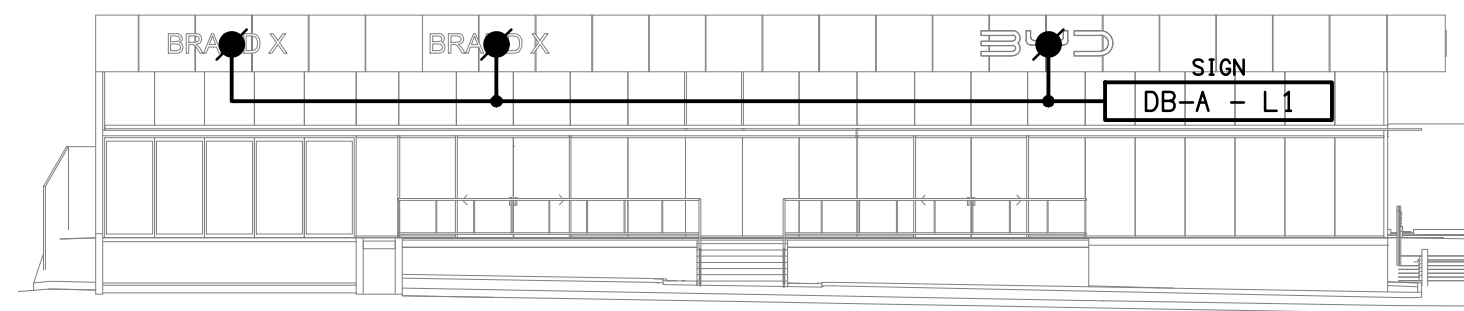
- A - AMP CURRENT RATING
- AB - MOUNT ABOVE BENCH.
- AFFL - ABOVE FINISHED FLOOR LEVEL.
- BB - MOUNT BELOW BENCH.
- BH - MOUNT ON BULKHEAD.
- CEIL - MOUNT ON CEILING.
- CS - MOUNT WITHIN CEILING SPACE.
- C/W - COMPLETE WITH.
- DR - DRYER.
- DW - DISHWASHER.
- HWS - HOT WATER SYSTEM.
- MCB - MINIATURE CIRCUIT BREAKER.
- MCCB - MOLDED CASE CIRCUIT BREAKER.
- MDB - MAIN DISTRIBUTION BOARD.
- MEN - MULTIPLE EARTH NEUTRAL LINK.
- MSB - MAIN SWITCHBOARD.
- MSSB - MECHANICAL SERVICES SWITCHBOARD.
- MW - MICROWAVE.
- N - NEON / LED INDICATOR WHEN ON.
- NTS - NOT TO SCALE.
- OV - OVEN.
- RCCB - CIRCUIT PROTECTED VIA A 30mA RESIDUAL CURRENT DEVICE INTEGRAL TO THE CIRCUIT BREAKER.
- REF - REFRIGERATOR.
- UNO - UNLESS NOTED OTHERWISE.
- WM - WASHING MACHINE.
- WP - WEATHERPROOF TO IP56 UNO.
- 500 - NUMBER DENOTES MOUNTING HEIGHT AFFL.

9. MANAGED SOLUTIONS

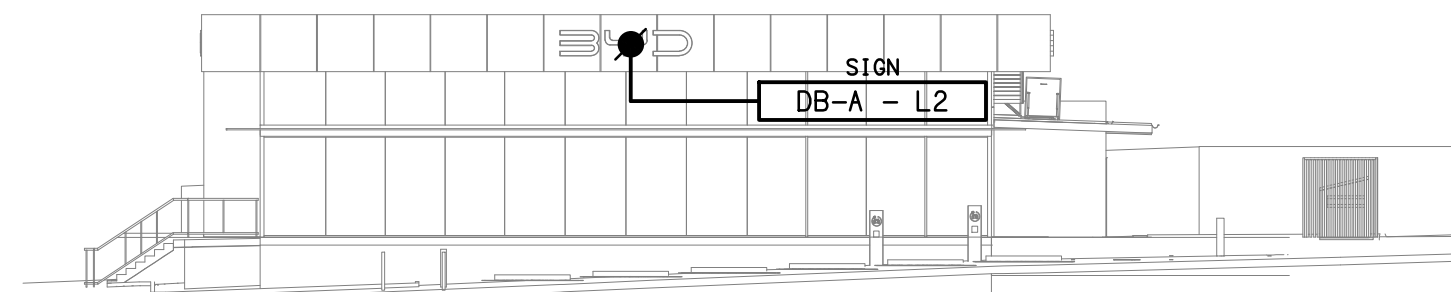
COORDINATE WITH THE TENANTS SPECIALIST CONTRACTOR MANAGED SOLUTIONS WHO WILL BE PROVIDING THE FOLLOWING SYSTEMS AND CABLING DIRECTLY TO THE TENANT:

- COMMUNICATIONS.
- TIE CABLES.
- COMMUNICATIONS RACK.
- UPS AND ALL ACTIVE NETWORK EQUIPMENT.
- PATCH PANELS, PATCH LEADS AND RACK CABLE MANAGEMENT.
- COMMUNICATIONS CABLING AND OUTLETS.
- CCTV.
- ACTIVE CENTRAL PROCESSING AND RECORDING EQUIPMENT.
- CABLING, OUTLETS AND CAMERAS.
- MONITORS.
- CAMERA HOUSINGS AND MOUNTINGS.
- INTRUDER DETECTION.
- ACTIVE CENTRAL PROCESSING EQUIPMENT.
- CABLING, DETECTORS, KEY PANELS , STROBES AND SIRENS.
- MONITORING.
- ACCESS CONTROL.
- ACTIVE CENTRAL PROCESSING EQUIPMENT.
- CABLING, DOOR CONTROLLERS, STRIKES, AND DOOR HOLDERS.
- CARD READERS AND CARDS.
- BACK GROUND MUSIC.
- ACTIVE CENTRAL SOURCE, CONTROL AND AMPLIFICATION EQUIPMENT.
- CABLING AND SPEAKERS.
- MATV.
- ANTENNA.
- HEADEND AND DISTRIBUTION EQUIPMENT.
- CABLING AND OUTLETS.
- MONITORS.

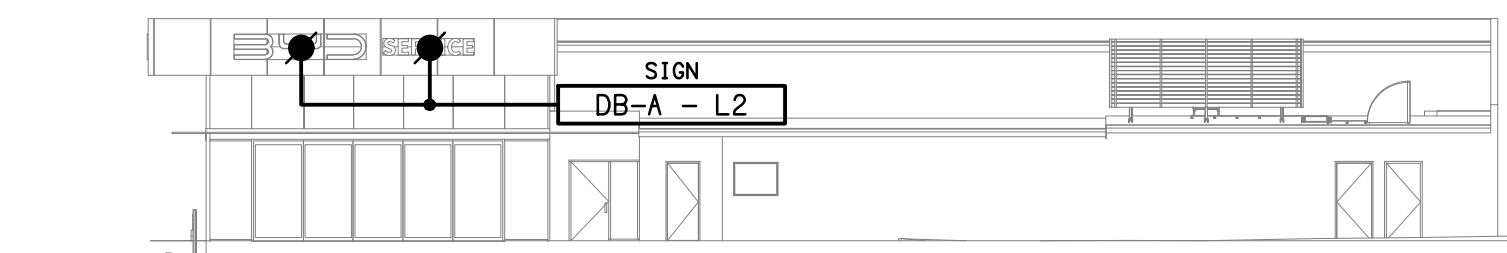
ELECTRICAL DESIGN GROUP BRISBANE PTY LTD ACN 092 710 793		THE COPYRIGHT OF THIS DRAWING REMAINS THE PROPERTY OF THE ELECTRICAL DESIGN GROUP.		USE FIGURED DIMENSIONS IN PREFERENCE TO SCALE.		ALL DIMENSIONS TO BE VERIFIED ONSITE.		 ELECTRICAL DESIGN GROUP ELECTRICAL BUILDING SERVICES CONSULTANTS BRISBANE GOLD COAST		PROJECT: EAGERS MT GRAVATT - 1281 LOGAN ROAD		C CONSTRUCTION 14/08/2025	
TRADING AS: ELECTRICAL DESIGN GROUP												REV: DESCRIPTION: DATE:	
												DRAWING: ELECTRICAL SERVICES NOTES	
SCALE: NOT TO SCALE AT A1		PROJECT NO: C3461a		DRAWING NO: E02		REVISION: C							



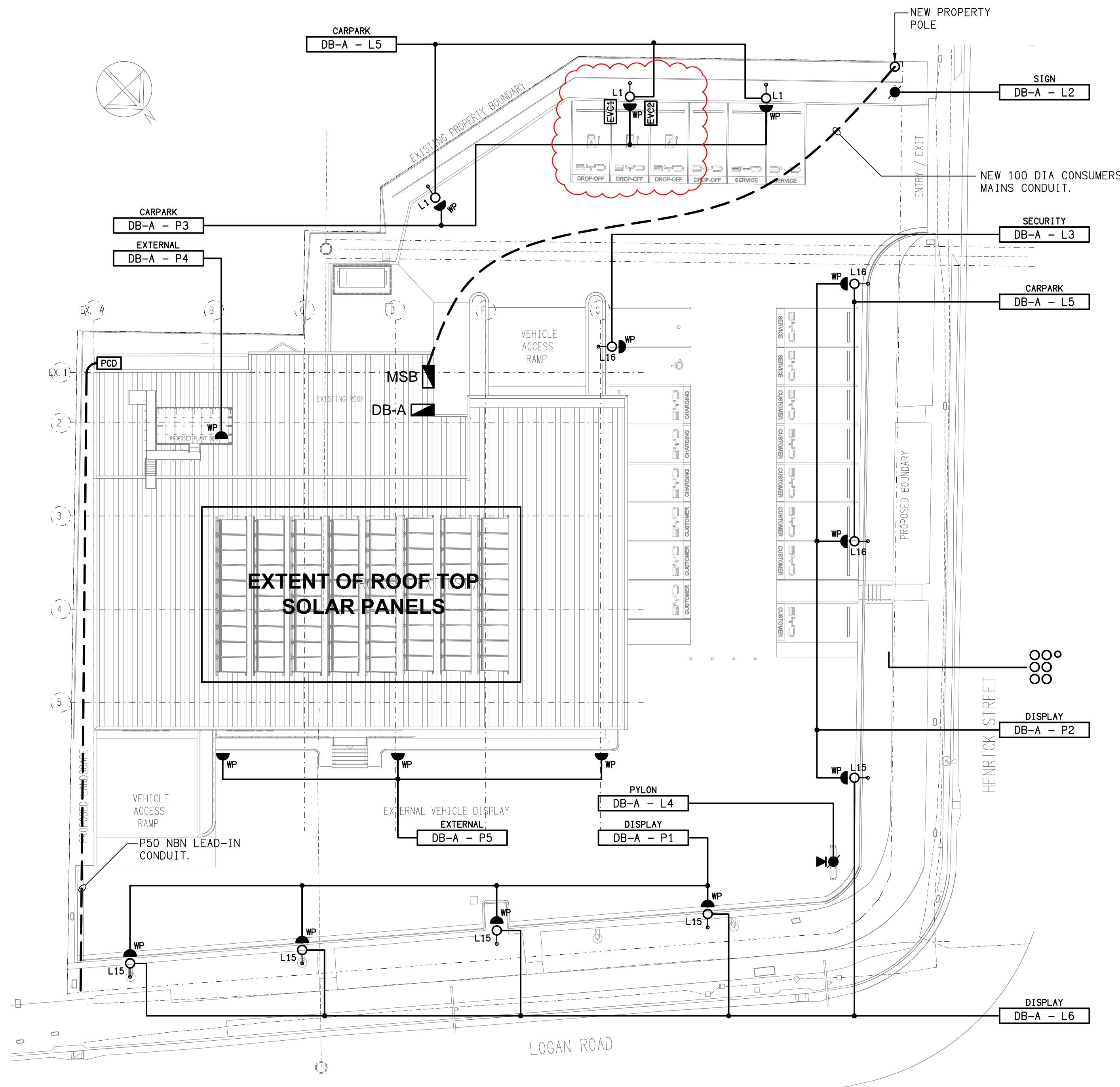
NORTH EAST
EXTERNAL BUILDING ELEVATION
SCALE 1:200



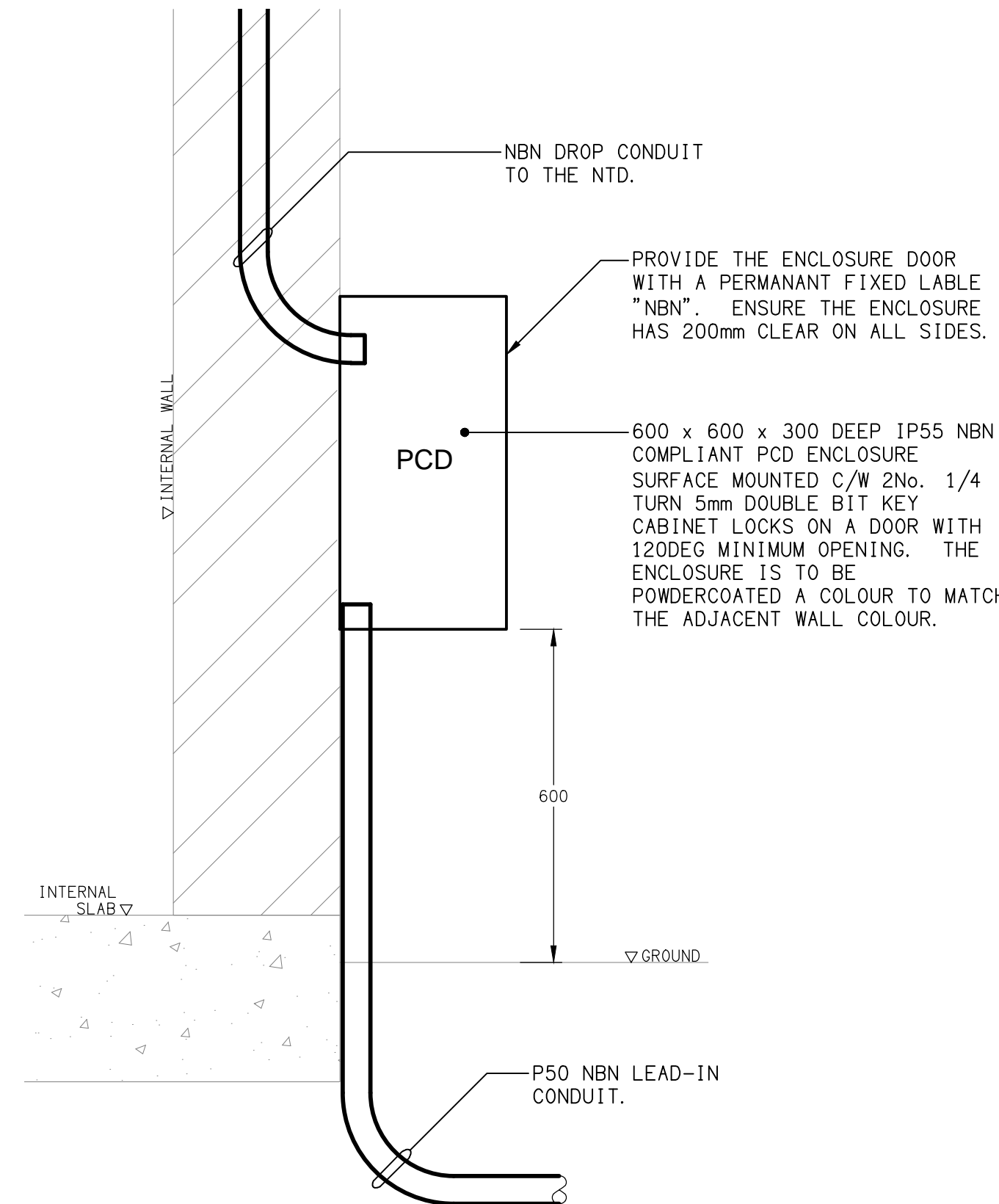
NORTH WEST
EXTERNAL BUILDING ELEVATION
SCALE 1:200



SOUTH WEST
EXTERNAL BUILDING ELEVATION
SCALE 1:200

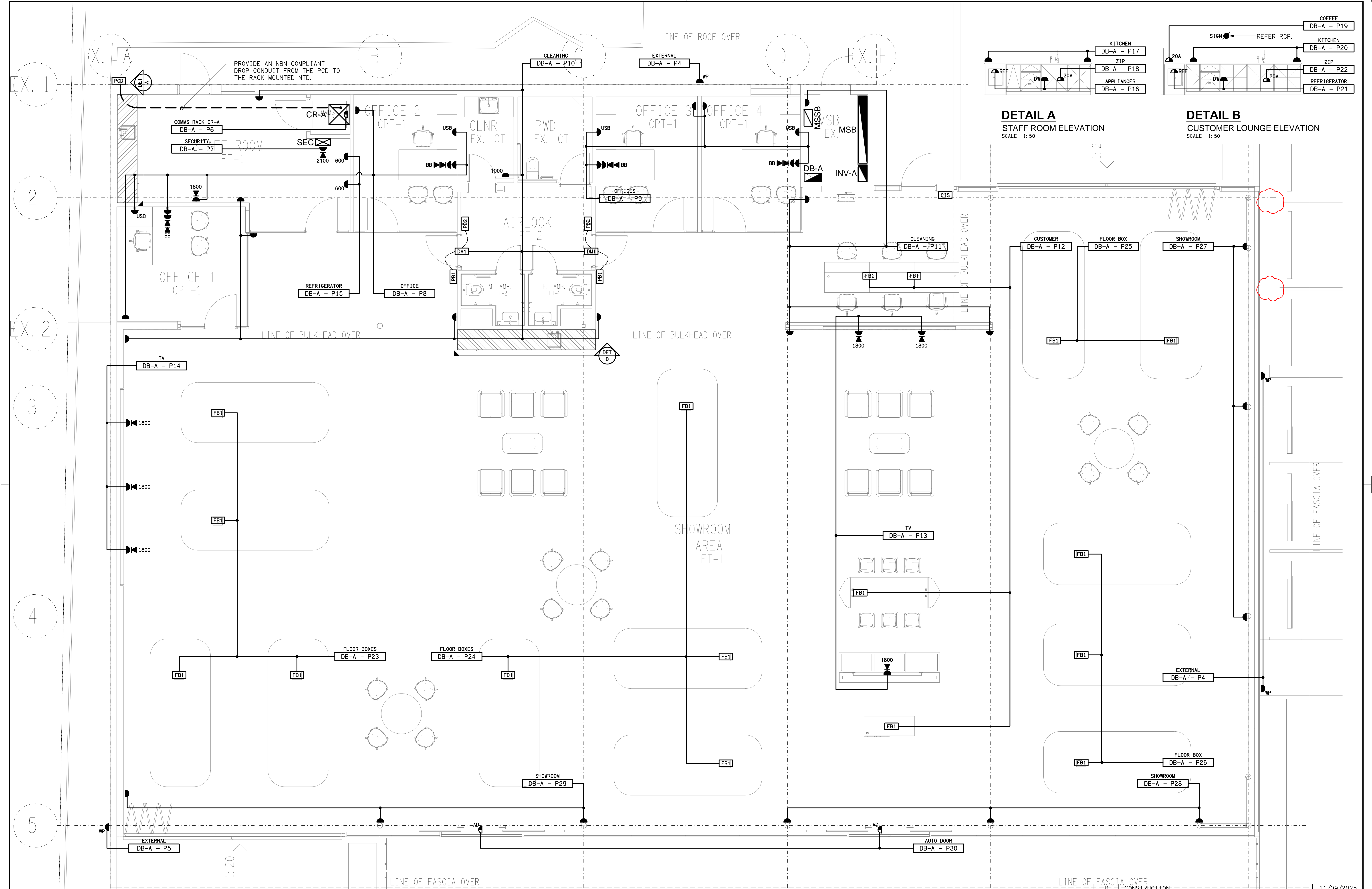


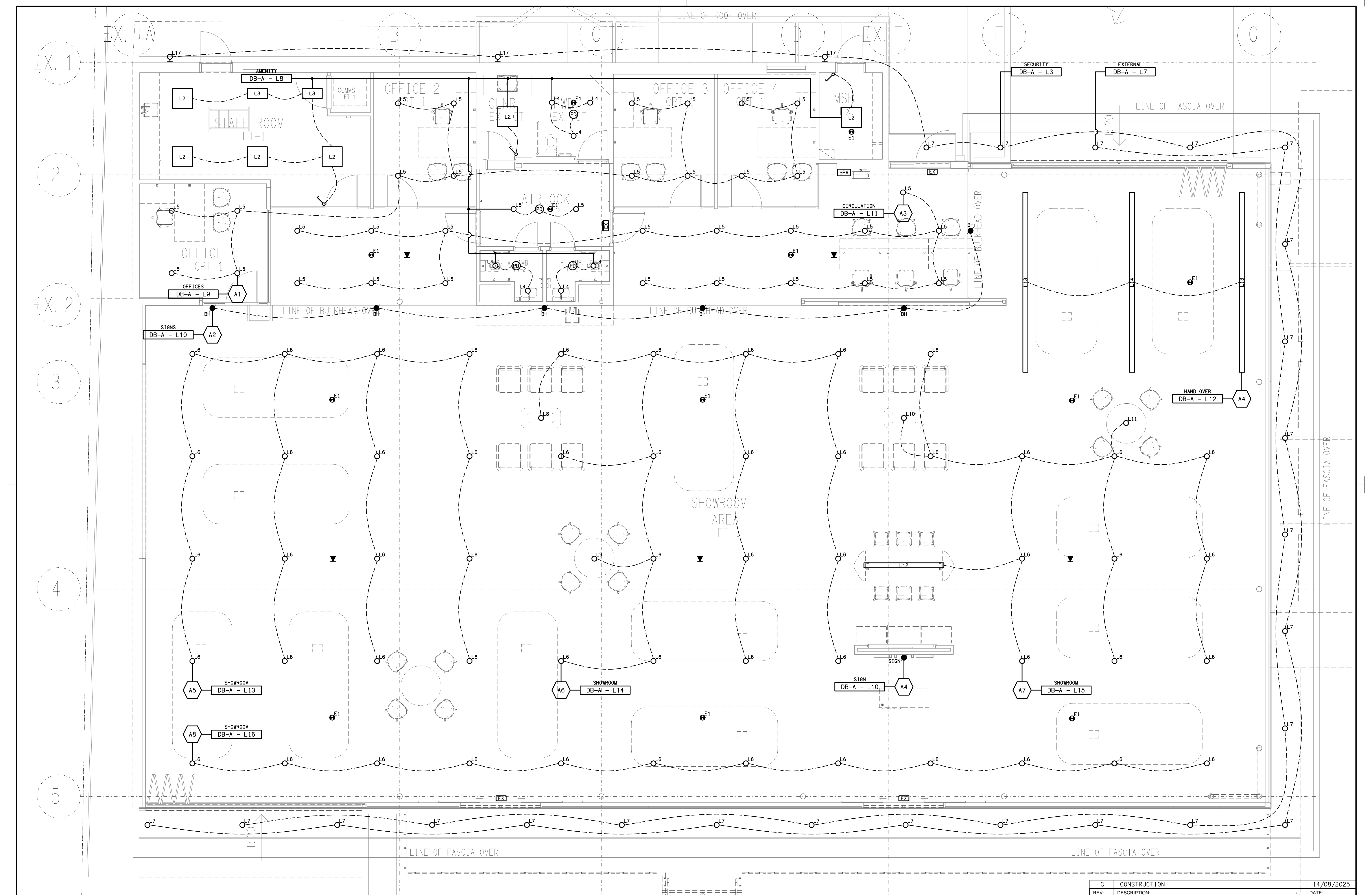
SITE / ROOF PLAN
1281 LOGAN ROAD
SCALE 1:200



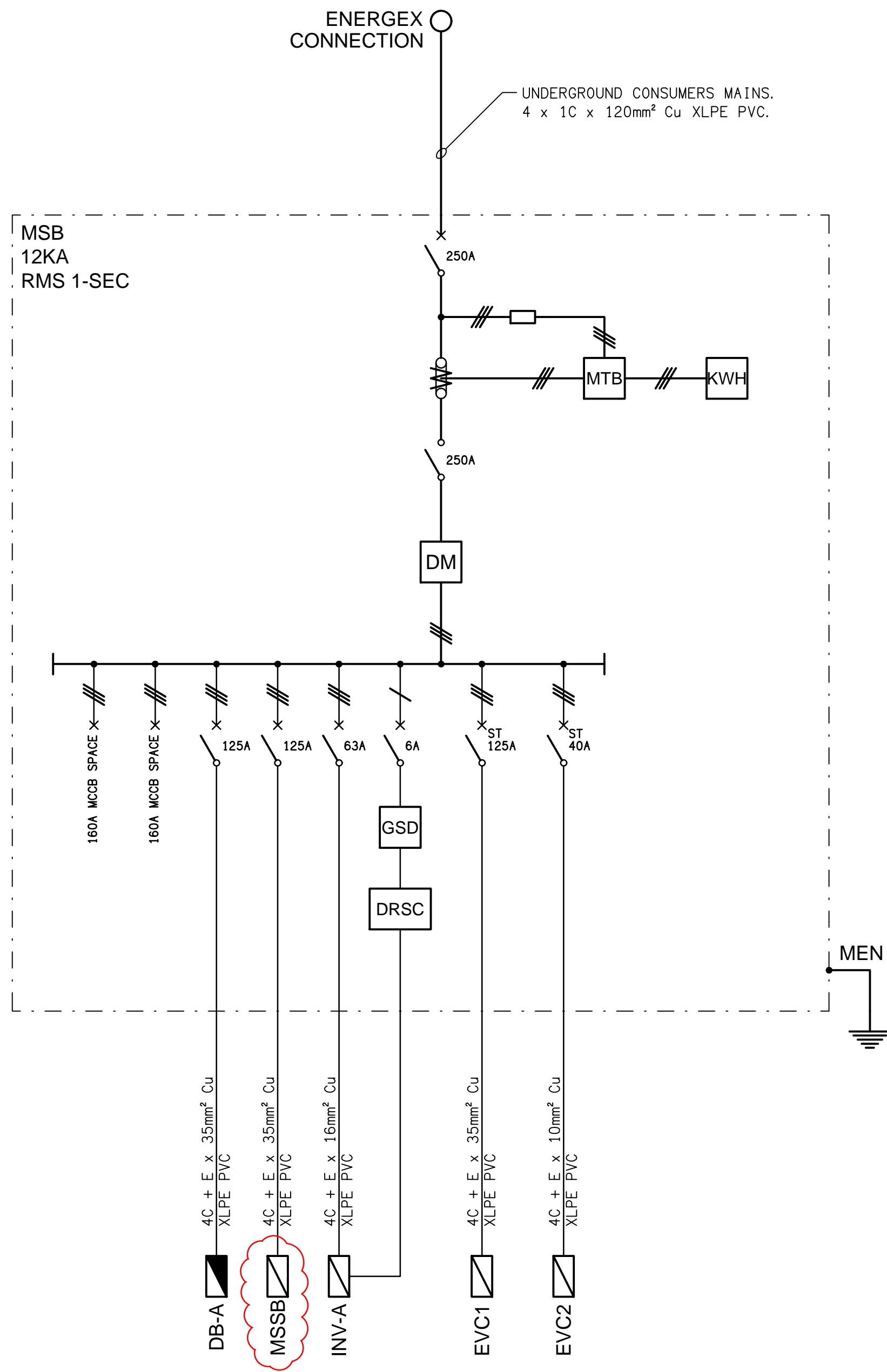
DETAIL
PCD MOUNTING
NOT TO SCALE



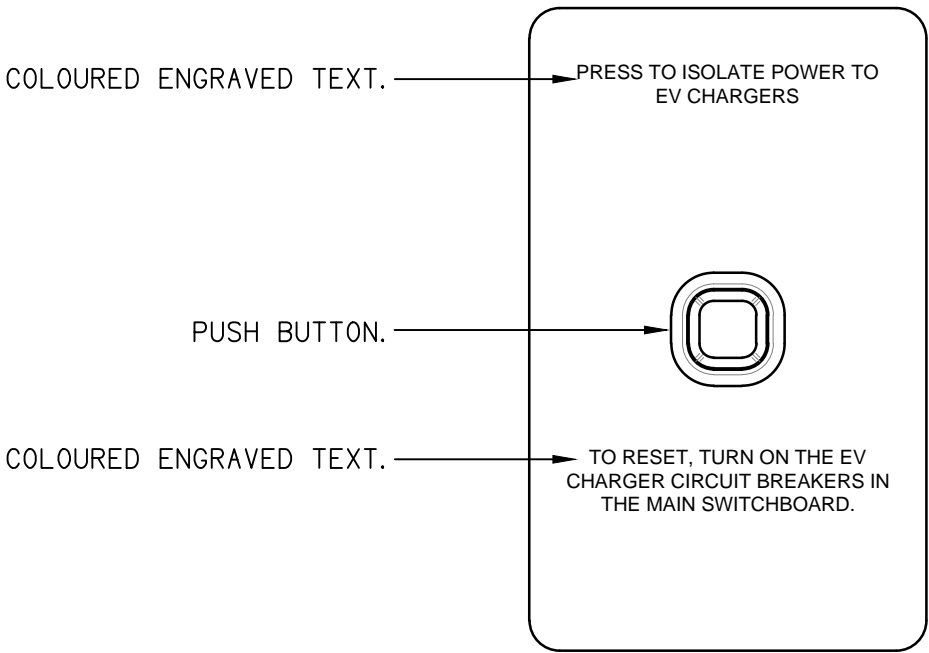




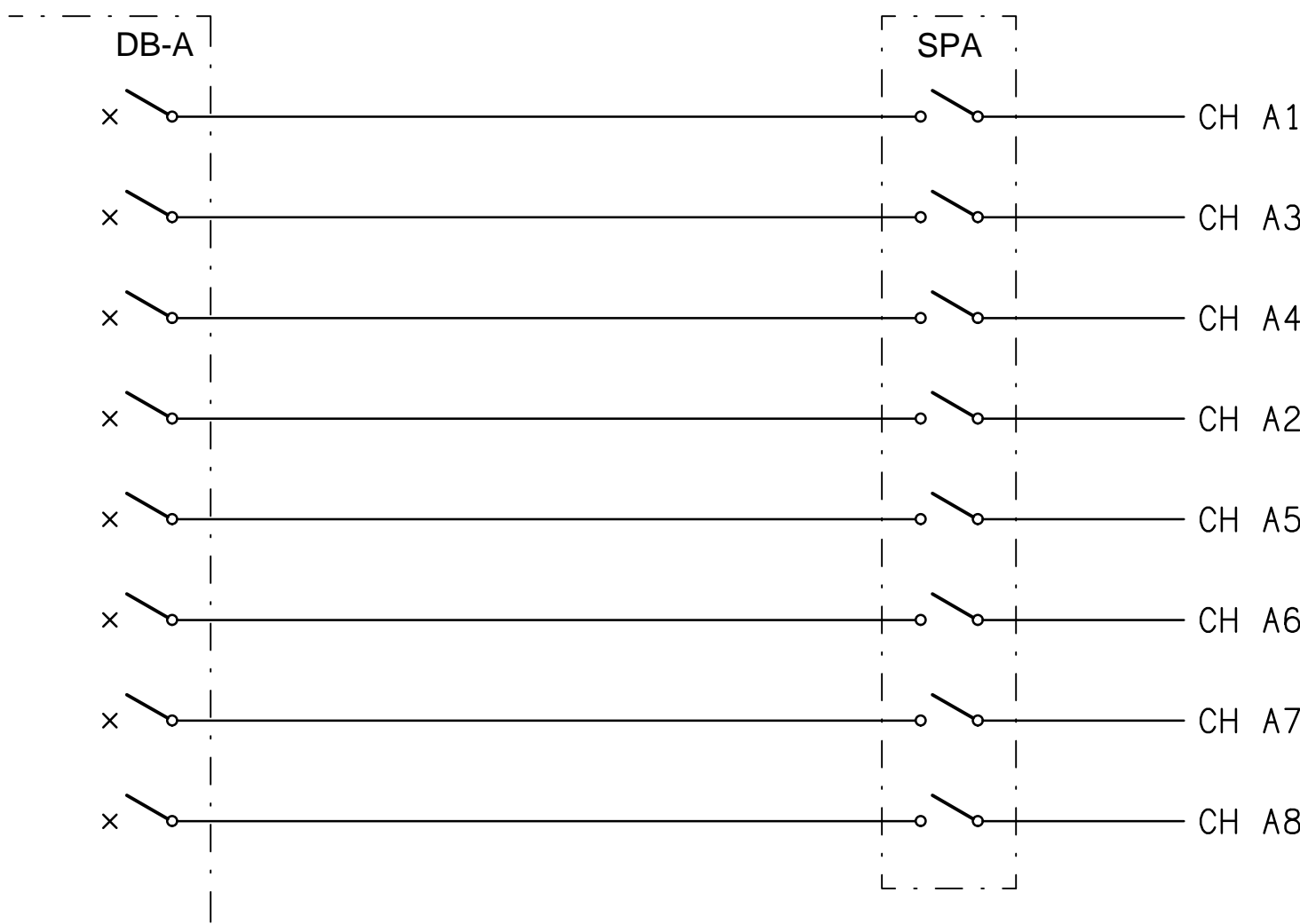
<div>ELECTRICAL DESIGN GROUP BRISBANE PTY LTD ACN 092 710 793 TRADING AS: ELECTRICAL DESIGN GROUP</div>	<div>THE COPYRIGHT OF THIS DRAWING REMAINS THE PROPERTY OF THE ELECTRICAL DESIGN GROUP. USE FIGURED DIMENSIONS IN PREFERENCE TO SCALE. ALL DIMENSIONS TO BE VERIFIED ONSITE.</div>	<div> ELECTRICAL DESIGN GROUP ELECTRICAL BUILDING SERVICES CONSULTANTS BRISBANE GOLD COAST <small>P.O. Box 15, Sherwood Q. 4075 Phone: (07) 3278 4375 Email: brisbane@edg.net.au Web: www.edg.net.au</small></div>	PROJECT: EAGERS MT GRAVATT - 1281 LOGAN ROAD		<div>C CONSTRUCTION REV. DESCRIPTION: 14/08/2025 DATE:</div>	
			DRAWING: ELECTRICAL SERVICES REFLECTED CEILING PLAN		PROJECT NO: C3461a	
			SCALE: 1:50		DRAWING NO: E05	
			AT A1		REVISION: C	



SCHEMATIC
MSB-A CONFIGURATION
NOT TO SCALE



DETAIL
ELECTRIC VEHICLE CHARGING ISOLATION SWITCH (CIS)
NOT TO SCALE



SCHEMATIC
LIGHTING CONTROL
NOT TO SCALE

ELECTRICAL DESIGN GROUP BRISBANE
PTY LTD
ACN 092 710 793

TRADING AS:
ELECTRICAL DESIGN GROUP

THE COPYRIGHT OF THIS DRAWING
REMAINS THE PROPERTY OF THE
ELECTRICAL DESIGN GROUP.

USE FIGURED DIMENSIONS
IN PREFERENCE TO SCALE.

ALL DIMENSIONS TO BE
VERIFIED ONSITE.

ELECTRICAL DESIGN GROUP
ELECTRICAL BUILDING SERVICES CONSULTANTS
BRISBANE GOLD COAST

P.O.Box 15, Sherwood Q.4075
Phone: (07) 3278 4375
Email: brisbane@edg.net.au
Web: www.edg.net.au

PROJECT:
EAGERS MT GRAVATT - 1281 LOGAN ROAD

C	CONSTRUCTION	14/08/2025
REV:	DESCRIPTION:	DATE:

DRAWING:
ELECTRICAL SERVICES
POWER & LIGHTING CONTROL SCHEMATICS

SCALE:
NOT TO SCALE AT A1

PROJECT NO:
C3461a

DRAWING NO:
E06

REVISION:
C