



ELECTRICAL DESIGN GROUP

ELECTRICAL BUILDING SERVICES CONSULTANTS

P.O. Box 15, SHERWOOD Q. 4075

Phone: (07) 3278 4375

Website: www.edg.net.au Email: brisbane@edg.net.au

C3556a - ROYAL HOTEL, BEENLEIGH

C3556a-0001(H).xls

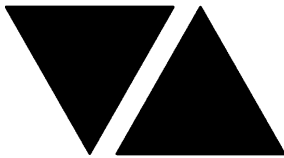
ELECTRICAL SERVICES CONTRACT DOCUMENT SCHEDULE

REVISION H - 13 OCTOBER 2025

| ISSUING INFORMATION | | | | DATE OF ISSUE | | | | | | | | | |
|---------------------|--|------------------|--|------------------|----|-----------------|----|------------|----|----|----|----|--|
| | | | | DAY | 10 | 18 | 18 | 06 | 19 | 26 | 27 | 13 | |
| | | | | MONTH | 06 | 06 | 06 | 08 | 08 | 08 | 08 | 10 | |
| | | | | YEAR | 25 | 25 | 25 | 25 | 25 | 25 | 25 | 25 | |
| REASON FOR ISSUE | | | | T | T | T | C | C | C | C | C | | |
| A = APPROVAL | | C = CONSTRUCTION | | N = COORDINATION | | P = PRELIMINARY | | T = TENDER | | | | | |

| DISTRIBUTION | | | | NUMBER OF COPIES | | | | | | | |
|-------------------------|--|--|--|------------------|----|----|----|-----------|----|----|----|
| WWW.EDG.NET.AU | | | | 1E | 1E | 1E | 1E | 1E | 1E | 1E | 1E |
| CAYAS & WARD ARCHITECTS | | | | 1E | 1E | 1E | 1E | 1E | 1E | 1E | 1E |
| | | | | | | | | | | | |
| | | | | | | | | | | | |
| | | | | | | | | | | | |
| | | | | | | | | | | | |
| P = PRINT | | | | T = TRACING | | | | D = DISC | | | |
| | | | | | | | | E = EMAIL | | | |
| | | | | | | | | F = FAX | | | |

| DOCUMENTS | TITLE | REVISION | | | | | | | | | |
|-----------------|---|----------|---|---|---|---|---|---|---|---|--|
| C3556a-E01.dwg | LEGEND & DETAILS | A | | | | B | | | | | |
| C3556a-E02.dwg | NOTES | A | | | | B | | | C | | |
| C3556a-E03.dwg | FLOOR PLAN | A | B | C | D | E | | F | | | |
| C3556a-E04.dwg | REFLECTED CEILING PLAN | A | B | | C | | | | | D | |
| C3556a-E05.dwg | JOINERY & WALL LIGHTING PLANS & DETAILS | A | | | B | C | | | | | |
| | | | | | | | | | | | |
| C3556a-0001.xls | CONTRACT DOCUMENT SCHEDULE | A | B | C | D | E | F | G | H | | |
| C3556a-0002.xls | EQUIPMENT SCHEDULE | A | B | | C | | D | E | | | |
| C3556a-0004.xls | LIGHTING CONTROL SCHEDULE | A | B | | | C | | | | | |
| C3556a-0005.xls | DISTRIBUTION BOARD DB-A SCHEDULE | A | | | | | | B | | | |
| | | | | | | | | | | | |
| C3556a-0001.zip | FITTING & OUTLET DATASHEETS | A | | | | | | | | | |
| | | | | | | | | | | | |
| | | | | | | | | | | | |
| | | | | | | | | | | | |
| | | | | | | | | | | | |



ELECTRICAL DESIGN GROUP

ELECTRICAL BUILDING SERVICES CONSULTANTS

P.O. Box 15, SHERWOOD Q. 4075

Phone: (07) 3278 4375 Fax: (07) 3716 0222

Web Site: www.edg.net.au Email: brisbane@edg.net.au

C3556a - ROYAL HOTEL, BEENLEIGH

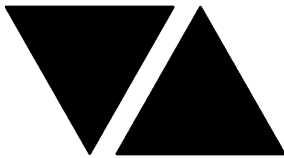
C3556a-0002(E).xls

ELECTRICAL EQUIPMENT SCHEDULE

REVISION E - 27 AUGUST 2025

THE LIGHT FITTING SUPPLIER CONTACT DETAILS MAY BE AVAILABLE ON THE EDG WEBSITE VIA THE FOLLOWING LINK
www.edg.net.au/Links/Lighting.htm

| TYPE | LAMPS | DESCRIPTION | COLOUR / ACCESSORY | CATALOGUE No | REV |
|------|------------------------|--|--------------------|--|-----|
| L1 | | GAMING BASE KICK LED STRIP LIGHTS TO BE PROVIDED AS PART OF THE GAMING BASE AND CONNECTED BY THE GAMING ELECTRICIAN. | | | B |
| L2 | 12W/M 2700K LED | FLEXIBLE LED ROPE FLEX SCREW FIXED RECESSED INTO THE JOINERY PELMET AS PER THE ARCHITECTURAL DETAIL. PROVIDE THE L2 STRIP WITH REMOTE DALI DIMMABLE POWER SUPPLIES AS REQUIRED LOCATE THE POWER SUPPLIES IN A CONCEALED ACCESSIBLE POSITION NOTED ON THE AS CONSTRUCTED DOCUMENTS. | WHITE | NPA L-NF-GLOW-VWW + POWER SUPPLY & DALI CONTROLLER | A |
| L3 | 880LM /M 3000K 24V LED | LED STRIP LIGHT IN A SCREW FIXED EXTRUSION C/W OPAL DIFFUSER MOUNTED BEHIND THE TV ALONG ALL FOUR SIDES AS PER THE ARCHITECTURAL DETAIL. PROVIDE THE L3 WITH A REMOTE DALI DIMMABLE POWER SUPPLY LOCATED IN A CONCEALED ACCESSIBLE POSITION NOTED ON THE AS CONSTRUCTED DOCUMENTS. | NATURAL | MELEC ML-ALU-1407-2M - ML-VLCRI-14.4-WWW | A |
| L4 | 880LM /M 3000K 24V LED | LED STRIP LIGHT IN A SCREW FIXED EXTRUSION C/W OPAL DIFFUSER MOUNTED IN THE GAMING CEILING PELMET AS PER THE ARCHITECTURAL DETAIL. PROVIDE EACH GROUP OF L4 STRIP WITH REMOTE DALI DIMMABLE POWER SUPPLIES AS REQUIRED LOCATE THE POWER SUPPLIES IN A CONCEALED ACCESSIBLE POSITION NOTED ON THE AS CONSTRUCTED DOCUMENTS. | NATURAL | MELEC ML-ALU-1407-2M - ML-VLCRI-14.4-WWW | A |
| L5 | 12W/M 2700K LED | FLEXIBLE LED ROPE FLEX SCREW FIXED RECESSED INTO THE ENTRY CEILING PELMET AS PER THE ARCHITECTURAL DETAIL. PROVIDE THE L5 STRIP WITH REMOTE DALI DIMMABLE POWER SUPPLIES AS REQUIRED LOCATE THE POWER SUPPLIES IN A CONCEALED ACCESSIBLE POSITION NOTED ON THE AS CONSTRUCTED DOCUMENTS. | WHITE | NPA L-NF-GLOW-VWW + POWER SUPPLY & DALI CONTROLLER | A |
| L6 | 880LM /M 3000K 24V LED | LED STRIP LIGHT IN A SCREW FIXED EXTRUSION C/W OPAL DIFFUSER MOUNTED IN THE GAMING CEILING PELMET AS PER THE ARCHITECTURAL DETAIL. PROVIDE EACH GROUP OF L6 STRIP WITH REMOTE DALI DIMMABLE POWER SUPPLIES AS REQUIRED LOCATE THE POWER SUPPLIES IN A CONCEALED ACCESSIBLE POSITION NOTED ON THE AS CONSTRUCTED DOCUMENTS. | NATURAL | MELEC ML-ALU-1407-2M - ML-VLCRI-14.4-WWW | A |
| L7 | 12W/M 2700K LED | FLEXIBLE LED ROPE FLEX SCREW FIXED WITHIN THE PLANTER AS PER THE ARCHITECTURAL DETAIL TO ILLUMINATE UP INTO THE PLANTS. PROVIDE THE L7 STRIP WITH REMOTE DALI DIMMABLE POWER SUPPLIES AS REQUIRED LOCATE THE POWER SUPPLIES IN A CONCEALED ACCESSIBLE POSITION NOTED ON THE AS CONSTRUCTED DOCUMENTS. | WHITE | NPA L-NF-GLOW-VWW + POWER SUPPLY & DALI CONTROLLER | D |



ELECTRICAL DESIGN GROUP

ELECTRICAL BUILDING SERVICES CONSULTANTS

P.O. Box 15, SHERWOOD Q. 4075

Phone: (07) 3278 4375 Fax: (07) 3716 0222

Web Site: www.edg.net.au Email: brisbane@edg.net.au

C3556a - ROYAL HOTEL, BEENLEIGH

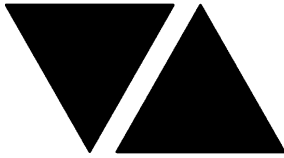
C3556a-0002(E).xls

ELECTRICAL EQUIPMENT SCHEDULE

REVISION E - 27 AUGUST 2025

THE LIGHT FITTING SUPPLIER CONTACT DETAILS MAY BE AVAILABLE ON THE EDG WEBSITE VIA THE FOLLOWING LINK
www.edg.net.au/Links/Lighting.htm

| TYPE | LAMPS | DESCRIPTION | COLOUR / ACCESSORY | CATALOGUE No | REV |
|------|------------------------|--|--------------------|--|-----|
| L8 | 880LM /M 3000K 24V LED | LED STRIP LIGHT IN A SCREW FIXED EXTRUSION C/W OPAL DIFFUSER MOUNTED IN THE COUNTER PELMET AS PER THE ARCHITECTURAL DETAIL. PROVIDE EACH GROUP OF L8 STRIP WITH REMOTE DALI DIMMABLE POWER SUPPLIES AS REQUIRED LOCATE THE POWER SUPPLIES IN A CONCEALED ACCESSIBLE POSITION NOTED ON THE AS CONSTRUCTED DOCUMENTS. | NATURAL | MELEC ML-ALU-1407-2M - ML-VLCRI-14.4-WW | A |
| L9 | 880LM /M 3000K 24V LED | MULTIPLE HORIZONTAL RUNS OF LED STRIP LIGHT IN A SCREW FIXED EXTRUSION C/W OPAL DIFFUSER FLUSH RECESSED INTO THE REAR BAR JOINERY AS PER THE ARCHITECTURAL DETAIL. REFER TO THE ELEVATIONS FOR THE NUMBER OF RUNS AND LENGTHS. PROVIDE REMOTE DALI DIMMABLE POWER SUPPLIES AS REQUIRED LOCATE THE POWER SUPPLIES IN A CONCEALED ACCESSIBLE POSITION NOTED ON THE AS CONSTRUCTED DOCUMENTS. IT IS ACCEPTABLE TO SUPPLY MULTIPLE L9 SECTIONS FROM A SINGLE SUITABLY SIZED DRIVER | NATURAL | MELEC ML-ALU-1407-2M - ML-VLCRI-14.4-WW | A |
| L10 | 12W/M 2700K LED | FLEXIBLE LED ROPE FLEX SCREW FIXED RECESSED INTO THE COUNTER PELMET AS PER THE ARCHITECTURAL DETAIL. PREFER TO THE ELEVATIONS FOR THE NUMBER OF RUNS AND LENGTHS. PROVIDE REMOTE DALI DIMMABLE POWER SUPPLIES AS REQUIRED LOCATE THE POWER SUPPLIES IN A CONCEALED ACCESSIBLE POSITION NOTED ON THE AS CONSTRUCTED DOCUMENTS. IT IS ACCEPTABLE TO SUPPLY MULTIPLE L10 SECTIONS FROM A SINGLE SUITABLY SIZED DRIVER | WHITE | NPA L-NF-GLOW-VWW + POWER SUPPLY & DALI CONTROLLER | A |
| L11 | 12W/M 2700K LED | FLEXIBLE LED ROPE FLEX SCREW FIXED RECESSED INTO THE JOINERY AS PER THE ARCHITECTURAL DETAIL. PROVIDE THE L11 STRIP WITH REMOTE DALI DIMMABLE POWER SUPPLIES AS REQUIRED LOCATE THE POWER SUPPLIES IN A CONCEALED ACCESSIBLE POSITION NOTED ON THE AS CONSTRUCTED DOCUMENTS. | WHITE | NPA L-NF-GLOW-VWW + POWER SUPPLY & DALI CONTROLLER | A |
| L12 | 880LM /M 3000K 24V LED | LED STRIP LIGHT IN A SCREW FIXED EXTRUSION C/W OPAL DIFFUSER MOUNTED IN THE ENTRY SEATING AREA CEILING PELMET AS PER THE ARCHITECTURAL DETAIL. PROVIDE EACH GROUP OF L12 STRIP WITH REMOTE DALI DIMMABLE POWER SUPPLIES AS REQUIRED LOCATE THE POWER SUPPLIES IN A CONCEALED ACCESSIBLE POSITION NOTED ON THE AS CONSTRUCTED DOCUMENTS. | NATURAL | MELEC ML-ALU-1407-2M - ML-VLCRI-14.4-WW | A |



ELECTRICAL DESIGN GROUP

ELECTRICAL BUILDING SERVICES CONSULTANTS

P.O. Box 15, SHERWOOD Q. 4075

Phone: (07) 3278 4375 Fax: (07) 3716 0222

Web Site: www.edg.net.au Email: brisbane@edg.net.au

C3556a - ROYAL HOTEL, BEENLEIGH

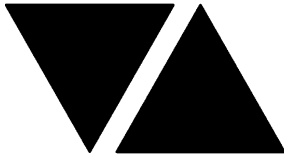
C3556a-0002(E).xls

ELECTRICAL EQUIPMENT SCHEDULE

REVISION E - 27 AUGUST 2025

THE LIGHT FITTING SUPPLIER CONTACT DETAILS MAY BE AVAILABLE ON THE EDG WEBSITE VIA THE FOLLOWING LINK
www.edg.net.au/Links/Lighting.htm

| TYPE | LAMPS | DESCRIPTION | COLOUR / ACCESSORY | CATALOGUE No | REV |
|------|---|--|--|---|-----|
| PD01 | TRAILING EDGE DIMMABLE 240 VOLT 2700K G9 LED 330 LUMENS +/- 10% 15,000 HOUR LIFE | 150MM DIA DECORATIVE PENDANT ALLOW TO ASSEMBLE AND INSTALL CONFIRM THE SUSPENSION HEIGHT ONSITE WITH THE ARCHITECT | BLACK WITH FROSTED GLOBE | BEACON LIGHTING CIRQUE 1 LIGHT 011440 | A |
| PD02 | NOT USED | | | | A |
| PD03 | TRAILING EDGE DIMMABLE 240 VOLT 2700K B22 FILAMENT LED 700 LUMENS +/- 10% 15,000 HOUR LIFE | DECORATIVE PENDANT ALLOW TO ASSEMBLE AND INSTALL CONFIRM THE SUSPENSION HEIGHT ONSITE WITH THE ARCHITECT | AGED SOLID BRASS | FAT SHACK VINTAGE FACTORY BATTEN LIGHT + BLACK CAGE GUARD C027-BRS- BLK | A |
| PD04 | PROVIDE SIX TRAILING EDGE DIMMABLE G9 240 VOLT 2700K 330 LUMENS +/- 10% 15,000 HOUR LIFE | SIX LAMP DECORATIVE PENDANT ALLOW TO ASSEMBLE AND INSTALL CONFIRM THE SUSPENSION HEIGHT ONSITE WITH THE ARCHITECT | BLACK BRASS FINISH OPAL RIPPLED 110 GLASS | ABOUT SPACE APENERA PENDANT | A |
| PD05 | INTEGRAL TRAILING EDGE DIMMABLE 2700K LED 1000 LUMENS / M | DECORATIVE PENDANT ALLOW TO ASSEMBLE AND INSTALL CONFIRM THE SUSPENSION HEIGHT ONSITE WITH THE ARCHITECT | BLACK | FAT SHACK VINTAGE INSTITUTE 1200 LP032-SML | A |
| PD06 | TRAILING EDGE DIMMABLE 240 VOLT 2700K B22 FILAMENT LED 700 LUMENS +/- 10% 15,000 HOUR LIFE | DECORATIVE PENDANT ALLOW TO ASSEMBLE AND INSTALL CONFIRM THE SUSPENSION HEIGHT ONSITE WITH THE ARCHITECT | AGED SOLID BRASS | FAT SHACK VINTAGE CONE 3 LIGHT GOOSENECK P015- 3GO-SML-CPR | A |
| WL01 | TRAILING EDGE DIMMABLE 240 VOLT 2700K B22 FILAMENT LED 700 LUMENS +/- 10% 15,000 HOUR LIFE | 250MM DIA DISK 150MM DIA SHADE WALL LIGHT MOUNTED LIGHT AS PER THE ARCHITECTURAL ELEVATION | LARGE BRASS DISK SMALL OPAL SHADE | FAT SHACK VINTAGE GLASS BALL DISC WALL LIGHT W233-BS- LRG-OPL-15 | A |
| WL02 | INTEGRAL 5W 3000K LED | 375 X 180 WALL LIGHT MOUNTED LIGHT AS PER THE ARCHITECTURAL ELEVATION | BRASS | ZEST LIGHTING ORSON ANTIQUE BRASS | A |
| WL03 | TRAILING EDGE DIMMABLE 240 VOLT 2700K E14 55DIA FILAMENT LED 700 LUMENS +/- 10% 15,000 HOUR LIFE | 80MM DIA 310MM HIGH WALL LIGHT MOUNTED LIGHT AS PER THE ARCHITECTURAL ELEVATION | BRASS | FAT SHACK VINTAGE TELLER GLASS ROD WALL LIGHT W728- GLD-CLR | A |



ELECTRICAL DESIGN GROUP

ELECTRICAL BUILDING SERVICES CONSULTANTS

P.O. Box 15, SHERWOOD Q. 4075

Phone: (07) 3278 4375 Fax: (07) 3716 0222

Web Site: www.edg.net.au Email: brisbane@edg.net.au

C3556a - ROYAL HOTEL, BEENLEIGH

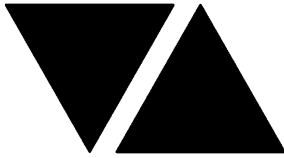
C3556a-0002(E).xls

ELECTRICAL EQUIPMENT SCHEDULE

REVISION E - 27 AUGUST 2025

THE LIGHT FITTING SUPPLIER CONTACT DETAILS MAY BE AVAILABLE ON THE EDG WEBSITE VIA THE FOLLOWING LINK
www.edg.net.au/Links/Lighting.htm

| TYPE | LAMPS | DESCRIPTION | COLOUR / ACCESSORY | CATALOGUE No | REV |
|------|--|--|----------------------------------|---|-----|
| WL04 | TRAILING EDGE DIMMABLE 240 VOLT 2700K B22 FILAMENT LED 700 LUMENS +/- 10% 15,000 HOUR LIFE | 25MM DIA 95MM HIGH WALL LIGHT MOUNTED LIGHT AS PER THE ARCHITECTURAL ELEVATION | SATIN BRASS ARM / BRASS SHADE | FAT SHACK VINTAGE CONE GOOSENECK OUTDOOR WALL LIGHT W323-SBS-BRS | A |
| WL05 | TRAILING EDGE DIMMABLE 240 VOLT 2700K B22 FILAMENT LED 700 LUMENS +/- 10% 15,000 HOUR LIFE | 150M DIA WALL LIGHT MOUNTED LIGHT AS PER THE ARCHITECTURAL ELEVATION | BRASS / OPAL SHADE | FAT SHACK VINTAGE GLASS BALL LIGHT W326-OPL-15 | A |
| WL06 | 450LUMEN 2700K LED | COLUMN MOUNTED UP / DOWN LIGHT C/W REMOTE DALI DIMMABLE POWER SUPPLY IT IS ACCEPTABLE TO USE A SUITABLY SIZED SINGLE POWER SUPPLY / DALI CONTROLLER TO SUPPLY MULTIPLE L8 FITTINGS ON THE SAME CHANNEL. LOCATE THE POWER SUPPLY AND DALI CONTROLLER IN A CONCEALED ACCESSIBLE POSITION WITH THE LOCATION NOTED ON THE AS CONSTRUCTED DOCUMENTS. | BLACK | NPA L-FX-SL-ARA- SP1303WM-12V-27K-D | B |
| SL01 | 13W 3000K LED | SURFACE MOUNTED DOWNLIGHT C/W INTEGRAL DALI DIMMABLE DRIVER ALLOW TO CHASE IN ALL CABLING AND CONDUITS | WHITE | EQUAL TO GAMMA ILLUMINATION SOLO 1412-3K-13W | A |
| SL02 | NOT USED | | | | A |
| SL03 | NOT USED | | | | A |
| SL04 | TRAILING EDGE DIMMABLE 240 VOLT 2700K E27 LED 400 LUMENS +/- 10% 15,000 HOUR LIFE | 135 DEEP SURFACE MOUNTED LIGHT | BLACK BASE OPAL MATT SHADE | FAT SHACK VINTAGE OSLO GLASS STEEL CEILING LIGHT W1067-BLK-SML-KIT | A |
| SL05 | TRAILING EDGE DIMMABLE 240 VOLT 2700K GU10 LED 300 LUMENS +/- 10% 15,000 HOUR LIFE | 100 DIA 150 DEEP SURFACE MOUNTED LIGHT | BLACK | BEACON LIGHTING MLF BY MASSON MILA GU10 177703 | A |
| RD01 | 13W 3000K LED | RECESSED DOWNLIGHT C/W REMOTE DALI DIMMABLE DRIVER | WHITE TRIM | GAMMA ILLUMINATION RHO 1001-3K-13W | A |
| RD02 | 13W 3000K LED | RECESSED ADJUSTABLE DOWNLIGHT C/W REMOTE DALI DIMMABLE DRIVER | WHITE TRIM | GAMMA ILLUMINATION KHO 1002-3K-13W | A |



ELECTRICAL DESIGN GROUP

ELECTRICAL BUILDING SERVICES CONSULTANTS

P.O. Box 15, SHERWOOD Q. 4075

Phone: (07) 3278 4375 Fax: (07) 3716 0222

Web Site: www.edg.net.au Email: brisbane@edg.net.au

C3556a - ROYAL HOTEL, BEENLEIGH

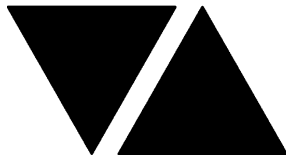
C3556a-0002(E).xls

ELECTRICAL EQUIPMENT SCHEDULE

REVISION E - 27 AUGUST 2025

THE LIGHT FITTING SUPPLIER CONTACT DETAILS MAY BE AVAILABLE ON THE EDG WEBSITE VIA THE FOLLOWING LINK
www.edg.net.au/Links/Lighting.htm

| TYPE | LAMPS | DESCRIPTION | COLOUR / ACCESSORY | CATALOGUE No | REV |
|------|--|--|---|--|-----|
| RD03 | 13W 3000K LED | RECESSED ADJUSTABLE DOWNLIGHT C/W REMOTE DALI DIMMABLE DRIVER | WHITE TRIM | EQUAL TO GAMMA ILLUMINATION SCOOP MINI G2 1496-FL-3K-13W | A |
| RD04 | 13W 3000K LED | RECESSED ADJUSTABLE DOWNLIGHT C/W REMOTE DALI DIMMABLE DRIVER | WHITE TRIM | EQUAL TO GAMMA ILLUMINATION MYLO 1004-FL-3K-13W | A |
| RD05 | 13W 3000K LED | RECESSED DOWNLIGHT C/W REMOTE DALI DIMMABLE DRIVER | BLACK TRIM | GAMMA ILLUMINATION RHO 1001-3K-13W | A |
| RD06 | 13W 3000K LED | RECESSED DOWNLIGHT C/W REMOTE DALI DIMMABLE DRIVER | WHITE TRIM | GAMMA ILLUMINATION RHO 1001-3K-13W | A |
| FS01 | 1W LED AT 500 CENTRES | FESTOON LIGHTING WITH 24V DC IP65 FESTOON LIGHTING TO BE FIXED TO A 316 STAINLESS STEEL WIRE SUPPORT SYSTEM. LOCATE THE DRIVER IN A CONCEALED ACCESSIBLE POSITION NOTED ON THE AS CONSTRUCTED DOCUMENTS. CONFIRM THE LENGTH AND POSITION ON SITE | BLACK CABLE AND FIXINGS 316 STAINLESS STEEL SUPPORT AND FIXINGS | FIRE FLY FFC-LS-50-24VE27-BK | A |
| TLE | EXISTING LINEAR TRACK AND ASSOCIATED FITTINGS TO BE RETAINED | | | | A |
| FDE | ALLOW A PC SUM OF \$500.00 PLUS GST FOR THE SUPPLY OF EACH FDE. ALLOW TO INSTALL | | | | A |
| UL01 | 5W 3000K LED | GARDEN ELV SPIKE LIGHT. PROVIDE EACH GROUP OF UL01 FITTINGS WITH A REMOTE COMMON DALI DIMMABLE DRIVER. LOCATE DRIVER /POWER SUPPLY IN A CONCEALED ACCESSIBLE POSITION NOTED ON THE AS CONSTRUCTED DOCUMENTS. | BLACK | GAMMA ILLUMINATION RULOJ 885102 | A |
| E1 | LED | EMERGENCY LIGHT: RECESSED NON-MAINTAINED EMERGENCY LIGHT. AS2293 CLASSIFICATION C0-D40 - C90-D40. | WHITE | CLEVERTRONICS LLIFE | A |
| E2 | LED | EMERGENCY LIGHT: RECESSED NON-MAINTAINED EMERGENCY LIGHT. AS2293 CLASSIFICATION C0-D40 - C90-D40. | BLACK | CLEVERTRONICS LLIFEBLK | A |
| EX | LED | EXIT LIGHT: MAINTAINED 24M VIEWING DISTANCE EXIT LIGHT C/W DIFFUSERS & DIRECTIONAL ARROWS AS SHOWN. CEILING SURFACE MOUNT OR WALL MOUNT BETWEEN 2100mm & 2700mm AFFL IF THERE IS NO VERTICAL SURFACE TO MOUNT THE FITTING ON WITHIN THIS RANGE CONFIRM THE MOUNTING HEIGHT WITH THE ENGINEER. AS2293 CLASSIFICATION C0-D1.25- C90-D2 | WHITE UNLESS NOTED AS BK THEN BLACK BODY | CLEVERTRONICS LUBPRO-SM | A |



ELECTRICAL DESIGN GROUP

ELECTRICAL BUILDING SERVICES CONSULTANTS

P.O. Box 15, SHERWOOD Q. 4075

Phone: (07) 3278 4375 Fax: (07) 3716 0222

Web Site: www.edg.net.au Email: brisbane@edg.net.au

C3556a - ROYAL HOTEL, BEENLEIGH

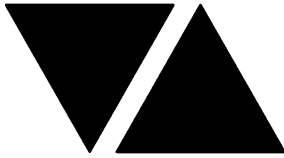
C3556a-0002(E).xls

ELECTRICAL EQUIPMENT SCHEDULE

REVISION E - 27 AUGUST 2025

THE LIGHT FITTING SUPPLIER CONTACT DETAILS MAY BE AVAILABLE ON THE EDG WEBSITE VIA THE FOLLOWING LINK
www.edg.net.au/Links/Lighting.htm

| TYPE | LAMPS | DESCRIPTION | COLOUR / ACCESSORY | CATALOGUE No | REV |
|-------------------------------------|-------------|---|----------------------------------|--------------------------------|-----|
| HEATER LAMP TYPE 1 (HL01) | | 250W PENDANT HEAT LAMP CONFIRM THE SUSPENSION HEIGHT ONSITE WITH THE ARCHITECT | GLOSSY GREY | HATCO DL-500-CL-CH/BK | A |
| HEATER LAMP TYPE 2 (HL02) | | TWO LAMP 900 LONG HEAT LAMP MOUNTED UNDER THE SHELF AS PER THE ARCHITECTURAL DETAIL | ALUMINIUM | ROBAND HQ900E | A |
| HEATER TYPE 1 (HR01) | | 2300W WALL MOUNTED HEATER C/W MOUNTING BRACKET AND REMOTE CONTROL LOCATED ADJACENT SP4 | BLACK | BROMIC PLATINUM SMART ELECTRIC | A |
| EXISTING HEATER (HRE) | | EXISTING HEATER TO BE RETAINED AND RECONNECTED WITH THE EXISTING CONTROL REINSTATED | | | A |
| FE | CEILING FAN | 132 DIA DC MOTOR CEILING FAN. PROVIDE THE FE WITH A DEDICATED WIRED CONTROLLER CONFIRM THE DROP ON SITE WITH THE ARCHITECT | BLACK | BIG ASS FANS HAIKU K3127 | C |
| FAN CONTROLLER TYPE 1 (FC1) | | FAN ON / OFF / SPEED CONTROLS. WALL MOUNTED AT 1000 AFFL | WHITE | TYPE TO MATCH THE FAN | A |
| CHANNEL x | | CONTROL CHANNEL WITH A NUMERICAL REFERENCE. REFER TO THE POWER AND LIGHTING CONTROL SCHEMATIC / SCHEDULE | | | A |
| ONE-WAY LIGHT SWITCH | | ONE-WAY LIGHT SWITCH C/W CIRCUIT IDENTIFICATION ON THE FACEPLATE BEHIND THE SURROUND MOUNTED AT 1000mm AFFL UNLESS NOTED OTHERWISE. | WHITE | CLIPSAL C2000 SERIES 30USM | A |
| TWO-WAY LIGHT SWITCH | | TWO-WAY LIGHT SWITCH C/W CIRCUIT IDENTIFICATION ON THE FACEPLATE BEHIND THE SURROUND MOUNTED AT 1000mm AFFL UNLESS NOTED OTHERWISE. | WHITE | CLIPSAL C2000 SERIES 30USM | A |
| LIGHTING CONTROL SWITCH PANEL (SPx) | | 6-BUTTON PROGRAMMABLE SWITCH PANEL C/W CENTRAL LCD DISPLAY MOUNTED AT 1000mm AFFL UNLESS NOTED OTHERWISE. | ALUMINIUM | DYNALITE ANTUMBRA DISPLAY | A |
| SINGLE POWER OUTLET | | SINGLE POWER OUTLET C/W CIRCUIT IDENTIFICATION ON THE FACEPLATE BEHIND THE SURROUND MOUNT AT 300mm AFFL U.N.O. RATING 10A U.N.O. | WHITE UNLESS NOTED AS BLACK (BK) | CLIPSAL C2000 SERIES | A |
| SINGLE POWER OUTLET AUTO DOOR (AD) | | SINGLE POWER OUTLET C/W CIRCUIT IDENTIFICATION ON THE FACEPLATE BEHIND THE SURROUND MOUNTED CONCEALED WITHIN THE AUTO DOOR MULLION. RATING 10A U.N.O. | WHITE | CLIPSAL C2000 SERIES | A |



ELECTRICAL DESIGN GROUP

ELECTRICAL BUILDING SERVICES CONSULTANTS

P.O. Box 15, SHERWOOD Q. 4075

Phone: (07) 3278 4375 Fax: (07) 3716 0222

Web Site: www.edg.net.au Email: brisbane@edg.net.au

C3556a - ROYAL HOTEL, BEENLEIGH

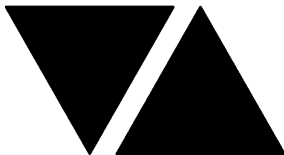
C3556a-0002(E).xls

ELECTRICAL EQUIPMENT SCHEDULE

REVISION E - 27 AUGUST 2025

THE LIGHT FITTING SUPPLIER CONTACT DETAILS MAY BE AVAILABLE ON THE EDG WEBSITE VIA THE FOLLOWING LINK
www.edg.net.au/Links/Lighting.htm

| TYPE | LAMPS | DESCRIPTION | COLOUR / ACCESSORY | CATALOGUE No | REV |
|--------------------------------|-------|---|----------------------------------|----------------------|-----|
| DOUBLE POWER OUTLET | | DOUBLE POWER OUTLET C/W CIRCUIT IDENTIFICATION ON THE FACEPLATE BEHIND THE SURROUND MOUNT AT 300mm AFFL U.N.O. RATING 10A U.N.O. | WHITE UNLESS NOTED AS BLACK (BK) | CLIPSAL C2000 SERIES | A |
| WEATHERPROOF POWER OUTLET (WP) | | IP54 WEATHERPROOF SINGLE / DOUBLE POWER OUTLET AS NOTED ON DRAWING C/W COVER FLAP OVER SOCKET. MOUNT AT MINIMUM 1100mm AFFL U.N.O. RATING 10A U.N.O. | - | CLIPSAL WSCF227F | A |
| SPECIAL PURPOSE OUTLET | | SPECIAL PURPOSE OUTLET TYPE AS NOTED. MOUNT AT 1350mm AFFL U.N.O. RATING 20A U.N.O. CONNECT TO EQUIPMENT VIA FLEXIBLE CONDUIT. | | | A |
| SIGN CONNECTION | | COORDINATE THE LOCATION AND CONNECTION WITH THE SIGN CONTRACTOR ENSURING THE GPO / ISOLATORS ARE PROVIDED WITH APPROPRIATE WEATHER PROTECTION AND ARE CONCEALED FROM VIEW. | | | A |
| SINGLE-PHASE ISOLATOR | | SINGLE-PHASE WEATHERPROOF ISOLATOR. MOUNT AT 1350mm AFFL U.N.O. RATING 20A U.N.O. CONNECT TO EQUIPMENT VIA FLEXIBLE CONDUIT. | - | CLIPSAL WHT20 | A |
| THREE-PHASE ISOLATOR | | THREE-PHASE WEATHERPROOF ISOLATOR. MOUNT AT 1350mm AFFL U.N.O. RATING 20A U.N.O. CONNECT TO EQUIPMENT VIA FLEXIBLE CONDUIT. | - | CLIPSAL WHT35 | A |
| GAMING TAB OUTLET | | GAMING / TAB OUTLETS PROVIDED BY THE GAMING ELECTRICIAN. REFER TO THE NOTES FOR ADDITIONAL DETAILS ON THE SCOPE. | | | C |
| GAMING ROOM JUNCTION BOX | | PROVIDE A SQUARE PLASTIC JUNCTION BOX CHASED INTO THE SLAB WITH THE TOP FLUSH WITH THE FLOOR. THE GAMING POWER CONDUITS ARE TO RUN TO A POWER JUNCTION BOX AND THE GAMING COMMUNICATIONS CONDUITS ARE TO RUN TO A COMMUNICATIONS JUNCTION BOX. LOCATE THE JUNCTION BOXES UNDER THE GAMING MACHINES. | | | A |
| DB-A | | DISTRIBUTION BOARD DB-A AS PER THE DB-A SCHEDULE AND NOTES. | | | E |
| DB-G | | EXISTING DISTRIBUTION BOARD AND ALL ASSOCIATED LOAD CENTRES / DIMMERS AND CONTROLS TO BE REMOVED. ANY EXISTING CIRCUITS THAT REMAIN ARE TO BE RESUPPLIED FROM THE NEW DB-A VIA NEW AS3000 COMPLIANT SWITCHGEAR WITH THE SAME CAPACITY AND CONTROL FUNCTION AS THE ORIGINAL | | | A |
| DB-T | | EXISTING DISTRIBUTION BOARD TO REMAIN REMOVE ALL EXISTING CIRCUITS AND ASSOCIATED CABLING THAT BECOMES REDUNDANT DUE TO THE PROPOSED WORKS. UPDATE THE EXISTING LABELLING AND SCHEDULE AT PRACTICAL COMPLETION SUCH THAT EACH CIRCUIT USE AND LOCATION CAN BE QUICKLY AND SIMPLY IDENTIFIED. PROVIDE THE MCCB CHASSIS WITH A NEW 160AMP MCCB TO SUPPLY DB-A. PROVIDE A 4C+E 70MM CU PVC/ XLPE SUBMAIN FROM THE NEW MCCB TO DB-A. UPDATE THE MCCB LABELLING AT PRACTICAL COMPLETION. | | | A |
| MSB | | EXISTING MAIN SWITCHBOARD TO REMAIN AS IS. | | | A |



ELECTRICAL DESIGN GROUP

ELECTRICAL BUILDING SERVICES CONSULTANTS

P.O. Box 15, SHERWOOD Q. 4075

Phone: (07) 3278 4375 Fax: (07) 3716 0222

Web Site: www.edg.net.au Email: brisbane@edg.net.au

C3556a - ROYAL HOTEL, BEENLEIGH

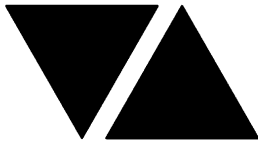
C3556a-0002(E).xls

ELECTRICAL EQUIPMENT SCHEDULE

REVISION E - 27 AUGUST 2025

THE LIGHT FITTING SUPPLIER CONTACT DETAILS MAY BE AVAILABLE ON THE EDG WEBSITE VIA THE FOLLOWING LINK
www.edg.net.au/Links/Lighting.htm

| TYPE | LAMPS | DESCRIPTION | COLOUR / ACCESSORY | CATALOGUE No | REV |
|-----------------------------|-------|---|--------------------|--------------|-----|
| FIRE INDICATOR PANEL (FIP) | | REPLACE THE EXISTING FIP WITH A CURRENT VERSION OF THE AS1670.1 COMPLIANT WHITE FIRE INDICATOR PANEL. RECONNECT ALL OF THE EXISTING DETECTORS AND SPEAKERS OUTSIDE OF THE WORKS AREA. | | | A |
| SMOKE DETECTOR | | AS1670.1 SURFACE MOUNTED SMOKE DETECTOR WHITE UNLESS NOTED AS BK THEN BLACK | | | A |
| RECESSED FIRE ALARM SPEAKER | | AS1670.1 RECESSED FIRE ALARM SPEAKER C/W GRILL WHITE UNLESS NOTED AS BK THEN BLACK | | | A |
| FIRE ALARM SYSTEM INTERFACE | | FIRE ALARM FAILSAFE INTERFACE TO UNLOCK THE DOOR UPON A FIRE ALARM | | | A |



ELECTRICAL DESIGN GROUP

ELECTRICAL BUILDING SERVICES CONSULTANTS

P.O. Box 15, SHERWOOD Q. 4075

Phone: (07) 3278 4375 Fax: (07) 3716 0222

Web Site: www.edg.net.au Email: brisbane@edg.net.au

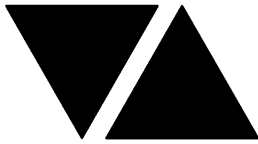
C3556a - ROYAL HOTEL, BEENLEIGH

C3556a-0004(C).xls

LIGHTING CONTROL SCHEDULE

REVISION C - 19 AUGUST 2025

| MISCELLANEOUS EQUIPMENT | | | | REV | |
|-------------------------|--|--|------------|------|---|
| ITEM | DESCRIPTION | | | A | |
| SP1 | AS DETAILED IN THE EQUIPMENT SCHEDULE 6-BUTTON PROGRAMMABLE SWITCH PANEL C/W CENTRAL LCD DISPLAY DYNALITE ANTUMBRA DISPLAY ALUMINIUM | | | A | |
| SP2 | AS DETAILED IN THE EQUIPMENT SCHEDULE 6-BUTTON PROGRAMMABLE SWITCH PANEL C/W CENTRAL LCD DISPLAY DYNALITE ANTUMBRA DISPLAY ALUMINIUM | | | A | |
| SP3 | AS DETAILED IN THE EQUIPMENT SCHEDULE 6-BUTTON PROGRAMMABLE SWITCH PANEL C/W CENTRAL LCD DISPLAY DYNALITE ANTUMBRA DISPLAY ALUMINIUM | | | A | |
| PE CELL | PROGRAMMABLE PE CELL DUS 90CS CONFIRM THE LOCATION ON SITE WITH THE ARCHITECT | | | A | |
| TIME CLOCK | PROGRAMMABLE TIME CLOCK ENVISION GATEWAY PDEG C/W INTERNET ACCESS LOCATE DB-B | | | A | |
| CONTROL MODULE 1 | | | | A | |
| TYPE: | | DYNALITE DDRC1220FR-GL | | A | |
| DESCRIPTION | | 12CH 20 A FEEDTHROUGH RELAY CONTROLLER | | A | |
| LOCATION | | DIN RAIL MOUNTED WITHIN DB-A | | A | |
| BUS: | | A | | A | |
| CHANNEL | CONTROL | DESCRIPTION | | | A |
| | | LOCATION | CIRCUIT | USE | A |
| A1 | SWITCHED | GAMING | DB-A - P18 | SIGN | A |
| A2 | SWITCHED | GAMING | DB-A - P19 | SIGN | A |
| A3 | SWITCHED | GAMING | DB-A - P20 | SIGN | A |
| A4 | SWITCHED | GAMING | DB-A - P21 | SIGN | A |
| A5 | SWITCHED | GAMING | DB-A - P22 | SIGN | A |
| A6 | SWITCHED | GAMING | DB-A - P23 | SIGN | A |
| A7 | SWITCHED | DOSA | DB-A - L1 | FDE | A |
| A8 | SWITCHED | EXTERNAL | DB-A - L1 | WL06 | A |
| A9 | | | | | A |
| A10 | | | | | A |
| A11 | | | | | A |
| A12 | | | | | A |



ELECTRICAL DESIGN GROUP

ELECTRICAL BUILDING SERVICES CONSULTANTS

P.O. Box 15, SHERWOOD Q. 4075

Phone: (07) 3278 4375 Fax: (07) 3716 0222

Web Site: www.edg.net.au Email: brisbane@edg.net.au

C3556a - ROYAL HOTEL, BEENLEIGH

C3556a-0004(C).xls

LIGHTING CONTROL SCHEDULE

REVISION C - 19 AUGUST 2025

| CONTROL MODULE 2 | | | | | A | |
|------------------|----------|--|-----------|------|---|--|
| TYPE: | | DYNALITE DDRC1220FR-GL | | A | | |
| DESCRIPTION | | 12CH 20 A FEEDTHROUGH RELAY CONTROLLER | | | A | |
| LOCATION | | DIN RAIL MOUNTED WITHIN DB-A | | | A | |
| BUS: | | A | | | A | |
| CHANNEL | CONTROL | DESCRIPTION | | | A | |
| | | LOCATION | CIRCUIT | USE | A | |
| A13 | SWITCHED | BISTRO | DB-A - L3 | TLE | A | |
| A14 | SWITCHED | BISTRO | DB-A - L3 | PD06 | A | |
| A15 | SWITCHED | BISTRO | DB-A - L3 | PD03 | A | |
| A16 | SWITCHED | BISTRO | DB-A - L3 | WL02 | A | |
| A17 | SWITCHED | KITCHEN | DB-A - L3 | WL04 | A | |
| A18 | SWITCHED | GAMING | DB-A - L3 | WL01 | A | |
| A19 | SWITCHED | BISTRO | DB-A - L3 | WL06 | A | |
| A20 | SWITCHED | DOSA | DB-A - L4 | FS01 | A | |
| A21 | SWITCHED | DOSA | DB-A - L1 | FS01 | B | |
| A22 | | | | | A | |
| A23 | | | | | A | |
| A24 | | | | | A | |
| CONTROL MODULE 3 | | | | | A | |
| TYPE: | | DYNALITE DDMC802 | | A | | |
| DESCRIPTION | | 8CH MODULAR CONTROLLER | | | A | |
| LOCATION | | DIN RAIL MOUNTED WITHIN DB-A | | | A | |
| BUS: | | A | | | A | |
| CHANNEL | CONTROL | DESCRIPTION | | | A | |
| | | LOCATION | CIRCUIT | USE | A | |
| A25 | DGTM202 | GAMING | DB-A -L2 | PD05 | A | |
| A26 | | GAMING | | PD01 | A | |
| A27 | DGTM202 | GAMING | | SL05 | A | |
| A28 | | GAMING | | PD04 | A | |
| A29 | DGTM202 | GAMING | | WL03 | A | |
| A30 | | GAMING | | WL05 | A | |
| A31 | DGTM202 | GAMING | | SL04 | B | |
| A32 | | | | | A | |
| CONTROL MODULE 4 | | | | | A | |
| TYPE: | | DYNALITE DDBC1200 | | A | | |
| DESCRIPTION | | 12CH BOARD CAST DALI CONTROLLER | | | A | |
| LOCATION | | DIN RAIL MOUNTED WITHIN DB-A | | | A | |
| BUS: | | A | | | A | |
| CHANNEL | CONTROL | DESCRIPTION | | | A | |
| | | LOCATION | CIRCUITS | USE | A | |
| A33 | DALI DIM | BISTRO | DB-A - L5 | UL01 | A | |
| A34 | DALI DIM | BISTRO | DB-A - L5 | L3 | A | |
| A35 | DALI DIM | BISTRO | DB-A - L5 | L3 | A | |
| A36 | DALI DIM | KITCHEN | DB-A - L5 | L9 | A | |
| A37 | DALI DIM | GAMING | DB-A - L5 | L10 | A | |
| A38 | DALI DIM | GAMING | DB-A - L5 | L8 | A | |
| A39 | DALI DIM | GAMING | DB-A - L6 | L1 | A | |
| A40 | DALI DIM | GAMING | DB-A - L7 | L1 | A | |
| A41 | DALI DIM | GAMING | DB-A - L8 | L2 | A | |
| A42 | DALI DIM | GAMING | DB-A - L8 | L7 | A | |
| A43 | DALI DIM | GAMING | DB-A - L8 | L11 | A | |
| A44 | DALI DIM | GAMING | DB-A - L8 | L7 | A | |



ELECTRICAL DESIGN GROUP

ELECTRICAL BUILDING SERVICES CONSULTANTS

P.O. Box 15, SHERWOOD Q. 4075

Phone: (07) 3278 4375 Fax: (07) 3716 0222

Web Site: www.edg.net.au Email: brisbane@edg.net.au

C3556a - ROYAL HOTEL, BEENLEIGH

C3556a-0004(C).xls

LIGHTING CONTROL SCHEDULE

REVISION C - 19 AUGUST 2025

| | | | | | |
|-------------------------|----------|---------------------------------|------------|-------------|---|
| CONTROL MODULE 5 | | | | | A |
| TYPE: | | DYNALITE DDBC1200 | | | A |
| DESCRIPTION | | 12CH BOARD CAST DALI CONTROLLER | | | A |
| LOCATION | | DIN RAIL MOUNTED WITHIN DB-A | | | A |
| BUS: | | A | | | A |
| CHANNEL | CONTROL | DESCRIPTION | | | A |
| | | LOCATION | CIRCUITS | USE | A |
| A45 | DALI DIM | GAMING | DB-A - L8 | L8 | A |
| A46 | DALI DIM | BISTRO | DB-A - L5 | L8 | A |
| A47 | DALI DIM | BISTRO | DB-A - L9 | L5 | A |
| A48 | DALI DIM | BISTRO | DB-A - L11 | RD01 | A |
| A49 | DALI DIM | BISTRO | DB-A - L9 | SL01 | A |
| A50 | DALI DIM | BISTRO | DB-A - L10 | RD01 | A |
| A51 | DALI DIM | BISTRO | DB-A - L9 | RD06 | A |
| A52 | DALI DIM | BISTRO | DB-A - L9 | RD01 | A |
| A53 | DALI DIM | BISTRO | DB-A - L11 | RD01 | A |
| A54 | DALI DIM | BISTRO | DB-A - L12 | RD04 | A |
| A55 | DALI DIM | BISTRO | DB-A - L13 | RD01 | |
| A56 | DALI DIM | BISTRO | DB-A - L13 | RD01 | A |
| CONTROL MODULE 6 | | | | | A |
| TYPE: | | DYNALITE DDBC1200 | | | A |
| DESCRIPTION | | 12CH BOARD CAST DALI CONTROLLER | | | A |
| LOCATION | | DIN RAIL MOUNTED WITHIN DB-A | | | A |
| BUS: | | A | | | A |
| CHANNEL | CONTROL | DESCRIPTION | | | A |
| | | LOCATION | CIRCUITS | USE | A |
| A57 | DALI DIM | BISTRO | DB-A - L14 | RD02 | A |
| A58 | DALI DIM | BISTRO | DB-A - L14 | RD01 | A |
| A59 | DALI DIM | GAMING | DB-A - L15 | RD01 | A |
| A60 | DALI DIM | FOYER | DB-A - L15 | RD01 & RD05 | A |
| A61 | DALI DIM | AMENITIES | DB-A - L15 | RD04 | A |
| A62 | DALI DIM | GAMING | DB-A - L8 | L3 | C |
| A63 | DALI DIM | GAMING | DB-A - L16 | L12 | A |
| A64 | DALI DIM | GAMING | DB-A - L16 | RD01 | A |
| A65 | DALI DIM | GAMING | DB-A - L16 | RD05 | A |
| A66 | DALI DIM | GAMING | DB-A - L17 | L4 | A |
| A67 | DALI DIM | GAMING | DB-A - L17 | RD02 | |
| A68 | DALI DIM | GAMING | DB-A - L17 | RD01 | A |
| CONTROL MODULE 7 | | | | | A |
| TYPE: | | DYNALITE DDBC1200 | | | A |
| DESCRIPTION | | 12CH BOARD CAST DALI CONTROLLER | | | A |
| LOCATION | | DIN RAIL MOUNTED WITHIN DB-A | | | A |
| BUS: | | A | | | A |
| CHANNEL | CONTROL | DESCRIPTION | | | A |
| | | LOCATION | CIRCUITS | USE | A |
| A69 | DALI DIM | GAMING | DB-A - L17 | L6 | A |
| A70 | DALI DIM | GAMING | DB-A - L18 | RD01 | A |
| A71 | DALI DIM | GAMING | DB-A - L18 | RD05 | A |
| A72 | DALI DIM | AIR LOCK | DB-A - L18 | RD01 | A |
| A73 | DALI DIM | ENTRY | DB-A - L19 | RD03 | A |
| A74 | DALI DIM | ENTRY | DB-A - L19 | L5 | A |
| A75 | DALI DIM | ENTRY | DB-A - L19 | L5 | A |
| A76 | DALI DIM | ENTRY | DB-A - L19 | RD03 | A |
| A77 | DALI DIM | DOSA | DB-A - L19 | RD03 | A |
| A78 | | | | | A |
| A79 | | | | | A |
| A80 | | | | | A |



ELECTRICAL DESIGN GROUP

ELECTRICAL BUILDING SERVICES CONSULTANTS

P.O. Box 15, SHERWOOD Q. 4075

Phone: (07) 3278 4375

Website: www.edg.net.au Email: brisbane@edg.net.au

C3556a - ROYAL HOTEL, BEENLEIGH

C3556a-0005(B).xls

DISTRIBUTION BOARD DB-A

REVISION B - 27 AUGUST 2025

| FAULT CURRENT: 6KA | | | | | | | MAIN SWITCH: 250 NON AUTO LOAD BREAK | REV |
|--|----|------------------------|-------------------|--------------------------------|----------|-------------|--------------------------------------|-----|
| CHASSIS SIZE: 96 POLE | | | | | | | SUPPLIED FROM: DB-T | A |
| CHASSIS RATING: 250A | | | | | | | SUPPLY CABLE: 4C+E 70 | B |
| PHASES: 3 | | | | | | | | A |
| PROVIDE THE DB WITH AN AS2293 EMERGENCY LIGHTING CONTROL SYSTEM TO CONTROL THE ASSOCIATED EMERGENCY LIGHTS. PROVIDE THE DB WITH SURGE PROTECTION. RECONNECT ALL OF THE EXISTING CIRCUITS THAT REMAIN AND THE CIRCUITS WITHIN THE AREA NOMINATED AS BEING SUPPLIED FROM DB-A TO THE NEW DB-A WITH NEW SWITCHGEAR AND CONTROLS THAT HAS THE SAME CAPACITY AND FUNCTION AS THE ORIGINAL. ENSURE THE SCHEDULE INCLUDES THE CIRCUIT USE AND LOCATION. | | | | | | | | B |
| CIRC | PH | CIRCUIT BREAKER (amps) | CONTROL EQUIPMENT | CABLE SIZE (mm ²) | LOCATION | CIRCUIT USE | | |
| P1 | | | | NO LONGER REQUIRED | | | B | |
| P2 | | | | NO LONGER REQUIRED | | | B | |
| P3 | | | | NO LONGER REQUIRED | | | B | |
| P4 | | | | NO LONGER REQUIRED | | | B | |
| P5 | | | | NO LONGER REQUIRED | | | B | |
| P6 | | | | NO LONGER REQUIRED | | | B | |
| P7 | | | | NO LONGER REQUIRED | | | B | |
| P8 | | | | NO LONGER REQUIRED | | | B | |
| P9 | | | | NO LONGER REQUIRED | | | B | |
| P10 | | | | NO LONGER REQUIRED | | | B | |
| P11 | | | | NO LONGER REQUIRED | | | B | |
| P12 | | | | NO LONGER REQUIRED | | | B | |
| P13 | | | | NO LONGER REQUIRED | | | B | |
| P14 | | | | NO LONGER REQUIRED | | | B | |
| P15 | 1 | 20 | RCBO | 2.5 | GAMING | CLEANING | A | |
| P16 | 1 | 20 | RCBO | 2.5 | AIR LOCK | AUTO DOOR | A | |
| P17 | 1 | 20 | RCBO | 2.5 | GAMING | CLEANING | A | |
| P18 | 1 | 20 | RCBO | 2.5 | GAMING | SIGN | A | |
| P19 | 1 | 20 | RCBO | 2.5 | GAMING | SIGN | A | |
| P20 | 1 | 20 | RCBO | 2.5 | GAMING | SIGN | A | |
| P21 | 1 | 20 | RCBO | 2.5 | GAMING | SIGN | A | |
| P22 | 1 | 20 | RCBO | 2.5 | GAMING | SIGN | A | |
| P23 | 1 | 20 | RCBO | 2.5 | GAMING | SIGN | A | |
| P24 | 1 | 20 | RCBO | 2.5 | GAMING | TV | A | |
| P25 | 1 | 20 | RCBO | 2.5 | BAR | TV | A | |
| P26 | 1 | 20 | RCBO | 2.5 | AIR LOCK | ATM | A | |
| | | | | | | | | |
| | | | | | | | | |
| | | | | | | | | |
| | | | | | | | | |
| | | | | | | | | |



ELECTRICAL DESIGN GROUP

ELECTRICAL BUILDING SERVICES CONSULTANTS

P.O. Box 15, SHERWOOD Q. 4075

Phone: (07) 3278 4375

Website: www.edg.net.au Email: brisbane@edg.net.au

C3556a - ROYAL HOTEL, BEENLEIGH

C3556a-0005(B).xls

DISTRIBUTION BOARD DB-A

REVISION B - 27 AUGUST 2025

| FAULT CURRENT: 6KA | | | | | | | MAIN SWITCH: 250 NON AUTO LOAD BREAK SUPPLIED FROM: DB-T SUPPLY CABLE: 4C+E 70 | REV |
|--|----|------------------------|-------------------|--------------------------------|-----------|-------------|--|-----|
| CHASSIS SIZE: 96 POLE | | | | | | | | A |
| CHASSIS RATING: 250A | | | | | | | | B |
| PHASES: 3 | | | | | | | | A |
| PROVIDE THE DB WITH AN AS2293 EMERGENCY LIGHTING CONTROL SYSTEM TO CONTROL THE ASSOCIATED EMERGENCY LIGHTS. PROVIDE THE DB WITH SURGE PROTECTION. RECONNECT ALL OF THE EXISTING CIRCUITS THAT REMAIN AND THE CIRCUITS WITHIN THE AREA NOMINATED AS BEING SUPPLIED FROM DB-A TO THE NEW DB-A WITH NEW SWITCHGEAR AND CONTROLS THAT HAS THE SAME CAPACITY AND FUNCTION AS THE ORIGINAL. ENSURE THE SCHEDULE INCLUDES THE CIRCUIT USE AND LOCATION. | | | | | | | B | |
| CIRC | PH | CIRCUIT BREAKER (amps) | CONTROL EQUIPMENT | CABLE SIZE (mm ²) | LOCATION | CIRCUIT USE | | |
| L1 | 1 | 20 | RCBO | 2.5 | EXTERNAL | LIGHTING | A | |
| L2 | 1 | 20 | RCBO | 2.5 | GAMING | LIGHTING | A | |
| L3 | 1 | 20 | RCBO | 2.5 | BISTRO | LIGHTING | A | |
| L4 | 1 | 20 | RCBO | 2.5 | DOSA | LIGHTING | A | |
| L5 | 1 | 20 | RCBO | 2.5 | BISTRO | LIGHTING | A | |
| L6 | 1 | 20 | RCBO | 2.5 | GAMING | LIGHTING | A | |
| L7 | 1 | 20 | RCBO | 2.5 | GAMING | LIGHTING | A | |
| L8 | 1 | 20 | RCBO | 2.5 | GAMING | LIGHTING | A | |
| L9 | 1 | 20 | RCBO | 2.5 | EXTERNAL | LIGHTING | A | |
| L10 | 1 | 20 | RCBO | 2.5 | BISTRO | LIGHTING | A | |
| L11 | 1 | 20 | RCBO | 2.5 | BISTRO | LIGHTING | A | |
| L12 | 1 | 20 | RCBO | 2.5 | AMENITIES | LIGHTING | A | |
| L13 | 1 | 20 | RCBO | 2.5 | BISTRO | LIGHTING | A | |
| L14 | 1 | 20 | RCBO | 2.5 | BISTRO | LIGHTING | A | |
| L15 | 1 | 20 | RCBO | 2.5 | AMENITIES | LIGHTING | A | |
| L16 | 1 | 20 | RCBO | 2.5 | GAMING | LIGHTING | A | |
| L17 | 1 | 20 | RCBO | 2.5 | GAMING | LIGHTING | A | |
| L18 | 1 | 20 | RCBO | 2.5 | GAMING | LIGHTING | A | |
| L19 | 1 | 20 | RCBO | 2.5 | DOSA | LIGHTING | A | |
| L20 | 1 | 20 | RCBO | 2.5 | GAMING | HEATERS | A | |
| L21 | 1 | 20 | RCBO | 2.5 | DOSA | HEATERS | A | |
| L22 | 1 | 20 | RCBO | 2.5 | DOSA | HEATERS | A | |
| L23 | 1 | 20 | RCBO | 2.5 | DOSA | FANS | A | |
| L24 | 1 | 20 | RCBO | 2.5 | BISTRO | HEAT LAMPS | A | |
| | | | | | | | | |
| | | | | | | | | |
| | | | | | | | | |
| | | | | | | | | |

LEGEND

- ELECTRICAL SERVICES SWITCHBOARD.
- SWITCHBOARD / CONTROL PANEL NOT PROVIDED AS PART OF THE ELECTRICAL SUBCONTRACT.
- SINGLE POWER OUTLET.
- DOUBLE POWER OUTLET.
- GAMING / TAB OUTLET BY GAMING ELECTRICIAN.
- EXIST EXISTING POWER OUTLET TO REMAIN AS NOTED.
- SIGNAGE CONNECTION.
- SINGLE PHASE ISOLATOR.
- THREE PHASE ISOLATOR.
- GAMING JUNCTION BOX.
- CONDUIT ROUTE.
- FAN CONTROL, TYPE x
- LIGHTING CONTROL SWITCHPANEL, TYPE x.
- ONE-WAY LIGHT SWITCH.
- TWO-WAY LIGHT SWITCH.
- CIRCUIT LINE.
- SWITCH LINE.

- POWER CIRCUIT DESIGNATION. DENOTES DB AND CIRCUIT.
- LIGHTING CONTROL CHANNEL REFERENCE.
- ELECTRICAL EQUIPMENT AS NOTED.
- REFER TO DETAIL NOTED FOR THE AREA SHOWN HATCHED. ADDITIONAL OUTLETS & FITTINGS MAY BE SHOWN ON DETAIL.
- FIRE INDICATOR PANEL.
- SMOKE DETECTOR.
- RECESSED FIRE ALARM SPEAKER.
- FIRE ALARM DOOR SYSTEM INTERFACE.
- FE: CEILING FAN
- HR01: WALL MOUNTED HEATER.
- HRE: EXISTING HEATER TO BE RETAINED.
- Lx: LED JOINERY / CEILING STRIP LIGHT, TYPE AS NOTED.
- E1: GENERAL RECESSED LED EMERGENCY LIGHT, WHITE.
- E2: GENERAL RECESSED LED EMERGENCY LIGHT, BLACK.
- EX: EMERGENCY LED EXIT LIGHT, WHITE UNLESS NOTED AS BLACK.

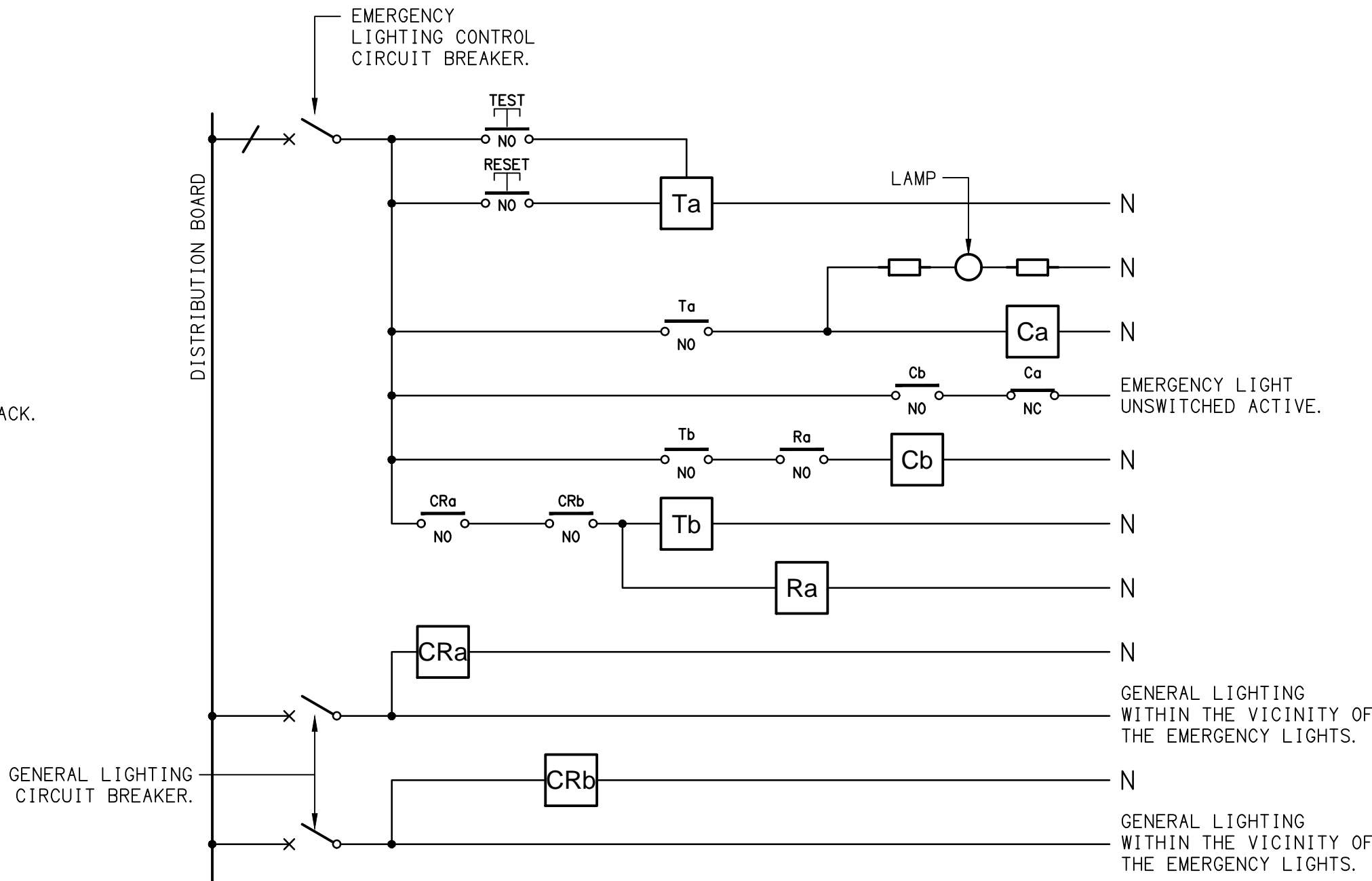
- PD01 PD01: DECORATIVE SUSPENDED PENDANT LIGHT.
- PD02 PD02: NOT USED.
- PD03 PD03: DECORATIVE SUSPENDED PENDANT LIGHT.
- PD04 PD04: DECORATIVE SUSPENDED PENDANT LIGHT.
- PD05: DECORATIVE SUSPENDED PENDANT LIGHT.
- PD06 PD06: DECORATIVE SUSPENDED PENDANT LIGHT.
- WL01 WL01: WALL LIGHT.
- WL02 WL02: WALL LIGHT.
- WL03 WL03: WALL LIGHT.
- WL04 WL04: WALL LIGHT.
- WL05 WL05: WALL LIGHT.

LEGEND

- SL01 SL01: SURFACE MOUNTED DOWNLIGHT.
- SL02 SL02: NOT USED.
- SL03 SL03: NOT USED.
- SL04 SL04: SURFACE MOUNTED LIGHT.
- SL05 SL05: SURFACE MOUNTED LIGHT.
- RD01 RD01: RECESSED DOWNLIGHT.
- RD02 RD02: RECESSED ADJUSTABLE DOWNLIGHT.
- RD03 RD03: RECESSED ADJUSTABLE DOWNLIGHT.
- RD04 RD04: RECESSED ADJUSTABLE DOWNLIGHT.
- RD05 RD05: RECESSED DOWNLIGHT.
- RD06 RD06: RECESSED DOWNLIGHT.
- TLE: EXISTING LINEAR TRACK AND FITTINGS RETAINED.
- FS01: FESTOON DECORATIVE LIGHTING.
- FDE FDE: LIGHT FITTING TYPE TO BE CONFIRMED.
- UL01 UL01: GARDEN SPIKE LIGHT.
- HL01 HL01: SUSPENDED PENDANT HEAT LAMP.
- HL02: 900 LONG LINEAR SHELF HEAT LAMP.

EQUIPMENT:

- TEST – TEST PUSH BUTTON MOUNTED ON THE DISTRIBUTION BOARD ESCUTCHEON.
- RESET – RESET PUSH BUTTON MOUNTED ON THE DISTRIBUTION BOARD ESCUTCHEON.
- LAMP – AMBER TEST INDICATING LAMP MOUNTED ON THE DISTRIBUTION BOARD ESCUTCHEON.
- Ta – ADJUSTABLE 0–3 HOUR TIMED RELAY.
- Tb – 15 MINUTE RUN-ON TIMER TO OPERATE UPON THE RETURN OF MAINS POWER.
- Cx – CONTACTOR x.
- CRx – CONTROL RELAY x.
- Rx – RELAY x.



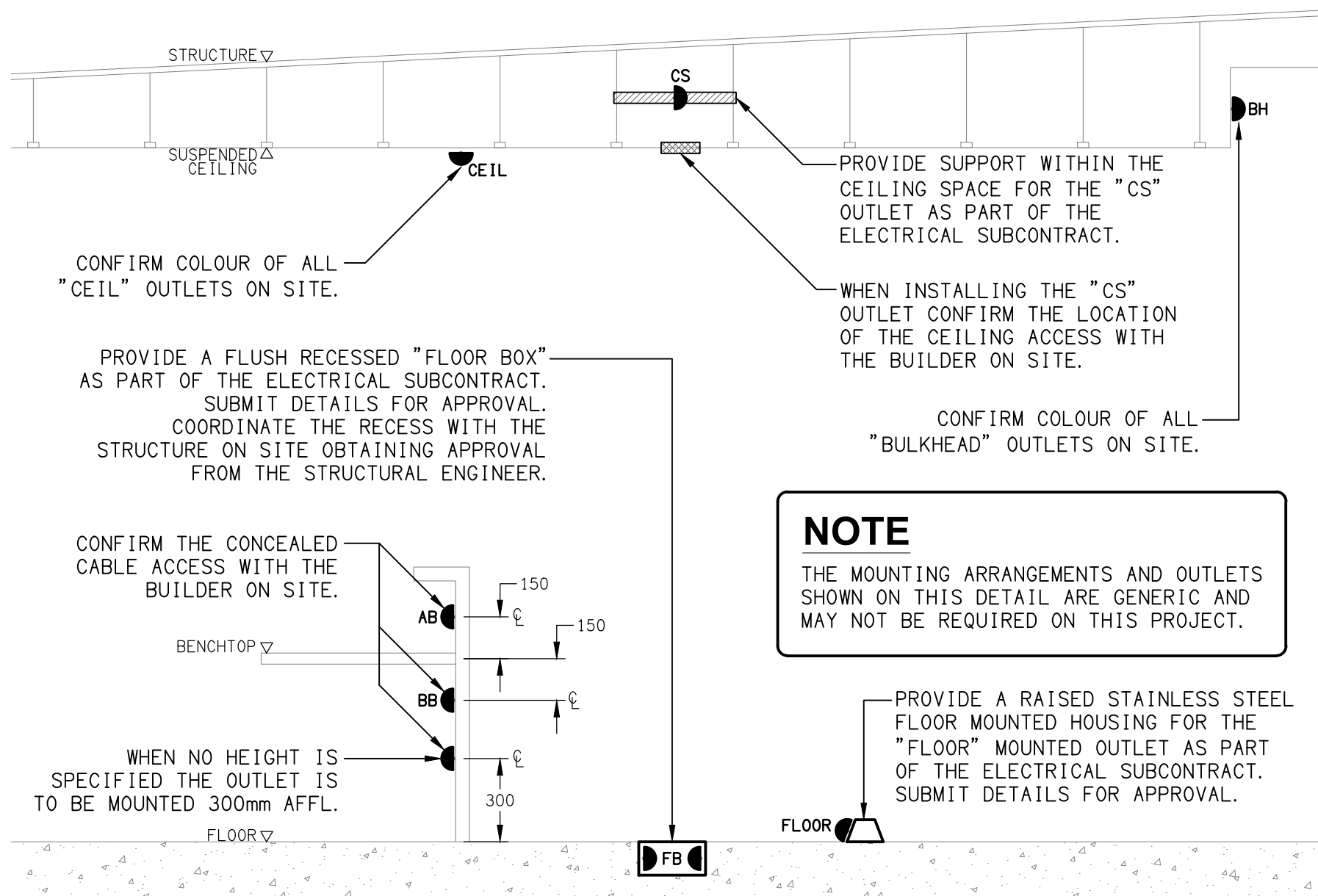
NOTES

- THE EMERGENCY LIGHT UNSWITCHED ACTIVE / GENERAL LIGHTING SWITCHED ACTIVE CIRCUIT ARRANGEMENT AND CONTROL IS TYPICAL FOR ALL CIRCUITS SUPPLYING EMERGENCY LIGHTS.
- PROVIDE ADDITIONAL CONTROL RELAYS (CRx) CONFIGURED AS PER CRa AND CRb FOR ALL ADDITIONAL LIGHTING CIRCUITS THAT SUPPLY LIGHTS IN THE VICINITY OF THE EMERGENCY LIGHTS.

SCHEMATIC

EMERGENCY LIGHTING
NOT TO SCALE

DETAIL NO LONGER REQUIRED



DETAIL

TYPICAL OUTLET MOUNTINGS
NOT TO SCALE

THE COPYRIGHT OF THIS DRAWING REMAINS THE PROPERTY OF THE ELECTRICAL DESIGN GROUP.

USE FIGURED DIMENSIONS IN PREFERENCE TO SCALE.

ALL DIMENSIONS TO BE VERIFIED ONSITE.

| | | |
|------|--------------|------------|
| B | CONSTRUCTION | 06/08/2025 |
| REV: | DESCRIPTION: | DATE: |

ELECTRICAL DESIGN GROUP
ELECTRICAL BUILDING SERVICES CONSULTANTS

BRISBANE: P.O. Box 15 Sherwood Qld 4075
Phone: (07) 3278 4375
Email: brisbane@edg.net.au
Web: www.edg.net.au

ELECTRICAL DESIGN GROUP BRISBANE PTY LTD
ACN 092 710 793

TRADING AS:
ELECTRICAL DESIGN GROUP

PROJECT:

ROYAL HOTEL, BEENLEIGH

SITE ADDRESS:

**85 GEORGE STREET, BEENLEIGH
QUEENSLAND**

SCALE: SHEET SIZE:

NOT TO SCALE AT **A1**

DRAWING TITLE:

**ELECTRICAL SERVICES
LEGEND & DETAILS**

PROJECT NO: DRAWING NO: REVISION:

C3556a E01 B

NOTES

1. EXTENT OF WORKS

THE ELECTRICAL SERVICES SUB-CONTRACT INCLUDES BUT IS NOT LIMITED TO THE FOLLOWING:

- SUPPLY AND INSTALLATION OF ALL COMPONENTS FORMING PART OF THE ELECTRICAL SERVICES.
- INSPECTIONS.
- TESTING AND COMMISSIONING.
- MAINTENANCE.
- CABLING, CABLE SUPPORT SYSTEMS AND ACCESS.
- POWER DISTRIBUTION.
- LIGHTING.
- FIRE ALARM SYSTEM.
- GAMING POWER AND COMMUNICATIONS CONDUITS CHASED INTO THE EXISTING SLAB.
- MODIFICATION, RELOCATION AND EXTENSION AS NECESSARY OF ALL EXISTING SERVICES THAT ARE IMPACTED BY THE WORKS OR REQUIRED TO BE EXTENDED BY THE WORKS.
- REMOVAL OF ALL EXISTING SERVICES MADE REDUNDANT BY THE WORKS.
- AS CONSTRUCTED DOCUMENTS.
- DOCUMENTS.
- ANY TEMPORARY WORKS REQUIRED TO KEEP THE HOTEL OPERATING DURING THE CONSTRUCTION PROCESS AND ACCOMMODATE STAGING OF THE WORKS TO REFLECT THE EXECUTION OF THE MAIN CONTRACT WORKS.
- ALL MINOR COMPONENTS AND INCIDENTAL WORKS NOT SPECIFICALLY REFERRED TO, HOWEVER NECESSARY TO COMPLETE THE ELECTRICAL SERVICES INSTALLATION SUCH THAT IT IS HANDED OVER COMPLETE, OPERATIONAL AND FIT FOR THE INTENDED USE.

UNDERTAKE THE WORKS IN STAGES REFLECTING THE MAIN CONTRACT.

PRIOR TO COMMENCING WORK CONSULT SITE MANAGEMENT FOR ANY HAZARDOUS MATERIAL AND OR ASBESTOS REGISTERS AS WELL AS UNDERTAKE A THOROUGH INSPECTION OF THE SITE TO IDENTIFY ANY POTENTIAL HAZARDOUS MATERIALS, ASBESTOS AND HEALTH OR SAFETY RISKS. ADVISE THE CONTRACTOR OF ANY POTENTIAL HAZARDOUS MATERIALS, ASBESTOS AND HEALTH OR SAFETY RISKS IF IDENTIFIED AND DO NOT COMMENCE WORK UNTIL AN APPROPRIATE MANAGEMENT PLAN HAS BEEN DEVELOPED AND AGREED TO BY ALL PARTIES.

SUPPLY ALL LABOUR, MATERIALS, EQUIPMENT, AND ALL OTHER ITEMS, WHETHER MENTIONED IN DETAIL OR NOT, REQUIRED FOR THE SATISFACTORY COMPLETION OF THE ELECTRICAL SERVICES INSTALLATION, LEAVING IN FULL WORKING ORDER TO THE SATISFACTION OF THE PROJECT MANAGER.

ACCEPT FULL RESPONSIBILITY FOR LIASING, ARRANGING AND CO-ORDINATION OF ALL WORKS THAT HAVE AN EFFECT ON OR WILL BE AFFECTED BY THE ELECTRICAL SERVICES.

REFER TO THE EQUIPMENT SCHEDULE FOR ADDITIONAL REQUIREMENTS.

2. WORKMANSHIP

ENSURE THAT THE ELECTRICAL WORK IS PERFORMED BY THE HOLDER OF A CURRENT ELECTRICAL SUB CONTRACTOR LICENSE AND THE SERVICES COVERED BY THE ACMA IS PERFORMED BY THE HOLDER OF THE APPROPRIATE CURRENT ACMA LICENSE. ENSURE THE INSTALLATION AND ALL COMPONENTS, FIXTURES, FITTINGS, OUTLETS AND CABLES ARE SUPPLIED AND INSTALLED TO A HIGH STANDARD THROUGHOUT, AND INSTALLED IN A NEAT AND TRADESMAN LIKE MANNER, TO THE CURRENT INDUSTRY STANDARDS. ENSURE ALL MATERIALS AND COMPONENTS OF A SIMILAR TYPE ARE OF THE SAME MANUFACTURER AND INSTALLED IN A UNIFORM MANNER.

IT IS THE ELECTRICAL SUB CONTRACTOR'S RESPONSIBILITY TO ENSURE THAT THE INSTALLATION IS FIT FOR PURPOSE AND IS PROVIDED AS A COMPLETE WORKING INSTALLATION. IT IS THE ELECTRICAL SUB CONTRACTOR'S RESPONSIBILITY TO PROVIDE ALL COMPONENTS, FITTINGS, FIXTURES, SYSTEMS, PROGRAMMING ETC IRRESPECTIVE OF THE LEVEL DETAILED IN THE DOCUMENTS SUCH THAT THE INSTALLATION IS PROVIDED AS A COMPLETE WORKING INSTALLATION.

CONCEAL ALL WIRING AND CONDUITS. EXPOSED CABLING OR CONDUITS ARE GENERALLY NOT ACCEPTABLE. IT IS NOTED THAT CHASING AND REINSTATEMENT WILL BE REQUIRED. ENSURE ALL COMPONENTS, EQUIPMENT AND MATERIALS SUPPLIED ARE NEW, UNUSED, DESIGNED AND SELECTED TO ENSURE SATISFACTORY OPERATION UNDER VARYING ATMOSPHERIC, CLIMATIC, HUMID TROPICAL CONDITIONS WITHOUT DISTORTION AND DETERIORATION IN ANY PART AFFECTING EFFICIENCY AND RELIABILITY OF THE SYSTEMS. DESIGN AND SELECT ALL EQUIPMENT TO PROVIDE THE NECESSARY SAFETY TO HUMAN LIFE AND PROPERTY DURING OPERATION AND MAINTENANCE WITH PARTICULAR ATTENTION GIVEN TO ELECTRICAL SAFETY AND SEGREGATION PRECAUTIONS.

CHECK THE FINISHED PAINTWORK AROUND THE AREA OF EACH INSTALLATION AND TOUCH UP ALL DAMAGED PARTS AND FINISHES AFTER THE INSTALLATION OF THE ELECTRICAL SERVICES.

ALL WORKS ARE TO BE CARRIED OUT IN ACCORDANCE WITH THE BUILDER'S PROGRAM. ENSURE ALL FINAL LOCATIONS OF OUTLETS AND FITTINGS ARE CO-ORDINATED ONSITE WITH THE ARCHITECT AND ALL OTHER SERVICES, TO THE APPROVAL OF THE PROJECT MANAGER. ALLOW TO CO-ORDINATE THE FINAL LOCATION OF ALL EQUIPMENT, FITTINGS, & OUTLETS, SUCH THAT THEY ARE INSTALLED IN ACCORDANCE WITH THE AS3000 RESTRICTED ZONES, AND ARE NOT COVERED INAPPROPRIATELY.

ENSURE THAT ALL METAL SURFACES ARE SUITABLY PROTECTED AGAINST CORROSION, AND THAT ALL PLASTIC MATERIALS ARE UV STABILISED.

PROVIDE ALL MATERIALS AS NEW, AND OF THE HIGHEST CLASS AVAILABLE FOR THEIR RESPECTIVE TYPES. ENSURE ALL ASPECTS OF THE WORK ARE OF A HIGH STANDARD THROUGHOUT, AND INSTALLED IN A NEAT AND TRADESMAN LIKE MANNER, TO THE CURRENT INDUSTRY STANDARDS.

MODIFICATION, RELOCATION AND EXTENSION AS NECESSARY OF ALL EXISTING SERVICES THAT ARE IMPACTED BY THE WORKS OR REQUIRED TO BE EXTENDED BY THE WORKS.

PROVIDE ALL TEMPORARY WORKS REQUIRED TO KEEP THE VENUE AND ALL CONSTRUCTION STAGES OPERATING INCLUDING STAGED COMMISSIONING DURING THE CONSTRUCTION PROCESS.

ALL MINOR COMPONENTS AND INCIDENTAL WORKS NOT SPECIFICALLY REFERRED TO, HOWEVER NECESSARY TO COMPLETE THE ELECTRICAL SERVICES INSTALLATION SUCH THAT IT IS HANDED OVER COMPLETE, OPERATIONAL AND FIT FOR THE INTENDED USE.

CORRUGATED CONDUITS MUST NOT BE USED WITHIN ANY FOOD OR DRINK PREPARATION OR SERVERY AREAS.

CABLE JOINS ARE NOT ACCEPTABLE. ALL CABLING, WIRING, CONDUCTORS AND CONDUITS MUST BE CONCEALED. ALL EXISTING ELECTRICAL SERVICES INCLUDING CABLING AND SWITCHGEAR THAT IS FOUND TO BE REDUNDANT OR MADE REDUNDANT BY THE WORKS MUST BE REMOVED.

IT IS ACCEPTABLE TO USE EXISTING SWITCHGEAR, OUTLETS AND CABLING IF THEY ARE APPROPRIATELY RATED AND THE ELECTRICIAN ACCEPTS RESPONSIBILITY OVER THE SWITCHGEAR / OUTLETS / CABLE AND PROVIDES A WARRANTY OVER IT AS IF IT WAS INSTALLED NEW BY THE ELECTRICIAN.

NOTES

3. STANDARDS

IRRESPECTIVE OF INFORMATION CONTAINED IN THE ELECTRICAL SERVICES DOCUMENTS OR IN INSTRUCTIONS, IT IS THE ELECTRICAL SUB CONTRACTOR'S RESPONSIBILITY TO ENSURE ALL ELECTRICAL SERVICES WORKS ARE INSTALLED IN ACCORDANCE WITH THE REQUIREMENTS OF THE FOLLOWING. REFER ANY DISCREPANCIES BETWEEN THE REQUIREMENTS OF THE FOLLOWING AND/OR THE ELECTRICAL SERVICES DOCUMENTS AND INSTRUCTIONS TO THE ARCHITECT FOR CLARIFICATION PRIOR TO THE PLACING OF ORDERS, FABRICATION OR INSTALLATION OF THE ITEMS/METHODS IN DISCREPANCY.

- NCC BUILDING CODE OF AUSTRALIA.
- ELECTRICITY ACT.
- ELECTRICAL SAFETY ACT.
- AS/NZS3000.
- AS3008.
- AS1670.1.
- WORKPLACE HEALTH AND SAFETY ACT.
- TELECOMMUNICATIONS ACT.
- ACMA REQUIREMENTS.

4. AUTHORITIES

ENSURE ALL OF THE ELECTRICAL SERVICES COMPLY WITH THE REQUIREMENTS OF ALL REGULATORY AUTHORITIES HAVING JURISDICTION OVER THE SITE INCLUDING BUT NOT LIMITED TO THE FOLLOWING:

- ACMA.
- LOCAL COUNCIL.
- LOCAL SUPPLY AUTHORITY.
- STATE GOVERNMENT DEPARTMENT OF ENVIRONMENT AND HERITAGE.
- QLD GOVERNMENT, DIVISION OF WORKPLACE, HEALTH AND SAFETY.
- QLD FIRE AND EMERGENCY SERVICES.

5. CABLES

UNLESS OTHERWISE SPECIFIED, INSTALL AND TERMINATE CABLES IN ACCORDANCE WITH THE MANUFACTURERS' RECOMMENDATIONS. DETERMINE THE FINAL ROUTES TO SUIT THE BUILDING STRUCTURE AND SITE CONDITIONS. UNLESS NOTED OTHERWISE, PROVIDE ALL 240 VOLT POWER AND LIGHTING WIRING AS 2.5mm² TWIN & EARTH STRANDED COPPER CONDUCTORS, PVC INSULATED 0.6/1kV V75 GRADE TO AS3174, PROTECTED BY A 20 AMP CIRCUIT BREAKER. ALL CONDUIT AND FITTINGS TO BE RIGID UPVC TO AS2053, UNLESS NOTED OTHERWISE.

6. POWER DISTRIBUTION

THE POWER DISTRIBUTION COMPONENT OF THIS CONTRACT INCLUDES:

- PROVIDING A NEW DISTRIBUTION BOARD DB-A. (GAMING)
- THE EXISTING DISTRIBUTION BOARD DB-G AND ALL ASSOCIATED LOAD CENTRES / DIMMERS AND CONTROLS TO BE REMOVED. ANY EXISTING CIRCUITS THAT REMAIN ARE TO BE RESUPPLIED FROM THE NEW DB-A VIA NEW AS3000 COMPLIANT SWITCHGEAR WITH THE SAME CAPACITY AND CONTROL FUNCTION AS THE ORIGINAL.
- REMOVE ALL EXISTING CIRCUITS AND ASSOCIATED CABLING FROM DB-T THAT BECOMES REDUNDANT DUE TO THE PROPOSED WORKS.
- PROVIDE THE DB-T MCCB CHASSIS WITH A NEW MCCB TO SUPPLY DB-A. PROVIDE A SUBMAIN FROM THE NEW MCCB TO DB-A. ALL OF THE EXISTING SWITCHBOARDS, CIRCUITS, CABLING AND OUTLETS THAT BECOME REDUNDANT ARE TO BE REMOVED.
- THE EXISTING CIRCUITS THAT REMAIN WITHIN THE AREA OF WORKS ARE TO BE RECONNECTED TO THE DB-A WITH NEW SWITCHGEAR AND CONTROLS.
- ANY INTERRUPTION TO THE POWER SUPPLY TO ANY SERVICES OUTSIDE OF THE AREA OF WORKS MUST BE RESTRICTED TO OUTSIDE OF THE HOTELS OPERATING HOURS AND MUST BE ADVISED TO THE OPERATOR IN WRITING AT LEAST ONE WEEK PRIOR.

ALL OF THE EXISTING SWITCHBOARDS, CIRCUITS, CABLING AND OUTLETS THAT BECOME REDUNDANT ARE TO BE REMOVED. THE EXISTING CIRCUITS THAT REMAIN WITHIN THE AREA OF WORKS ARE TO BE RECONNECTED TO THE SWITCHBOARDS WITH NEW SWITCHGEAR AND CONTROLS. ANY INTERRUPTION TO THE POWER SUPPLY TO ANY SERVICES OUTSIDE OF THE AREA OF WORKS MUST BE RESTRICTED TO OUTSIDE OF THE HOTELS OPERATING HOURS AND MUST BE ADVISED TO THE OPERATOR IN WRITING AT LEAST ONE WEEK PRIOR.

ALL SWITCHBOARDS AND SWITCHGEAR ARE TO BE SCHNEIDER OR NHP AND CONTAIN AT LEAST 25% OR 12 SPARE POLES (WHICHEVER IS THE LARGER) AT PRACTICAL COMPLETION. ALL SWITCHBOARDS ARE TO BE LIGHT GREY. ORANGE SWITCHBOARDS ARE NOT ACCEPTABLE. EXTERNAL SWITCHBOARDS MUST BE 316 STAINLESS STEEL OR ALUMINIUM. PROVIDE 92268 KEY LOCKABLE DOORS ON ALL SWITCHBOARDS. ALL SWITCHBOARDS AND CIRCUITS MUST BE UNIQUELY NAMED WITH SWITCHBOARDS PROVIDED WITH A LABEL CONTAINING:

- SOURCE NAME.
- SOURCE OVERLOAD RATING IN AMPS.
- SUBMAIN CABLE TYPE, SIZE, CONFIGURATION AND LENGTH.

ALL REMOVABLE PANELS AND ESCUTCHEONS MUST BE SECURED VIA 1/4 TURN LATCHES THAT REMAIN PART OF THE PANEL / ESCUTCHEON. IT IS NOT ACCEPTABLE TO SECURE REMOVABLE PANELS AND ESCUTCHEONS BY BOLTS, NUTS OR SCREWS.

ALL CIRCUIT BREAKERS AND CIRCUIT SCHEDULES MUST BE LABELLED / CONTAIN THE SUBMAIN / CIRCUIT USE AND LOCATION SUCH THAT THE CONNECTION / OUTLET CAN BE SIMPLY IDENTIFIED.

OUTLETS ARE TO BE PROVIDED WITH A NEAT HAND WRITTEN CIRCUIT DESIGNATION BY INDELIBLE INK ON THE FACEPLATE SUCH THAT IT IS NOT VISIBLE WHEN THE COVER IS CONCEALED.

THE POWER DISTRIBUTION COMPONENT OF THIS CONTRACT INCLUDES, BUT IS NOT LIMITED TO THE FOLLOWING EXTENT OF WORK:

- POWER DISTRIBUTION.
- NEW SWITCHBOARDS, SUBMAINS AND CIRCUIT BREAKERS.
- CABLE ACCESS WAYS.
- CIRCUITS.
- ISOLATORS AND OUTLETS.
- TESTING AND COMMISSIONING.
- REMOVAL OF ALL EXISTING REDUNDANT SERVICES.
- RECONNECTION OF ALL EXISTING SERVICES THAT REMAIN.

REFER TO THE DISTRIBUTION BOARD SCHEDULES FOR ADDITIONAL REQUIREMENTS AND CIRCUIT DETAILS.

PROVIDE DISTRIBUTION BOARD DB-A AS FOLLOWS:

- WALL MOUNTED.
- IP44 FORM 1.
- 3 POINT LOCKABLE HANDLES ON ALL DOORS.

- ALL SWITCHGEAR TO BE SCHNEIDER OR NHP/ TERASAKI.

- 25% SPARE POLES AT PRACTICAL COMPLETION.
- ALL COMPONENTS ARE TO BE LABELLED WITH NON-STICK LABELS.

ENSURE ALL THREE PHASE CIRCUITS ARE PROVIDED WITH CORRECT PHASE ROTATION.

ENSURE ALL OUTLETS AND ISOLATORS ARE POSITIONED SUCH THAT THEY ARE NOT COVERED BY THE EQUIPMENT. THE FINAL POSITION OF ALL OUTLETS AND ISOLATORS ARE TO BE CONFIRMED ON SITE BY THE TENANTS REPRESENTATIVE.

NOTES

7. LIGHTING

ALL FRONT OF HOUSE LIGHTING IS TO BE 2,700K OR 3,000K AND THE BACK OF HOUSE LIGHTING IS TO BE 4,000K.

UNLESS A FITTING HAS BEEN SPECIFIED IN THE EQUIPMENT SCHEDULE THAT CONTAINS A MAIN VOLTAGE LAMP, ALL LIGHT FITTINGS MUST BE PROVIDED AS SOLID-STATE LED WITH A FIVE-YEAR MANUFACTURERS REPLACEMENT WARRANTY AND A MINIMUM TWO YEAR MANUFACTURERS REPLACEMENT AND LABOUR WARRANTY.

ALL FRONT OF HOUSE LIGHTS THAT DO NOT CONTAIN A MAIN VOLTAGE LAMP ARE TO BE DALI DIMMABLE.

REMOTE DRIVERS ARE TO BE USED IF POSSIBLE AND LOCATED IN A CONCEALED ACCESSIBLE POSITION. IF THE DRIVER CAN NOT BE REACHED FROM THE FITTING ITS POSITION MUST BE NOTED ON THE AS CONSTRUCTED DOCUMENTS.

ALL FRONT OF HOUSE LIGHTS THAT CONTAIN MAIN VOLTAGE LAMPS ARE TO BE PROVIDED WITH THE LOWEST OUTPUT PRACTICAL TO ACHIEVE THE REQUIRED ILLUMINATION / EFFECT AND BE TRAILING EDGE PHASE DIMMABLE.

ALL ILLUMINATED SIGNAGE, GAMING BASE FOOTREST LEDS, CARPARK LIGHTS, AND EXTERNAL SECURITY LIGHTS NOT CONSIDERED FRONT OF HOUSE ARE TO BE SWITCHED.

ALL LIGHTING CIRCUITS MUST BE PROTECTED BY A 20 AMP RCBO WITH THE AVERAGE NUMBER OF FITTINGS / DRIVERS SUPPLIED FROM A SINGLE CIRCUIT NOT EXCEEDING 25 WITH THE MAXIMUM NOT EXCEEDING 30.

PROVIDE A PHILIPS DYNALITE LIGHTING CONTROL SYSTEM TO CONTROL THE LIGHTING CONFIGURED WITH THE FOLLOWING SCENES:

INTERNAL

- CLEANING - MANUAL OPERATION. 100% LIGHTS ON AND SIGNS OFF.
- DAY - AUTOMATIC OPERATION FROM 10.00 AM TO 3.30 PM.
- AFTERNOON - AUTOMATIC OPERATION FROM 3.30 PM TO DUSK.
- EVENING - AUTOMATIC OPERATION FROM DUSK TO 8.30 PM.
- NIGHT - AUTOMATIC OPERATION FROM 8.30 PM TO CLOSING.
- CLOSED - MANUAL OPERATION. 100% ON FOR 15 MINUTES THEN TO A SECURITY MODE.

EXTERNAL

- DAY - AUTOMATICALLY OFF FROM DAWN TO DUSK.
- NIGHT - AUTOMATICALLY ON FROM DUST UNTIL 15 MINUTES PAST CLOSING.
- CLOSED - MANUAL OPERATION. NIGHT MODE FOR 15 MINUTES THEN TO A SECURITY MODE.

SET THE ILLUMINATION LEVELS IN CONSULTATION WITH THE VENUE MANAGER AND OBTAIN WRITTEN APPROVAL FROM THE VENUE MANAGER OF THEIR ACCEPTANCE OF THE ILLUMINATION SCENE LEVELS FOR EACH STAGED HANDOVER AND SUBMIT A COPY OF THE APPROVAL TO THE ARCHITECT.

PROVIDE PHILIPS DYNALITE PROGRAMMABLE SWITCH PANELS PE SENSORS AND TIME CLOCKS AS NECESSARY. EACH FUNCTIONAL AREA IS TO BE PROVIDED WITH A SWITCHPANEL IN A NON-CUSTOMER ACCESSIBLE POSITION WITH THE ABILITY TO MANUALLY INSTIGATE THE ABOVE SCENES.

DIN RAIL MOUNT THE PHILIPS DYNALITE CONTROL EQUIPMENT WITHIN THE ASSOCIATED SWITCHBOARD.

ALL OF THE LIGHT FITTINGS, LAMPS AND ACCESSORIES ARE TO BE PROVIDED AS PART OF THIS CONTRACT. THE LIGHTING COMPONENT OF THIS CONTRACT INCLUDES, BUT IS NOT LIMITED TO THE FOLLOWING EXTENT OF WORK:

- LIGHTING.
- LIGHT FITTINGS AND ACCESSORIES.
- EMERGENCY AND EXIT LIGHTING.
- EARTHING OF THE LIGHTING INSTALLATION.
- LIGHTING CONTROL.
- PHILIPS DYNALITE LIGHTING CONTROL SYSTEM.
- LIGHTING SUBCIRCUITS.
- TESTING AND COMMISSIONING.
- RECONNECTION OF THE EXISTING LIGHTING THAT REMAINS.
- REMOVAL OF ALL EXISTING REDUNDANT LIGHTING SERVICES INCLUDING THE REDUNDANT LIGHTING CONTROL SYSTEM.

COMMISSION THE LIGHTING CONTROL AT PRACTICAL COMPLETION AND AGAIN THREE TIMES DURING THE DEFECTS AND LIABILITY PERIOD TO THE SATISFACTION OF THE OPERATOR.

DALI TO PHASE DIMMING CONVERTERS ARE NOT ACCEPTABLE.

8. DOCUMENTATION

WITHIN TWO WEEKS OF PRACTICAL COMPLETION PROVIDE THE FOLLOWING DOCUMENTATION.

AS CONSTRUCTED DRAWINGS INCLUDING:

- ELECTRICIANS NAME AND CONTACT DETAILS.
- PROJECT NAME, ADDRESS AND DATE OF PRACTICAL COMPLETION.
- FITTING POSITIONS AND TYPES CROSS REFERENCED TO A FITTING / EQUIPMENT SCHEDULE.
- OUTLET, SWITCH, AND CONNECTION POSITIONS CROSS REFERENCED TO A FITTING / EQUIPMENT SCHEDULE.
- REMOTE DRIVER LOCATIONS.
- CIRCUITS CROSS REFERENCED TO A DISTRIBUTION BOARD SCHEDULE.
- LIGHTING CONTROL CHANNELS CROSS REFERENCED TO A LIGHTING CONTROL SCHEDULE.
- POWER SCHEMATIC.
- SWITCHBOARD SHOP DRAWINGS.
- CABLE ACCESS ROUTES.

A FITTING / EQUIPMENT SCHEDULE INCLUDING.

- FITTING DETAILS INCLUDING THE MANUFACTURERS CATALOGUE NUMBERS WITH THE TYPES CROSS REFERENCED TO THE AS CONSTRUCTED DRAWINGS.
- OUTLETS AND SWITCHES INCLUDING THE MANUFACTURERS CATALOGUE NUMBERS WITH THE TYPES CROSS REFERENCED TO THE AS CONSTRUCTED DRAWINGS.

DISTRIBUTION BOARD SCHEDULES CROSS REFERENCED TO THE AS CONSTRUCTED DRAWINGS.

LIGHTING CONTROL SCHEDULE CROSS REFERENCED TO THE AS CONSTRUCTED DRAWINGS.

PHOTOS OF EACH SWITCHBOARD INCLUDING:

- CLOSED POSITION SUCH THAT THE SWITCHBOARD DESIGNATION AND CLEARANCE IS VISIBLE.
- THE SUBMAIN LABEL.
- DOOR/S OPEN ESCUTCHEON/S CLOSED SUCH THAT THE SPARE CAPACITY AND LABELLING IS VISIBLE.
- DOOR/S OPEN ESCUTCHEON/S REMOVED SUCH THAT THE SWITCHGEAR AND INTERNAL CABLING IS VISIBLE.

NOTES

9. EMERGENCY AND EXIT LIGHTING

PROVIDE A SINGLE POINT EMERGENCY LIGHTING SYSTEM THAT COMPLIES WITH THE LATEST ISSUE OF ALL PARTS AS2293 AND THE RELEVANT PARTS OF THE NCC BCA. INSTALL EMERGENCY LIGHT FITTINGS NOMINATED AS MAINTAINED WITH THE LAMP PERMANENTLY ON SUPPLIED VIA AN UNSWITCHED ACTIVE MAINS SUPPLY WHEN THE MAINS SUPPLY IS AVAILABLE. WHEN THE MAINS SUPPLY IS NOT AVAILABLE, THE LAMP IS TO REMAIN ON SUPPLIED BY THE EMERGENCY PACK. SINGLE LAMP MAINTAINED EMERGENCY LIGHTS ARE NOT SWITCHED WITH THE LOCAL GENERAL AREA LIGHTING. (THE LAMP IS ALWAYS ON.)

INSTALL EMERGENCY LIGHT FITTINGS NOMINATED AS NON-MAINTAINED AS FOLLOWS:

- IF THE FITTING IS NOT BEING SWITCHED, THE LAMP IS TO REMAIN OFF WHEN THE MAINS SUPPLY IS AVAILABLE. WHEN THE MAINS SUPPLY IS NOT AVAILABLE THE LAMP IS TO BE SWITCHED ON SUPPLIED BY THE EMERGENCY PACK. UNSWITCHED SINGLE LAMP NON-MAINTAINED EMERGENCY LIGHTS ARE NOT SWITCHED WITH THE LOCAL GENERAL AREA LIGHTING. (THE LAMP IS ON ONLY WHEN THE MAINS SUPPLY IS NOT AVAILABLE.)
- IF THE FITTING IS BEING SWITCHED, THE LAMP IS TO BE SUPPLIED AND CONTROLLED WITH THE LOCAL GENERAL AREA LIGHTING WHEN THE MAINS SUPPLY IS AVAILABLE. WHEN THE MAINS SUPPLY IS NOT AVAILABLE THE LAMP IS TO BE SWITCHED ON, SUPPLIED BY THE EMERGENCY PACK. (THE LAMP IS ON WHEN TURNED ON WITH THE LOCAL GENERAL LIGHTING OR THE MAIN SUPPLY IS NOT AVAILABLE.)

INSTALL EMERGENCY LIGHTS SUCH THAT THE STATUS INDICATOR L.E.D. IS CLEARLY VISIBLE AND THE TEST BUTTONS ARE READILY ACCESSIBLE. LABEL EACH CIRCUIT BREAKER WHICH CONTROLS THE UNSWITCHED ACTIVE TO EXIT LIGHTS WITH A LABEL FIXED ADJACENT; ENGRAVED PLASTIC LAMINATE, GREEN BACKGROUND WITH WHITE CHARACTERS: -

WARNING
INTERRUPTING SUPPLY WILL DISCHARGE
EMERGENCY LIGHTING BATTERIES

PROVIDE WRITTEN EVIDENCE OF THE INITIAL COMMISSIONING AND TESTING AND TESTING FOR THE DURATION OF THE MAINTENANCE PERIOD IN ACCORDANCE WITH AS 2293.2.

THIS EVIDENCE IS TO BE IN THE FORM OF A LOG BOOK SIMILAR TO THE GENERAL LIGHTING SERVICE PTY LTD "EMERGENCY LIGHTING MAINTENANCE LOG BOOK AND MANUAL" WHICH IS TO BE PROVIDED BY THE ELECTRICAL SUB-CONTRACTOR AND HAVE ALL ENTRIES FULLY COMPLETED AND BE PRESENTED FOR INSPECTION AT PRACTICAL COMPLETION. THE LOG BOOK IS TO BE RETAINED BY THE ELECTRICAL SUB-CONTRACTOR FOR THE DURATION OF THE MAINTENANCE PERIOD, AND THE SIX MONTHLY TEST AND MAINTENANCE RESULTS ENTERED. THE LOG BOOK IS TO BE PRESENTED FOR APPROVAL AT FINAL COMPLETION (EXPIRY OF THE MAINTENANCE PERIOD) AND WILL BE FORWARDED TO THE OPERATOR FOR THEIR USE.

PROVIDE MAINTENANCE OF THE EMERGENCY AND EXIT LIGHTING INSTALLATION INCLUDING RECORDS IN ACCORDANCE WITH THE LATEST ISSUE OF ALL PARTS AS2293 AND THE RELEVANT PARTS OF THE NCC BCA. PROVIDE THE EMERGENCY LIGHTING SYSTEM WITH A SUPPLY SENSING AND TESTING FACILITY IN ACCORDANCE WITH AS 2293.1.

10. GAMING

THE GAMING ELECTRICIAN WILL BE ENGAGED DIRECTLY BY ENDEAVOUR GROUP TO UNDERTAKE THE FOLLOWING:

- COMMUNICATIONS CABLING.
- CIRCUITS FROM GAMING DISTRIBUTION BOARD DB-2 VIA THE LIGHTING CONTROL SYSTEM AS NECESSARY TO:
- GAMING MACHINES.
- GAMING MODEMS.
- GAMING MACHINE SIGNAGE.
- GAMING ROOM CRIS.
- GAMING ROOM CABLE ACCESS EXCLUDING FLOOR CHASES AND REINSTATEMENT OF THE FLOOR CHASES.

THE BUILDING WORKS ELECTRICAL SUB CONTRACT INCLUDES THE DISTRIBUTION BOARD DB-G SWITCHGEAR AS DETAILED IN THE DB-G SCHEDULE AND LIGHTING CONTROL CHANNELS AS DETAILED IN THE LIGHTING CONTROL SCHEDULE FOR THE GAMING ELECTRICIAN TO USE.

ALL OTHER REMAINING ELECTRICAL SERVICES WITHIN THE GAMING ROOM ARE TO BE PROVIDED AS PART OF THE BUILDING WORKS ELECTRICAL SUB CONTRACT.

11. FIRE ALARM SYSTEM.

THE FIRE ALARM SYSTEM COMPONENT OF THIS CONTRACT INCLUDES THE REPLACEMENT OF THE ENTIRE EXISTING FIRE ALARM SYSTEM THROUGHOUT THE RENOVATED AREAS INCLUDES REPLACING THE EXISTING FIP IF REQUIRED TO COMPLY WITH AS1670.1. THE EXISTING DETECTION AND SPEAKERS OUTSIDE OF THE RENOVATED AREAS ARE TO BE RECONNECTED AND REPLACED WITH NEW IF THEY ARE NOT COMPATIBLE WITH THE NEW FIRE ALARM SYSTEM. THE NEW FIRE ALARM SYSTEM IS TO BE PROVIDED AS AN AS1670.1 COMPLIANT ADDRESSABLE SYSTEM. THE FIRE ALARM SYSTEM COMPONENT OF THIS CONTRACT INCLUDES, BUT IS NOT LIMITED TO THE FOLLOWING EXTENT OF WORK:

- REPLACING THE FIRE INDICATOR PANEL INCORPORATING AN FDCIE AND EWCIE IF REQUIRED TO COMPLY WITH AS1670.1.
- HORNS AND SPEAKERS.
- VISUAL ALARM DEVICE IF THE EXISTING IS DAMAGED OR NOT COMPATIBLE WITH THE NEW SYSTEM.
- LIFT SHAFT ASPIRATING SMOKE DETECTION.
- SMOKE DETECTORS.
- THERMAL DETECTORS.
- CONCEALED SPACE DETECTORS.
- CONCEALED SPACE DETECTOR ACCESS.
- REPLACE THE EXISTING DETECTORS AND SPEAKERS IF THE EXISTING IS DAMAGED OR NOT COMPATIBLE WITH THE NEW SYSTEM.
- WALL MOUNTED ENGRAVED ZONE PLAN ADJACENT THE FIP.
- CABLING.
- INTERFACE TO THE KITCHEN GAS CONTROL SYSTEMS.
- INTERFACE TO THE SECURITY SYSTEM.
- INTERFACE TO THE AUDIO SYSTEM.
- CABLE ACCESS WAYS.
- TESTING AND COMMISSIONING.

ANY INTERRUPTION TO THE EXISTING FIRE ALARM SYSTEM MUST BE RESTRICTED BETWEEN 9.00AM AND 4.00PM MONDAY TO FRIDAY AND MUST BE ADVISED TO THE OPERATOR IN WRITING AT LEAST ONE WEEK PRIOR.

12. ABBREVIATIONS

- A - AMP CURRENT RATING
- AB - MOUNT ABOVE BENCH.
- AFFL - ABOVE FINISHED FLOOR LEVEL.
- BB - MOUNT BELOW BENCH.
- BH - MOUNT ON BULKHEAD.
- CEIL - MOUNT ON CEILING.
- CS - MOUNT WITHIN CEILING SPACE.
- C/W - COMPLETE WITH.
- DW - DISHWASHER.
- HP - HOT PLATE.
- HWS - HOT WATER SYSTEM.
- MCB - MINIATURE CIRCUIT BREAKER.
- MSB - MAIN SWITCHBOARD.
- MSSB - MECHANICAL SERVICES SWITCHBOARD.
- MW - MICROWAVE.
- N - NEON / LED INDICATOR WHEN ON.
- NTS - NOT TO SCALE.
- OV - OVEN.
- QDC - QUEENSLAND DEVELOPMENT CODE.
- RCBO - CIRCUIT BREAKER C/W AN INTEGRAL 30mA RESIDUAL CURRENT DEVICE.
- RCD - CIRCUIT PROTECTED VIA A 30mA RESIDUAL CURRENT DEVICE.
- REF - REFRIGERATOR.
- UNO - UNLESS NOTED OTHERWISE.
- WP - WEATHERPROOF TO IP56 UNO.
- 500 - NUMBER DENOTES MOUNTING HEIGHT AFFL.

| | | |
|--|--|--|
| THE COPYRIGHT OF THIS DRAWING REMAINS THE PROPERTY OF THE ELECTRICAL DESIGN GROUP. | | |
| USE FIGURED DIMENSIONS IN PREFERENCE TO SCALE. | | |
| ALL DIMENSIONS TO BE VERIFIED ONSITE. | | |

| | | |
|------|--------------|------------|
| C | CONSTRUCTION | 27/08/2025 |
| REV: | DESCRIPTION: | DATE: |

ELECTRICAL DESIGN GROUP
ELECTRICAL BUILDING SERVICES CONSULTANTS

BRISBANE: P.O. Box 15 Sherwood Qld 4075
Phone: (07) 3278 4375
Email: brisbane@edg.net.au
Web: www.edg.net.au

ELECTRICAL DESIGN GROUP BRISBANE
PTY LTD
ACN 092 710 793

TRADING AS:
ELECTRICAL DESIGN
GROUP

PROJECT:

ROYAL HOTEL, BEENLEIGH

SITE ADDRESS:

85 GEORGE STREET, BEENLEIGH
QUEENSLAND

SCALE: SHEET SIZE:

NOT TO SCALE AT A1

DRAWING TITLE:

ELECTRICAL SERVICES
NOTES

PROJECT NO: DRAWING NO: REVISION:

C3556a E02 C



— ☒ PROVIDE CHASE GAMING JUNCTION BOX WITH (2 P50) AND (2 C50)
CONDUITS PER CONDUIT ROUTE SHOWN ON THIS PLAN.

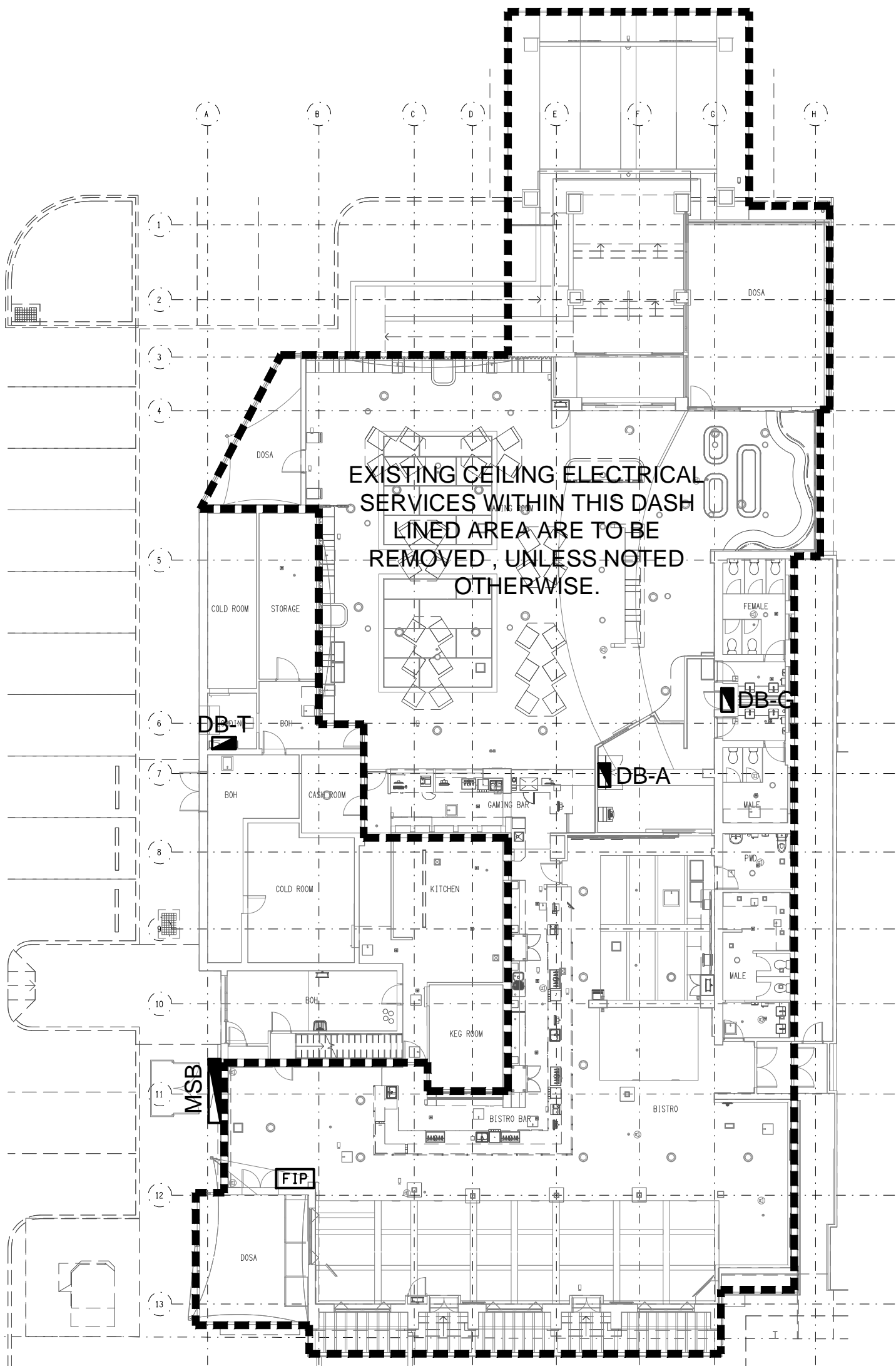
ALL DIMENSIONS TO BE VERIFIED ONSITE.

—EXISTING ELECTRICAL SERVICES
ASSOCIATED WITH THE EXISTING
DOOR TO REMAIN.

— PROVIDE CHASE IN
CONDUITS TO SERVICE
THE PLANTER.

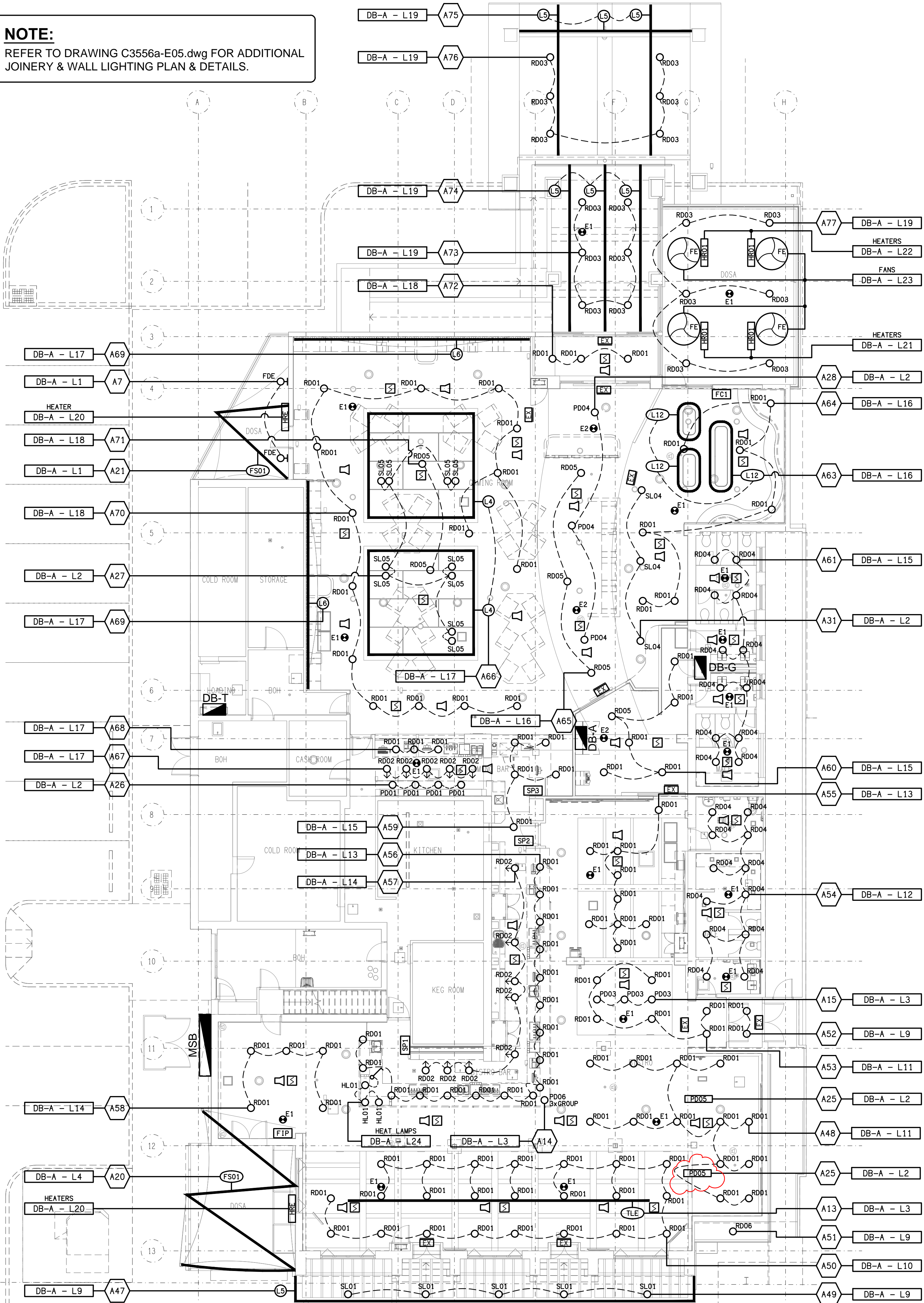


| C3556a | E03 | F |
|--------|-----|---|
|--------|-----|---|



OVERALL CEILING PLAN
EXTENT OF WORKS
SCALE 1:200

NOTE:
REFER TO DRAWING C3556a-E05.dwg FOR ADDITIONAL
JOINERY & WALL LIGHTING PLAN & DETAILS.



THE COPYRIGHT OF THIS DRAWING REMAINS THE PROPERTY OF
THE ELECTRICAL DESIGN GROUP.

USE FIGURED DIMENSIONS IN PREFERENCE TO SCALE.

ALL DIMENSIONS TO BE VERIFIED ONSITE.

| | | |
|------|--------------|------------|
| d | CONSTRUCTION | 13/10/2025 |
| REV: | DESCRIPTION: | DATE: |

ELECTRICAL DESIGN GROUP
ELECTRICAL BUILDING SERVICES CONSULTANTS

BRISBANE: P.O. Box 15 Sherwood Qld 4075
Phone: (07) 3278 4375
Email: brisbane@edg.net.au
Web: www.edg.net.au

ELECTRICAL DESIGN GROUP BRISBANE PTY LTD
ACN 092 710 793

TRADING AS:
ELECTRICAL DESIGN
GROUP

PROJECT:
ROYAL HOTEL, BEENLEIGH

SITE ADDRESS:
**85 GEORGE STREET, BEENLEIGH
QUEENSLAND**

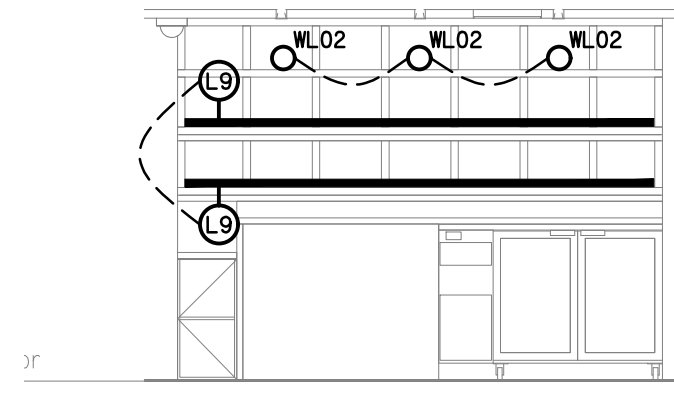
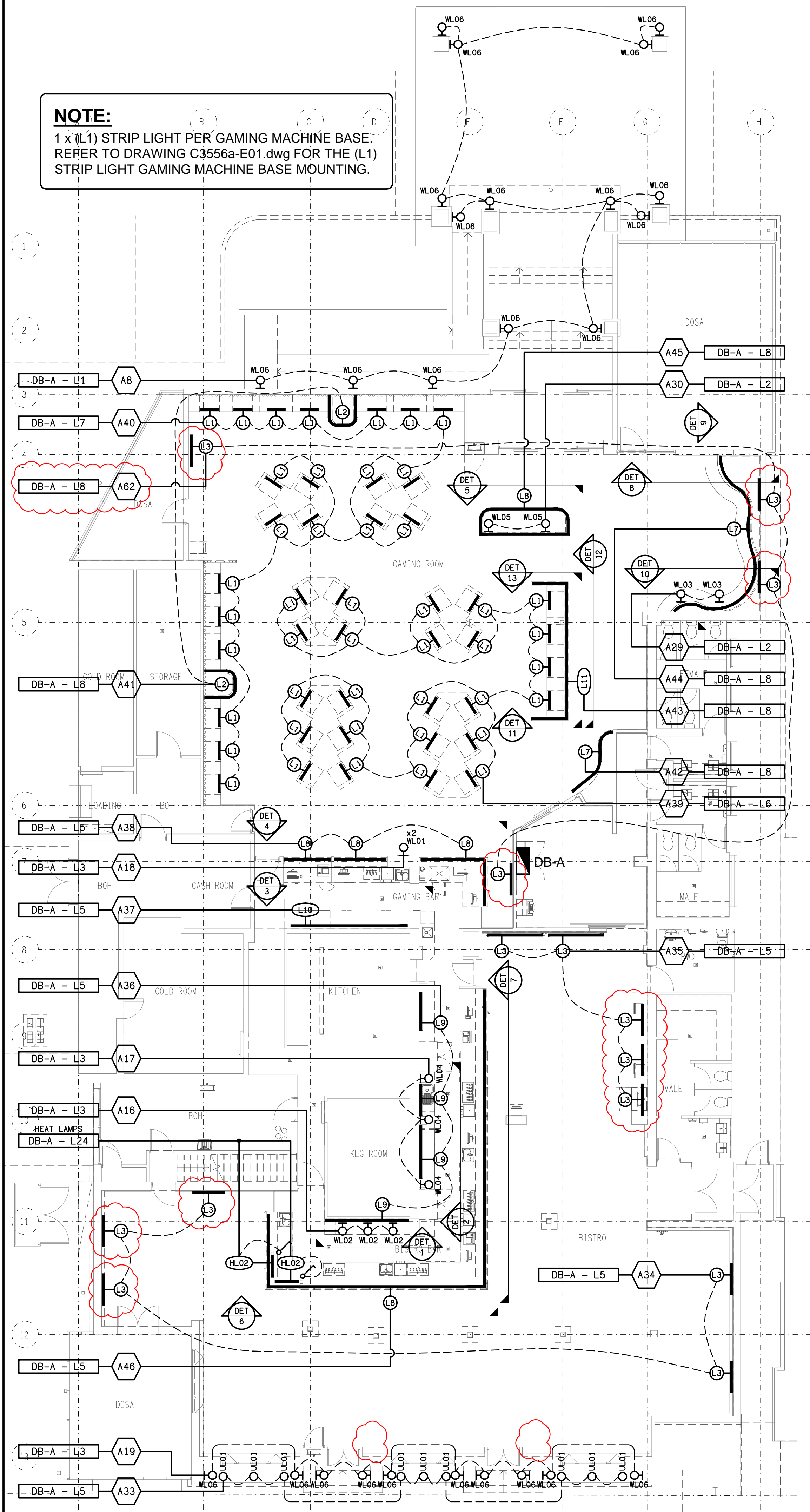
SCALE: 1:100 SHEET SIZE: A1
AT

DRAWING TITLE:
**ELECTRICAL SERVICES
REFLECTED CEILING PLAN**

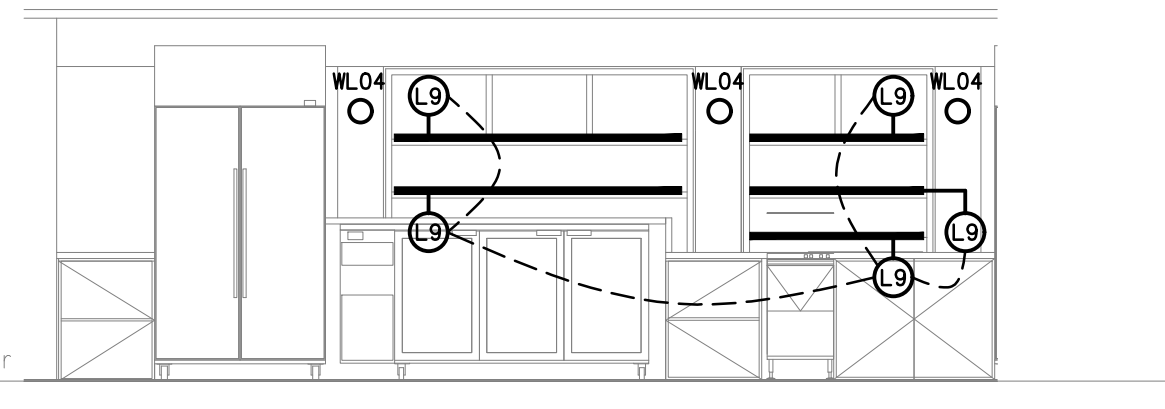
PROJECT NO: DRAWING NO: REVISION:
C3556a E04 D

NOTE:

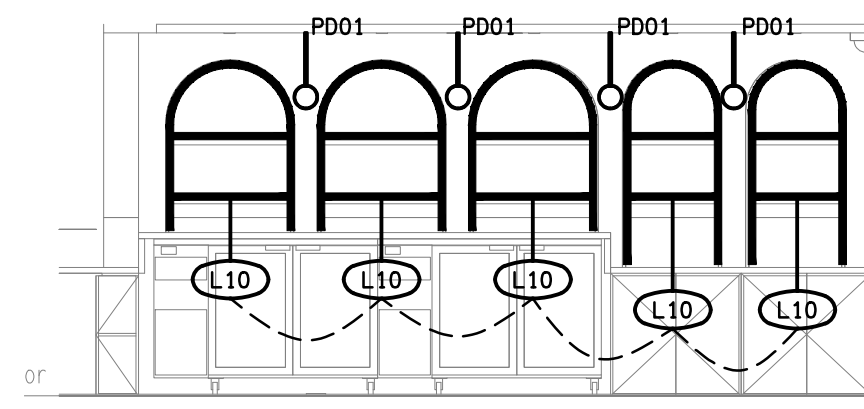
1 x (L1) STRIP LIGHT PER GAMING MACHINE BASE.
REFER TO DRAWING C3556a-E01.dwg FOR THE (L1)
STRIP LIGHT GAMING MACHINE BASE MOUNTING.



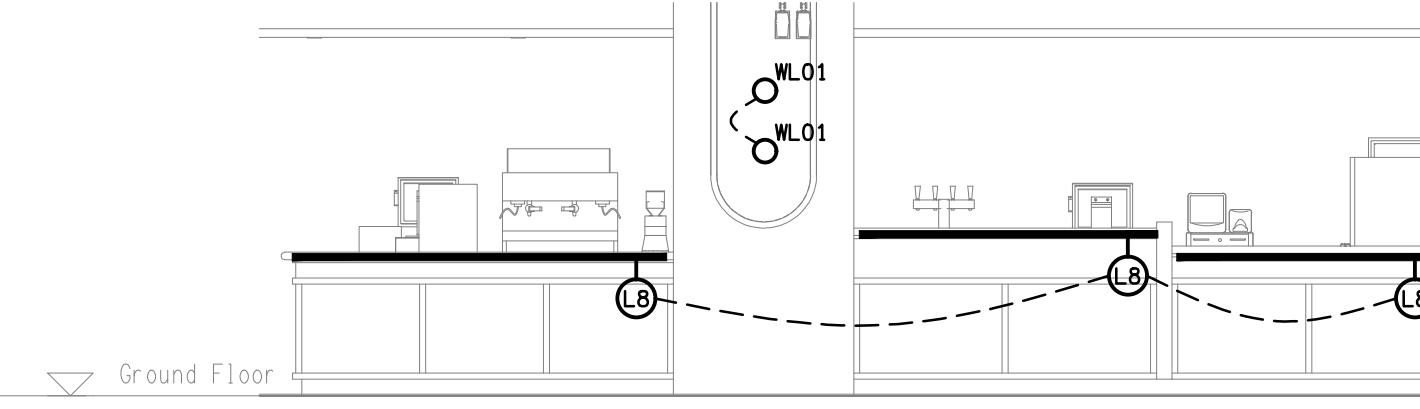
DETAIL 1
BISTRO BACK BAR ELEVATION
SCALE 1: 50



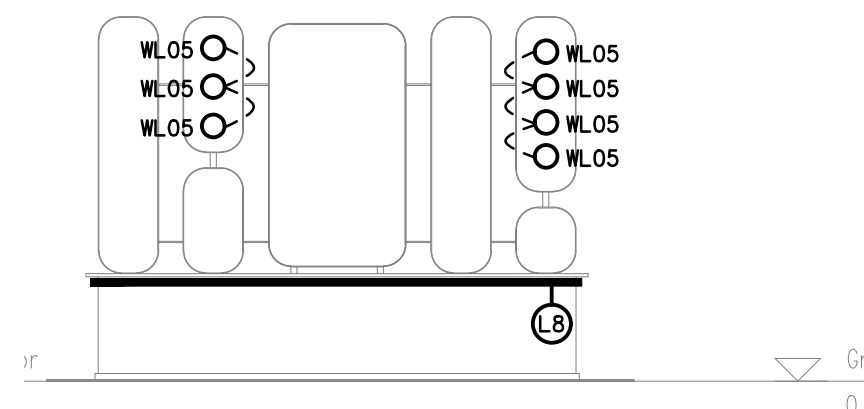
DETAIL 2
SPORTS BACK BAR ELEVATION
SCALE 1: 50



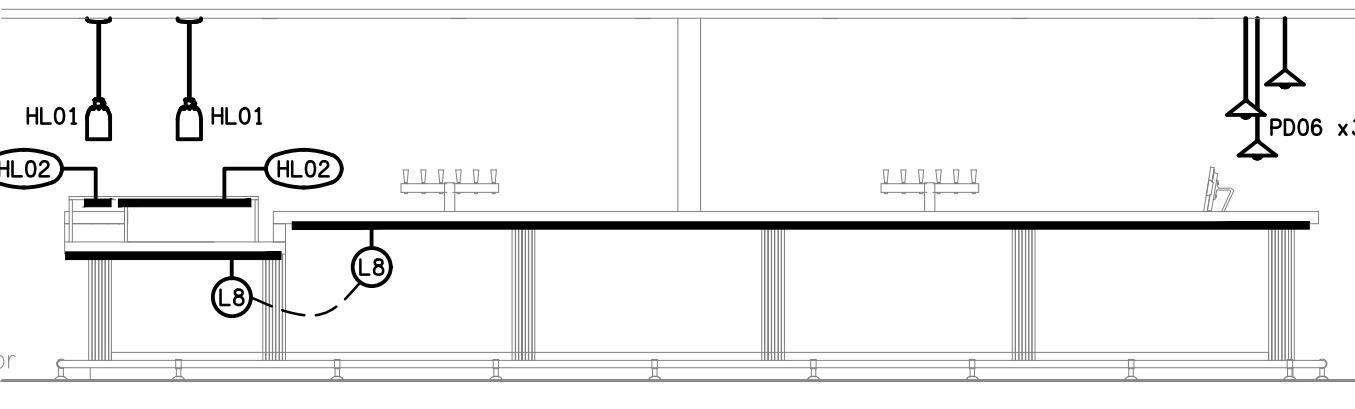
DETAIL 3
GAMING BACK BAR ELEVATION
SCALE 1: 50



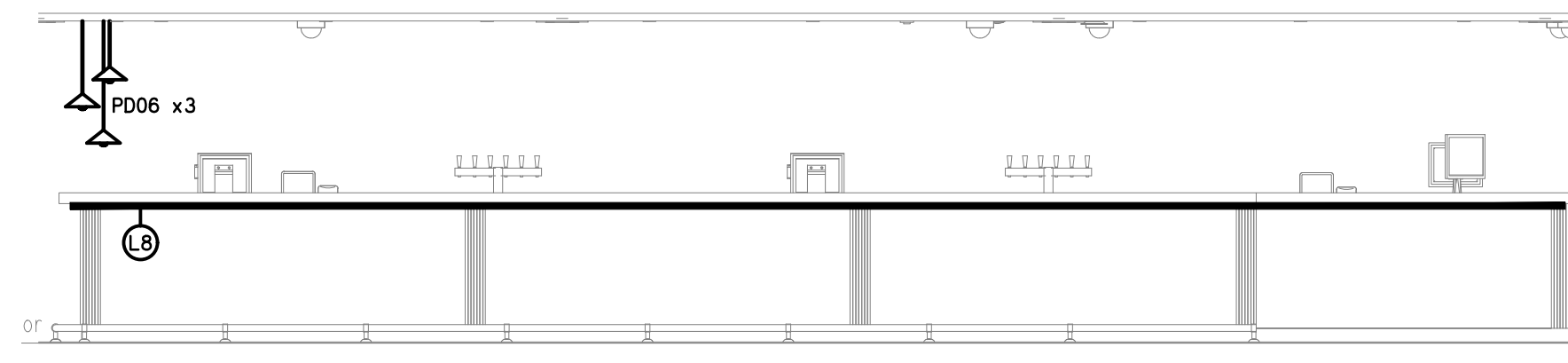
DETAIL 4
GAMING FRONT BAR ELEVATION
SCALE 1: 50



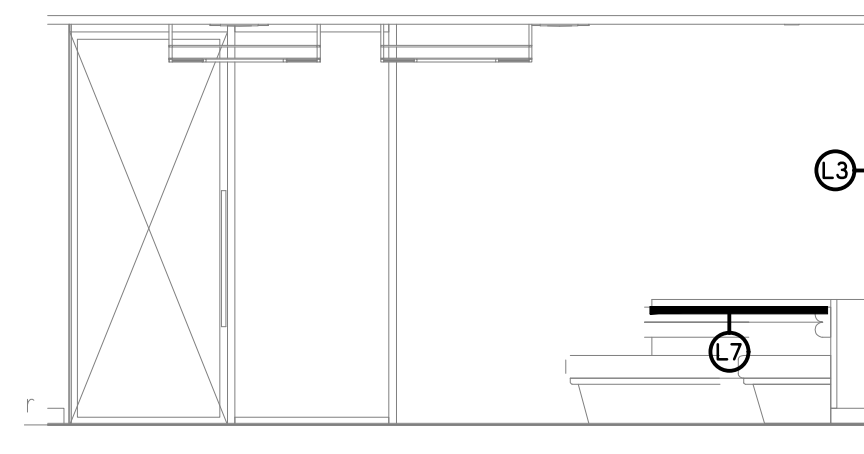
DETAIL 5
GAMING FEATURE JOINERY ELEVATION
SCALE 1: 50



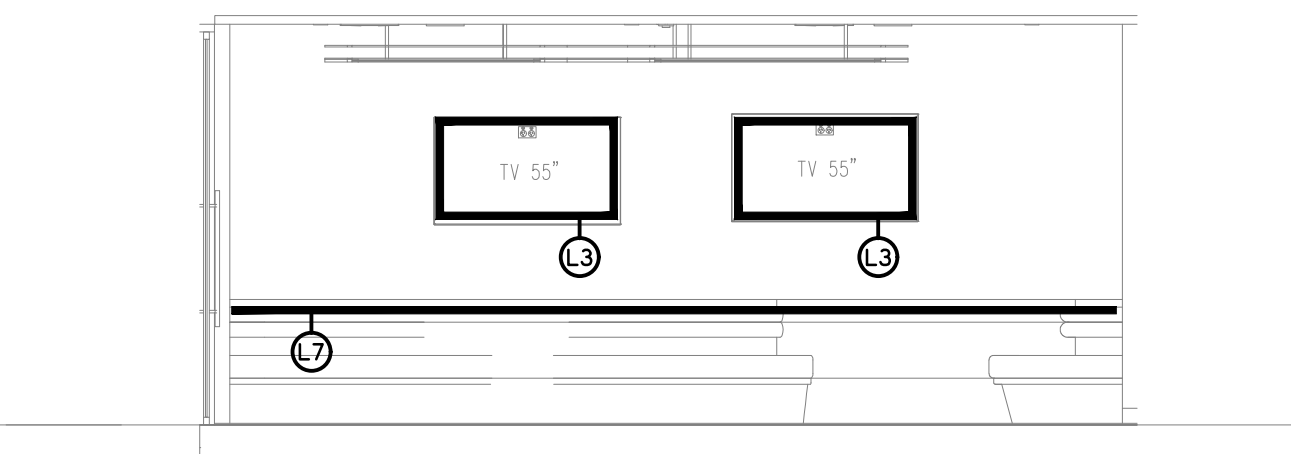
DETAIL 6
BISTRO FRONT BAR ELEVATION
SCALE 1: 50



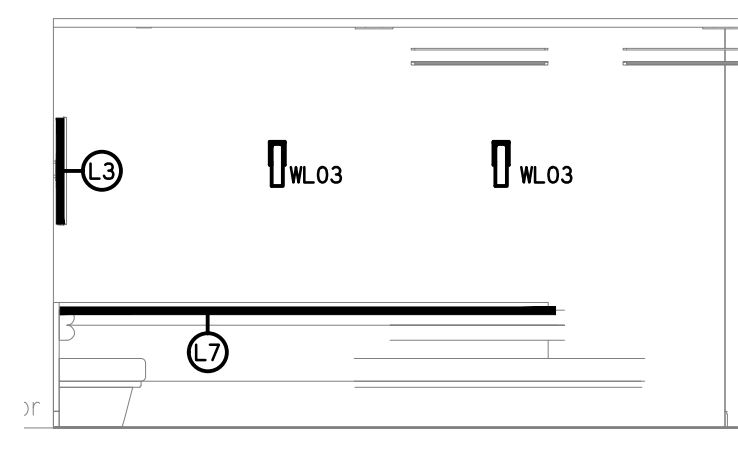
DETAIL 7
SPORTS FRONT BAR ELEVATION
SCALE 1: 50



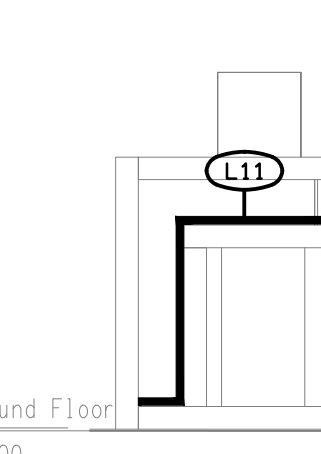
DETAIL 8
GAMING LOUNGE ELEVATION C
SCALE 1: 50



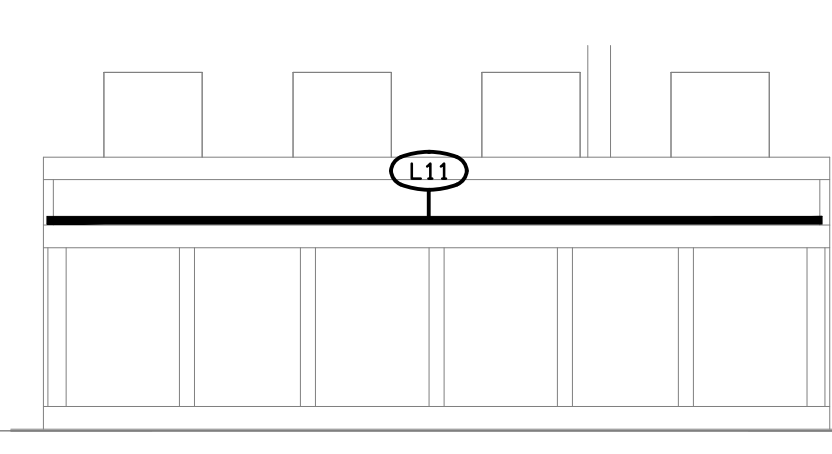
DETAIL 9
GAMING LOUNGE ELEVATION B
SCALE 1: 50



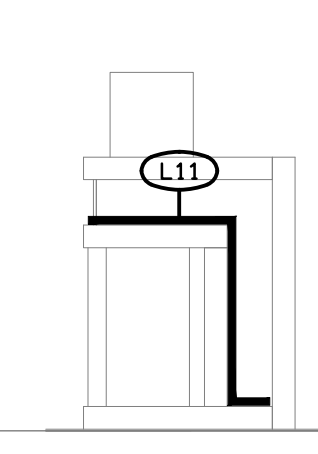
DETAIL 10
GAMING LOUNGE ELEVATION A
SCALE 1: 50



DETAIL 11
GAMING JOINERY ELEVATION A
SCALE 1: 50



DETAIL 12
GAMING JOINERY ELEVATION B
SCALE 1: 50



DETAIL 13
GAMING JOINERY ELEVATION C
SCALE 1: 50

THE COPYRIGHT OF THIS DRAWING REMAINS THE PROPERTY OF THE ELECTRICAL DESIGN GROUP.

USE FIGURED DIMENSIONS IN PREFERENCE TO SCALE.

ALL DIMENSIONS TO BE VERIFIED ONSITE.

| | | |
|------|--------------|------------|
| C | CONSTRUCTION | 19/08/2025 |
| REV: | DESCRIPTION: | DATE: |

ELECTRICAL DESIGN GROUP
ELECTRICAL BUILDING SERVICES CONSULTANTS

BRISBANE: P.O. Box 15, Sherwood Qld 4075
Phone: (07) 3278 4375
Email: brisbane@edg.net.au
Web: www.edg.net.au

ELECTRICAL DESIGN GROUP BRISBANE PTY LTD
ACN 092 710 793

TRADING AS:
ELECTRICAL DESIGN GROUP

PROJECT:

ROYAL HOTEL, BEENLEIGH

SITE ADDRESS:

**85 GEORGE STREET, BEENLEIGH
QUEENSLAND**

SCALE: SHEET SIZE:

1:100 & 1:50 AT **A1**

DRAWING TITLE:

**ELECTRICAL SERVICES
JOINERY & WALL LIGHTING
PLAN & DETAILS**

PROJECT NO: DRAWING NO: REVISION:

C3556a E05 C