



ELECTRICAL DESIGN GROUP

ELECTRICAL BUILDING SERVICES CONSULTANTS

P.O. Box 15, SHERWOOD Q. 4075

Phone: (07) 3278 4375

Website: www.edg.net.au Email: brisbane@edg.net.au

C3592a - ACGS - CHILDCARE

C3592a-0001(D).xls

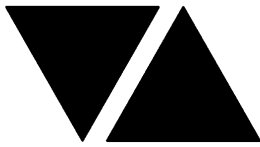
ELECTRICAL SERVICES CONTRACT DOCUMENT SCHEDULE

REVISION D - 20 OCTOBER 2025

ISSUING INFORMATION				DATE OF ISSUE							
				DAY	20	26	28	20			
				MONTH	08	08	08	10			
				YEAR	25	25	25	25			
REASON FOR ISSUE					T	T	T	C			
A = APPROVAL C = CONSTRUCTION N = COORDINATION P = PRELIMINARY T = TENDER											

DISTRIBUTION				NUMBER OF COPIES							
WWW.EDG.NET.AU				1E	1E	1E	1E				
BSPN ARCHITECTURE				1E	1E	1E	1E				
P = PRINT T = TRACING D = DISC E = EMAIL F = FAX											

DOCUMENTS		REVISION									
C3592a-E01.dwg	LEGEND & DETAILS	A	B	C	D						
C3592a-E02.dwg	NOTES & LOCATION PLAN	A			B						
C3592a-E03.dwg	FLOOR PLAN & REFLECTED CEILING PLAN	A	B	C	D						
C3592a-0001.xls	CONTRACT DOCUMENT SCHEDULE	A	B	C	D						
C3592a-0002.xls	EQUIPMENT SCHEDULE	A	B	C	D						
C3592a-0004.xls	DISTRIBUTION BOARD DB-A SCHEDULE	A									



ELECTRICAL DESIGN GROUP

ELECTRICAL BUILDING SERVICES CONSULTANTS

P.O. Box 15, SHERWOOD Q. 4075

Phone: (07) 3278 4375 Fax: (07) 3716 0222

Web Site: www.edg.net.au Email: brisbane@edg.net.au

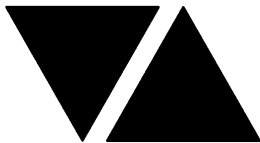
C3592a - ACGS - CHILDCARE

C3592a-0002(D).xls

ELECTRICAL EQUIPMENT SCHEDULE

REVISION D - 20 OCTOBER 2025

THE EQUIPMENT SUPPLIER CONTACT DETAILS MAY BE AVAILABLE ON THE EDG WEBSITE VIA THE FOLLOWING LINK www.edg.net.au/links.html					
TYPE	LAMPS	DESCRIPTION	COLOUR / ACCESSORY	CATALOGUE No	REV
L1	28W 4000K LED	RECESSED 55 DEG BEAM DOWNLIGHT C/W REMOTE DALI DIMMABLE DRIVER	WHITE TRIM SILVER REFLECTOR	GAMMA ILLUMINATION COBALT 1442-4K	D
L2	22W 4000K LED	RECESSED 55 DEG BEAM DOWNLIGHT C/W REMOTE DALI DIMMABLE DRIVER	WHITE TRIM SILVER REFLECTOR	GAMMA ILLUMINATION COBALT 1402-4K-22W	D
L3	13W 4000K LED	RECESSED 55 DEG BEAM DOWNLIGHT C/W REMOTE DRIVER	WHITE TRIM SILVER REFLECTOR	GAMMA ILLUMINATION COBALT 1402-4K-13W	D
L4	13W 4000K LED	RECESSED 55 DEG BEAM ADJUSTABLE DOWNLIGHT C/W REMOTE DRIVER	WHITE TRIM WHITE REFLECTOR	GAMMA ILLUMINATION MYLO 1004-VWFL-4K-13W	A
L5	A SINGLE HORIZONTAL RUN OF LED STRIP LIGHT 4000K WHITE LEDS AT 12MM SPACING WITH REMOTE CONTROL GEAR. MOUNT THE LED STRIP ALONG THE TOP OF THE WINDOW AS PER THE ARCHITECTURAL JOINERY DETAILS THE SUPPLIER IS TO CUT / JOIN THE LED STRIPS TO SUIT THE SITE DIMENSIONS. DO NOT CUT THE LED STRIPS ON SITE SCREW FIX THE ALUMINIUM SUPPORT IN PLACE.			NEON PRODUCTS AUSTRALIA LF-DFB-NW-300-12 + PR-LIN172153-F	B
L6	28W 4000K LED	SURFACE MOUNTED IP65 BUNKER C/W INTEGRAL DRIVER	WHITE TRIM	GAMMA ILLUMINATION MAXI PAT 1359-4K-28W	A
L7	EXISTING HIGH LEVEL FLOOD LIGHT TO BE RETAINED AND RESUPPLIED.				A
L8	EXISTING SOFFIT FLOOD LIGHT TO BE RETAINED AND RESUPPLIED.				A
L9	52W 4000K LED	WALL MOUNTED 65 X 65 BEAM IP65 AREA LIGHT DOWNWARD ORIENTATION C/W INTERNAL DRIVER. CONFIRM THE MOUNTING HEIGHT ON SITE WITH EH ARCHITECT	BLACK	GAMMA ILLUMINATION MOLO 1573-4K-52W1413-3K-22W	A
L10	22W 4000K LED	RECESSED ADJUSTABLE DOWNLIGHT C/W REMOTE DRIVER	BLACK	GAMMA ILLUMINATION MERCURY 1290-VWFL 4K-22W	D
L11	22W 4000K LED	RECESSED 75 DEG BEAM DOWNLIGHT C/W REMOTE DRIVER	WHITE TRIM WHITE REFLECTOR	GAMMA ILLUMINATION COBALT 1402-WR-4K-22W	D
P1	72W 3500K LED	DECORATIVE PENDANT C/W REMOTE DALI DIMMABLE DRIVER. SUSPEND THE TOP OF THE SHADE 300 BELOW THE CEILING.	YELLOW	LUXBOX KURTAIN STRATUM LARGE KS-L-82-2W-35-DI-G-RD	A



ELECTRICAL DESIGN GROUP

ELECTRICAL BUILDING SERVICES CONSULTANTS

P.O. Box 15, SHERWOOD Q. 4075

Phone: (07) 3278 4375 Fax: (07) 3716 0222

Web Site: www.edg.net.au Email: brisbane@edg.net.au

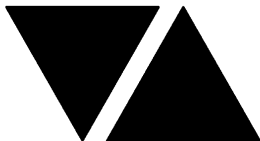
C3592a - ACGS - CHILDCARE

C3592a-0002(D).xls

ELECTRICAL EQUIPMENT SCHEDULE

REVISION D - 20 OCTOBER 2025

THE EQUIPMENT SUPPLIER CONTACT DETAILS MAY BE AVAILABLE ON THE EDG WEBSITE VIA THE FOLLOWING LINK www.edg.net.au/links.html					
TYPE	LAMPS	DESCRIPTION	COLOUR / ACCESSORY	CATALOGUE No	REV
P2	72W 3500K LED	DECORATIVE PENDANT C/W REMOTE DALI DIMMABLE DRIVER. SUSPEND THE TOP OF THE SHADE 300 BELOW THE CEILING.	YELLOW	LUXBOX KURTAIN STRATUM LARGE KS-L-82-2W-35-DI-G-RD	A
P3	72W 3500K LED	DECORATIVE PENDANT C/W REMOTE DALI DIMMABLE DRIVER. SUSPEND THE TOP OF THE SHADE 300 BELOW THE CEILING.	BLUE	LUXBOX KURTAIN STRATUM LARGE KS-L-1W-1R-35-DI-G-RD	A
P4	72W 3500K LED	DECORATIVE PENDANT C/W REMOTE DALI DIMMABLE DRIVER. SUSPEND THE TOP OF THE SHADE 300 BELOW THE CEILING.	GREEN	LUXBOX KURTAIN STRATUM LARGE KS-L-58-1F-35-DI-G-RD	A
P5	72W 3500K LED	DECORATIVE PENDANT C/W REMOTE DALI DIMMABLE DRIVER. SUSPEND THE TOP OF THE SHADE 300 BELOW THE CEILING.	GREEN	LUXBOX KURTAIN STRATUM LARGE KS-L-58-1F-35-DI-G-RD	A
P6	72W 3500K LED	DECORATIVE PENDANT C/W REMOTE DALI DIMMABLE DRIVER. SUSPEND THE TOP OF THE SHADE 300 BELOW THE CEILING.	RED	LUXBOX KURTAIN STRATUM LARGE KS-L-39-90-35-DI-G-RD	A
E1	LED	EMERGENCY LIGHT: RECESSED NON-MAINTAINED EMERGENCY LIGHT. AS2293 CLASSIFICATION C0-D40 - C90-D40.	WHITE	CLEVERTRONICS CLIFE	B
E2	LED	EMERGENCY LIGHT: RECESSED NON-MAINTAINED EMERGENCY LIGHT. AS2293 CLASSIFICATION C0-D40 - C90-D40.	BLACK	CLEVERTRONICS CLIFE-BLK	B
EX	LED	EXIT LIGHT THEATRE MASK: MAINTAINED 24M VIEWING DISTANCE EXIT LIGHT C/W DIFFUSERS & DIRECTIONAL ARROWS AS SHOWN. CEILING OR WALL MOUNT BETWEEN 2100mm & 2700mm AFFL IF THERE IS NO VERTICAL SURFACE TO MOUNT THE FITTING ON WITHIN THIS RANGE CONFIRM THE MOUNTING HEIGHT WITH THE ENGINEER. LITHIUM ION BATTERY	WHITE	CLEVERTRONICS LSBLED	B
EX BK	LED	EXIT LIGHT THEATRE MASK: MAINTAINED 24M VIEWING DISTANCE EXIT LIGHT C/W DIFFUSERS & DIRECTIONAL ARROWS AS SHOWN. CEILING OR WALL MOUNT BETWEEN 2100mm & 2700mm AFFL IF THERE IS NO VERTICAL SURFACE TO MOUNT THE FITTING ON WITHIN THIS RANGE CONFIRM THE MOUNTING HEIGHT WITH THE ENGINEER. LITHIUM ION BATTERY	BLACK	CLEVERTRONICS LSBLED-BLK	B



ELECTRICAL DESIGN GROUP

ELECTRICAL BUILDING SERVICES CONSULTANTS

P.O. Box 15, SHERWOOD Q. 4075

Phone: (07) 3278 4375 Fax: (07) 3716 0222

Web Site: www.edg.net.au Email: brisbane@edg.net.au

C3592a - ACGS - CHILDCARE

C3592a-0002(D).xls

ELECTRICAL EQUIPMENT SCHEDULE

REVISION D - 20 OCTOBER 2025

THE EQUIPMENT SUPPLIER CONTACT DETAILS MAY BE AVAILABLE ON THE EDG WEBSITE VIA THE FOLLOWING LINK www.edg.net.au/links.html					
TYPE	LAMPS	DESCRIPTION	COLOUR / ACCESSORY	CATALOGUE No	REV
SWITCH PANEL (SP)		MULTIGANG FACEPLATE WITH ONE MECHANISM PER GROUP OF LIGHTS CONTROLLED MOUNTED AT 1000mm AFFL BLACK ENGRAVING	WHITE	CLIPSAL C2000 SERIES FACEPLATE	A
PRESENCE DETECTOR SENSOR (PD)		RECESSED PRESENCE DETECTOR SENSOR TO BE WIRED TO OPERATE IN PARALLEL TO ALLOW THE LIGHTS TO TURN ON FOR 15 MINUTES UPON DETECTION OF MOVEMENT WHEN THE SUPPLY HAS MANUALLY BEEN TURNED ON.		CLIPSAL	A
ONE-WAY SWITCH		ONE-WAY SWITCH C/W CIRCUIT IDENTIFICATION ON THE FACEPLATE BEHIND THE SURROUND MOUNTED AT 1000mm AFFL UNLESS NOTED OTHERWISE.	WHITE UNLESS NOTED AS BK (BLACK)	CLIPSAL C2000 SERIES FACEPLATE	A
TWO-WAY SWITCH		TWO-WAY SWITCH C/W CIRCUIT IDENTIFICATION ON THE FACEPLATE BEHIND THE SURROUND MOUNTED AT 1000mm AFFL UNLESS NOTED OTHERWISE.	WHITE UNLESS NOTED AS BK (BLACK)	CLIPSAL C2000 SERIES FACEPLATE	A
CONTACTOR (Cx)		HEAVY DUTY SWITCHING CONTACTOR			A
RELAY (Rx)		CONTROL RELAY			A
MANUAL DALI POT		DALI POT C/W INTEGRAL 20 DALI DEVICE POWER SUPPLY C/W CIRCUIT IDENTIFICATION ON THE FACEPLATE BEHIND THE SURROUND MOUNTED IN THE DB-G / DB-1 ESCUTCHEON. FACTOR SET POWER ON RETURN TO LAST LEVEL.	WHITE	SMARTSCAPE DALI RD20	A
SINGLE POWER OUTLET		SINGLE 10 AMP POWER OUTLET C/W CIRCUIT IDENTIFICATION ON THE FACEPLATE BEHIND THE SURROUND MOUNT AT 300 AFFL U.N.O.	WHITE	CLIPSAL C2000 SERIES FACEPLATE	A
POWER OUTLET 20A		SINGLE 20 AMP POWER OUTLET C/W CIRCUIT IDENTIFICATION ON THE FACEPLATE BEHIND THE SURROUND MOUNT AT 300 AFFL U.N.O.	WHITE	CLIPSAL C2000 SERIES FACEPLATE	A
DOUBLE POWER OUTLET		DOUBLE 10 AMP POWER OUTLET C/W CIRCUIT IDENTIFICATION ON THE FACEPLATE BEHIND THE SURROUND MOUNT AT 300 AFFL U.N.O.	WHITE	CLIPSAL C2000 SERIES FACEPLATE	A
POWER OUTLET USB		DOUBLE POWER OUTLET C/W USB A AND USB C CHARGER, CIRCUIT IDENTIFICATION ON THE FACEPLATE BEHIND THE SURROUND. MOUNT ABOVE BENCH	WHITE	CLIPSAL C2000 SERIES FACEPLATE	B
POWER OUTLET MW		SINGLE POWER OUTLET C/W CIRCUIT IDENTIFICATION ON THE FACEPLATE BEHIND THE SURROUND MOUNTED WITHIN THE JOINERY AS PER THE ARCHITECTURAL ELEVATION TO SUPPLY THE MICROWAVE.	WHITE	CLIPSAL C2000 SERIES FACEPLATE	A



ELECTRICAL DESIGN GROUP

ELECTRICAL BUILDING SERVICES CONSULTANTS

P.O. Box 15, SHERWOOD Q. 4075

Phone: (07) 3278 4375 Fax: (07) 3716 0222

Web Site: www.edg.net.au Email: brisbane@edg.net.au

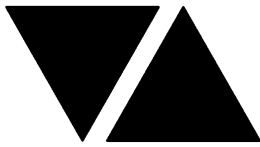
C3592a - ACGS - CHILDCARE

C3592a-0002(D).xls

ELECTRICAL EQUIPMENT SCHEDULE

REVISION D - 20 OCTOBER 2025

THE EQUIPMENT SUPPLIER CONTACT DETAILS MAY BE AVAILABLE ON THE EDG WEBSITE VIA THE FOLLOWING LINK www.edg.net.au/links.html					
TYPE	LAMPS	DESCRIPTION	COLOUR / ACCESSORY	CATALOGUE No	REV
POWER OUTLET AD		SINGLE POWER OUTLET C/W CIRCUIT IDENTIFICATION ON THE FACEPLATE BEHIND THE SURROUND MOUNTED WITHIN THE AUTO DOOR HEAD MULLION.	WHITE	CLIPSAL C2000 SERIES FACEPLATE	A
SIGN CONNECTION		COORDINATE THE LOCATION AND CONNECTION WITH THE SIGN CONTRACTOR ENSURING THE GPO / ISOLATORS ARE PROVIDED WITH APPROPRIATE WEATHER PROTECTION AND ARE CONCEALED FROM VIEW.			A
CR-A		EXISTING COMMUNICATIONS RACK CR-A TO BE RETAINED AND MODIFIED AS NECESSARY TO ACCOMMODATE THE NEW COMMUNICATIONS OUTLETS. REMOVE ALL REDUNDANT UTP CABLING AND PROVIDE NEW CAT 6 PATCH PANELS TO ACCOMMODATE THE NEW CAT 6 OUTLETS AS REQUIRED. ALL EXISTING COMMUNICATIONS OUTLETS OUTSIDE OF THE WORKS AREA ARE TO BE RETAINED AND RECONNECTED AS REQUIRED TO MAINTAIN THERE OPERATION.			A
COMMUNICATIONS OUTLET		RJ45 CAT-6 COMMUNICATIONS OUTLET, CABLED BACK TO NEW CAT 6 PATCH PANELS IN CR-A VIA 4-PAIR CAT-6 UTP CABLE. MOUNT UP TO 3 RJ45 OUTLETS PER MULTI-GANG FACEPLATE WITH SEPARATE PERMANENT LABELLING FOR EACH OUTLET. MOUNT AT 300 AFFL UNLESS NOTED OTHERWISE	WHITE UNLESS NOTED AS BK THEN BLACK	CLIPSAL C2000 SERIES FACEPLATE	B
COMMUNICATIONS OUTLET (RK)		RJ45 CAT-6 COMMUNICATIONS OUTLET MOUNTED IN A VERTICALLY ORIENTATED WALL BOX TO ALLOW THE OUTLET TO BE RECESSED WITHIN THE WALL CAVITY , CABLED BACK TO A CAT 6 PATCH PANELS IN CR-A VIA 4-PAIR CAT-6 UTP CABLE. MOUNT AT 1,400 AFFL. PROVIDE PERMANENT LABELLING FOR EACH OUTLET.	WHITE	CLIPSAL C2000 SERIES FACEPLATE PLUS REPELEC RECWP1WH	A
CCTV OUTLET		MALE RJ45 CAT-6 CCTV PLUS, CABLED BACK TO NEW A CAT 6 PATCH PANEL IN CR-A VIA PURPLE 4-PAIR CAT-6 UTP CABLE. PROVIDE SUFFICIENT LENGTH FOR THE PLUG TO BE CONNECTED DIRECTLY INTO THE CCTV CAMERA PROVIDED BY THE SCHOOL. COORDINATE THE EXACT POSITION ON SITE WITH THE SCHOOL.			A
FUTURE CCTV OUTLET		RJ45 CAT-6 COMMUNICATIONS OUTLET FOR A FUTURE CCTV CAMERA, CABLED BACK TO NEW CAT 6 PATCH PANELS IN CR-A VIA 4-PAIR PURPLE CAT-6 UTP CABLE. MOUNT ON THE CEILING / FACIA AS INDICATED.	WHITE	CLIPSAL C2000 SERIES FACEPLATE	C
HDMI OUTLET (H)		PROVIDE A FACTORY TERMINATED HDMI CABLE FROM A FACEPLATE BEHIND THE TV TO A LOWER FACE PLATE ADJACENT THE GPO. PROVIDE THE HDMI CABLE WITH A LENGTH OF LESS THAN 5M AS HIGH SPEED HDMI 2.0	WHITE	CLIPSAL C2000 SERIES FACEPLATE	A
MSB		EXISTING MAIN SWITCHBOARD TO REMAIN AS IS.			A
DB-A		PROVIDE A NEW DISTRIBUTION BOARD DB-A AS PER THE DB-A SCHEDULE AND NOTES. UTILISE THE EXISTING DISTRIBUTION BOARD SUBMAIN FROM THE MSB TO SUPPLY THE NEW DISTRIBUTION BOARD. THE EXISTING DISTRIBUTION BOARD IS TO BE REMOVED AND ANY REMAINING CIRCUITS ARE TO BE SUPPLIED FROM THE NEW DB-A WITH NEW SWITCHGEAR AND CONTROLS THAT MATCH THE EXISTING IN CAPACITY AND FUNCTION.			A



ELECTRICAL DESIGN GROUP

ELECTRICAL BUILDING SERVICES CONSULTANTS

P.O. Box 15, SHERWOOD Q. 4075

Phone: (07) 3278 4375 Fax: (07) 3716 0222

Web Site: www.edg.net.au Email: brisbane@edg.net.au

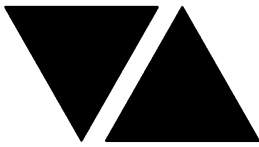
C3592a - ACGS - CHILDCARE

C3592a-0002(D).xls

ELECTRICAL EQUIPMENT SCHEDULE

REVISION D - 20 OCTOBER 2025

THE EQUIPMENT SUPPLIER CONTACT DETAILS MAY BE AVAILABLE ON THE EDG WEBSITE VIA THE FOLLOWING LINK www.edg.net.au/links.html					
TYPE	LAMPS	DESCRIPTION	COLOUR / ACCESSORY	CATALOGUE No	REV
FIRE INDICATOR PANEL (FIP)		FLUSH MOUNTED AS1670.1 FIRE INDICATOR PANEL CONTAINING A THE FIRE DETECTION CONTROL AND INDICATING EQUIPMENT AND THE EMERGENCY WARNING CONTROL AND INDICATING EQUIPMENT. NETWORK THE NEW FIP INTO THE SCHOOLS EXISTING BRIGADE MONITORED FIRE ALARM SYSTEM.			A
SMOKE DETECTOR		SURFACE MOUNTED ADDRESSABLE AS1670.1 COMPLIANT SMOKE DETECTOR WHITE UNLESS NOTED AS BK (BLACK). ENSURE ALL SMOKE DETECTORS ARE PROVIDED AS AS 7240.7 POINT DETECTORS WITH A PERFORMANCE OF 6 TO 12 % OBS/M SET AT 7.8 %			A
CONCEALED SPACE SMOKE DETECTOR		ADDRESSABLE AS1670 COMPLIANT CONCEALED SPACE SMOKE DETECTOR C/W REMOTE INDICATOR AND REMOTE ACCESS BRACKET IF REQUIRED ENSURE ALL SMOKE DETECTORS ARE PROVIDED AS AS 7240.7 POINT DETECTORS WITH A PERFORMANCE OF 6 TO 12 % OBS/M SET AT 7.8 %			A
THERMAL DETECTOR		SURFACE MOUNTED ADDRESSABLE AS1670 COMPLIANT THERMAL DETECTOR WHITE UNLESS NOTED AS BK (BLACK)			A
FIRE ALARM SYSTEM SPEAKER		RECESSED AS1670.1 COMPLIANT RECESSED ALERT AND EVACUATION SPEAKER C/W 100V MULTI-TAP TRANSFORMER AND FLUSH GRILLE.	WHITE UNLESS NOTED AS BK (BLACK)	TYPE TO MATCH THE PA BELL SPEAKER IN APPEARANCE	A
FIRE ALARM SYSTEM ACCESS CONTROL INTERFACE		INTERFACE THE FIRE ALARM SYSTEM TO THE SECURITY SYSTEM SUCH THAT UPON ALARM THE DOOR UNLOCKS.			A
FIRE ALARM SYSTEM STROBE		PROVIDE A WEATHERPROOF AS1670.1 ALARM STROBE AT HIGH LEVEL.			A
SECURITY EQUIPMENT		EXISTING SECURITY EQUIPMENT TO BE UPGRADES AS NECESSARY TO ACCOMMODATE THE ADDITIONS AND CHANGES. THE EXISTING POWER OUTLETS AND NETWORK CONNECTION IS TO BE RETAINED.			A
AD		INTERFACE THE ACCESS CONTROL SYSTEM INTO THE AUTO DOOR.			A
INTRUDER DETECTION SENSOR		DUAL-TECHNOLOGY MOVEMENT DETECTORS WALL MOUNTED AS PER THE MANUFACTURER'S SPECIFICATION. CONNECT TO THE LOCAL SECURITY EQUIPMENT WITH ONE DETECTOR PER ZONE. WHITE UNLESS NOTED AS BK THEN BLACK			B
PIEZO ALARM		WALL MOUNTED SECURITY SYSTEM INTRUDER BLACK			B
SECURITY STROBE SIREN		REPLACE THE EXISTING EXTERNAL SECURITY STROBE SIREN WITH A NEW STROBE SIREN			A
ACCESS CONTROL DOOR RELEASE PUSH BUTTON (PB)		PROVIDE THE DOOR WITH A FAIL SAFE PUSH BUTTON MOUNTED AT 1000 AFFL TO UNLOCK THE DOOR. PROVIDE BLACK ENGRAVING "IN AN EMERGENCY PRESS TO UNLOCK. CONNECT THE "PUSH BUTTON TO THE ACCESS CONTROL SYSTEM TO UNLOCK THE ASSOCIATED MAGNETIC HOLDER.	WHITE	CLIPSAL C2000 SERIES FACEPLATE	A



ELECTRICAL DESIGN GROUP

ELECTRICAL BUILDING SERVICES CONSULTANTS

P.O. Box 15, SHERWOOD Q. 4075

Phone: (07) 3278 4375 Fax: (07) 3716 0222

Web Site: www.edg.net.au Email: brisbane@edg.net.au

C3592a - ACGS - CHILDCARE

C3592a-0002(D).xls

ELECTRICAL EQUIPMENT SCHEDULE

REVISION D - 20 OCTOBER 2025

THE EQUIPMENT SUPPLIER CONTACT DETAILS MAY BE AVAILABLE ON THE EDG WEBSITE VIA THE FOLLOWING LINK www.edg.net.au/links.html					
TYPE	LAMPS	DESCRIPTION	COLOUR / ACCESSORY	CATALOGUE No	REV
ACCESS CONTROL DOOR ELECTRIC STRIKE 1 (ES1)		PROVIDE THE DOOR WITH ACCESS CONTROL UTILISING A FLUSH MOUNTED ELECTRIC DOOR STRIKE PLATE. CONNECT THE ELECTRIC STRIKE TO THE ACCESS CONTROL SYSTEM. PROVIDE CONCEALED DOOR READER MODULES & AUXILIARY POWER SUPPLIES AS REQUIRED. EACH ELECTRIC STRIKE DOOR IS TO BE PROVIDED WITH DOOR STATUS REPORTING (DOOR OPEN / DOOR CLOSED) REED SWITCH. ALL CABLING AND CONDUITS ASSOCIATED WITH THE ELECTRIC STRIKE IS TO BE CONCEALED.			A
ACCESS CONTROL DOOR ELECTRIC STRIKE 2 (ES2)		UTILISE THE EXISTING FLUSH MOUNTED ACCESS CONTROL ELECTRIC DOOR STRIKE PLATE. CONNECT THE ELECTRIC STRIKE TO THE ACCESS CONTROL SYSTEM. PROVIDE CONCEALED DOOR READER MODULES & AUXILIARY POWER SUPPLIES AS REQUIRED. PROVIDE THE ELECTRIC STRIKE DOOR WITH A NEW DOOR STATUS REPORTING (DOOR OPEN / DOOR CLOSED) REED SWITCH. ALL CABLING AND CONDUITS ASSOCIATED WITH THE ELECTRIC STRIKE IS TO BE CONCEALED.			A
ACCESS CONTROL DOOR ELECTRIC STRIKE 3 (ES3)		EXISTING EXTERNAL GATE ACCESS CONTROL ELECTRIC DOOR STRIKE PLATE TO BE RETAINED AS IS.			A
ACCESS CONTROL DOOR CARD READER (CR)		WALL-MOUNTED 1000AFFL VANDAL-RESISTANT ACCESS CONTROL SYSTEM HEAVY-DUTY PROXIMITY CARD READER PROVIDE DOOR READERS AND POWER SUPPLIES AS REQUIRED ALL EXISTING CARD READERS ARE TO BE REPLACED UNLESS NOTED OTHERWISE. ALL CABLING AND CONDUITS ASSOCIATED WITH THE CARD READER IS TO BE CONCEALED.			A
VIDEO INTERCOM CALL STATION (ICS)		AS PART OF THE SECURITY SCOPE, PROVIDE A FLUSH WEATHERPROOF WALL MOUNTED STAINLESS STEEL COLOUR IP VIDEO CALL STATION INTERFACED TO THE SCHOOL IT NETWORK TO GENERATE A TONE ON PREDEFINED SMART PHONES AND COMPUTERS. PROVIDE THE ABILITY FOR THE USER OF THE ASSOCIATED SMART PHONE AND COMPUTER TO TALK / SIGHT TO THE GUEST AT THE ICS AND UNLOCK THE AUTO DOOR. PROVIDE THE SYSTEM WITH THE ABILITY TO DISABLE THE INTERCOM VIA A PREDEFINED DATE / TIME SCHEDULE. SUBMIT DETAILS OF THE PROPOSED INTERCOM SYSTEM FOR APPROVAL.			A
PUBLIC ADDRESS RECESSED SPEAKER		FLUSH RECESSED PA SYSTEM CONE SPEAKER C/W WHITE GRILL.			A
PUBLIC ADDRESS HORN SPEAKER		WALL MOUNTED WEATHERPROOF PUBLIC ADDRESS HORN SPEAKER.			A
EMERGENCY CONTROL PANEL (ECP)		RELOCATE THE EXISTING PA SYSTEM EMERGENCY CONTROL PANEL.			A



ELECTRICAL DESIGN GROUP

ELECTRICAL BUILDING SERVICES CONSULTANTS

P.O. Box 15, SHERWOOD Q. 4075

Phone: (07) 3278 4375 Fax: (07) 3716 0222

Web Site: www.edg.net.au Email: brisbane@edg.net.au

C3592a - ACGS - CHILDCARE

C3592a-0004(A).xls

DISTRIBUTION BOARD DB-A

REVISION A - 20 AUGUST 2025

FAULT CURRENT: 6kA CHASSIS SIZE: 72 POLES CHASSIS RATING: 250A PHASES: 3							REV
MAIN SWITCH: 2500A NON AUTO LOAD BREAK CABLE: USE THE EXISTING SUBMAIN							A
ALL SWITCHGEAR IS TO BE SCHNEIDER TO MATCH THE EXISTING SWITCHGEAR USED ACROSS THE SITE							A
PROVIDE THE DB WITH A FULL WIDTH EMPTY DIN RAIL TO ACCOMMODATE FUTURE CONTACTORS AND CONTROLS. PROVIDE THE DB WITH AN AS2293 EMERGENCY LIGHTING CONTROL SYSTEM TO CONTROL THE ASSOCIATED EMERGENCY LIGHTS. PROVIDE THE DB WITH SURGE PROTECTION. ALLOW TO RECONNECT ALL EXISTING CIRCUITS THAT REMAIN WITH NEW SWITCHGEAR AND CONTROLS WITH RCD PROTECTION TO AS3000 THE ESCUTCHEON IS TO BE GLOSS WHITE AND SECURED WITH 1/4 TURN LATCHES ON ONE SIDE AND CHROME PLATED BRASS LIFT OF HINGES ON THE OTHER EXTERNAL COLOUR LIGHT GREY PROVIDE A SHOP DRAWING FOR APPROVAL. RECONNECT THE EXISTING SUB MAIN.							A
CIRC	PH	CIRCUIT BREAKER (amps)	CONTROL EQUIPMENT	CABLE SIZE (mm2)	LOCATION	CIRCUIT USE	A
P1	1	20	30mA RCBO	2.5	RECEPTION	FIP	A
P2	1	20	10mA RCBO	2.5	CIRCULATION	CLEANING	A
P3	1	20	30mA RCBO	2.5	ENTRY	AUTO DOOR	A
P4	1	20	30mA RCBO	2.5	RECEPTION	GPOs	A
P5	1	20	30mA RCBO	2.5	RECEPTION	PRINTER	A
P6	1	20	30mA RCBO	2.5	LAUNDRY	GPO	A
P7	1	20	30mA RCBO	2.5	LAUNDRY	WM	A
P8	1	20	10mA RCBO	2.5	NURSERY	GPO	A
P9	1	20	10mA RCBO	2.5	PREP	GPO	A
P10	1	20	10mA RCBO	2.5	PREP	REF	A
P11	1	20	10mA RCBO	2.5	PLAYROOM 6	GPO	A
P12	1	20	10mA RCBO	2.5	PLAYROOM 5	GPO	A
P13	1	20	10mA RCBO	2.5	PLAYROOM 4	GPO	A
P14	1	20	10mA RCBO	2.5	PLAYROOM 1	GPO	A
P15	1	20	10mA RCBO	2.5	PREP	REF	A
P16	1	20	10mA RCBO	2.5	PREP	GPO	A
P17	1	20	10mA RCBO	2.5	PLAYROOM 2	GPO	A
P18	1	20	10mA RCBO	2.5	PREP	GPO	A
P19	1	20	10mA RCBO	2.5	PLAYROOM 3	GPO	A
P20	1	20	30mA RCBO	2.5	KITCHEN	REF	A
P21	1	20	30mA RCBO	2.5	KITCHEN	OVEN	A
P22	1	20	30mA RCBO	2.5	KITCHEN	GPO	A
P23	1	20	30mA RCBO	2.5	KITCHEN	DW	A
P24	1	20	30mA RCBO	2.5	KITCHEN	DW	A
P25	1	20	30mA RCBO	2.5	STAFF	CR-A	A
P26	1	20	30mA RCBO	2.5	STAFF	GPO	A
P27	1	20	30mA RCBO	2.5	STAFF	REF	A
P28	1	20	30mA RCBO	2.5	STAFF	SECURITY	A
P29	1	20	30mA RCBO	2.5	OFFICE	GPO	A
P30	1	20	10mA RCBO	2.5	PREP	REF	A
							A
							A
							A
L1	1	20	30 mA RCBO PE CELL ON DUSK OFF DAWN	2.5	EXTERNAL	SIGN	A
L2	1	20	30mA RCBO	2.5	RECEPTION	LIGHTING	A
L3	1	20	30mA RCBO	2.5	AMENITY	LIGHTING	A
L4	1	20	30mA RCBO	2.5	PLAYROOM 6	LIGHTING	A
L5	1	20	30mA RCBO	2.5	PLAYROOM 5	LIGHTING	A
L6	1	20	30mA RCBO	2.5	PLAYROOM 4	LIGHTING	A
L7	1	20	30mA RCBO	2.5	PLAYROOM 3	LIGHTING	A
L8	1	20	30mA RCBO	2.5	PLAYROOM 2	LIGHTING	A
L9	1	20	30mA RCBO	2.5	PLAYROOM 1	LIGHTING	A
L10	1	20	30mA RCBO	2.5	OFFICE	LIGHTING	A
L11	1	20	30mA RCBO	2.5	STAFF OFFICE	LIGHTING	A
L12	1	20	30 mA RCBO PE CELL ON DUSK OFF DAWN	2.5	EXTERNAL	LIGHTING	A
							A
							A
							A

LEGEND

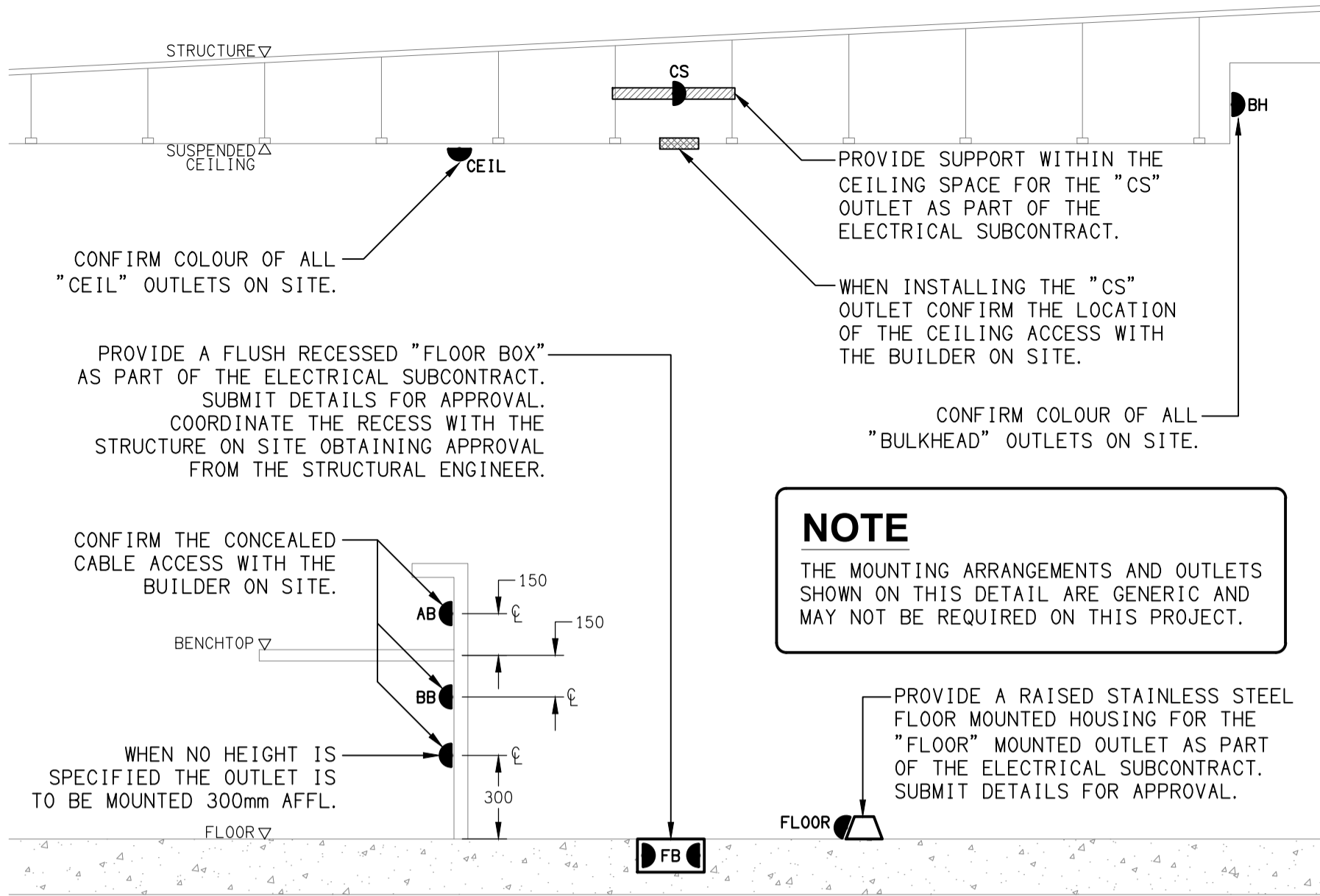
	ELECTRICAL SERVICES SWITCHBOARD.
	SWITCHBOARD / CONTROL PANEL NOT PROVIDED AS PART OF THE ELECTRICAL SUBCONTRACT.
	SINGLE POWER OUTLET.
	DOUBLE POWER OUTLET.
	SPECIAL PURPOSE POWER OUTLET.
	SIGN CONNECTION.
	INTERCONNECTED HDMI OUTLETS.
	EMERGENCY CONTROL PANEL.
	LIGHTING PRESENCE DETECTOR SWITCH.
	LIGHTING CONTROL SWITCH PANEL.
	ONE-WAY LIGHT SWITCH.
	TWO-WAY LIGHT SWITCH.
	LIGHTING DALI POT DIMMER.
	CIRCUIT LINE.
	SWITCH LINE.
	POWER CIRCUIT DESIGNATION. DENOTES DB AND CIRCUIT.
	ELECTRICAL EQUIPMENT AS NOTED.
	RJ45 COMMUNICATIONS OUTLET.
	RJ45 COMMUNICATIONS OUTLET MOUNTED IN A RECESS KIT.
	CCTV OUTLET.
	FUTURE CCTV OUTLET.
	SECURITY DIRECTIONAL MOTION DETECTOR.
	SECURITY SIREN STROBE.
	SECURITY PIEZO SIREN.
	PA HORN / HOOTER.
	PA MULTI-TAP CONE SPEAKER.
	FIRE EVACUATION SPEAKER.
	FIRE INDICATOR PANEL.
	FIRE DOOR INTERFACE.
	FIRE ALARM SYSTEM STROBE.
	THERMAL DETECTOR.
	SMOKE DETECTOR.
	CONCEALED SMOKE DETECTOR.
	ACCESS CONTROL AUTO DOOR INTERFACE.
	ACCESS CONTROL CARD READER.
	ACCESS CONTROL ELECTRIC STRIKE, TYPE AS NOTED.
	ACCESS CONTROL INTERCOM CALL STATION.
	ACCESS CONTROL EXIT PUSH BUTTON.

LEGEND

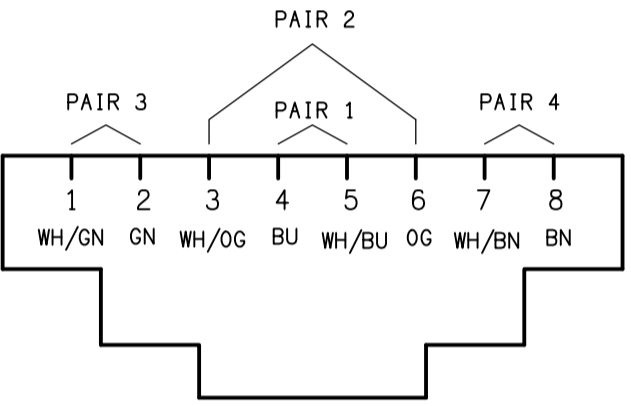
	SINGLE PHASE.
	CIRCUIT BREAKER.
	CONTACTOR - NORMALLY OPEN.
	CONTACTOR - NORMALLY CLOSED.
	REFER TO DETAIL NOTED FOR THE AREA SHOWN HATCHED. ADDITIONAL OUTLETS & FITTINGS MAY BE SHOWN ON DETAIL.
	E1: GENERAL LED EMERGENCY LIGHT, WHITE.
	E2: GENERAL LED EMERGENCY LIGHT, BLACK.
	EX: EMERGENCY LED EXIT LIGHT.
	L1: 28W DIMMABLE LARGE RECESSED DOWNLIGHT.
	L2: 13W DIMMABLE SMALL RECESSED DOWNLIGHT.
	L3: 13W RECESSED MEDIUM DOWNLIGHT.
	L4: 13W RECESSED SMALL DOWNLIGHT.
	L5: OVERHEAD WINDOW LED STRIP LIGHT.
	L6: SURFACE BUNKER LIGHT.
	L7: EXISTING HIGH LEVEL FLOODLIGHT TO BE RETAINED.
	L8: EXISTING SOFIT FLOODLIGHT TO BE RETAINED.
	L9: WALL MOUNTED AREA LIGHT.
	L10: 22W ADJUSTABLE RECESSED DOWNLIGHT, BLACK.
	L11: 22W RECESSED DOWNLIGHT, WHITE.
	P1: DECORATIVE YELLOW PENDANT.
	P2: DECORATIVE YELLOW PENDANT.
	P3: DECORATIVE BLUE PENDANT.
	P4: DECORATIVE GREEN PENDANT.
	P5: DECORATIVE GREEN PENDANT.
	P6: DECORATIVE RED PENDANT.

NOTE

ALL ELECTRICAL PENETRATIONS THROUGH THE ROOF SHEETING ARE TO BE IN LINE WITH THE STRUCTURAL OR MECHANICAL SERVICES PENETRATIONS TO AVOID DEDICATED FLASHINGS FOR THE ELECTRICAL SERVICES.



DETAIL
TYPICAL OUTLET MOUNTINGS
NOT TO SCALE



SCHEMATIC
RJ45 PINOUT CONFIGURATION
NOT TO SCALE

EQUIPMENT:

TEST - TEST PUSH BUTTON MOUNTED ON THE DISTRIBUTION BOARD ESCUTCHEON.

RESET - RESET PUSH BUTTON MOUNTED ON THE DISTRIBUTION BOARD ESCUTCHEON.

LAMP - AMBER TEST INDICATING LAMP MOUNTED ON THE DISTRIBUTION BOARD ESCUTCHEON.

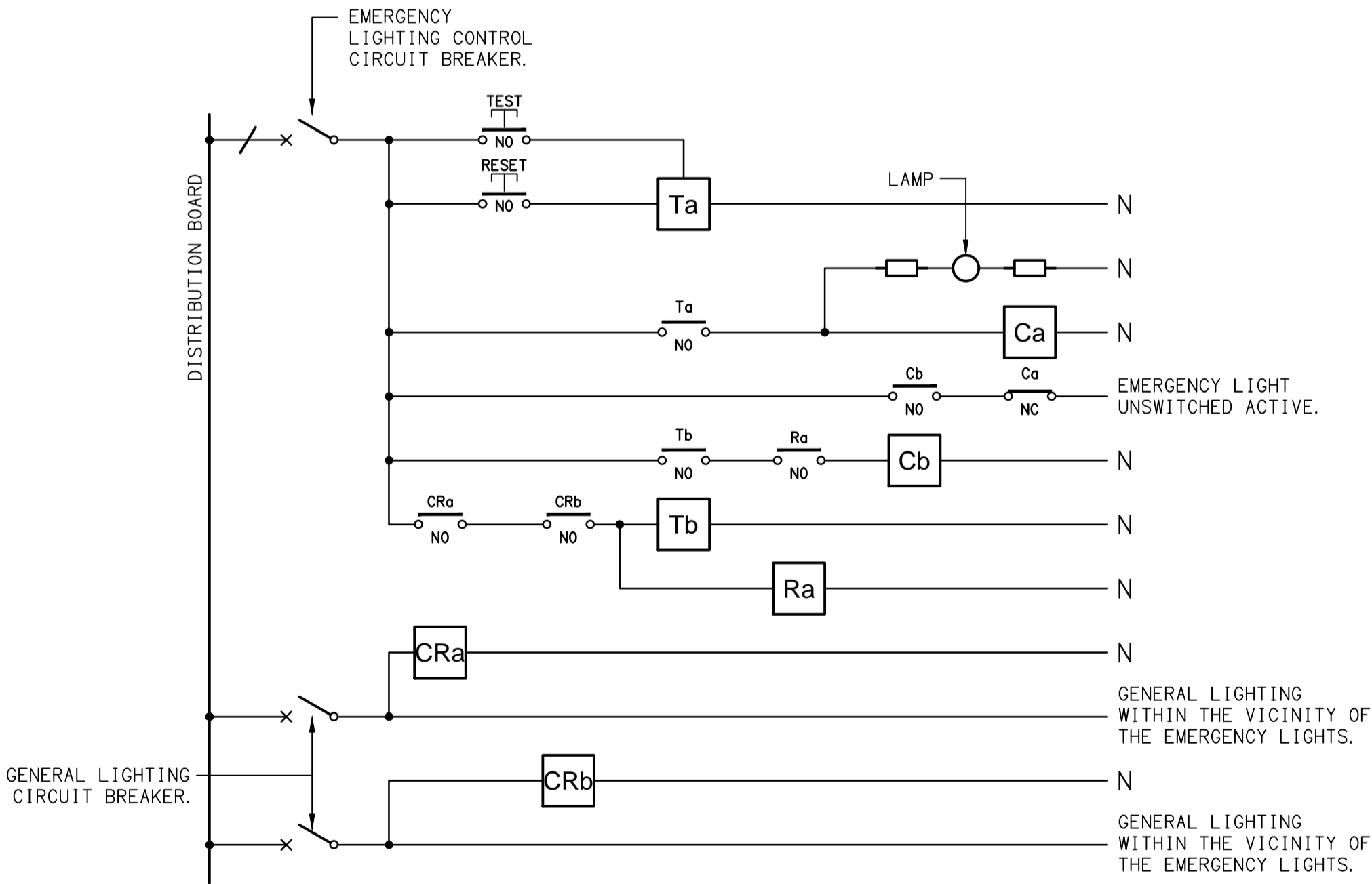
Ta - ADJUSTABLE 0-3 HOUR TIMED RELAY.

Tb - 15 MINUTE RUN-ON TIMER TO OPERATE UPON THE RETURN OF MAINS POWER.

Cx - CONTACTOR x.

CRx - CONTROL RELAY x.

Rx - RELAY x.



SCHEMATIC
EMERGENCY LIGHTING
NOT TO SCALE

NOTES

1. THE EMERGENCY LIGHT UNSWITCHED ACTIVE / GENERAL LIGHTING SWITCHED ACTIVE CIRCUIT ARRANGEMENT AND CONTROL IS TYPICAL FOR ALL CIRCUITS SUPPLYING EMERGENCY LIGHTS.

2. PROVIDE ADDITIONAL CONTROL RELAYS (CRx) CONFIGURED AS PER CRa AND CRb FOR ALL ADDITIONAL LIGHTING CIRCUITS THAT SUPPLY LIGHTS IN THE VICINITY OF THE EMERGENCY LIGHTS.

NOTES

1. EXTENT OF WORKS

THE ELECTRICAL SERVICES SUB-CONTRACT INCLUDES BUT IS NOT LIMITED TO THE FOLLOWING:
- SUPPLY AND INSTALLATION OF ALL COMPONENTS FORMING PART OF THE ELECTRICAL SERVICES.
- CO-ORDINATION.
- INSPECTIONS.
- TESTING AND COMMISSIONING.
- MAINTENANCE.
- CABLING, CABLE SUPPORT SYSTEMS AND ACCESS.
- POWER DISTRIBUTION.
- LIGHTING.
- COMMUNICATIONS CABLING.
- ELECTRONIC SECURITY.
- INTRUDER DETECTION.
- PA SYSTEM.
- MODIFICATION, RELOCATION AND EXTENSION AS NECESSARY OF ALL EXISTING SERVICES THAT ARE IMPACTED BY THE WORKS OR REQUIRED TO BE EXTENDED BY THE WORKS.
- REMOVAL OF ALL EXISTING SERVICES MADE REDUNDANT BY THE WORKS.
- DOCUMENTS.
- ANY TEMPORARY WORKS REQUIRED TO KEEP THE HOTEL OPERATING DURING THE CONSTRUCTION PROCESS AND ACCOMMODATE STAGING OF THE WORKS TO REFLECT THE EXECUTION OF THE MAIN CONTRACT WORKS.
- ALL MINOR COMPONENTS AND INCIDENTAL WORKS NOT SPECIFICALLY REFERRED TO, HOWEVER NECESSARY TO COMPLETE THE ELECTRICAL SERVICES INSTALLATION SUCH THAT IT IS HANDED OVER COMPLETE, OPERATIONAL AND FIT FOR THE INTENDED USE.

SUPPLY ALL LABOUR, MATERIALS, EQUIPMENT, AND ALL OTHER ITEMS, WHETHER MENTIONED IN DETAIL OR NOT, REQUIRED FOR THE SATISFACTORY COMPLETION OF THE ELECTRICAL SERVICES INSTALLATION, LEAVING IN FULL WORKING ORDER TO THE SATISFACTION OF THE PROJECT MANAGER.

ACCEPT FULL RESPONSIBILITY FOR LIASING, ARRANGING AND CO-ORDINATION OF ALL WORKS THAT HAVE AN EFFECT ON OR WILL BE AFFECTED BY THE ELECTRICAL SERVICES.

REFER TO THE EQUIPMENT SCHEDULE FOR ADDITIONAL REQUIREMENTS.

2. WORKMANSHIP

ENSURE THAT THE ELECTRICAL WORK IS PERFORMED BY THE HOLDER OF A CURRENT ELECTRICAL SUB CONTRACTOR LICENSE AND THE SERVICES COVERED BY THE ACMA IS PERFORMED BY THE HOLDER OF THE APPROPRIATE CURRENT ACMA LICENSE. ENSURE THE INSTALLATION AND ALL COMPONENTS, FIXTURES, FITTINGS, OUTLETS AND CABLES ARE SUPPLIED AND INSTALLED TO A HIGH STANDARD THROUGHOUT, AND INSTALLED IN A NEAT AND TRADESMAN LIKE MANNER, TO THE CURRENT INDUSTRY STANDARDS. ENSURE ALL MATERIALS AND COMPONENTS OF A SIMILAR TYPE ARE OF THE SAME MANUFACTURER AND INSTALLED IN A UNIFORM MANNER.

IT IS THE ELECTRICAL SUB CONTRACTOR'S RESPONSIBILITY TO ENSURE THAT THE INSTALLATION IS FIT FOR PURPOSE AND IS PROVIDED AS A COMPLETE WORKING INSTALLATION. IT IS THE ELECTRICAL SUB CONTRACTOR'S RESPONSIBILITY TO PROVIDE ALL COMPONENTS, FITTINGS, FIXTURES, SYSTEMS, PROGRAMMING ETC IRRESPECTIVE OF THE LEVEL DETAILED IN THE DOCUMENTS SUCH THAT THE INSTALLATION IS PROVIDED AS A COMPLETE WORKING INSTALLATION.

CONCEAL ALL WIRING AND CONDUITS. EXPOSED CABLING OR CONDUITS ARE GENERALLY NOT ACCEPTABLE. IT IS NOTED THAT CHASING AND REINSTATEMENT WILL BE REQUIRED. ENSURE ALL COMPONENTS, EQUIPMENT AND MATERIALS SUPPLIED ARE NEW, UNUSED, DESIGNED AND SELECTED TO ENSURE SATISFACTORY OPERATION UNDER VARYING ATMOSPHERIC, CLIMATIC, HUMID TROPICAL CONDITIONS WITHOUT DISTORTION AND DETERIORATION IN ANY PART AFFECTING EFFICIENCY AND RELIABILITY OF THE SYSTEMS. DESIGN AND SELECT ALL EQUIPMENT TO PROVIDE THE NECESSARY SAFETY TO HUMAN LIFE AND PROPERTY DURING OPERATION AND MAINTENANCE WITH PARTICULAR ATTENTION GIVEN TO ELECTRICAL SAFETY AND SEGREGATION PRECAUTIONS.

CHECK THE FINISHED PAINTWORK AROUND THE AREA OF EACH INSTALLATION AND TOUCH UP ALL DAMAGED PARTS AND FINISHES AFTER THE INSTALLATION OF THE ELECTRICAL SERVICES.

ALL WORKS ARE TO BE CARRIED OUT IN ACCORDANCE WITH THE BUILDER'S PROGRAM. ENSURE ALL FINAL LOCATIONS OF OUTLETS AND FITTINGS ARE CO-ORDINATED ONSITE WITH THE ARCHITECT AND ALL OTHER SERVICES, TO THE APPROVAL OF THE PROJECT MANAGER. ALLOW TO CO-ORDINATE THE FINAL LOCATION OF ALL EQUIPMENT, FITTINGS, & OUTLETS, SUCH THAT THEY ARE INSTALLED IN ACCORDANCE WITH THE AS3000 RESTRICTED ZONES, AND ARE NOT COVERED INAPPROPRIATELY.

ENSURE THAT ALL METAL SURFACES ARE SUITABLY PROTECTED AGAINST CORROSION, AND THAT ALL PLASTIC MATERIALS ARE UV STABILISED.

PROVIDE ALL MATERIALS AS NEW, AND OF THE HIGHEST CLASS AVAILABLE FOR THEIR RESPECTIVE TYPES. ENSURE ALL ASPECTS OF THE WORK ARE OF A HIGH STANDARD THROUGHOUT, AND INSTALLED IN A NEAT AND TRADESMAN LIKE MANNER, TO THE CURRENT INDUSTRY STANDARDS.

MODIFICATION, RELOCATION AND EXTENSION AS NECESSARY OF ALL EXISTING SERVICES THAT ARE IMPACTED BY THE WORKS OR REQUIRED TO BE EXTENDED BY THE WORKS.

PROVIDE ALL TEMPORARY WORKS REQUIRED TO KEEP THE VENUE AND ALL CONSTRUCTION STAGES OPERATING INCLUDING STAGED COMMISSIONING DURING THE CONSTRUCTION PROCESS.

ALL MINOR COMPONENTS AND INCIDENTAL WORKS NOT SPECIFICALLY REFERRED TO, HOWEVER NECESSARY TO COMPLETE THE ELECTRICAL SERVICES INSTALLATION SUCH THAT IT IS HANDED OVER COMPLETE, OPERATIONAL AND FIT FOR THE INTENDED USE.

CORRUGATED CONDUITS MUST NOT BE USED WITHIN ANY FOOD OR DRINK PREPARATION OR SERVERY AREAS.

CABLE JOINS ARE NOT ACCEPTABLE. ALL CABLING, WIRING, CONDUCTORS AND CONDUITS MUST BE CONCEALED. ALL EXISTING ELECTRICAL SERVICES INCLUDING CABLING AND SWITCHGEAR THAT IS FOUND TO BE REDUNDANT OR MADE REDUNDANT BY THE WORKS MUST BE REMOVED.

IT IS ACCEPTABLE TO USE EXISTING SWITCHGEAR, OUTLETS AND CABLING IF THEY ARE APPROPRIATELY RATED AND THE ELECTRICIAN ACCEPTS RESPONSIBILITY OVER THE SWITCHGEAR / OUTLETS / CABLE AND PROVIDES A WARRANTY OVER IT AS IF IT WAS INSTALLED NEW BY THE ELECTRICIAN.

3. STANDARDS

IRRESPECTIVE OF INFORMATION CONTAINED IN THE ELECTRICAL SERVICES DOCUMENTS OR IN INSTRUCTIONS, IT IS THE ELECTRICAL SUB CONTRACTORS RESPONSIBILITY TO ENSURE ALL ELECTRICAL SERVICES WORKS ARE INSTALLED IN ACCORDANCE WITH THE REQUIREMENTS OF THE FOLLOWING. REFER ANY DISCREPANCIES BETWEEN THE REQUIREMENTS OF THE FOLLOWING AND/OR THE ELECTRICAL SERVICES DOCUMENTS AND INSTRUCTIONS TO THE ARCHITECT FOR CLARIFICATION PRIOR TO THE PLACING OF ORDERS, FABRICATION OR INSTALLATION OF THE ITEMS/METHODS IN DISCREPANCY.
- NCC BUILDING CODE OF AUSTRALIA.
- ELECTRICITY ACT.
- ELECTRICAL SAFETY ACT.
- AS/NZS3000.
- AS3008.
- AS1670.1.
- QUEENSLAND FIRE DEPARTMENT.
- WORKPLACE HEALTH AND SAFETY ACT.
- TELECOMMUNICATIONS ACT.
- ACMA REQUIREMENTS.

4. CABLES

UNLESS OTHERWISE SPECIFIED, INSTALL AND TERMINATE CABLES IN ACCORDANCE WITH THE MANUFACTURERS' RECOMMENDATIONS. DETERMINE THE FINAL ROUTES TO SUIT THE BUILDING STRUCTURE AND SITE CONDITIONS. UNLESS NOTED OTHERWISE, PROVIDE ALL 240 VOLT POWER AND LIGHTING WIRING AS 2.5mm² TWIN & EARTH STRANDED COPPER CONDUCTORS, PVC INSULATED 0.6/1kV V75 GRADE TO AS3174, PROTECTED BY A 20 AMP CIRCUIT BREAKER. ALL CONDUIT AND FITTINGS TO BE RIGID UPVC TO AS2053, UNLESS NOTED OTHERWISE.

NOTES

5. POWER DISTRIBUTION

REPLACE THE EXISTING DISTRIBUTION BOARD DB-A. UTILISE THE EXISTING DB-A SUBMAIN TO SUPPLY THE NEW DISTRIBUTION BOARD. RESUPPLY ALL OF THE EXISTING DB-A CIRCUITS THAT REMAIN FROM THE NEW DISTRIBUTION BOARD WITH NEW AS3000 COMPLIANT SWITCHGEAR AND CONTROLS WITH THE SAME CAPACITY AND FEATURES AS THE EXISTING.

THE EXISTING MECHANICAL SERVICES AND HOT WATER CIRCUITS ARE TO BE RETAINED.

ALL OF THE EXISTING CIRCUITS, CABLING AND OUTLETS THAT BECOME REDUNDANT ARE TO BE REMOVED.

ALL SWITCHBOARDS AND SWITCHGEAR ARE TO BE SCHNEIDER OR NHP AND CONTAIN AT LEAST 25% OR 12 SPARE POLES (WHICHEVER IS THE LARGER) AT PRACTICAL COMPLETION. ALL SWITCHBOARDS ARE TO BE LIGHT GREY. ORANGE SWITCHBOARDS ARE NOT ACCEPTABLE. EXTERNAL SWITCHBOARDS MUST BE 316 STAINLESS STEEL OR ALUMINIUM. PROVIDE 92268 KEY LOCKABLE DOORS ON ALL SWITCHBOARDS. ALL SWITCHBOARDS AND CIRCUITS MUST BE UNIQUELY NAMED WITH SWITCHBOARDS PROVIDED WITH A LABEL CONTAINING:
- SOURCE NAME.
- SOURCE OVERLOAD RATING IN AMPS.
- SUBMAIN CABLE TYPE, SIZE, CONFIGURATION AND LENGTH.

ALL REMOVABLE PANELS AND ESCUTCHEONS MUST BE SECURED VIA 1/4 TURN LATCHES THAT REMAIN PART OF THE PANEL / ESCUTCHEON. IT IS NOT ACCEPTABLE TO SECURE REMOVABLE PANELS AND ESCUTCHEONS BY BOLTS, NUTS OR SCREWS.

ALL CIRCUIT BREAKERS AND CIRCUIT SCHEDULES MUST BE LABELLED / CONTAIN THE SUBMAIN / CIRCUIT USE AND LOCATION SUCH THAT THE CONNECTION / OUTLET CAN BE SIMPLY IDENTIFIED.

OUTLETS ARE TO BE PROVIDED WITH A NEAT HAND WRITTEN CIRCUIT DESIGNATION BY INDELIBLE INK ON THE FACEPLATE SUCH THAT IT IS NOT VISIBLE WHEN THE COVER IS CONCEALED.

THE POWER DISTRIBUTION COMPONENT OF THIS CONTRACT INCLUDES, BUT IS NOT LIMITED TO THE FOLLOWING EXTENT OF WORK:
- POWER DISTRIBUTION.
- REPLACE THE EXISTING DISTRIBUTION BOARD DB-A.
- CABLE ACCESS WAYS.
- CIRCUITS.
- ISOLATORS AND OUTLETS.
- TESTING AND COMMISSIONING.
- REMOVAL OF ALL EXISTING REDUNDANT SERVICES.
- RECONNECTION OF ALL EXISTING SERVICES THAT REMAIN.

REFER TO THE DISTRIBUTION BOARD SCHEDULES FOR ADDITIONAL REQUIREMENTS AND CIRCUIT DETAILS.

PROVIDE DISTRIBUTION BOARDS DB-A AS FOLLOWS:
- WALL MOUNTED.
- EACH CUBICAL IS TO HAVE A MINIMUM WIDTH OF 600MM.
- IP44 FORM 1.
- LIGHT GREY ENCLOSURE WHITE ESCUTCHEON.
- 3 POINT LOCKABLE HANDLES ON ALL DOORS.
- LIFT OFF HINGES ON ALL DOORS AND ESCUTCHEONS.
- 1/4 TURN LATCHES AND D HANDLES ON ALL ESCUTCHEONS.
- ALL SWITCHGEAR TO BE SCHNEIDER OR NHP/ TERASAKI.
- PROVIDE SHOP DRAWINGS FOR APPROVAL.
- 25% SPARE POLES AT PRACTICAL COMPLETION.
- ALL COMPONENTS ARE TO BE LABELLED WITH NON-STICK LABELS.

ENSURE ALL THREE PHASE CIRCUITS ARE PROVIDED WITH CORRECT PHASE ROTATION.

ENSURE ALL OUTLETS AND ISOLATORS ARE POSITIONED SUCH THAT THEY ARE NOT COVERED BY THE EQUIPMENT. THE FINAL POSITION OF ALL OUTLETS AND ISOLATORS ARE TO BE CONFIRMED ON SITE BY THE TENANTS REPRESENTATIVE.

6. LIGHTING

ALL OF THE LIGHT FITTINGS, LAMPS AND ACCESSORIES ARE TO BE PROVIDED AS PART OF THIS CONTRACT. THE LIGHTING COMPONENT OF THIS CONTRACT INCLUDES, BUT IS NOT LIMITED TO THE FOLLOWING EXTENT OF WORK:
- LIGHTING.
- LIGHT FITTINGS AND ACCESSORIES.
- LAMPS.
- EARTHING OF THE LIGHTING INSTALLATION.
- LIGHTING CONTROL.
- LIGHTING SUBCIRCUITS.
- EMERGENCY AND EXIT LIGHTING.
- TESTING AND COMMISSIONING.

7. EMERGENCY AND EXIT LIGHTING

PROVIDE A SINGLE POINT EMERGENCY LIGHTING SYSTEM THAT COMPLIES WITH THE LATEST ISSUE OF ALL PARTS AS2293 AND THE RELEVANT PARTS OF THE NCC BCA. INSTALL EMERGENCY LIGHT FITTINGS NOMINATED AS MAINTAINED WITH THE LAMP PERMANENTLY ON SUPPLIED VIA AN UNSWITCHED ACTIVE MAINS SUPPLY WHEN THE MAINS SUPPLY IS AVAILABLE. WHEN THE MAINS SUPPLY IS NOT AVAILABLE, THE LAMP IS TO REMAIN ON SUPPLIED BY THE EMERGENCY PACK. SINGLE LAMP MAINTAINED EMERGENCY LIGHTS ARE NOT SWITCHED WITH THE LOCAL GENERAL AREA LIGHTING. (THE LAMP IS ALWAYS ON.)

INSTALL EMERGENCY LIGHT FITTINGS NOMINATED AS NON-MAINTAINED AS FOLLOWS:
- IF THE FITTING IS NOT BEING SWITCHED, THE LAMP IS TO REMAIN OFF WHEN THE MAINS SUPPLY IS AVAILABLE. WHEN THE MAINS SUPPLY IS NOT AVAILABLE THE LAMP IS TO BE SWITCHED ON SUPPLIED BY THE EMERGENCY PACK. UNSWITCHED SINGLE LAMP NON-MAINTAINED EMERGENCY LIGHTS ARE NOT SWITCHED WITH THE LOCAL GENERAL AREA LIGHTING. (THE LAMP IS ON ONLY WHEN THE MAINS SUPPLY IS NOT AVAILABLE.)
- IF THE FITTING IS BEING SWITCHED, THE LAMP IS TO BE SUPPLIED AND CONTROLLED WITH THE LOCAL GENERAL AREA LIGHTING WHEN THE MAINS SUPPLY IS AVAILABLE. WHEN THE MAINS SUPPLY IS NOT AVAILABLE THE LAMP IS TO BE SWITCHED ON, SUPPLIED BY THE EMERGENCY PACK. (THE LAMP IS ON WHEN TURNED ON WITH THE LOCAL GENERAL LIGHTING OR THE MAIN SUPPLY IS NOT AVAILABLE.)

INSTALL EMERGENCY LIGHTS SUCH THAT THE STATUS INDICATOR L.E.D. IS CLEARLY VISIBLE AND THE TEST BUTTONS ARE READILY ACCESSIBLE. LABEL EACH CIRCUIT BREAKER WHICH CONTROLS THE UNSWITCHED ACTIVE TO EXIT LIGHTS WITH A LABEL FIXED ADJACENT; ENGRAVED PLASTIC LAMINATE, GREEN BACKGROUND WITH WHITE CHARACTERS: -

WARNING
INTERRUPTING SUPPLY WILL DISCHARGE
EMERGENCY LIGHTING BATTERIES

PROVIDE WRITTEN EVIDENCE OF THE INITIAL COMMISSIONING AND TESTING AND TESTING FOR THE DURATION OF THE MAINTENANCE PERIOD IN ACCORDANCE WITH AS 2293.2.

THIS EVIDENCE IS TO BE IN THE FORM OF A LOG BOOK SIMILAR TO THE GENERAL LIGHTING SERVICE PTY LTD "EMERGENCY LIGHTING MAINTENANCE LOG BOOK AND MANUAL" WHICH IS TO BE PROVIDED BY THE ELECTRICAL SUB-CONTRACTOR AND HAVE ALL ENTRIES FULLY COMPLETED AND BE PRESENTED FOR INSPECTION AT PRACTICAL COMPLETION. THE LOG BOOK IS TO BE RETAINED BY THE ELECTRICAL SUB-CONTRACTOR FOR THE DURATION OF THE MAINTENANCE PERIOD, AND THE SIX MONTHLY TEST AND MAINTENANCE RESULTS ENTERED. THE LOG BOOK IS TO BE PRESENTED FOR APPROVAL AT FINAL COMPLETION (EXPIRY OF THE MAINTENANCE PERIOD) AND WILL BE FORWARDED TO THE OPERATOR FOR THEIR USE.

PROVIDE MAINTENANCE OF THE EMERGENCY AND EXIT LIGHTING INSTALLATION INCLUDING RECORDS IN ACCORDANCE WITH THE LATEST ISSUE OF ALL PARTS AS2293 AND THE RELEVANT PARTS OF THE NCC BCA. PROVIDE THE EMERGENCY LIGHTING SYSTEM WITH A SUPPLY SENSING AND TESTING FACILITY IN ACCORDANCE WITH AS 2293.1.

NOTES

8. COMMUNICATIONS

QUEENSLAND DATA N ELECTRICAL SERVICES (07) 3889 7733 RORY CROSS 0411 704 385 roryc@1dada.com.au IS TO BE ENGAGED AS A NOMINATED SUBCONTRACTOR TO THE ELECTRICAL SUB-CONTRACTOR TO INSTALL THE COMMUNICATIONS CABLING. ALL OF THE EXISTING COMMUNICATION CABLES THAT BECOME REDUNDANT ARE TO BE REMOVED. THE COMMUNICATIONS CABLING COMPONENT OF THIS CONTRACT INCLUDES, BUT IS NOT LIMITED TO THE FOLLOWING EXTENT OF WORK:
- REMOVAL OF EXISTING REDUNDANT CABLING.
- NEW COMMUNICATIONS OUTLETS.
- PATCH PANELS WITHIN CR-A AS REQUIRED.
- TESTING AND COMMISSIONING.

9. ELECTRONIC SECURITY

A.B.C. ALARMS PTY. LTD. ANDRE CAFUN andrecafbcalarms.com.au PH (07) 3849 1939 MOB: 0408 917 505 IS TO BE ENGAGED AS A NOMINATED SUBCONTRACTOR TO THE ELECTRICAL SUB CONTRACTOR TO UNDERTAKE ALL WORKS ASSOCIATED WITH THE SECURITY SERVICES INCLUDING THE INTRUDER DETECTION, ACCESS CONTROL SYSTEMS, CCTV AND VIDEO INTERCOM. THE EXISTING SECURITY PANELS ARE TO BE RETAINED AND EXPANDED AS NECESSARY TO ACCOMMODATE THE NEW SECURITY SERVICES.

THE SECURITY COMPONENT OF THIS CONTRACT INCLUDES, BUT IS NOT LIMITED TO THE FOLLOWING EXTENT OF WORK:
- ACCESS CONTROL.
- EXPANDER PANELS.
- CARD READERS.
- ELECTRIC STIKES.
- CONCEALED DOOR CONTROLLERS.
- INTERFACE THE ACCESS CONTROL SYSTEM TO THE FIP TO UNLOCK THE AUTO DOOR UPON ALARM.
- REED SWITCHES.
- REMOVAL OF EXISTING REDUNDANT CABLING AND EXISTING COMPONENTS WITHIN THE SCOPE OF WORK.
- MODIFICATION OF ALL EXISTING EXPOSED SECURITY SERVICES WITHIN THE SCOPE OF THE WORKS SUCH THAT THEY ARE CONCEALED UNLESS SPECIFICALLY REQUIRED TO BE EXPOSED FOR THE OPERATION OF THE COMPONENT.
- TESTING AND COMMISSIONING.
THE EXISTING CABLING CAN BE REUSED IF IT IS IN APPROPRIATE CONDITION AND THE CONTRACTOR ASSUMES FULL WARRANTY OVER IT AS IF THEY HAVE INSTALLED IT AS PART OF THESE WORKS.

10. PA SYSTEM

A.B.C. ALARMS PTY. LTD. ANDRE CAFUN andrecafbcalarms.com.au PH (07) 3849 1939 MOB: 0408 917 505 IS TO BE ENGAGED AS A NOMINATED SUBCONTRACTOR TO THE ELECTRICAL SUB CONTRACTOR TO UNDERTAKE ALL WORKS ASSOCIATED WITH THE PA SYSTEM.

MODIFY THE EXISTING TERACOM TERR-EX IP-AUDIO SYSTEM TO SUPPLY ALL OF THE PA SYSTEM SPEAKERS.

THE PA CSYSTEM OMONENT OF THIS CONTRACT INCLUDES, BUT IS NOT LIMITED TO THE FOLLOWING EXTENT OF WORK:
- NEW SPEAKERS AND CABLING AS REQUIRED.
- REMOVAL OF EXISTING REDUNDANT PA SYSTEM CABLING WITHIN THE SCOPE OF THE WORKS.
- MODIFICATION OF ALL EXISTING EXPOSED PA SERVICES WITHIN THE SCOPE OF THE WORKS SUCH THAT THEY ARE CONCEALED UNLESS SPECIFICALLY REQUIRED TO BE EXPOSED FOR THE OPERATION OF THE COMPONENT.
- TESTING AND COMMISSIONING.

THE EXISTING CABLING AND SPEAKERS CAN BE REUSED IF IT IS IN APPROPRIATE CONDITION AND THE CONTRACTOR ASSUMES FULL WARRANTY OVER IT AS IF THEY HAVE INSTALLED IT AS PART OF THESE WORKS.

11. FIRE ALARM

FVS SERVICES GROUP, 1300 387 387, MARK WESTON, 0418 129 610, mark@fvs.com.au IS TO BE ENGAGED AS A NOMINATED SUBCONTRACTOR TO THE ELECTRICAL SUB CONTRACTOR TO UNDERTAKE ALL WORKS ASSOCIATED WITH THE PA FIRE ALARM SYSTEM. THE FIRE ALARM COMPONENT OF THIS CONTRACT IS TO INCLUDES AN AS1670.1 COMPLIANT ADDRESSABLE FIRE DETECTION AND ALARM SYSTEM CONNECTED TO THE SCHOOLS EXISTING BRIGADE MONITORED SYSTEM.

THE FIRE ALARM COMPONENT OF THIS CONTRACT IS TO INCLUDES, BUT IS NOT LIMITED TO THE FOLLOWING EXTENT OF WORK:
- FIRE INDICATOR PANEL.
- INTERFACE THE FIP TO THE ACCESS CONTROL SYSTEM TO UNLOCK THE ASSOCIATED DOORS UPON ALARM.
- SPEAKERS.
- ADDRESSABLE SMOKE DETECTORS.
- ADDRESSABLE THERMAL DETECTORS.
- ADDRESSABLE CONCEALED SPACE DETECTORS C/W REMOTE INDICATORS AND REMOTE ACCESS BRACKETS AS REQUIRED.
- CABLING.
- SYSTEM DIAGRAM.
- PROVISION OF ANY ADDITIONAL SPEAKERS TO ACHIEVE EVACUATION SOUND LEVELS WITH A MINIMUM OF 100B (A) ABOVE AMBIENT, AND NOT LESS THAN 65DB (A) AND NO MORE THAN 105DB (A).
- TESTING AND COMMISSIONING.
- LOG BOOK.
- MAINTENANCE DURING THE DEFECTS AND LIABIILITY PERIOD IN ACCORDANCE WITH MP6.1 OF THE QDC AND AS1851.
- PAY ALL COSTS ASSOCIATED WITH THE ISOLATION AND RECONNECTION OF THE BRIGADE MONITORING OF THE FIRE ALARM SYSTEM.

REMOVE ALL EXISTING REDUNDANT FIRE ALARM SERVICES.

THE CONTRACTOR IS RESPONSIBLE FOR PAYING ANY CALL OUT FEES ISSUED BY QFES THAT ARE THE RESULT OF DEFECTIVE WORKS, CABLING OR SYSTEM COMPONENTS

ENSURE ALL WORKS INSTALLED UNDER THE FIRE ALARM SYSTEM COMPONENT OF THE ELECTRICAL SUB-CONTRACT IS UNDERTAKEN BY, OR UNDER THE DIRECTION OF A SUITABLY QUALIFIED AND EXPERIENCED FIRE ALARM SYSTEM INSTALLER WHO HOLD THE REQUIRED QBCC AND FIRE PROTECTION CONTRACTORS REGISTRATION BOARD OF QUEENSLAND INC REGISTRATIONS.

NOTES

12. DOCUMENTATION

WITHIN TWO WEEKS OF PRACTICAL COMPLETION PROVIDE THE FOLLOWING DOCUMENTATION.

AS CONSTRUCTED DRAWINGS INCLUDING:
- ELECTRICIANS NAME AND CONTACT DETAILS.
- PROJECT NAME, ADDRESS AND DATE OF PRACTICAL COMPLETION.
- FITTING POSITIONS AND TYPES CROSS REFERENCED TO A FITTING / EQUIPMENT SCHEDULE.
- OUTLET, SWITCH, AND CONNECTION POSITIONS CROSS REFERENCED TO A FITTING / EQUIPMENT SCHEDULE.
- REMOTE DRIVER LOCATIONS.
- CIRCUITS CROSS REFERENCED TO A DISTRIBUTION BOARD SCHEDULE.
- LIGHTING CONTROL CHANNELS CROSS REFERENCED TO A LIGHTING CONTROL SCHEDULE.
- POWER SCHEMATIC.
- SWITCHBOARD SHOP DRAWINGS.
- CABLE ACCESS ROUTES.

A FITTING / EQUIPMENT SCHEDULE INCLUDING:
- FITTING DETAILS INCLUDING THE MANUFACTURERS CATALOGUE NUMBERS WITH THE TYPES CROSS REFERENCED TO THE AS CONSTRUCTED DRAWINGS.
- OUTLETS AND SWITCHES INCLUDING THE MANUFACTURERS CATALOGUE NUMBERS WITH THE TYPES CROSS REFERENCED TO THE AS CONSTRUCTED DRAWINGS.


DISTRIBUTION BOARD SCHEDULES CROSS REFERENCED TO THE AS CONSTRUCTED DRAWINGS.

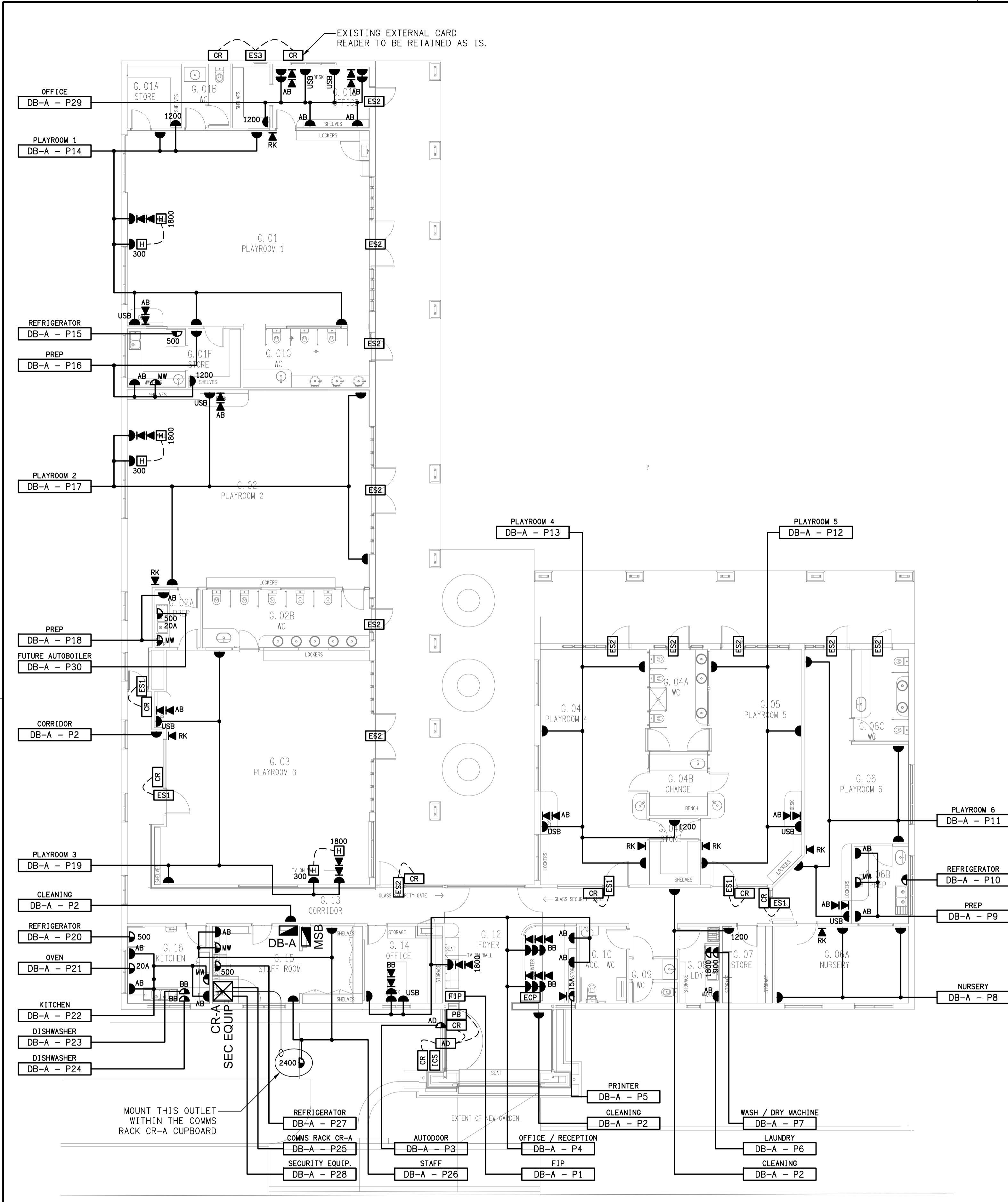
LIGHTING CONTROL SCHEDULE CROSS REFERENCED TO THE AS CONSTRUCTED DRAWINGS.

PHOTOS OF EACH SWITCHBOARD INCLUDING:
- CLOSED POSITION SUCH THAT THE SWITCHBOARD DESIGNATION AND CLEARANCE IS VISIBLE.
- THE SUBMAIN LABEL.
- DOOR/S OPEN ESCUTCHEON/S CLOSED SUCH THAT THE SPARE CAPACITY AND LABELLING IS VISIBLE.
- DOOR/S OPEN ESCUTCHEON/S REMOVED SUCH THAT THE SWITCHGEAR AND INTERNAL CABLING IS VISIBLE.

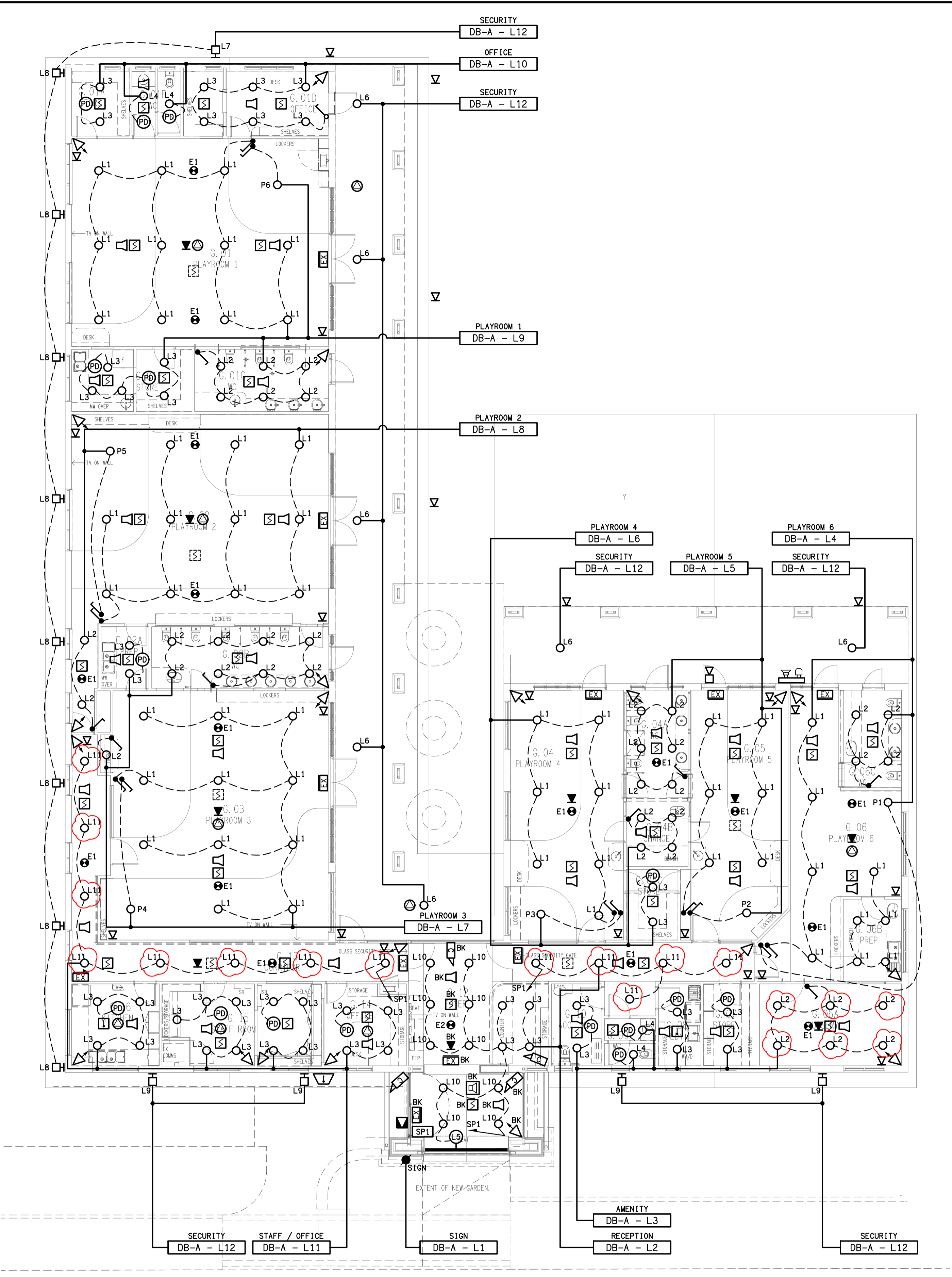
13. ABBREVIATIONS

A - AMP CURRENT RATING
AB - MOUNT ABOVE BENCH.
ADL - AUTO DOOR.
AFFL - ABOVE FINISHED FLOOR LEVEL.
BB - MOUNT BELOW BENCH.
BH - MOUNT ON BULKHEAD.
CEIL - MOUNT ON CEILING.
CS - MOUNT WITHIN CEILING SPACE.
C/W - COMPLETE WITH.
DW - DISHWASHER.
HWS - HOT WATER SYSTEM.
MCB - MINIATURE CIRCUIT BREAKER.
MSB - MAIN SWITCHBOARD.
MSSB - MECHANICAL SERVICES SWITCHBOARD.
MW - MICROWAVE.
N - NEON / LED INDICATOR WHEN ON.
NTS - NOT TO SCALE.
OV - OVEN.
RCBO - CIRCUIT PROTECTED VIA A 30mA RESIDUAL CURRENT DEVICE INTEGRAL TO THE CIRCUIT BREAKER. 3-PHASE RCBO TO BE 4-POLE.
REF - REFRIGERATOR.
RK - RECESS KIT.
SUS - MOUNT SUSPENDED FROM CEILING.
UNO - UNLESS NOTED OTHERWISE.
WP - WEATHERPROOF TO IP56 UNO.
500 - NUMBER DENOTES MOUNTING HEIGHT AFFL.

ELECTRICAL DESIGN GROUP BRISBANE PTY LTD ACN 092 710 793		THE COPYRIGHT OF THIS DRAWING REMAINS THE PROPERTY OF THE ELECTRICAL DESIGN GROUP.		 ELECTRICAL DESIGN GROUP ELECTRICAL BUILDING SERVICES CONSULTANTS BRISBANE GOLD COAST		PROJECT: ANGLICAN CHURCH GRAMMAR SCHOOL CHILDCARE		B CONSTRUCTION 20/10/2025 REV: DESCRIPTION: DATE:	
TRADING AS: ELECTRICAL DESIGN GROUP		USE FIGURED DIMENSIONS IN PREFERENCE TO SCALE.		P.O.Box 15, Sherwood Q.4075 Phone: (07) 3278 4375 Email: brisbane@edg.net.au Web: www.edg.net.au		DRAWING: ELECTRICAL SERVICES NOTES		SCALE: NOT TO SCALE AT A1	
ALL DIMENSIONS TO BE VERIFIED ONSITE.						PROJECT NO: C3592a		DRAWING NO: E02	
						OAKLANDS PARADE, EAST BRISBANE		REVISION: B	



FLOOR PLAN
CHILDCARE REFURBISHMENT
SCALE 1: 100



REFLECTED CEILING PLAN
CHILDCARE REFURBISHMENT
SCALE 1: 100