



# ELECTRICAL DESIGN GROUP

ELECTRICAL BUILDING SERVICES CONSULTANTS

P.O. Box 15, SHERWOOD Q. 4075

Phone: (07) 3278 4375

Website: [www.edg.net.au](http://www.edg.net.au) Email: [brisbane@edg.net.au](mailto:brisbane@edg.net.au)

C3609a - BURGER URGE - BURPENGARY EAST

C3609a-0001(D).xls

## ELECTRICAL SERVICES CONTRACT DOCUMENT SCHEDULE

REVISION D - 22 AUGUST 2025

ISSUING INFORMATION				DATE OF ISSUE							
	DAY	25	31	20	22						
	MONTH	07	07	08	08						
	YEAR	25	25	25	25						
REASON FOR ISSUE				P	P	T	T				
A = APPROVAL				C = CONSTRUCTION				N = COORDINATION			
				P = PRELIMINARY				T = TENDER			

DISTRIBUTION				NUMBER OF COPIES							
WWW.EDG.NET.AU				1E	1E	1E	1E				
BURGER URGE				1E	1E	1E	1E				
INASPACE ARCHITECTS				1E	1E	1E	1E				
P = PRINT				T = TRACING				D = DISC			
				E = EMAIL				F = FAX			

DOCUMENTS		REVISION									
C3609a-E01.dwg	LEGEND & DETAILS	A	B	C	D						
C3609a-E02.dwg	NOTES	A		B							
C3609a-E03.dwg	FLOOR PLAN	A	B	C							
C3609a-E04.dwg	REFLECTED CEILING PLAN	A	B	C	D						
C3609a-E05.dwg	DETAIL ELEVATIONS	A	B	C	D						
C3609a-E06.dwg	ROOF PLAN & DETAILS	A		B							
C3609a-0001.xls	CONTRACT DOCUMENT SCHEDULE	A	B	C	D						
C3609a-0002.xls	EQUIPMENT SCHEDULE		A	B	C						
C3609a-0004.xls	DISTRIBUTION BOARD DB-A SCHEDULE	A	B								



# ELECTRICAL DESIGN GROUP

ELECTRICAL BUILDING SERVICES CONSULTANTS

P.O. Box 15, SHERWOOD Q. 4075

Phone: (07) 3278 4375 Fax: (07) 3716 0222

Web Site: [www.edg.net.au](http://www.edg.net.au) Email: [brisbane@edg.net.au](mailto:brisbane@edg.net.au)

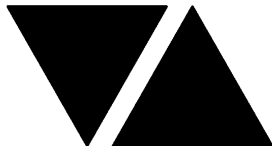
C3609a - BURGER URGE - BURPENGARY EAST

C3609a-0002(C).xls

## ELECTRICAL EQUIPMENT SCHEDULE

REVISION C - 22 AUGUST 2025

THE EQUIPMENT SUPPLIER CONTACT DETAILS MAY BE AVAILABLE ON THE EDG WEBSITE VIA THE FOLLOWING LINK <a href="http://www.edg.net.au/links.html">www.edg.net.au/links.html</a>					
TYPE	LAMPS	DESCRIPTION	COLOUR / ACCESSORY	CATALOGUE No	REV
L1	12W 3000K LED	RECESSED DOWNLIGHT C/W INTEGRAL DRIVER	BLACK	HAVIT LIGHTING HV5511T-BLK	A
L2	12W 3000K LED	RECESSED DOWNLIGHT C/W INTEGRAL DRIVER MOUNTED WITHIN THE SUSPENDED CEILING FEATURE	BLACK	HAVIT LIGHTING HV5511T-BLK	A
L3	30W 4000K LED	300 X 12000 BACK LITE FLAT PANEL C/W REMOTE DRIVER AND A PB RECESS KIT	WHITE	RAPID LED R3206-TRI- RM	A
L4	19.2W/M 4000K LED	LED STRIP MOUNTED UNDER THE KITCHEN SHELF C/W A REMOTE DRIVER. LOCATE THE DRIVER IN A REMOTE CONCEALED ACCESSIBLE POSITION NOTED ON THE AS CONSTRUCTED DOCUMENTS. MOUNT THE LED IN A RECESSED SCREW FIXED ALUMINIUM EXTRUSION C/W CONTINUOUS OPAL DIFFUSER. ENSURE ALL CABLING IS CONCEALED.	NATURAL ALUMINIUM OPAL DIFFUSER	HAVIT LIGHTING HV9735-IP20-240-4K - 19.2w + HV9695-2515 + POWER SUPPLY	A
L5	19.2W/M 3000K LED	LED STRIP MOUNTED IN THE FRONT OF THE SERVERY COUNTER C/W A REMOTE TE DIMMABLE DRIVER. LOCATE THE DRIVER IN A REMOTE CONCEALED ACCESSIBLE POSITION NOTED ON THE AS CONSTRUCTED DOCUMENTS. MOUNT THE LED IN A RECESSED SCREW FIXED ALUMINIUM EXTRUSION C/W CONTINUOUS OPAL DIFFUSER AS PER THE ARCHITECTURAL JOINERY DETAIL. ENSURE ALL CABLING IS CONCEALED.	BLACK ALUMINIUM OPAL DIFFUSER	HAVIT LIGHTING HV9735-IP20-240-3K - 19.2w + HV9695-2515- BLK + POWER SUPPLY	A
L6	19.2W/M 3000K LED	LED STRIP RECESSED INTO THE REAR SERVERY DISPLAY SHELVES C/W A REMOTE TE DIMMABLE DRIVER. LOCATE THE DRIVER IN A REMOTE CONCEALED ACCESSIBLE POSITION NOTED ON THE AS CONSTRUCTED DOCUMENTS. MOUNT THE LED IN A RECESSED SCREW FIXED ALUMINIUM EXTRUSION C/W CONTINUOUS OPAL DIFFUSER AS PER THE ARCHITECTURAL JOINERY DETAIL. REFER TO THE ELEVATION FOR THE EXTENT /NUMBER OF L6 STRIPS. ENSURE ALL CABLING IS CONCEALED. IT IS ACCEPTABLE TO HAVE A SINGLE DRIVER SUPPLY MULTIPLE LENGTHS OF L6 STRIP IF IT IS SUITABLY SIZED.	BLACK ALUMINIUM OPAL DIFFUSER	HAVIT LIGHTING HV9735-IP20-240-3K - 19.2w + HV9695-2515- BLK + POWER SUPPLY	A
L7	20W/M RGB LED	FEATURE RGB LED C/W REMOTE SET AND FORGET RGB CONTROLLER TO ALLOW THE COLOUR TO BE SELECTED ON SITE. REMOTE TE DIMMABLE DRIVER. LOCATE THE CONTROLLER AND DRIVER IN A REMOTE CONCEALED ACCESSIBLE POSITION NOTED ON THE AS CONSTRUCTED DOCUMENTS. MOUNT THE LED IN A RECESSED SCREW FIXED ALUMINIUM EXTRUSION C/W CONTINUOUS OPAL DIFFUSER AS PER THE ARCHITECTURAL JOINERY DETAIL. REFER TO THE ELEVATION FOR THE EXTENT OF THE L7 STRIP. ENSURE ALL CABLING IS CONCEALED.	BLACK ALUMINIUM OPAL DIFFUSER	HAVIT LIGHTING HV9761-IP20-840- RGBCW - 20w IP20 24v DC COB RGBCW LED Strip + HV9695-2515- BLK + POWER SUPPLY	A



# ELECTRICAL DESIGN GROUP

ELECTRICAL BUILDING SERVICES CONSULTANTS

P.O. Box 15, SHERWOOD Q. 4075

Phone: (07) 3278 4375 Fax: (07) 3716 0222

Web Site: [www.edg.net.au](http://www.edg.net.au) Email: [brisbane@edg.net.au](mailto:brisbane@edg.net.au)

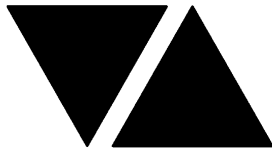
C3609a - BURGER URGE - BURPENGARY EAST

C3609a-0002(C).xls

## ELECTRICAL EQUIPMENT SCHEDULE

REVISION C - 22 AUGUST 2025

THE EQUIPMENT SUPPLIER CONTACT DETAILS MAY BE AVAILABLE ON THE EDG WEBSITE VIA THE FOLLOWING LINK <a href="http://www.edg.net.au/links.html">www.edg.net.au/links.html</a>					
TYPE	LAMPS	DESCRIPTION	COLOUR / ACCESSORY	CATALOGUE No	REV
L8	20W/M RGB LED	FEATURE RGB LED C/W REMOTE SET AND FORGET RGB CONTROLLER TO ALLOW THE COLOUR TO BE SELECTED ON SITE. REMOTE TE DIMMABLE DRIVER. LOCATE THE CONTROLLER AND DRIVER IN A REMOTE CONCEALED ACCESSIBLE POSITION NOTED ON THE AS CONSTRUCTED DOCUMENTS. MOUNT THE LED IN A RECESSED SCREW FIXED ALUMINIUM EXTRUSION C/W CONTINUOUS OPAL DIFFUSER AS PER THE ARCHITECTURAL JOINERY DETAIL. REFER TO THE ELEVATION FOR THE EXTENT OF THE L7 STRIP. ENSURE ALL CABLING IS CONCEALED.	BLACK ALUMINIUM OPAL DIFFUSER	HAVIT LIGHTING HV9761-IP20-840- RBCW - 20w IP20 24v DC COB RBCW LED Strip + HV9695-2515- BLK + POWER SUPPLY	C
LIGHTING CONTROL SWITCH PANEL (SP1)		MULTI GANG SWITCH PANEL CONFIGURED AS PER THE LIGHTING CONTROL SCHEMATIC. WALL MOUNTED AT 1000mm AFFL UNLESS NOTED OTHERWISE.	WHITE	CLIPSAL C2000 SERIES	A
CL1	2 X TRAILING EDGE DIMMABLE 240 VOLT 2700K LED B22 700 LUMENS +/- 10% 15,000 HOUR LIFE	SURFACE MOUNTED DOUBLE BUNKER LIGHT	BLACK	FAT SHACK VINTAGE DOUBLE BUNKER CAGE LIGHT SKU W017-BLK	A
PL1	2700K T8 LED	1200WIDE CHAIN SUSPENDED PENDANT	BLACK FITTING AND SUSPENSION	FAT SHACK VINTAGE SKU LP026	A
PL2	TRAILING EDGE DIMMABLE 240 VOLT 2700K B22 LED 150 LUMENS +/- 10% 15,000 HOUR LIFE	DECORATIVE PENDANT ALLOW TO ASSEMBLE AND INSTALL CONFIRM THE SUSPENSION HEIGHT ONSITE WITH THE ARCHITECT	BLACK	FAT SHACK VINTAGE SKU P531-BLK	A
DRL	TRAILING EDGE DIMMABLE 240 VOLT 3000K 8W LED	ADJUSTABLE 24DEG TRACK LIGHT ON A SUSPENDED TACK	BLACK SUSPENSION BLACK TRACK BLACK FITTINGS	ABOUT SPACE GUN LIGHT PLUS TRACK	
WL1	TRAILING EDGE DIMMABLE 240 VOLT 2700K B22 LED 150 LUMENS +/- 10% 15,000 HOUR LIFE	WALL LIGHT MOUNTED LIGHT AS PER THE ARCHITECTURAL ELEVATION	BLACK	FAT SHACK VINTAGE SKU W101-BLK	A
WL2	5 x TRAILING EDGE DIMMABLE 240 VOLT 2700K B22 LED 150 LUMENS +/- 10% 15,000 HOUR LIFE	FIVE LAMP WALL LIGHT MOUNTED LIGHT AS PER THE ARCHITECTURAL ELEVATION	BLACK	FAT SHACK VINTAGE SKU W100-KIT	A
FL1	4W ST58 CLEAR 2200K	24 VOLT FESTOON LIGHT C/W 500 SPACED LAMPS AND A TE DIMMABLE POWER SUPPLY LOCATED IN A REMOTE CONCEALED ACCESSIBLE POSITION NOTED ON THE AS CONSTRUCTED DOCUMENTS	BLACK CABLE AND FIXINGS	FESTOON HOUSE SKU: SV-FST-BLK- 30/60-FWW-KIT-Y	A



# ELECTRICAL DESIGN GROUP

ELECTRICAL BUILDING SERVICES CONSULTANTS

P.O. Box 15, SHERWOOD Q. 4075

Phone: (07) 3278 4375 Fax: (07) 3716 0222

Web Site: [www.edg.net.au](http://www.edg.net.au) Email: [brisbane@edg.net.au](mailto:brisbane@edg.net.au)

C3609a - BURGER URGE - BURPENGARY EAST

C3609a-0002(C).xls

## ELECTRICAL EQUIPMENT SCHEDULE

REVISION C - 22 AUGUST 2025

THE EQUIPMENT SUPPLIER CONTACT DETAILS MAY BE AVAILABLE ON THE EDG WEBSITE VIA THE FOLLOWING LINK <a href="http://www.edg.net.au/links.html">www.edg.net.au/links.html</a>					
TYPE	LAMPS	DESCRIPTION	COLOUR / ACCESSORY	CATALOGUE No	REV
E1	LED	EMERGENCY LIGHT: RECESSED NON-MAINTAINED EMERGENCY LIGHT. AS2293 CLASSIFICATION C0-D40 - C90-D40.	WHITE	CLEVERTRONICS LLIFE	A
E2	LED	EMERGENCY LIGHT: RECESSED NON-MAINTAINED EMERGENCY LIGHT. AS2293 CLASSIFICATION C0-D40 - C90-D40.	BLACK	CLEVERTRONICS LLIFEBLK	A
EX	LED	EXIT LIGHT: MAINTAINED 24M VIEWING DISTANCE EXIT LIGHT C/W DIFFUSERS & DIRECTIONAL ARROWS AS SHOWN. CEILING SURFACE MOUNT OR WALL MOUNT BETWEEN 2100mm & 2700mm AFFL IF THERE IS NO VERTICAL SURFACE TO MOUNT THE FITTING ON WITHIN THIS RANGE CONFIRM THE MOUNTING HEIGHT WITH THE ENGINEER. AS2293 CLASSIFICATION C0-D1.25- C90-D2	WHITE UNLESS NOTED AS BK THEN BLACK BODY	CLEVERTRONICS LUBPRO-SM	A
CEILING SPEAKER		BLACK RECESSED CEILING SPEAKER			B
WALL MOUNTED SPEAKER		BLACK WALL MOUNTED SPEAKER			B
PASS THROUGH HEAT LAMP (HTL)		CONNECT THE PASS THROUGH HEAT LAMP PROVIDED AS PART OF THE KITCHEN FABRICATION. CONTROL THE SUPPLY T THE PASS THROUGH HEAT LAMP VIA A LOCAL MANUAL SWITCH			A
ONE-WAY SWITCH		ONE-WAY SWITCH C/W CIRCUIT IDENTIFICATION ON THE FACEPLATE BEHIND THE SURROUND MOUNTED AT 1000mm AFFL UNLESS NOTED OTHERWISE.	WHITE	CLIPSAL C2000 SERIES 30USM	A
LIGHTING CONTROL SWITCH PANEL (SPx)		MULTIGANG SWITCH PANEL AS PER THE LIGHTING CONTROL SCHEMATIC / ELEVATION MOUNTED AT 1000mm AFFL UNLESS NOTED OTHERWISE.	WHITE	CLIPSAL C2000 SERIES 30USM	A
PROXIMITY DETECTOR SWITCH (PD)		ADJUSTABLE FLUSH RECESSED 360 DEGREE PIR PRESENCE DETECTOR TO OPERATE THE ASSOCIATED LIGHTS FOR A PRE-SET AMOUNT OF TIME. ADJUST THE TIME AND SENSITIVITY ON SITE AS DIRECTED BY THE ENGINEER. SUBMIT DETAILS OF THE MOVEMENT DETECTOR SWITCH FOR APPROVAL PRIOR TO ORDERING	WHITE	CLIPSAL	A
TRAILING EDGE POT DIMMER (TE)		MANUAL 400W PHASE CUT DALI LIGHT SWITCH / POT DIMMER MOUNTED AS PER THE LIGHTING CONTROL SCHEMATIC AND ELEVATION.	WHITE	CLIPSAL C2000 SERIES	A
SIGN CONNECTION		COORDINATE THE LOCATION AND CONNECTION WITH THE SIGN CONTRACTOR ENSURING THE GPO / ISOLATORS ARE PROVIDED WITH APPROPRIATE WEATHER PROTECTION AND ARE CONCEALED FROM VIEW.			A



# ELECTRICAL DESIGN GROUP

ELECTRICAL BUILDING SERVICES CONSULTANTS

P.O. Box 15, SHERWOOD Q. 4075

Phone: (07) 3278 4375 Fax: (07) 3716 0222

Web Site: [www.edg.net.au](http://www.edg.net.au) Email: [brisbane@edg.net.au](mailto:brisbane@edg.net.au)

C3609a - BURGER URGE - BURPENGARY EAST

C3609a-0002(C).xls

## ELECTRICAL EQUIPMENT SCHEDULE

REVISION C - 22 AUGUST 2025

THE EQUIPMENT SUPPLIER CONTACT DETAILS MAY BE AVAILABLE ON THE EDG WEBSITE VIA THE FOLLOWING LINK <a href="http://www.edg.net.au/links.html">www.edg.net.au/links.html</a>					
TYPE	LAMPS	DESCRIPTION	COLOUR / ACCESSORY	CATALOGUE No	REV
SPECIAL POWER OUTLET		SPECIAL PURPOSE POWER OUTLET RATING AND CONFIGURATION AS NOTED MOUNT AT 300 AFFL UNLESS NOTED OTHER WISE			A
SINGLE POWER OUTLET		SINGLE POWER OUTLET C/W CIRCUIT IDENTIFICATION ON THE FACEPLATE BEHIND THE SURROUND MOUNT ABOVE BENCH U.N.O.	WHITE	CLIPSAL C2000 SERIES	A
DOUBLE POWER OUTLET		DOUBLE POWER OUTLET C/W CIRCUIT IDENTIFICATION ON THE FACEPLATE BEHIND THE SURROUND MOUNT ABOVE BENCH U.N.O.	WHITE	CLIPSAL C2000 SERIES	A
IP56 OUTLETS		PROVIDE OUTLETS ANNOTATED AS IP56 AS CLIPSAL I56 SERIES GREY OUTLETS C/W INTEGRAL SWITCH			A
REFRIGERATION ISOLATION PANELS		PROVIDE PLYWOOD MOUNTING PANELS WITHIN THE CEILING SPACE ABOVE THE COOL ROOM / FREEZER ACCESS PANELS C/W ISOLATION SWITCHES AND LIGHTING AS PER THE REFRIGERATION ISOLATOR PANEL DETAILS. CIRCUIT EACH ISOLATOR AS INDICATED. CONNECTION OF THE ISOLATOR TO THE REFRIGERATION EQUIPMENT WILL BE BY THE REFRIGERATION SUB CONTRACTOR			A
CH x1		CONTROL CHANNEL WITH A NUMERICAL REFERENCE. REFER TO THE POWER AND LIGHTING CONTROL SCHEMATIC			A
DB-x - Py		CIRCUIT DESIGNATION DENOTES DB AND CIRCUIT. ALL CIRCUITS ARE TO BE RUN IN 2.5mmSQR Cu STRANDED TPS AND PROTECTED BY A 20 AMP MINIATURE CIRCUIT BREAKER UNLESS NOTED OTHERWISE.			A
DOUBLE POWER OUTLET (USB)		DOUBLE POWER OUTLET C/W USB CHARGER AND CIRCUIT IDENTIFICATION ON THE FACEPLATE BEHIND THE SURROUND MOUNT ABOVE BENCH RATING 10A U.N.O. SUBMIT DETAILS OF THE OUTLET FOR APPROVAL.	WHITE	CLIPSAL 2000 SERIES + 30USBAM MECH	A
WEATHERPROOF GPO (WP)		IP54 WEATHERPROOF SINGLE / DOUBLE GPO AS NOTED ON DRAWING C/W COVER FLAP OVER SOCKET. MOUNT AT MINIMUM 1100mm AFFL U.N.O. RATING 10A U.N.O.	-	CLIPSAL WSCF227F	A
SINGLE-PHASE ISOLATOR		SINGLE-PHASE WEATHERPROOF ISOLATOR. MOUNT AT 1350mm AFFL U.N.O. RATING 20A U.N.O. CONNECT TO EQUIPMENT VIA FLEXIBLE CONDUIT.	-	CLIPSAL WHT20	A
THREE-PHASE ISOLATOR		THREE-PHASE WEATHERPROOF ISOLATOR. MOUNT AT 1350mm AFFL U.N.O. RATING 20A U.N.O. CONNECT TO EQUIPMENT VIA FLEXIBLE CONDUIT. "RSD" DENOTES ROLLER SHUTTER DOOR SUPPLY - COORDINATE LOCATION ONSITE WITH MOTOR.	-	CLIPSAL WHT35	A
COMMUNICATIONS RACK CR-A		PROVIDE CR-A AS A 24 RU 800 DEEP HINGED WALL MOUNTED RACK WITH FRONT AND REAR VERTICAL 19INCH MOUNTING RAILS. MOUNT THE RAT AT HIGH LEVEL. PROVIDE THE ARCH WITH A 19 INCH MOUNTED 10 PORT POWER RAIL CONNECTED TO THE RACK GPO. ENSURE THE RACK GPO IS COVERED WITHIN THE RACK WHEN THE RACK IS CLOSED. PROVIDE THE RACK WITH LOCKABLE VENTILATED SIDES AND DOOR AS WELL AS TWO TOP LID MOUNTED TEMPERATURE CONTROLLED VENTILATION FANS. PROVIDE THE RACK WITH A FOBOT, CAT 6 CCTV PATCH PANEL, COMMUNICATIONS CAT 6 PATCH PANEL. 19 INCH MOUNT THE AV AMPLIFIER AND CCTV NVR WITHIN THE RACK. PROVIDED DETAILS OF THE RACK FOR APPROVAL PRIOR TO ORDERING.			A



# ELECTRICAL DESIGN GROUP

ELECTRICAL BUILDING SERVICES CONSULTANTS

P.O. Box 15, SHERWOOD Q. 4075

Phone: (07) 3278 4375 Fax: (07) 3716 0222

Web Site: [www.edg.net.au](http://www.edg.net.au) Email: [brisbane@edg.net.au](mailto:brisbane@edg.net.au)

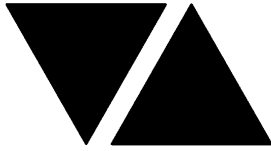
C3609a - BURGER URGE - BURPENGARY EAST

C3609a-0002(C).xls

## ELECTRICAL EQUIPMENT SCHEDULE

REVISION C - 22 AUGUST 2025

THE EQUIPMENT SUPPLIER CONTACT DETAILS MAY BE AVAILABLE ON THE EDG WEBSITE VIA THE FOLLOWING LINK <a href="http://www.edg.net.au/links.html">www.edg.net.au/links.html</a>					
TYPE	LAMPS	DESCRIPTION	COLOUR / ACCESSORY	CATALOGUE No	REV
COMMUNICATIONS OUTLET		RJ45 CAT-6 COMMUNICATIONS OUTLET, CABLED BACK TO A PATCH PANEL IN CR-A VIA 4-PAIR CAT-6 UTP CABLE. MOUNT UP TO 3 RJ45 OUTLETS PER MULTI-GANG FACEPLATE WITH SEPARATE PERMANENT LABELLING FOR EACH OUTLET. MOUNT ABOVE BENCH UNLESS NOTED OTHERWISE	WHITE UNLESS NOTED AS BLACK	CLIPSAL C2000 SERIES	A
NTD		REPLACE THE EXISTING NBN COMPLIANT NETWORK TERMINATION DEVICE WITH A RACK MOUNTED NBN NETWORK TERMINATION DEVICE MOUNTED WITHIN CR-A. ALLOW FOR THE DROP CABLE TO BE REDIRECTED / EXTENDED / REPLACED TO THE NEW NTD.			A
HDMI LINK CABLE TYPE 1 (H1)		PROVIDE THE HDMI TYPE 1 LINK AS A FACTORY TERMINATED HDMI 2.0 CABLE RUNNING BETWEEN THE POINTS INDICATED. PROVIDE 1M SLACK IN THE CABLE AT EACH END TO ALLOW CONNECTION TO THE ACTIVE EQUIPMENT. PROVIDE A WHITE TRADER COBRUSH FACEPLATE AT EACH HDMI POINT TO FACILITATE THE HDMI CABLES ENTERING THE WALL CAVITY.			A
HDMI LINK CABLE TYPE 2 (H2)		PROVIDE HDMI TYPE 2 LINK AS ACTIVE HDMI 2.0 TO FIBRE CONVERTERS CONNECTED BY A SINGLE CORE SIMPLEX LC OM3 FIBRE RUNNING BETWEEN THE POINTS INDICATED. PROVIDE 1M SLACK IN THE CABLE AT EACH END TO ALLOW CONNECTION TO THE ACTIVE EQUIPMENT. PROVIDE A WHITE TRADER COBRUSH FACEPLATE AT THE PROJECTOR POSITION AND AT THE RACK TO FACILITATE THE CABLE ENTERING THE CEILING / WALL CAVITY. EQUAL TO LINDY 38392			A
DB-A		UPGRADE THE EXISTING DISTRIBUTION BOARD DB-A AS NECESSARY TO ACCOMMODATE THE CIRCUITS AS DETAILED ON THE DISTRIBUTION BOARD SCHEDULE.			A
CONTACTOR		PROVIDE ALL CONTACTORS AS HEAVY DUTY MOTOR START TYPE.			A
RELAY		CONTROL RELAY.			A
SECURITY EQUIPMENT		SECURITY SYSTEM PANELS			A
SECURITY INTRUDER DETECTOR		DUAL-TECHNOLOGY MOVEMENT DETECTORS WALL MOUNTED AS PER THE MANUFACTURER'S SPECIFICATION. CONNECT TO THE LOCAL SECURITY EQUIPMENT WITH ONE DETECTOR PER ZONE. PROGRAM THE SECURITY SYSTEM AS REQUIRED TO ACCOMMODATE THE NEW DETECTORS AND CHANGES TO THE SATISFACTION OF THE OPERATOR. SUBMIT DETAILS OF THE DETECTORS INCLUDING THE MOUNTING ARRANGEMENTS FOR APPROVAL PRIOR TO ORDERING.			A
SECURITY PIEZO		CEILING FLUSH RECESSED WHITE SECURITY PIEZO SIREN.			A
SECURITY REED SWITCH		SECURITY FLUSH DOOR / GATE REED SWITCH ALL CABLING AND ASSOCIATED CONDUIT TO BE CONCEALED. CONNECT TO THE LOCAL SECURITY EQUIPMENT WITH EACH DOOR / SET OF DOORS CONFIGURED AS A SINGLE ZONE. PROGRAM THE SECURITY SYSTEM AS REQUIRED TO ACCOMMODATE THE NEW REED SWITCHES AND CHANGES TO THE SATISFACTION OF THE OPERATOR.			A
SECURITY KEY PAD (KP)		SECURITY ARMING / DISARMING LCD DISPLAY KEY PAD MOUNTED AT 1000AFL			A
CCTV CAMERA INTERNAL POSITIONS		SURFACE MOUNTED COLOUR FIXED TURRET CAMERA CABLED TO A CAT 6 CAMERA PATCH PANEL IN CR-A VIA 4-PAIR CAT-6 UTP CABLE.	WHITE	EQUAL TO HIKVISION DS-2CD2347G2-L	A



# ELECTRICAL DESIGN GROUP

ELECTRICAL BUILDING SERVICES CONSULTANTS

P.O. Box 15, SHERWOOD Q. 4075

Phone: (07) 3278 4375 Fax: (07) 3716 0222

Web Site: [www.edg.net.au](http://www.edg.net.au) Email: [brisbane@edg.net.au](mailto:brisbane@edg.net.au)

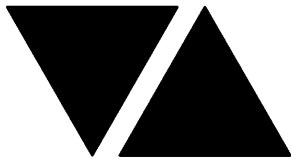
C3609a - BURGER URGE - BURPENGARY EAST

C3609a-0002(C).xls

## ELECTRICAL EQUIPMENT SCHEDULE

REVISION C - 22 AUGUST 2025

THE EQUIPMENT SUPPLIER CONTACT DETAILS MAY BE AVAILABLE ON THE EDG WEBSITE VIA THE FOLLOWING LINK <a href="http://www.edg.net.au/links.html">www.edg.net.au/links.html</a>					
TYPE	LAMPS	DESCRIPTION	COLOUR / ACCESSORY	CATALOGUE No	REV
CCTV CAMERA EXTERNAL POSITIONS		SURFACE MOUNTED IR FIXED TURRET CAMERA CABLED TO A CAT 6 CAMERA PATCH PANEL WITHIN CR-A VIA 4-PAIR CAT-6 UTP CABLE.	WHITE	EQUAL TO HIKVISION DS-2CD2345G0P-I	A



# ELECTRICAL DESIGN GROUP

ELECTRICAL BUILDING SERVICES CONSULTANTS

P.O. Box 15, SHERWOOD Q. 4075

Phone: (07) 3278 4375 Fax: (07) 3716 0222

Web Site: [www.edg.net.au](http://www.edg.net.au) Email: [brisbane@edg.net.au](mailto:brisbane@edg.net.au)

C3609a - BURGER URGE - BURPENGARY EAST

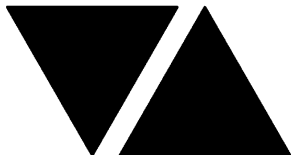
C3609a-0004(B).xls

DISTRIBUTION BOARD DB-A

REVISION B - 31 JULY 2025

							REV
MODIFY THE EXISTING DB TO ACCOMMODATE THE FOLLOWING CIRCUITS. PROVIDE ALL NECESSARY SWITCHGEAR AND CONTROLS. ACCURATELY LABEL EACH CIRCUIT BREAKER WITH THE USE AND THE POSITION.							A
CIRC	PH	CIRCUIT BREAKER (amps)	CONTROL EQUIPMENT	CABLE SIZE ( mm2 )	LOCATION	CIRCUIT USE	
P1	1	20	RCBO	2.5	OUTDOOR DINING	PROJECTOR	A
P2	1	20	RCBO	2.5	KITCHEN	SECURITY	A
P3	3	20	RCBO	2.5	KITCHEN	CR-A	A
P4	1	20	RCBO	2.5	KITCHEN	OFFICE	A
P5	1	20	RCBO	2.5	SERVERY	HEATED SHELF	A
P6	1	20	RCBO	2.5	SERVERY	FREEZER	A
P7	1	20	RCBO	2.5	SERVERY	GPO	A
P8	1	20	RCBO	2.5	SERVERY	REF	A
P9	1	20	RCBO	2.5	SERVERY	BEER CHILLER	A
P10	1	20	RCBO	2.5	SERVERY / KITCHEN	POS / GAS CONTROL	A
P11	1	20	RCBO	2.5	SERVERY	GLASS WASHER	A
P12	1	20	RCBO	2.5	SERVERY	TV	A
P13	1	20	RCBO	2.5	KITCHEN	DISHWASHER	A
P14	1	20	RCBO	2.5	KITCHEN	ICE MACHINE	A
P15	3	20	RCBO	2.5	COOL ROOM CS	HOT WATER	A
P16	1	20	RCBO	2.5	KITCHEN	BUN OVEN	A
P17	1	20	RCBO	2.5	KITCHEN	REF	A
P18	1	20	RCBO	2.5	KITCHEN	MICROWAVE	A
P19	1	20	RCBO	2.5	KITCHEN	WARMING DRAW	A
P20	1	20	RCBO	2.5	KITCHEN	CHIP DUMP	A
P21	1	20	RCBO	2.5	KITCHEN	REF	A
P22	1	20	RCBO	2.5	KITCHEN	GAS STARTERS	A
P23	1	20	RCBO	2.5	KITCHEN	REF	A
P24	1	20	RCBO	2.5	KITCHEN	SCREENS	A
P25	1	20	RCBO	2.5	KITCHEN	HEAT LAMPS	A
P26	1	20	RCBO	2.5	COOL ROOM CS	FREEZER CONTROL	A
P27	1	20	RCBO	2.5	COOL ROOM CS	FREEZER EXPLOSION HEATER	A
P28	1	20	RCBO	2.5	COOL ROOM CS	FREEZER DOOR FRAME HEATER	A
P29	1	20	RCBO	2.5	COOL ROOM CS	FREEZER FLOOR HEATER	A
P30	1	20	RCBO	2.5	COOL ROOM CS	FREEZER COND DRAIN HEATER	A
P31	1	20	RCBO	2.5	COOL ROOM CS	FREEZER DEFROST HEATER	A
P32	1	20	RCBO	2.5	COOL ROOM CS	FREEZER FASCIA	A
P33	1	20	RCBO	2.5	COOL ROOM CS	COOL RM CONTROLLER	A
P34	1	20	RCBO	2.5	COOL ROOM CS	COOL RM DOOR FRAME HEATER	A
P35	1	20	RCBO	2.5	COOL ROOM CS	COOL RM FASCIA	A
P36	1	20	RCBO	2.5	ROOF	COOL ROOM COMPRESSOR	A
P37	1	20	RCBO	2.5	ROOF	FREEZER COMPRESSOR	A
P38	1	20	RCBO	2.5	ROOF	SUPPLY AIR FAN	A
P39	3	20	RCBO	2.5	ROOF	EXHAUST FAN	A





# ELECTRICAL DESIGN GROUP

ELECTRICAL BUILDING SERVICES CONSULTANTS

P.O. Box 15, SHERWOOD Q. 4075

Phone: (07) 3278 4375 Fax: (07) 3716 0222

Web Site: [www.edg.net.au](http://www.edg.net.au) Email: [brisbane@edg.net.au](mailto:brisbane@edg.net.au)

C3609a - BURGER URGE - BURPENGARY EAST

C3609a-0004(B).xls

DISTRIBUTION BOARD DB-A

REVISION B - 31 JULY 2025

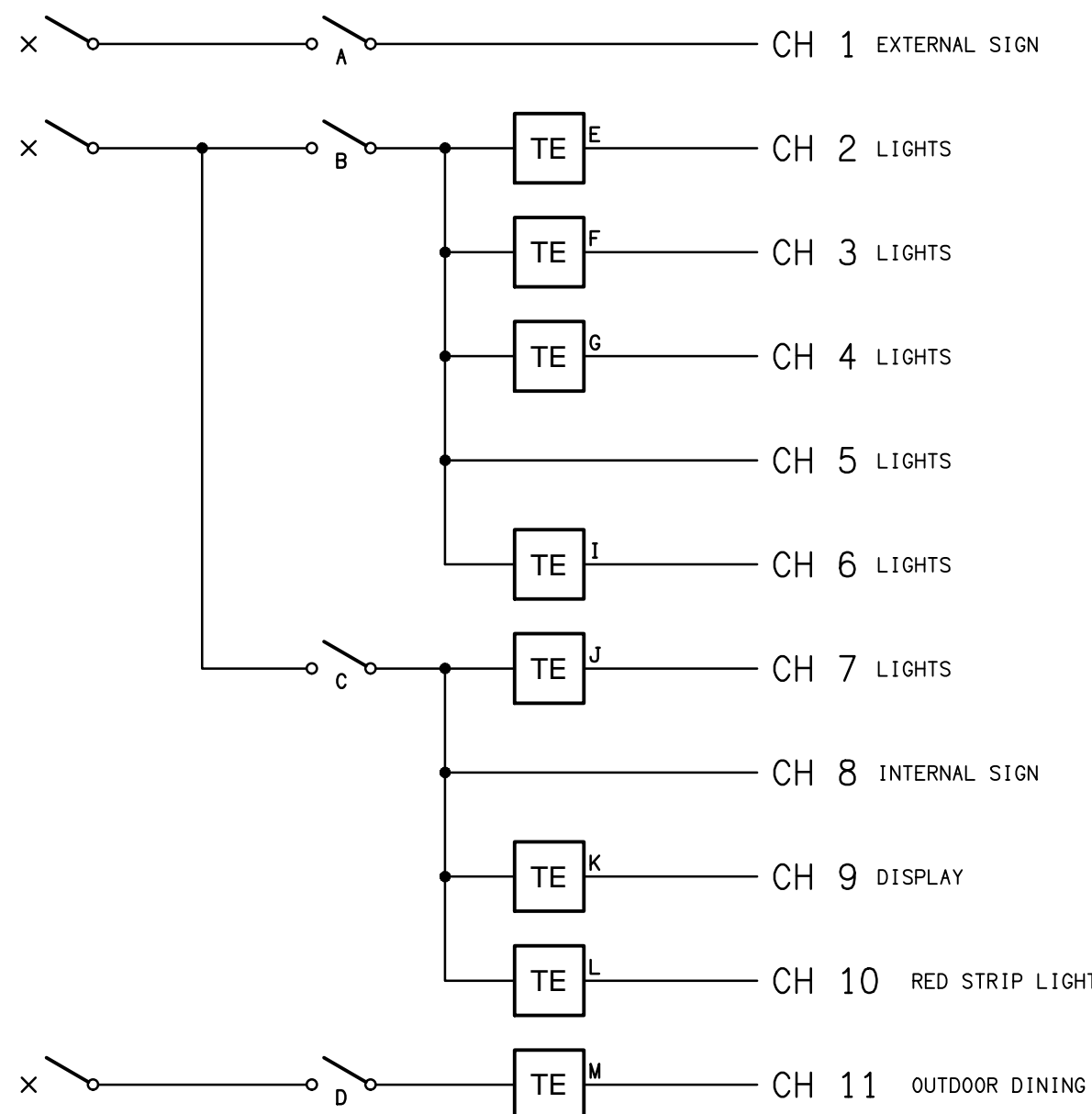
							REV
MODIFY THE EXISTING DB TO ACCOMMODATE THE FOLLOWING CIRCUITS. PROVIDE ALL NECESSARY SWITCHGEAR AND CONTROLS. ACCURATELY LABEL EACH CIRCUIT BREAKER WITH THE USE AND THE POSITION.							A
CIRC	PH	CIRCUIT BREAKER (amps)	CONTROL EQUIPMENT	CABLE SIZE ( mm2 )	LOCATION	CIRCUIT USE	
L1	1	20	RCBO	2.5	KITCHEN	LIGHTS	A
L2	1	20	RCBO	2.5	EXTERNAL	SIGNAGE	A
L3	1	20	RCBO	2.5	DINING	LIGHTS	A
L4	1	20	RCBO	2.5	OUTDOOR DINING	LIGHTS	A
							B
							B
							B

## LEGEND

	ELECTRICAL SERVICES SWITCHBOARD.
	SWITCHBOARD / CONTROL PANEL NOT PROVIDED AS PART OF THE ELECTRICAL SUBCONTRACT.
	SINGLE POWER OUTLET.
	DOUBLE POWER OUTLET.
USB	DOUBLE POWER OUTLET C/W USB CHARGER.
	SPECIAL PURPOSE POWER OUTLET.
	SIGNAGE CONNECTION.
	SINGLE PHASE ISOLATOR.
	THREE PHASE ISOLATOR.
	LIGHTING PRESENCE DETECTOR SWITCH.
	LIGHTING CONTROL SWITCH PANEL.
	ONE-WAY LIGHT SWITCH.
	TWO-WAY LIGHT SWITCH.
	CIRCUIT LINE.
	SWITCH LINE.
DB-x - Py	POWER CIRCUIT DESIGNATION. DENOTES DB AND CIRCUIT.
	LIGHTING CONTROL CHANNEL REFERENCE.
	ELECTRICAL EQUIPMENT AS NOTED.
	RJ45 COMMUNICATIONS OUTLET.
	HDMI LINK OUTLET.
	HDMI TO FIBRE LINK OUTLET.
	NBN COMPLIANT NETWORK TERMINATION DEVICE.
	BACKGROUND MUSIC SPEAKER, CEILING MOUNTED.
	BACKGROUND MUSIC SPEAKER, WALL MOUNTED.
	SECURITY CAMERA.
	SINGLE PHASE.
	THREE PHASE.
	CIRCUIT BREAKER.
	ISOLATOR / SWITCH.
	CONTACTOR - NORMALLY OPEN.
	CONTACTOR - NORMALLY CLOSED.
	TRAILING EDGE (TE) POT DIMMER.
	REFER TO DETAIL NOTED FOR THE AREA SHOWN HATCHED. ADDITIONAL OUTLETS & FITTINGS MAY BE SHOWN ON DETAIL.
E1	E1: RECESSED EMERGENCY LIGHT, WHITE.
E2	E2: RECESSED EMERGENCY LIGHT, BLACK.
	EX: EMERGENCY EXIT LIGHT.
L1	L1: RECESSED DIMMABLE LED DOWNLIGHT, BLACK.
L2	L2: RECESSED DIMMABLE LED DOWNLIGHT, BLACK.
L3	L3: PLASTERBOARD RECESSED 300 x 1200 LED PANEL.
L4	L4: OVERHEAD BENCH LED STRIP LIGHT.

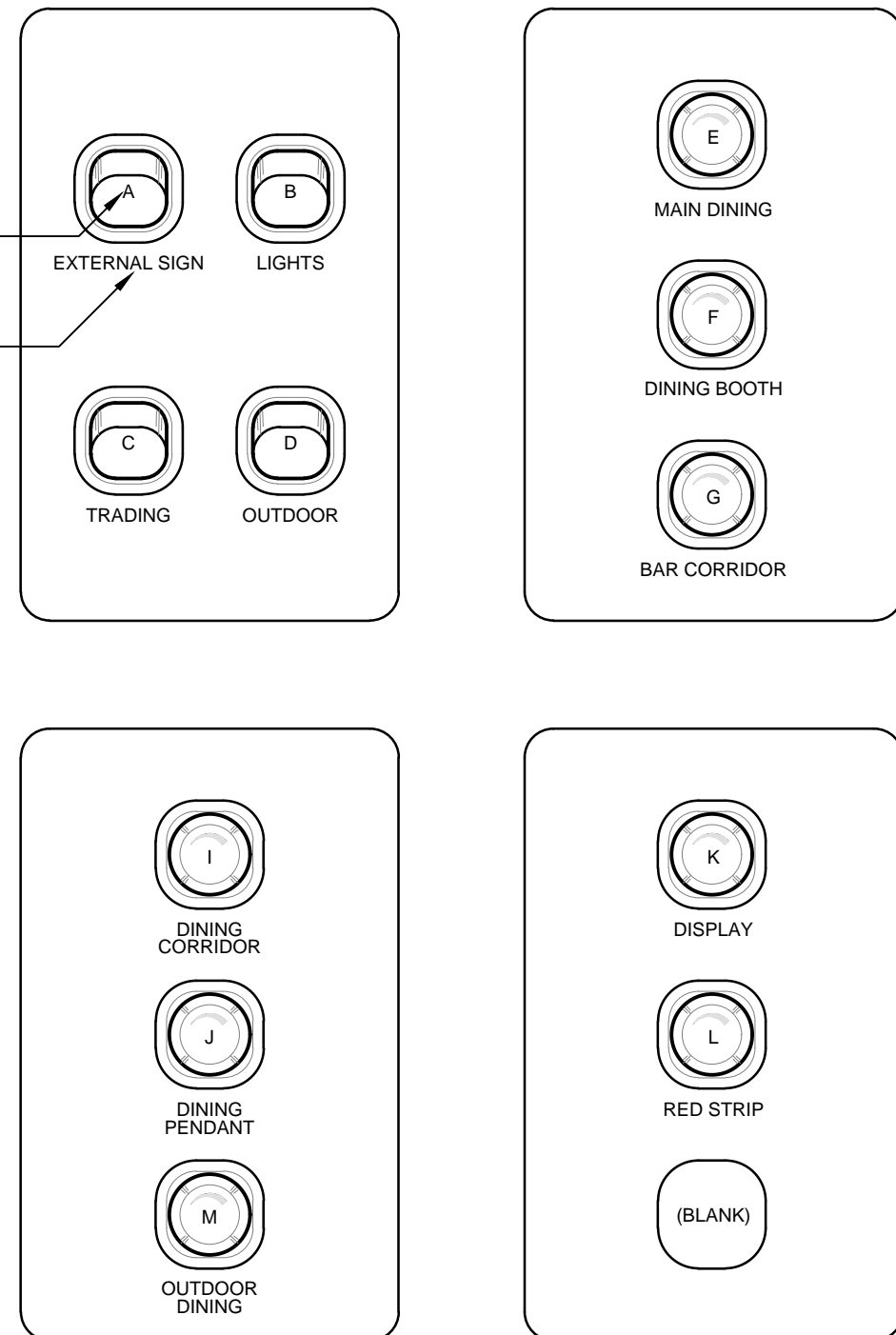
## LEGEND

	L5: SERVERY COUNTER LED STRIP LIGHT.
	L6: DISPLAY SHELF LED STRIP LIGHT.
	L7: FEATURE RED LED LIGHT.
	L8: FEATURE RED LED LIGHT.
CL1	CL1: SURFACE LIGHT C/W DIMMABLE LED GLOBE.
PL1	PL1: SERVERY PENDANT C/W DIMMABLE LED.
PL2	PL2: DINING PENDANT C/W DIMMABLE LED GLOBE.
DRL	DRL: DIRECTIONAL TRACK LIGHT.
WL1	WL1: WALL LIGHT.
FL1	FL1: OUTDOOR DINING FESTOON LIGHTS.
HTL	HTL: COOKING PASS THROUGH HEAT LAMP.



**SCHEMATIC**  
LIGHTING CONTROL  
NOT TO SCALE

INSTALLATION REFERENCE.  
DO NOT ENGRAVE.  
BLACK ENGRAVED TEXT.



**DETAIL**  
SP1 LIGHTING CONTROL ELEVATION  
NOT TO SCALE

THE COPYRIGHT OF THIS DRAWING REMAINS THE PROPERTY OF THE ELECTRICAL DESIGN GROUP.

USE FIGURED DIMENSIONS IN PREFERENCE TO SCALE.

ALL DIMENSIONS TO BE VERIFIED ONSITE.

**BURGER URGE**

D	TENDER	22/08/2025
REV:	DESCRIPTION:	DATE:

**ELECTRICAL DESIGN GROUP**  
ELECTRICAL BUILDING SERVICES CONSULTANTS

BRISBANE: P.O. Box 15 Sherwood Qld 4075  
Phone: (07) 3278 4375  
Email: brisbane@edg.net.au  
Web: www.edg.net.au

ELECTRICAL DESIGN GROUP BRISBANE PTY LTD  
ACN 092 710 793

TRADING AS:  
ELECTRICAL DESIGN  
GROUP

PROJECT:

**BURGER URGE**  
**BURPENGARY EAST**

SITE ADDRESS:

TENANCY 12, 122 BUCKLEY ROAD,  
137 & 143 ULHMANN ROAD,  
BURPENGARY EAST, QUEENSLAND

SCALE: SHEET SIZE:

NOT TO SCALE AT A1

DRAWING TITLE:

**ELECTRICAL SERVICES**  
**LEGEND & DETAILS**

PROJECT NO: DRAWING NO: REVISION:

**C3609a E01 D**



NOTES

1. EXTENT OF WORKS

THE ELECTRICAL SUB CONTRACT INCLUDES THE FOLLOWING WORKS:

- CO-ORDINATION.
- ACCESS AND CABLE PATHWAYS.
- FIXINGS AND MOUNTINGS.
- PERMANENT NON STICK LABELLING.
- INSPECTIONS.
- TESTING AND COMMISSIONING.
- OPERATOR TRAINING.
- MAINTENANCE.
- OPERATION AND MAINTENANCE MANUAL.
- AS CONSTRUCTED DOCUMENTATION.
- POWER DISTRIBUTION.
- LIGHTING.
- COMMUNICATIONS CABLING.
- INTRUDER DETECTION.
- CCTV.
- TEST AND TAG ALL LOOSE PLUG IN BURGER URGE EQUIPMENT PROVIDED AS PART OF THE BASE BUILD AND AS PROVIDED BY THE OPERATOR TO FACILITATE OPERATION OF THE STORE.
- ALL MINOR COMPONENTS AND INCIDENTAL WORKS NOT SPECIFICALLY REFERRED TO, HOWEVER NECESSARY TO COMPLETE THE ELECTRICAL SERVICES INSTALLATION SUCH THAT IT IS HANDED OVER COMPLETE, OPERATIONAL AND FIT FOR THE INTENDED USE.

SUPPLY ALL LABOUR, MATERIALS, EQUIPMENT, AND ALL OTHER ITEMS, WHETHER MENTIONED IN DETAIL OR NOT, REQUIRED FOR THE SATISFACTORY COMPLETION OF THE ELECTRICAL SERVICES INSTALLATION, LEAVING IN FULL WORKING ORDER TO THE SATISFACTION OF THE PROJECT MANAGER.

ACCEPT FULL RESPONSIBILITY FOR LIASING, ARRANGING AND CO-ORDINATION OF ALL WORKS THAT HAVE AN EFFECT ON OR WILL BE AFFECTED BY THE ELECTRICAL SERVICES.

ON THE DAY THE STORE OPENS FOR TRADING THE ELECTRICAL SUB CONTRACTOR MUST PROVIDE AN ELECTRICIAN ON SITE FOR THE INITIAL 12 HOURS OF TRADING.

2. WORKMANSHIP

ENSURE THAT THE WORK IS PERFORMED BY THE HOLDER OF A CURRENT ELECTRICAL SUB CONTRACTOR LICENCE. ENSURE THE INSTALLATION AND ALL COMPONENTS, FIXTURES, FITTINGS, OUTLETS AND CABLES ARE SUPPLIED AND INSTALLED TO A HIGH STANDARD THROUGHOUT, AND INSTALLED IN A NEAT AND TRADESMAN LIKE MANNER, TO THE CURRENT INDUSTRY STANDARDS. ENSURE ALL MATERIALS AND COMPONENTS OF A SIMILAR TYPE ARE OF THE SAME MANUFACTURER AND INSTALLED IN A UNIFORM MANNER.

IT IS THE ELECTRICAL SUB CONTRACTOR'S RESPONSIBILITY TO ENSURE THAT THE INSTALLATION IS FIT FOR PURPOSE AND IS PROVIDED AS A COMPLETE WORKING INSTALLATION. IT IS THE ELECTRICAL SUB CONTRACTOR'S RESPONSIBILITY TO PROVIDE ALL COMPONENTS, FITTINGS, FIXTURES, SYSTEMS, PROGRAMMING ETC IRRESPECTIVE OF THE LEVEL DETAILED IN THE DOCUMENTS SUCH THAT THE INSTALLATION IS PROVIDED AS A COMPLETE WORKING INSTALLATION.

CONCEAL ALL WIRING AND CONDUITS. EXPOSED CABLING OR CONDUITS ARE NOT ACCEPTABLE. ENSURE ALL COMPONENTS, EQUIPMENT AND MATERIALS SUPPLIED ARE NEW, UNUSED, DESIGNED AND SELECTED TO ENSURE SATISFACTORY OPERATION UNDER VARYING ATMOSPHERIC, CLIMATIC, HUMID TROPICAL CONDITIONS WITHOUT DISTORTION AND DETERIORATION IN ANY PART AFFECTING EFFICIENCY AND RELIABILITY OF THE SYSTEMS. DESIGN AND SELECT ALL EQUIPMENT TO PROVIDE THE NECESSARY SAFETY TO HUMAN LIFE AND PROPERTY DURING OPERATION AND MAINTENANCE WITH PARTICULAR ATTENTION GIVEN TO ELECTRICAL SAFETY AND SEGREGATION PRECAUTIONS.

CHECK THE FINISHED PAINTWORK AROUND THE AREA OF EACH INSTALLATION AND TOUCH UP ALL DAMAGED PARTS AND FINISHES AFTER THE INSTALLATION OF THE ELECTRICAL SERVICES.

ALL WORKS ARE TO BE CARRIED OUT IN ACCORDANCE WITH THE BUILDER'S PROGRAM. ENSURE ALL FINAL LOCATIONS OF OUTLETS AND FITTINGS ARE CO-ORDINATED ONSITE WITH THE ARCHITECT AND ALL OTHER SERVICES, TO THE APPROVAL OF THE PROJECT MANAGER. ALLOW TO CO-ORDINATE THE FINAL LOCATION OF ALL EQUIPMENT, FITTINGS, & OUTLETS, SUCH THAT THEY ARE INSTALLED IN ACCORDANCE WITH THE AS3000 RESTRICTED ZONES, AND ARE NOT COVERED INAPPROPRIATELY.

ENSURE THAT ALL METAL SURFACES ARE SUITABLY PROTECTED AGAINST CORROSION, AND THAT ALL PLASTIC MATERIALS ARE UV STABILISED.

PROVIDE ALL MATERIALS AS NEW, AND OF THE HIGHEST CLASS AVAILABLE FOR THEIR RESPECTIVE TYPES. ENSURE ALL ASPECTS OF THE WORK ARE OF A HIGH STANDARD THROUGHOUT, AND INSTALLED IN A NEAT AND TRADESMAN LIKE MANNER, TO THE CURRENT INDUSTRY STANDARDS.

UNDER NO CIRCUMSTANCES ARE CORRUGATED CONDUITS ALLOWED TO BE RUN WITHIN THE KITCHEN AREA INCLUDING UNDER AND BEHIND BENCHES OR COUNTERS.

3. STANDARDS

IRRESPECTIVE OF INFORMATION CONTAINED IN THE ELECTRICAL SERVICES DOCUMENTS OR IN INSTRUCTIONS, IT IS THE ELECTRICAL SUB CONTRACTOR'S RESPONSIBILITY TO ENSURE ALL ELECTRICAL SERVICES WORKS ARE INSTALLED IN ACCORDANCE WITH THE REQUIREMENTS OF THE FOLLOWING. REFER ANY DISCREPANCIES BETWEEN THE REQUIREMENTS OF THE FOLLOWING AND/OR THE ELECTRICAL SERVICES DOCUMENTS AND INSTRUCTIONS TO THE ARCHITECT FOR CLARIFICATION PRIOR TO THE PLACING OF ORDERS, FABRICATION OR INSTALLATION OF THE ITEMS/METHODS IN DISCREPANCY.

- NCC BUILDING CODE OF AUSTRALIA.
- ELECTRICITY ACT.
- ELECTRICAL SAFETY ACT.
- AS/NZS3000.
- AS3008.
- AS1170. 4.
- WORKPLACE HEALTH AND SAFETY ACT.
- TELECOMMUNICATIONS ACT.
- ACMA REQUIREMENTS.

4. AUTHORITIES

ENSURE ALL OF THE ELECTRICAL SERVICES COMPLY WITH THE REQUIREMENTS OF ALL REGULATORY AUTHORITIES HAVING JURISDICTION OVER THE SITE INCLUDING BUT NOT LIMITED TO THE FOLLOWING:

- ACMA.
- LOCAL COUNCIL.
- ERGON.
- STATE GOVERNMENT DEPARTMENT OF ENVIRONMENT AND HERITAGE.
- STATE GOVERNMENT DEPARTMENT OF WORKPLACE, HEALTH AND SAFETY.
- LOCAL FIRE AND RESCUE AUTHORITY.

5. CABLES

UNLESS OTHERWISE SPECIFIED, INSTALL AND TERMINATE CABLES IN ACCORDANCE WITH THE MANUFACTURERS' RECOMMENDATIONS. DETERMINE THE FINAL ROUTES TO SUIT THE BUILDING STRUCTURE AND SITE CONDITIONS. UNLESS NOTED OTHERWISE, PROVIDE ALL 240 VOLT POWER AND LIGHTING WIRING AS 2.5mm<sup>2</sup> TWIN & EARTH STRANDED COPPER CONDUCTORS, PVC INSULATED 0.6/1kV V75 GRADE TO AS3174, PROTECTED BY A 20 AMP 30mAmp RCBO CIRCUIT BREAKER. ALL CONDUIT AND FITTINGS TO BE RIGID UPVC TO AS2053, UNLESS NOTED OTHERWISE. DO NOT JOIN CABLE UNLESS SPECIFICALLY NOTED. DO NOT USE INSULATION TAPE. DO NOT USE POWER BOARDS.

NOTES

6. POWER DISTRIBUTION

THE POWER DISTRIBUTION COMPONENT OF THE ELECTRICAL SERVICES SUB-CONTRACT INCLUDES PROVIDING THE SWITCHGEAR WITHIN DB-A. DB-A WILL BE PROVIDED AS PART OF THE BASE BUILD WORKS. ALL COMPONENTS OF THE POWER DISTRIBUTION WORKS WITHIN THE SITE ARE TO BE PROVIDED AS PART OF THE WORKS. THIS INCLUDES THOUGH IS NOT LIMITED TO THE FOLLOWING EXTENT OF WORK:

- POWER DISTRIBUTION.
- EARTHING.
- CIRCUITS.
- DB-A SWITCHGEAR AND ASSOCIATED LABELLING.
- ISOLATORS AND OUTLETS.
- TESTING AND COMMISSIONING.
- TESTING AND TAGGING OF THE BURGER URGE SUPPLIED LOOSE PLUG IN EQUIPMENT.

7. LIGHTING

THE LIGHTING COMPONENT OF THE ELECTRICAL SERVICES SUB-CONTRACT INCLUDES ALL OF THE INTERNAL AND EXTERNAL LIGHT FITTINGS, LAMPS AND ACCESSORIES, THOUGH IT IS NOT LIMITED TO THE FOLLOWING EXTENT OF WORK:

- LIGHTING.
- LIGHT FITTINGS AND ACCESSORIES.
- CONNECTION TO THE EXHAUST HOOD LIGHTS.
- LAMPS.
- ADJUSTING THE EMERGENCY AND EXIT LIGHTING PROVIDED AS PART OF THE BASE BUILD.
- ADDITIONAL EMERGENCY AND EXIT LIGHTING.
- EARTHING OF THE LIGHTING INSTALLATION.
- LIGHTING CONTROL.
- LIGHTING SUBCIRCUITS.
- TESTING AND COMMISSIONING.

EXTEND THE DB-A SINGLE POINT EMERGENCY LIGHTING SYSTEM SUCH THAT IT COMPLIES WITH THE LATEST ISSUE OF ALL PARTS AS2293 AND THE RELEVANT PARTS OF THE NCC BCA. INSTALL EMERGENCY LIGHT FITTINGS NOMINATED AS MAINTAINED WITH THE LAMP PERMANENTLY ON SUPPLIED VIA AN UNSWITCHED ACTIVE MAINS SUPPLY WHEN THE MAINS SUPPLY IS AVAILABLE. WHEN THE MAINS SUPPLY IS NOT AVAILABLE, THE LAMP IS TO REMAIN ON SUPPLIED BY THE EMERGENCY PACK. SINGLE LAMP MAINTAINED EMERGENCY LIGHTS ARE NOT SWITCHED WITH THE LOCAL GENERAL AREA LIGHTING. (THE LAMP IS ALWAYS ON.)

INSTALL EMERGENCY LIGHT FITTINGS NOMINATED AS NON-MAINTAINED AS FOLLOWS:

- IF THE FITTING IS NOT BEING SWITCHED, THE LAMP IS TO REMAIN OFF WHEN THE MAINS SUPPLY IS AVAILABLE. WHEN THE MAINS SUPPLY IS NOT AVAILABLE, THE LAMP IS TO BE SWITCHED ON SUPPLIED BY THE EMERGENCY PACK. UNSWITCHED SINGLE LAMP NON-MAINTAINED EMERGENCY LIGHTS ARE NOT SWITCHED WITH THE LOCAL GENERAL AREA LIGHTING. (THE LAMP IS ON ONLY WHEN THE MAINS SUPPLY IS NOT AVAILABLE.)
- IF THE FITTING IS BEING SWITCHED, THE LAMP IS TO BE SUPPLIED AND CONTROLLED WITH THE LOCAL GENERAL AREA LIGHTING WHEN THE MAINS SUPPLY IS AVAILABLE. WHEN THE MAINS SUPPLY IS NOT AVAILABLE THE LAMP IS TO BE SWITCHED ON, SUPPLIED BY THE EMERGENCY PACK. (THE LAMP IS ON WHEN TURNED ON WITH THE LOCAL GENERAL LIGHTING OR THE MAIN SUPPLY IS NOT AVAILABLE.)

INSTALL EMERGENCY LIGHTS SUCH THAT THE STATUS INDICATOR L.E.D. IS CLEARLY VISIBLE AND THE TEST BUTTONS ARE READILY ACCESSIBLE. LABEL EACH CIRCUIT BREAKER WHICH CONTROLS THE UNSWITCHED ACTIVE TO EXIT LIGHTS WITH A LABEL FIXED ADJACENT; ENGRAVED PLASTIC LAMINATE, GREEN BACKGROUND WITH WHITE CHARACTERS: -

WARNING  
INTERRUPTING SUPPLY WILL DISCHARGE  
EMERGENCY LIGHTING BATTERIES

PROVIDE WRITTEN EVIDENCE OF THE INITIAL COMMISSIONING AND TESTING AND TESTING FOR THE DURATION OF THE MAINTENANCE PERIOD IN ACCORDANCE WITH AS 2293.2.

THIS EVIDENCE IS TO BE IN THE FORM OF A LOG BOOK SIMILAR TO THE GENERAL LIGHTING SERVICE PTY LTD "EMERGENCY LIGHTING MAINTENANCE LOG BOOK AND MANUAL" WHICH IS TO BE PROVIDED BY THE ELECTRICAL SUB-CONTRACTOR AND HAVE ALL ENTRIES FULLY COMPLETED AND BE PRESENTED FOR INSPECTION AT PRACTICAL COMPLETION. THE LOG BOOK IS TO BE RETAINED BY THE ELECTRICAL SUB-CONTRACTOR FOR THE DURATION OF THE MAINTENANCE PERIOD, AND THE SIX MONTHLY TEST AND MAINTENANCE RESULTS ENTERED. THE LOG BOOK IS TO BE PRESENTED FOR APPROVAL AT FINAL COMPLETION (EXPIRY OF THE MAINTENANCE PERIOD) AND WILL BE FORWARDED TO THE OPERATOR FOR THEIR USE.

PROVIDE MAINTENANCE OF THE EMERGENCY AND EXIT LIGHTING INSTALLATION INCLUDING RECORDS IN ACCORDANCE WITH THE LATEST ISSUE OF ALL PARTS AS2293 AND THE RELEVANT PARTS OF THE NCC BCA. PROVIDE THE EMERGENCY LIGHTING SYSTEM WITH A SUPPLY SENSING AND TESTING FACILITY IN ACCORDANCE WITH AS 2293.1.

8. COMMUNICATIONS CABLING

THE COMMUNICATIONS CABLING COMPONENT OF THE ELECTRICAL SERVICES SUB-CONTRACT INCLUDES THE CONNECTION OF THE NTD TO A COMMUNICATIONS RACK CR-A. THE PROVISION OF THE BURGER URGE COMMUNICATIONS RACK CR-A AND BURGER URGE COMMUNICATIONS OUTLETS ARE PART OF THE COMMUNICATIONS CABLING COMPONENT OF THE ELECTRICAL SERVICES SUB-CONTRACT WHICH INCLUDES THOUGH IS NOT LIMITED TO THE FOLLOWING EXTENT OF WORK:

- CONNECT THE NBN NTD TO THE COMMUNICATIONS RACK CR-A VIA 2 X CAT 6 CABLES.
- COMMUNICATIONS RACK CR-A INCLUDING ALL ACCESSORIES.
- CAT 6 TIE CABLING FROM THE NTD TO A DEDICATED PATCH PANEL IN THE COMMUNICATIONS RACK.
- TESTING AND COMMISSIONING.

9. BACKGROUND MUSIC SYSTEM

THE BACKGROUND MUSIC SYSTEM COMPONENT OF THE ELECTRICAL SERVICES SUB-CONTRACT INCLUDES TO BE ADVISED.

10. SECURITY SYSTEM

THE SECURITY COMPONENT OF THIS CONTRACT INCLUDES THE PROVISION OF A NEW INTRUDER DETECTION SECURITY SYSTEM EQUAL TO INNER RANGE INTEGRITI.

CONFIGURE THE SECURITY SYSTEM TO OPERATE AS DIRECTED BY THE OPERATOR. THE SECURITY COMPONENT OF THIS CONTRACT INCLUDES, BUT IS NOT LIMITED TO THE FOLLOWING EXTENT OF WORK:

- CONTROLLERS, EXPANSION PANELS, HOUSINGS AND POWER SUPPLIES.
- REMOTE MONITORING VIA A CABLED INTERNET CONNECTION AND A CELLULAR CONNECTION.
- INTRUDER DETECTORS.
- REED SWITCHES.
- ARMING / DISARMING KEY PANEL.
- PIZEO SIRENS.
- SATELLITE STROBE.
- CABLE ACCESS WAYS.
- TESTING AND COMMISSIONING.

THE SECURITY SYSTEM IS TO BE UNDERTAKEN BY A SPECIALIST SECURITY CONTRACTOR THAT IS FAMILIAR WITH AND EXPERIENCED IN INSTALLING AND COMMISSIONING THE PROPOSED EQUIPMENT.

ENSURE ALL SECURITY SYSTEM WORK IS COMPLETED BY A CURRENT MEMBER ASIAL WHO HOLDS THE APPROPRIATE SECURITY EQUIPMENT INSTALLER LICENCE. PROVIDE A COPY OF THE ASIAL MEMBERSHIP AND SECURITY EQUIPMENT INSTALLER LICENCE OF EACH STAFF MEMBER WORKING ON THE SECURITY SYSTEM INSTALLATION COMPONENT OF THE PROJECT FOR APPROVAL PRIOR TO THE COMMENCEMENT OF WORK. INCLUDE A COPY OF SUCH LICENSES IN THE OPERATIONS AND MAINTENANCE MANUAL.

NOTES

11. CCTV SYSTEM

PROVIDE A FULLY IP BASED SURVEILLANCE (HD COLOUR VIDEO AND AUDIO) SOLUTION COMPRISING A NETWORKABLE NVR EQUAL TO HIKVISION DS-7732N1-14/24P MOUNTED IN CR-A CONNECTED TO THE CAMERAS VIA CAT 6 CABLING TO A DEDICATED PATCH PANEL IN CR-A. PROVIDE THE NVR WITH SUFFICIENT STORAGE TO RECORD ALL THE CAMERAS FOR 30 DAYS. CONFIRM THE POSITION, FOCUS AND AIMING OF EACH CAMERA ON SITE WITH THE OPERATORS REPRESENTATIVE ALLOWING FOR EACH CAMERA TO BE LOCATED 1M IN ANY DIRECTION FROM THE POSITION NOMINATED INCLUDING WALL MOUNTING.

THE CCTV CAMERA UTP CABLING INCLUDING THE PATCH LEADS IS TO BE A DIFFERENT COLOUR TO THE GENERAL COMMUNICATIONS CABLING AND THE GAMING COMMUNICATIONS CABLING. PROVIDE A PATCH LEAD FOR EACH CAMERA. CAMERAS ARE TO BE MOUNTED OVER THE MOUNTING BOX WITH THE FACEPLATE REMOVED WITH THE CABLE CONNECTED TO THE CAMERA BEING CONCEALED.

PROVIDE A 27-INCH MONITOR CONNECTED TO THE NVR WITH THE MONITOR LOCATED ADJACENT TO CR-A WALL MOUNTED ON AN ADJUSTABLE BRACKET. PROVIDE THE MONITOR EQUAL TO SAMSUNG S27A804UJN / LS27A804UJNXGO TO VIEW THE CAMERAS. POWER THE MONITOR VIA THE RACK POWER RAIL.

CONNECT THE NVR TO THE OPERATORS LAN SUCH THAT THE CCTV SYSTEM CAN BE SECURELY ACCESSED REMOTELY BY THE CLIENTS REPRESENTATIVE.

THE CCTV COMPONENT OF THIS CONTRACT INCLUDES BUT IS NOT LIMITED TO THE FOLLOWING EXTENT OF WORK:

- CAMERAS.
- CAMERA MOUNTING BRACKETS AND IMPACT PROTECTION.
- NVR.
- LICENSING FOR FIVE YEARS BEYOND THE DATE OF PRACTICAL COMPLETION.
- MONITOR.
- CABLING.
- SOFTWARE FOR THIRD PARTY PC.
- PROGRAMMING.
- COMMISSIONING.
- TRAINING.

PROVIDE COMPREHENSIVE DETAILS OF THE PROPOSED CCTV EQUIPMENT AND COMPONENTS OF THE CCTV SYSTEM FOR APPROVAL PRIOR TO ORDERING.

THE CCTV SYSTEM IS TO BE UNDERTAKEN BY A SPECIALIST SECURITY CONTRACTOR THAT IS FAMILIAR WITH AND EXPERIENCED IN INSTALLING AND COMMISSIONING THE PROPOSED EQUIPMENT.

ENSURE ALL CCTV WORK IS COMPLETED BY A CURRENT MEMBER ASIAL WHO HOLDS THE APPROPRIATE SECURITY EQUIPMENT INSTALLER LICENCE. PROVIDE A COPY OF THE ASIAL MEMBERSHIP AND SECURITY EQUIPMENT INSTALLER LICENCE OF EACH STAFF MEMBER WORKING ON THE CCTV INSTALLATION COMPONENT OF THE PROJECT FOR APPROVAL PRIOR TO THE COMMENCEMENT OF WORK. INCLUDE A COPY OF SUCH LICENSES IN THE OPERATIONS AND MAINTENANCE MANUAL.

COORDINATE THE NETWORK CONNECTIONS AND IP ADDRESS OF THE CCTV EQUIPMENT WITH THE CLIENTS REPRESENTATIVES IT STAFF.

ALLOW FOR THE ADJUSTMENT AND AIMING OF CAMERAS OVER A PERIOD OF 2 HOURS TO ACHIEVE FINAL SET-UP. THIS WORK WILL BE CARRIED OUT UNDER THE DIRECTION OF AND TO THE SATISFACTION OF THE CLIENTS REPRESENTATIVE.

THE ADJUSTING AND AIMING OF THE CCTV INSTALLATION WILL INCLUDE THE FOLLOWING:

- FOCUSING.
- ADJUSTING MOUNTINGS AND BRACKETS.
- AIMING OF CAMERAS.
- TESTING ALL OPERATIONS OF THE CCTV SYSTEM.

ALLOW TO ATTEND SITE TWICE DURING THE DEFECTS AND LIABILITY PERIOD AND UNDERTAKE THE ABOVE ADJUSTMENTS TO AND REPROGRAM AS DIRECTED BY THE CLIENTS REPRESENTATIVE OF THE CCTV SYSTEM.

12. ABBREVIATIONS

- A - AMP CURRENT RATING
- AB - MOUNT ABOVE BENCH.
- AFFL - ABOVE FINISHED FLOOR LEVEL.
- BB - MOUNT BELOW BENCH.
- BH - MOUNT ON BULKHEAD.
- CEIL - MOUNT ON CEILING.
- CR - COMMUNICATIONS RACK.
- CS - MOUNT WITHIN CEILING SPACE.
- C/W - COMPLETE WITH.
- DB - DISTRIBUTION BOARD.
- MCB - MINIATURE CIRCUIT BREAKER.
- MSB - MAIN SWITCHBOARD.
- MSSB - MECHANICAL SERVICES SWITCHBOARD.
- N - NEON / LED INDICATOR WHEN ON.
- NTS - NOT TO SCALE.
- RCD - CIRCUIT PROTECTED VIA A 30mA RESIDUAL CURRENT DEVICE INTEGRAL TO THE CIRCUIT BREAKER.
- REF - REFRIGERATOR.
- SP - SWITCH PANEL.
- UNO - UNLESS NOTED OTHERWISE.
- WP - WEATHERPROOF TO IP56 UNO.
- 500 - NUMBER DENOTES MOUNTING HEIGHT AFFL.

THE COPYRIGHT OF THIS DRAWING REMAINS THE PROPERTY OF THE ELECTRICAL DESIGN GROUP.		
USE FIGURED DIMENSIONS IN PREFERENCE TO SCALE.		
ALL DIMENSIONS TO BE VERIFIED ONSITE.		



B	TENDER	20/08/2025
REV:	DESCRIPTION:	DATE:

ELECTRICAL DESIGN GROUP  
ELECTRICAL BUILDING SERVICES CONSULTANTS

BRISBANE: P.O. Box 15 Sherwood Qld 4075  
Phone: (07) 3278 4375  
Email: brisbane@edg.net.au  
Web: www.edg.net.au

ELECTRICAL DESIGN GROUP BRISBANE PTY LTD  
ACN 092 710 793

TRADING AS:  
ELECTRICAL DESIGN GROUP

PROJECT:

BURGER URGE  
BURPENGARY EAST

SITE ADDRESS:

TENANCY 12, 122 BUCKLEY ROAD,  
137 & 143 ULHMANN ROAD,  
BURPENGARY EAST, QUEENSLAND

SCALE: SHEET SIZE:

NOT TO SCALE AT A1

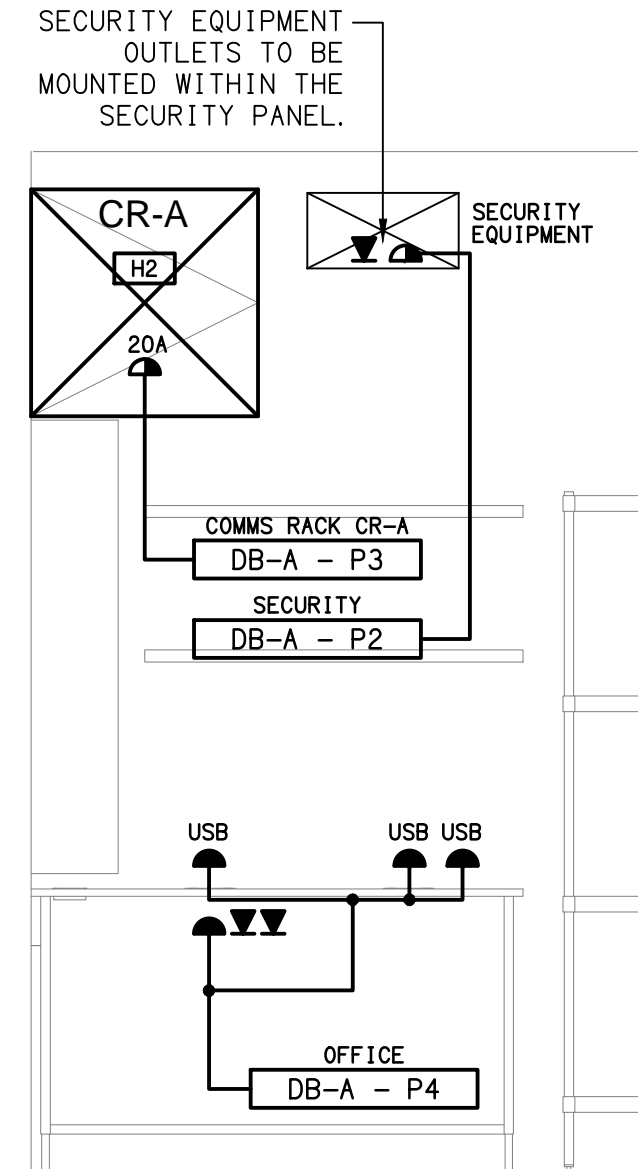
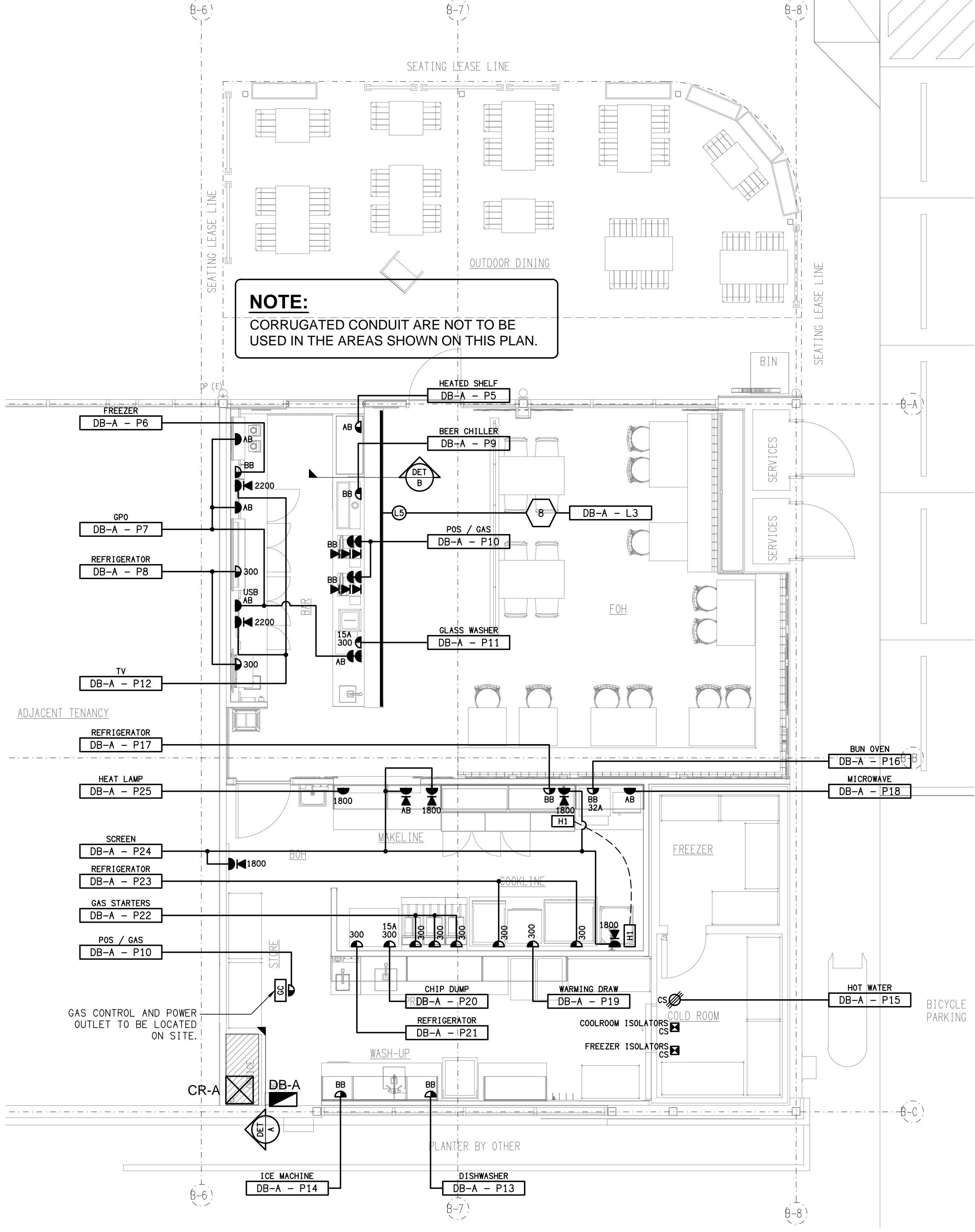
DRAWING TITLE:

ELECTRICAL SERVICES  
NOTES

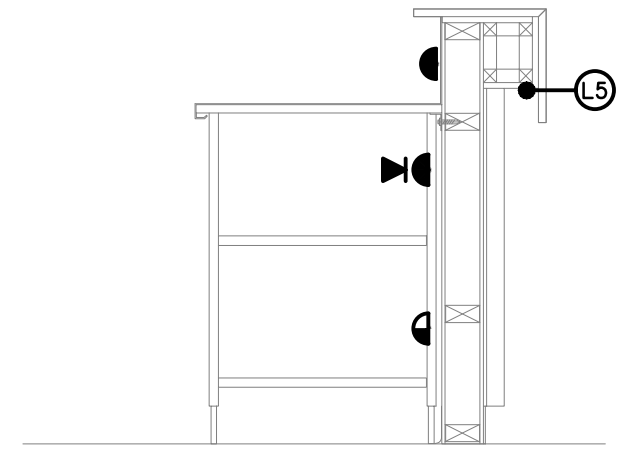
PROJECT NO: DRAWING NO: REVISION:

C3609a E02 B

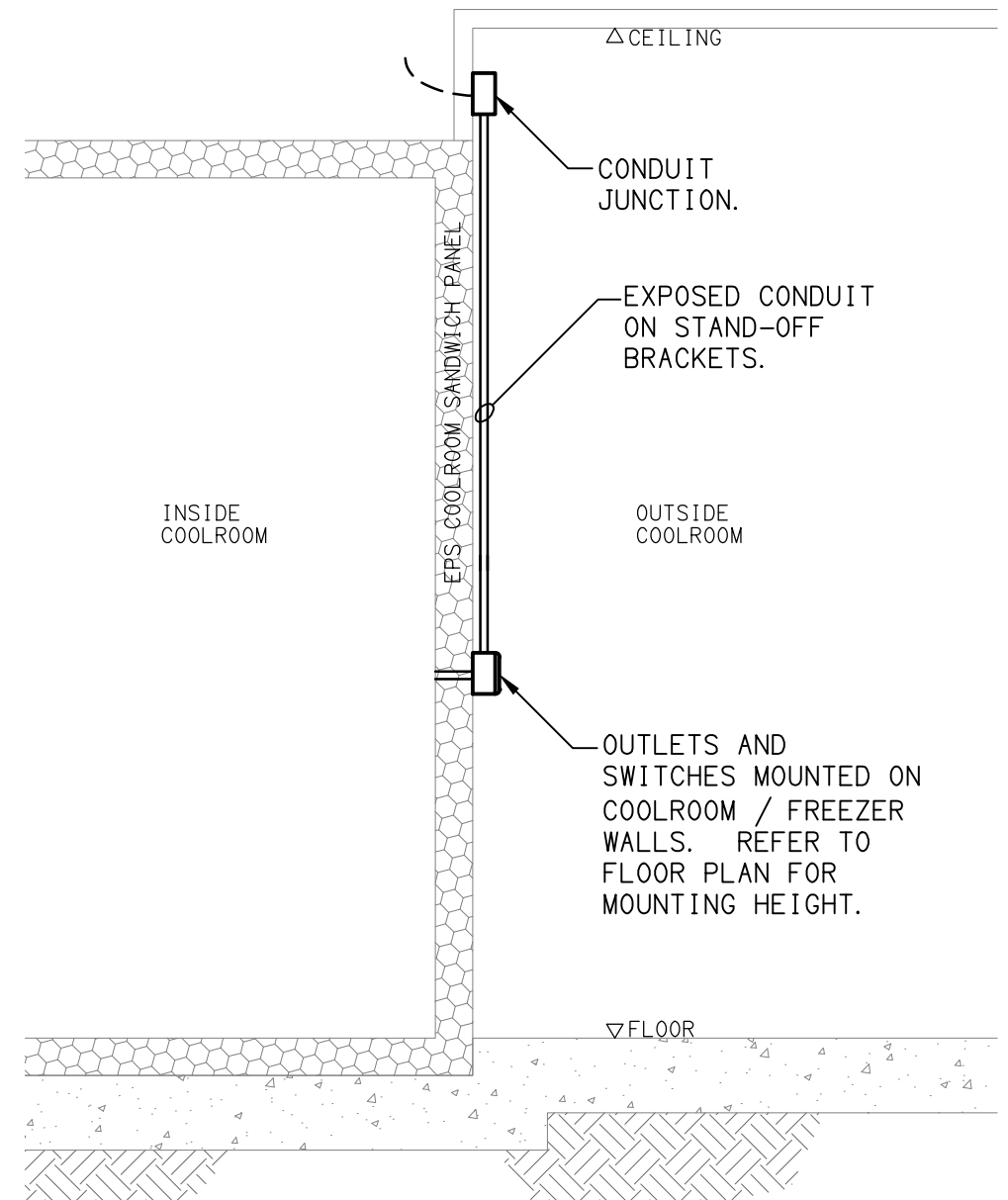




**DETAIL A**  
MANAGERS ELEVATION  
SCALE 1: 20



**DETAIL B**  
SERVERY COUNTER SECTION  
SCALE 1: 20



**DETAIL C**  
COOLROOM / FREEZER OUTLETS  
NOT TO SCALE

THE COPYRIGHT OF THIS DRAWING REMAINS THE PROPERTY OF THE ELECTRICAL DESIGN GROUP.

USE FIGURED DIMENSIONS IN PREFERENCE TO SCALE.

ALL DIMENSIONS TO BE VERIFIED ONSITE.

**BURGER URGE**

C	TENDER	20/08/2025
REV:	DESCRIPTION:	DATE:

**ELECTRICAL DESIGN GROUP**  
ELECTRICAL BUILDING SERVICES CONSULTANTS

BRISBANE: P.O. Box 15 Sherwood Qld 4075  
Phone: (07) 3278 4375  
Email: brisbane@edg.net.au  
Web: www.edg.net.au

ELECTRICAL DESIGN GROUP BRISBANE PTY LTD  
ACN 092 710 793

TRADING AS:  
ELECTRICAL DESIGN GROUP

PROJECT:

**BURGER URGE  
BURPENGARY EAST**

SITE ADDRESS:

TENANCY 12, 122 BUCKLEY ROAD,  
137 & 143 ULHMANN ROAD,  
BURPENGARY EAST, QUEENSLAND

SCALE: SHEET SIZE:

1:50 UNO AT A1

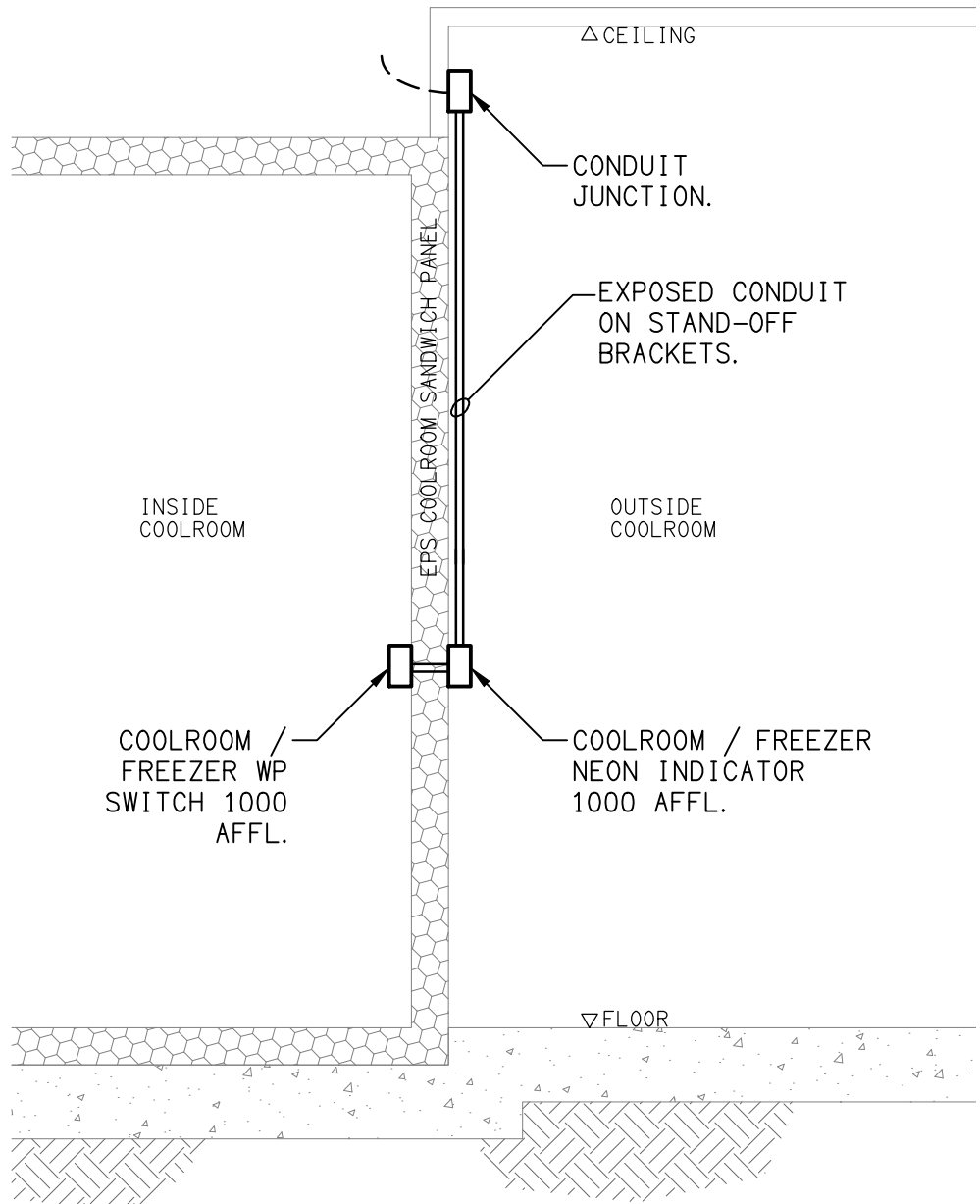
DRAWING TITLE:

**ELECTRICAL SERVICES  
FLOOR PLAN**

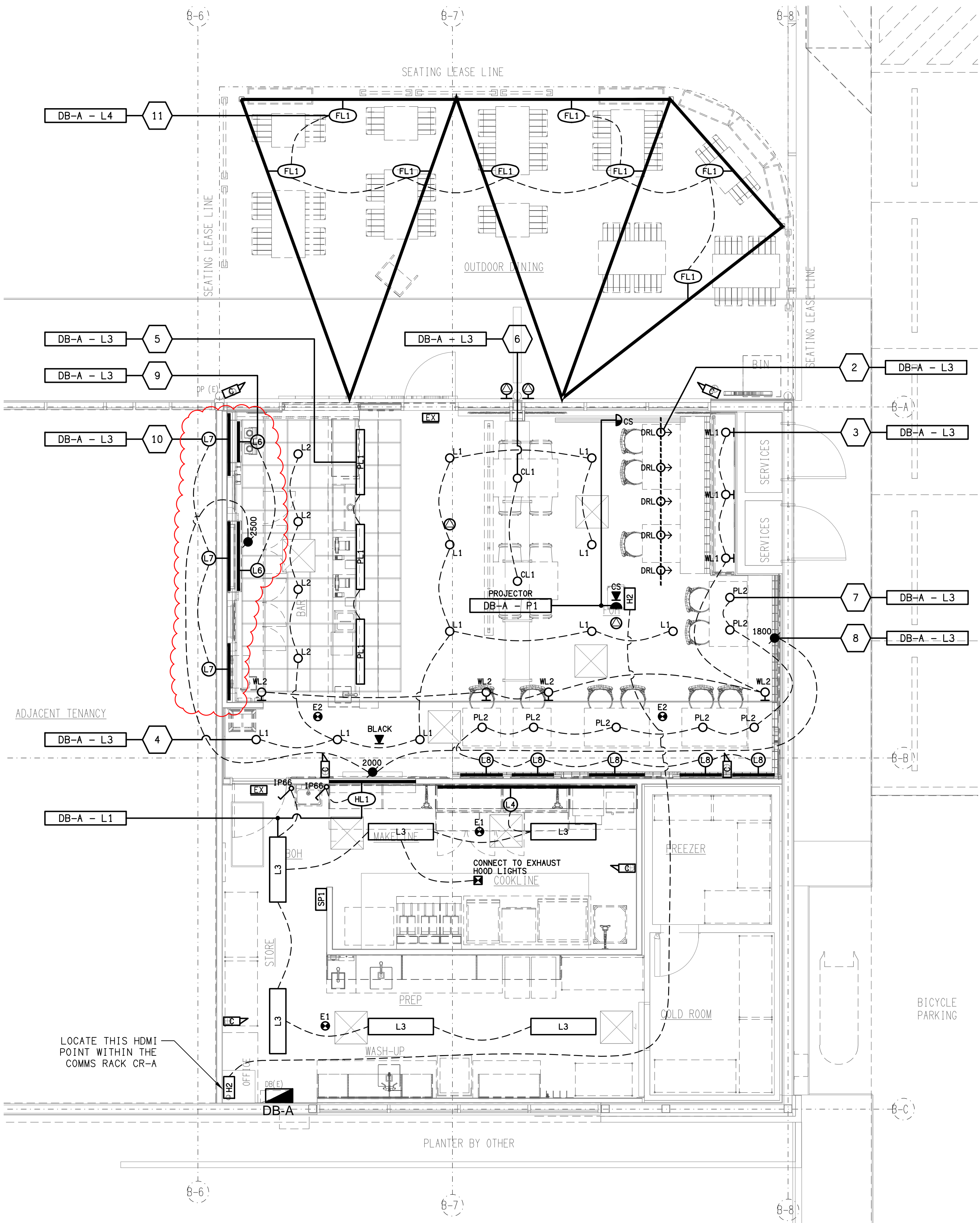
PROJECT NO: DRAWING NO: REVISION:

**C3609a E03 C**

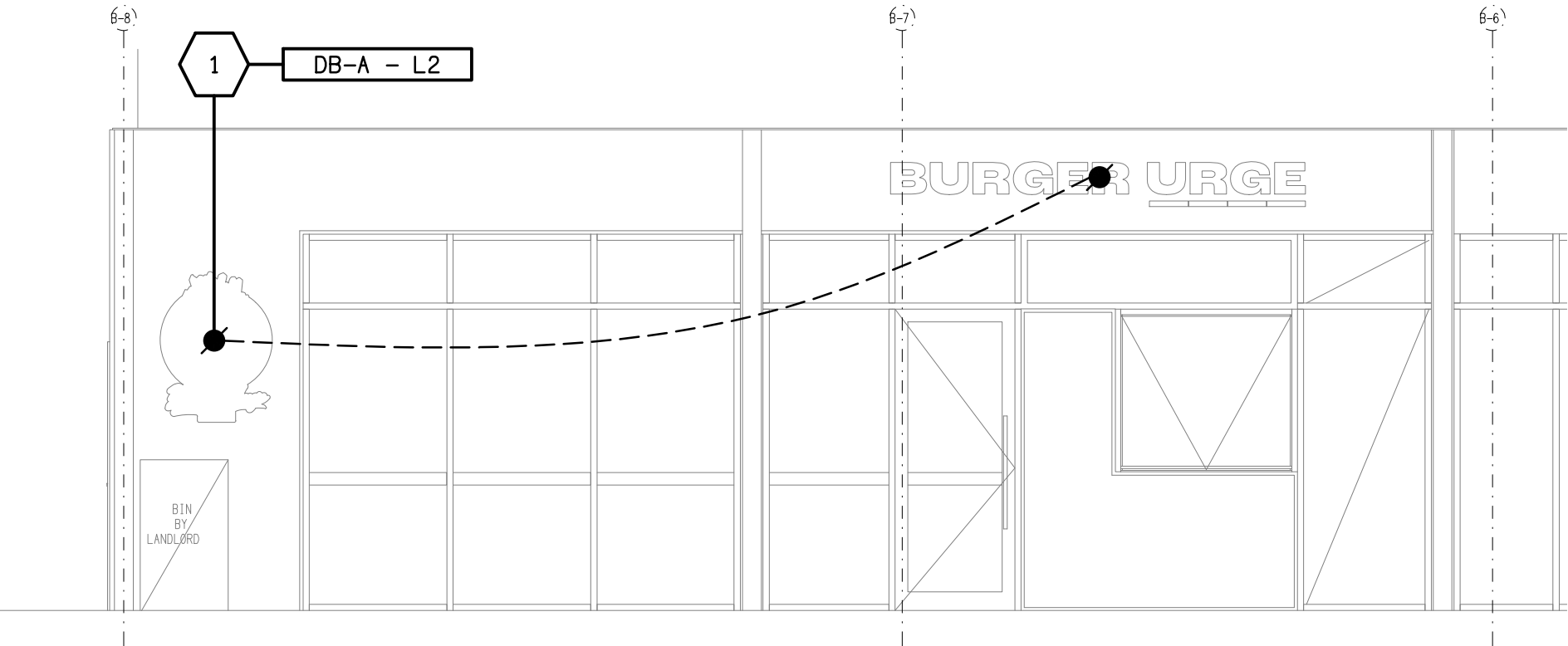
**BURGER URGE**



**DETAIL A**  
COOLROOM / FREEZER LIGHTING CONTROL  
NOT TO SCALE



**REFLECTED CEILING PLAN**  
BURGER URGE TENANCY  
SCALE 1:50



**ELEVATION**  
MAIN ENTRY BUILDING EXTERNAL  
SCALE 1:50

D	TENDER	22/08/2025
REV.	DESCRIPTION:	DATE:

**ELECTRICAL DESIGN GROUP**  
ELECTRICAL BUILDING SERVICES CONSULTANTS

BRISBANE: P.O. Box 15 Sherwood Qld 4075  
Phone: (07) 3278 4375  
Email: brisbane@edg.net.au  
Web: www.edg.net.au

ELECTRICAL DESIGN GROUP BRISBANE PTY LTD  
ACN 092 710 793

TRADING AS:  
ELECTRICAL DESIGN  
GROUP

PROJECT:

**BURGER URGE  
BURPENGARY EAST**

SITE ADDRESS:  
TENANCY 12, 122 BUCKLEY ROAD,  
137 & 143 ULHMANN ROAD,  
BURPENGARY EAST, QUEENSLAND

SCALE: SHEET SIZE:

1:50 AT A1

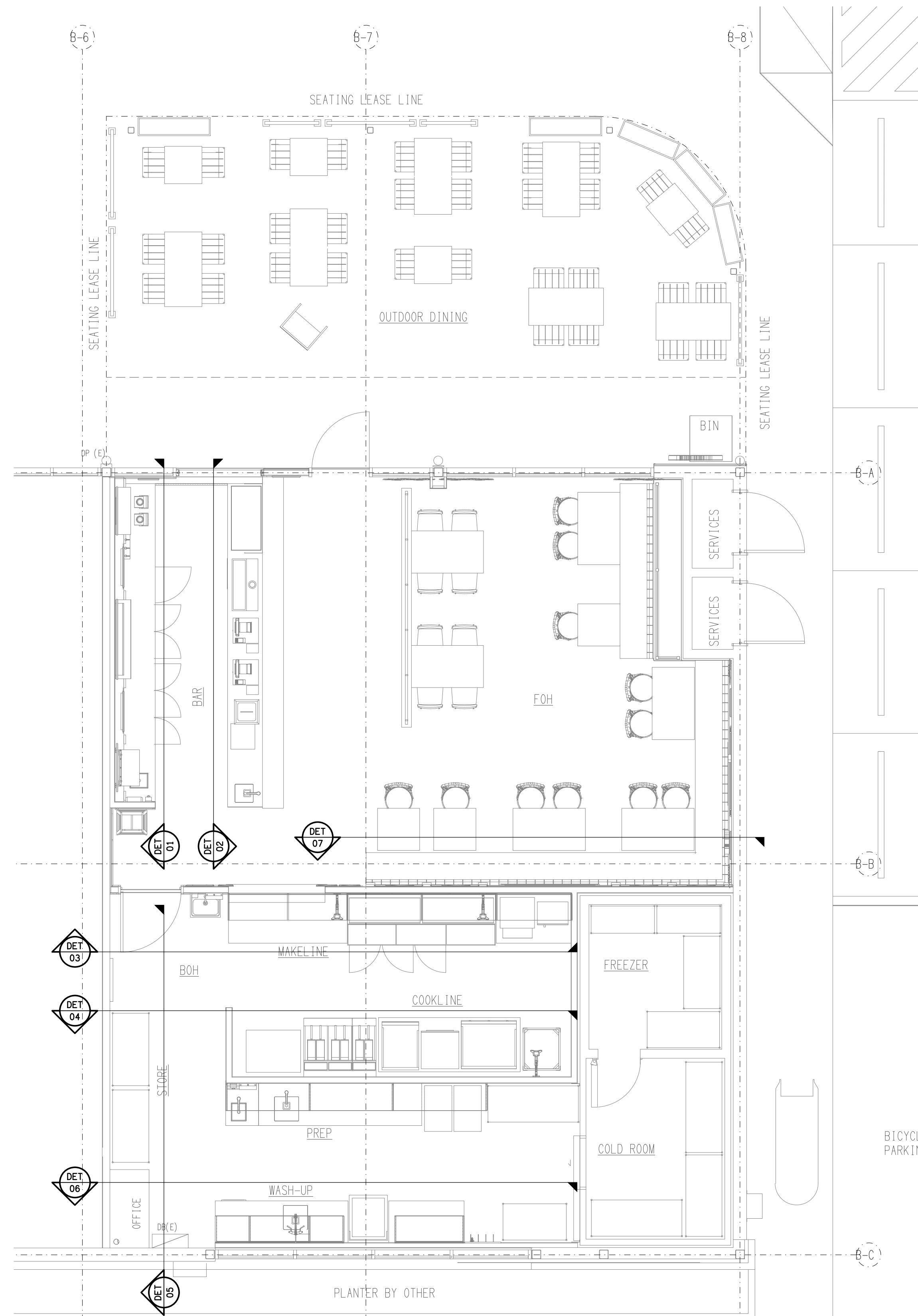
DRAWING TITLE:

**ELECTRICAL SERVICES  
REFLECTED CEILING PLAN**

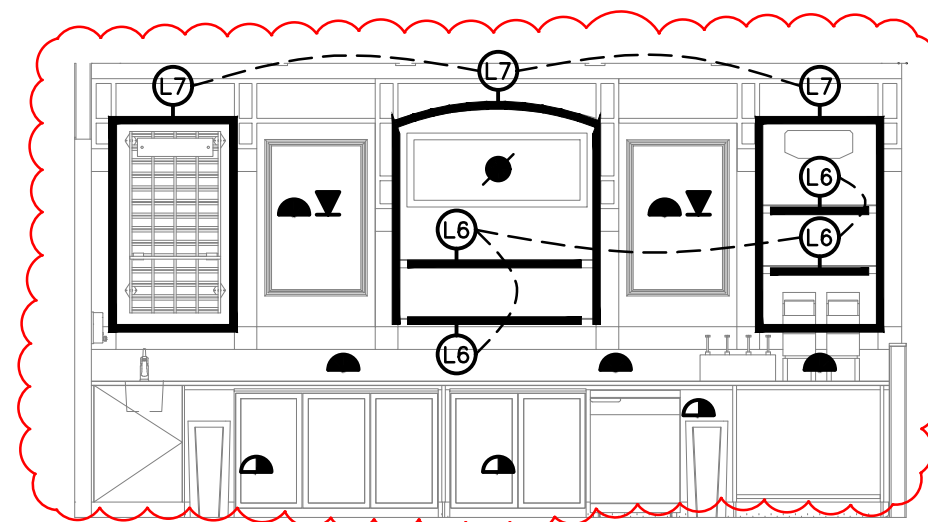
PROJECT NO: DRAWING NO: REVISION:

**C3609a E04 D**

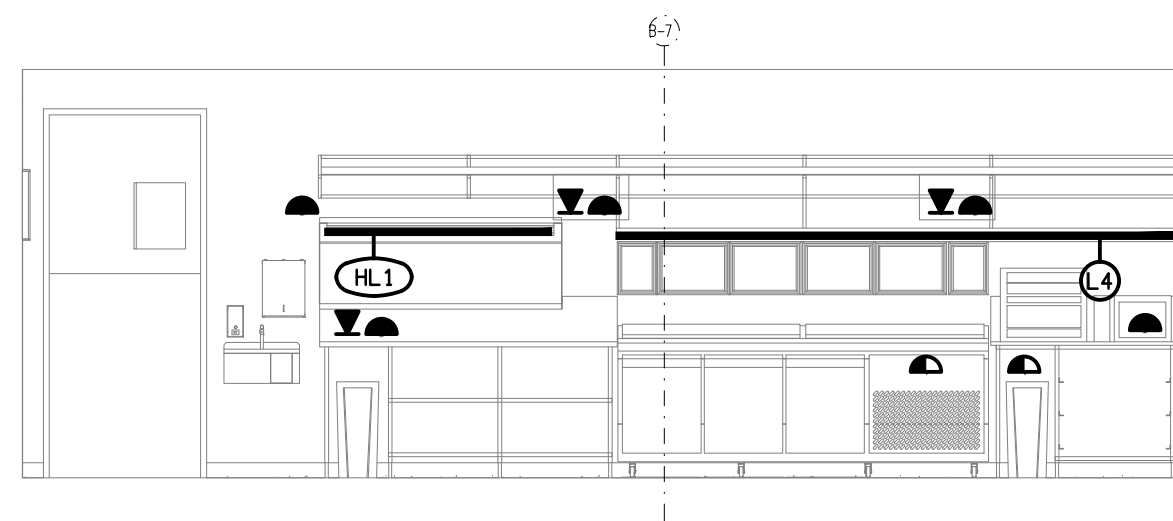




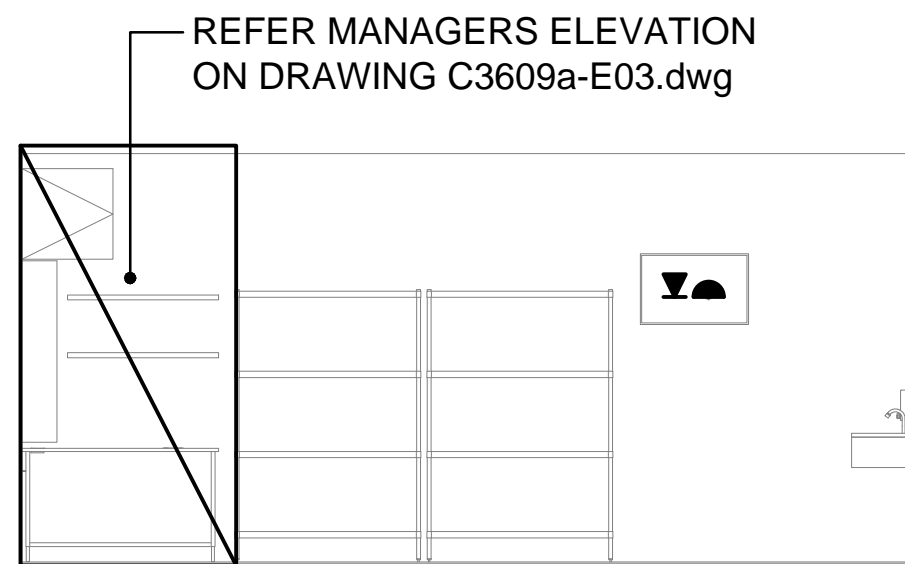
**REFERENCE PLAN**  
BURGER URGE TENANCY  
SCALE 1:50



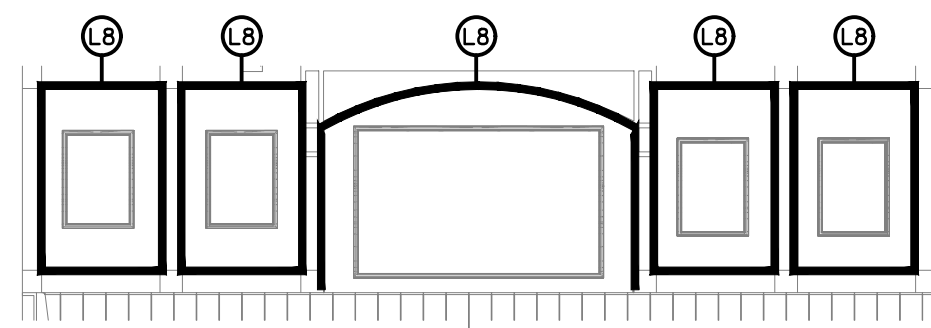
**DETAIL 01**  
BAR REAR WALL ELEVATION  
SCALE 1:50



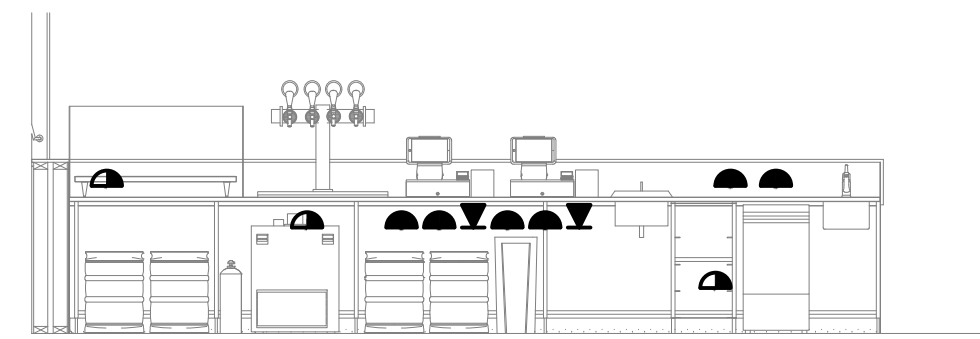
**DETAIL 03**  
BOH MAKELINE ELEVATION  
SCALE 1:50



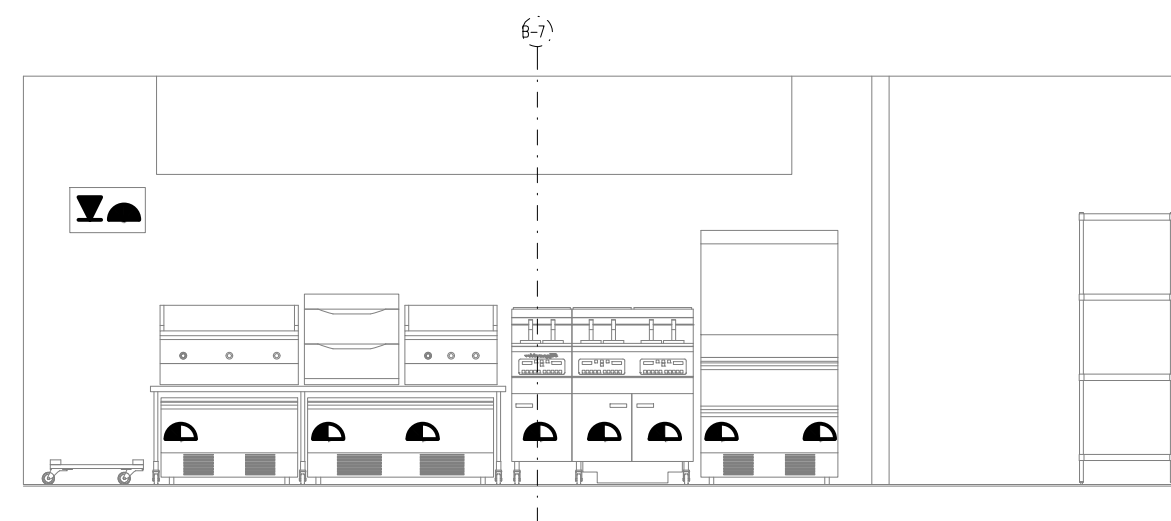
**DETAIL 05**  
BOH MANAGER DESK ELEVATION  
SCALE 1:50



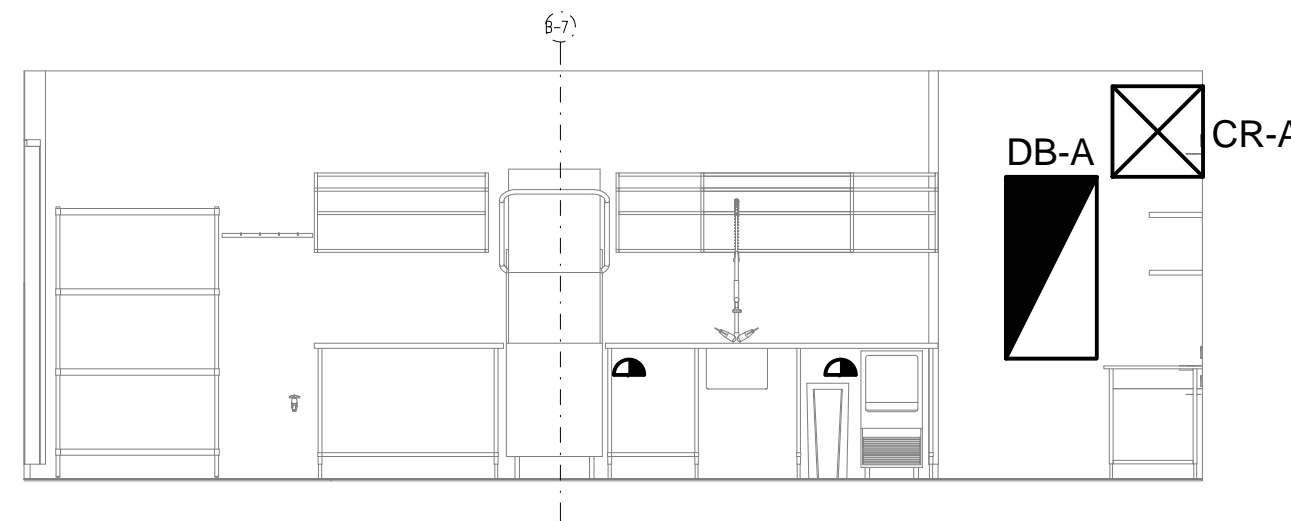
**DETAIL 07**  
FOH DINING FEATURE WALL 1 ELEVATION  
SCALE 1:50



**DETAIL 02**  
BAR COUNTER ELEVATION  
SCALE 1:50



**DETAIL 04**  
BOH COOKLINE ELEVATION  
SCALE 1:50



**DETAIL 06**  
BOH WASH UP ELEVATION  
SCALE 1:50

THE COPYRIGHT OF THIS DRAWING REMAINS THE PROPERTY OF THE ELECTRICAL DESIGN GROUP.

USE FIGURED DIMENSIONS IN PREFERENCE TO SCALE.

ALL DIMENSIONS TO BE VERIFIED ONSITE.

**BURGER URGE**

D	TENDER	22/08/2025
REV:	DESCRIPTION:	DATE:

**ELECTRICAL DESIGN GROUP**  
ELECTRICAL BUILDING SERVICES CONSULTANTS

BRISBANE: P.O. Box 15 Sherwood Qld 4075  
Phone: (07) 3278 4375  
Email: brisbane@edg.net.au  
Web: www.edg.net.au

ELECTRICAL DESIGN GROUP BRISBANE PTY LTD  
ACN 092 710 793

TRADING AS:  
ELECTRICAL DESIGN  
GROUP

PROJECT:

**BURGER URGE  
BURPENGARY EAST**

SITE ADDRESS:

TENANCY 12, 122 BUCKLEY ROAD,  
137 & 143 ULHMANN ROAD,  
BURPENGARY EAST, QUEENSLAND

SCALE: SHEET SIZE:

1:50 AT A1

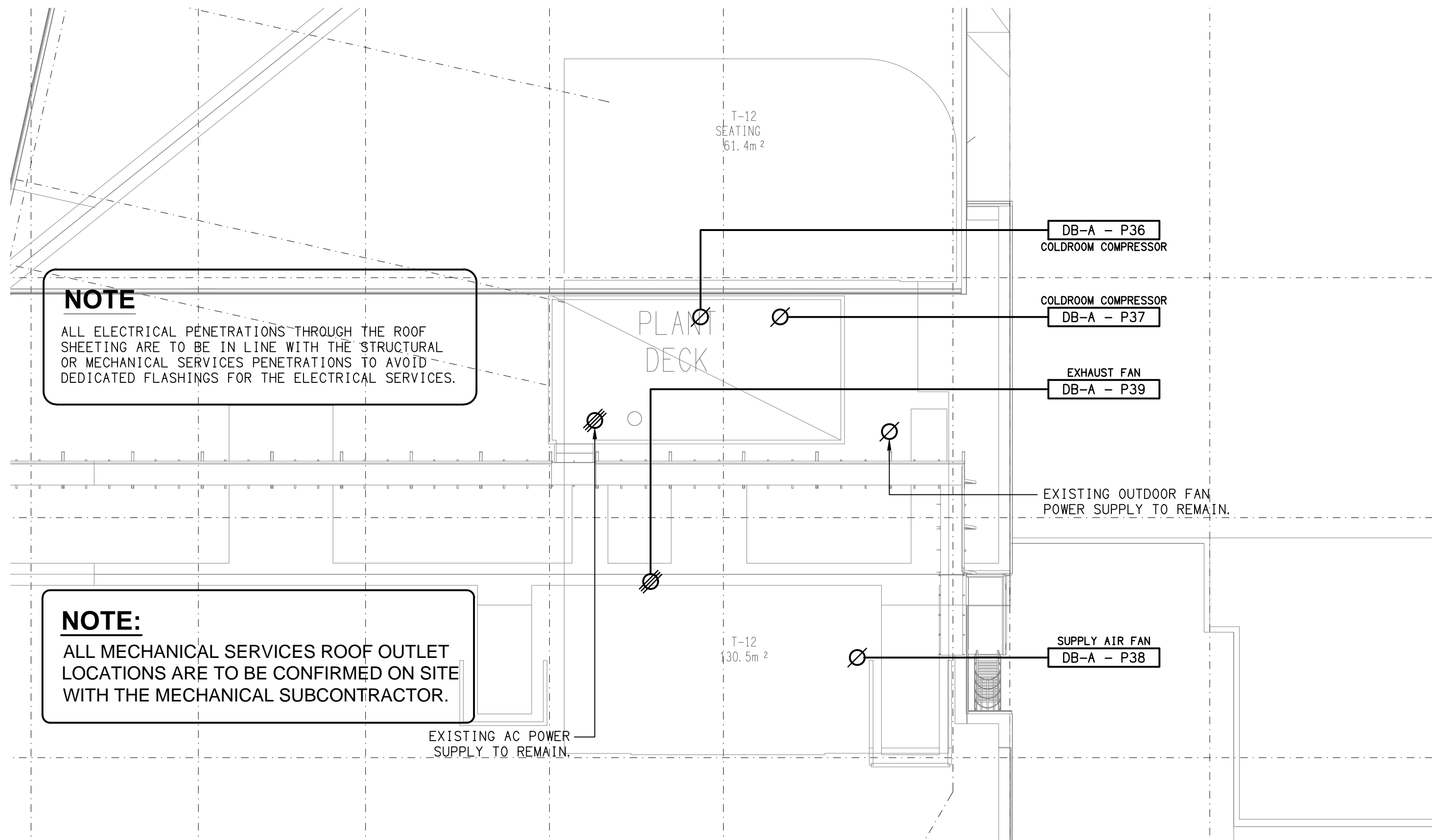
DRAWING TITLE:

**ELECTRICAL SERVICES  
DETAIL ELEVATIONS**

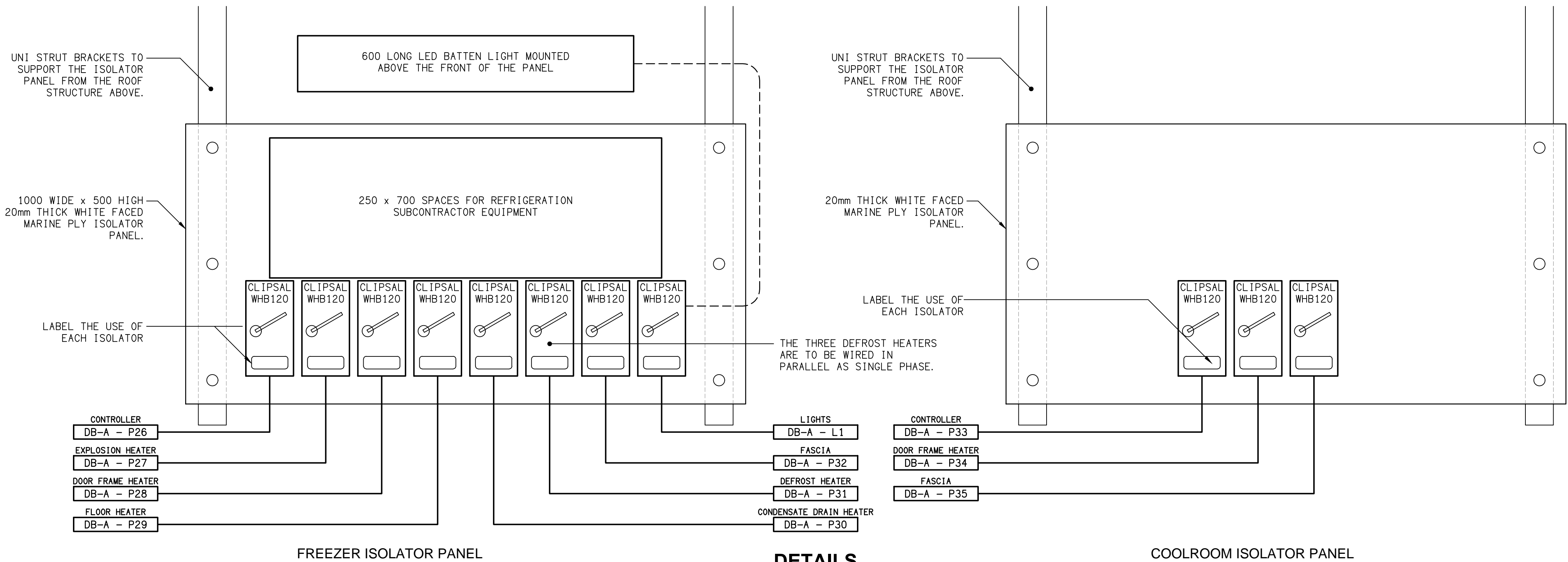
PROJECT NO: DRAWING NO: REVISION:

**C3609a E05 D**

**BURGER URGE**



**ROOF PLAN**  
BURGER URGE TENANCY  
SCALE 1:100



**NOTE:**  
LOCATE THE ELECTRICAL ISOLATOR PANELS IN THE CEILING SPACE ABOVE THE ENTRY DOORS OF THE FREEZER AND COOLROOMS. CEILING ACCESS PANEL TO BE PROVIDED BY THE BUILDER.

**DETAILS**  
ISOLATOR PANEL ELEVATIONS  
NOT TO SCALE

B	TENDER	20/08/2025
REV:	DESCRIPTION:	DATE:

**ELECTRICAL DESIGN GROUP**  
ELECTRICAL BUILDING SERVICES CONSULTANTS

BRISBANE: P.O. Box 15, Sherwood Qld 4075  
Phone: (07) 3278 4375  
Email: brisbane@edg.net.au  
Web: www.edg.net.au

ELECTRICAL DESIGN GROUP BRISBANE PTY LTD  
ACN 092 710 793

TRADING AS:  
ELECTRICAL DESIGN GROUP

PROJECT:

**BURGER URGE  
BURPENGARY EAST**

SITE ADDRESS:

TENANCY 12, 122 BUCKLEY ROAD,  
137 & 143 ULMANN ROAD,  
BURPENGARY EAST, QUEENSLAND

SCALE: SHEET SIZE:

1:100 UNO AT A1

DRAWING TITLE:

**ELECTRICAL SERVICES  
ROOF PLAN & DETAILS**

PROJECT NO: DRAWING NO: REVISION:

**C3609a E06 B**