



ELECTRICAL DESIGN GROUP

ELECTRICAL BUILDING SERVICES CONSULTANTS

P.O. Box 15, SHERWOOD Q. 4075

Phone: (07) 3278 4375

Website: www.edg.net.au Email: brisbane@edg.net.au

C3637a - YAMANTO TAVERN

C3637a-0001(B).xls

ELECTRICAL SERVICES CONTRACT DOCUMENT SCHEDULE

REVISION B - 05 NOVEMBER 2025

ISSUING INFORMATION				DATE OF ISSUE							
	DAY	MONTH	YEAR	23	05						
				10	11						
				25	25						
				P	T						
A = APPROVAL		C = CONSTRUCTION		N = COORDINATION		P = PRELIMINARY		T = TENDER			

DISTRIBUTION				NUMBER OF COPIES							
WWW.EDG.NET.AU				1E	1E						
CAYAS & WARD				1E	1E						
P = PRINT				T = TRACING				D = DISC			
				E = EMAIL				F = FAX			

DOCUMENTS		REVISION									
C3637a-E01.dwg	LEGEND & DETAILS	A	B								
C3637a-E02.dwg	NOTES	A	B								
C3637a-E03.dwg	FLOOR PLAN	A	B								
C3637a-E04.dwg	GAMING ROOM FLOOR PLAN	A	B								
C3637a-E05.dwg	REFLECTED CEILING PLAN	A	B								
C3637a-E06.dwg	JOINERY & WALL LIGHTING PLAN	A	B								
C3637a-E07.dwg	JOINERY & WALL LIGHTING DETAILS	A	B								
C3637a-E08.dwg	EXTERNAL BUILDING ELEVATIONS	A	B								
C3637a-0001.xls	CONTRACT DOCUMENT SCHEDULE	A	B								
C3637a-0002.xls	EQUIPMENT SCHEDULE	A	B								
C3637a-0004.xls	LIGHTING CONTROL SCHEDULE	A	B								
C3637a-0005.xls	DISTRIBUTION BOARD DB-A SCHEDULE	A	B								



ELECTRICAL DESIGN GROUP

ELECTRICAL BUILDING SERVICES CONSULTANTS

P.O. Box 15, SHERWOOD Q. 4075

Phone: (07) 3278 4375 Fax: (07) 3716 0222

Web Site: www.edg.net.au Email: brisbane@edg.net.au

C3637a - YAMANTO TAVERN

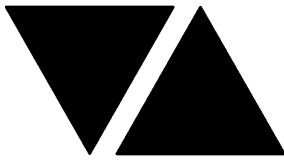
C3637a-0002(B).xls

ELECTRICAL EQUIPMENT SCHEDULE

REVISION B - 04 NOVEMBER 2025

THE LIGHT FITTING SUPPLIER CONTACT DETAILS MAY BE AVAILABLE ON THE EDG WEBSITE VIA THE FOLLOWING LINK
www.edg.net.au/Links/Lighting.htm

TYPE	LAMPS	DESCRIPTION	COLOUR / ACCESSORY	CATALOGUE No	REV
S1	10W/M 3000K LED	IP67 LED FLEX SCREW FIXED RECESSED ONTO THE BAR FRONT PELMET AS PER THE ARCHITECTURAL DETAIL. PROVIDE THE STRIP WITH REMOTE DALI DIMMABLE POWER SUPPLIES AS REQUIRED LOCATE THE POWER SUPPLIES IN A CONCEALED ACCESSIBLE POSITION NOTED ON THE AS CONSTRUCTED DOCUMENTS. CONFIRM THE BEND PLANE (TOP OR SIDE) ON SITE WITH THE ARCHITECT.	WHITE	RAPID LED R2321 OR R2322 + POWER SUPPLY & DALI CONTROLLER	A
S2	14.4W/M 3000K LED	LED STRIP WITHIN A SCREW FIXED EXTRUSION C/W DIFFUSER WITHIN THE BAR FRONT FEATURE AS PER THE ELEVATION. MOUNT AS PER THE ARCHITECTURAL DETAIL. PROVIDE THE STRIP WITH REMOTE DALI DIMMABLE POWER SUPPLIES AS REQUIRED LOCATE THE POWER SUPPLIES IN A CONCEALED ACCESSIBLE POSITION NOTED ON THE AS CONSTRUCTED DOCUMENTS.	NATURAL	RAPID LED R2334 PLUS ALUMINIUM EXTRUSION AND POWER SUPPLY & DALI CONTROLLER	A
S3	10W/M 3000K LED	IP67 LED FLEX SCREW FIXED RECESSED ONTO THE REAR BAR JOINERY AS PER THE ELEVATION. MOUNT AS PER THE ARCHITECTURAL DETAIL. PROVIDE THE STRIP WITH REMOTE DALI DIMMABLE POWER SUPPLIES AS REQUIRED LOCATE THE POWER SUPPLIES IN A CONCEALED ACCESSIBLE POSITION NOTED ON THE AS CONSTRUCTED DOCUMENTS. CONFIRM THE BEND PLANE (TOP OR SIDE) ON SITE WITH THE ARCHITECT.	WHITE	RAPID LED R2321 OR R2322 + POWER SUPPLY & DALI CONTROLLER	A
S4	10W/M 3000K LED	IP67 LED FLEX SCREW FIXED RECESSED ONTO THE REAR BAR JOINERY AS PER THE ELEVATION. MOUNT AS PER THE ARCHITECTURAL DETAIL. PROVIDE THE STRIP WITH REMOTE DALI DIMMABLE POWER SUPPLIES AS REQUIRED LOCATE THE POWER SUPPLIES IN A CONCEALED ACCESSIBLE POSITION NOTED ON THE AS CONSTRUCTED DOCUMENTS. CONFIRM THE BEND PLANE (TOP OR SIDE) ON SITE WITH THE ARCHITECT.	WHITE	RAPID LED R2321 OR R2322 + POWER SUPPLY & DALI CONTROLLER	A
S5	14.4W/M 3000K LED	LED STRIP WITHIN A SCREW FIXED EXTRUSION C/W DIFFUSER MOUNTED ON TOP OF THE SHELF AS PER THE ARCHITECTIAL DETAIL. PROVIDE THE STRIP WITH REMOTE DALI DIMMABLE POWER SUPPLIES AS REQUIRED LOCATE THE POWER SUPPLIES IN A CONCEALED ACCESSIBLE POSITION NOTED ON THE AS CONSTRUCTED DOCUMENTS.	NATURAL	RAPID LED R2334 PLUS ALUMINIUM EXTRUSION AND POWER SUPPLY & DALI CONTROLLER	B



ELECTRICAL DESIGN GROUP

ELECTRICAL BUILDING SERVICES CONSULTANTS

P.O. Box 15, SHERWOOD Q. 4075

Phone: (07) 3278 4375 Fax: (07) 3716 0222

Web Site: www.edg.net.au Email: brisbane@edg.net.au

C3637a - YAMANTO TAVERN

C3637a-0002(B).xls

ELECTRICAL EQUIPMENT SCHEDULE

REVISION B - 04 NOVEMBER 2025

THE LIGHT FITTING SUPPLIER CONTACT DETAILS MAY BE AVAILABLE ON THE EDG WEBSITE VIA THE FOLLOWING LINK
www.edg.net.au/Links/Lighting.htm

TYPE	LAMPS	DESCRIPTION	COLOUR / ACCESSORY	CATALOGUE No	REV
S6	14.4W/M 3000K LED	LED STRIP WITHIN A SCREW FIXED EXTRUSION C/W DIFFUSER AS PER THE ARCHITECTURAL DETAIL. PROVIDE THE STRIP WITH REMOTE DALI DIMMABLE POWER SUPPLIES AS REQUIRED LOCATE THE POWER SUPPLIES IN A CONCEALED ACCESSIBLE POSITION NOTED ON THE AS CONSTRUCTED DOCUMENTS.	NATURAL	RAPID LED R2334 PLUS ALUMINIUM EXTRUSION AND POWER SUPPLY & DALI CONTROLLER	A
S7	14.4W/M 3000K LED	LED STRIP WITHIN A SCREW FIXED EXTRUSION C/W DIFFUSER BEHIND THE SIGN AS PER THE ELEVATION. MOUNT AS PER THE ARCHITECTURAL DETAIL. PROVIDE THE STRIP WITH REMOTE DALI DIMMABLE POWER SUPPLIES AS REQUIRED LOCATE THE POWER SUPPLIES IN A CONCEALED ACCESSIBLE POSITION NOTED ON THE AS CONSTRUCTED DOCUMENTS.	NATURAL	RAPID LED R2334 PLUS ALUMINIUM EXTRUSION AND POWER SUPPLY & DALI CONTROLLER	A
S8	14W/M 3000K LED	LED STRIP TAPE FIXED TO THE REAR OF THE TV VIA DOUBLE SIDED HEAT RESISTANT TAPE. PROVIDE THE STRIP WITH REMOTE DALI DIMMABLE POWER SUPPLIES AS REQUIRED LOCATE THE POWER SUPPLIES IN A CONCEALED ACCESSIBLE POSITION NOTED ON THE AS CONSTRUCTED DOCUMENTS.	WHITE	RAPID LED R2334 AND POWER SUPPLY & DALI CONTROLLER	A
S9	10W/M 3000K LED	IP67 LED FLEX STRIP WITHIN A SCREW FIXED EXTRUSION C/W DIFFUSER BEHIND THE MIRROR AS PER THE ELEVATION. MOUNT AS PER THE ARCHITECTURAL DETAIL. PROVIDE THE STRIP WITH REMOTE DALI DIMMABLE POWER SUPPLIES AS REQUIRED LOCATE THE POWER SUPPLIES IN A CONCEALED ACCESSIBLE POSITION NOTED ON THE AS CONSTRUCTED DOCUMENTS. ONFIRM THE BEND PLANE (TOP OR SIDE) ON SITE WITH THE ARCHITECT.	NATURAL	RAPID LED R2321 OR R2322 + POWER SUPPLY & DALI CONTROLLER	B
S10	NO LONGER REQUIRED				A
S11	14.4W/M 3000K LED	LED STRIP WITHIN A SCREW FIXED EXTRUSION C/W DIFFUSER RECESSED INTO THE CEILING FEATURE AS PER THE ARCHITECTURAL DETAIL. PROVIDE THE STRIP WITH REMOTE DALI DIMMABLE POWER SUPPLIES AS REQUIRED LOCATE THE POWER SUPPLIES IN A CONCEALED ACCESSIBLE POSITION NOTED ON THE AS CONSTRUCTED DOCUMENTS.	NATURAL	RAPID LED R2334 PLUS ALUMINIUM EXTRUSION AND POWER SUPPLY & DALI CONTROLLER	A



ELECTRICAL DESIGN GROUP

ELECTRICAL BUILDING SERVICES CONSULTANTS

P.O. Box 15, SHERWOOD Q. 4075

Phone: (07) 3278 4375 Fax: (07) 3716 0222

Web Site: www.edg.net.au Email: brisbane@edg.net.au

C3637a - YAMANTO TAVERN

C3637a-0002(B).xls

ELECTRICAL EQUIPMENT SCHEDULE

REVISION B - 04 NOVEMBER 2025

THE LIGHT FITTING SUPPLIER CONTACT DETAILS MAY BE AVAILABLE ON THE EDG WEBSITE VIA THE FOLLOWING LINK
www.edg.net.au/Links/Lighting.htm

TYPE	LAMPS	DESCRIPTION	COLOUR / ACCESSORY	CATALOGUE No	REV
S12	10W/M 3000K LED	IP67 LED FLEX SCREW FIXED ONTO THE LEADING EDGE OF THE FACIA AS PER THE ARCHITECTURAL DETAIL. PROVIDE THE STRIP WITH REMOTE DALI DIMMABLE POWER SUPPLIES AS REQUIRED LOCATE THE POWER SUPPLIES IN A CONCEALED ACCESSIBLE POSITION NOTED ON THE AS CONSTRUCTED DOCUMENTS. CONFIRM THE BEND PLANE (TOP OR SIDE) ON SITE WITH THE ARCHITECT.	WHITE	RAPID LED R2321 OR R2322 + POWER SUPPLY & DALI CONTROLLER	A
S13	10W/M 3000K LED	IP67 LED FLEX SCREW FIXED ONTO THE LEADING EDGE AS PER THE ARCHITECTURAL DETAIL. PROVIDE THE STRIP WITH REMOTE DALI DIMMABLE POWER SUPPLIES AS REQUIRED LOCATE THE POWER SUPPLIES IN A CONCEALED ACCESSIBLE POSITION NOTED ON THE AS CONSTRUCTED DOCUMENTS. CONFIRM THE BEND PLANE (TOP OR SIDE) ON SITE WITH THE ARCHITECT.	WHITE	RAPID LED R2321 OR R2322 + POWER SUPPLY & DALI CONTROLLER	A
S14	10W/M 3000K LED	IP67 LED FLEX SCREW FIXED ONTO THE ENTRY PORTAL AS PER THE PLAN AND ELEVATION. MOUNT AS PER ARCHITECTURAL DETAIL. PROVIDE THE STRIP WITH REMOTE DALI DIMMABLE POWER SUPPLIES AS REQUIRED LOCATE THE POWER SUPPLIES IN A CONCEALED ACCESSIBLE POSITION NOTED ON THE AS CONSTRUCTED DOCUMENTS. CONFIRM THE BEND PLANE (TOP OR SIDE) ON SITE WITH THE ARCHITECT.	WHITE	RAPID LED R2321 OR R2322 + POWER SUPPLY & DALI CONTROLLER	A
S15	10W/M 3000K LED	IP67 LED FLEX SCREW FIXED RECESSED ONTO THE BAR FRONT PELMET AS PER THE ARCHITECTURAL DETAIL. PROVIDE THE STRIP WITH REMOTE DALI DIMMABLE POWER SUPPLIES AS REQUIRED LOCATE THE POWER SUPPLIES IN A CONCEALED ACCESSIBLE POSITION NOTED ON THE AS CONSTRUCTED DOCUMENTS. CONFIRM THE BEND PLANE (TOP OR SIDE) ON SITE WITH THE ARCHITECT.	WHITE	RAPID LED R2321 OR R2322 + POWER SUPPLY & DALI CONTROLLER	A
S16	10W/M 3000K LED	IP67 LED FLEX SCREW FIXED ONTO THE GAMING CEILING. PROVIDE THE STRIP WITH REMOTE DALI DIMMABLE POWER SUPPLIES AS REQUIRED LOCATE THE POWER SUPPLIES IN A CONCEALED ACCESSIBLE POSITION NOTED ON THE AS CONSTRUCTED DOCUMENTS. CONFIRM THE BEND PLANE (TOP OR SIDE) ON SITE WITH THE ARCHITECT.	WHITE	RAPID LED R2321 OR R2322 + POWER SUPPLY & DALI CONTROLLER	A
S17	14.4W/M 3000K LED	LED STRIP WITHIN A SCREW FIXED EXTRUSION C/W DIFFUSER WITHIN THE CEILING CURTAIN PELMET AS PER THE ARCHITECTURAL MOUNTING DETAIL. PROVIDE THE STRIP WITH REMOTE DALI DIMMABLE POWER SUPPLIES AS REQUIRED LOCATE THE POWER SUPPLIES IN A CONCEALED ACCESSIBLE POSITION NOTED ON THE AS CONSTRUCTED DOCUMENTS.	NATURAL	RAPID LED R2334 PLUS ALUMINIUM EXTRUSION AND POWER SUPPLY & DALI CONTROLLER	A



ELECTRICAL DESIGN GROUP

ELECTRICAL BUILDING SERVICES CONSULTANTS

P.O. Box 15, SHERWOOD Q. 4075

Phone: (07) 3278 4375 Fax: (07) 3716 0222

Web Site: www.edg.net.au Email: brisbane@edg.net.au

C3637a - YAMANTO TAVERN

C3637a-0002(B).xls

ELECTRICAL EQUIPMENT SCHEDULE

REVISION B - 04 NOVEMBER 2025

THE LIGHT FITTING SUPPLIER CONTACT DETAILS MAY BE AVAILABLE ON THE EDG WEBSITE VIA THE FOLLOWING LINK
www.edg.net.au/Links/Lighting.htm

TYPE	LAMPS	DESCRIPTION	COLOUR / ACCESSORY	CATALOGUE No	REV
S18	10W/M 3000K LED	TWO RUNS OF IP67 LED FLEX SCREW FIXED INTO POSITION. ONE TO THE OUTSIDE OF THE PLANTER AND ONE TO THE INSIDE EDGE OF THE PLANTER AS PER THE ARCHITECTURAL DETAIL. PROVIDE THE STRIP WITH REMOTE DALI DIMMABLE POWER SUPPLIES AS REQUIRED LOCATE THE POWER SUPPLIES IN A CONCEALED ACCESSIBLE POSITION NOTED ON THE AS CONSTRUCTED DOCUMENTS. CONFIRM THE BEND PLANE (TOP OR SIDE) ON SITE WITH THE ARCHITECT.	WHITE	RAPID LED R2321 OR R2322 + POWER SUPPLY & DALI CONTROLLER	A
S19	10W/M 3000K LED	IP67 LED FLEX SCREW FIXED RECESSED ONTO THE OUTSIDE EDGE OF THE PLANTER AS PER THE ARCHITECTURAL DETAIL. PROVIDE THE STRIP WITH REMOTE DALI DIMMABLE POWER SUPPLIES AS REQUIRED LOCATE THE POWER SUPPLIES IN A CONCEALED ACCESSIBLE POSITION NOTED ON THE AS CONSTRUCTED DOCUMENTS. CONFIRM THE BEND PLANE (TOP OR SIDE) ON SITE WITH THE ARCHITECT.	WHITE	RAPID LED R2321 OR R2322 + POWER SUPPLY & DALI CONTROLLER	B
S20	10W/M 3000K LED	TWO RUNS OF IP67 LED FLEX SCREW FIXED INTO POSITION FOR THE FULL HEIGHT OF THE COLUMN. ONE STRIP TO EACH SIDE OF THE COLUMN AS PER THE ARCHITECTURAL DETAIL. PROVIDE THE STRIP WITH REMOTE DALI DIMMABLE POWER SUPPLIES AS REQUIRED LOCATE THE POWER SUPPLIES IN A CONCEALED ACCESSIBLE POSITION NOTED ON THE AS CONSTRUCTED DOCUMENTS. CONFIRM THE BEND PLANE (TOP OR SIDE) ON SITE WITH THE ARCHITECT.	WHITE	RAPID LED R2321 OR R2322 + POWER SUPPLY & DALI CONTROLLER	
S21	14.4W/M 3000K LED	REPLACE THE EXISTING COFFER LIGHTING WITH A LED STRIP WITHIN A SCREW FIXED EXTRUSION C/W DIFFUSER. PROVIDE THE STRIP WITH REMOTE DALI DIMMABLE POWER SUPPLIES AS REQUIRED LOCATE THE POWER SUPPLIES IN A CONCEALED ACCESSIBLE POSITION NOTED ON THE AS CONSTRUCTED DOCUMENTS.	NATURAL	RAPID LED R2334 PLUS ALUMINIUM EXTRUSION AND POWER SUPPLY & DALI CONTROLLER	A
S22	10W/M 3000K LED	IP67 LED FLEX SCREW FIXED ONTO THE ENTRY PORTAL AS PER THE PLAN AND ELEVATION. MOUNT AS PER ARCHITECTURAL DETAIL. PROVIDE THE STRIP WITH REMOTE DALI DIMMABLE POWER SUPPLIES AS REQUIRED LOCATE THE POWER SUPPLIES IN A CONCEALED ACCESSIBLE POSITION NOTED ON THE AS CONSTRUCTED DOCUMENTS. CONFIRM THE BEND PLANE (TOP OR SIDE) ON SITE WITH THE ARCHITECT.	WHITE	RAPID LED R2321 OR R2322 + POWER SUPPLY & DALI CONTROLLER	A
S23	10W/M 3000K LED	IP67 LED FLEX SCREW FIXED UNDER THE VANITY BENCH AS PER THE ARCHITECTURAL DETAIL. PROVIDE THE STRIP WITH REMOTE DALI DIMMABLE POWER SUPPLIES AS REQUIRED LOCATE THE POWER SUPPLIES IN A CONCEALED ACCESSIBLE POSITION NOTED ON THE AS CONSTRUCTED DOCUMENTS. CONFIRM THE BEND PLANE (TOP OR SIDE) ON SITE WITH THE ARCHITECT.	WHITE	RAPID LED R2321 OR R2322 + POWER SUPPLY & DALI CONTROLLER	B



ELECTRICAL DESIGN GROUP

ELECTRICAL BUILDING SERVICES CONSULTANTS

P.O. Box 15, SHERWOOD Q. 4075

Phone: (07) 3278 4375 Fax: (07) 3716 0222

Web Site: www.edg.net.au Email: brisbane@edg.net.au

C3637a - YAMANTO TAVERN

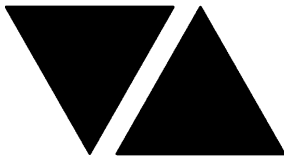
C3637a-0002(B).xls

ELECTRICAL EQUIPMENT SCHEDULE

REVISION B - 04 NOVEMBER 2025

THE LIGHT FITTING SUPPLIER CONTACT DETAILS MAY BE AVAILABLE ON THE EDG WEBSITE VIA THE FOLLOWING LINK
www.edg.net.au/Links/Lighting.htm

TYPE	LAMPS	DESCRIPTION	COLOUR / ACCESSORY	CATALOGUE No	REV
PD01	6 X TRAILING EDGE DIMMABLE 240 VOLT 2700K E14 LED 250 LUMENS +/- 10%	700DIA X 600 HIGH DECORATIVE PENDANT. CONFIRM THE SUSPENSION HEIGHT ONSITE WITH THE ARCHITECT	BRASS	FAT SHACK SKU P1391-SBS-6LT	A
PD02	TRAILING EDGE DIMMABLE 240 VOLT 2200K B22 ST64 LED 250 LUMENS +/- 10% 15,000 HOUR LIFE LAMP	340DIA DECORATIVE PENDANT. CONFIRM THE SUSPENSION HEIGHT ONSITE WITH THE ARCHITECT	GOLD BRAID ROUND RUST	FAT SHACK SKU P205- RNDG-LRG-RUS	A
PD03	8 X TRAILING EDGE DIMMABLE 240 VOLT 2700K E14 LED 250 LUMENS +/- 10%	850DIA X 250 HIGH DECORATIVE PENDANT. CONFIRM THE SUSPENSION HEIGHT ONSITE WITH THE ARCHITECT	BRASS	ZEST LIGHTING ELDEN 8 LIGHT BRASS HAND CRAFTED	A
PD04	TRAILING EDGE DIMMABLE 240 VOLT 2200K E27 A60 LED 250 LUMENS +/- 10% 15,000 HOUR LIFE LAMP	800DIA DECORATIVE PENDANT. CONFIRM THE SUSPENSION HEIGHT ONSITE WITH THE ARCHITECT	BLACK & BRASS	FAT SHACK SKU P1299-BLK-LRG	A
PD05	TRAILING EDGE DIMMABLE 240 VOLT 2200K E27 A60 LED 250 LUMENS +/- 10% 15,000 HOUR LIFE LAMP	220DIA X 390H DECORATIVE PENDANT. CONFIRM THE SUSPENSION HEIGHT ONSITE WITH THE ARCHITECT	TIMBER & BLACK	ZEST LIGHTING SCANDI SMALL BLACK 22 PENDANT LIGHT	A
TL01	9W 3000K LED PER FITTING	SURFACE TRACK C/W FITTINGS AS INDICATED PROVIDE EACH TRACK WITH A REMOTE DALI DIMMABLE DRIVER LOCATED IN A CONCEALED ACCESSIBLE POSITION NOTED ON THE AS CONSTRUCTED DOCUMENTS.	BLACK	LUMEN 8 NIX 45 TRACK AND SOLIS SON145TK09930 FITTINGS DALI DIMMABLE	A
WL01	TRAILING EDGE DIMMABLE 240 VOLT 2700K 400LUMEN +/-10% E27 LED	DECORATIVE 220X260 WALL LIGHT MOUNTED AS PER THE ARCHITECTURAL DETAILS	BRASS	FAT SHACK SKU W760-SBS	A
WL02	2 Z 4.5W 2700K LED	DECORATIVE WALL LIGHT C/W INTEGRAL DRIVER MOUNTED AS PER THE ARCHITECTURAL DETAILS	BLACK	ZEST LIGHTING CURTIZ BLACK UP AND DOWN	A
WL03	3000K LED	ALLOW TO INSTALL THE EXTERNAL WALL LIGHT. ALLOW A PC SUM FOR HE SUPPLY.	BLACK	ALLOW A PC SUM OF \$500.00 PLUS GST FOR THE SUPPLY OF EACH WL03 FITTING	B
RD01	12W 3000K LED	RECESSED DOWNLIGHT C/W 24 DEG BEAM REMOTE DALI DIMMABLE DRIVER	WHITE	RAPID R1077-WH- 12W-WW-DALI	A



ELECTRICAL DESIGN GROUP

ELECTRICAL BUILDING SERVICES CONSULTANTS

P.O. Box 15, SHERWOOD Q. 4075

Phone: (07) 3278 4375 Fax: (07) 3716 0222

Web Site: www.edg.net.au Email: brisbane@edg.net.au

C3637a - YAMANTO TAVERN

C3637a-0002(B).xls

ELECTRICAL EQUIPMENT SCHEDULE

REVISION B - 04 NOVEMBER 2025

THE LIGHT FITTING SUPPLIER CONTACT DETAILS MAY BE AVAILABLE ON THE EDG WEBSITE VIA THE FOLLOWING LINK
www.edg.net.au/Links/Lighting.htm

TYPE	LAMPS	DESCRIPTION	COLOUR / ACCESSORY	CATALOGUE No	REV
RD02	13W 3000K LED	RECESSED ADJUSTABLE DOWNLIGHT C/W REMOTE DALI DIMMABLE DRIVER	BLACK	EQUAL TO GAMMA ILLUMINATION KHO 1002-3K-13W	A
RD03	12W 3000K LED	RECESSED DOWNLIGHT C/W 24 DEG BEAM REMOTE DALI DIMMABLE DRIVER	BLACK	RAPID R1077-WH-12W-WW-DALI BLACK	A
RD04	EXISTING LIGHT FITTING TO BE RETAINED AND RESUPPLIED AS INDICATED. WITHIN ONE WEEK OF BEING AWARDED THE CONTRACT CONFIRM THE EXISTING LAMP TYPE AND CONTROL TYPE AS TRAILING EDGE, LEADING EDGE, DSI, 0-10, DALI OR SWITCHED.				A
SL01	13W 3000K LED	SURFACE MOUNTED DOWNLIGHT C/W INTEGRAL DALI DIMMABLE DRIVER	BLACK	EQUAL TO GAMMA ILLUMINATION TUBO 1101-FL-3K-13W	A
SL02	3000K LED	ALLOW TO INSTALL THE SURFACE MOUNTED FITTING. ALLOW A PC SUM FOR HE SUPPLY.	BLACK	ALLOW A PC SUM OF \$500.00 PLUS GST FOR THE SUPPLY OF EACH SL01 FITTING	B
GL01	5W 3000K LED	GARDEN ELV SPIKE DOWNLIGHT LIGHT. PROVIDE EACH GROUP OF GL01 FITTINGS WITH A REMOTE COMMON DALI DIMMABLE DRIVER. LOCATE DRIVER /POWER SUPPLY IN A CONCEALED ACCESSIBLE POSITION NOTED ON THE AS CONSTRUCTED DOCUMENTS.	BLACK	RAPID LED SPIKE 5	A
GL02	3000K LED	ALLOW TO INSTALL THE GARDEN LIGHT. ALLOW A PC SUM FOR HE SUPPLY.	BLACK	ALLOW A PC SUM OF \$250.00 PLUS GST FOR THE SUPPLY OF EACH GL02 FITTING	B
G1	GAMING BASE KICK LED STRIP LIGHTS TO BE PROVIDED AS PART OF THE GAMING BASE AND CONNECTED BY THE GAMING ELECTRICIAN.				A
FE	EXISTING CEILING FAN AND ASSOCIATED CONTROLLER TO BE RETAINED.				A
FS01	1W LED AT 500 CENTRES	FESTOON LIGHTS WITH NEW 24V DC IP65 FESTOON LIGHTING TO BE FIXED TO A 316 STAINLESS STEEL WIRE SUPPORT SYSTEM. SUPPLY THE NEW FESTOON LIGHTS VIA REMOTE DALI DIMMABLE DRIVERS IN A CONCEALED ACCESSIBLE POSITIONS NOTED ON THE AS CONSTRUCTED DOCUMENTS. CONFIRM THE LENGTH AND POSITION ON SITE ENSURE THE FESTOON LIGHTS ARE LOWER THAN THE ADJACENT CEILING FANS	BLACK CABLE AND FIXINGS 316 STAINLESS STEEL SUPPORT AND FIXINGS	FIRE FLY FFC-LS-50-24VE27-BK	A
E1	LED	EMERGENCY LIGHT: RECESSED NON-MAINTAINED EMERGENCY LIGHT. AS2293 CLASSIFICATION C0-D40 - C90-D40.	WHITE	CLEVERTRONICS LLIFE	A

C3637a-0002(B).xls

Pages inc. any attach. 6 of 8



ELECTRICAL DESIGN GROUP

ELECTRICAL BUILDING SERVICES CONSULTANTS

P.O. Box 15, SHERWOOD Q. 4075

Phone: (07) 3278 4375 Fax: (07) 3716 0222

Web Site: www.edg.net.au Email: brisbane@edg.net.au

C3637a - YAMANTO TAVERN

C3637a-0002(B).xls

ELECTRICAL EQUIPMENT SCHEDULE

REVISION B - 04 NOVEMBER 2025

THE LIGHT FITTING SUPPLIER CONTACT DETAILS MAY BE AVAILABLE ON THE EDG WEBSITE VIA THE FOLLOWING LINK
www.edg.net.au/Links/Lighting.htm

TYPE	LAMPS	DESCRIPTION	COLOUR / ACCESSORY	CATALOGUE No	REV
E2		EXISTING EMERGENCY LIGHT TO BE RETAINED AND RESUPPLIED FROM THE NEW DB-A TEST FACILITY			A
E3	LED	EMERGENCY LIGHT: RECESSED NON-MAINTAINED EMERGENCY LIGHT. AS2293 CLASSIFICATION C0-D40 - C90-D40.	BLACK	CLEVERTRONICS LLIFEBLK	B
E4	LED	EXIT LIGHT: MAINTAINED 24M VIEWING DISTANCE EXIT LIGHT C/W DIFFUSERS & DIRECTIONAL ARROWS AS SHOWN. CEILING SURFACE MOUNT OR WALL MOUNT BETWEEN 2100mm & 2700mm AFFL IF THERE IS NO VERTICAL SURFACE TO MOUNT THE FITTING ON WITHIN THIS RANGE CONFIRM THE MOUNTING HEIGHT WITH THE ENGINEER. AS2293 CLASSIFICATION C0-D1.25- C90-D2	BLACK	CLEVERTRONICS LUBPRO-SM-BLK	A
EX	LED	EXIT LIGHT: MAINTAINED 24M VIEWING DISTANCE EXIT LIGHT C/W DIFFUSERS & DIRECTIONAL ARROWS AS SHOWN. CEILING SURFACE MOUNT OR WALL MOUNT BETWEEN 2100mm & 2700mm AFFL IF THERE IS NO VERTICAL SURFACE TO MOUNT THE FITTING ON WITHIN THIS RANGE CONFIRM THE MOUNTING HEIGHT WITH THE ENGINEER. AS2293 CLASSIFICATION C0-D1.25- C90-D2	BLACK	CLEVERTRONICS LUBPRO-SM	A
HRE		EXISTING HEATER AND ITS ASSOCIATED CONTROL TO BE RETAINED / ADJUSTED AS NECESSARY TO REFLECT THE NEW LAYOUT			B
CHANNEL x		CONTROL CHANNEL WITH A NUMERICAL REFERENCE. REFER TO THE POWER AND LIGHTING CONTROL SCHEMATIC / SCHEDULE			A
LIGHTING CONTROL SWITCH PANEL (SPx)		6-BUTTON PROGRAMMABLE SWITCH PANEL C/W CENTRAL LCD DISPLAY MOUNTED AT 1000mm AFFL UNLESS NOTED OTHERWISE.	ALUMINIUM	DYNALITE ANTUMBRA DISPLAY	A
SINGLE POWER OUTLET		SINGLE POWER OUTLET C/W CIRCUIT IDENTIFICATION ON THE FACEPLATE BEHIND THE SURROUND MOUNT AT 300mm AFFL U.N.O. RATING 10A U.N.O.	WHITE UNLESS NOTED AS BLACK (BK)	CLIPSAL C2000 SERIES	A
AUTO DOOR SINGLE POWER OUTLET (AD)		SINGLE POWER OUTLET C/W CIRCUIT IDENTIFICATION LOCATED CONCEALED WITHIN THE AUTO DOOR HEAD MULLION RATING 10A U.N.O.	WHITE	CLIPSAL C2000 SERIES	A
SINGLE WEATHERPROOF POWER OUTLET (IP56)		IP56 WEATHERPROOF SINGLE POWER OUTLET. MOUNT AT MINIMUM 1100mm AFFL U.N.O. RATING 10A U.N.O.	-	CLIPSAL "56 SERIES"	A
DOUBLE POWER OUTLET		DOUBLE POWER OUTLET C/W CIRCUIT IDENTIFICATION ON THE FACEPLATE BEHIND THE SURROUND MOUNT AT 300mm AFFL U.N.O. RATING 10A U.N.O.	WHITE UNLESS NOTED AS BLACK (BK)	CLIPSAL C2000 SERIES	A

C3637a-0002(B).xls

Pages inc. any attach. 7 of 8



ELECTRICAL DESIGN GROUP

ELECTRICAL BUILDING SERVICES CONSULTANTS

P.O. Box 15, SHERWOOD Q. 4075

Phone: (07) 3278 4375 Fax: (07) 3716 0222

Web Site: www.edg.net.au Email: brisbane@edg.net.au

C3637a - YAMANTO TAVERN

C3637a-0002(B).xls

ELECTRICAL EQUIPMENT SCHEDULE

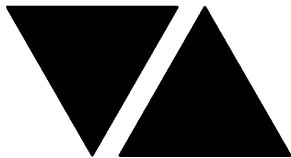
REVISION B - 04 NOVEMBER 2025

THE LIGHT FITTING SUPPLIER CONTACT DETAILS MAY BE AVAILABLE ON THE EDG WEBSITE VIA THE FOLLOWING LINK
www.edg.net.au/Links/Lighting.htm

TYPE	LAMPS	DESCRIPTION	COLOUR / ACCESSORY	CATALOGUE No	REV
GAMING TAB OUTLET		GAMING / TAB OUTLETS PROVIDED BY THE GAMING ELECTRICIAN. REFER TO THE NOTES FOR ADDITIONAL DETAILS ON THE SCOPE.			A
SIGN CONNECTION		COORDINATE THE LOCATION AND CONNECTION WITH THE SIGN CONTRACTOR ENSURING THE CONNECTION ARE PROVIDED WITH APPROPRIATE WEATHER PROTECTION AND ARE CONCEALED FROM VIEW.			A
SINGLE-PHASE ISOLATOR		SINGLE-PHASE WEATHERPROOF ISOLATOR. MOUNT AT 1350mm AFFL U.N.O. RATING 20A U.N.O. CONNECT TO EQUIPMENT VIA FLEXIBLE CONDUIT.	-	CLIPSAL WHT20	A
THREE-PHASE ISOLATOR		THREE-PHASE WEATHERPROOF ISOLATOR. MOUNT AT 1350mm AFFL U.N.O. RATING 20A U.N.O. CONNECT TO EQUIPMENT VIA FLEXIBLE CONDUIT.	-	CLIPSAL WHT35	A
LED SCREEN AV CONNECTION (AV)		PROVIDE EACH AV LED SCREEN POWER SUPPLY CONNECTION AS FOUR OF 413s WITH SUFFICIENT CABLE TO ALLOW THEM TO BE CONNECTED AND PUSHED BACK INTO THE WALL. COORDINATE THE HEIGHT OF THE CONNECTIONS / 413s WITH THE LED SCREEN SUPPLIER.			A
DB-A		PROVIDE A NEW DISTRIBUTION BOARD DB-A AS PER THE DB-A SCHEDULE AND NOTES.			A
DB-1		EXISTING DISTRIBUTION BOARD DB-1 TO REMAIN. ANY EXISTING CIRCUITS THAT BECOME REDUNDANT DUE TO THE WORKS ARE TO BE REMOVED.			A
DB-2		EXISTING DISTRIBUTION BOARD DB-2 TO BE REMOVED AS PER THE NOTES AND POWER SCHEMATIC.			A
DB-3		EXISTING DISTRIBUTION BOARD DB-3 TO REMAIN. ANY EXISTING CIRCUITS THAT BECOME REDUNDANT DUE TO THE WORKS ARE TO BE REMOVED.			A
DB-4		EXISTING DISTRIBUTION BOARD DB-4 TO REMAIN. ANY EXISTING CIRCUITS THAT BECOME REDUNDANT DUE TO THE WORKS ARE TO BE REMOVED.			A
DB-5		EXISTING DISTRIBUTION BOARD DB-5 TO REMAIN. ANY EXISTING CIRCUITS THAT BECOME REDUNDANT DUE TO THE WORKS ARE TO BE REMOVED.			A
MSB		EXISTING HOTEL MAIN SWITCHBOARD TO REMAIN. REFER TO THE NOTES AND POWER SCHEMATICS FOR THE CHANGES TO THE MSB.			A
DB-CJB		GAMING DISTRIBUTION BOARD TO BE PROVIDED BY GAMING ELECTRICIAN			A
M		EXISTING RETAIL METERING TO REMAIN AS IS.			A
VR		EXISTING VOLTAGE REGULATOR TO REMAIN AS IS			A

C3637a-0002(B).xls

Pages inc. any attach. 8 of 8



ELECTRICAL DESIGN GROUP

ELECTRICAL BUILDING SERVICES CONSULTANTS

P.O. Box 15, SHERWOOD Q. 4075

Phone: (07) 3278 4375 Fax: (07) 3716 0222

Web Site: www.edg.net.au Email: brisbane@edg.net.au

C3637a - YAMANTO TAVERN

C3637a-0004(B).xls

LIGHTING CONTROL SCHEDULE

REVISION B - 04 NOVEMBER 2025

MISCELLANEOUS EQUIPMENT					REV
ITEM	DESCRIPTION				A
SP1	AS DETAILED IN THE EQUIPMENT SCHEDULE 6-BUTTON PROGRAMMABLE SWITCH PANEL C/W CENTRAL LCD DISPLAY DYNALITE ANTUMBRA DISPLAY ALUMINIUM				A
SP2	AS DETAILED IN THE EQUIPMENT SCHEDULE 6-BUTTON PROGRAMMABLE SWITCH PANEL C/W CENTRAL LCD DISPLAY DYNALITE ANTUMBRA DISPLAY ALUMINIUM				A
SP3	AS DETAILED IN THE EQUIPMENT SCHEDULE 6-BUTTON PROGRAMMABLE SWITCH PANEL C/W CENTRAL LCD DISPLAY DYNALITE ANTUMBRA DISPLAY ALUMINIUM				A
SP4	AS DETAILED IN THE EQUIPMENT SCHEDULE 6-BUTTON PROGRAMMABLE SWITCH PANEL C/W CENTRAL LCD DISPLAY DYNALITE ANTUMBRA DISPLAY ALUMINIUM				
PE CELL	PROGRAMMABLE PE CELL DUS 90CS CONFIRM THE LOCATION ON SITE WITH THE ARCHITECT				A
TIME CLOCK	PROGRAMMABLE TIME CLOCK ENVISION GATEWAY PDEG LOCATED IN DB-A				A
CONTROL MODULE 1					A
TYPE:		DYNALITE DDRC1220FR-GL			A
DESCRIPTION		12CH 20 A FEEDTHROUGH RELAY CONTROLLER			A
LOCATION		DIN RAIL MOUNTED WITHIN DB-A			A
BUS:		A			A
CHANNEL	CONTROL	DESCRIPTION			A
		LOCATION	CIRCUIT	USE	A
1	SWITCHED	GAMING	4CHANNEL CONTACTOR	SIGNAGE	A
2	SWITCHED	GAMING	2CHANNEL CONTACTOR	G1	A
3	SWITCHED	INTERNAL	DB-A- L1	SIGN	A
4	SWITCHED	EXTERNAL	DB-A- L3	SIGN	A
5	SWITCHED	EXTERNAL	DB-A- L4	SIGN	A
6	SWITCHED	EXTERNAL	DB-A- L5	SIGN	A
7	SWITCHED	EXTERNAL	DB-A- L6	SIGN	A
8					A
9					A
10					A
11					A
12					A



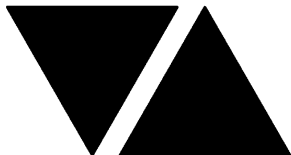
C3637a - YAMANTO TAVERN

C3637a-0004(B).xls

LIGHTING CONTROL SCHEDULE

REVISION B - 04 NOVEMBER 2025

CONTROL MODULE 2					A
TYPE:		DYNALITE DDBC1200			A
DESCRIPTION		12CH BOARD CAST DALI CONTROLLER			A
LOCATION		DIN RAIL MOUNTED WITHIN DB-A			A
BUS:		A			A
CHANNEL	CONTROL	DESCRIPTION			A
		LOCATION	CIRCUITS	USE	A
13	DALI DIM	GAMING	DB-A- L2	S1	A
14	DALI DIM	GAMING	DB-A- L2	S2	A
15	DALI DIM	GAMING	DB-A- L2	S3	A
16	DALI DIM	GAMING	DB-A- L2	RD02	A
17	DALI DIM	GAMING	DB-A- L2	RD03	A
18	DALI DIM	GAMING	DB-A- L2	RD01	A
19	DALI DIM	GAMING	DB-A- L3	S16	A
20	DALI DIM	GAMING	DB-A- L3	S17	A
21	DALI DIM	AMENITY	DB-A- L4	RDO1	A
22	DALI DIM	CIRCULATION	DB-A- L4	RD01	A
23	DALI DIM	CIRCULATION	DB-A- L4	S11	A
24	DALI DIM	GAMING	DB-A- L2	S8	B
CONTROL MODULE 3					A
TYPE:		DYNALITE DDMC802			A
DESCRIPTION		8CH MODULAR CONTROLLER			A
LOCATION		DIN RAIL MOUNTED WITHIN DB-A			A
BUS:		A			A
CHANNEL	CONTROL	DESCRIPTION			A
		LOCATION	CIRCUIT	USE	A
25	DGTM202	GAMING	DB-A -L5	PD03	A
26		SPORTS BAR		PD04	B
27	DGTM202	SPORTS BAR		WL02	A
28		FUNCTION		WL02	A
29	DGTM202	AMENITY		RD04	A
30		ENTRY		RD04	A
31	DGTM202	BOH		RD04	A
32		SPORTS BAR		PD05	A



ELECTRICAL DESIGN GROUP

ELECTRICAL BUILDING SERVICES CONSULTANTS

P.O. Box 15, SHERWOOD Q. 4075

Phone: (07) 3278 4375 Fax: (07) 3716 0222

Web Site: www.edg.net.au Email: brisbane@edg.net.au

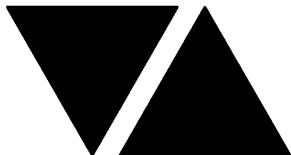
C3637a - YAMANTO TAVERN

C3637a-0004(B).xls

LIGHTING CONTROL SCHEDULE

REVISION B - 04 NOVEMBER 2025

CONTROL MODULE 4					A
TYPE:		DYNALITE DDBC1200			A
DESCRIPTION		12CH BOARD CAST DALI CONTROLLER			A
LOCATION		DIN RAIL MOUNTED WITHIN DB-A			A
BUS:		A			A
CHANNEL	CONTROL	DESCRIPTION			A
		LOCATION	CIRCUITS	USE	A
33	DALI DIM	FUNCTION	DB-A- L6	RD01	A
34	DALI DIM	FUNCTION	DB-A- L6	S6	A
35	DALI DIM	SPORTS BAR	DB-A- L6	S8	A
36	DALI DIM	SPORTS BAR	DB-A- L6	S5	B
37	DALI DIM	SPORTS BAR	DB-A- L6	S7	B
38	DALI DIM	SPORTS BAR	DB-A- L6	S8	B
39	DALI DIM	SPORTS BAR	DB-A- L6	S1	B
40	DALI DIM	SPORTS BAR	DB-A- L6	S4	B
41	DALI DIM	SPORTS BAR	DB-A- L6	S15	B
42	DALI DIM	SPORTS BAR	DB-A- L7	TL01	B
43	DALI DIM	SPORTS BAR	DB-A- L7	SL02	B
44	DALI DIM	SPORTS BAR	DB-A- L7	SL01	B
CONTROL MODULE 5 SL01					A
TYPE:		DYNALITE DDBC1200			A
DESCRIPTION		12CH BOARD CAST DALI CONTROLLER			A
LOCATION		DIN RAIL MOUNTED WITHIN DB-A			A
BUS:		A			A
CHANNEL	CONTROL	DESCRIPTION			A
		LOCATION	CIRCUITS	USE	A
45	DALI DIM	AMENITY	DB-A- L7	S9	A
46	DALI DIM	FUNCTION	DB-A- L7	S8	A
47	DALI DIM	FUNCTION	DB-A- L7	S3	A
48	DALI DIM	EXTERNAL	DB-A- L8	S20	B
49	DALI DIM	EXTERNAL	DB-A- L8	WL03	B
50	DALI DIM	EXTERNAL	DB-A- L8	S19	B
51					A
52					A
53					A
54					A
55					A
56					A



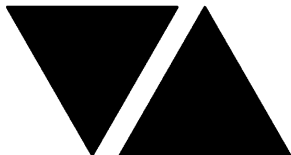
C3637a - YAMANTO TAVERN

C3637a-0004(B).xls

LIGHTING CONTROL SCHEDULE

REVISION B - 04 NOVEMBER 2025

CONTROL MODULE 6					A
TYPE:		DYNALITE DDRC1220FR-GL			A
DESCRIPTION		12CH 20 A FEEDTHROUGH RELAY CONTROLLER			A
LOCATION		DIN RAIL MOUNTED WITHIN DB-A			A
BUS:		A			A
CHANNEL	CONTROL	DESCRIPTION			A
		LOCATION	CIRCUIT	USE	A
57	SWITCHED	INTERNAL	DB-A- L9	SIGN	A
58	SWITCHED	EXTERNAL	DB-A- L9	SIGN	A
59	SWITCHED	INTERNAL	DB-A- L9	SIGN	A
60	SWITCHED	INTERNAL	DB-A- L9	SIGN	A
61					A
62					A
63					A
64					A
65					A
66					A
67					A
68					A
CONTROL MODULE 7					A
TYPE:		DYNALITE DDBC1200			A
DESCRIPTION		12CH BOARD CAST DALI CONTROLLER			A
LOCATION		DIN RAIL MOUNTED WITHIN DB-A			A
BUS:		A			A
CHANNEL	CONTROL	DESCRIPTION			A
		LOCATION	CIRCUITS	USE	A
69	DALI DIM	EXTERNAL	DB-A- L10	S13	A
70	DALI DIM	EXTERNAL	DB-A- L10	S12	A
71	DALI DIM	EXTERNAL	DB-A- L10	FS01	A
72	DALI DIM	EXTERNAL	DB-A- L11	S14	A
73	DALI DIM	EXTERNAL	DB-A- L11	FS01	A
74	DALI DIM	EXTERNAL	DB-A- L11	S12	A
75	DALI DIM	EXTERNAL	DB-A- L11	S13	A
76	DALI DIM	EXTERNAL	DB-A- L12	GL01	A
77	DALI DIM	EXTERNAL	DB-A- L12	GL02	A
78	DALI DIM	EXTERNAL	DB-A- L12	S18 & S19	B
79					A
80					A



ELECTRICAL DESIGN GROUP

ELECTRICAL BUILDING SERVICES CONSULTANTS

P.O. Box 15, SHERWOOD Q. 4075

Phone: (07) 3278 4375 Fax: (07) 3716 0222

Web Site: www.edg.net.au Email: brisbane@edg.net.au

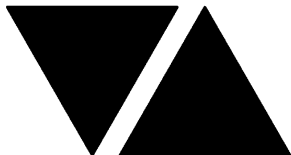
C3637a - YAMANTO TAVERN

C3637a-0004(B).xls

LIGHTING CONTROL SCHEDULE

REVISION B - 04 NOVEMBER 2025

CONTROL MODULE 8					A
TYPE:		DYNALITE DDBC1200			A
DESCRIPTION		12CH BOARD CAST DALI CONTROLLER			A
LOCATION		DIN RAIL MOUNTED WITHIN DB-A			A
BUS:		A			A
CHANNEL	CONTROL	DESCRIPTION			A
		LOCATION	CIRCUITS	USE	A
81	DALI DIM	EXTERNAL	DB-A- L13	FS01	A
82	DALI DIM	EXTERNAL	DB-A- L13	WL03	A
83	DALI DIM	EXTERNAL	DB-A- L13	S22	A
84	DALI DIM	EXTERNAL	DB-A- L13	S13	A
85	DALI DIM	EXTERNAL	DB-A- L14	FS01	A
86	DALI DIM	EXTERNAL	DB-A- L14	S12	A
87	DALI DIM	EXTERNAL	DB-A- L14	S13	A
88	DALI DIM	EXTERNAL	DB-A- L14	S20	A
89					A
90					A
91					A
92					A
CONTROL MODULE 9					A
TYPE:		DYNALITE DDBC1200			A
DESCRIPTION		12CH BOARD CAST DALI CONTROLLER			A
LOCATION		DIN RAIL MOUNTED WITHIN DB-A			A
BUS:		A			A
CHANNEL	CONTROL	DESCRIPTION			A
		LOCATION	CIRCUITS	USE	A
93	DALI DIM	BISTRO	DB-A- L15	S8	A
94	DALI DIM	AMENITY	DB-A- L15	S10	A
95	DALI DIM	BISTRO	DB-A- L15	S21	A
96	DALI DIM	GAMING	DB-A- L16	RD03	A
97	DALI DIM	BISTRO	DB-A- L17	S3	A
98	DALI DIM	BISTRO	DB-A- L17	S1	A
99	DALI DIM	BISTRO	DB-A- L17	S8	A
100	DALI DIM	AMENITY	DB-A- L17	S9	A
101	DALI DIM	BISTRO	DB-A- L15	RD03	B
102	DALI DIM	AMENITY	DB-A- L17	S23	B
103	DALI DIM	AMENITY	DB-A- L15	S23	B
104					A



ELECTRICAL DESIGN GROUP

ELECTRICAL BUILDING SERVICES CONSULTANTS

P.O. Box 15, SHERWOOD Q. 4075

Phone: (07) 3278 4375 Fax: (07) 3716 0222

Web Site: www.edg.net.au Email: brisbane@edg.net.au

C3637a - YAMANTO TAVERN

C3637a-0004(B).xls

LIGHTING CONTROL SCHEDULE

REVISION B - 04 NOVEMBER 2025

CONTROL MODULE 10					A
TYPE:		DYNALITE DDBC1200			A
DESCRIPTION		12CH BOARD CAST DALI CONTROLLER			A
LOCATION		DIN RAIL MOUNTED WITHIN DB-A			A
BUS:		A			A
CHANNEL	CONTROL	DESCRIPTION			A
		LOCATION	CIRCUITS	USE	A
105	DALI DIM	BISTRO	DB-A- L18	WL01 VIA A DALI TO TE CONVERTER	A
106	DALI DIM	BISTRO	DB-A- L18	WL01 VIA A DALI TO TE CONVERTER	A
107	DALI DIM	BISTRO	DB-A- L18	RD01	B
108	DALI DIM	BISTRO	DB-A- L19	RD03	B
109	DALI DIM	BISTRO	DB-A- L19	RD04 VIA A DALI TO TE CONVERTER	A
110	DALI DIM	BISTRO	DB-A- L19	RD04 VIA A DALI TO TE CONVERTER	A
111	DALI DIM	BISTRO	DB-A- L19	RD04 VIA A DALI TO TE CONVERTER	A
112	DALI DIM	BISTRO	DB-A- L20	RD04 VIA A DALI TO TE CONVERTER	A
113	DALI DIM	BISTRO	DB-A- L20	RD04 VIA A DALI TO TE CONVERTER	A
114	DALI DIM	BISTRO	DB-A- L20	RD04 VIA A DALI TO TE CONVERTER	A
115	DALI DIM	BISTRO	DB-A- L21	RD04 VIA A DALI TO TE CONVERTER	A
116	DALI DIM	BISTRO	DB-A- L21	PD01 VIA A DALI TO TE CONVERTER	A
CONTROL MODULE 11					A
TYPE:		DYNALITE DDBC1200			A
DESCRIPTION		12CH BOARD CAST DALI CONTROLLER			A
LOCATION		DIN RAIL MOUNTED WITHIN DB-A			A
BUS:		A			A
CHANNEL	CONTROL	DESCRIPTION			A
		LOCATION	CIRCUITS	USE	A
117	DALI DIM	BISTRO	DB-A- L21	RD04 VIA A DALI TO TE CONVERTER	A
118	DALI DIM	BISTRO	DB-A- L21	PD02 VIA A DALI TO TE CONVERTER	A
119	DALI DIM	BISTRO	DB-A- L21	RD01	B
120	DALI DIM	BISTRO	DB-A- L22	RD04 VIA A DALI TO TE CONVERTER	A
121	DALI DIM	BISTRO	DB-A- L22	RD04 VIA A DALI TO TE CONVERTER	A
122					A
123					A
124					A
125					A
126					A
127					A
128					A



ELECTRICAL DESIGN GROUP

ELECTRICAL BUILDING SERVICES CONSULTANTS

P.O. Box 15, SHERWOOD Q. 4075

Phone: (07) 3278 4375

Website: www.edg.net.au Email: brisbane@edg.net.au

C3637a - YAMANTO TAVERN

C3637a-0005(B).xls

DISTRIBUTION BOARD DB-A

REVISION B - 05 NOVEMBER 2025

							REV
FAULT CURRENT:		6KA		MAIN SWITCH:		250 NON AUTO LOAD BREAK	A
CHASSIS SIZE:		84 POLE		SOURCE:		MSB	A
CHASSIS RATING:		250A		SUPPLY CABLE:		1C 95	A
PHASES:		3					A
REFER TO THE EQUIPMENT SCHEDULE AND NOTES FOR ADDITIONAL REQUIREMENTS. PROVIDE THE DB WITH A FULL WIDTH EMPTY DIN RAIL TO ACCOMMODATE FUTURE CONTACTORS AND CONTROLS IN ADDITION TO THE CONTROLS INCLUDING THE DYNALITE EQUIPMENT PROVIDED AS PART OF THE INITIAL WORKS. PROVIDE THE DB WITH AN AS2293 EMERGENCY LIGHTING CONTROL SYSTEM TO CONTROL THE ASSOCIATED EMERGENCY LIGHTS. PROVIDE THE DB WITH SURGE PROTECTION. ENSURE THE SCHEDULE INCLUDES THE CIRCUIT USE AND LOCATION.							A
CIRC	PH	CIRCUIT BREAKER (amps)	CONTROL EQUIPMENT	CABLE SIZE (mm ²)	LOCATION	CIRCUIT USE	
P1	1	16	RCBO	2.5	RELOCATED FROM DB2	LIGHTS	A
P2	1	16	RCBO	2.5	RELOCATED FROM DB3	LIGHTS	A
P3	3	10	RCBO	2.5	RELOCATED FROM DB4	EXHAUST FAN	A
P4	1	16	RCBO	2.5	RELOCATED FROM DB5	SIGN	A
P5	1	40	RCBO	6.0	RELOCATED FROM DB6	IMPACT	A
P6	1	32	RCBO	6.0	RELOCATED FROM DB7	CONFIRM ON SITE	A
P7	1	20	RCBO	2.5	RELOCATED FROM DB8	CONFIRM ON SITE	A
P8	1	20	RCBO	2.5	RELOCATED FROM DB9	CONFIRM ON SITE	A
P9	3	32	RCBO	2.5	RELOCATED FROM DB10	COMBI	A
P10	1	20	RCBO	2.5	RELOCATED FROM DB11	KIT GPO	A
P11	1	20	RCBO	2.5	RELOCATED FROM DB12	OFFICE AC	A
P12	3	63		10.0	RELOCATED FROM DB13	AC 3	A
P13	1	20	RCBO	2.5	GAMING	TV	A
P14	1	20	RCBO	2.5	GAMING	CLEANING	A
P15	1	20	RCBO	2.5	GAMING	KENO	A
P16	1	20	RCBO	2.5	REAR CORRIDOR	ATM	A
P17	1	20	RCBO	2.5	SPORTS BAR	LED SCREEN	A
P18	1	20	RCBO	2.5	SPORTS BAR	LED SCREEN	A
P19	1	20	RCBO	2.5	FUNCTION ROOM	TV	A
P20	1	20	RCBO	2.5	BISTRO	TV	A
P21	1	20	RCBO	2.5	EXTERNAL	TV	A
P22	1	25	RCBO	6.0	BAR	COFFEE	A
P23	1	20	RCBO	2.5	BAR	GPO	A
P24	1	20	RCBO	2.5	BAR	GPO	A
P25	1	20	RCBO	2.5	BAR	GPO	B
P26	1	20	RCBO	2.5	GAMING	AUTO DOOR	B
P27	1	20	RCBO	2.5	BISTRO	ELECTRIC FIRE	B

C3637a-0005(B).xls

Pages inc. any attach. 1 of 2



ELECTRICAL DESIGN GROUP

ELECTRICAL BUILDING SERVICES CONSULTANTS

P.O. Box 15, SHERWOOD Q. 4075

Phone: (07) 3278 4375

Website: www.edg.net.au Email: brisbane@edg.net.au

C3637a - YAMANTO TAVERN

C3637a-0005(B).xls

DISTRIBUTION BOARD DB-A

REVISION B - 05 NOVEMBER 2025

FAULT CURRENT: 6KA							MAIN SWITCH: 250 NON AUTO LOAD BREAK		REV
CHASSIS SIZE: 84 POLE							SOURCE: MSB		A
CHASSIS RATING: 250A							SUPPLY CABLE: 1C 95		A
PHASES: 3									A
REFER TO THE EQUIPMENT SCHEDULE AND NOTES FOR ADDITIONAL REQUIREMENTS. PROVIDE THE DB WITH A FULL WIDTH EMPTY DIN RAIL TO ACCOMMODATE FUTURE CONTACTORS AND CONTROLS IN ADDITION TO THE CONTROLS INCLUDING THE DYNALITE EQUIPMENT PROVIDED AS PART OF THE INITIAL WORKS. PROVIDE THE DB WITH AN AS2293 EMERGENCY LIGHTING CONTROL SYSTEM TO CONTROL THE ASSOCIATED EMERGENCY LIGHTS. PROVIDE THE DB WITH SURGE PROTECTION. ENSURE THE SCHEDULE INCLUDES THE CIRCUIT USE AND LOCATION.									A
CIRC	PH	CIRCUIT BREAKER (amps)	CONTROL EQUIPMENT	CABLE SIZE (mm ²)	LOCATION	CIRCUIT USE			
L1	1	20	RCBO	2.5		SIGN	B		
L2	1	20	RCBO	2.5		LIGHTING	A		
L3	1	20	RCBO	2.5		LIGHTING	A		
L4	1	20	RCBO	2.5		LIGHTING	A		
L5	1	20	RCBO	2.5		LIGHTING	A		
L6	1	20	RCBO	2.5		LIGHTING	A		
L7	1	20	RCBO	2.5		LIGHTING	A		
L8	1	20	RCBO	2.5		LIGHTING	A		
L9	1	20	RCBO	2.5		LIGHTING	A		
L10	1	20	RCBO	2.5		LIGHTING	A		
L11	1	20	RCBO	2.5		LIGHTING	A		
L12	1	20	RCBO	2.5		LIGHTING	A		
L13	1	20	RCBO	2.5		LIGHTING	A		
L14	1	20	RCBO	2.5		LIGHTING	A		
L15	1	20	RCBO	2.5		LIGHTING	A		
L16	1	20	RCBO	2.5		LIGHTING	A		
L17	1	20	RCBO	2.5		LIGHTING	A		
L18	1	20	RCBO	2.5		LIGHTING	A		
L19	1	20	RCBO	2.5		LIGHTING	A		
L20	1	20	RCBO	2.5		LIGHTING	A		
L21	1	20	RCBO	2.5		LIGHTING	A		
L22	1	20	RCBO	2.5		LIGHTING	A		
L23	1	20	RCBO	2.5	BISTRO	FANS	A		

LEGEND

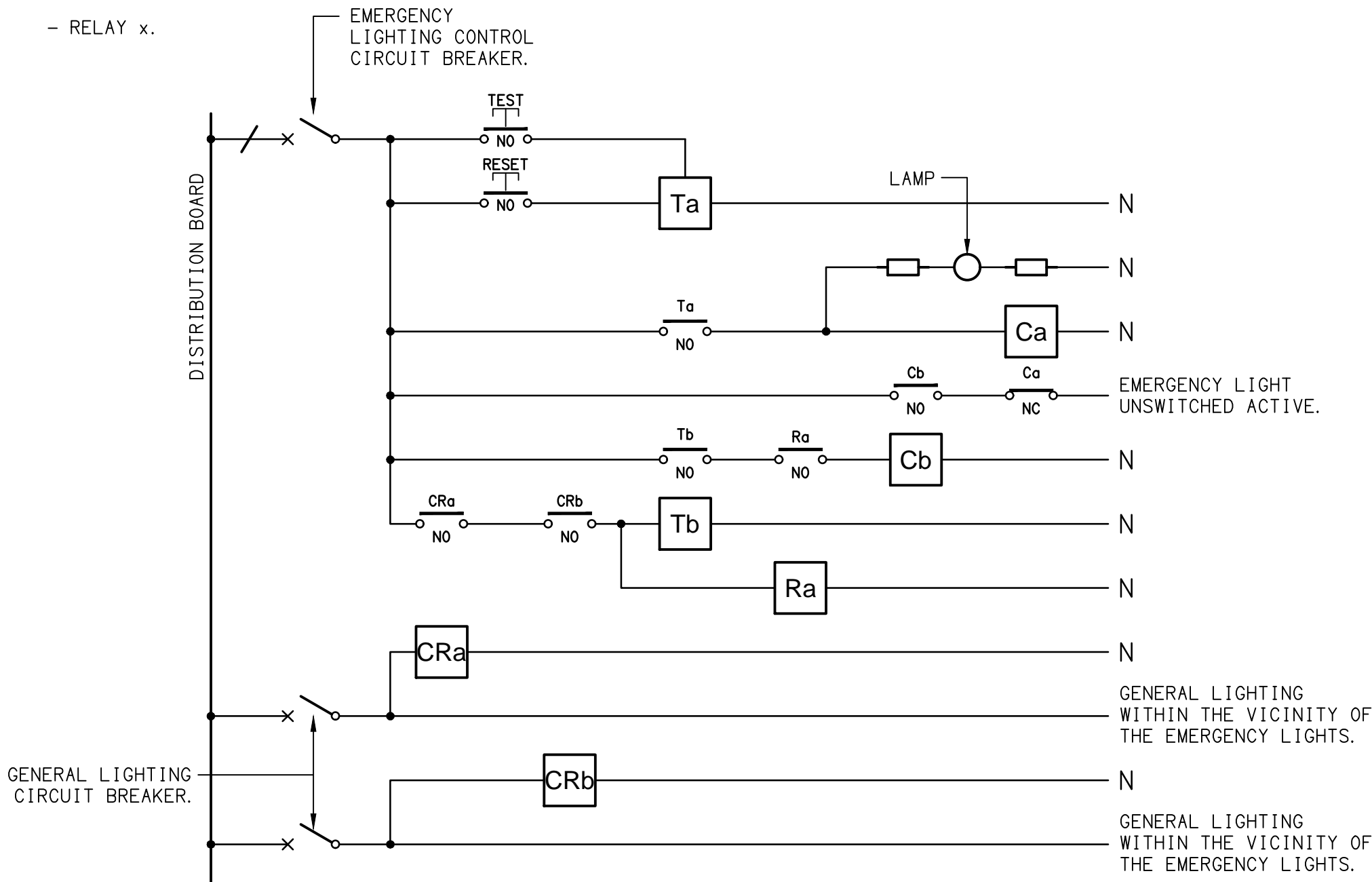
	ELECTRICAL SERVICES SWITCHBOARD.
	SWITCHBOARD / CONTROL PANEL NOT PROVIDED AS PART OF THE ELECTRICAL SUBCONTRACT.
	SINGLE POWER OUTLET.
	DOUBLE POWER OUTLET.
	GAMING / TAB OUTLET BY GAMING ELECTRICIAN.
	SIGNAGE CONNECTION.
	SINGLE PHASE ISOLATOR.
	THREE PHASE ISOLATOR.
	CONDUIT ROUTE.
	LED SCREEN AV POWER CONNECTION.
	LIGHTING CONTROL SWITCHPANEL, TYPE x.
	CIRCUIT LINE.
	SWITCH LINE.
	POWER CIRCUIT DESIGNATION. DENOTES DB AND CIRCUIT.
	LIGHTING CONTROL CHANNEL REFERENCE.
	ELECTRICAL EQUIPMENT AS NOTED.
	REFER TO DETAIL NOTED FOR THE AREA SHOWN HATCHED. ADDITIONAL OUTLETS & FITTINGS MAY BE SHOWN ON DETAIL.
	Sx: LED JOINERY / CEILING STRIP LIGHT, TYPE AS NOTED.
	E1: GENERAL CEILING RECESSED LED EMERGENCY LIGHT, WHITE.
	E2: EXISTING EMERGENCY LIGHT TO BE RETAINED.
	E3: GENERAL SURFACE MOUNT LED EMERGENCY LIGHT, BLACK.
	E4: EMERGENCY LED EXIT LIGHT, BLACK.
	EX: EMERGENCY LED EXIT LIGHT, BLACK.
	PD01: DECORATIVE SUSPENDED PENDANT.
	PD02: DECORATIVE SUSPENDED PENDANT.
	PD03: DECORATIVE SUSPENDED PENDANT.
	PD04: DECORATIVE SUSPENDED PENDANT.
	PD05: DECORATIVE SUSPENDED PENDANT.
	TL01: SURFACE TRACK LIGHTS, BLACK.
	WL01: DECORATIVE WALL LIGHT, BRASS.
	WL02: DECORATIVE WALL LIGHT, BLACK.
	WL03: DECORATIVE WALL LIGHT.

LEGEND

	RD01: RECESSED DOWNLIGHT, WHITE.
	RD02: RECESSED ADJUSTABLE DOWNLIGHT, BLACK.
	RD03: RECESSED DOWNLIGHT, BLACK.
	RD04: EXISTING LIGHT FITTING TO BE RETAINED.
	GL01: GARDEN SPIKE LIGHT, BLACK.
	GL02: GARDEN LIGHT.
	G1: GAMING MACHINE BASE KICK LED STRIP LIGHT.
	FE: EXISTING CEILING FAN AND CONTROLLER TO BE RETAINED.
	HRE: EXISTING HEATER TO BE RETAINED.
	FS01: FESTOON LIGHTS FIXED TO STAINLESS STEEL WIRE SUPPORT.
	SL01: SURFACE DOWNLIGHT.
	SL02: SURFACE DOWNLIGHT.
	M: EXISTING RETAIL METER.
	VR: EXISTING VOLTAGE REGULATOR.

EQUIPMENT:

- TEST – TEST PUSH BUTTON MOUNTED ON THE DISTRIBUTION BOARD ESCUTCHEON.
- RESET – RESET PUSH BUTTON MOUNTED ON THE DISTRIBUTION BOARD ESCUTCHEON.
- LAMP – AMBER TEST INDICATING LAMP MOUNTED ON THE DISTRIBUTION BOARD ESCUTCHEON.
- Ta – ADJUSTABLE 0-3 HOUR TIMED RELAY.
- Tb – 15 MINUTE RUN-ON TIMER TO OPERATE UPON THE RETURN OF MAINS POWER.
- Cx – CONTACTOR x.
- CRx – CONTROL RELAY x.
- Rx – RELAY x.

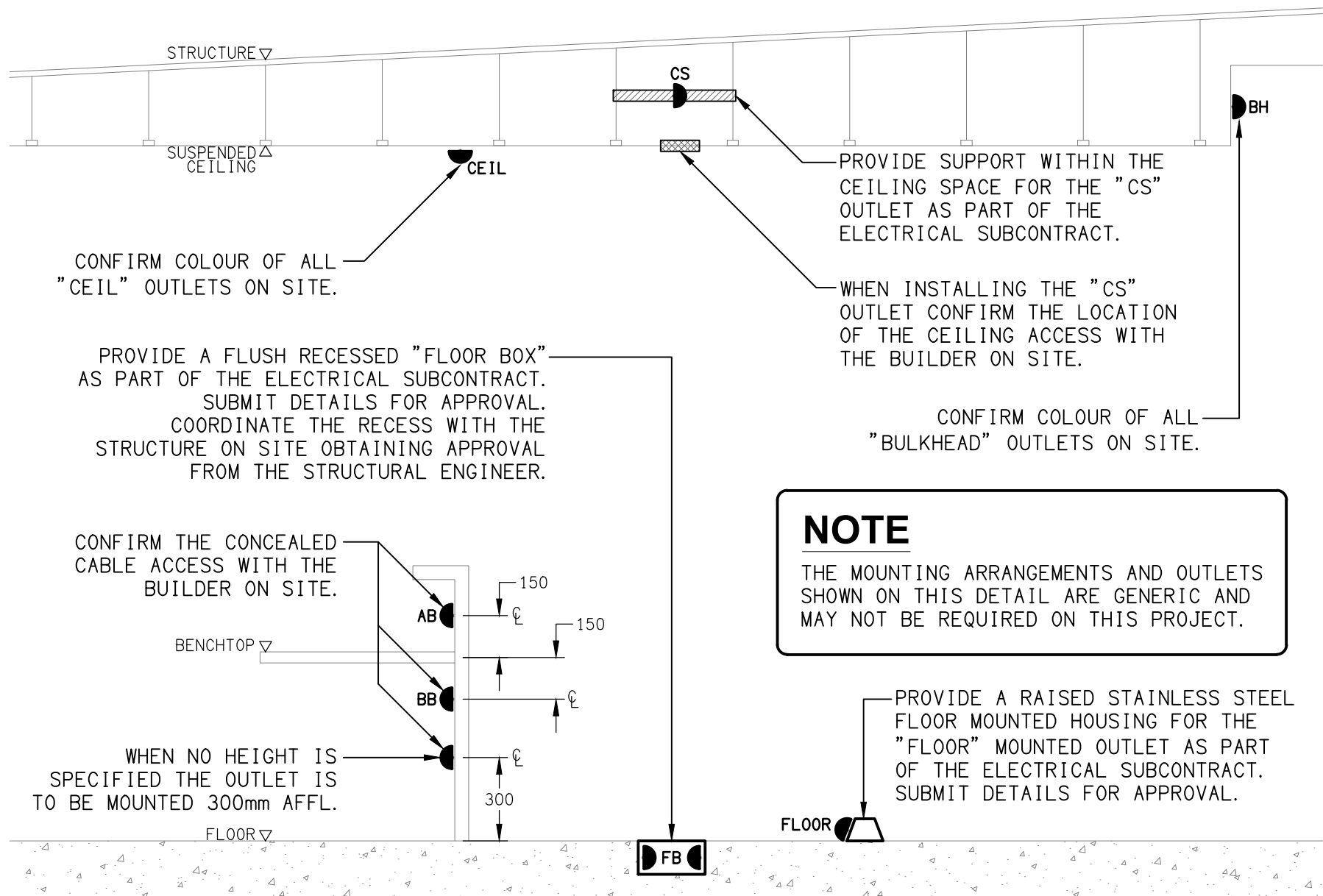


NOTES

1. THE EMERGENCY LIGHT UNSWITCHED ACTIVE / GENERAL LIGHTING SWITCHED ACTIVE CIRCUIT ARRANGEMENT AND CONTROL IS TYPICAL FOR ALL CIRCUITS SUPPLYING EMERGENCY LIGHTS.
2. PROVIDE ADDITIONAL CONTROL RELAYS (CRx) CONFIGURED AS PER CRa AND CRb FOR ALL ADDITIONAL LIGHTING CIRCUITS THAT SUPPLY LIGHTS IN THE VICINITY OF THE EMERGENCY LIGHTS.

SCHEMATIC

EMERGENCY LIGHTING
NOT TO SCALE



DETAIL

TYPICAL OUTLET MOUNTINGS
NOT TO SCALE

ELECTRICAL DESIGN GROUP BRISBANE PTY LTD ACN 092 710 793 TRADING AS: ELECTRICAL DESIGN GROUP	THE COPYRIGHT OF THIS DRAWING REMAINS THE PROPERTY OF THE ELECTRICAL DESIGN GROUP. USE FIGURED DIMENSIONS IN PREFERENCE TO SCALE. ALL DIMENSIONS TO BE VERIFIED ONSITE.	<div><div><div></div></div><div><div>ELECTRICAL DESIGN GROUP</div><div>ELECTRICAL BUILDING SERVICES CONSULTANTS</div><div>BRISBANE GOLD COAST</div></div><div><div>P.O.Box 15, Sherwood Q.4075</div><div>Phone: (07) 3278 4375</div><div>Email: brisbane@edg.net.au</div><div>Web: www.edg.net.au</div></div></div>	PROJECT: YAMANTO TAVERN	DRAWING: ELECTRICAL SERVICES LEGEND & DETAILS		
			502-510 WARWICK ROAD, YAMANTO, QUEENSLAND	SCALE: NOT TO SCALE AT A1		
				PROJECT NO: C3637a	DRAWING NO: E01	REVISION: B

NOTES

1. EXTENT OF WORKS

THE ELECTRICAL SERVICES SUB-CONTRACT INCLUDES BUT IS NOT LIMITED TO THE FOLLOWING:

- SUPPLY AND INSTALLATION OF ALL COMPONENTS FORMING PART OF THE ELECTRICAL SERVICES.
- INSPECTIONS.
- TESTING AND COMMISSIONING.
- MAINTENANCE.
- CABLING, CABLE SUPPORT SYSTEMS AND ACCESS.
- POWER DISTRIBUTION.
- LIGHTING.
- MODIFICATION, RELOCATION AND EXTENSION AS NECESSARY OF ALL EXISTING SERVICES THAT ARE IMPACTED BY THE WORKS OR REQUIRED TO BE EXTENDED BY THE WORKS.
- REMOVAL OF ALL EXISTING SERVICES MADE REDUNDANT BY THE WORKS.
- DOCUMENTS.
- ANY TEMPORARY WORKS REQUIRED TO KEEP THE HOTEL OPERATING DURING THE CONSTRUCTION PROCESS AND ACCOMMODATE STAGING OF THE WORKS TO REFLECT THE EXECUTION OF THE MAIN CONTRACT WORKS.
- ALL MINOR COMPONENTS AND INCIDENTAL WORKS NOT SPECIFICALLY REFERRED TO, HOWEVER NECESSARY TO COMPLETE THE ELECTRICAL SERVICES INSTALLATION SUCH THAT IT IS HANDED OVER COMPLETE, OPERATIONAL AND FIT FOR THE INTENDED USE.

PRIOR TO COMMENCING WORK CONSULT SITE MANAGEMENT FOR ANY HAZARDOUS MATERIAL AND OR ASBESTOS REGISTERS AS WELL AS UNDERTAKE A THOROUGH INSPECTION OF THE SITE TO IDENTIFY ANY POTENTIAL HAZARDOUS MATERIALS, ASBESTOS AND HEALTH OR SAFETY RISKS. ADVISE THE CONTRACTOR OF ANY POTENTIAL HAZARDOUS MATERIALS, ASBESTOS AND HEALTH OR SAFETY RISKS IF IDENTIFIED AND DO NOT COMMENCE WORK UNTIL AN APPROPRIATE MANAGEMENT PLAN HAS BEEN DEVELOPED AND AGREED TO BY ALL PARTIES.

SUPPLY ALL LABOUR, MATERIALS, EQUIPMENT, AND ALL OTHER ITEMS, WHETHER MENTIONED IN DETAIL OR NOT, REQUIRED FOR THE SATISFACTORY COMPLETION OF THE ELECTRICAL SERVICES INSTALLATION, LEAVING IN FULL WORKING ORDER TO THE SATISFACTION OF THE PROJECT MANAGER.

ACCEPT FULL RESPONSIBILITY FOR LIASING, ARRANGING AND CO-ORDINATION OF ALL WORKS THAT HAVE AN EFFECT ON OR WILL BE AFFECTED BY THE ELECTRICAL SERVICES.

REFER TO THE EQUIPMENT SCHEDULE FOR ADDITIONAL REQUIREMENTS.

2. WORKMANSHIP

ENSURE THAT THE ELECTRICAL WORK IS PERFORMED BY THE HOLDER OF A CURRENT ELECTRICAL SUB CONTRACTOR LICENSE AND THE SERVICES COVERED BY THE ACMA IS PERFORMED BY THE HOLDER OF THE APPROPRIATE CURRENT ACMA LICENSE. ENSURE THE INSTALLATION AND ALL COMPONENTS, FIXTURES, FITTINGS, OUTLETS AND CABLES ARE SUPPLIED AND INSTALLED TO A HIGH STANDARD THROUGHOUT, AND INSTALLED IN A NEAT AND TRADESMAN LIKE MANNER, TO THE CURRENT INDUSTRY STANDARDS. ENSURE ALL MATERIALS AND COMPONENTS OF A SIMILAR TYPE ARE OF THE SAME MANUFACTURER AND INSTALLED IN A UNIFORM MANNER.

IT IS THE ELECTRICAL SUB CONTRACTOR'S RESPONSIBILITY TO ENSURE THAT THE INSTALLATION IS FIT FOR PURPOSE AND IS PROVIDED AS A COMPLETE WORKING INSTALLATION. IT IS THE ELECTRICAL SUB CONTRACTOR'S RESPONSIBILITY TO PROVIDE ALL COMPONENTS, FITTINGS, FIXTURES, SYSTEMS, PROGRAMMING ETC IRRESPECTIVE OF THE LEVEL DETAILED IN THE DOCUMENTS SUCH THAT THE INSTALLATION IS PROVIDED AS A COMPLETE WORKING INSTALLATION.

CONCEAL ALL WIRING AND CONDUITS. EXPOSED CABLING OR CONDUITS ARE GENERALLY NOT ACCEPTABLE. IT IS NOTED THAT CHASING AND REINSTATEMENT WILL BE REQUIRED. ENSURE ALL COMPONENTS, EQUIPMENT AND MATERIALS SUPPLIED ARE NEW, UNUSED, DESIGNED AND SELECTED TO ENSURE SATISFACTORY OPERATION UNDER VARYING ATMOSPHERIC, CLIMATIC, HUMID TROPICAL CONDITIONS WITHOUT DISTORTION AND DETERIORATION IN ANY PART AFFECTING EFFICIENCY AND RELIABILITY OF THE SYSTEMS. DESIGN AND SELECT ALL EQUIPMENT TO PROVIDE THE NECESSARY SAFETY TO HUMAN LIFE AND PROPERTY DURING OPERATION AND MAINTENANCE WITH PARTICULAR ATTENTION GIVEN TO ELECTRICAL SAFETY AND SEGREGATION PRECAUTIONS.

CHECK THE FINISHED PAINTWORK AROUND THE AREA OF EACH INSTALLATION AND TOUCH UP ALL DAMAGED PARTS AND FINISHES AFTER THE INSTALLATION OF THE ELECTRICAL SERVICES.

ALL WORKS ARE TO BE CARRIED OUT IN ACCORDANCE WITH THE BUILDER'S PROGRAM. ENSURE ALL FINAL LOCATIONS OF OUTLETS AND FITTINGS ARE CO-ORDINATED ONSITE WITH THE ARCHITECT AND ALL OTHER SERVICES, TO THE APPROVAL OF THE PROJECT MANAGER. ALLOW TO CO-ORDINATE THE FINAL LOCATION OF ALL EQUIPMENT, FITTINGS, & OUTLETS, SUCH THAT THEY ARE INSTALLED IN ACCORDANCE WITH THE AS3000 RESTRICTED ZONES, AND ARE NOT COVERED INAPPROPRIATELY.

ENSURE THAT ALL METAL SURFACES ARE SUITABLY PROTECTED AGAINST CORROSION, AND THAT ALL PLASTIC MATERIALS ARE UV STABILISED.

PROVIDE ALL MATERIALS AS NEW, AND OF THE HIGHEST CLASS AVAILABLE FOR THEIR RESPECTIVE TYPES. ENSURE ALL ASPECTS OF THE WORK ARE OF A HIGH STANDARD THROUGHOUT, AND INSTALLED IN A NEAT AND TRADESMAN LIKE MANNER, TO THE CURRENT INDUSTRY STANDARDS.

MODIFICATION, RELOCATION AND EXTENSION AS NECESSARY OF ALL EXISTING SERVICES THAT ARE IMPACTED BY THE WORKS OR REQUIRED TO BE EXTENDED BY THE WORKS.

PROVIDE ALL TEMPORARY WORKS REQUIRED TO KEEP THE VENUE AND ALL CONSTRUCTION STAGES OPERATING INCLUDING STAGED COMMISSIONING DURING THE CONSTRUCTION PROCESS.

ALL MINOR COMPONENTS AND INCIDENTAL WORKS NOT SPECIFICALLY REFERRED TO, HOWEVER NECESSARY TO COMPLETE THE ELECTRICAL SERVICES INSTALLATION SUCH THAT IT IS HANDED OVER COMPLETE, OPERATIONAL AND FIT FOR THE INTENDED USE.

CORRUGATED CONDUITS MUST NOT BE USED WITHIN ANY FOOD OR DRINK PREPARATION OR SERVERY AREAS.

CABLE JOINS ARE NOT ACCEPTABLE. ALL CABLING, WIRING, CONDUCTORS AND CONDUITS MUST BE CONCEALED. ALL EXISTING ELECTRICAL SERVICES INCLUDING CABLING AND SWITCHGEAR THAT IS FOUND TO BE REDUNDANT OR MADE REDUNDANT BY THE WORKS MUST BE REMOVED.

IT IS ACCEPTABLE TO USE EXISTING SWITCHGEAR, OUTLETS AND CABLING IF THEY ARE APPROPRIATELY RATED AND THE ELECTRICIAN ACCEPTS RESPONSIBILITY OVER THE SWITCHGEAR / OUTLETS / CABLE AND PROVIDES A WARRANTY OVER IT AS IF IT WAS INSTALLED NEW BY THE ELECTRICIAN.

3. STANDARDS

IRRESPECTIVE OF INFORMATION CONTAINED IN THE ELECTRICAL SERVICES DOCUMENTS OR IN INSTRUCTIONS, IT IS THE ELECTRICAL SUB CONTRACTORS RESPONSIBILITY TO ENSURE ALL ELECTRICAL SERVICES WORKS ARE INSTALLED IN ACCORDANCE WITH THE REQUIREMENTS OF THE FOLLOWING. REFER ANY DISCREPANCIES BETWEEN THE REQUIREMENTS OF THE FOLLOWING AND/OR THE ELECTRICAL SERVICES DOCUMENTS AND INSTRUCTIONS TO THE ARCHITECT FOR CLARIFICATION PRIOR TO THE PLACING OF ORDERS, FABRICATION OR INSTALLATION OF THE ITEMS/METHODS IN DISCREPANCY.

- NCC BUILDING CODE OF AUSTRALIA.
- ELECTRICITY ACT.
- ELECTRICAL SAFETY ACT.
- AS/NZS3000.
- AS3008.
- WORKPLACE HEALTH AND SAFETY ACT.
- TELECOMMUNICATIONS ACT.
- ACMA REQUIREMENTS.

NOTES

4. AUTHORITIES

ENSURE ALL OF THE ELECTRICAL SERVICES COMPLY WITH THE REQUIREMENTS OF ALL REGULATORY AUTHORITIES HAVING JURISDICTION OVER THE SITE INCLUDING BUT NOT LIMITED TO THE FOLLOWING:

- ACMA.
- LOCAL COUNCIL.
- LOCAL SUPPLY AUTHORITY.
- STATE GOVERNMENT DEPARTMENT OF ENVIRONMENT AND HERITAGE.
- QLD GOVERNMENT, DIVISION OF WORKPLACE, HEALTH AND SAFETY.
- QLD FIRE AND EMERGENCY SERVICES.

5. DOCUMENTATION

WITHIN TWO WEEKS OF PRACTICAL COMPLETION PROVIDE THE FOLLOWING DOCUMENTATION.

AS CONSTRUCTED DRAWINGS INCLUDING:

- ELECTRICIANS NAME AND CONTACT DETAILS.
- PROJECT NAME, ADDRESS AND DATE OF PRACTICAL COMPLETION.
- FITTING POSITIONS AND TYPES CROSS REFERENCED TO A FITTING / EQUIPMENT SCHEDULE.
- OUTLET, SWITCH, AND CONNECTION POSITIONS CROSS REFERENCED TO A FITTING / EQUIPMENT SCHEDULE.
- REMOTE DRIVER LOCATIONS.
- CIRCUITS CROSS REFERENCED TO A DISTRIBUTION BOARD SCHEDULE.
- LIGHTING CONTROL CHANNELS CROSS REFERENCED TO A LIGHTING CONTROL SCHEDULE.
- POWER SCHEMATIC.
- SWITCHBOARD SHOP DRAWINGS.
- CABLE ACCESS ROUTES.

A FITTING / EQUIPMENT SCHEDULE INCLUDING.

- FITTING DETAILS INCLUDING THE MANUFACTURERS CATALOGUE NUMBERS WITH THE TYPES CROSS REFERENCED TO THE AS CONSTRUCTED DRAWINGS.
- OUTLETS AND SWITCHES INCLUDING THE MANUFACTURERS CATALOGUE NUMBERS WITH THE TYPES CROSS REFERENCED TO THE AS CONSTRUCTED DRAWINGS.

DISTRIBUTION BOARD SCHEDULES CROSS REFERENCED TO THE AS CONSTRUCTED DRAWINGS.

LIGHTING CONTROL SCHEDULE CROSS REFERENCED TO THE AS CONSTRUCTED DRAWINGS.

PHOTOS OF EACH SWITCHBOARD INCLUDING:

- CLOSED POSITION SUCH THAT THE SWITCHBOARD DESIGNATION AND CLEARANCE IS VISIBLE.
- THE SUBMAIN LABEL.
- DOOR/S OPEN ESCUTCHEON/S CLOSED SUCH THAT THE SPARE CAPACITY AND LABELLING IS VISIBLE.
- DOOR/S OPEN ESCUTCHEON/S REMOVED SUCH THAT THE SWITCHGEAR AND INTERNAL CABLING IS VISIBLE.

6. CABLES

UNLESS OTHERWISE SPECIFIED, INSTALL AND TERMINATE CABLES IN ACCORDANCE WITH THE MANUFACTURERS' RECOMMENDATIONS. DETERMINE THE FINAL ROUTES TO SUIT THE BUILDING STRUCTURE AND SITE CONDITIONS. UNLESS NOTED OTHERWISE, PROVIDE ALL 240 VOLT POWER AND LIGHTING WIRING AS 2.5mm² TWIN & EARTH STRANDED COPPER CONDUCTORS, PVC INSULATED 0.6/1kV V75 GRADE TO AS3174, PROTECTED BY A 20 AMP CIRCUIT BREAKER. ALL CONDUIT AND FITTINGS TO BE RIGID UPVC TO AS2053, UNLESS NOTED OTHERWISE.

7. POWER DISTRIBUTION

REMOVE THE EXISTING DB-2 DISTRIBUTION BOARD SECTION OF THE MSB AND THE TWO SETS OF EXISTING FUSES. PROVIDE A NEW CUBICAL ADJACENT EH MSB CONTAINING A NEW 400 AMP MCCB CONNECTED TO THE LOAD SIDE OF THE CTS IN PLACE OF THE EXISTING FUSES VIA 400 AMP FLEX. RECONNECT DB-1 TO A NEW 250 AMP MCCB VIA 250 AMP FLEX. RECONNECT THE EXISTING AC-1 AND AC-2 SUBMAINS TO THE NEW MCCBS. THE EXISTING METERING, CONSUMERS MAINS, MAIN SWITCH AND VOLTAGE REGULATOR SERVICES ARE TO REMAIN AS IS. THE NEW MSB CUBICAL IS TO MATCH THE EXISTING MSB IN STYLE, COLOUR, DEPTH, HEIGHT AND FINISH. PROVIDE A NEW DISTRIBUTION BOARD DB-A WITH A NEW SUBMAIN SUPPLIED FROM A NEW 250 AMP MCCB IN THE NEW MSB CUBICAL. ENSURE THE NEW CUBICAL FITS WITHIN THE SPACE CREATED BY THE REMOVAL OF DB-2 AND THE INSTALLATION OF THE NEW WALL. THE EXISTING DB-2 CIRCUITS THAT REMAIN ARE TO BE RESUPPLIED FROM DB-A VIA NEW SWITCHGEAR AND CONTROLS THAT MATCHES THE EXISTING IN CAPACITY AND FUNCTION. ALL OF THE EXISTING SWITCHBOARDS, CIRCUITS, CABLING AND OUTLETS THAT BECOME REDUNDANT ARE TO BE REMOVED. THE EXISTING CIRCUITS THAT REMAIN WITHIN THE AREA OF WORKS ARE TO BE RECONNECTED TO THE SWITCHBOARDS WITH NEW SWITCHGEAR AND CONTROLS. ANY INTERRUPTION TO THE POWER SUPPLY TO ANY SERVICES OUTSIDE OF THE AREA OF WORKS MUST BE RESTRICTED TO OUTSIDE OF THE HOTELS OPERATING HOURS AND MUST BE ADVISED TO THE OPERATOR IN WRITING AT LEAST ONE WEEK PRIOR.

ALL SWITCHBOARDS AND SWITCHGEAR ARE TO BE SCHNEIDER OR NHP AND CONTAIN AT LEAST 25% OR 12 SPARE POLES (WHICHEVER IS THE LARGER) AT PRACTICAL COMPLETION. ALL SWITCHBOARDS ARE TO BE LIGHT GREY. ORANGE SWITCHBOARDS ARE NOT ACCEPTABLE. PROVIDE 92268 KEY LOCKABLE DOORS ON ALL SWITCHBOARDS. ALL SWITCHBOARDS AND CIRCUITS MUST BE UNIQUELY NAMED WITH SWITCHBOARDS PROVIDED WITH A LABEL CONTAINING:

- SOURCE NAME.
- SOURCE OVERLOAD RATING IN AMPS.
- SUBMAIN CABLE TYPE, SIZE, CONFIGURATION AND LENGTH.

ALL REMOVABLE PANELS AND ESCUTCHEONS MUST BE SECURED VIA 1/4 TURN LATCHES THAT REMAIN PART OF THE PANEL / ESCUTCHEON. IT IS NOT ACCEPTABLE TO SECURE REMOVABLE PANELS AND ESCUTCHEONS BY BOLTS, NUTS OR SCREWS.

ALL CIRCUIT BREAKERS AND CIRCUIT SCHEDULES MUST BE LABELLED / CONTAIN THE SUBMAIN / CIRCUIT USE AND LOCATION SUCH THAT THE CONNECTION / OUTLET CAN BE SIMPLY IDENTIFIED.

OUTLETS ARE TO BE PROVIDED WITH A NEAT HAND WRITTEN CIRCUIT DESIGNATION BY INDELIBLE INK ON THE FACEPLATE SUCH THAT IT IS NOT VISIBLE WHEN THE COVER IS CONCEALED.

REFER TO THE DISTRIBUTION BOARD SCHEDULES FOR ADDITIONAL REQUIREMENTS AND CIRCUIT DETAILS.

ENSURE ALL THREE PHASE CIRCUITS ARE PROVIDED WITH CORRECT PHASE ROTATION.

ENSURE ALL OUTLETS AND ISOLATORS ARE POSITIONED SUCH THAT THEY ARE NOT COVERED BY THE EQUIPMENT. THE FINAL POSITION OF ALL OUTLETS AND ISOLATORS ARE TO BE CONFIRMED ON SITE BY THE TENANTS REPRESENTATIVE.

NOTES

8. GAMING

THE GAMING ELECTRICIAN WILL BE ENGAGED DIRECTLY BY ENDEAVOUR GROUP TO UNDERTAKE THE FOLLOWING:

- COMMUNICATIONS CABLING.
- CIRCUITS FROM GAMING DISTRIBUTION BOARD DB-CJB VIA THE LIGHTING CONTROL SYSTEM AS NECESSARY TO:
- GAMING MACHINES.
- GAMING MODEMS.
- GAMING MACHINE SIGNAGE.
- GAMING ROOM CRTS.
- GAMING ROOM CABLE ACCESS EXCLUDING FLOOR CHASES AND REINSTATEMENT OF THE FLOOR CHASES.

THE BUILDING WORKS ELECTRICAL SUB CONTRACT INCLUDES THE DISTRIBUTION BOARD DB-CJB SWITCHGEAR AS DETAILED IN THE DB-G SCHEDULE AND LIGHTING CONTROL CHANNELS AS DETAILED IN THE LIGHTING CONTROL SCHEDULE FOR THE GAMING ELECTRICIAN TO USE.

ALL OTHER REMAINING ELECTRICAL SERVICES WITHIN THE GAMING ROOM ARE TO BE PROVIDED AS PART OF THE BUILDING WORKS ELECTRICAL SUB CONTRACT.

9. LIGHTING

ALL FRONT OF HOUSE LIGHTING IS TO BE 2,700K OR 3,000K AND THE BACK OF HOUSE LIGHTING IS TO BE 4,000K.

UNLESS A FITTING HAS BEEN SPECIFIED IN THE EQUIPMENT SCHEDULE THAT CONTAINS A MAIN VOLTAGE LAMP, ALL LIGHT FITTINGS MUST BE PROVIDED AS SOLID-STATE LED WITH A FIVE-YEAR MANUFACTURERS REPLACEMENT WARRANTY AND A MINIMUM TWO YEAR MANUFACTURERS REPLACEMENT AND LABOUR WARRANTY.

ALL FRONT OF HOUSE LIGHTS THAT DO NOT CONTAIN A MAIN VOLTAGE LAMP ARE TO BE DALI DIMMABLE.

REMOTE DRIVERS ARE TO BE USED IF POSSIBLE AND LOCATED IN A CONCEALED ACCESSIBLE POSITION. IF THE DRIVER CAN NOT BE REACHED FROM THE FITTING ITS POSITION MUST BE NOTED ON THE AS CONSTRUCTED DOCUMENTS.

ALL FRONT OF HOUSE LIGHTS THAT CONTAIN MAIN VOLTAGE LAMPS ARE TO BE PROVIDED WITH THE LOWEST OUTPUT PRACTICAL TO ACHIEVE THE REQUIRED ILLUMINATION / EFFECT AND BE TRAILING EDGE PHASE DIMMABLE.

ALL ILLUMINATED SIGNAGE, GAMING BASE FOOTREST LEDS, CARPARK LIGHTS, AND EXTERNAL SECURITY LIGHTS NOT CONSIDERED FRONT OF HOUSE ARE TO BE SWITCHED.

ALL LIGHTING CIRCUITS MUST BE PROTECTED BY A 20 AMP RCBO WITH THE AVERAGE NUMBER OF FITTINGS / DRIVERS SUPPLIED FROM A SINGLE CIRCUIT NOT EXCEEDING 25 WITH THE MAXIMUM NOT EXCEEDING 30.

PROVIDE A PHILIPS DYNALITE LIGHTING CONTROL SYSTEM TO CONTROL THE LIGHTING CONFIGURED WITH THE FOLLOWING SCENES:

INTERNAL

- CLEANING - MANUAL OPERATION. 100% LIGHTS ON AND SIGNS OFF.
- DAY - AUTOMATIC OPERATION FROM 10.00 AM TO 3.30 PM.
- AFTERNOON - AUTOMATIC OPERATION FROM 3.30 PM TO DUSK.
- EVENING - AUTOMATIC OPERATION FROM DUSK TO 8.30 PM.
- NIGHT - AUTOMATIC OPERATION FROM 8.30 PM TO CLOSING.
- CLOSED - MANUAL OPERATION. 100% ON FOR 15 MINUTES THEN TO A SECURITY MODE.

EXTERNAL

- DAY - AUTOMATICALLY OFF FROM DAWN TO DUSK.
- NIGHT - AUTOMATICALLY ON FROM DUSK UNTIL 15 MINUTES PAST CLOSING.
- CLOSED - MANUAL OPERATION. NIGHT MODE FOR 15 MINUTES THEN TO A SECURITY MODE.

SET THE ILLUMINATION LEVELS IN CONSULTATION WITH THE VENUE MANAGER AND OBTAIN WRITTEN APPROVAL FROM THE VENUE MANAGER OF THEIR ACCEPTANCE OF THE ILLUMINATION SCENE LEVELS FOR EACH STAGED HANDOVER AND SUBMIT A COPY OF THE APPROVAL TO THE ARCHITECT.

PROVIDE PHILIPS DYNALITE PROGRAMMABLE SWITCH PANELS PE SENSORS AND TIME CLOCKS AS NECESSARY. EACH FUNCTIONAL AREA IS TO BE PROVIDED WITH A SWITCHPANEL IN A NON-CUSTOMER ACCESSIBLE POSITION WITH THE ABILITY TO MANUALLY INSTIGATE THE ABOVE SCENES.

DIN RAIL MOUNT THE PHILIPS DYNALITE CONTROL EQUIPMENT WITHIN THE ASSOCIATED SWITCHBOARD.

ALL OF THE LIGHT FITTINGS, LAMPS AND ACCESSORIES ARE TO BE PROVIDED AS PART OF THIS CONTRACT. THE LIGHTING COMPONENT OF THIS CONTRACT INCLUDES, BUT IS NOT LIMITED TO THE FOLLOWING EXTENT OF WORK:

- LIGHTING.
- LIGHT FITTINGS AND ACCESSORIES.
- EMERGENCY AND EXIT LIGHTING.
- EARTHING OF THE LIGHTING INSTALLATION.
- LIGHTING CONTROL.
- PHILIPS DYNALITE LIGHTING CONTROL SYSTEM.
- LIGHTING SUBCIRCUITS.
- TESTING AND COMMISSIONING.
- RECONNECTION OF THE EXISTING LIGHTING THAT REMAINS.
- REMOVAL OF ALL EXISTING REDUNDANT LIGHTING SERVICES INCLUDING THE REDUNDANT LIGHTING CONTROL SYSTEM.

COMMISSION THE LIGHTING CONTROL AT PRACTICAL COMPLETION AND AGAIN THREE TIMES DURING THE DEFECTS AND LIABILITY PERIOD TO THE SATISFACTION OF THE OPERATOR.

NOTES

10. EMERGENCY AND EXIT LIGHTING

PROVIDE A SINGLE POINT EMERGENCY LIGHTING SYSTEM THAT COMPLIES WITH THE LATEST ISSUE OF ALL PARTS AS2293 AND THE RELEVANT PARTS OF THE NCC BCA. INSTALL EMERGENCY LIGHT FITTINGS NOMINATED AS MAINTAINED WITH THE LAMP PERMANENTLY ON SUPPLIED VIA AN UNSWITCHED ACTIVE MAINS SUPPLY WHEN THE MAINS SUPPLY IS AVAILABLE. WHEN THE MAINS SUPPLY IS NOT AVAILABLE, THE LAMP IS TO REMAIN ON SUPPLIED BY THE EMERGENCY PACK. SINGLE LAMP MAINTAINED EMERGENCY LIGHTS ARE NOT SWITCHED WITH THE LOCAL GENERAL AREA LIGHTING. (THE LAMP IS ALWAYS ON.)

INSTALL EMERGENCY LIGHT FITTINGS NOMINATED AS NON-MAINTAINED AS FOLLOWS:

- IF THE FITTING IS NOT BEING SWITCHED, THE LAMP IS TO REMAIN OFF WHEN THE MAINS SUPPLY IS AVAILABLE. WHEN THE MAINS SUPPLY IS NOT AVAILABLE THE LAMP IS TO BE SWITCHED ON SUPPLIED BY THE EMERGENCY PACK. UNSWITCHED SINGLE LAMP NON-MAINTAINED EMERGENCY LIGHTS ARE NOT SWITCHED WITH THE LOCAL GENERAL AREA LIGHTING. (THE LAMP IS ON ONLY WHEN THE MAINS SUPPLY IS NOT AVAILABLE.)
- IF THE FITTING IS BEING SWITCHED, THE LAMP IS TO BE SUPPLIED AND CONTROLLED WITH THE LOCAL GENERAL AREA LIGHTING WHEN THE MAINS SUPPLY IS AVAILABLE. WHEN THE MAINS SUPPLY IS NOT AVAILABLE THE LAMP IS TO BE SWITCHED ON, SUPPLIED BY THE EMERGENCY PACK. (THE LAMP IS ON WHEN TURNED ON WITH THE LOCAL GENERAL LIGHTING OR THE MAIN SUPPLY IS NOT AVAILABLE.)

INSTALL EMERGENCY LIGHTS SUCH THAT THE STATUS INDICATOR L.E.D. IS CLEARLY VISIBLE AND THE TEST BUTTONS ARE READILY ACCESSIBLE. LABEL EACH CIRCUIT BREAKER WHICH CONTROLS THE UNSWITCHED ACTIVE TO EXIT LIGHTS WITH A LABEL FIXED ADJACENT; ENGRAVED PLASTIC LAMINATE, GREEN BACKGROUND WITH WHITE CHARACTERS: -

WARNING
INTERRUPTING SUPPLY WILL DISCHARGE
EMERGENCY LIGHTING BATTERIES


PROVIDE WRITTEN EVIDENCE OF THE INITIAL COMMISSIONING AND TESTING AND TESTING FOR THE DURATION OF THE MAINTENANCE PERIOD IN ACCORDANCE WITH AS 2293.2.

THIS EVIDENCE IS TO BE IN THE FORM OF A LOG BOOK SIMILAR TO THE GENERAL LIGHTING SERVICE PTY LTD "EMERGENCY LIGHTING MAINTENANCE LOG BOOK AND MANUAL" WHICH IS TO BE PROVIDED BY THE ELECTRICAL SUB-CONTRACTOR AND HAVE ALL ENTRIES FULLY COMPLETED AND BE PRESENTED FOR INSPECTION AT PRACTICAL COMPLETION. THE LOG BOOK IS TO BE RETAINED BY THE ELECTRICAL SUB-CONTRACTOR FOR THE DURATION OF THE MAINTENANCE PERIOD, AND THE SIX MONTHLY TEST AND MAINTENANCE RESULTS ENTERED. THE LOG BOOK IS TO BE PRESENTED FOR APPROVAL AT FINAL COMPLETION (EXPIRY OF THE MAINTENANCE PERIOD) AND WILL BE FORWARDED TO THE OPERATOR FOR THEIR USE.

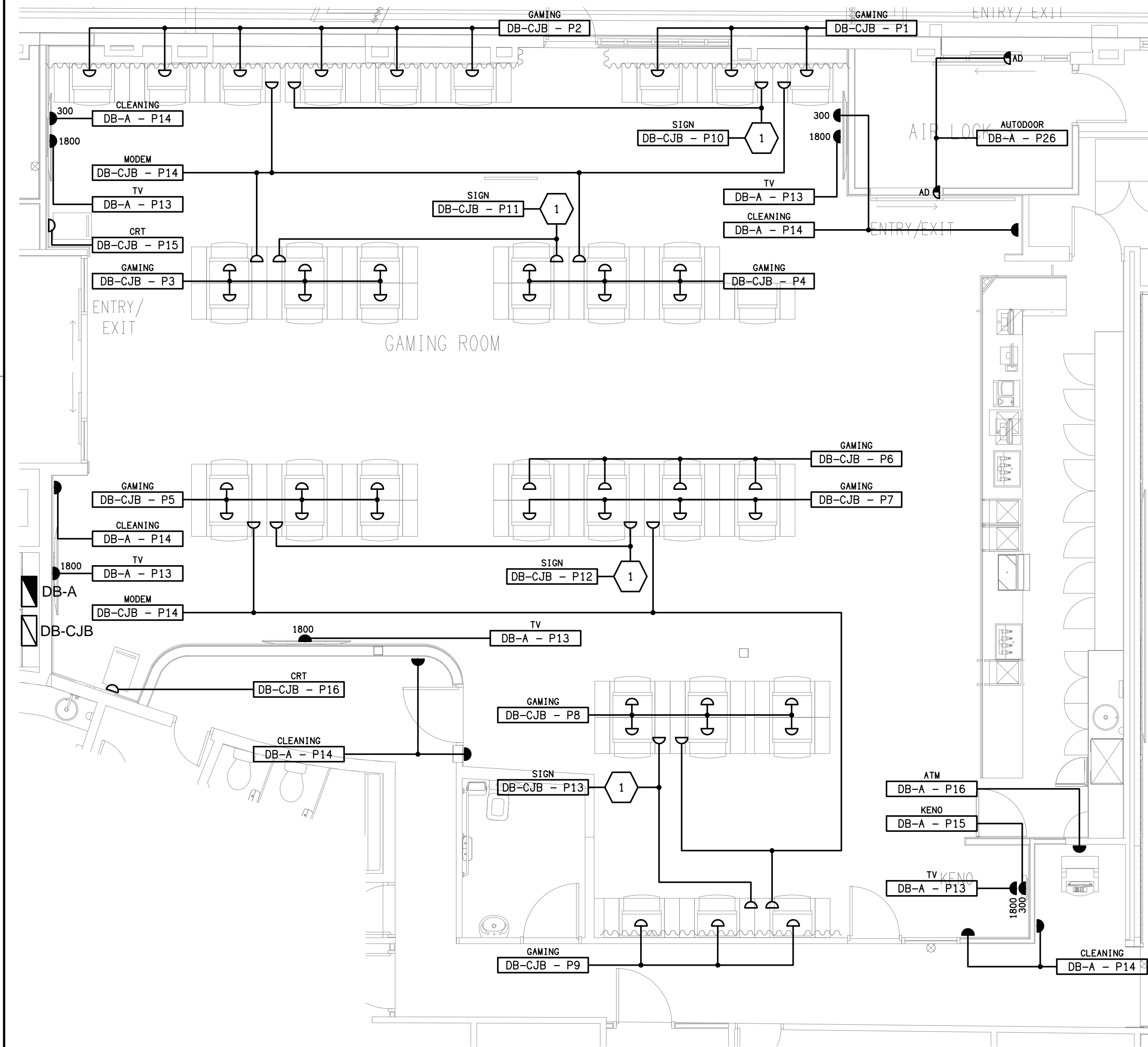
PROVIDE MAINTENANCE OF THE EMERGENCY AND EXIT LIGHTING INSTALLATION INCLUDING RECORDS IN ACCORDANCE WITH THE LATEST ISSUE OF ALL PARTS AS2293 AND THE RELEVANT PARTS OF THE NCC BCA. PROVIDE THE EMERGENCY LIGHTING SYSTEM WITH A SUPPLY SENSING AND TESTING FACILITY IN ACCORDANCE WITH AS 2293.1.

11. ABBREVIATIONS

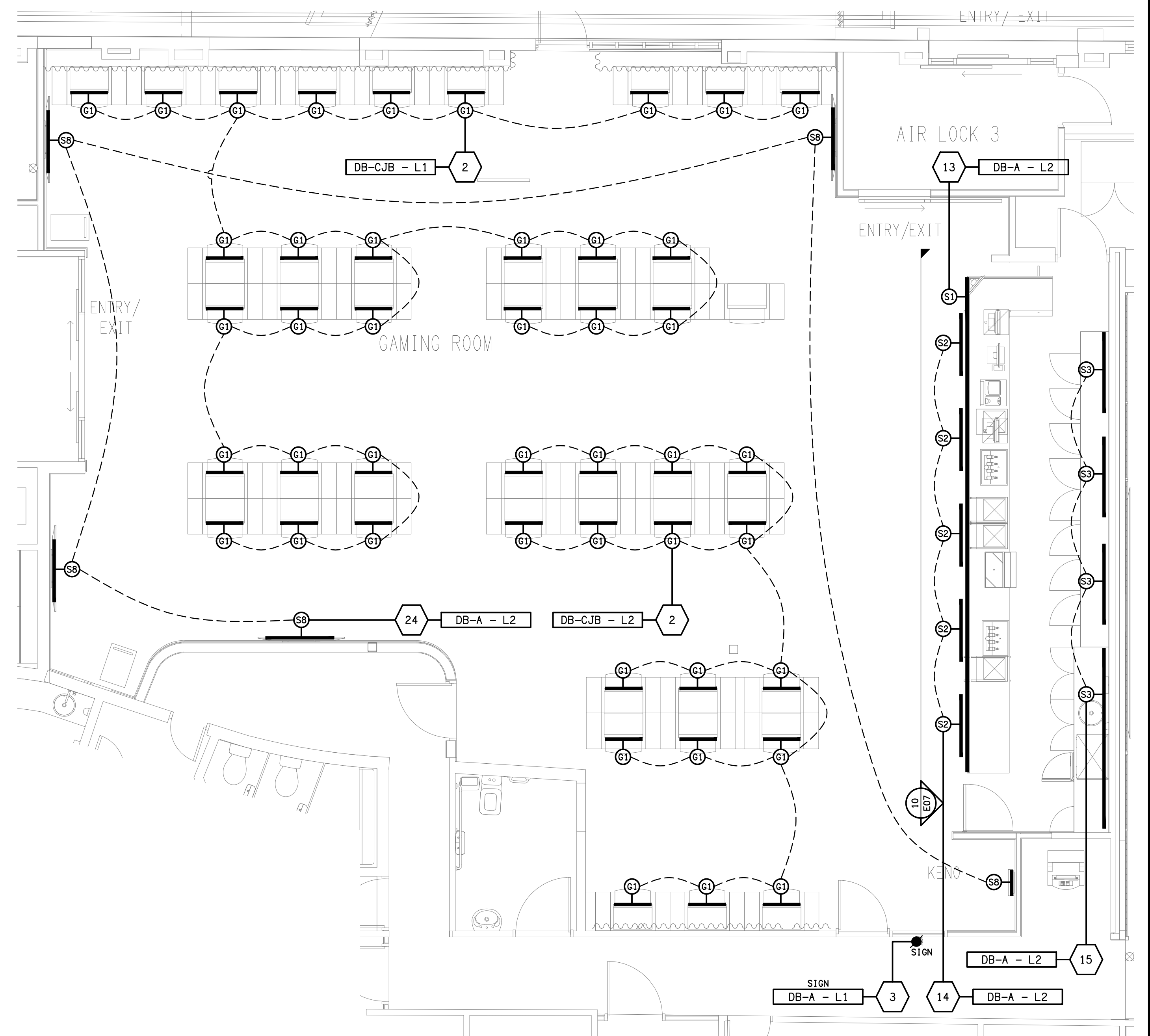
A - AMP CURRENT RATING
AB - MOUNT ABOVE BENCH.
AFFL - ABOVE FINISHED FLOOR LEVEL.
BB - MOUNT BELOW BENCH.
BH - MOUNT ON BULKHEAD.
CEIL - MOUNT ON CEILING.
CS - MOUNT WITHIN CEILING SPACE.
C/W - COMPLETE WITH.
DW - DISHWASHER.
MCB - MINIATURE CIRCUIT BREAKER.
MCCB - MOLDED CASE CIRCUIT BREAKER.
MSB - MAIN SWITCHBOARD.
MSSB - MECHANICAL SERVICES SWITCHBOARD.
MW - MICROWAVE.
N - NEON / LED INDICATOR WHEN ON.
NTS - NOT TO SCALE.
RCBO - CIRCUIT BREAKER C/W AN INTEGRAL 30ma RESIDUAL CURRENT DEVICE.
RCD - CIRCUIT PROTECTED VIA A 30ma RESIDUAL CURRENT DEVICE.
REF - REFRIGERATOR.
UNO - UNLESS NOTED OTHERWISE.
WP - WEATHERPROOF TO IP56 UNO.
500 - NUMBER DENOTES MOUNTING HEIGHT AFFL.

ELECTRICAL DESIGN GROUP BRISBANE PTY LTD ACN 092 710 793		THE COPYRIGHT OF THIS DRAWING REMAINS THE PROPERTY OF THE ELECTRICAL DESIGN GROUP.		USE FIGURED DIMENSIONS IN PREFERENCE TO SCALE.		ALL DIMENSIONS TO BE VERIFIED ONSITE.		 ELECTRICAL DESIGN GROUP ELECTRICAL BUILDING SERVICES CONSULTANTS BRISBANE GOLD COAST		PROJECT: YAMANTO TAVERN		502-510 WARWICK ROAD, YAMANTO, QUEENSLAND		B TENDER 04/11/2025	
TRADING AS: ELECTRICAL DESIGN GROUP														REV: DESCRIPTION: DATE:	
														DRAWING: ELECTRICAL SERVICES NOTES	
														SCALE: NOT TO SCALE AT A1	
														PROJECT NO: C3637a	
														DRAWING NO: E02	
														REVISION: B	



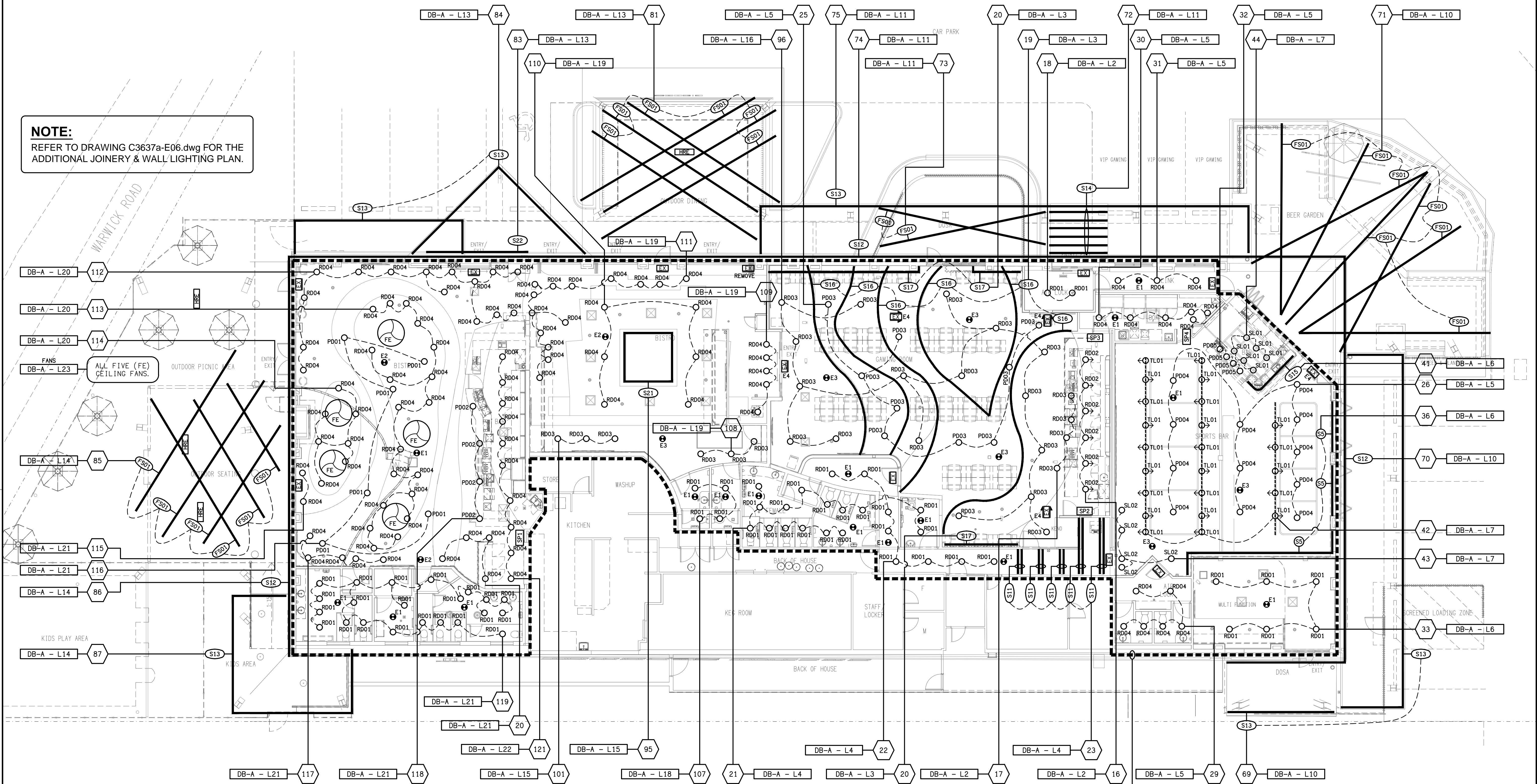


FLOOR PLAN
GAMING ROOM & BAR
SCALE 1:50

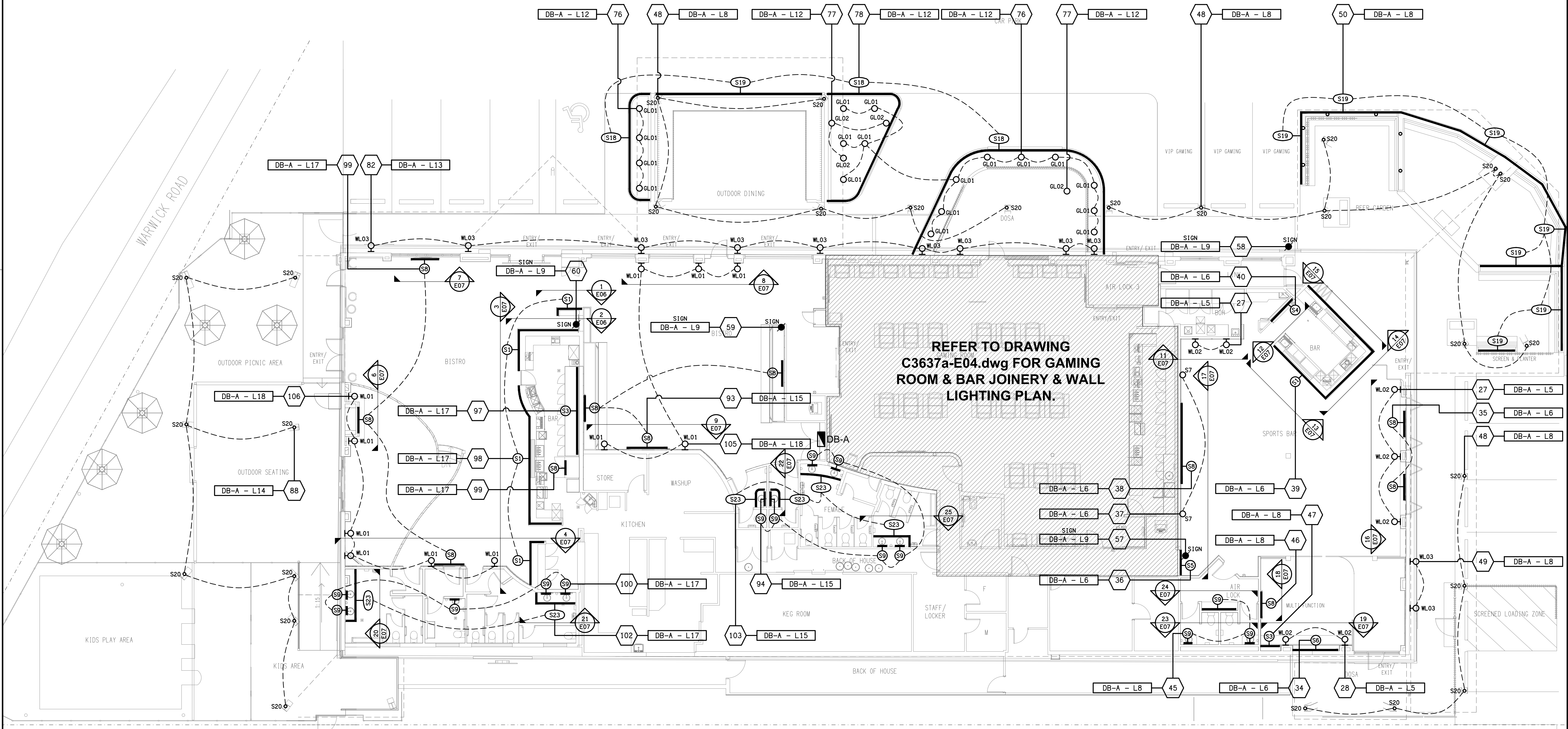


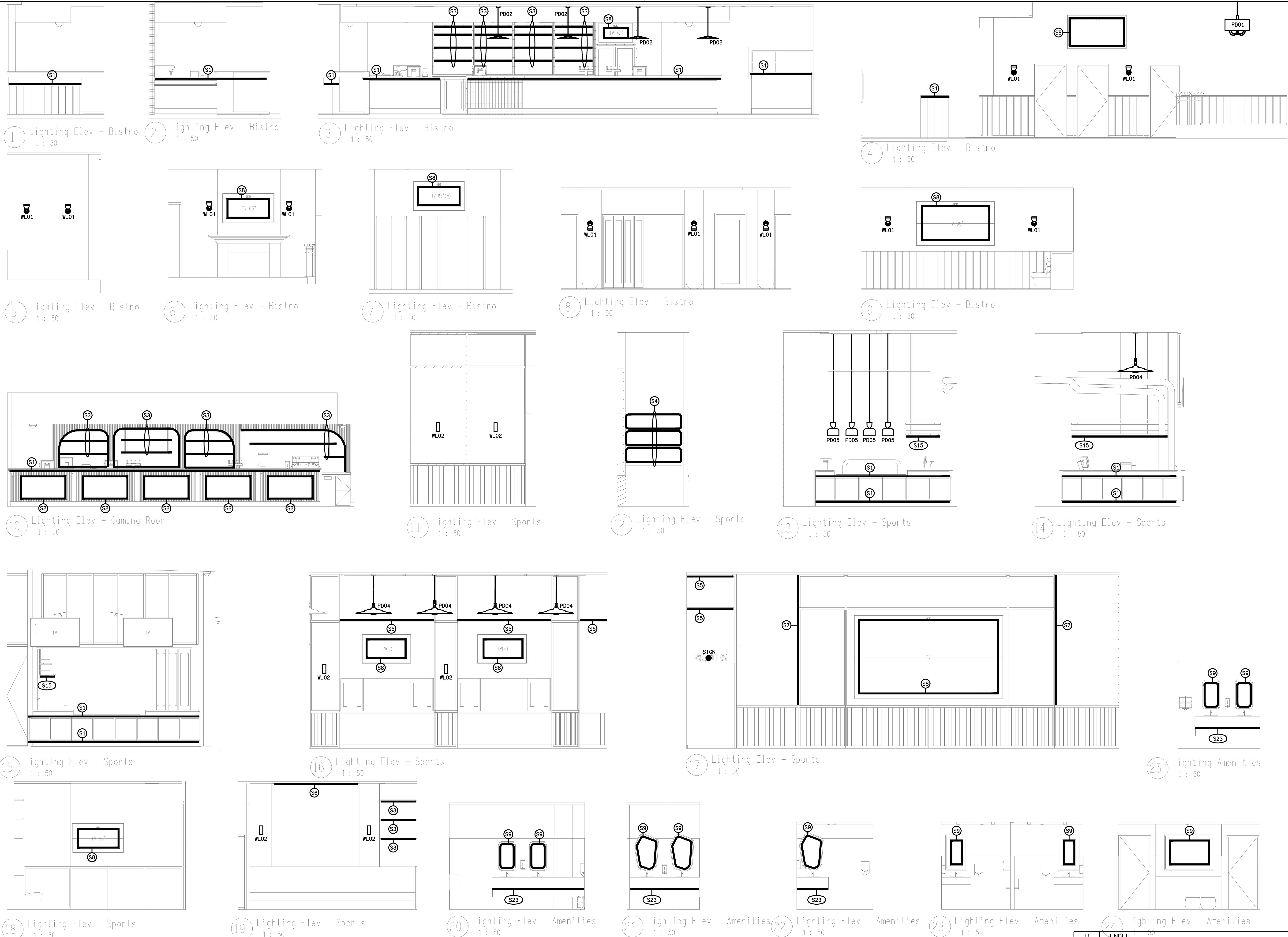
JOINERY LIGHTING PLAN
GAMING ROOM & BAR
SCALE 1:50

NOTE:
REFER TO DRAWING C3637a-E06.dwg FOR THE
ADDITIONAL JOINERY & WALL LIGHTING PLAN.



**ELECTRICAL CEILING SERVICES WITHIN
THIS AREA ARE TO BE REMOVED,
UNLESS NOTED OTHERWISE.**





1 Lighting Elev - Bistro
1 : 50

2 Lighting Elev - Bistro
1 : 50

3 Lighting Elev - Bistro
1 : 50

4 Lighting Elev - Bistro
1 : 50

5 Lighting Elev - Bistro
1 : 50

6 Lighting Elev - Bistro
1 : 50

7 Lighting Elev - Bistro
1 : 50

8 Lighting Elev - Bistro
1 : 50

9 Lighting Elev - Bistro
1 : 50

10 Lighting Elev - Gaming Room
1 : 50

11 Lighting Elev - Sports
1 : 50

12 Lighting Elev - Sports
1 : 50

13 Lighting Elev - Sports
1 : 50

14 Lighting Elev - Sports
1 : 50

15 Lighting Elev - Sports
1 : 50

16 Lighting Elev - Sports
1 : 50

17 Lighting Elev - Sports
1 : 50

25 Lighting Amenities
1 : 50

18 Lighting Elev - Sports
1 : 50

19 Lighting Elev - Sports
1 : 50

20 Lighting Elev - Amenities
1 : 50

21 Lighting Elev - Amenities
1 : 50

22 Lighting Elev - Amenities
1 : 50

23 Lighting Elev - Amenities
1 : 50

24 Lighting Elev - Amenities
1 : 50

ELECTRICAL DESIGN GROUP BRISBANE
PTY LTD
ACN 092 710 793
TRADING AS:
ELECTRICAL DESIGN GROUP

THE COPYRIGHT OF THIS DRAWING
REMAINS THE PROPERTY OF THE
ELECTRICAL DESIGN GROUP.
USE FIGURED DIMENSIONS
IN PREFERENCE TO SCALE.
ALL DIMENSIONS TO BE
VERIFIED ONSITE.

ELECTRICAL DESIGN GROUP
ELECTRICAL BUILDING SERVICES CONSULTANTS
BRISBANE GOLD COAST

P.O.Box 15, Sherwood Q.4075
Phone: (07) 3278 4375
Email: brisbane@edg.net.au
Web: www.edg.net.au

PROJECT:
YAMANTO TAVERN

502-510 WARWICK ROAD, YAMANTO, QUEENSLAND

B	TENDER	04/11/2025
REV.	DESCRIPTION:	DATE:

DRAWING:
**ELECTRICAL SERVICES
JOINERY & WALL LIGHTING ELEVATIONS**

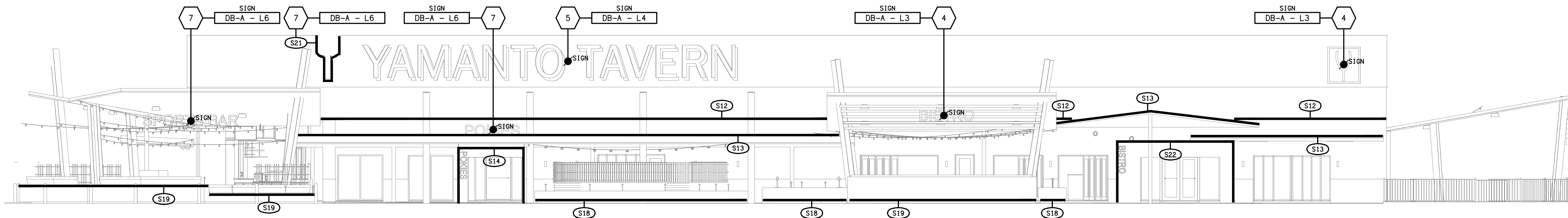
SCALE:
1:50

AT A1

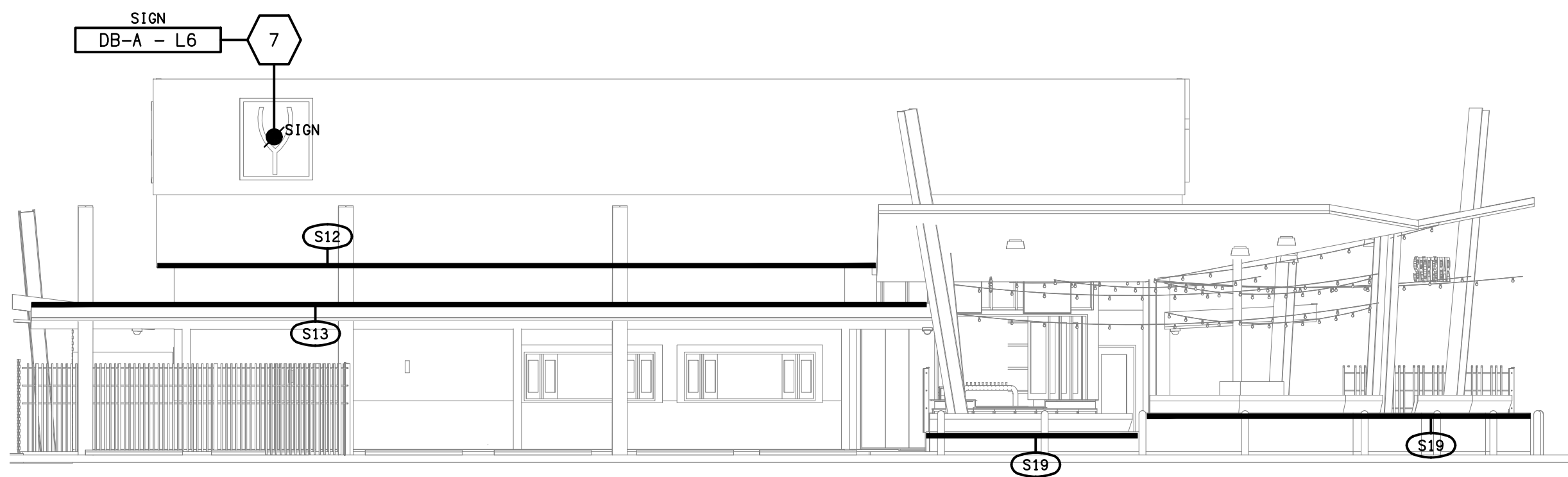
PROJECT NO:
C3637a

DRAWING NO:
E07

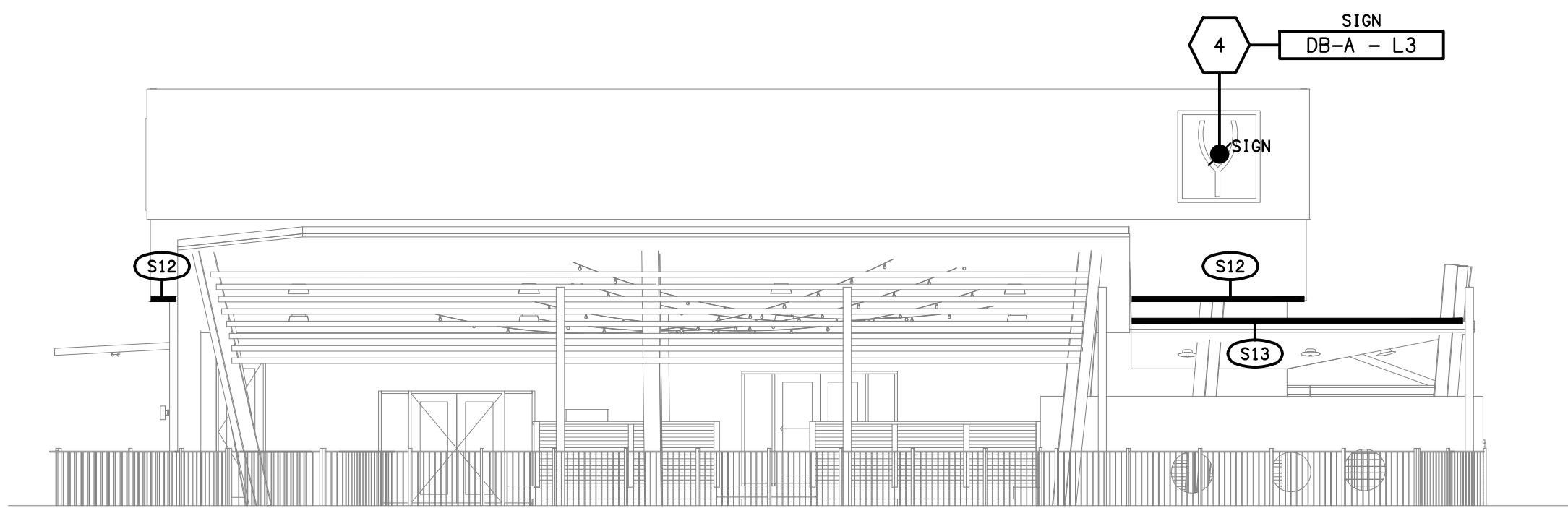
REVISION:
B



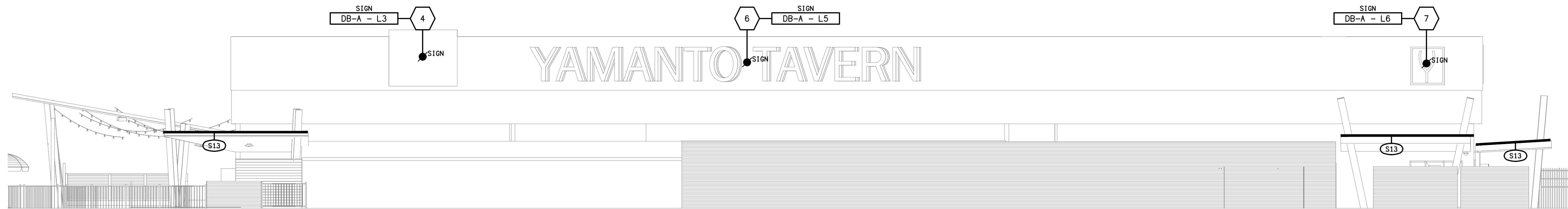
NORTH
EXTERNAL BUILDING ELEVATION
SCALE 1: 100



EAST
EXTERNAL BUILDING ELEVATION
SCALE 1: 100



WEST
EXTERNAL BUILDING ELEVATION
SCALE 1: 100



SOUTH
EXTERNAL BUILDING ELEVATION
SCALE 1: 100

NOTE:

REFER TO DRAWINGS C3637a-E05.dwg & C3637a-E06.dwg
FOR THE SWITCHING AND CIRCUITING OF THE Sx TYPE
LED STRIP LIGHTS SHOWN ON THIS DRAWING.

ELECTRICAL DESIGN GROUP BRISBANE
PTY LTD
ACN 092 710 793
TRADING AS:
ELECTRICAL DESIGN GROUP

THE COPYRIGHT OF THIS DRAWING
REMAINS THE PROPERTY OF THE
ELECTRICAL DESIGN GROUP.
USE FIGURED DIMENSIONS
IN PREFERENCE TO SCALE.
ALL DIMENSIONS TO BE
VERIFIED ONSITE.

ELECTRICAL DESIGN GROUP
ELECTRICAL BUILDING SERVICES CONSULTANTS
BRISBANE GOLD COAST

P.O.Box 15, Sherwood Q.4075
Phone: (07) 3278 4375
Email: brisbane@edg.net.au
Web: www.edg.net.au

PROJECT:
YAMANTO TAVERN

502-510 WARWICK ROAD, YAMANTO, QUEENSLAND

B	TENDER	04/11/2025
REV:	DESCRIPTION:	DATE:

DRAWING:
ELECTRICAL SERVICES
EXTERNAL BUILDING ELEVATIONS

SCALE:
1:100

AT A1

PROJECT NO:
C3637a

DRAWING NO:
E08

REVISION:
B