



# ELECTRICAL DESIGN GROUP

ELECTRICAL BUILDING SERVICES CONSULTANTS

P.O. Box 15, SHERWOOD Q. 4075

Phone: (07) 3278 4375

Website: www.edg.net.au Email: brisbane@edg.net.au

C3701a - NORTHS DEVILS RUGBY LEAGUE CLUB - CANTEEN & GAMEDAY OFFICE

C3701a-0001(A).xls

ELECTRICAL SERVICES CONTRACT DOCUMENT SCHEDULE











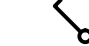


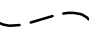
REVISION A - 15 APRIL 2026

ISSUING INFORMATION				DATE OF ISSUE							
				DAY	15						
				MONTH	04						
				YEAR	26						
				REASON FOR ISSUE	P						
A = APPROVAL				C = CONSTRUCTION				N = COORDINATION			
				P = PRELIMINARY				T = TENDER			

DISTRIBUTION				NUMBER OF COPIES							
WWW.EDG.NET.AU				1E							
CAYAS & WARD ARCHITECTS				1E							
P = PRINT				T = TRACING				D = DISC			
				E = EMAIL				F = FAX			

DOCUMENTS				REVISION							
C3701a-E01.dwg	LEGEND & DETAILS			A							
C3701a-E02.dwg	NOTES			A							
C3701a-E03.dwg	SITE PLAN			A							
C3701a-E04.dwg	FLOOR PLAN			A							
C3701a-E05.dwg	REFLECTED CEILING PLAN			A							
C3701a-0001.xls	CONTRACT DOCUMENT SCHEDULE			A							
C3701a-0002.xls	EQUIPMENT SCHEDULE										
C3701a-0004.xls	DISTRIBUTION BOARD DB-A SCHEDULE										
C3701a-0001.zip	FITTING & OUTLET DATASHEETS										

LEGEND

-  ELECTRICAL SERVICES SWITCHBOARD.
-  SWITCHBOARD / CONTROL PANEL NOT PROVIDED AS PART OF THE ELECTRICAL SUBCONTRACT.
-  ELECTRICAL CABLE TRAY AS NOTED.
-  SINGLE POWER OUTLET.
-  DOUBLE POWER OUTLET.
-  SPECIAL PURPOSE POWER OUTLET.
-  SIGN OUTLET / CONNECTION.
-  SINGLE PHASE ISOLATOR.
-  THREE PHASE ISOLATOR.
-  DALI POT DIMMER SWITCH.
-  ONE-WAY LIGHT SWITCH.
-  TWO-WAY LIGHT SWITCH.
-  CIRCUIT LINE.
-  SWITCH LINE.
- DB-x - Py

POWER CIRCUIT DESIGNATION. DENOTES DB AND CIRCUIT.

- XX

LIGHTING CONTROL CHANNEL REFERENCE.
- ELECTRICAL EQUIPMENT AS NOTED.
- RJ45 CAT-6 COMMUNICATIONS OUTLET.
- REFER TO DETAIL NOTED FOR THE AREA SHOWN HATCHED. ADDITIONAL OUTLETS & FITTINGS MAY BE SHOWN ON DETAIL.
- PA HORN SPEAKER.
- SECURITY CCTV CAMERA.
- SECURITY INTRUDER DETECTOR.
- KP

SECURITY KEY PAD.
- SECURITY PIEZO SIREN.
- SECURITY SATELLITE STROBE SIREN.
- E1

E1: GENERAL LED EMERGENCY LIGHT.
- EX

EX: EMERGENCY LED EXIT LIGHT.
- Lx

H1: COUNTER HEAT LAMP.
- L1

L1: 300 x 1200 LED FLAT PANEL LIGHT.
- L2

L2: 35 x 35 WALL MOUNTED LED EXTRUSION LIGHT.
- L3

L3: 80 x 120 SURFACE MOUNTED LED EXTRUSION LIGHT.
- L4

L4: 80 x 120 SURFACE MOUNTED LED EXTRUSION LIGHT C/W INTEGRAL EMERGENCY PACK.
- L5

L5: 80 x 120 SURFACE MOUNTED LED EXTRUSION LIGHT C/W INTEGRAL EMERGENCY PACK.
- L6

L6: 80 x 120 SURFACE MOUNTED LED EXTRUSION LIGHT.
- L7

L7: 35 x 35 WALL MOUNTED LED EXTRUSION LIGHT.
- L8

L8: WALL LED FLOOD LIGHT.
- L9

L9: WALL LED FLOOD LIGHT.

LEGEND

- L10

L10: 300 x 1200 LED FLAT PANEL DALI DIMMABLE LIGHT.
- L11

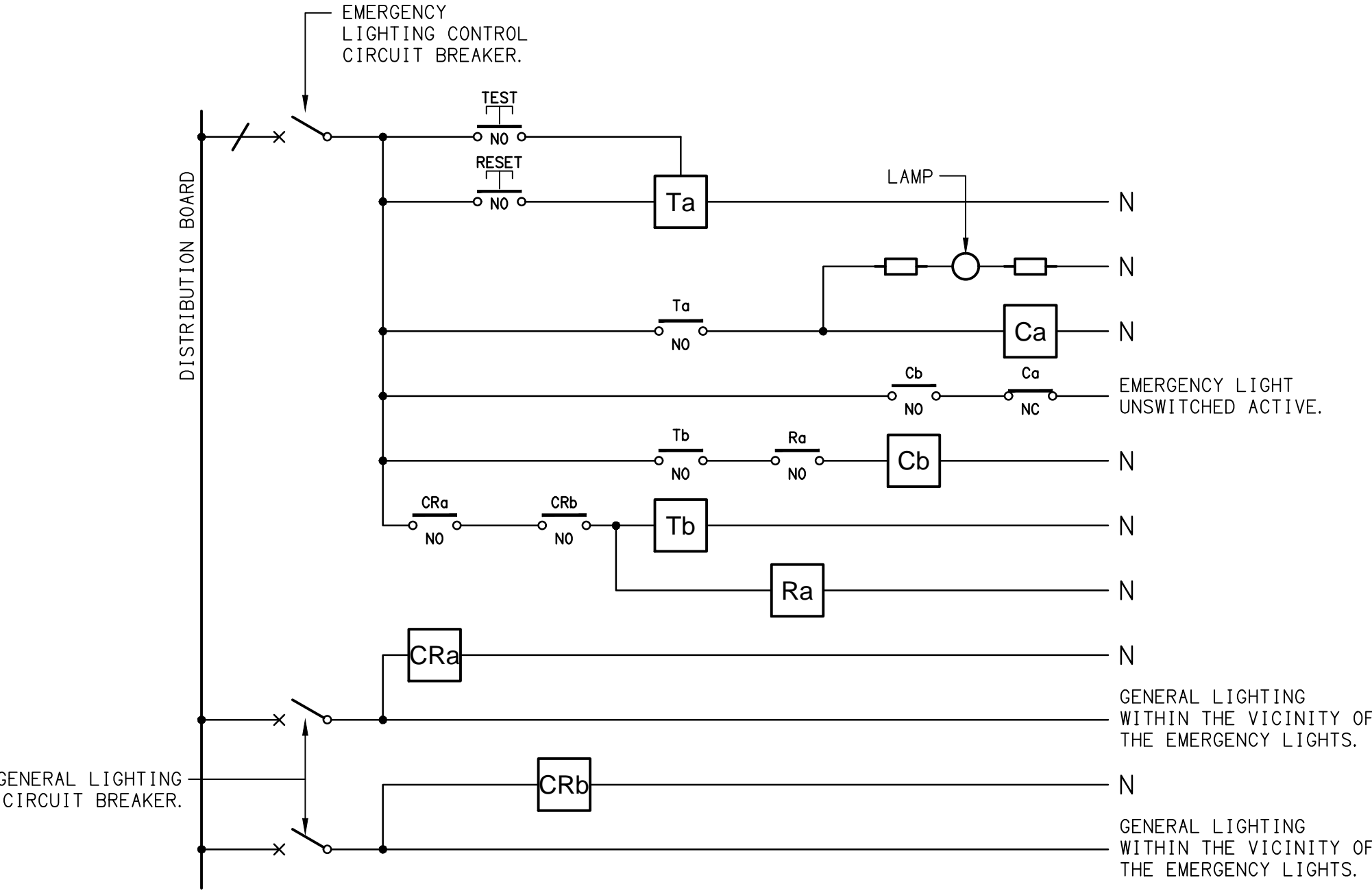
L11: LED RECESSED DOWNLIGHT.
- L12

L12: 1200 LONG LED BATTEN.
- L13

L13: WALL LED LIGHT.

EQUIPMENT:

- TEST - TEST PUSH BUTTON MOUNTED ON THE DISTRIBUTION BOARD ESCUTCHEON.
- RESET - RESET PUSH BUTTON MOUNTED ON THE DISTRIBUTION BOARD ESCUTCHEON.
- LAMP - AMBER TEST INDICATING LAMP MOUNTED ON THE DISTRIBUTION BOARD ESCUTCHEON.
- Ta - ADJUSTABLE 0-3 HOUR TIMED RELAY.
- Tb - 15 MINUTE RUN-ON TIMER TO OPERATE UPON THE RETURN OF MAINS POWER.
- Cx - CONTACTOR x.
- CRx - CONTROL RELAY x.
- Rx - RELAY x.



NOTES

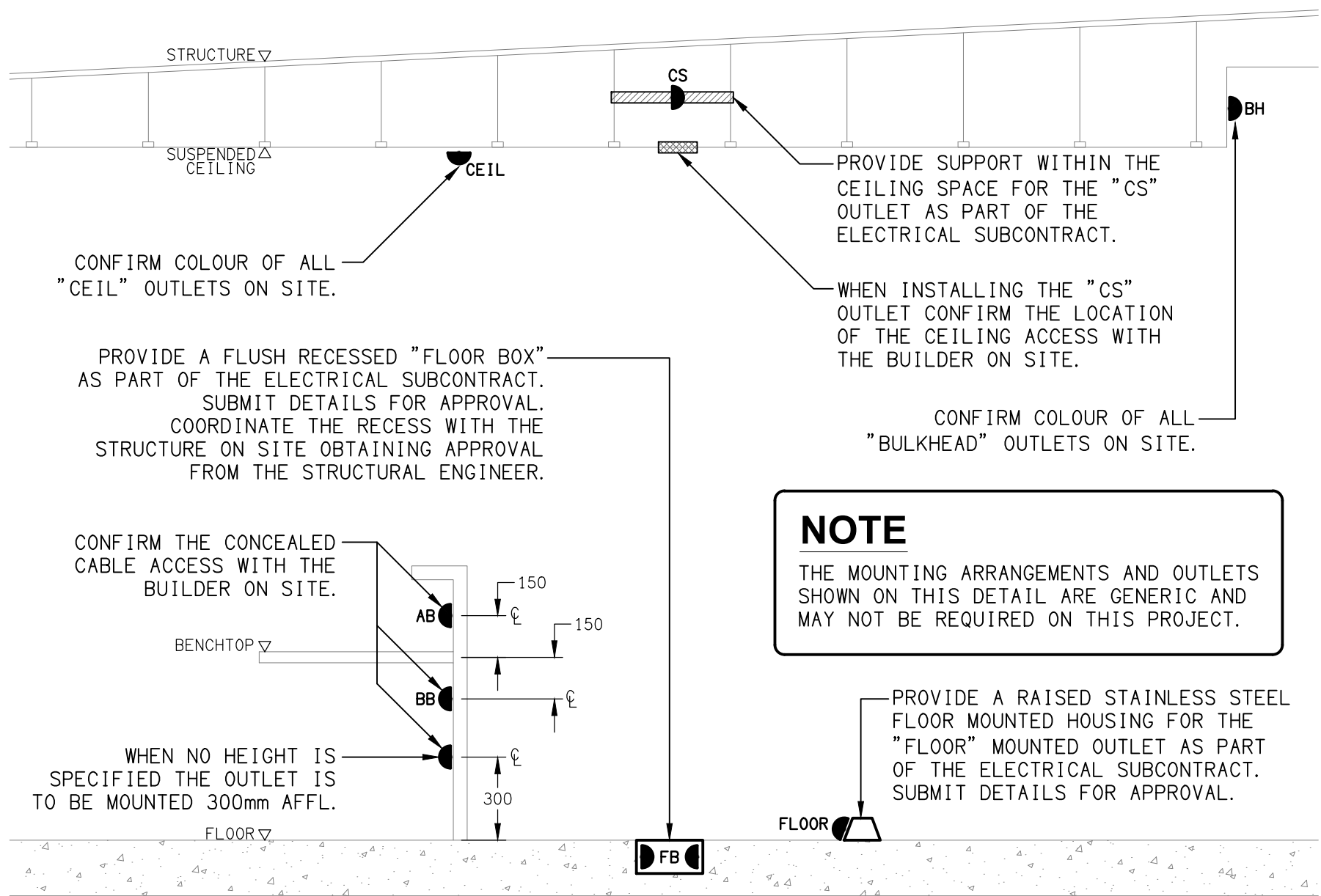
- THE EMERGENCY LIGHT UNSWITCHED ACTIVE / GENERAL LIGHTING SWITCHED ACTIVE CIRCUIT ARRANGEMENT AND CONTROL IS TYPICAL FOR ALL CIRCUITS SUPPLYING EMERGENCY LIGHTS.
- PROVIDE ADDITIONAL CONTROL RELAYS (CRx) CONFIGURED AS PER CRa AND CRb FOR ALL ADDITIONAL LIGHTING CIRCUITS THAT SUPPLY LIGHTS IN THE VICINITY OF THE EMERGENCY LIGHTS.

SCHEMATIC

EMERGENCY LIGHTING  
NOT TO SCALE

DETAIL

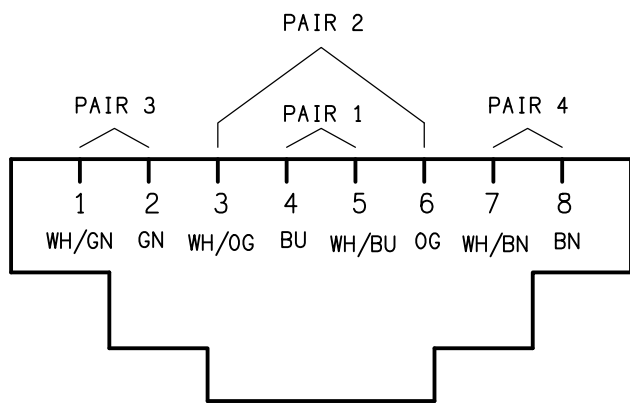
TYPICAL OUTLET MOUNTINGS  
NOT TO SCALE



NOTE

THE MOUNTING ARRANGEMENTS AND OUTLETS SHOWN ON THIS DETAIL ARE GENERIC AND MAY NOT BE REQUIRED ON THIS PROJECT.

PROVIDE A RAISED STAINLESS STEEL FLOOR MOUNTED HOUSING FOR THE "FLOOR" MOUNTED OUTLET AS PART OF THE ELECTRICAL SUBCONTRACT. SUBMIT DETAILS FOR APPROVAL.



SCHEMATIC

RJ45 PINOUT CONFIGURATION  
NOT TO SCALE

ELECTRICAL DESIGN GROUP BRISBANE  
PTY LTD  
ACN 092 710 793

TRADING AS:  
ELECTRICAL DESIGN GROUP

THE COPYRIGHT OF THIS DRAWING  
REMAINS THE PROPERTY OF THE  
ELECTRICAL DESIGN GROUP.

USE FIGURED DIMENSIONS  
IN PREFERENCE TO SCALE.

ALL DIMENSIONS TO BE  
VERIFIED ONSITE.



ELECTRICAL DESIGN GROUP

ELECTRICALBUILDINGSERVICESCONSULTANTS

BRISBANEGOLD COAST

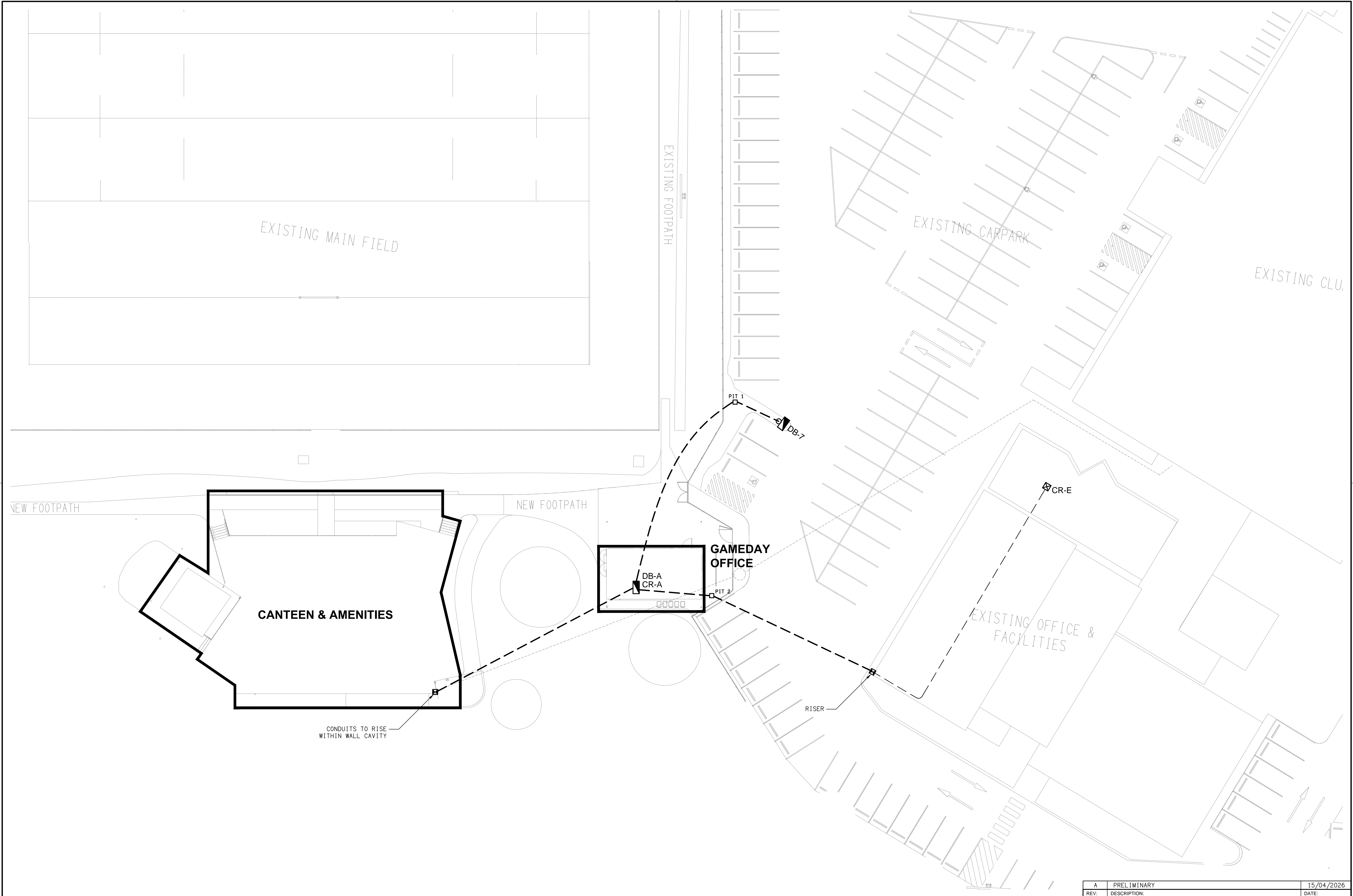
P.O.Box 15, Sherwood Q.4075  
Phone: (07) 3278 4375  
Email: brisbane@edg.net.au  
Web: www.edg.net.au


PROJECT:  
NORTHS DEVILS RUGBY LEAGUE CLUB  
CANTEEN & GAMEDAY OFFICE

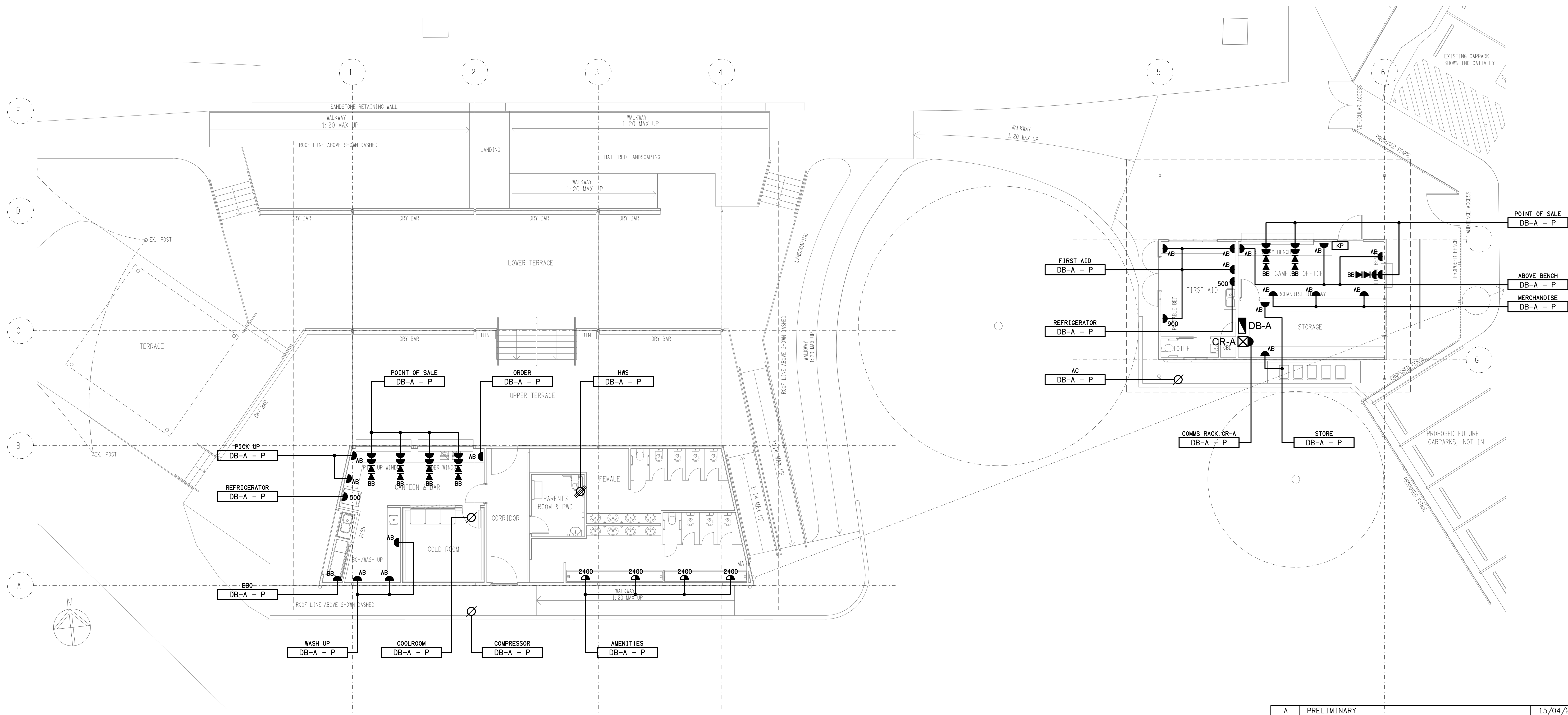
CORNER AMELIA & FRANKLIN STREETS, NUNDAH

DRAWING: ELECTRICAL SERVICES LEGEND & DETAILS	SCALE: NOT TO SCALE AT A1	PROJECT NO: C3701a	DRAWING NO: E01	REVISION: A
---	------------------------------	-----------------------	--------------------	----------------





<div>ELECTRICAL DESIGN GROUP BRISBANE PTY LTD ACN 092 710 793</div> <div>TRADING AS: ELECTRICAL DESIGN GROUP</div>	<div>THE COPYRIGHT OF THIS DRAWING REMAINS THE PROPERTY OF THE ELECTRICAL DESIGN GROUP.</div> <div>USE FIGURED DIMENSIONS IN PREFERENCE TO SCALE.</div> <div>ALL DIMENSIONS TO BE VERIFIED ONSITE.</div>	<div> <b>ELECTRICAL DESIGN GROUP</b></div> <div>ELECTRICAL BUILDING SERVICES CONSULTANTS</div> <div>BRISBANE GOLD COAST</div> <div><small>P.O.Box 15, Sherwood Q.4075 Phone: (07) 3278 4375 Email: brisbane@edg.net.au Web: www.edg.net.au</small></div>	PROJECT: <b>NORTHS DEVILS RUGBY LEAGUE CLUB CANTEN &amp; GAMEDAY OFFICE</b>		DRAWING: <b>ELECTRICAL SERVICES SITE PLAN</b>			
			CORNER AMELIA & FRANKLIN STREETS, NUNDAH		SCALE: 1:200		PROJECT NO: <b>C3701a</b>	
					AT A1		DRAWING NO: <b>E03</b>	
				REVISION: <b>A</b>		DATE: 15/04/2026		



ELECTRICAL DESIGN GROUP BRISBANE  
PTY LTD  
ACN 092 710 793  
TRADING AS:  
ELECTRICAL DESIGN GROUP

THE COPYRIGHT OF THIS DRAWING  
REMAINS THE PROPERTY OF THE  
ELECTRICAL DESIGN GROUP.  
USE FIGURED DIMENSIONS  
IN PREFERENCE TO SCALE.  
ALL DIMENSIONS TO BE  
VERIFIED ONSITE.

**ELECTRICAL DESIGN GROUP**  
ELECTRICAL BUILDING SERVICES CONSULTANTS  
BRISBANE GOLD COAST

P.O.Box 15, Sherwood Q.4075  
Phone: (07) 3278 4375  
Email: brisbane@edg.net.au  
Web: www.edg.net.au

PROJECT:  
**NORTHS DEVILS RUGBY LEAGUE CLUB  
CANTEEN & GAMEDAY OFFICE**

CORNER AMELIA & FRANKLIN STREETS, NUNDAH

A	PRELIMINARY	15/04/2026
REV:	DESCRIPTION:	DATE:

DRAWING:  
**ELECTRICAL SERVICES  
FLOOR PLAN**

SCALE:  
1:100

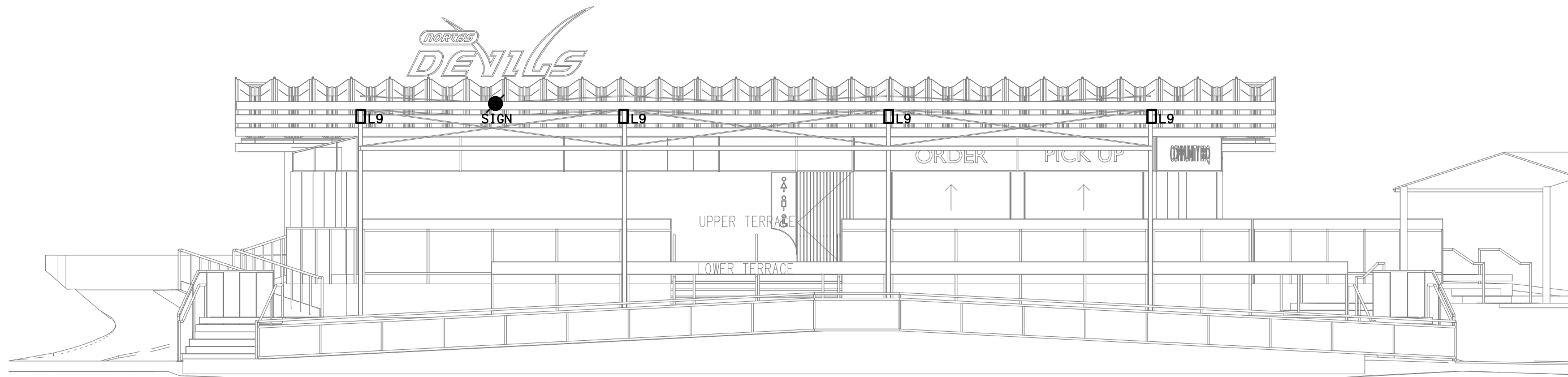
AT A1

PROJECT NO:  
**C3701a**

DRAWING NO:  
**E04**

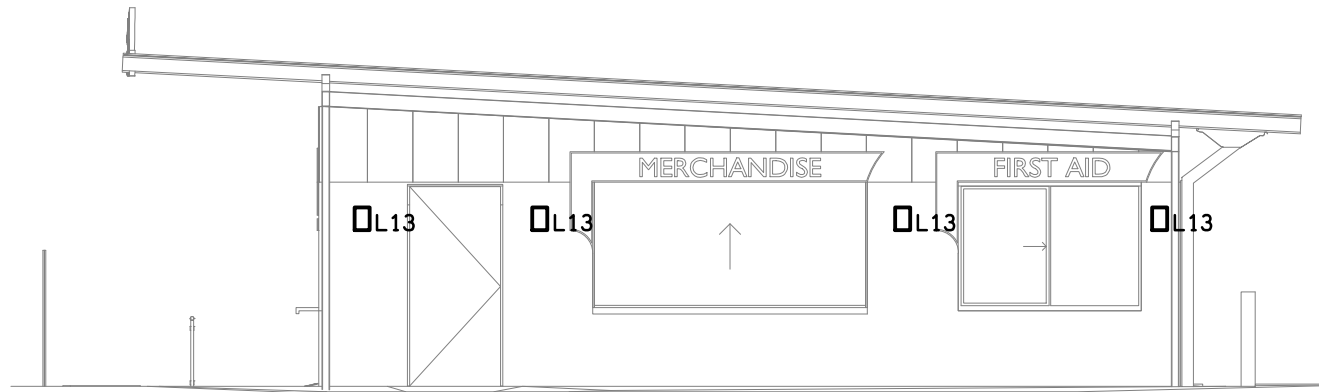
REVISION:  
**A**



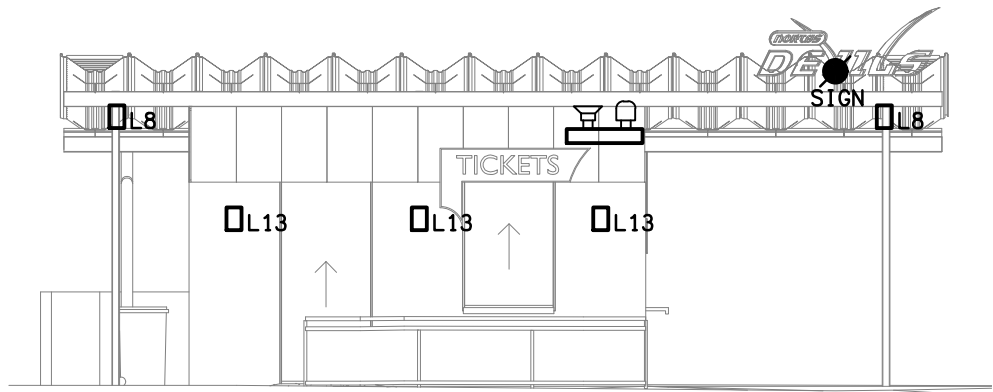


**NORTH**  
CANTEEN BUILDING ELEVATION  
SCALE 1: 100

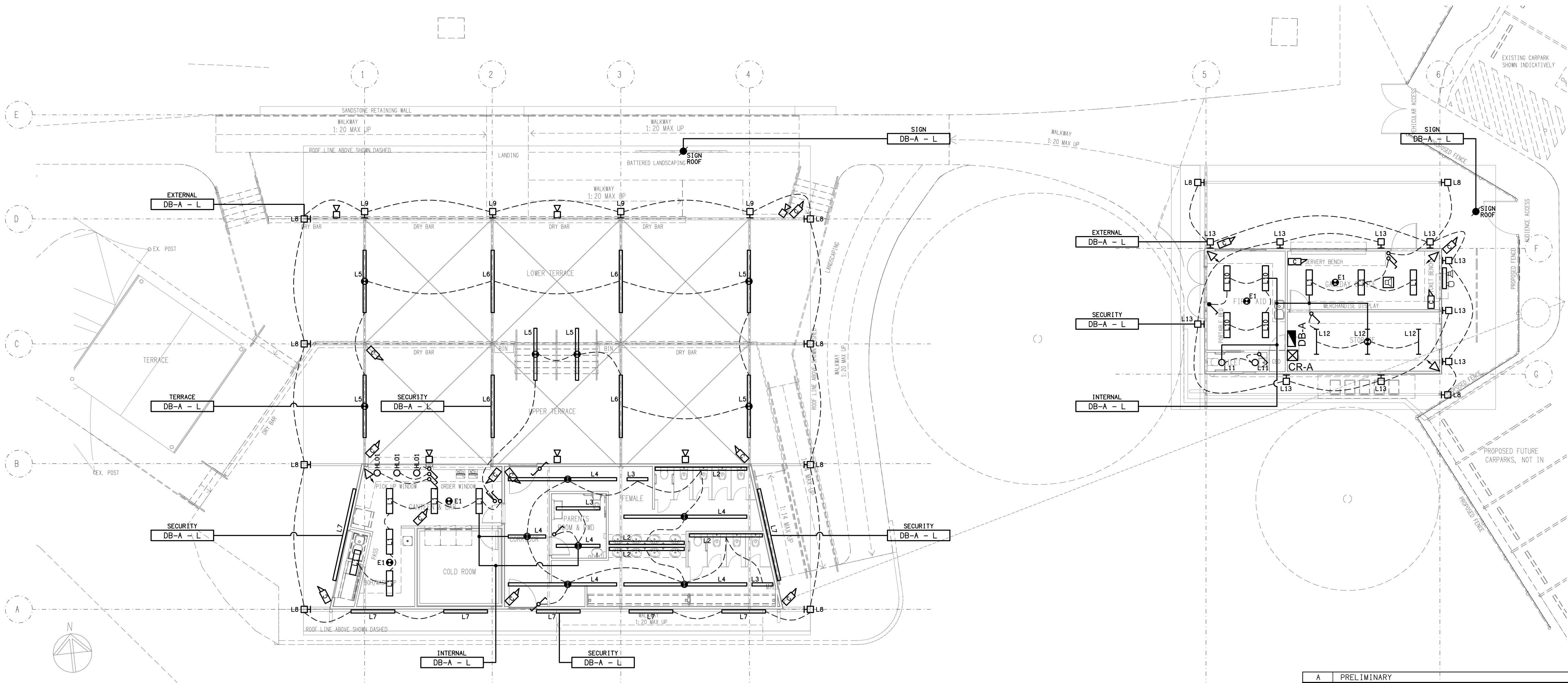
**NOTE:**  
THE ELECTRICAL FITTINGS AND OUTLETS  
SHOWN ON THESE ELEVATIONS ARE ALSO  
SHOWN ON THE REFLECTED CEILING PLANS.



**NORTH**  
GAMEDAY OFFICE ELEVATION  
SCALE 1: 100



**EAST**  
GAMEDAY OFFICE ELEVATION  
SCALE 1: 100



ELECTRICAL DESIGN GROUP BRISBANE  
PTY LTD  
ACN 092 710 793  
TRADING AS:  
ELECTRICAL DESIGN GROUP

THE COPYRIGHT OF THIS DRAWING  
REMAINS THE PROPERTY OF THE  
ELECTRICAL DESIGN GROUP.  
USE FIGURED DIMENSIONS  
IN PREFERENCE TO SCALE.  
ALL DIMENSIONS TO BE  
VERIFIED ONSITE.

**ELECTRICAL DESIGN GROUP**  
ELECTRICAL BUILDING SERVICES CONSULTANTS  
BRISBANE GOLD COAST

P.O. Box 15, Sherwood Q.4075  
Phone: (07) 3278 4375  
Email: brisbane@edg.net.au  
Web: www.edg.net.au

PROJECT:  
**NORTHS DEVILS RUGBY LEAGUE CLUB  
CANTEEN & GAMEDAY OFFICE**

CORNER AMELIA & FRANKLIN STREETS, NUNDAH

A	PRELIMINARY	15/04/2026
REV:	DESCRIPTION:	DATE:

DRAWING:  
**ELECTRICAL SERVICES  
REFLECTED CEILING PLAN**

SCALE:  
1:100

AT A1

PROJECT NO:  
**C3701a**

DRAWING NO:  
**E05**

REVISION:  
**A**