



# ELECTRICAL DESIGN GROUP

ELECTRICAL BUILDING SERVICES CONSULTANTS

P.O. Box 15, SHERWOOD Q. 4075

Phone: (07) 3278 4375

Website: www.edg.net.au Email: brisbane@edg.net.au

C3702a - KALLANGUR MEMORIAL BOWLS CLUB

C3702a-0001(C).xls

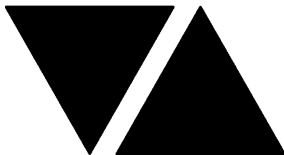
## ELECTRICAL SERVICES CONTRACT DOCUMENT SCHEDULE

REVISION C - 23 APRIL 2026

ISSUING INFORMATION				DATE OF ISSUE							
	DAY	15	16	23							
	MONTH	04	04	04							
	YEAR	26	26	26							
REASON FOR ISSUE				P	T	T					
A = APPROVAL				C = CONSTRUCTION				N = COORDINATION			
				P = PRELIMINARY				T = TENDER			

DISTRIBUTION				NUMBER OF COPIES							
WWW.EDG.NET.AU				1E	1E	1E					
CAYAS & WARD ARCHITECTS				1E	1E	1E					
P = PRINT				T = TRACING				D = DISC			
				E = EMAIL				F = FAX			

DOCUMENTS		REVISION									
C3702a-E01.dwg	LEGEND & DETAILS	A	B	C							
C3702a-E02.dwg	NOTES	A		B							
C3702a-E03.dwg	SITE PLAN & SCHEMATIC	A									
C3702a-E04.dwg	FLOOR PLAN	A		B							
C3702a-E05.dwg	REFLECTED CEILING PLAN	A	B	C							
C3702a-0001.xls	CONTRACT DOCUMENT SCHEDULE	A	B	C							
C3702a-0002.xls	EQUIPMENT SCHEDULE	A	B	C							
C3702a-0004.xls	DISTRIBUTION BOARD DB-A SCHEDULE	A									
C3702a-0005.xls	DISTRIBUTION BOARD DB-B SCHEDULE	A									



# ELECTRICAL DESIGN GROUP

ELECTRICAL BUILDING SERVICES CONSULTANTS

P.O. Box 15, SHERWOOD Q. 4075

Phone: (07) 3278 4375 Fax: (07) 3716 0222

Web Site: [www.edg.net.au](http://www.edg.net.au) Email: [brisbane@edg.net.au](mailto:brisbane@edg.net.au)

## C3702a - KALLANGUR MEMORIAL BOWLS CLUB

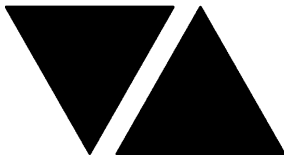
C3702a-0002(C).xls

### ELECTRICAL EQUIPMENT SCHEDULE

REVISION C - 23 APRIL 2026

THE LIGHT FITTING SUPPLIER CONTACT DETAILS MAY BE AVAILABLE ON THE EDG WEBSITE VIA THE FOLLOWING LINK  
[www.edg.net.au/Links/Lighting.htm](http://www.edg.net.au/Links/Lighting.htm)

TYPE	LAMPS	DESCRIPTION	COLOUR / ACCESSORY	CATALOGUE No	REV
WL01	2 X 8W 27000K GU10 240V LED	WALL MOUNTED IP65 UP DOWN FITTING WITH THE MOUNTING HEIGHT CONFIRMED ON SITE WITH THE ARCHITECT	BLACK	EQUAL TO ORE LIGHTING SHO.1215.MB	A
SL03	15W LED	SURFACE MOUNTED 60 DEG CAN DOWNLIGHT C/W INTEGRAL DRIVER	WHITE	RAPID LED R1141-WH- WH-60-SM	A
RD01	13W LED	RECESSED DOWNLIGHT C/W REMOTE TRAILING EDGE DIMMABLE DRIVER	WHITE	RAPID LED R1051	A
RD02	13W LED	RECESSED DOWNLIGHT C/W REMOTE TRAILING EDGE DIMMABLE DRIVER	WHITE	RAPID LED R1051	A
RD03	RECESSED DOWNLIGHT TO MATCH THE EXISTING ADJACENT RDE FITTING IN APPEARANCE OUTPUT AND CONTROL.				A
RD04	25W 4000K LED	RECESSED DOWNLIGHT C/W REMOTE DALI DIMMABLE DRIVER	WHITE	RAPID R1353-WH- 25W-DALI	A
RD05	NO LONGER REQUIRED				C
RDE	EXISTING RECESSED DOWNLIGHT TO REMAIN				A
SLE	EXISTING SURFACE MOUNTED FITTING TO REMAIN				A
CR01	EXISTING COOL ROOM LIGHT FITTING TO REMAIN				B
SL01	EXISTING SURFACE MOUNTED FITTING TO REMAIN				B
PD10	WARM WHITE LED	REPLACE THE EXISTING POOL TABLE LIGHTS	NATURAL WOOD	FAT SHACK VINTAGE WOODBAY CCT LED LINEAR 1200	A
PD11	NO LONGER REQUIRED				C
RT01	30W 4000K LED	REPLACE THE EXISTING SURFACE MOUNTED BATTEN WITH A RECESSED 300 X 1200 PANEL LIGHT C/W RECESS KIT AND REMOTE DRIVER	WHITE	RAPID LED R3206-TRI- RM	B
RT02	30W 4000K LED	RECESSED 300 X 1200 PANEL LIGHT C/W RECESS KIT AND REMOTE DRIVER	WHITE	RAPID LED R3206-TRI- RM	B
RT03	16W 4000K LED	REPLACE THE EXISTING SURFACE MOUNTED BATTEN WITH A RECESSED 300 X 600 PANEL LIGHT C/W RECESS KIT AND REMOTE DRIVER	WHITE	RAPID LED R3207-TRI- RM	B



# ELECTRICAL DESIGN GROUP

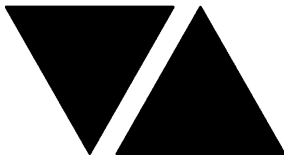
ELECTRICAL BUILDING SERVICES CONSULTANTS

P.O. Box 15, SHERWOOD Q. 4075

Phone: (07) 3278 4375 Fax: (07) 3716 0222

Web Site: [www.edg.net.au](http://www.edg.net.au) Email: [brisbane@edg.net.au](mailto:brisbane@edg.net.au)

C3702a - KALLANGUR MEMORIAL BOWLS CLUB					C3702a-0002(C).xls
ELECTRICAL EQUIPMENT SCHEDULE					
REVISION C - 23 APRIL 2026					
THE LIGHT FITTING SUPPLIER CONTACT DETAILS MAY BE AVAILABLE ON THE EDG WEBSITE VIA THE FOLLOWING LINK <a href="http://www.edg.net.au/Links/Lighting.htm">www.edg.net.au/Links/Lighting.htm</a>					
TYPE	LAMPS	DESCRIPTION	COLOUR / ACCESSORY	CATALOGUE No	REV
S1	NO LONGER REQUIRED				C
E1	LED	EMERGENCY LIGHT: RECESSED NON-MAINTAINED EMERGENCY LIGHT. AS2293 CLASSIFICATION C0-D63 - C90-D63.	WHITE	CLEVERTRONICS CLIFE-PRO	A
E2	EXISTING EMERGENCY LIGHT TO BE REMOVED				A
EX	LED	EXIT LIGHT: MAINTAINED 24M VIEWING DISTANCE EXIT LIGHT C/W DIFFUSERS & DIRECTIONAL ARROWS AS SHOWN. CEILING SURFACE MOUNT OR WALL MOUNT BETWEEN 2100mm & 2700mm AFFL IF THERE IS NO VERTICAL SURFACE TO MOUNT THE FITTING ON WITHIN THIS RANGE CONFIRM THE MOUNTING HEIGHT WITH THE ENGINEER. AS2293 CLASSIFICATION C0- D1.25- C90-D2	WHITE	CLEVERTRONICS LUBPRO-SM	A
CHANNEL x		CONTROL CHANNEL WITH A NUMERICAL REFERENCE. REFER TO THE POWER AND LIGHTING CONTROL SCHEMATIC / SCHEDULE			A
EXISTING CEILING FAN (FE)		EXISTING CEILING FAN TO REMAIN AS IS			A
ONE-WAY LIGHT SWITCH		ONE-WAY LIGHT SWITCH C/W CIRCUIT IDENTIFICATION ON THE FACEPLATE BEHIND THE SURROUND MOUNTED AT 1000mm AFFL UNLESS NOTED OTHERWISE.	WHITE	CLIPSAL C2000 SERIES 30USM	A
TWO-WAY LIGHT SWITCH		TWO-WAY LIGHT SWITCH C/W CIRCUIT IDENTIFICATION ON THE FACEPLATE BEHIND THE SURROUND MOUNTED AT 1000mm AFFL UNLESS NOTED OTHERWISE.	WHITE	CLIPSAL C2000 SERIES 30USM	A
TRAILING EDGE DIMMER (TE)		400VA PHASE CUT TRAILING EDGE POT DIMMER	WHITE	CLIPSAL C2000 SERIES	A
DALI POT DIMMER / SWITCH		ONE-WAY DALI LIGHT SWITCH / DIMMER C/W CIRCUIT IDENTIFICATION ON THE FACEPLATE BEHIND THE SURROUND MOUNTED AT 1000mm AFFL UNLESS NOTED OTHERWISE.	WHITE	SMARTSCAPE DALI RD20 CLIPSAL C2000	A
LIGHTING CONTROL SWITCH PANEL (SP1)		ADD TO THE EXISTING LIGHTING CONTROL SWITCH PANEL AS PER THE LIGHTING CONTROL SCHEMATIC			A
SINGLE POWER OUTLET		SINGLE POWER OUTLET C/W CIRCUIT IDENTIFICATION ON THE FACEPLATE BEHIND THE SURROUND MOUNT AT 300mm AFFL U.N.O. RATING 10A U.N.O.	WHITE	CLIPSAL C2000 SERIES	A
DOUBLE POWER OUTLET		DOUBLE POWER OUTLET C/W CIRCUIT IDENTIFICATION ON THE FACEPLATE BEHIND THE SURROUND MOUNT AT 300mm AFFL U.N.O. RATING 10A U.N.O.	WHITE	CLIPSAL C2000 SERIES	A



# ELECTRICAL DESIGN GROUP

ELECTRICAL BUILDING SERVICES CONSULTANTS

P.O. Box 15, SHERWOOD Q. 4075

Phone: (07) 3278 4375 Fax: (07) 3716 0222

Web Site: [www.edg.net.au](http://www.edg.net.au) Email: [brisbane@edg.net.au](mailto:brisbane@edg.net.au)

## C3702a - KALLANGUR MEMORIAL BOWLS CLUB

C3702a-0002(C).xls

### ELECTRICAL EQUIPMENT SCHEDULE

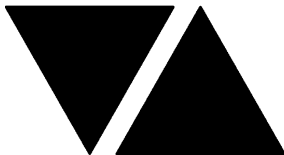
REVISION C - 23 APRIL 2026

THE LIGHT FITTING SUPPLIER CONTACT DETAILS MAY BE AVAILABLE ON THE EDG WEBSITE VIA THE FOLLOWING LINK  
[www.edg.net.au/Links/Lighting.htm](http://www.edg.net.au/Links/Lighting.htm)

TYPE	LAMPS	DESCRIPTION	COLOUR / ACCESSORY	CATALOGUE No	REV
SINGLE-PHASE ISOLATOR		SINGLE-PHASE WEATHERPROOF ISOLATOR. MOUNT AT 1350mm AFFL U.N.O. RATING 20A U.N.O. CONNECT TO EQUIPMENT VIA FLEXIBLE CONDUIT.	-	CLIPSAL WHT20	A
THREE-PHASE ISOLATOR		THREE-PHASE WEATHERPROOF ISOLATOR. MOUNT AT 1350mm AFFL U.N.O. RATING 20A U.N.O. CONNECT TO EQUIPMENT VIA FLEXIBLE CONDUIT.	-	CLIPSAL WHT35	A
SIGN CONNECTION		COORDINATE THE LOCATION AND CONNECTION WITH THE SIGN CONTRACTOR ENSURING THE GPO / ISOLATORS ARE PROVIDED WITH APPROPRIATE WEATHER PROTECTION AND ARE CONCEALED FROM VIEW.			A
SECURITY EQUIPMENT		SECURITY EQUIPMENT WALL MOUNTED AT HIGH LEVEL. ENSURE THE POWER AND COMMUNICATIONS OUTLETS SUPPLYING THE SECURITY EQUIPMENT ARE MOUNTED WITHIN THE SECURITY EQUIPMENT HOUSINGS SUCH THAT THE OUTLETS AND 240 VOLT FLEXES ARE NOT VISIBLE UNDER NORMAL CONDITIONS.			A
PIEZO SIREN		FLUSH RECESSED WHITE PIEZO SIREN SUBMIT DETAILS OF THE PIEZO SIREN FOR APPROVAL PRIOR TO ORDERING			A
SECURITY STROBE		WALL MOUNTED AT HIGH LEVEL SECURITY SYSTEM SATELLITE STROBE. SUBMIT DETAILS OF THE STROBE INCLUDING ITS MOUNTING POSITION FOR APPROVAL PRIOR TO ORDERING.			A
KEY PAD (KP)		SECURITY ARMING / DISARMING KEY PAD WALL MOUNTED. SUBMIT DETAILS OF THE KEY PAD AND ENCLOSURE FOR APPROVAL PRIOR TO ORDERING.			A
INTRUDER DETECTOR		DUAL-TECHNOLOGY 360 DEG MOVEMENT DETECTORS CEILING RECESSED MOUNTED AS PER THE MANUFACTURER'S SPECIFICATION. CONNECT TO THE SECURITY EQUIPMENT WITH ONE DETECTOR PER ZONE. SUBMIT DETAILS OF THE DETECTORS INCLUDING THE MOUNTING ARRANGEMENTS FOR APPROVAL PRIOR TO ORDERING.			A
DB-A		EXISTING MSB / DISTRIBUTION BOARD DB-A TO BE MODIFIED AS PER THE DB-A SCHEDULE AND RESUPPLIED FROM THE NEW MSB AS PER THE POWER SCHEMATIC / NOTES. REMOVE ALL COMPONENTS MADE REDUNDANT BY THE WORKS AND UPDATE THE CIRCUIT SCHEDULE AT PRACTICAL COMPLETION WITH THE CIRCUIT USE AND LOCATION.			A
DB-B		DISTRIBUTION BOARD DB-B AS PER THE DB-B SCHEDULE AND NOTES. PROVIDE A SHOP DRAWING OF DB-B FOR APPROVAL.			A
MSB		MAIN SWITCHBOARD AS PER THE POWER SCHEMATIC AND NOTES. PROVIDE A SHOP DRAWING OF THE MAIN SWITCHBOARD FOR APPROVAL.			A
REVENUE METER (M1)		NEM CODE COMPLIANT CT RETAIL METER INCLUDING ALL ASSOCIATED COMPONENTS INCLUDING THE METERS AND CTS ETC.			A
REVENUE METER (M2)		NEM CODE COMPLIANT DIRECT WIRED RETAIL METER INCLUDING ALL ASSOCIATED COMPONENTS INCLUDING THE METERS AND FUSED LINKS ETC.			A
SPEAKER		RECESSED 265 DIA DUAL CONE SPEAKER C/W 100V MULTI-TAP TRANSFORMER AND FLUSH GRILLE WIRED TO THE AMPLIFIER MOUNTED IN THE COMMUNICATIONS RACK CR-B	WHITE GRILLE	EQUAL TO BOSCH LBC 3099/41	A

C3702a-0002(C).xls

Pages inc. any attach. 3 of 4



# ELECTRICAL DESIGN GROUP

ELECTRICAL BUILDING SERVICES CONSULTANTS

P.O. Box 15, SHERWOOD Q. 4075

Phone: (07) 3278 4375 Fax: (07) 3716 0222

Web Site: [www.edg.net.au](http://www.edg.net.au) Email: [brisbane@edg.net.au](mailto:brisbane@edg.net.au)

C3702a - KALLANGUR MEMORIAL BOWLS CLUB					C3702a-0002(C).xls
ELECTRICAL EQUIPMENT SCHEDULE					
REVISION C - 23 APRIL 2026					
THE LIGHT FITTING SUPPLIER CONTACT DETAILS MAY BE AVAILABLE ON THE EDG WEBSITE VIA THE FOLLOWING LINK <a href="http://www.edg.net.au/Links/Lighting.htm">www.edg.net.au/Links/Lighting.htm</a>					
TYPE	LAMPS	DESCRIPTION	COLOUR / ACCESSORY	CATALOGUE No	REV
MATV		UPGRADE THE EXISTING MATV SYSTEM TO ACCOMMODATE THE ADDITIONAL TV OUTLETS CONNECT THE ADDITIONAL OUTLETS TO THE DISTRIBUTION EQUIPMENT VIA RG6 CABLING.	WHITE	CLIPSAL C2000 SERIES	A
COMMUNICATIONS RACK (CR-A)		NO LONGER REQUIRED			C
COMMUNICATIONS RACK (CR-B)		WALL MOUNTED HINGED 18 RU MINIMUM 600 DEEP 600 WIDE RACK CR-B PROVIDE A SHOP DRAWING OF THE RACK. PROVIDE THE RACK WITH A RACK MOUNTED NBN NTD AND PATCH PANELS TO ACCOMMODATE THE RSL COMMUNICATIONS OUTLETS. MOUNT THE PA AMPLIFIER IN THE TOP OF THE RACK. PROVIDE THE RACK WITH A REAR HORIZONTAL 10 PORT 10 AMP POWER RAIL.		4 CABLING SKU 002.001.4280	A
COMMUNICATIONS OUTLET		RSL RJ45 CAT-6 COMMUNICATIONS OUTLET, CABLED BACK TO CAT 6 PATCH PANELS IN RACK CR-B VIA 4-PAIR CAT-6 UTP CABLE. MOUNT UP TO 3 RJ45 OUTLETS PER MULTI-GANG FACEPLATE WITH SEPARATE PERMANENT LABELLING FOR EACH OUTLET. MOUNT AT 300 AFFL UNLESS NOTED OTHERWISE	WHITE	CLIPSAL C2000 SERIES	A
CAT 6 GAMING OUTLET		NO LONGER REQUIRED			C
GAMING FIBRE (GF)		NO LONGER REQUIRED			C
POWER PIT 1		600 X 600 CLEAR INTERNAL X 1000 DEEP INSITU POWER PIT C/W A REINFORCED CONCRETE SURROUND AND A CLASS C STEEL LID WITH A SLIP RESISTANCE OF R10 SUBMIT DETAILS OF THE PIT, LID AND AN INSTALLATION SECTION FOR APPROVAL. PROVIDE A 100 DIA CONDUIT FROM THE PIT TO THE PROPERTY POLE TO ACCOMMODATE THE CONSUMERS MAINS. INTERCONNECT PIT 1 TO PIT 2 VIA A 100 DIA CONDUIT TO ACCOMMODATE THE CONSUMERS MAINS.			A
POWER PIT 2		600 X 600 CLEAR INTERNAL X 1000 DEEP INSITU POWER PIT C/W A REINFORCED CONCRETE SURROUND AND A CLASS C STEEL LID WITH A SLIP RESISTANCE OF R10 SUBMIT DETAILS OF THE PIT, LID AND AN INSTALLATION SECTION FOR APPROVAL. PROVIDE A 100 DIA CONDUIT FROM THE PIT TO THE MSB TO ACCOMMODATE THE CONSUMERS MAINS. INTERCONNECT PIT 1 TO PIT 2 VIA A 100 DIA CONDUIT TO ACCOMMODATE THE CONSUMERS MAINS.			A



# ELECTRICAL DESIGN GROUP

ELECTRICAL BUILDING SERVICES CONSULTANTS

P.O. Box 15, SHERWOOD Q. 4075

Phone: (07) 3278 4375

Website: [www.edg.net.au](http://www.edg.net.au) Email: [brisbane@edg.net.au](mailto:brisbane@edg.net.au)

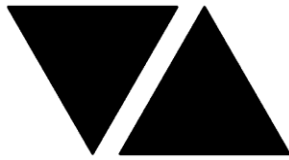
C3702a - KALLANGUR MEMORIAL BOWLS CLUB

C3702a-0004(A).xls

DISTRIBUTION BOARD DB-A

REVISION A - 15 APRIL 2026

							REV
FAULT CURRENT: 6kA							A
MAIN SWITCH: EXISTING							A
CHASSIS SIZE: EXISTING							A
SUPPLIED FROM: MSB							A
CHASSIS RATING: 250A							A
CABLE: 4C 70							A
PHASES: A							A
UPDATE THE EXISTING DISTRIBUTION BOARD TO ACCOMMODATE THE FOLLOWING CIRCUITS. REMOVE ALL COMPONENTS MADE REDUNDANT BY THE WORKS AND UPDATE THE CIRCUIT SCHEDULE AT PRACTICAL COMPLETION WITH THE CIRCUIT USE AND LOCATION.							A
CIRC	PH	CIRCUIT BREAKER (amps)	CONTROL EQUIPMENT	CABLE SIZE ( mm <sup>2</sup> )	LOCATION	CIRCUIT USE	
P1	1	20	RCBO	2.5	OFFICE	CR-A	A
P2	1	20	RCBO	2.5		AC	A
P3	1	20	RCBO	2.5		AC	A
P4	1	20	RCBO	2.5	EXTERNAL	AC	A
P5	1	20	RCBO	2.5	GAMING	MODEM	A
P6	1	20	RCBO	2.5	GAMING	SIGNS	A
P7	1	20	RCBO	2.5	GAMING	FAN	A
P8	1	20	RCBO	2.5	GAMING	GAMING MACHINE	A
P9	1	20	RCBO	2.5	GAMING	GAMING MACHINE	A
L1	1	20	RCBO	2.5	INTERNAL	LIGHTS	A
L2	1	20	RCBO PE CELL ON DUSK OFF DAWN	2.5	EXTERNAL	SECURITY LIGHTS	A
L3	1	20	RCBO PE CELL ON DUSK OFF TC	2.5	EXTERNAL	LIGHTS	A
L4	1	20	RCBO PE CELL ON DUSK OFF TC	2.5	EXTERNAL	SIGNS	A



# ELECTRICAL DESIGN GROUP

ELECTRICAL BUILDING SERVICES CONSULTANTS

P.O. Box 15, SHERWOOD Q. 4075

Phone: (07) 3278 4375

Website: [www.edg.net.au](http://www.edg.net.au) Email: [brisbane@edg.net.au](mailto:brisbane@edg.net.au)

C3702a - KALLANGUR MEMORIAL BOWLS CLUB

C3702a-0005(A).xls

DISTRIBUTION BOARD DB-B

REVISION A - 15 APRIL 2026

FAULT CURRENT: 6kA							250A NON AUTO LOAD BREAK	REV
MAIN SWITCH:								A
CHASSIS SIZE: 72 POLES								A
SUPPLIED FROM: MSB								A
CHASSIS RATING: 250A							CABLE: 4C16	A
PHASES: A								A
PROVIDE THE DB WITH A FULL WIDTH EMPTY DIN RAIL TO ACCOMMODATE FUTURE CONTACTORS AND CONTROLS IN ADDITION TO THE CONTROLS INCLUDING THE CONTROL PROVIDED AS PART OF THE INITIAL WORKS. PROVIDE THE DB WITH AN AS2293 EMERGENCY LIGHTING CONTROL SYSTEM TO CONTROL THE ASSOCIATED EMERGENCY LIGHTS. PROVIDE THE DB WITH SURGE PROTECTION. DB-B MUST BE AT LEASTE 580 WIDE.							A	
CIRC	PH	CIRCUIT BREAKER (amps)	CONTROL EQUIPMENT	CABLE SIZE ( mm <sup>2</sup> )	LOCATION	CIRCUIT USE		
P1	1	20	RCBO	2.5	RSL	CR-B	A	
P2	1	20	RCBO	2.5	RSL	CR-B	A	
P3	1	20	RCBO	2.5	RSL	SECURITY	A	
P4	1	20	RCBO	2.5	RSL	LOBBY	A	
P5	1	20	RCBO	2.5	RSL	AC	A	
P6	1	20	RCBO	2.5	RSL	RECEPTION	A	
P7	1	20	RCBO	2.5	RSL	AC	A	
P8	1	20	RCBO	2.5	RSL	AC	A	
P9	1	20	RCBO	2.5	RSL	OFFICE	A	
P10	3	32	RCBO	6.0	EXTERNAL	AC	A	
P11	1	20	RCBO	2.5	EXTERNAL	AC	A	
P12	1	20	RCBO	2.5	RSL	AC	A	
P13	1	20	RCBO	2.5	RSL	LOUNGE	A	
P14	1	20	RCBO	2.5	RSL	AC	A	
P15	1	20	RCBO	2.5	RSL	AC	A	
P16	1	20	RCBO	2.5	RSL	ACTIVITY ROOM	A	
P17	1	20	RCBO	2.5	KITCHEN	AB GPO	A	
P18	1	20	RCBO	2.5	KITCHEN	APPLIANCES	A	
P19	1	40	RCBO	6.0	KITCHEN	19.4KW HWS	A	
P20	1	20	RCBO	2.5	KITCHEN	AUTO BOILER	A	
P21	1	3	RCBO	2.5	KITCHEN	REF	A	
L1	1	20	RCBO	2.5	RSL	LIGHTS	A	
L2	1	20	RCBO	2.5	RSL	LIGHTS	A	
L3	1	20	RCBO	2.5	RSL	LIGHTS	A	
L4	1	20	RCBO	2.5	RSL	LIGHTS	A	
L5	1	20	RCBO PE CELL ON DUSK OFF DAWN	2.5	EXTERNAL	SECURITY LIGHTS	A	
L6	1	20	RCBO PE CELL ON DUSK OFF TC	2.5	EXTERNAL	LIGHTS	A	
L7	1	20	RCBO PE CELL ON DUSK OFF TC	2.5	EXTERNAL	SIGNS	A	

LEGEND

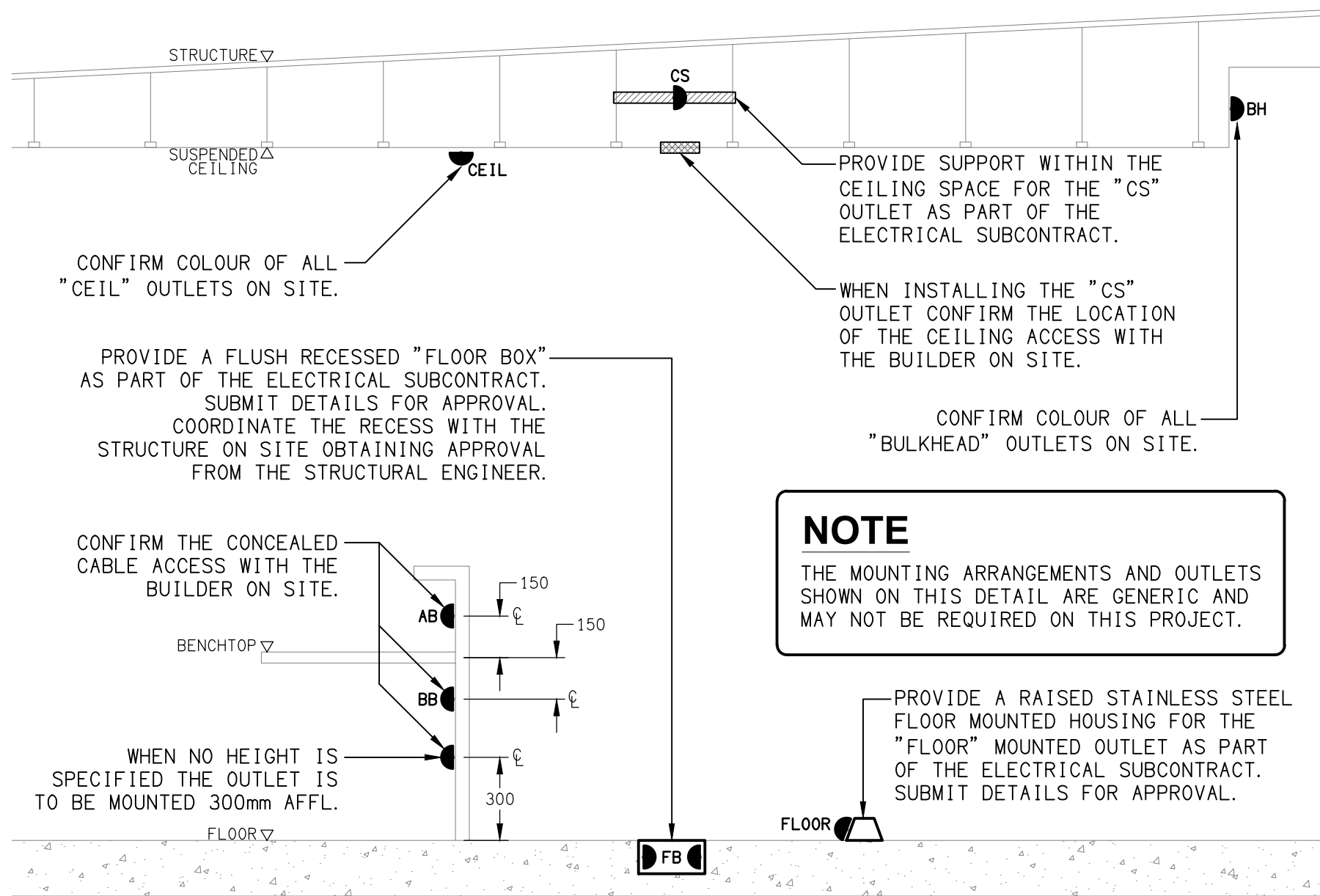
	ELECTRICAL SERVICES SWITCHBOARD.
	SWITCHBOARD / CONTROL PANEL NOT PROVIDED AS PART OF THE ELECTRICAL SUBCONTRACT.
	SINGLE POWER OUTLET.
	DOUBLE POWER OUTLET.
	SPECIAL PURPOSE POWER OUTLET.
	SINGLE PHASE ISOLATOR.
	THREE PHASE ISOLATOR.
	SIGNAGE OUTLET / CONNECTION.
	JUNCTION BOX.
	CONDUIT ROUTE.
	ELECTRICAL PIT, TYPE AS NOTED.
	LIGHTING CONTROL SWITCH PANEL, TYPE AS NOTED.
	ONE-WAY LIGHT SWITCH.
	TWO-WAY LIGHT SWITCH.
	DALI POT DIMMER SWITCH.
	CIRCUIT LINE.
	SWITCH LINE.
	POWER CIRCUIT DESIGNATION. DENOTES DB AND CIRCUIT.
	LIGHTING CONTROL CHANNEL REFERENCE.
	ELECTRICAL EQUIPMENT AS NOTED.
	MATV BELLING-LEA OUTLET.
	RJ45 COMMUNICATIONS OUTLET TO CR-B.
	SECURITY KEY PANEL.
	SECURITY DIRECTIONAL MOTION DETECTOR.
	SECURITY SIREN STROBE.
	SECURITY PIEZO SIREN.
	PA MULTI-TAP CONE SPEAKER.
	FUSE.
	SINGLE PHASE.
	THREE PHASE.
	CURRENT TRANSFORMER C/W REMOVABLE LINK.
	FUSE LINK.
	CIRCUIT BREAKER.
	ISOLATOR.
	QECM V4 CT METER.
	QECM V4 WHOLE CURRENT METER.
	MANUAL DALI POT DIMMER / SWITCH.
	MANUAL TRAILING EDGE POT DIMMER.

LEGEND

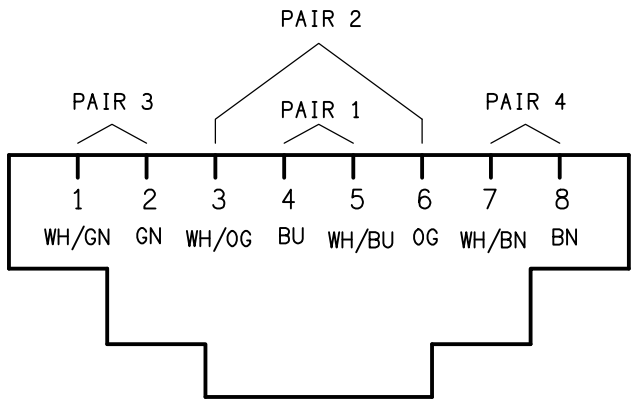
	REFER TO DETAIL NOTED FOR THE AREA SHOWN HATCHED. ADDITIONAL OUTLETS & FITTINGS MAY BE SHOWN ON DETAIL.
	E1: GENERAL LED EMERGENCY LIGHT.
	E2: EXISTING EMERGENCY LIGHT TO BE REMOVED.
	EX: EMERGENCY LED EXIT LIGHT.
	FE: EXISTING CEILING FAN.
	WL01: WALL LIGHT.
	RD01: TE DIMMABLE RECESSED DOWNLIGHT.
	RD02: EXTERNAL RECESSED DOWNLIGHT.
	RD03: RECESSED DOWNLIGHT TO MATCH THE EXISTING ADJACENT RDE FITTING.
	RD04: DALI DIMMABLE RECESSED DOWNLIGHT.
	RDE: EXISTING RECESSED DOWNLIGHT.
	SLE: EXISTING SURFACE MOUNTED FITTING.
	SL01: EXISTING SURFACE MOUNTED FITTING.
	SL03: SURFACE MOUNTED CAN LIGHT.
	CR01: EXISTING COOL ROOM LIGHT FITTING.
	PD10: POOL TABLE LIGHT.
	RT01: EXISTING SURFACE MOUNTED FITTING TO BE REPLACED WITH A 1200 x 300 RECESSED FITTING.
	RT02: NEW 1200 x 300 RECESSED FITTING.
	RT03: NEW 600 x 300 RECESSED FITTING.

NOTE

ALL ELECTRICAL PENETRATIONS THROUGH THE ROOF SHEETING ARE TO BE IN LINE WITH THE STRUCTURAL OR MECHANICAL SERVICES PENETRATIONS TO AVOID DEDICATED FLASHINGS FOR THE ELECTRICAL SERVICES.



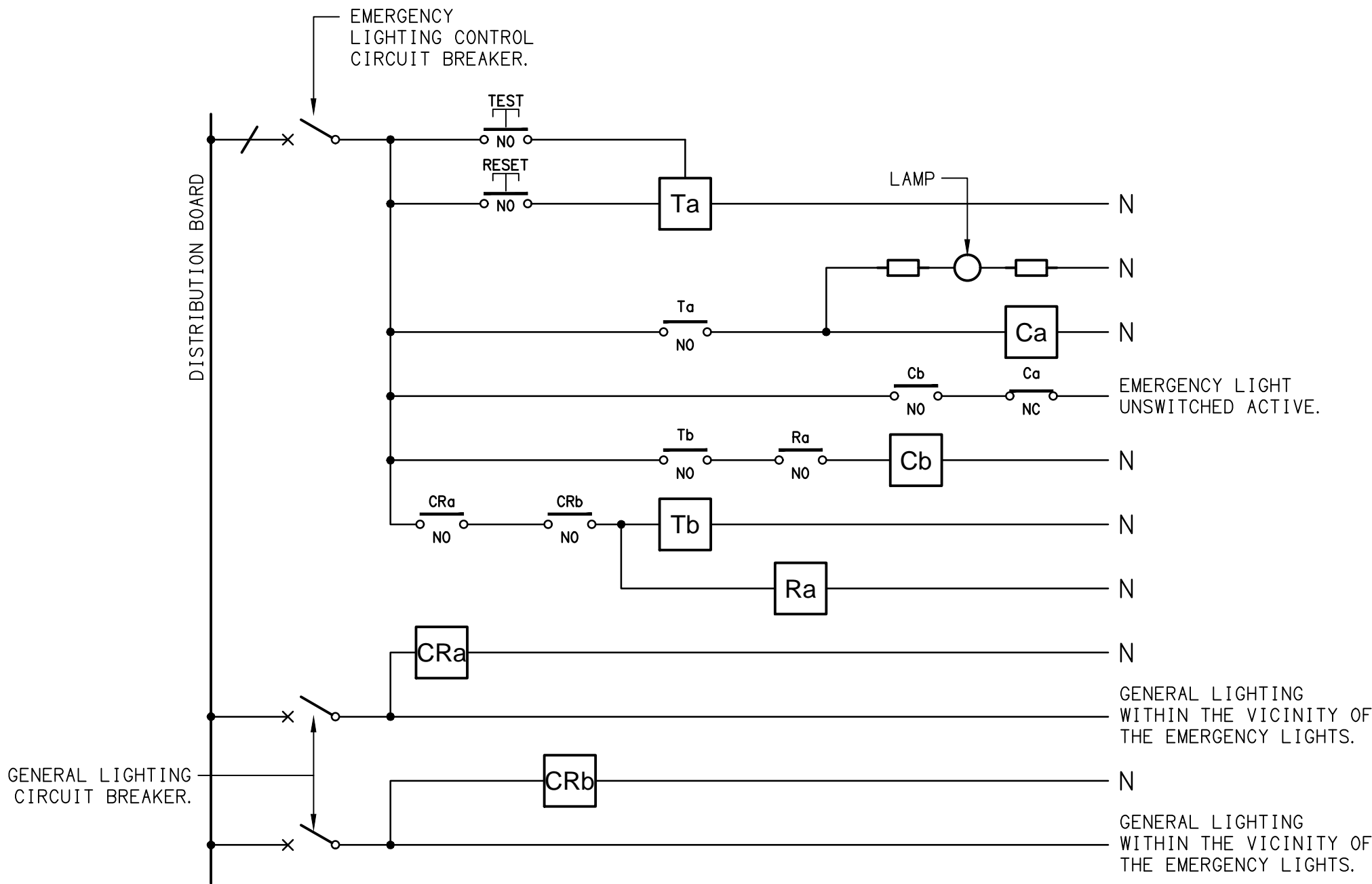
DETAIL  
TYPICAL OUTLET MOUNTINGS  
NOT TO SCALE



SCHEMATIC  
RJ45 PINOUT CONFIGURATION  
NOT TO SCALE

EQUIPMENT:

- TEST - TEST PUSH BUTTON MOUNTED ON THE DISTRIBUTION BOARD ESCUTCHEON.  
RESET - RESET PUSH BUTTON MOUNTED ON THE DISTRIBUTION BOARD ESCUTCHEON.  
LAMP - AMBER TEST INDICATING LAMP MOUNTED ON THE DISTRIBUTION BOARD ESCUTCHEON.  
Ta - ADJUSTABLE 0-3 HOUR TIMED RELAY.  
Tb - 15 MINUTE RUN-ON TIMER TO OPERATE UPON THE RETURN OF MAINS POWER.  
Cx - CONTACTOR x.  
CRx - CONTROL RELAY x.  
Rx - RELAY x.



SCHEMATIC  
EMERGENCY LIGHTING  
NOT TO SCALE

NOTES

1. THE EMERGENCY LIGHT UNSWITCHED ACTIVE / GENERAL LIGHTING SWITCHED ACTIVE CIRCUIT ARRANGEMENT AND CONTROL IS TYPICAL FOR ALL CIRCUITS SUPPLYING EMERGENCY LIGHTS.  
2. PROVIDE ADDITIONAL CONTROL RELAYS (CRx) CONFIGURED AS PER CRa AND CRb FOR ALL ADDITIONAL LIGHTING CIRCUITS THAT SUPPLY LIGHTS IN THE VICINITY OF THE EMERGENCY LIGHTS.



NOTES

1. EXTENT OF WORKS

THE ELECTRICAL SERVICES SUB-CONTRACT INCLUDES BUT IS NOT LIMITED TO THE FOLLOWING:

- SUPPLY AND INSTALLATION OF ALL COMPONENTS FORMING PART OF THE ELECTRICAL SERVICES.
- CO-ORDINATION.
- INSPECTIONS.
- TESTING AND COMMISSIONING.
- MAINTENANCE.
- AS BUILT DRAWINGS.
- OPERATION AND MAINTENANCE MANUAL.
- CABLING, CABLE SUPPORT SYSTEMS AND ACCESS.
- POWER DISTRIBUTION.
- LIGHTING.
- COMMUNICATIONS CABLING.
- SECURITY.
- PA / BACKGROUND MUSIC.
- ALL MINOR COMPONENTS AND INCIDENTAL WORKS NOT SPECIFICALLY REFERRED TO, HOWEVER NECESSARY TO COMPLETE THE ELECTRICAL SERVICES INSTALLATION SUCH THAT IT IS HANDED OVER COMPLETE, OPERATIONAL AND FIT FOR THE INTENDED USE.

ALL OF THE EXISTING ELECTRICAL SERVICES ARE TO BE REMOVED INCLUDING ANY EXISTING ELECTRICAL SERVICES WITHIN THE AREA OF THE EXISTING SITE THAT IS TO BE RESUMED INTO THE ROAD RESERVE.

SUPPLY ALL LABOUR, MATERIALS, EQUIPMENT, AND ALL OTHER ITEMS, WHETHER MENTIONED IN DETAIL OR NOT, REQUIRED FOR THE SATISFACTORY COMPLETION OF THE ELECTRICAL SERVICES INSTALLATION, LEAVING IN FULL WORKING ORDER TO THE SATISFACTION OF THE PROJECT MANAGER.

SUPPLY ALL LABOUR, MATERIALS, EQUIPMENT, AND ALL OTHER ITEMS, WHETHER MENTIONED IN DETAIL OR NOT, REQUIRED FOR THE SATISFACTORY COMPLETION OF THE ELECTRICAL SERVICES INSTALLATION, LEAVING IN FULL WORKING ORDER TO THE SATISFACTION OF THE PROJECT MANAGER.

ACCEPT FULL RESPONSIBILITY FOR LIASING, ARRANGING AND CO-ORDINATION OF ALL WORKS THAT HAVE AN EFFECT ON OR WILL BE AFFECTED BY THE ELECTRICAL SERVICES.

2. WORKMANSHIP

ENSURE THAT THE ELECTRICAL WORK IS PERFORMED BY THE HOLDER OF A CURRENT ELECTRICAL SUB CONTRACTOR LICENSE AND THE SERVICES COVERED BY THE ACMA IS PERFORMED BY THE HOLDER OF THE APPROPRIATE CURRENT ACMA LICENSE. ENSURE THE INSTALLATION AND ALL COMPONENTS, FIXTURES, FITTINGS, OUTLETS AND CABLES ARE SUPPLIED AND INSTALLED TO A HIGH STANDARD THROUGHOUT, AND INSTALLED IN A NEAT AND TRADESMAN LIKE MANNER, TO THE CURRENT INDUSTRY STANDARDS. ENSURE ALL MATERIALS AND COMPONENTS OF A SIMILAR TYPE ARE OF THE SAME MANUFACTURER AND INSTALLED IN A UNIFORM MANNER.

IT IS THE ELECTRICAL SUB CONTRACTOR’S RESPONSIBILITY TO ENSURE THAT THE INSTALLATION IS FIT FOR PURPOSE AND IS PROVIDED AS A COMPLETE WORKING INSTALLATION. IT IS THE ELECTRICAL SUB CONTRACTOR’S RESPONSIBILITY TO PROVIDE ALL COMPONENTS, FITTINGS, FIXTURES, SYSTEMS, PROGRAMMING ETC IRRESPECTIVE OF THE LEVEL DETAILED IN THE DOCUMENTS SUCH THAT THE INSTALLATION IS PROVIDED AS A COMPLETE WORKING INSTALLATION.

CONCEAL ALL WIRING AND CONDUITS. EXPOSED CABLING OR CONDUITS ARE GENERALLY NOT ACCEPTABLE. IT IS NOTED THAT CHASING AND REINSTATEMENT WILL BE REQUIRED. ENSURE ALL COMPONENTS, EQUIPMENT AND MATERIALS SUPPLIED ARE NEW, UNUSED, DESIGNED AND SELECTED TO ENSURE SATISFACTORY OPERATION UNDER VARYING ATMOSPHERIC, CLIMATIC, HUMID TROPICAL CONDITIONS WITHOUT DISTORTION AND DETERIORATION IN ANY PART AFFECTING EFFICIENCY AND RELIABILITY OF THE SYSTEMS. DESIGN AND SELECT ALL EQUIPMENT TO PROVIDE THE NECESSARY SAFETY TO HUMAN LIFE AND PROPERTY DURING OPERATION AND MAINTENANCE WITH PARTICULAR ATTENTION GIVEN TO ELECTRICAL SAFETY AND SEGREGATION PRECAUTIONS.

CHECK THE FINISHED PAINTWORK AROUND THE AREA OF EACH INSTALLATION AND TOUCH UP ALL DAMAGED PARTS AND FINISHES AFTER THE INSTALLATION OF THE ELECTRICAL SERVICES.

ALL WORKS ARE TO BE CARRIED OUT IN ACCORDANCE WITH THE BUILDER’S PROGRAM. ENSURE ALL FINAL LOCATIONS OF OUTLETS AND FITTINGS ARE CO-ORDINATED ONSITE WITH THE ARCHITECT AND ALL OTHER SERVICES, TO THE APPROVAL OF THE PROJECT MANAGER. ALLOW TO CO-ORDINATE THE FINAL LOCATION OF ALL EQUIPMENT, FITTINGS, & OUTLETS, SUCH THAT THEY ARE INSTALLED IN ACCORDANCE WITH THE AS3000 RESTRICTED ZONES, AND ARE NOT COVERED INAPPROPRIATELY.

ENSURE THAT ALL METAL SURFACES ARE SUITABLY PROTECTED AGAINST CORROSION, AND THAT ALL PLASTIC MATERIALS ARE UV STABILISED.

PROVIDE ALL MATERIALS AS NEW, AND OF THE HIGHEST CLASS AVAILABLE FOR THEIR RESPECTIVE TYPES. ENSURE ALL ASPECTS OF THE WORK ARE OF A HIGH STANDARD THROUGHOUT, AND INSTALLED IN A NEAT AND TRADESMAN LIKE MANNER, TO THE CURRENT INDUSTRY STANDARDS.

IRRESPECTIVE OF INFORMATION CONTAINED IN THE ELECTRICAL SERVICES DOCUMENTS OR IN INSTRUCTIONS, IT IS THE ELECTRICAL SUB CONTRACTOR’S RESPONSIBILITY TO ENSURE ALL ELECTRICAL SERVICES WORKS ARE INSTALLED IN ACCORDANCE WITH THE REQUIREMENTS OF THE FOLLOWING. REFER ANY DISCREPANCIES BETWEEN THE REQUIREMENTS OF THE FOLLOWING AND/OR THE ELECTRICAL SERVICES DOCUMENTS AND INSTRUCTIONS TO THE ARCHITECT FOR CLARIFICATION PRIOR TO THE PLACING OF ORDERS, FABRICATION OR INSTALLATION OF THE ITEMS/METHODS IN DISCREPANCY.

- NCC BUILDING CODE OF AUSTRALIA.
- ELECTRICITY ACT.
- ELECTRICAL SAFETY ACT.
- AS/NZS3000.
- AS3008.
- LOCAL BRIGADE.
- WORKPLACE HEALTH AND SAFETY ACT.
- TELECOMMUNICATIONS ACT.
- ACMA REQUIREMENTS.

3. AUTHORITIES

ENSURE ALL OF THE ELECTRICAL SERVICES COMPLY WITH THE REQUIREMENTS OF ALL REGULATORY AUTHORITIES HAVING JURISDICTION OVER THE SITE INCLUDING BUT NOT LIMITED TO THE FOLLOWING:

- ACMA.
- LOCAL COUNCIL.
- ENERGEX.
- STATE GOVERNMENT DEPARTMENT OF ENVIRONMENT AND HERITAGE.
- QLD GOVERNMENT, DIVISION OF WORKPLACE, HEALTH AND SAFETY.
- QLD FIRE AND EMERGENCY SERVICES.

4. CABLES

UNLESS OTHERWISE SPECIFIED, INSTALL AND TERMINATE CABLES IN ACCORDANCE WITH THE MANUFACTURERS’ RECOMMENDATIONS. DETERMINE THE FINAL ROUTES TO SUIT THE BUILDING STRUCTURE AND SITE CONDITIONS. UNLESS NOTED OTHERWISE, PROVIDE ALL 240 VOLT POWER AND LIGHTING WIRING AS 2.5mm² TWIN & EARTH STRANDED COPPER CONDUCTORS, PVC INSULATED 0.6/1kV V75 GRADE TO AS3174, PROTECTED BY A 20 AMP CIRCUIT BREAKER. ALL CONDUIT AND FITTINGS TO BE RIGID UPVC TO AS2053, UNLESS NOTED OTHERWISE.

NOTES

5. POWER DISTRIBUTION

PROVIDE A NEW ENERGEX COMPLIANT STEEL PROPERTY POLE WITH NEW UNDERGROUND CONSUMERS MAINS FROM THE PROPERTY POLE TO THE MAIN SWITCHBOARD. ARRANGE FOR THE NEW 200 AMP ENERGEX OVERHEAD SERVICE TO BE CONNECTED TO THE NEW PROPERTY POLE. THE EXISTING ENERGEX SERVICE AND PROPERTY POLE IS TO BE REMOVED.

PROVIDE THE MAIN SWITCHBOARD (MSB) AS FOLLOWS:

- PLINTH MOUNTED FIXED TO THE EXTERNAL WALL.
- NATIONAL ELECTRICITY MARKET (NEM) COMPLIANT RETAIL METERING.
- PROVIDE A COPY OF THE ENERGEX APPROVAL OF THE MSB.
- IP66 FORM 2A.
- DESIGNED TO OPERATE IN DIRECT WESTERN SUN IN AN AMBIENT TEMPERATURE OF 40 DEGREES.
- LIGHT GREY POWDER COATED ENCLOSURE AND DOORS.
- POWDER COATED GLOSS WHITE ESCUTCHEONS.
- LIFT OFF HINGES ON ALL DOORS AND ESCUTCHEONS.
- 1/4 TURN LATCHES AND D HANDLES ON ALL ESCUTCHEONS.
- PROVIDE SHOP DRAWINGS FOR APPROVAL.
- ALL COMPONENTS ARE TO BE LABELLED WITH NON-STICK LABELS.

PROVIDE DISTRIBUTION BOARD DB-B AS FOLLOWS:

- WALL MOUNTED.
- IP44 FORM 1.
- LIGHT GREY ENCLOSURE WHITE ESCUTCHEON.
- 3 POINT 92268 KEY LOCKABLE FLUSH HANDLES ON ALL DOORS.
- LIFT OFF HINGES ON ALL DOORS AND ESCUTCHEONS.
- 1/4 TURN LATCHES AND D HANDLES ON ALL ESCUTCHEONS.
- PROVIDE SHOP DRAWINGS FOR APPROVAL.
- 25% SPARE POLES AT PRACTICAL COMPLETION.
- ALL COMPONENTS ARE TO BE LABELLED WITH NON-STICK LABELS.

ENSURE ALL THREE PHASE CIRCUITS ARE PROVIDED WITH CORRECT PHASE ROTATION.

ENSURE ALL OUTLETS AND ISOLATORS ARE POSITIONED SUCH THAT THEY ARE NOT COVERED BY THE EQUIPMENT.

THE POWER DISTRIBUTION COMPONENT OF THIS CONTRACT INCLUDES, BUT IS NOT LIMITED TO THE FOLLOWING EXTENT OF WORK:

- POWER DISTRIBUTION.
  - RETAIL METERING.
  - PROPERTY POLE.
  - CONSUMERS MAINS.
  - MAIN SWITCHBOARD.
  - SUBMAINS.
  - DISTRIBUTION BOARD DB-B.
  - CABLE ACCESS WAYS.
  - CIRCUITS.
  - ISOLATORS AND OUTLETS.
  - TESTING AND COMMISSIONING.
  - THERMOSCAN THE MSB AND THE DISTRIBUTION BOARDS ONE WEEK AFTER PRACTICAL COMPLETION.
- PROVIDE A CHART RECORDING OF THE MAINS CURRENT, VOLTAGE, FREQUENCY FOR THE FIRST 14 DAYS FOLLOWING PRACTICAL COMPLETION AND SUBMIT THE THERMOSCAN CHART RECORDING AND FOR APPROVAL.

REMOVE THE EXISTING MSB AND ALL OTHER ELECTRICAL SERVICES MADE REDUNDANT BY THE WORKS.

6. LIGHTING

THE LIGHTING COMPONENT OF THE ELECTRICAL SERVICES SUB-CONTRACT INCLUDES ALL OF THE INTERNAL AND EXTERNAL LIGHT FITTINGS, LAMPS AND ACCESSORIES. PROVIDE ALL NECESSARY ACCESSORIES TO FACILITATE THE COMPLETE LIGHTING INSTALLATION. THE LIGHTING COMPONENT OF THE ELECTRICAL SERVICES SUB-CONTRACT INCLUDES THOUGH IT IS NOT LIMITED TO THE FOLLOWING EXTENT OF WORK:

- INTERNAL LIGHTING.
- EMERGENCY AND EXIT LIGHTING.
- EARTHING OF THE LIGHTING INSTALLATION.
- LIGHTING CONTROL.
- LIGHTING SUBCIRCUITS.
- TESTING AND COMMISSIONING.
- ALL EXISTING LIGHTING THAT REMAINS IS TO BE RECONNECTED.

PROVIDE A SINGLE POINT EMERGENCY LIGHTING SYSTEM THAT COMPLIES WITH THE LATEST ISSUE OF ALL PARTS AS2293 AND THE RELEVANT PARTS OF THE NCC BCA. INSTALL EMERGENCY LIGHT FITTINGS NOMINATED AS MAINTAINED WITH THE LAMP PERMANENTLY ON SUPPLIED VIA AN UNSWITCHED ACTIVE MAINS SUPPLY WHEN THE MAINS SUPPLY IS AVAILABLE. WHEN THE MAINS SUPPLY IS NOT AVAILABLE, THE LAMP IS TO REMAIN ON SUPPLIED BY THE EMERGENCY PACK. SINGLE LAMP MAINTAINED EMERGENCY LIGHTS ARE NOT SWITCHED WITH THE LOCAL GENERAL AREA LIGHTING. (THE LAMP IS ALWAYS ON.)

INSTALL EMERGENCY LIGHT FITTINGS NOMINATED AS NON-MAINTAINED AS FOLLOWS:

- IF THE FITTING IS NOT BEING SWITCHED, THE LAMP IS TO REMAIN OFF WHEN THE MAINS SUPPLY IS AVAILABLE. WHEN THE MAINS SUPPLY IS NOT AVAILABLE THE LAMP IS TO BE SWITCHED ON SUPPLIED BY THE EMERGENCY PACK. UNSWITCHED SINGLE LAMP NON-MAINTAINED EMERGENCY LIGHTS ARE NOT SWITCHED WITH THE LOCAL GENERAL AREA LIGHTING. (THE LAMP IS ON ONLY WHEN THE MAINS SUPPLY IS NOT AVAILABLE.)
- IF THE FITTING IS BEING SWITCHED, THE LAMP IS TO BE SUPPLIED AND CONTROLLED WITH THE LOCAL GENERAL AREA LIGHTING WHEN THE MAINS SUPPLY IS AVAILABLE. WHEN THE MAINS SUPPLY IS NOT AVAILABLE THE LAMP IS TO BE SWITCHED ON, SUPPLIED BY THE EMERGENCY PACK. (THE LAMP IS ON WHEN TURNED ON WITH THE LOCAL GENERAL LIGHTING OR THE MAIN SUPPLY IS NOT AVAILABLE.)

7. TELECOMMUNICATIONS SERVICE

THE COMMUNICATIONS CABLING COMPONENT OF THIS CONTRACT INCLUDES THE PROVISION OF A NEW RACK MOUNTED NBN NTD IN CR-B CONNECTED TO THE EXISTING NBN PCD VIA A NBN COMPLIMENT CONCEALED CONDUIT. ARRANGE FOR THE NBN SERVICES TO BE INSTALLED INCLUDING ALL CABLE ACCESS WAYS AND DOCUMENTATION IN ACCORDANCE WITH THE NBN REQUIREMENTS. PROVIDE A WALL MOUNTED COMMUNICATIONS RACK CR-B. PROVIDE THE COMMUNICATIONS CABLING COMPONENT OF THIS CONTRACT AS A COMMSCOPE OR MOLEX CAT 6 INSTALLATION WITH A 15 YEAR MANUFACTURERS PERFORMANCE WARRANTY. THE RSL COMMUNICATIONS OUTLETS ARE TO BE RUN TOP PATCH PANELS WITHIN CR-B.

THE COMMUNICATIONS CABLING COMPONENT OF THIS CONTRACT INCLUDES, BUT IS NOT LIMITED TO THE FOLLOWING EXTENT OF WORK:

- NBN CABLE ACCESS WAYS INCLUDING THE RACK MOUNTED NTD IN CR-B.
- COMMUNICATIONS RACK.
- CAT 6 COMMUNICATIONS OUTLETS AND CABLING.
- CAT 6 GAMING OUTLETS AND CABLING.
- CAT 6 PATCH PANELS.
- CABLE ACCESS WAYS.
- TESTING AND COMMISSIONING.

ALL ACTIVE EQUIPMENT, FLY LEADS AND PATCH LEADS WILL BE PROVIDED BY THE OPERATOR.

NOTES

8. SECURITY

THE SECURITY COMPONENT OF THIS CONTRACT INCLUDES THE PROVISION OF A NEW REMOTELY MONITORED INNER RANGE INTEGRITY INTRUDER DETECTION SYSTEM WITHIN THE RSL. THE BOWLS CLUB SECURITY SYSTEM IS TO BE RETAINED AS IS.

CONFIGURE THE SECURITY SYSTEM TO OPERATE AS DIRECTED BY THE OPERATOR.

THE SECURITY COMPONENT OF THIS CONTRACT INCLUDES, BUT IS NOT LIMITED TO THE FOLLOWING EXTENT OF WORK:

- CONTROLLERS, EXPANSION PANELS, HOUSINGS AND POWER SUPPLIES.
- REMOTE MONITORING VIA A CABLED INTERNET CONNECTION AND A CELLULAR CONNECTION.
- INTRUDER DETECTORS.
- ARMING / DISARMING KEY PAD.
- PIEZO SIREN.
- SATELLITE STROBE SIREN.
- CABLE ACCESS WAYS.
- TESTING AND COMMISSIONING.

THE BOWLS CLUB EXISTING CCTV SYSTEM IS TO BE RETAINED.

9. PA BACKGROUND MUSIC.

THE BACKGROUND MUSIC COMPONENT OF THIS CONTRACT INCLUDES THE PROVISION OF SPEAKERS AND AUDIO INPUTS WITHIN THE RSL ACTIVITY ROOM CONNECTED TO A 120W 4 INPUT MIXER AMPLIFIER RACK MOUNTED WITHIN CR-B. PROVIDE TWO WALL MOUNTED AUDIO INPUTS WITHIN THE RSL ACTIVITY ROOM WITH THE POSITION CONFIRMED ON SITE BY THE OPERATOR.

THE BACKGROUND MUSIC COMPONENT OF THIS CONTRACT INCLUDES, BUT IS NOT LIMITED TO THE FOLLOWING EXTENT OF WORK:

- SPEAKERS.
- AUDIO INPUTS.
- SPEAKER CABLING.
- AUDIO INPUT CABLING.
- MIXER AMPLIFIER.
- CABLE ACCESS WAYS.
- TESTING AND COMMISSIONING.

THE EXISTING BOWLS CLUB PA / BACKGROUND MUSIC SYSTEM IS TO BE RETAINED.

11. ABBREVIATIONS

- A - AMP CURRENT RATING
- AB - MOUNT ABOVE BENCH.
- AFFL - ABOVE FINISHED FLOOR LEVEL.
- BB - MOUNT BELOW BENCH.
- BH - MOUNT ON BULKHEAD.
- CEIL - MOUNT ON CEILING.
- CS - MOUNT WITHIN CEILING SPACE.
- C/W - COMPLETE WITH.
- DW - DISHWASHER.
- HWS - HOT WATER SYSTEM.
- MCB - MINIATURE CIRCUIT BREAKER.
- MEN - MULTIPLE EARTH NEUTRAL LINK.
- MSB - MAIN SWITCHBOARD.
- N - NEON / LED INDICATOR WHEN ON.
- NTS - NOT TO SCALE.
- RCBO - CIRCUIT PROTECTED VIA A 30mA RESIDUAL CURRENT DEVICE INTEGRAL TO THE CIRCUIT BREAKER.
- REF - REFRIGERATOR.
- UNO - UNLESS NOTED OTHERWISE.
- WP - WEATHERPROOF TO IP56 UNO.
- 500 - NUMBER DENOTES MOUNTING HEIGHT AFFL.

			B TENDER		23/04/2026
			REV: DESCRIPTION:		DATE:
ELECTRICAL DESIGN GROUP BRISBANE PTY LTD ACN 092 710 793			DRAWING: <b>ELECTRICAL SERVICES NOTES</b>		
TRADING AS: ELECTRICAL DESIGN GROUP			SCALE: NOT TO SCALE AT A1	PROJECT NO: <b>C3702a</b>	DRAWING NO: <b>E02</b>
			REVISION: <b>B</b>		

ELECTRICAL DESIGN GROUP

ELECTRICAL

BUILDING

SERVICES

CONSULTANTS

BRISBANE

GOLD COAST

P.O.Box 15, Sherwood Q.4075

Phone: (07) 3278 4375

Email: brisbane@edg.net.au

Web: www.edg.net.au

PROJECT:

KALLANGUR MEMORIAL BOWLS CLUB

1351 ANZAC AVENUE, KALLANGUR, QUEENSLAND

ANZAC AVE

SITE BOUNDARY

NEW GALVANISED  
PROPERTY POLE

POWER PIT 1

**NOTE:**

THE EXISTING CAR PARK AND LANDSCAPE  
LIGHTING TO BE RETAINED AS IS.

EXISTING CARPARK

65 CAR PARKS INCL. 3 DISABLED  
CAR PARKS

POWER PIT 2

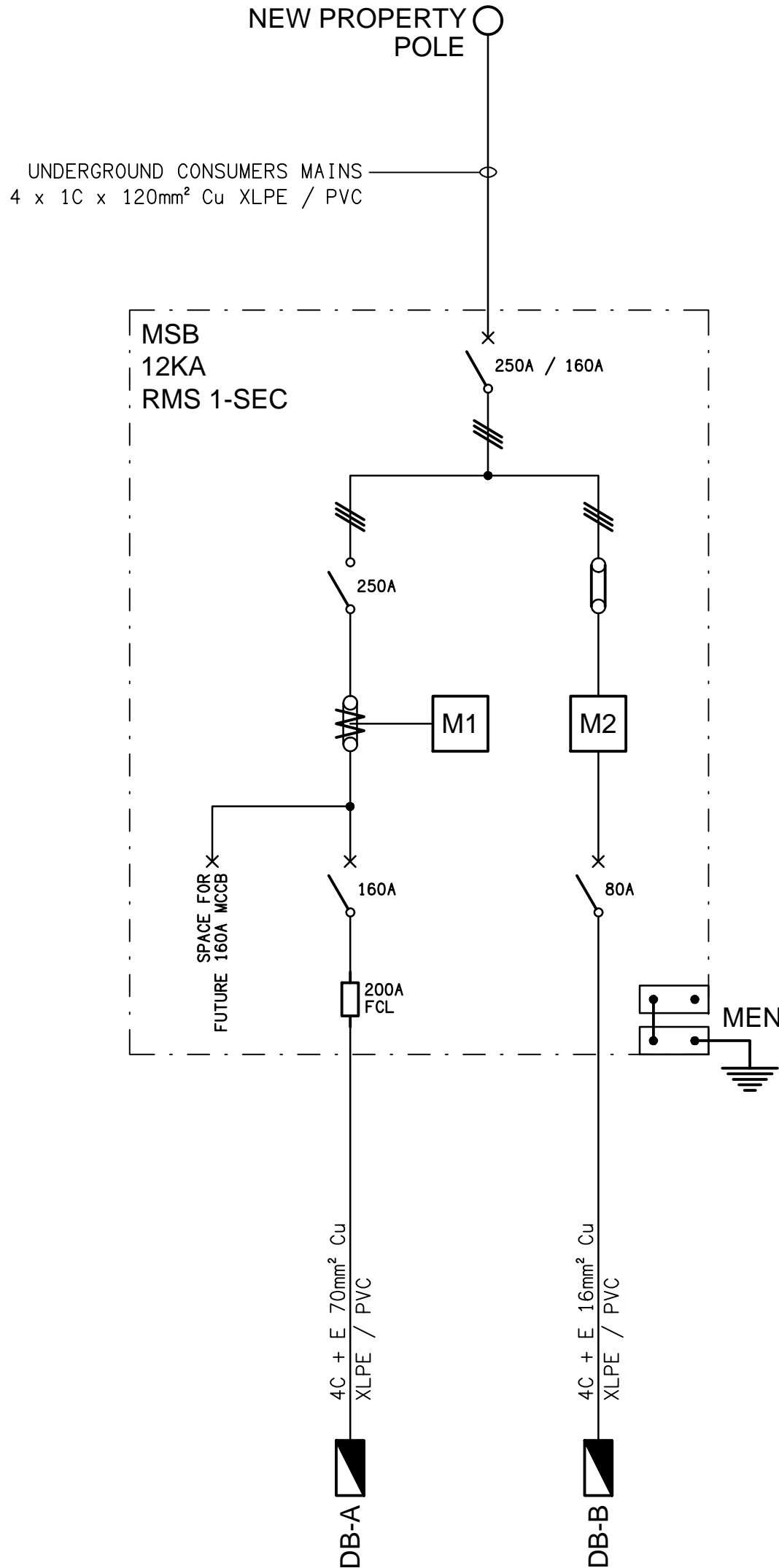
MSB

PROVIDE 2No. VEHICLE IMPACT  
PROTECTION BOLLARDS 1200 MIN.  
IN FRONT OF THE MSB

PROPOSED BOWLS  
CLUB & RSL

DN

PROPOSED UNDER-COVER BOWLING GREEN



**SCHEMATIC**  
POWER CONFIGURATION  
NOT TO SCALE

ELECTRICAL DESIGN GROUP BRISBANE  
PTY LTD  
ACN 092 710 793  
TRADING AS:  
ELECTRICAL DESIGN GROUP

THE COPYRIGHT OF THIS DRAWING  
REMAINS THE PROPERTY OF THE  
ELECTRICAL DESIGN GROUP.  
USE FIGURED DIMENSIONS  
IN PREFERENCE TO SCALE.  
ALL DIMENSIONS TO BE  
VERIFIED ONSITE.

**ELECTRICAL DESIGN GROUP**  
ELECTRICAL BUILDING SERVICES CONSULTANTS  
BRISBANE GOLD COAST

P.O.Box 15, Sherwood Q.4075  
Phone: (07) 3278 4375  
Email: brisbane@edg.net.au  
Web: www.edg.net.au

PROJECT:  
KALLANGUR MEMORIAL BOWLS CLUB

1351 ANZAC AVENUE, KALLANGUR, QUEENSLAND

A	PRELIMINARY	15/04/2026
REV:	DESCRIPTION:	DATE:

DRAWING:  
**ELECTRICAL SERVICES**  
SITE PLAN & SCHEMATIC

SCALE:  
1:200

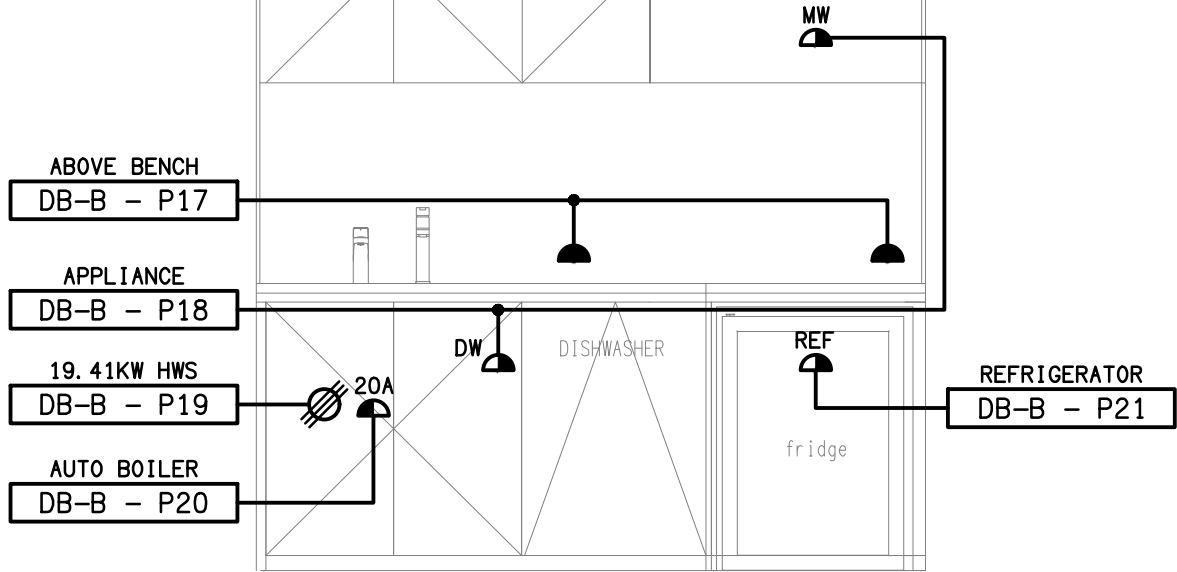
AT A1

PROJECT NO:  
**C3702a**

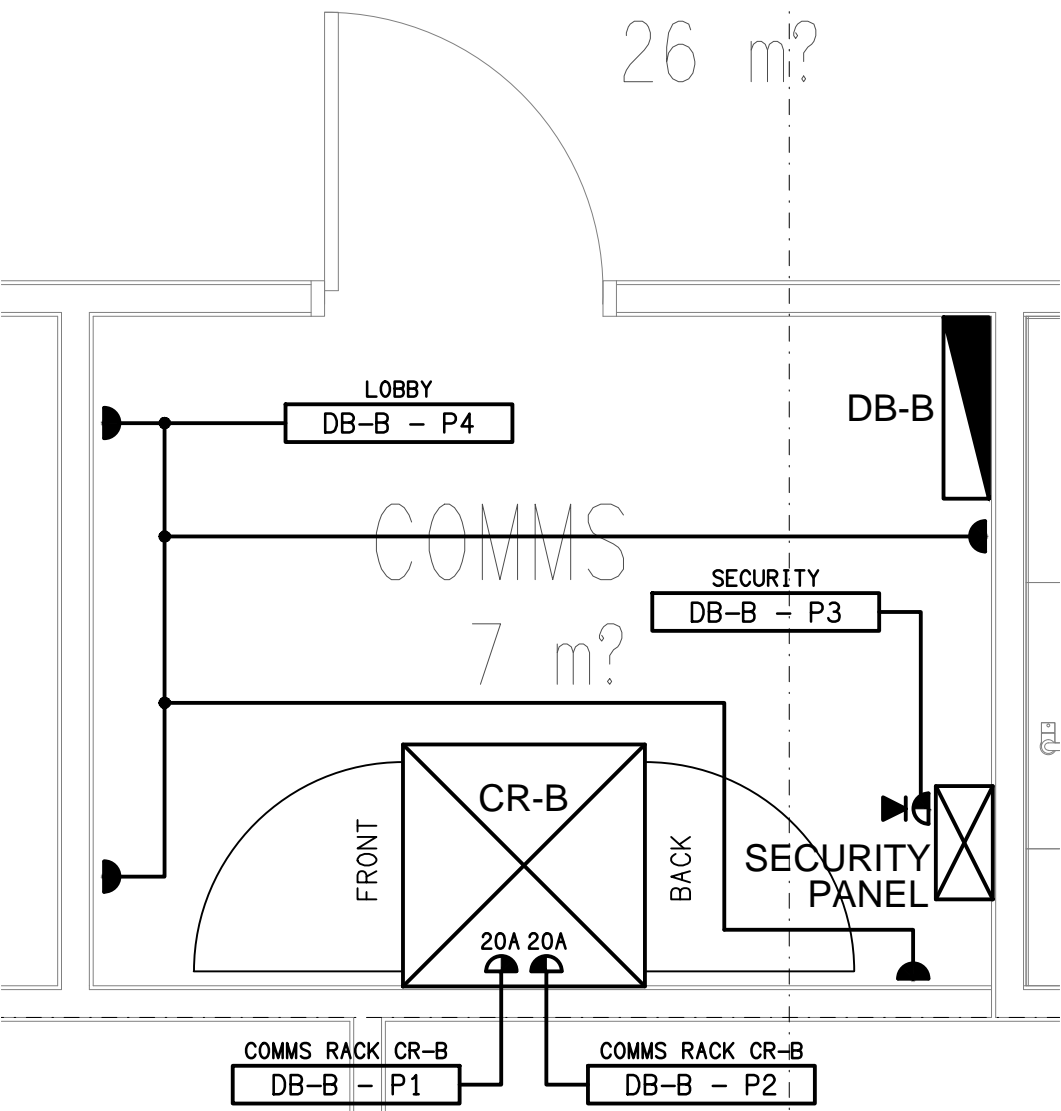
DRAWING NO:  
**E03**

REVISION:  
**A**

ELECTRICAL LAYOUT  
PENDING RECEIPT OF  
KITCHENETTE ELEVATION



DETAIL A  
STAFF KITCHENETTE ELEVATION  
SCALE 1:25



DETAIL B  
COMMUNICATIONS ROOM FLOOR PLAN  
SCALE 1:25

