



# ELECTRICAL DESIGN GROUP

ELECTRICAL BUILDING SERVICES CONSULTANTS

P.O. Box 15, SHERWOOD Q. 4075

Phone: (07) 3278 4375

Website: www.edg.net.au Email: brisbane@edg.net.au

C3751a - KINGS CHRISTIAN COLLEGE - PIMPAMA, MAINTENANCE SHED

C3751a-0001(B).xls

ELECTRICAL SERVICES CONTRACT DOCUMENT SCHEDULE

REVISION B - 22 MAY 2026

ISSUING INFORMATION				DATE OF ISSUE							
	DAY	28	22								
	MONTH	04	05								
	YEAR	26	26								
	REASON FOR ISSUE	T	C								
A = APPROVAL    C = CONSTRUCTION    N = COORDINATION    P = PRELIMINARY    T = TENDER											

DISTRIBUTION				NUMBER OF COPIES							
WWW.EDG.NET.AU				1E	1E						
KINGS CHRISTIAN COLLEGE				1E	1E						
DAVID HARNEY CONSTRUCTION					1E						
P = PRINT    T = TRACING    D = DISC    E = EMAIL    F = FAX											

DOCUMENTS				REVISION							
C3751a-E01.dwg	LEGEND & DETAILS			A	B						
C3751a-E02.dwg	NOTES			A	B						
C3751a-E03.dwg	SITE PLAN			A	B						
C3751a-E04.dwg	FLOOR AND REFLECTED CEILING PLANS			A	B						
C3751a-0001.xls	CONTRACT DOCUMENT SCHEDULE			A	B						
C3751a-0002.xls	EQUIPMENT SCHEDULE			A							
C3751a-0004.xls	DISTRIBUTION BOARD DB-M SCHEDULE			A							



# ELECTRICAL DESIGN GROUP

ELECTRICAL BUILDING SERVICES CONSULTANTS

P.O. Box 15, SHERWOOD Q. 4075

Phone: (07) 3278 4375

Website: [www.edg.net.au](http://www.edg.net.au) Email: [brisbane@edg.net.au](mailto:brisbane@edg.net.au)

C3751a - KINGS CHRISTIAN COLLEGE - PIMPAMA, MAINTENANCE SHED

C3751a-0002(A).xls

## ELECTRICAL EQUIPMENT SCHEDULE

REVISION A - 28/ APRIL 2026

THE EQUIPMENT SUPPLIER CONTACT DETAILS MAY BE AVAILABLE ON THE EDG WEBSITE VIA THE FOLLOWING LINK  
[www.edg.net.au/links.html](http://www.edg.net.au/links.html)

TYPE	LAMPS	DESCRIPTION	COLOUR / ACCESSORY	CATALOGUE No	REV
L1	36W LED 4000K	1200 LONG SURFACE MOUNTED IP65 DIFFUSED BATTEN C/W INTEGRAL ELECTRONIC CONTROL GEAR	LIGHT GREY	GAMMA ILLUMINATION STORM 1558-CCT-36W	A
L2	34W LED 4000K	300 X 1200 TABAR LAY IN TROFFER C/W REMOTE DRIVER.	WHITE	GAMMA ILLUMINATION 1549-4K-34W	A
L3	36W LED 4000K	1200 LONG SURFACE MOUNTED IP65 DIFFUSED BATTEN C/W INTEGRAL ELECTRONIC CONTROL GEAR AND SENSOR	LIGHT GREY	GAMMA ILLUMINATION STORM 1558-CCT-36W-MS	A
L4	120W 4000K LED	WALL MOUNTED ADJUSTABLE IP65 55 DEG FLOOD C/W INTEGRAL DRIVER	SILVER	GAMMA ILLUMINATION ALTUS 1346-4K	A
E1	LED	EMERGENCY LIGHT: RECESSED NON-MAINTAINED EMERGENCY LIGHT. AS2293 CLASSIFICATION C0-D40 - C90-D40.	WHITE	STANILITE SF1LEDP	A
EX	LED	EXIT LIGHT: MAINTAINED 24M VIEWING DISTANCE EXIT LIGHT C/W DIFFUSERS & DIRECTIONAL ARROWS AS SHOWN. CEILING OR WALL MOUNT BETWEEN 2100mm & 2700mm AFFL IF THERE IS NO VERTICAL SURFACE TO MOUNT THE FITTING ON WITHIN THIS RANGE CONFIRM THE MOUNTING HEIGHT WITH THE ENGINEER. AS2293 CLASSIFICATION C0-D8 - C90-E3.2.	WHITE	STANILITE PQFLEDP	A
EMERGENCY PACK		LIGHT FITTINGS THAT ARE DESIGNATED AS BEING PROVIDED WITH AN EMERGENCY PACK ARE TO BE PROVIDED WITH AN INTEGRAL AS2293 EMERGENCY PACK. THE FITTINGS ARE TO BE NON MAINTAINED WITH ALL LAMPS SWITCHED AS PER THE LIGHTING CONTROL FOR THAT SPACE UNLESS NOTED OTHERWISE. REFER TO THE NOTES FOR FURTHER DETAILS OF THE CONFIGURATION AND SWITCHING OF EMERGENCY LIGHTS.			A
ONE-WAY LIGHT SWITCH		ONE-WAY LIGHT SWITCH C/W CIRCUIT IDENTIFICATION ON THE FACEPLATE BEHIND THE SURROUND MOUNTED AT 1000mm AFFL UNLESS NOTED OTHERWISE.	WHITE	CLIPSAL C2000 SERIES 30USM	A
TWO-WAY LIGHT SWITCH		TWO-WAY LIGHT SWITCH C/W CIRCUIT IDENTIFICATION ON THE FACEPLATE BEHIND THE SURROUND MOUNTED AT 1000mm AFFL UNLESS NOTED OTHERWISE.	WHITE	CLIPSAL C2000 SERIES 30USM	A
SINGLE POWER OUTLET		SINGLE POWER OUTLET C/W CIRCUIT IDENTIFICATION ON THE FACEPLATE BEHIND THE SURROUND. MOUNT AT 300mm AFFL U.N.O. RATING 10A U.N.O.	WHITE	CLIPSAL C2000 SERIES	A
DOUBLE POWER OUTLET		DOUBLE POWER OUTLET C/W CIRCUIT IDENTIFICATION ON THE FACEPLATE BEHIND THE SURROUND. MOUNT AT 300mm AFFL U.N.O. RATING 10A U.N.O.	WHITE	CLIPSAL C2000 SERIES	A

C3751a-0002(A).xls

Pages inc. any attach. 1 of 3



# ELECTRICAL DESIGN GROUP

ELECTRICAL BUILDING SERVICES CONSULTANTS

P.O. Box 15, SHERWOOD Q. 4075

Phone: (07) 3278 4375

Website: [www.edg.net.au](http://www.edg.net.au) Email: [brisbane@edg.net.au](mailto:brisbane@edg.net.au)

C3751a - KINGS CHRISTIAN COLLEGE - PIMPAMA, MAINTENANCE SHED

C3751a-0002(A).xls

## ELECTRICAL EQUIPMENT SCHEDULE

REVISION A - 28/ APRIL 2026

THE EQUIPMENT SUPPLIER CONTACT DETAILS MAY BE AVAILABLE ON THE EDG WEBSITE VIA THE FOLLOWING LINK  
[www.edg.net.au/links.html](http://www.edg.net.au/links.html)

TYPE	LAMPS	DESCRIPTION	COLOUR / ACCESSORY	CATALOGUE No	REV
SPECIAL PURPOSE POWER OUTLET		SPECIAL PURPOSE POWER OUTLET. MOUNT AT 300mm AFFL U.N.O. RATING 10A U.N.O. SIZE AND TYPE AS NOTED	-	-	A
HAND DRYER CONNECTION (HD)		THE ELECTRICAL SUB CONTRACTOR IS TO TAKE POSSESSION OF THE HAND DRYER AND INSTALL IT WITH 20A ISOLATING SWITCH WALL MOUNTED CONNECTED TO THE HAND DRYER UNIT AS PER DETAIL. PROVIDE CIRCUIT IDENTIFICATION ON THE FACEPLATE BEHIND THE SURROUND	WHITE	CLIPSAL "C2000 SERIES"	A
SINGLE-PHASE ISOLATOR		SINGLE-PHASE WEATHERPROOF ISOLATOR. MOUNT AT 1350mm AFFL U.N.O. RATING 20A U.N.O. CONNECT TO EQUIPMENT VIA FLEXIBLE CONDUIT.	-	CLIPSAL WHT20	A
THREE-PHASE ISOLATOR		THREE-PHASE WEATHERPROOF ISOLATOR. MOUNT AT 1350mm AFFL U.N.O. RATING 20A U.N.O. CONNECT TO EQUIPMENT VIA FLEXIBLE CONDUIT. "RSD" DENOTES ROLLER SHUTTER DOOR SUPPLY - COORDINATE LOCATION ONSITE WITH MOTOR.	-	CLIPSAL WHT35	A
MSB		EXISTING MAIN SWITCHBOARD TO REMAIN AS IS			A
DB-23		EXISTING DISTRIBUTION BOARD DB-23 TO BE PROVIDED WITH A THREE PHASE 63 AMP MCB TO SUPPLY THE NEW DB-M VIA A NEW 4C+E 35MM UNDERGROUND SUBMAIN. UPDATE THE CIRCUIT SCHEDULE.			A
DB-M		DISTRIBUTION BOARD DB-M. PROVIDE A NEW DISTRIBUTION BOARD DB-M AS PER THE DB-M SCHEDULE AND NOTES.			A
SECURITY EQUIPMENT		SECURITY EQUIPMENT TO BE PROVIDED BY THE COLLEGES SPECIALIST SECURITY CONTRACTOR. PROVIDE AN INTERFACE TO THE SECURITY SYSTEM SUCH THAT THE INTERNAL LIGHTS ARE CONTROLLED VIA A DRY CONTACT FROM THE SECURITY SYSTEM SO THE INTERNAL LIGHTS ARE AUTOMATICALLY TURNED OFF / DISABLED WHEN THE SECURITY SYSTEM IS ARMED.			A
COMMUNICATIONS RACK CR-C		EXISTING COMMUNICATIONS RACK TO BE USED TO ACCOMMODATE THE NEW FIBRE CABLE. UPGRADE THE FIBER AS REQUIRED.			A
COMMUNICATIONS RACK CR-M		PROVIDE CR-M AS A 600 DEEP 12 RU HINGED WALL MOUNTED 19 INCH COMMUNICATIONS C/W LOCKABLE CLEAR DOOR, VENTILATED TOP / SIDES, PATCH PANELS, A 6 X 10 AMP HORIZONTAL REAR MOUNTED POWER RAIL AND CABLE MANAGEMENT TO ACCOMMODATE THE COMMUNICATION OUTLETS. PROVIDE DETAILS OF THE RACK FOR APPROVAL PRIOR TO ORDERING. CONNECT CR-M TO THE EXISTING COMMUNITY CENTRE RACK CR-C VIA AN UNDERGROUND LOOSE TUBE GEL FILLED 12 CORE OS2 OPTICAL FIBRE CABLES FULLY TERMINATED WITH LC CONNECTORS.			A
COMMUNICATIONS OUTLET		RJ45 CAT-6 COMMUNICATIONS OUTLET, CABLED BACK TO A CAT 6 PATCH PANEL IN COMMUNICATIONS RACK CR-M VIA BLUE 4-PAIR CAT-6 UTP CABLE. MOUNT UP TO 3 RJ45 OUTLETS PER MULTI-GANG FACEPLATE WITH SEPARATE PERMANENT LABELLING FOR EACH OUTLET. MOUNT AT 300 AFFL U.N.O	WHITE	CLIPSAL C2000 SERIES	A



# ELECTRICAL DESIGN GROUP

ELECTRICAL BUILDING SERVICES CONSULTANTS

P.O. Box 15, SHERWOOD Q. 4075

Phone: (07) 3278 4375

Website: [www.edg.net.au](http://www.edg.net.au) Email: [brisbane@edg.net.au](mailto:brisbane@edg.net.au)

C3751a - KINGS CHRISTIAN COLLEGE - PIMPAMA, MAINTENANCE SHED

C3751a-0002(A).xls

## ELECTRICAL EQUIPMENT SCHEDULE

REVISION A - 28/ APRIL 2026

THE EQUIPMENT SUPPLIER CONTACT DETAILS MAY BE AVAILABLE ON THE EDG WEBSITE VIA THE FOLLOWING LINK  
[www.edg.net.au/links.html](http://www.edg.net.au/links.html)

TYPE	LAMPS	DESCRIPTION	COLOUR / ACCESSORY	CATALOGUE No	REV
CAT 6A STP COMMUNICATIONS OUTLET		RJ45 CAT-6A STP COMMUNICATIONS OUTLET, CABLED BACK TO A CAT 6 PATCH PANEL IN COMMUNICATIONS RACK CR-M VIA A BLUE 4-PAIR CAT-6A STP CABLE. MOUNT UP TO 3 RJ45 OUTLETS PER MULTI-GANG FACEPLATE WITH SEPARATE PERMANENT LABELLING FOR EACH OUTLET. MOUNT AT 300 AFFL U.N.O	WHITE	CLIPSAL C2000 SERIES	A
PA SYSTEM RECESSED SPEAKER		15W CEILING RECESSED MULTI TAP 100V 8 OHM PUBLIC ADDRESS DUAL CONE SPEAKER CABLED BACK TO THE ASSOCIATED AMPLIFIER WITHIN THE COMMUNICATIONS RACK VIA 1.5MM MARKED FIG 8 CABLE.	WHITE	AUSTRALIAN MONITOR QF8CS	A
PA SYSTEM HORN		30W SURFACE MOUNTED ADJUSTABLE IP66 MULTI TAP 100V 8 OHM PUBLIC ADDRESS HORN SPEAKER CABLED BACK TO THE ASSOCIATED AMPLIFIER WITHIN THE COMMUNICATIONS RACK VIA 1.5MM MARKED FIG 8 CABLE.	WHITE	AUSTRALIAN MONITOR SH30	A
PIT A		EXISTING POWER AND COMMUNICATIONS PITS TO REMAIN AS IS AND BE UTILISED TO ACCOMMODATE THE NEW SUBMAIN / FIBRE CABLE.			A
PIT B		PROVIDE PIT B AS A 450 X 450 X 800 DEEP MIN POWER PIT AND A 450 X 450 X 600 DEEP MIN COMMUNICATIONS PIT EACH WITH A CLASS C INFILL LID C/W PROPRIETARY PRECAST CONCRETE LID SURROUND, PRECAST OR PVC CONCRETE PIT AND RISERS AS REQUIRED. POLLY CRETE / FIBRE PITS ARE NOT ACCEPTABLE. ENSURE THE TOP OF THE PIT IS FLUSH WITH THE FINAL SURROUNDING LEVELS. STAMP / TAG THE COMMUNICATIONS PIT LID WITH THE WORD "COMMUNICATIONS" AND THE POWER PIT LID WITH THE WORD "ELECTRICITY" DRAIN THE PITS TO STORM WATER AND PROVIDE THE PIT WITH A WEEP HOLE IN THE BASE INTO A GRAVEL SOAKAGE PIT. PROVIDE DETAILS OF THE PITS AND LIDS FOR APPROVAL PRIOR TO ORDERING. PROVIDE A 150 WIDE X 150 DEEP MIN SURROUND AROUND THE TOP OF EACH PIT WITH A 10MM FALL AWAY FROM THE PIT LID. PROVIDE PHOTOS OF THE COMPLETED PITS INSTALLATION SHOWING ALL CONDUITS AND CABLING. MARK UP THE PHOTOS WITH THE SIZE AND DESTINATION OF EACH CONDUIT.			A



# ELECTRICAL DESIGN GROUP

ELECTRICAL BUILDING SERVICES CONSULTANTS

P.O. Box 15, SHERWOOD Q. 4075

Phone: (07) 3278 4375

Website: www.edg.net.au Email: brisbane@edg.net.au

C3751a - KINGS CHRISTIAN COLLEGE - PIMPAMA, MAINTENANCE SHED

C3751a-0004(A).xls

DISTRIBUTION BOARD DB-M

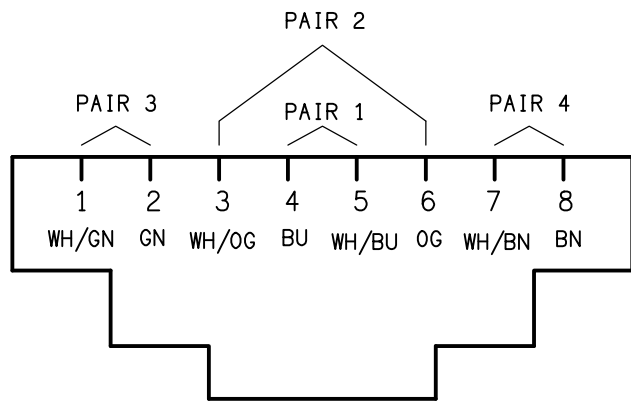
REVISION A - 28 APRIL 2026

FAULT CURRENT: 6KA							REV
MAIN SWITCH: 100A NON AUTO LOAD BREAK ISOLATOR							A
CHASSIS SIZE: 48 POLE							A
SUPPLIED FROM: DB-23							A
CHASSIS RATING: 250A							A
SUPPLY CABLE: 4C+E35							A
PHASES: 3							A
PROVIDE THE DB WITH A FULL WIDTH EMPTY DIN RAIL TO ACCOMMODATE FUTURE CONTACTORS AND CONTROLS. ACCURATELY LABEL EACH CIRCUIT BREAKER WITH THE USE AND THE POSITION.							A
CIRC	PH	CIRCUIT BREAKER (amps)	CONTROL EQUIPMENT	CABLE SIZE ( mm <sup>2</sup> )	LOCATION	CIRCUIT USE	A
P1	1	20	RCBO	2.5	EXTERNAL	AC	A
P2	1	20	RCBO	2.5	GROUND	HD	A
P3	1	20	RCBO	2.5	GROUND	GPO	A
P4	1	20	RCBO	2.5	GROUND	GPO	A
P5	3	32	RCBO	6.0	GROUND	3PH OUTLET	A
P6	3	20	RCBO	2.5	GROUND	RSD	A
P7	1	20	RCBO	2.5	GROUND	GPO	A
P8	1	20	RCBO	2.5	LEVEL 1	SECURITY	A
P9	1	20	RCBO	2.5	LEVEL 1	CR-M	A
P10	1	20	RCBO	2.5	KITCHEN	REF	A
P11	1	20	RCBO	2.5	KITCHEN	GPO	A
P12	1	20	RCBO	2.5	KITCHEN	DW	A
P13	1	20	RCBO	2.5	KITCHEN	ZIP	A
							A
							A
							A
							A
							A
L1	1	20	RCBO	2.5	LEVEL 1	LIGHTS	A
L2	1	20	RCBO	2.5	LEVEL 2	LIGHTS	A
L3	1	20	RCBO PE ON DUSK OFF DAWN	2.5	EXTERNAL	LIGHTS	A
							A
							A
							A
							A
							A
							A

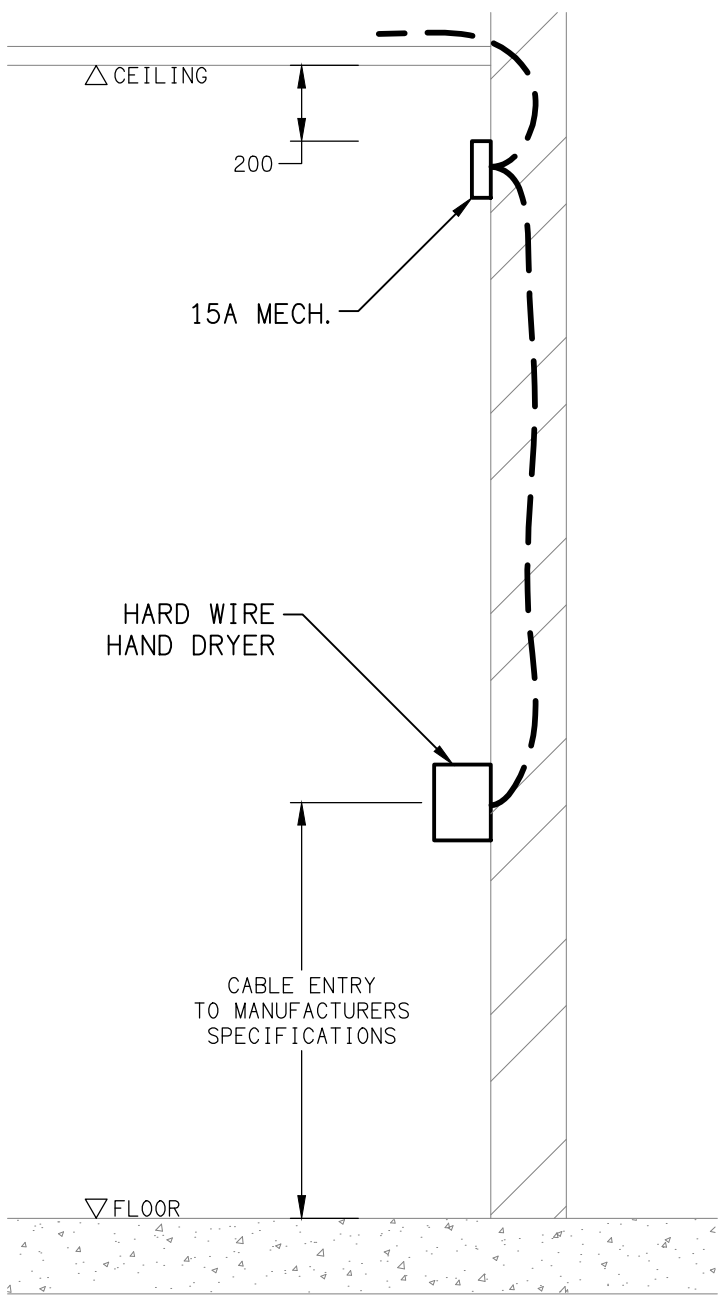
LEGEND

- ELECTRICAL SERVICES SWITCHBOARD.
- SWITCHBOARD / CONTROL PANEL NOT PROVIDED AS PART OF THE ELECTRICAL SUBCONTRACT.
- SINGLE POWER OUTLET.
- DOUBLE POWER OUTLET.
- SPECIAL PURPOSE POWER OUTLET.
- SINGLE PHASE ISOLATOR.
- THREE PHASE ISOLATOR.
- CONDUIT ROUTE.
- HAND DRYER CONNECTION.
- PIT A: EXISTING ELECTRICAL PIT.
- PIT B: NEW POWER AND COMMUNICATIONS PIT TO MATCH EXISTING.
- ONE-WAY LIGHT SWITCH.
- TWO-WAY LIGHT SWITCH.
- CIRCUIT LINE.
- SWITCH LINE.
- DB-x - Py  
POWER CIRCUIT DESIGNATION.  
DENOTES DB AND CIRCUIT.
- ELECTRICAL EQUIPMENT AS NOTED.
- CAT-6 UTP RJ45 COMMUNICATIONS OUTLET.
- CAT-6A STP RJ45 COMMUNICATIONS OUTLET.
- REFER TO DETAIL NOTED FOR THE AREA SHOWN HATCHED.  
ADDITIONAL OUTLETS & FITTINGS MAY BE SHOWN ON DETAIL.
- E1: RECESSED GENERAL LED EMERGENCY LIGHT.
- EX: EMERGENCY LED EXIT LIGHT.
- Lx: LIGHT FITTING C/W NON-MAINTAINED EMERGENCY BATTERY PACK.  
TYPE AS NOTED.
- L1: 1200 LONG SURFACE MOUNTED IP56 BATTEN.
- L2: 300 x 1200 LED T-BAR PANEL LIGHT.
- L3: 1200 LONG SURFACE MOUNTED IP65 BATTEN C/W PRESENCE DETECTOR.
- L4: AREA FLOOD LIGHT.
- PUBLIC ADDRESS RECESSED SPEAKER.
- PUBLIC ADDRESS HORN SPEAKER.

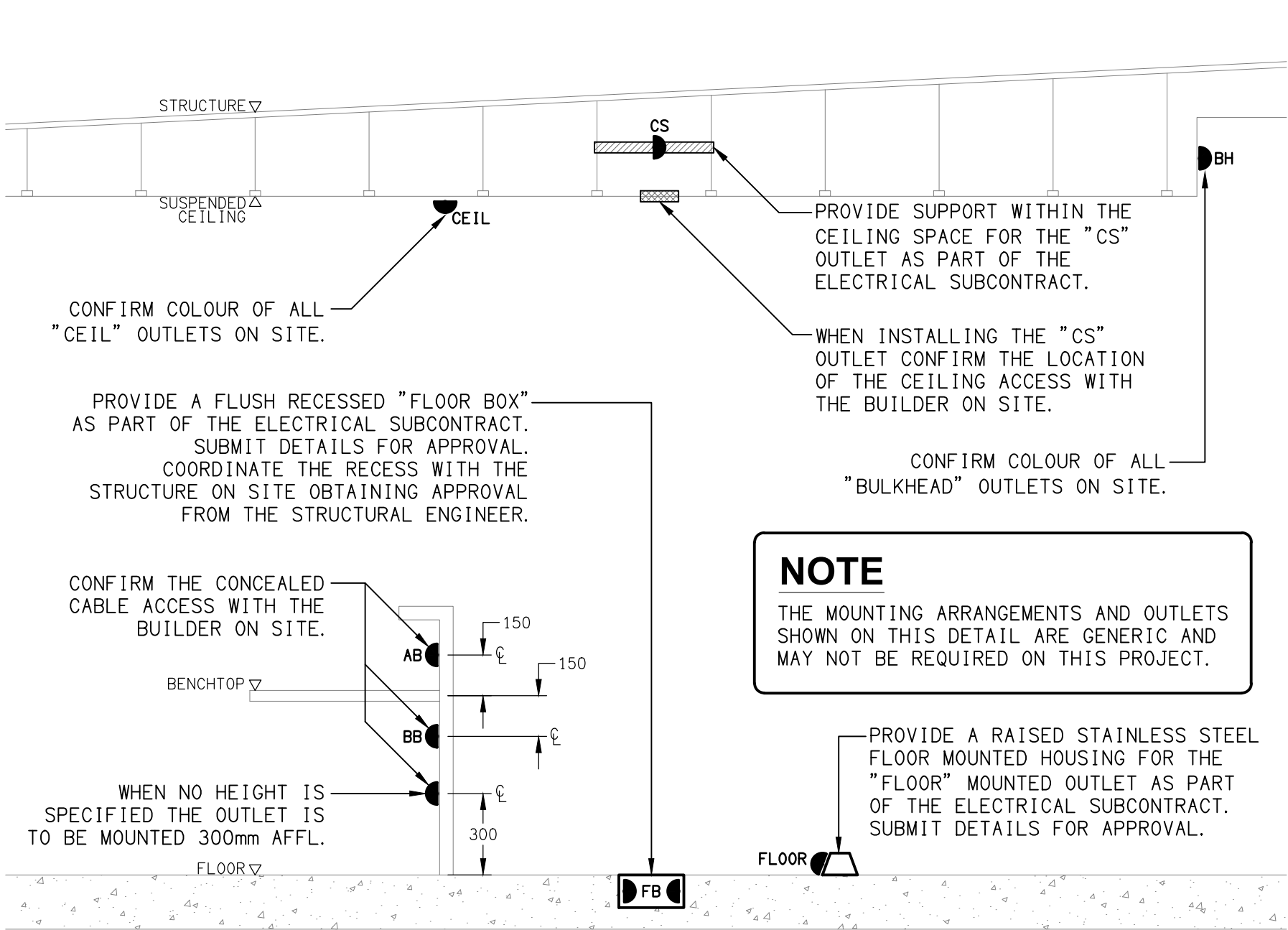
**NOTE**  
ALL ELECTRICAL PENETRATIONS THROUGH THE ROOF SHEETING ARE TO BE IN LINE WITH THE STRUCTURAL OR MECHANICAL SERVICES PENETRATIONS TO AVOID DEDICATED FLASHINGS FOR THE ELECTRICAL SERVICES.



**SCHEMATIC**  
RJ45 PINOUT CONFIGURATION  
NOT TO SCALE



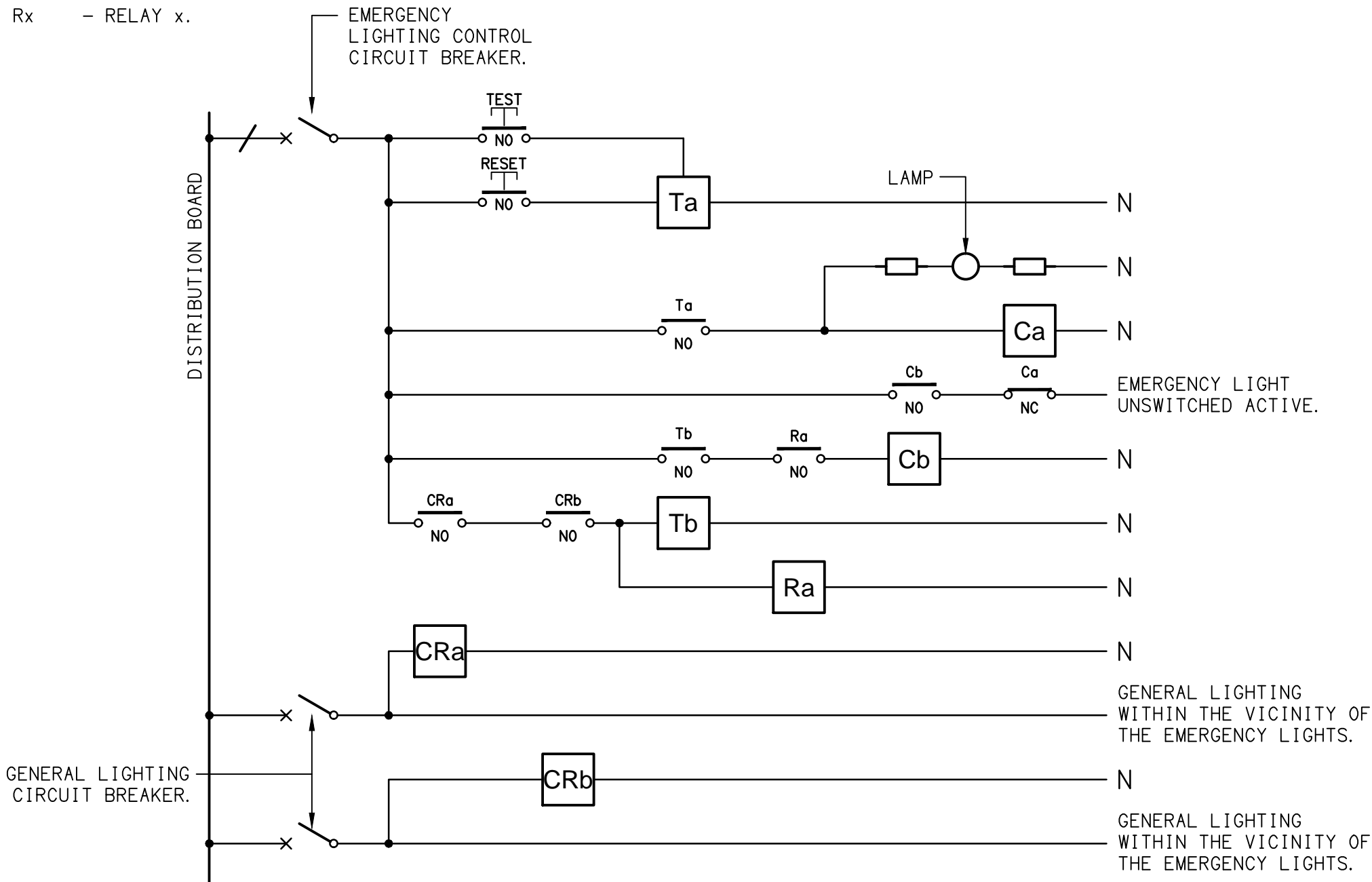
**DETAIL**  
HAND DRYER CONNECTION  
NOT TO SCALE



**DETAIL**  
TYPICAL OUTLET MOUNTINGS  
NOT TO SCALE

EQUIPMENT:

- TEST - TEST PUSH BUTTON MOUNTED ON THE DISTRIBUTION BOARD ESCUTCHEON.
- RESET - RESET PUSH BUTTON MOUNTED ON THE DISTRIBUTION BOARD ESCUTCHEON.
- LAMP - AMBER TEST INDICATING LAMP MOUNTED ON THE DISTRIBUTION BOARD ESCUTCHEON.
- Ta - ADJUSTABLE 0-3 HOUR TIMED RELAY.
- Tb - 15 MINUTE RUN-ON TIMER TO OPERATE UPON THE RETURN OF MAINS POWER.
- Cx - CONTACTOR x.
- CRx - CONTROL RELAY x.
- Rx - RELAY x.



NOTES

1. THE EMERGENCY LIGHT UNSWITCHED ACTIVE / GENERAL LIGHTING SWITCHED ACTIVE CIRCUIT ARRANGEMENT AND CONTROL IS TYPICAL FOR ALL CIRCUITS SUPPLYING EMERGENCY LIGHTS.
2. PROVIDE ADDITIONAL CONTROL RELAYS (CRx) CONFIGURED AS PER CRa AND CRb FOR ALL ADDITIONAL LIGHTING CIRCUITS THAT SUPPLY LIGHTS IN THE VICINITY OF THE EMERGENCY LIGHTS.

**SCHEMATIC**  
EMERGENCY LIGHTING  
NOT TO SCALE



NOTES

1. EXTENT OF WORKS

THE ELECTRICAL SERVICES SUB-CONTRACT INCLUDES BUT IS NOT LIMITED TO THE FOLLOWING:  
- SUPPLY AND INSTALLATION OF ALL COMPONENTS FORMING PART OF THE ELECTRICAL SERVICES.  
- CO-ORDINATION.  
- INSPECTIONS.  
- TESTING AND COMMISSIONING.  
- MAINTENANCE.  
- UPDATE THE EXISTING AS BUILT DRAWINGS.  
- UPDATE THE EXISTING MAINTENANCE MANUAL.  
- CABLING, CABLE SUPPORT SYSTEMS AND ACCESS.  
- POWER DISTRIBUTION.  
- LIGHTING.  
- COMMUNICATIONS CABLING.  
- PUBLIC ADDRESS.  
- PITS AND CONDUITS.  
- ALL MINOR COMPONENTS AND INCIDENTAL WORKS NOT SPECIFICALLY REFERRED TO, HOWEVER NECESSARY TO COMPLETE THE ELECTRICAL SERVICES INSTALLATION SUCH THAT IT IS HANDED OVER COMPLETE, OPERATIONAL AND FIT FOR THE INTENDED USE.

SUPPLY ALL LABOUR, MATERIALS, EQUIPMENT, AND ALL OTHER ITEMS, WHETHER MENTIONED IN DETAIL OR NOT, REQUIRED FOR THE SATISFACTORY COMPLETION OF THE ELECTRICAL SERVICES INSTALLATION, LEAVING IN FULL WORKING ORDER TO THE SATISFACTION OF THE PROJECT MANAGER.

ACCEPT FULL RESPONSIBILITY FOR LIASING, ARRANGING AND CO-ORDINATION OF ALL WORKS THAT HAVE AN EFFECT ON OR WILL BE AFFECTED BY THE ELECTRICAL SERVICES.

CONFIRM THE POSITION OF ALL OUTLETS ON SITE WITH THE SCHOOL PRIOR TO ROUGH-IN.

UPDATE THE SCHOOLS EXISTING AS BUILT DOCUMENTS AND MAINTENANCE MANUAL TO INCLUDE THE NEW WORKS.

2. WORKMANSHIP

ENSURE THAT THE WORK IS PERFORMED BY THE HOLDER OF A CURRENT ELECTRICAL SUB CONTRACTOR LICENSE. ENSURE THE INSTALLATION AND ALL COMPONENTS, FIXTURES, FITTINGS, OUTLETS AND CABLES ARE SUPPLIED AND INSTALLED TO A HIGH STANDARD THROUGHOUT, AND INSTALLED IN A NEAT AND TRADESMAN LIKE MANNER, TO THE CURRENT INDUSTRY STANDARDS. ENSURE ALL MATERIALS AND COMPONENTS OF A SIMILAR TYPE ARE OF THE SAME MANUFACTURER AND INSTALLED IN A UNIFORM MANNER.

IT IS THE ELECTRICAL SUB CONTRACTOR'S RESPONSIBILITY TO ENSURE THAT THE INSTALLATION IS FIT FOR PURPOSE AND IS PROVIDED AS A COMPLETE WORKING INSTALLATION. IT IS THE ELECTRICAL SUB CONTRACTOR'S RESPONSIBILITY TO PROVIDE ALL COMPONENTS, FITTINGS, FIXTURES, SYSTEMS, PROGRAMMING ETC IRRESPECTIVE OF THE LEVEL DETAILED IN THE DOCUMENTS SUCH THAT THE INSTALLATION IS PROVIDED AS A COMPLETE WORKING INSTALLATION.

CONCEAL ALL WIRING AND CONDUITS. EXPOSED CABLING OR CONDUITS ARE GENERALLY NOT ACCEPTABLE. IT IS NOTED THAT CONDUITS WILL NEED TO BE INCLUDED WITHIN THE PRECAST PANELS. ENSURE ALL COMPONENTS, EQUIPMENT AND MATERIALS SUPPLIED ARE NEW, UNUSED, DESIGNED AND SELECTED TO ENSURE SATISFACTORY OPERATION UNDER VARYING ATMOSPHERIC, CLIMATIC, HUMID TROPICAL CONDITIONS WITHOUT DISTORTION AND DETERIORATION IN ANY PART AFFECTING EFFICIENCY AND RELIABILITY OF THE SYSTEMS. DESIGN AND SELECT ALL EQUIPMENT TO PROVIDE THE NECESSARY SAFETY TO HUMAN LIFE AND PROPERTY DURING OPERATION AND MAINTENANCE WITH PARTICULAR ATTENTION GIVEN TO ELECTRICAL SAFETY AND SEGREGATION PRECAUTIONS.

CHECK THE FINISHED PAINTWORK AROUND THE AREA OF EACH INSTALLATION AND TOUCH UP ALL DAMAGED PARTS AND FINISHES AFTER THE INSTALLATION OF THE ELECTRICAL SERVICES.

ALL WORKS ARE TO BE CARRIED OUT IN ACCORDANCE WITH THE BUILDER'S PROGRAM. ENSURE ALL FINAL LOCATIONS OF OUTLETS AND FITTINGS ARE CO-ORDINATED ONSITE WITH THE ARCHITECT AND ALL OTHER SERVICES, TO THE APPROVAL OF THE PROJECT MANAGER. ALLOW TO CO-ORDINATE THE FINAL LOCATION OF ALL EQUIPMENT, FITTINGS, & OUTLETS, SUCH THAT THEY ARE INSTALLED IN ACCORDANCE WITH THE AS3000 RESTRICTED ZONES, AND ARE NOT COVERED INAPPROPRIATELY.

ENSURE THAT ALL METAL SURFACES ARE SUITABLY PROTECTED AGAINST CORROSION, AND THAT ALL PLASTIC MATERIALS ARE UV STABILISED.

PROVIDE ALL MATERIALS AS NEW, AND OF THE HIGHEST CLASS AVAILABLE FOR THEIR RESPECTIVE TYPES. ENSURE ALL ASPECTS OF THE WORK ARE OF A HIGH STANDARD THROUGHOUT, AND INSTALLED IN A NEAT AND TRADESMAN LIKE MANNER, TO THE CURRENT INDUSTRY STANDARDS.

ALL WORK IS TO BE UNDERTAKEN IN SUCH A MANNER THAT THE OPERATION OF THE REMAINING SCHOOL AREAS ARE NOT UNDULY EFFECTED BY THE WORKS.

3. STANDARDS

IRRESPECTIVE OF INFORMATION CONTAINED IN THE ELECTRICAL SERVICES DOCUMENTS OR IN INSTRUCTIONS, IT IS THE ELECTRICAL SUB CONTRACTOR'S RESPONSIBILITY TO ENSURE ALL ELECTRICAL SERVICES WORKS ARE INSTALLED IN ACCORDANCE WITH THE REQUIREMENTS OF THE FOLLOWING. REFER ANY DISCREPANCIES BETWEEN THE REQUIREMENTS OF THE FOLLOWING AND/OR THE ELECTRICAL SERVICES DOCUMENTS AND INSTRUCTIONS TO THE PROJECT MANAGER FOR CLARIFICATION PRIOR TO THE PLACING OF ORDERS, FABRICATION OR INSTALLATION OF THE ITEMS/METHODS IN DISCREPANCY.  
- NCC BUILDING CODE OF AUSTRALIA.  
- ELECTRICITY ACT.  
- ELECTRICAL SAFETY ACT.  
- AS/NZS3000.  
- AS3008.  
- WORKPLACE HEALTH AND SAFETY ACT.  
- TELECOMMUNICATIONS ACT.  
- ACMA REQUIREMENTS.

4. AUTHORITIES

ENSURE ALL OF THE ELECTRICAL SERVICES COMPLY WITH THE REQUIREMENTS OF ALL REGULATORY AUTHORITIES HAVING JURISDICTION OVER THE SITE INCLUDING BUT NOT LIMITED TO THE FOLLOWING:  
- ACMA.  
- LOCAL COUNCIL.  
- LOCAL SUPPLY AUTHORITY.  
- STATE GOVERNMENT WORKPLACE, HEALTH AND SAFETY AUTHORITY.  
- LOCAL FIRE AND RESCUE AUTHORITY.

5. CABLES

UNLESS OTHERWISE SPECIFIED, INSTALL AND TERMINATE CABLES IN ACCORDANCE WITH THE MANUFACTURERS' RECOMMENDATIONS. DETERMINE THE FINAL ROUTES TO SUIT THE BUILDING STRUCTURE AND SITE CONDITIONS. UNLESS NOTED OTHERWISE, PROVIDE ALL 240 VOLT POWER AND LIGHTING WIRING AS 2.5mm² TWIN & EARTH STRANDED COPPER CONDUCTORS, PVC INSULATED 0.6/1kv V75 GRADE TO AS3174, PROTECTED BY A 20 AMP CIRCUIT BREAKER. ALL CONDUIT AND FITTINGS TO BE RIGID UPVC TO AS2053, UNLESS NOTED OTHERWISE.

NOTES

6. POWER DISTRIBUTION

THE POWER DISTRIBUTION COMPONENT OF THIS CONTRACT INCLUDES THE PROVISION OF A NEW MCB IN THE EXISTING DB-23 AND UNDERGROUND SUBMAIN TO A NEW DISTRIBUTION BOARD DB-M. THE POWER DISTRIBUTION COMPONENT OF THIS CONTRACT INCLUDES, BUT IS NOT LIMITED TO THE FOLLOWING EXTENT OF WORK:  
- POWER DISTRIBUTION.  
- EARTHING.  
- CIRCUIT BREAKER IN DB-23.  
- NEW SUBMAINS FROM DB-23 TO DB-M.  
- DISTRIBUTION BOARD DB-M.  
- CIRCUITS.  
- ISOLATORS AND OUTLETS.  
- TESTING AND COMMISSIONING.  
- SWITCHBOARD SHOP DRAWING.  
- CABLING, CABLE SUPPORT SYSTEMS AND ACCESS INCLUDING EXTENDING THE EXISTING PIT AND CONDUIT SYSTEM.

THE POWER SUPPLY TO THE REMAINDER OF THE SCHOOL MUST BE MAINTAINED AT ALL TIMES THE SCHOOL IS OPEN INCLUDING THE AFTER HOURS CARE. ANY INTERRUPTION TO THE POWER SUPPLY MUST BE ADVISED TO THE SCHOOL IN WRITING TWO WEEKS PRIOR.

REFER TO THE DISTRIBUTION BOARD SCHEDULE AND SCHEMATICS FOR ADDITIONAL REQUIREMENTS AND CIRCUIT DETAILS.

PROVIDE THE NEW DISTRIBUTION BOARD AS FOLLOW:

- IP44.
- LIGHT GREY ENCLOSURE WHITE ESCUTCHEON.
- 3 POINT LOCKABLE HANDLES ON ALL DOORS.
- LIFT OFF HINGES ON ALL DOORS AND ESCUTCHEONS.
- 1/4 TURN LATCHES AND D HANDLES ON ALL ESCUTCHEONS.
- ALL SWITCHGEAR TO MATCH THE EXISTING BRAND.
- PROVIDE SHOP DRAWINGS FOR APPROVAL.

PROVIDE WINDOWS IN ALL PANELS AND ESCUTCHEONS AS NECESSARY TO ALLOW ALL CABLE AND BUSBAR CONNECTIONS TO BE SCANNED BY A THERMAL IMAGING SCANNER / CAMERA WITHOUT HAVING TO ISOLATE THE POWER. IF THE PANEL OR ESCUTCHEON CAN BE OPENED AND THE CABLE / BUSBAR CONNECTION CAN BE SIGHTED WITHOUT ISOLATING THE POWER, WINDOWS ARE NOT REQUIRED IN THAT PANEL / ESCUTCHEON.

7. LIGHTING

THE LIGHTING COMPONENT OF THIS CONTRACT INCLUDES INTERNAL LIGHTING TO ALL AREAS OF THE BUILDING, EXTERNAL LIGHTING, GENERAL LIGHTING CONTROL, EMERGENCY AND EVACUATION LIGHTING AND THE LIGHTING SUB CIRCUIT WIRING. ALL OF THE LIGHT FITTINGS AND ACCESSORIES ARE TO BE PROVIDED AS PART OF THIS CONTRACT. ALL LIGHT SOURCES ARE TO BE SOLID STATE LED WITH A 5-YEAR MANUFACTURERS WARRANTY. ALL OF THE LIGHT FITTINGS, LAMPS AND ACCESSORIES ARE TO BE PROVIDED AS PART OF THIS CONTRACT. THE LIGHTING COMPONENT OF THIS CONTRACT INCLUDES, BUT IS NOT LIMITED TO THE FOLLOWING EXTENT OF WORK:  
- LIGHTING.  
- LIGHT FITTINGS AND ACCESSORIES.  
- EARTHING OF THE LIGHTING INSTALLATION.  
- LIGHTING CONTROL.  
- LIGHTING SUBCIRCUITS.  
- TESTING AND COMMISSIONING.  
- SINGLE POINT EMERGENCY LIGHTING SYSTEM.

PROVIDE A SINGLE POINT EMERGENCY LIGHTING SYSTEM THAT COMPLIES WITH THE LATEST ISSUE OF ALL PARTS AS2293 AND THE RELEVANT PARTS OF THE NCC BCA. INSTALL EMERGENCY LIGHT FITTINGS NOMINATED AS MAINTAINED WITH THE LAMP PERMANENTLY ON SUPPLIED VIA AN UNSWITCHED ACTIVE MAINS SUPPLY WHEN THE MAINS SUPPLY IS AVAILABLE. WHEN THE MAINS SUPPLY IS NOT AVAILABLE, THE LAMP IS TO REMAIN ON SUPPLIED BY THE EMERGENCY PACK. SINGLE LAMP MAINTAINED EMERGENCY LIGHTS ARE NOT SWITCHED WITH THE LOCAL GENERAL AREA LIGHTING. (THE LAMP IS ALWAYS ON.)

INSTALL EMERGENCY LIGHT FITTINGS NOMINATED AS NON-MAINTAINED AS FOLLOWS:  
- IF THE FITTING IS NOT BEING SWITCHED, THE LAMP IS TO REMAIN OFF WHEN THE MAINS SUPPLY IS AVAILABLE. WHEN THE MAINS SUPPLY IS NOT AVAILABLE THE LAMP IS TO BE SWITCHED ON SUPPLIED BY THE EMERGENCY PACK. UNSWITCHED SINGLE LAMP NON-MAINTAINED EMERGENCY LIGHTS ARE NOT SWITCHED WITH THE LOCAL GENERAL AREA LIGHTING. (THE LAMP IS ON ONLY WHEN THE MAINS SUPPLY IS NOT AVAILABLE.)  
- IF THE FITTING IS BEING SWITCHED, THE LAMP IS TO BE SUPPLIED AND CONTROLLED WITH THE LOCAL GENERAL AREA LIGHTING WHEN THE MAINS SUPPLY IS AVAILABLE. WHEN THE MAINS SUPPLY IS NOT AVAILABLE THE LAMP IS TO BE SWITCHED ON, SUPPLIED BY THE EMERGENCY PACK. (THE LAMP IS ON WHEN TURNED ON WITH THE LOCAL GENERAL LIGHTING OR THE MAIN SUPPLY IS NOT AVAILABLE.)

INSTALL EMERGENCY LIGHTS SUCH THAT THE STATUS INDICATOR L.E.D. IS CLEARLY VISIBLE AND THE TEST BUTTONS ARE READILY ACCESSIBLE. LABEL EACH CIRCUIT BREAKER WHICH CONTROLS THE UNSWITCHED ACTIVE TO EXIT LIGHTS WITH A LABEL FIXED ADJACENT; ENGRAVED PLASTIC LAMINATE, GREEN BACKGROUND WITH WHITE CHARACTERS:-

WARNING  
INTERRUPTING SUPPLY WILL DISCHARGE  
EMERGENCY LIGHTING BATTERIES

PROVIDE WRITTEN EVIDENCE OF THE INITIAL COMMISSIONING AND TESTING AND TESTING FOR THE DURATION OF THE MAINTENANCE PERIOD IN ACCORDANCE WITH AS 2293.2.

PROVIDE MAINTENANCE OF THE EMERGENCY AND EXIT LIGHTING INSTALLATION INCLUDING RECORDS IN ACCORDANCE WITH THE LATEST ISSUE OF ALL PARTS AS2293 AND THE RELEVANT PARTS OF THE NCC BCA.

8. COMMUNICATIONS CABLING

THE COMMUNICATIONS CABLING COMPONENT OF THIS CONTRACT INCLUDES A NEW COMMUNICATION RACK CR-21, OPTICAL FIBRE CABLING AS WELL AS CAT 6A STP OUTLETS.

PROVIDE DEDICATED CAT 6A STP PATCH PANELS IN CR-M TO ACCOMMODATE THE CAT 6A OUTLETS, DEDICATED CAT 6 UTP PATCH PANELS IN CR-M TO ACCOMMODATE THE CAT 6 OUTLETS.

PROVIDE 12 CORE OS2 GEL FILLED UNDERGROUND LC TERMINATED OPTICAL FIBRE CABLE FROM THE NEW COMMUNICATIONS RACK CR-M TO THE EXISTING COMMUNICATIONS RACK CR-C.

THE COMMUNICATIONS CABLING IS TO BE OF THE SAME EXISTING STRUCTURED CABLING SOLUTION USED IN BUILDING P1M23 AND BE PROVIDED WITH A MANUFACTURERS 15 YEAR WARRANTY.

THE COMMUNICATIONS CABLING COMPONENT OF THIS CONTRACT INCLUDES, BUT IS NOT LIMITED TO THE FOLLOWING EXTENT OF WORK:

- COMMUNICATIONS RACK CR-M.
- CAT 6A STP COMMUNICATIONS OUTLETS, CABLING AND PATCH PANELS.
- CAT 6 UTP COMMUNICATIONS OUTLETS, CABLING AND PATCH PANELS.
- FIBER OPTIC.
- OPTICAL FIBRE CABLE.
- LABELLING.
- CABLING, CABLE SUPPORT SYSTEMS AND ACCESS INCLUDING EXTENDING THE EXISTING PIT AND CONDUIT SYSTEM.
- TESTING AND COMMISSIONING.

THE PA EQUIPMENT IS TO BE MOUNTED IN THE TOP OF THE COMMUNICATIONS RACK CR-M.

ALL COMMUNICATIONS CABLING IS TO BE UNDERTAKEN BY AN ACMA LICENCE HOLDER. THE PATCH LEADS, FLY LEADS, UPS, VAPE SENSORS, CCTV CAMERAS AND ACTIVE COMMUNICATIONS EQUIPMENT WILL BE PROVIDED BY THE COLLEGE.

NOTES

9. PUBLIC ADDRESS SYSTEM

THE PUBLIC ADDRESS SYSTEM COMPONENT OF THIS CONTRACT INCLUDES MULTI TAP 100V SPEAKERS AND HORNS CABLED TO A SINGLE CHANNEL 120W POWER AMPLIFIER C/W MANUAL VOLUME CONTROL WITH THE AMPLIFIER RACK MOUNTED WITH IN THE TOP OF COMMUNICATIONS RACK CR-M. PRIOR TO PRACTICAL COMPLETION, PROVIDE A TEMPORARY MUSIC SOURCE TO AIM / BALANCE THE SPEAKERS AND HORNS ON SITE AS DIRECTED BY THE COLLEGE.

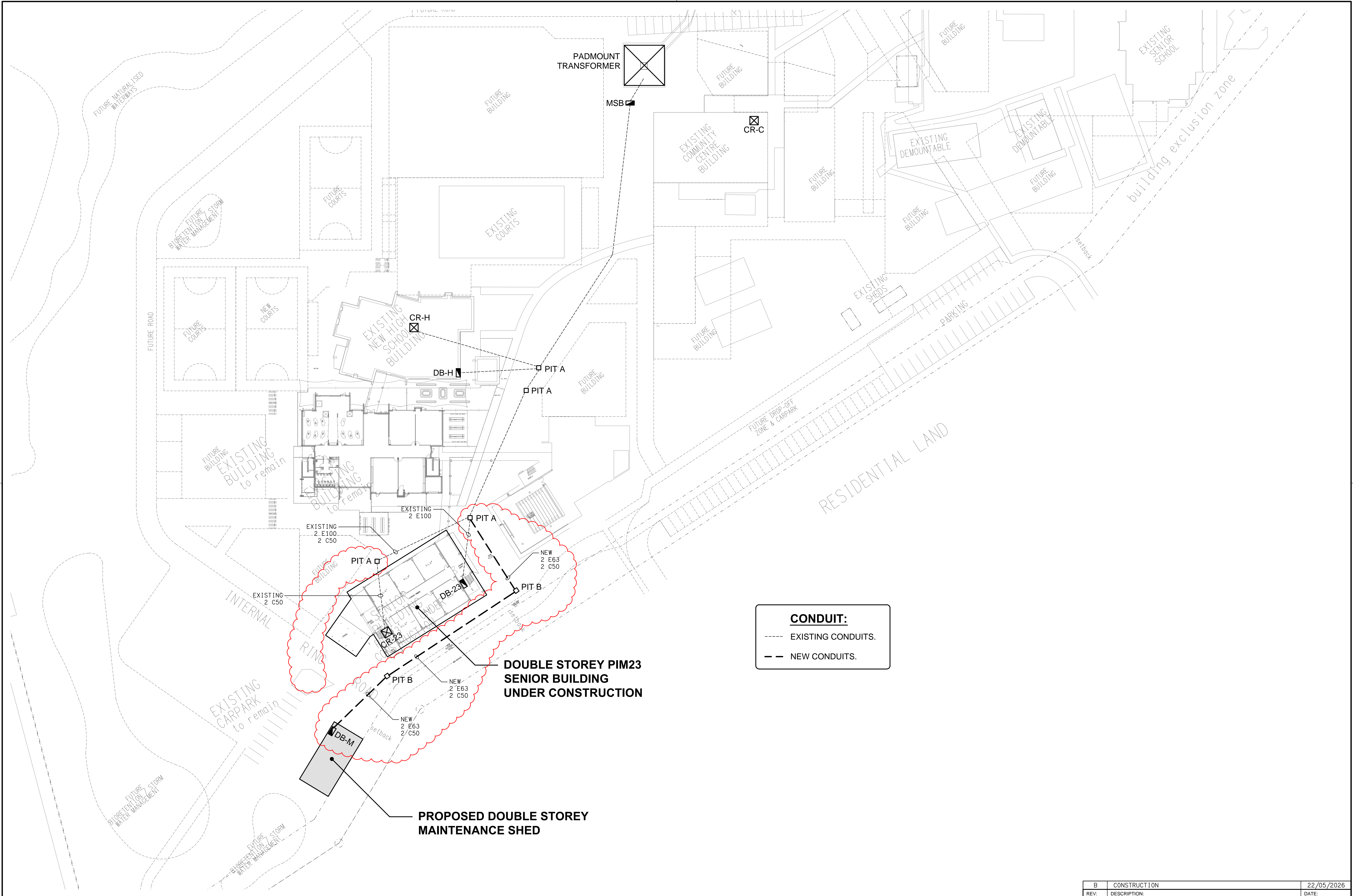
THE PUBLIC ADDRESS SYSTEM COMPONENT OF THIS CONTRACT INCLUDES BUT IS NOT LIMITED TO THE FOLLOWING:  
- SPEAKERS AND HORNS.  
- RACK MOUNTED AMPLIFIER.  
- CO-ORDINATION.  
- TESTING, COMMISSIONING AND BALANCING.  
- MAINTENANCE.  
- AS CONSTRUCTED DOCUMENTS INCLUDING DRAWINGS DETAILING THE LOOP PATH OF EACH SPEAKER CABLE.  
- CABLING, CABLE SUPPORT SYSTEMS AND ACCESS.  
- ALL MINOR COMPONENTS AND INCIDENTAL WORKS NOT SPECIFICALLY REFERRED TO, HOWEVER NECESSARY TO COMPLETE THE PUBLIC ADDRESS SYSTEM INSTALLATION SUCH THAT IT IS HANDED OVER COMPLETE, OPERATIONAL AND FIT FOR THE INTENDED USE.

ALL PUBLIC ADDRESS SYSTEM WORKS MUST BE UNDERTAKEN BY AN ACMA LICENCE HOLDER. THE AUDIO / IP CONVERTERS, THE CONNECTION OF THE AMPLIFIERS TO THE AUDIO / IP CONVERTERS AND PATCH LEADS WILL BE PROVIDED BY THE COLLEGE.

10. ABBREVIATIONS

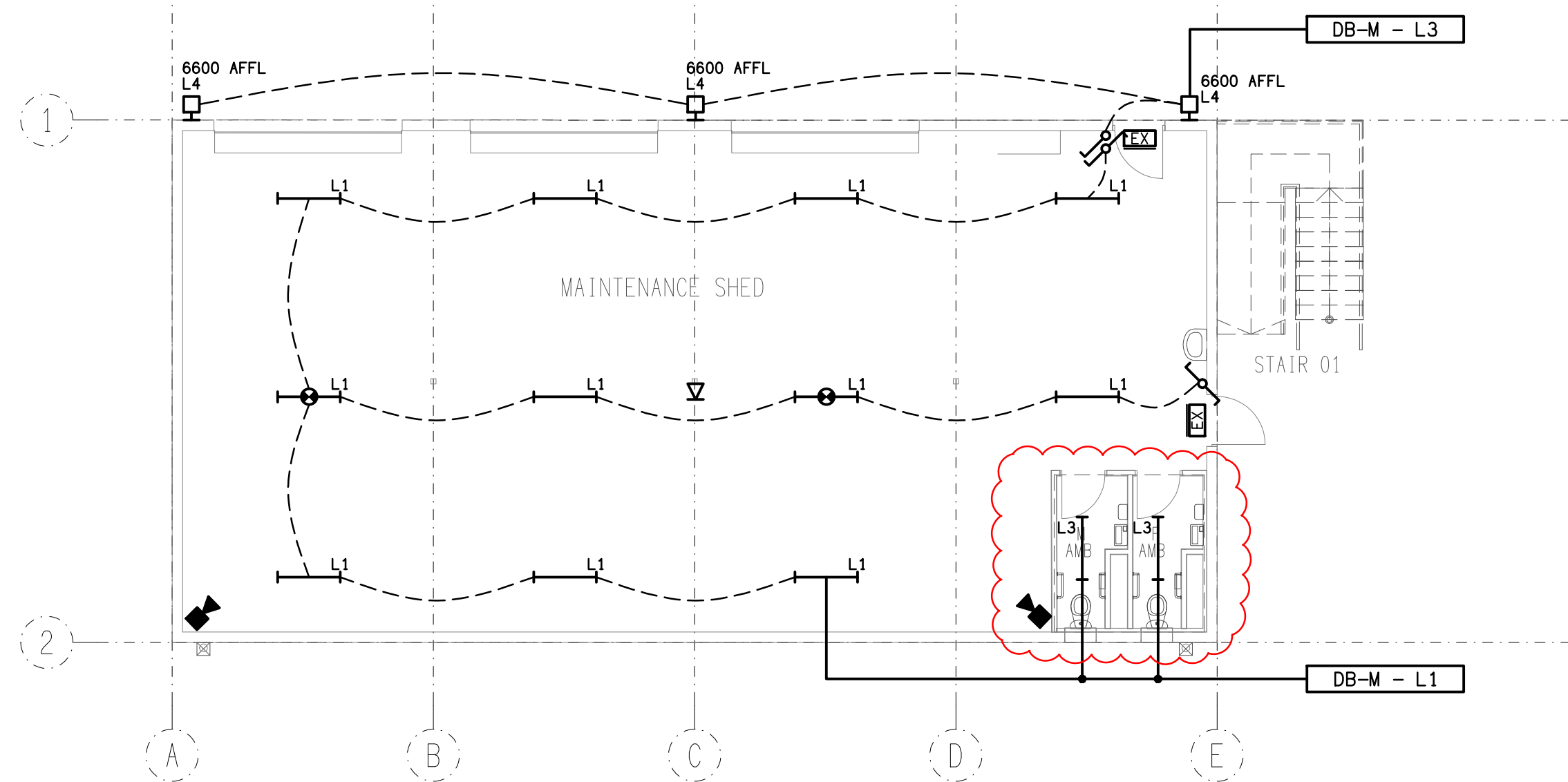
- A - AMP CURRENT RATING
- AB - MOUNT ABOVE BENCH.
- AFFL - ABOVE FINISHED FLOOR LEVEL.
- BB - MOUNT BELOW BENCH.
- BH - MOUNT ON BULKHEAD.
- CEIL - MOUNT ON CEILING.
- CS - MOUNT WITHIN CEILING SPACE.
- C/W - COMPLETE WITH.
- MCB - MINIATURE CIRCUIT BREAKER.
- MSB - MAIN SWITCHBOARD.
- N - NEON / LED INDICATOR WHEN ON.
- NTS - NOT TO SCALE.
- RCBO - CIRCUIT PROTECTED VIA A 30ma RESIDUAL CURRENT DEVICE INTEGRAL TO THE CIRCUIT BREAKER.
- UNO - UNLESS NOTED OTHERWISE.
- STP - SHIELDED TWISTED PAIR.
- UTP - UNSHIELDED TWISTED PAIR.
- WP - WEATHERPROOF TO IP56 UNO.
- 500 - NUMBER DENOTES MOUNTING HEIGHT AFFL.

ELECTRICAL DESIGN GROUP BRISBANE PTY LTD ACN 092 710 793		THE COPYRIGHT OF THIS DRAWING REMAINS THE PROPERTY OF THE ELECTRICAL DESIGN GROUP.		PROJECT: KINGS CHRISTIAN COLLEGE PIMPAMA, MAINTENANCE SHED		B CONSTRUCTION 22/05/2026	
TRADING AS: ELECTRICAL DESIGN GROUP		USE FIGURED DIMENSIONS IN PREFERENCE TO SCALE.		DRAWING: ELECTRICAL SERVICES NOTES		REV: DESCRIPTION: DATE:	
ALL DIMENSIONS TO BE VERIFIED ONSITE.		ELECTRICAL BUILDING SERVICES CONSULTANTS BRISBANE GOLD COAST		198 PIMPAMA JACOBS WELL ROAD, PIMPAMA, QUEENSLAND		SCALE: NOT TO SCALE AT A1	
P.O.Box 15, Sherwood Q.4075 Phone: (07) 3278 4375 Email: brisbane@edg.net.au Web: www.edg.net.au		PROJECT NO: DRAWING NO: REVISION:		C3751a E02 B			

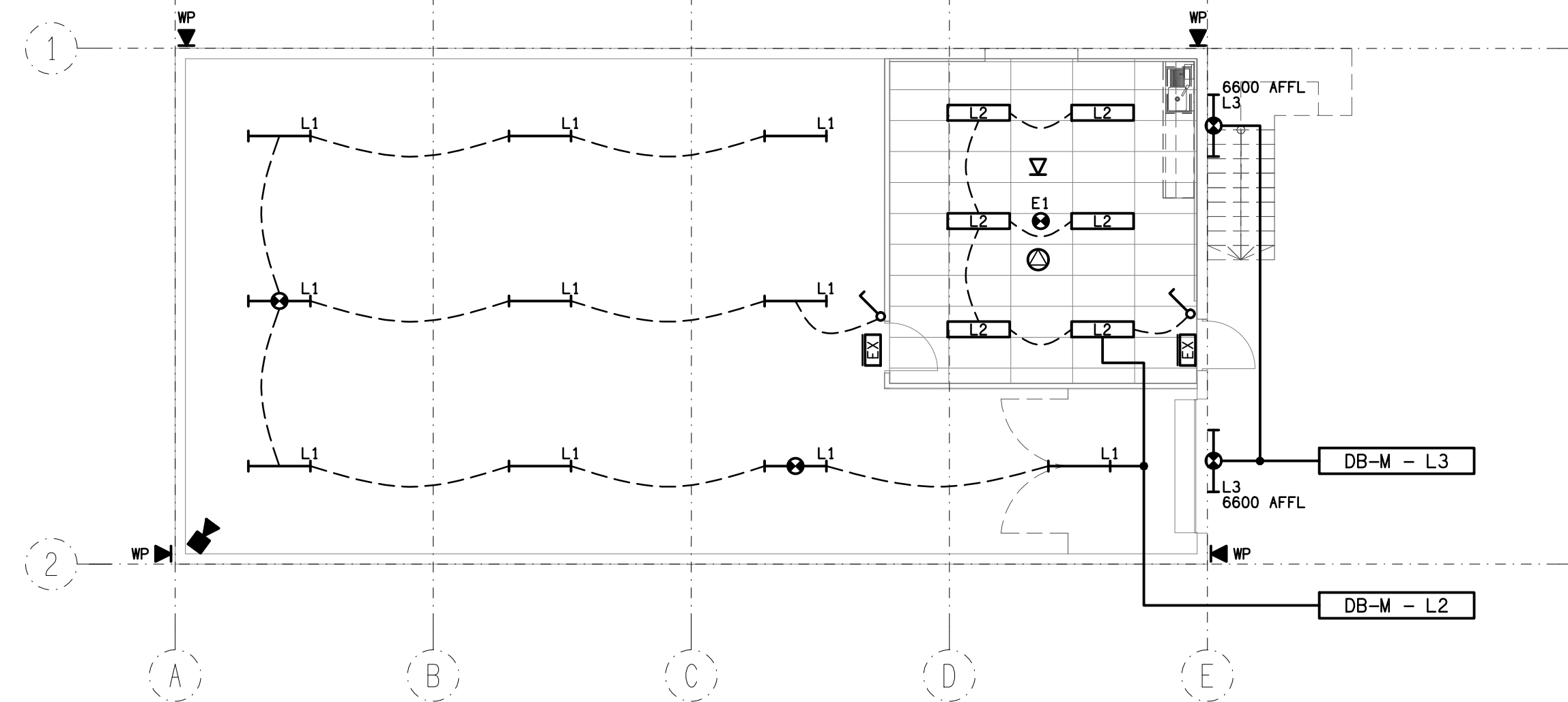


**CONDUIT:**  
--- EXISTING CONDUITS.  
-- NEW CONDUITS.

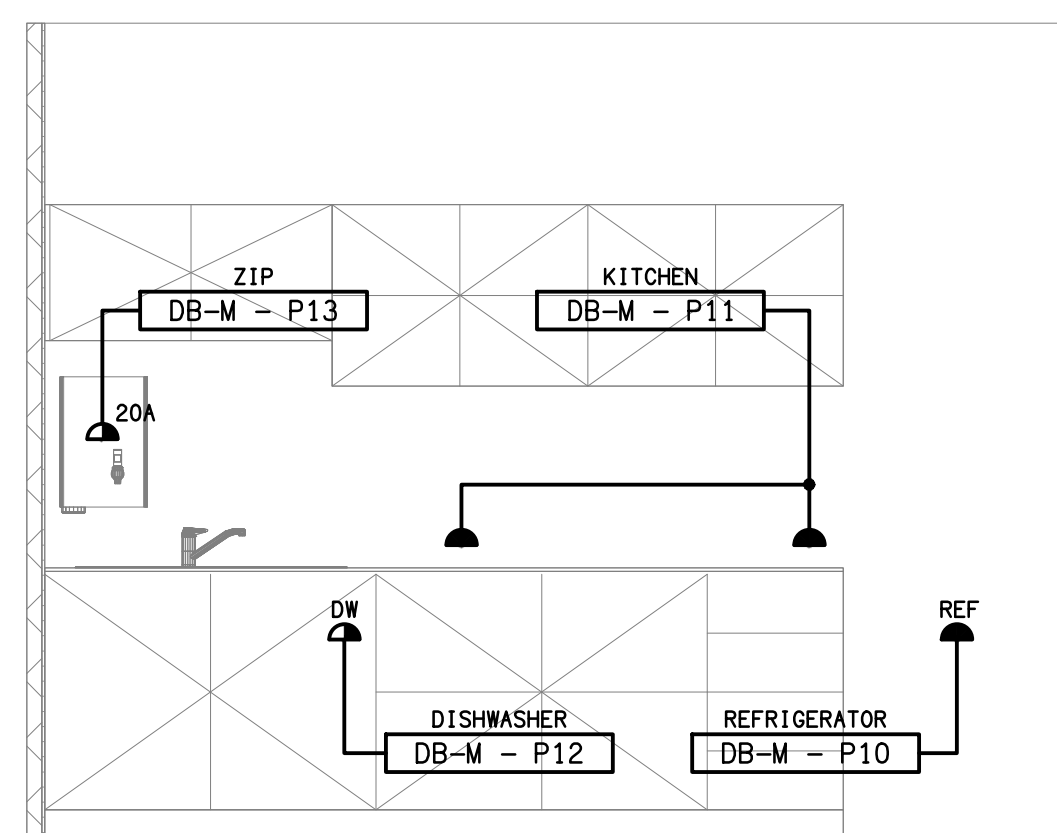




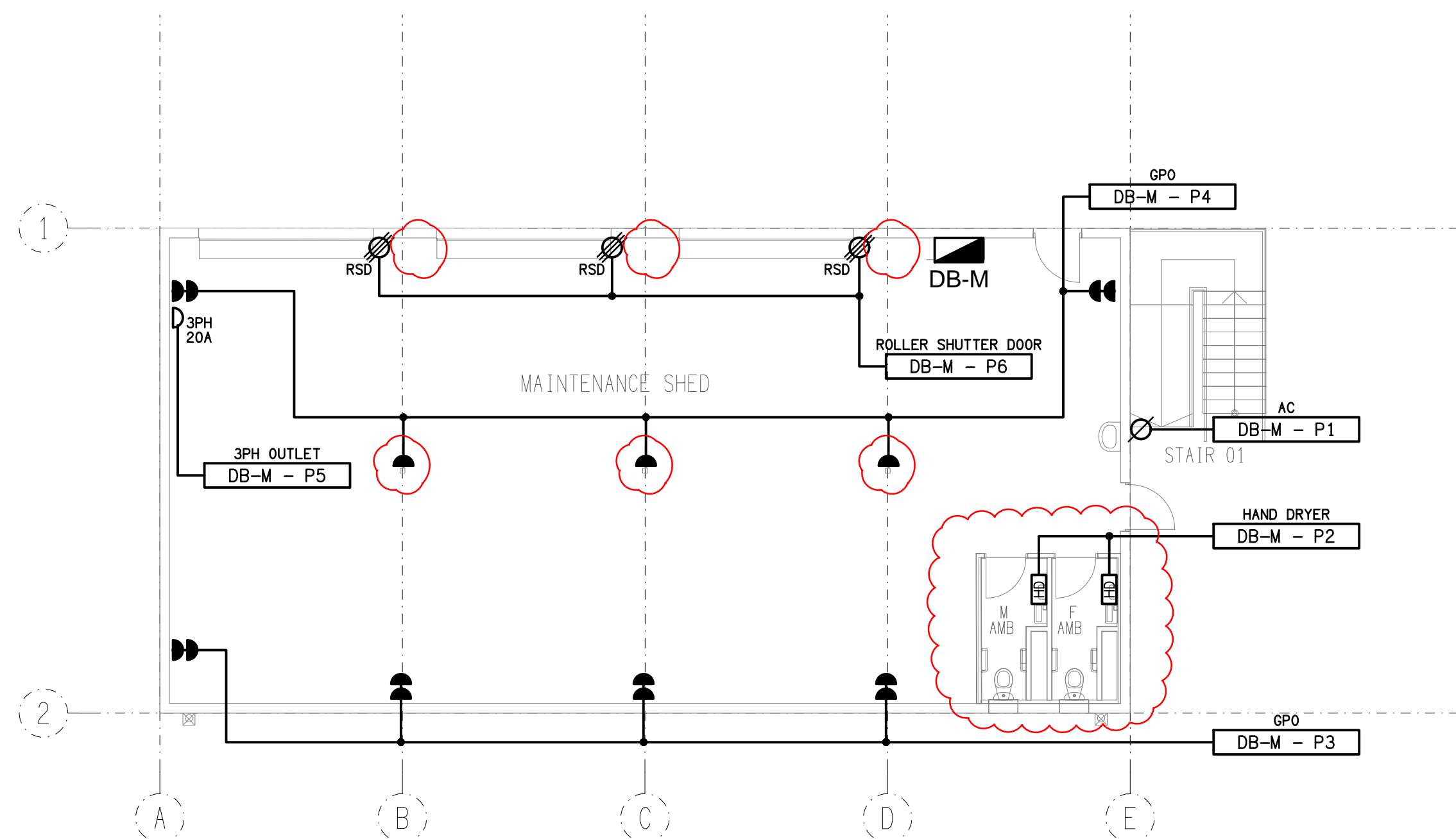
**GROUND LEVEL**  
REFLECTED CEILING PLAN  
SCALE 1: 100



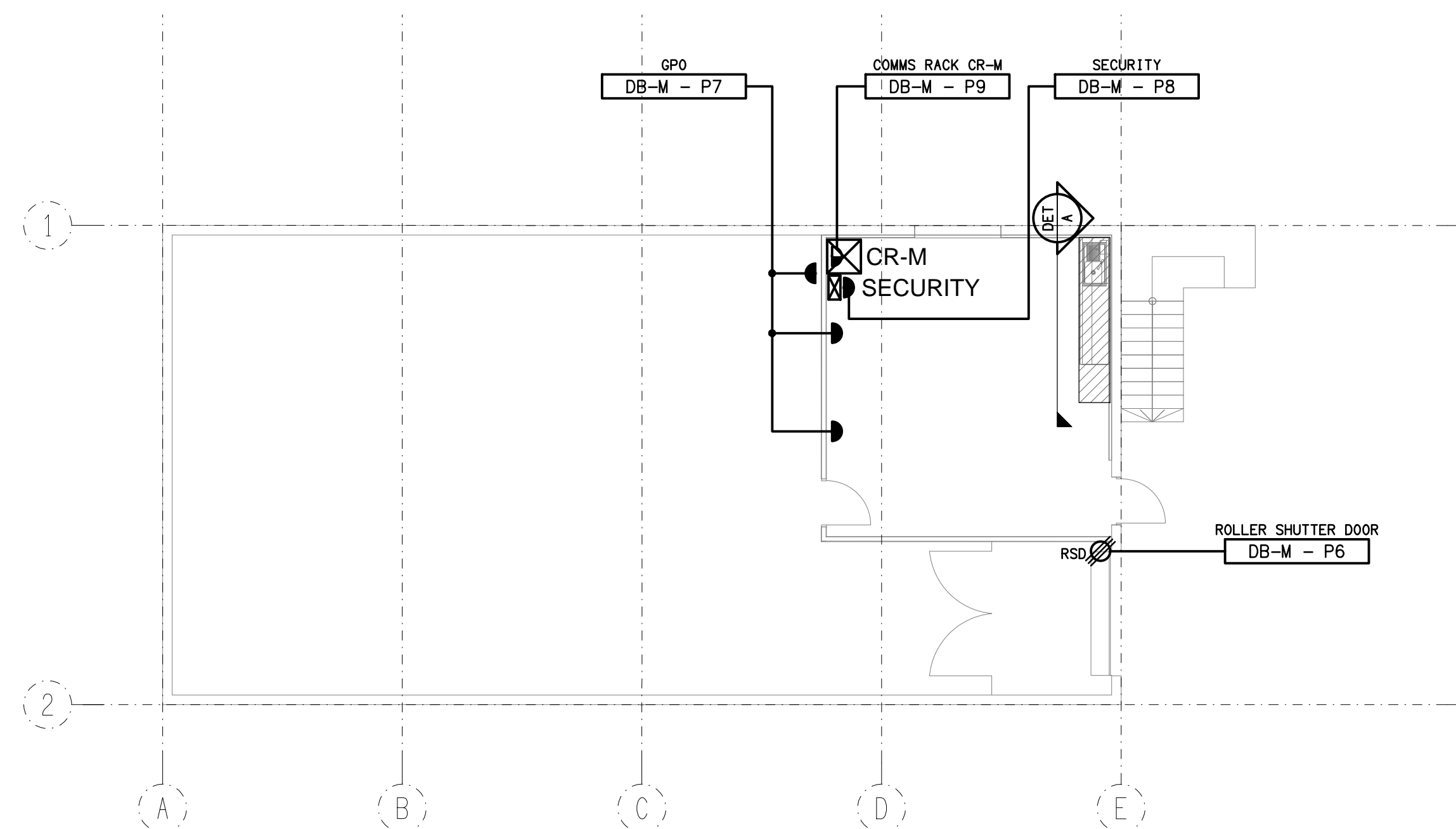
**LEVEL 1**  
REFLECTED CEILING PLAN  
SCALE 1: 100



**DETAIL A**  
LEVEL 1 KITCHENETTE ELEVATION  
SCALE 1: 25



**GROUND ELVEL**  
FLOOR PLAN  
SCALE 1: 100



**LEVEL 1**  
FLOOR PLAN  
SCALE 1: 100

ELECTRICAL DESIGN GROUP BRISBANE  
PTY LTD  
ACN 092 710 793  
TRADING AS:  
ELECTRICAL DESIGN GROUP

THE COPYRIGHT OF THIS DRAWING  
REMAINS THE PROPERTY OF THE  
ELECTRICAL DESIGN GROUP.  
USE FIGURED DIMENSIONS  
IN PREFERENCE TO SCALE.  
ALL DIMENSIONS TO BE  
VERIFIED ONSITE.

**ELECTRICAL DESIGN GROUP**  
ELECTRICAL BUILDING SERVICES CONSULTANTS  
BRISBANE GOLD COAST

P.O.Box 15, Sherwood Q.4075  
Phone: (07) 3278 4375  
Email: brisbane@edg.net.au  
Web: www.edg.net.au

PROJECT:  
**KINGS CHRISTIAN COLLEGE  
PIMPAMA, MAINTENANCE SHED**

198 PIMPAMA JACOBS WELL ROAD, PIMPAMA, QUEENSLAND

B	CONSTRUCTION	22/05/2026
REV:	DESCRIPTION:	DATE:

DRAWING:  
**ELECTRICAL SERVICES  
FLOOR & REFLECTED CEILING PLANS**

SCALE:  
1:100

AT A1

PROJECT NO:  
**C3751a**

DRAWING NO:  
**E04**

REVISION:  
**B**